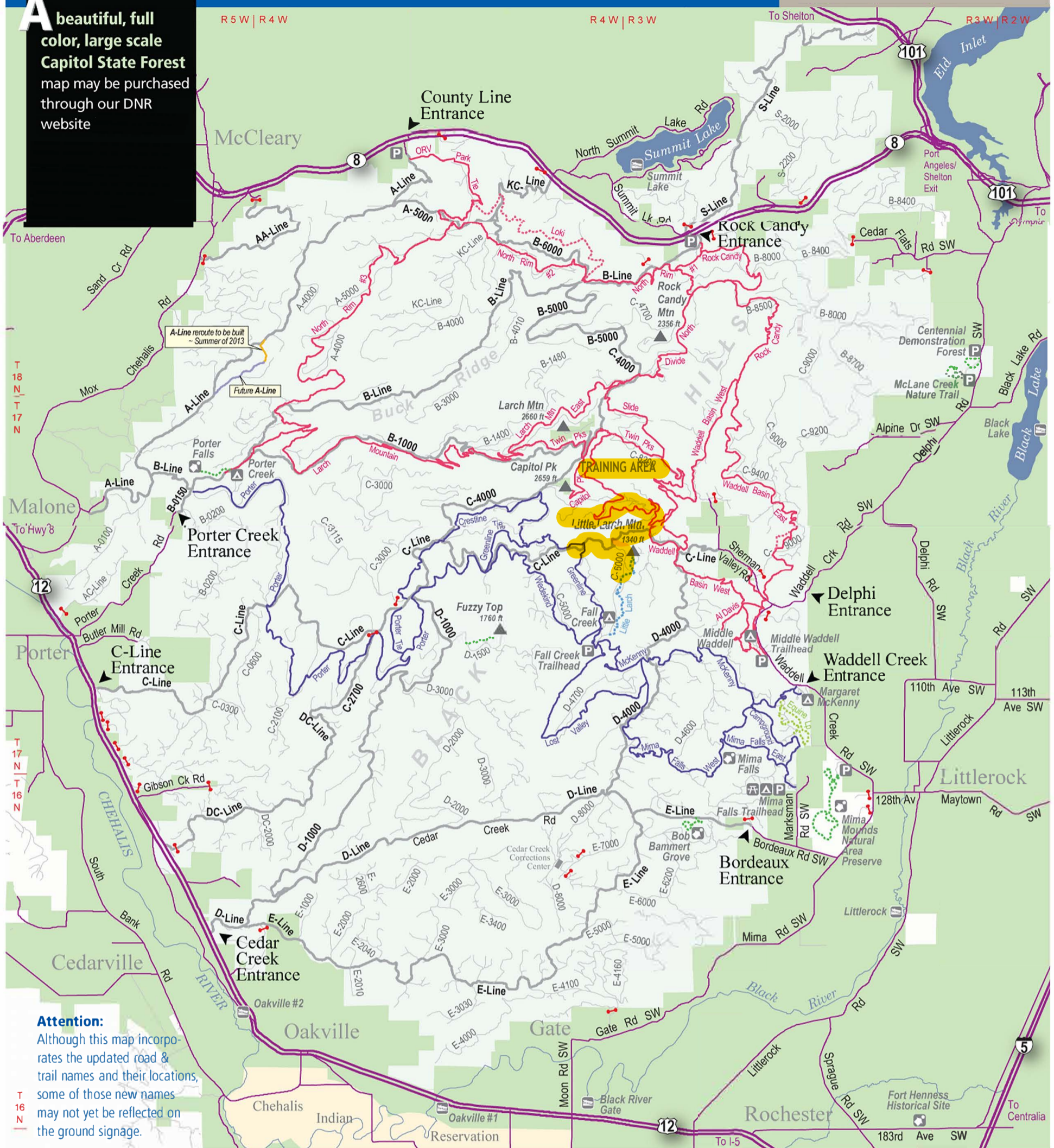


Recreation and Trails Map

Capitol State Forest

A beautiful, full color, large scale Capitol State Forest map may be purchased through our DNR website



Attention: Although this map incorporates the updated road & trail names and their locations, some of those new names may not yet be reflected on the ground signage.

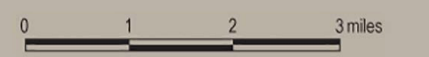
- Roads**
 - Major Highway
 - County or City Rd
 - Primary Forest Rd
 - Secondary Forest Rd
- Trails**
 - ATV / Motorcycle
 - Motorcycle Only (single track)
 - Hiking Only
 - Horse Only
 - Hike / Mtn Bike / Horse
 - Hike / Mtn Bike
- Points**
 - Campground
 - Picnic Site
 - Point of Interest
 - Parking or Trailhead
 - Boat Launch
 - Gate
 - Mountain Peak

- On the Roads**
 - CAUTION: Few roads are paved and all have soft shoulders.
 - Logging trucks, heavy equipment, and other vehicles use these roads. Be ready to yield the right-of-way.
 - DRIVE WITH CAUTION. On forest management roads, keep speed under 25 mph.
 - Speed limit in camp and picnic sites is 5 mph.
 - Please do not litter.
 - Motorcycles, horses, and mountain bikes are allowed behind gated roads shown on this map *unless* roads are posted or abandoned.

- On the Trails**
 - Stay on signed, approved trails.
 - Unsigned trails are CLOSED.
 - Respect the rights of others on trails.
 - Do not ride in streams or on road berms.
 - Watch for unmarked hazards on trails.
 - Off-road vehicles (ORVs) must have vehicle license or ORV permit tag, and U.S. Forest Service-approved spark arrester.
 - Trails are closed to ORVs and horses Dec. 1 to April 30.

- In the Campsites**
 - Respect sites designed for people with disabilities.

- Camp only in designated campgrounds and campsites open May 1 through Nov 30.
 - Do not alter or remove vegetation.
 - Limit fires to campsite fireplaces.
 - Do not burn pallets or treated woods.
 - Maintain quiet from 10 pm to 6 am.
 - Do not shoot in or near recreation sites, trails or roads. Check for hikers or other quiet users.
 - ORV use not permitted in campgrounds.
 - Use of fireworks is strictly prohibited.
 - Campsites are available first-come, first-served. No reservations.
 - Limit stay to 7 days per calendar year.



WASHINGTON STATE DEPARTMENT OF Natural Resources