

## Washington State Department of Natural Resources (DNR)

### Bidder's/Purchaser's Inspection of Sale Area and Forest Products

Acreage estimates and volume estimates contained within each timber notice of sale and each timber sale contract are made only for administrative and identification purposes. Except as expressly provided by the timber sale contract, the purchaser shall be responsible for paying the entire purchase price, even if the actual acreage or timber volume varies from the estimated quantity or volume shown.

All prospective bidders have the opportunity and are expected to inspect the sale area and the forest products located thereon. Bidders shall not rely on any representations by the State including, but not limited to, acreage estimates, volume estimates, appraisal or pre-bid documentation. The successful bidder/purchaser will further warrant that they have entered the timber sale contract without any reliance upon the DNR's volume estimates, acreage estimates, appraisals, pre-bid documentation, or any other representation by the DNR.

*Any timber sale contract arising out of these public auctions will require the successful purchaser to warrant that they are entering the timber sale contract based solely upon their own judgment of the value of the forest products, formed after their own examination and inspection of both the timber sale area and the forest products being sold.*

---

### Exclusion and Disclaimer of Warranties

The PARTIES AGREE that the IMPLIED WARRANTIES OF MERCHANTABILITY AND FITNESS FOR A PARTICULAR PURPOSE, and ALL OTHER WARRANTIES EXPRESS OR IMPLIED, ARE EXCLUDED from this transaction, and shall not apply to the goods sold. For example, THE FOLLOWING SPECIFIC MATTERS ARE NOT WARRANTED, and are EXCLUDED from this transaction:

- a. ***The merchantability of the forest products.*** The use of the term “merchantable” in any document is not intended to vary the foregoing.
- b. ***The condition of the forest products.*** All forest products will be conveyed “AS IS.”
- c. ***The acreage contained within any sale area.*** Any acreage descriptions appearing in the timber notices of sale, timber sale contract, timber sale map or other documents are estimates only, provided solely for administrative and identification purposes.
- d. ***The volume, quality, or grade of the forest products.*** The descriptions of the forest products to be conveyed are estimates only, made solely for administrative and identification purposes.
- e. ***The correctness of any soil or surface conditions, presale construction appraisals, investigations, and all other pre-bid documents prepared by or for the State.*** These documents have been prepared for the State’s appraisal purposes only.
- f. ***That the sale area is free from threatened or endangered species, or their habitat.*** The State is not responsible for any interferences with forestry operations that result from the presence of any threatened or endangered species, or the presence of their habitat, within the sale area.
- g. ***That the forestry operations to be performed under this contract will be free from regulatory actions by governmental agencies.*** The State is not responsible for actions to enforce regulatory laws, such as the Washington Forest Practices Act (Chapter 76.09 RCW), taken by the Department of Natural Resources or any other agency that may affect the operability of these timber sales.

- h. Items contained in any other documents prepared for or by the State.

Please also see timber sale contract clause G-060 for further information.

# BIDDING PROCEDURES FOR TIMBER AUCTIONS

---

*The general requirements that follow are a part of all Timber Notices of Sale to be auctioned by the Department of Natural Resources (DNR).*

---

## General Information

*The State reserves the right to waive minor irregularities and the right to reject any or all bids.*

A. This book contains the timber notices of sale and maps for each timber sale scheduled to be auctioned. More specific information can be obtained by contacting the appropriate region office at the number listed on the back cover of this book.

B. The timber notice of sale is a summary of sale information. For more specific information, interested parties are encouraged to view the Appraisal Packets on the DNR Internet Site @ [www.dnr.wa.gov](http://www.dnr.wa.gov), this will take you directly to the Product Sales Section. The Appraisal Packets contain **DRAFT** copies of the timber notice of sale, map, contract, road plan, cruise data, precruise and cruise narrative, Forest Practices Application (FPA), Hydraulics Project Approval (HPA).

C. The sale preview packets may be obtained at no charge for individual sales by visiting the appropriate region office.

D. Timber sale contracts contain extensive terms and conditions that will be binding upon successful high bidders. Each bidder should carefully review all terms contained in the appropriate **DRAFT** timber sale contract prior to bidding on a sale, and should review the final contract prior to signing. **DRAFT** timber sale contracts are contained in the preview and presales packets and are available upon request at the respective region office.

E. Sales advertised in this book have not been approved by the Board of Natural Resources and are subject to the Board's approval before they will be sold. The Board meets and approves sales approximately six weeks prior to auction. All sales are subject to confirmation by the DNR under RCW 79.15.120.

F. The State does not guarantee the accuracy of any information contained herein pertaining to particular sales. Therefore, all prospective purchasers are expected to make their own independent inspections and appraisals prior to bidding.

G. If any conflict exists between the information in the Timber Notice of Sale, timber sale map, sale preview packets and that in the timber sale contract, the signed contract will prevail.

H. Timber sales are subject to the Washington State Forest Excise Tax (RCW Chapter 84.33).

I. Within 30 days of sale confirmation, the apparent high bidder will provide to the State the Performance Security specified on each Notice of Sale.

J. Each DNR region office has information about sales offered in that region. For further information, contact the respective DNR region office. Region office addresses and telephone numbers appear on the back cover of this booklet.

K. The purchaser assumes the responsibility for any costs associated with extra maintenance or repair levied by a county for any county road used by the purchaser.

## BIDDING PROCEDURES FOR TIMBER AUCTIONS (Continued)

### Bidding Process

- A. All timber will be auctioned using the sealed bid method.
- B. Bids submitted on day of auction must be in the bid box at the specified auction location before 10:00 a.m. The respective DNR region office must receive mailed bids by 4:30 p.m., on the last business day before the auction. Bidders assume all risk for the method of delivery.
- C. The DNR has the right to reject bid forms that are completed incorrectly. *All bid forms must have an original signature on behalf of the person or entity submitting the bid, and must be on the form provided in this booklet or a photocopy thereof. Revised documents are not permissible.* Bidding instructions are on the back of the Sealed Bid Form. A bid deposit must be included in the sealed bid envelope unless using a Timber Sale Statewide Bid Bond.
- D. All bids must include the completed Sealed Bid Form and bid deposit.
- E. Bids will be opened in each respective region in the order in which sales appear in the Public Auction Sale of Timber book (alphabetically by county and by agreement number).
- F. If a tie bid occurs, the names of the tie bidders will be placed in a hat and the successful bidder will be determined by a drawing.
- G. The apparent high bidder on a particular sale will have the option of withdrawing additional sealed bids submitted for any remaining sales to be auctioned. The apparent high bidder must exercise this option within two minutes after the apparent high bidder is announced.

---

### Auction Time and Location

Auctions will start at 10:00 a.m. and close at 4:00 p.m. on the date and at the location specified in each Timber Notice of Sale.

---

### Bid Deposits

- A. Required bid deposits are listed on each Timber Notice of Sale.
- B. Bid deposits must be in the form of cash, certified check, cashiers' check, money order or bid bond.
- C. Bid bonds may be either a Timber Sale Statewide Bid Bond or a Timber Sale Per Sale Bid Bond.
- D. All bid deposits shall be submitted by the person or entity submitting the bid and made payable to the Department of Natural Resources. **Third party deposits will not be accepted.**

---

### Timber Sale Per Sale Bid Bonds

- A. The Per Sale Bid Bond shall guarantee payment of the bid deposit **within ten days of auction.**
- B. The balance between the bid bond and the Initial Deposit payment is due by 4:30 p.m., **on the day of auction.**
- C. Additional forms and instructions for a Per sale Bid Bond are available at any DNR region office.

## Timber Sale Statewide Bid Bond

- A. Statewide Bid Bonds shall guarantee payment of the Initial Deposit on any statewide timber sale while the bond is in effect.
- B. The Statewide Bid Bond must be received by the Department of Natural Resources, Product Sales & Leasing Division, PO BOX 47016, Olympia, Washington, 98504-7016, ten days in advance of the auction date. The bond shall be in the amount of \$150,000.00.
- C. The bidder must supply a list of persons authorized to bid using the bond. Bid bonds are subject to approval by the Department of Natural Resources.
- D. Successful bidders using a Statewide Bid Bond must pay the total Initial Deposit payment (10 percent of the total bid price) **by 4:30 p.m. on the day of auction.**
- E. A Statewide Bid Bond cannot be used to secure the Initial Deposit payment due the day of auction.
- F. Additional forms and instructions for a statewide bid bond are available at any DNR region office.

---

## Payments

The initial deposit for a sale is 10% of the total bid value as submitted by the apparent high bidder (25% if the bidder is a defaulter as defined under WAC 332-140-300) and never less than \$5,000.00 for lump sum sales. For Lump Sum sales appraised at less than \$5,000.00, the entire bid value is due on day of auction.

- a. Apparent high bidders using cash, certified check, cashiers' check or money order as a bid deposit must pay the total Initial Deposit amount by 4:30 p.m. on auction day.
- b. Apparent high bidders using a Timber Sale Per Sale Bid Bond as a bid deposit must pay the difference between the bid deposit and the total initial deposit by 4:30 p.m., on the day of auction. The bid bond amount must be replaced with a certified check, cashier's check, bank draft, cash, money order, or wire transfer within ten days of the auction.
- c. Apparent high bidders using a Timber Sale Statewide Bid Bond must pay the entire Initial Deposit amount by 4:30 p.m. on the day of auction.

---

## Fees due on the day of sale must be paid by 4:30 p.m.

All payments must be in the form of a certified check, cashier's check, bank draft, cash, money order or wire transfer.

---

## Eligibility to Bid

In order to bid on State timber sales you must be:

- 18 years of age (or have a co-signer who meets the eligibility requirements),
- Licensed to do business in the State of Washington,
- Eligible to bid on Export Restricted timber, and
- Capable of meeting all contract obligations.

## Authorized Representatives

Companies may only use authorized representatives or company officers to bid on State sales, sign State documents or sign checks. A list of authorized representatives and their specific authorities must be submitted in writing to the Department of Natural Resources Product Sales & Leasing Division, PO BOX 47016, Olympia, Washington, 98504-7016, ten days in advance of the auction. A company owner or officer must sign this submittal.

State of Washington  
Department of Natural Resources  
Doug Sutherland, Commissioner of Public Lands

SEALED BID FORM

Sale Name \_\_\_\_\_ Agreement Number \_\_\_\_\_

\_\_\_\_\_ hereby submits the following bid for timber.  
(Print full, legal company name)

\_\_\_\_\_  
(Street address, City, State, Zip Code)

\_\_\_\_\_  
(Phone Number)

**Lump Sum Bid** (Not Including Fees) \$\_\_\_\_\_ **For Total Sale**

**Weight Scale Sale Bid** (Not Including Fees) \$\_\_\_\_\_ / **Ton**

**Scribner Scale Sale Bid** (Not Including Fees) \$\_\_\_\_\_ / **MBF**

**BID DEPOSIT**

**Bid Deposit Amount:** \$\_\_\_\_\_

**Bid Deposit Type:**

- ☐ Cash, certified check, cashiers check, or money order  
☐ Per Sale Bid Bond  
☐ Statewide Bid Bond, Number \_\_\_\_\_

The Successful Bidder agrees to furnish, **within 30 days of confirmation date**, Performance Security acceptable to the State in the amount specified on the Notice of Sale. Performance Security must guarantee performance of all provisions of the contract and payment of any damages caused by operations under the contract or resulting from the successful bidders noncompliance with any rule or law.

**Bidder's Warranty and Bid Signature**

*By signing and submitting this bid as an offer to purchaser forest products from the State, the Bidder hereby warrants to the State that they have had an opportunity to fully inspect the sale area and the forest products being sold. Bidder further warrants to the State that they enter this bid based upon their own judgments of the value of the forest products, formed after their own examination and inspection of both the timber sale area and the forest products being sold. Bidder also warrants to the State that they enter this bid without any reliance upon the volume estimates, acreage, appraisals, pre-bid documentation, or any other representation by the Washington State Department of Natural Resources.*

\_\_\_\_\_  
(Signature of Authorized Representative submitting this bid)

Date \_\_\_\_\_

\_\_\_\_\_  
(Print **name and title** of Authorized Representative submitting this bid)

**Note: all sales are subject to confirmation by the Commissioner of Public Lands (Refer to RCW 79.15.120)**

# Instructions For Completing Sealed Bid Form

*All bids submitted for the purchase of forest products being sold by the Washington State Department of Natural Resources must have an original signature on behalf of the person or entity submitting the bid, and must be on the form provided in this booklet or a photocopy thereof. The DNR will not accept bids that are not signed, and will not accept bids that are not on the current, approved bid form. All appropriate blanks on bid form must be completed including the bid bond number if the bidder is relying upon a bid bond for bid deposit.*

*For more specific information, contact the appropriate region office.*

---

## In-Person Bids

- A. Sealed bids must be in auction box before 10:00 a.m. on the day of auction at the location specified in the Timber Notice of Sale.
  - B. Sealed bids must be submitted in an envelope with the name of the sale, the bidder's name and the contract number clearly written on the outside of the envelope. The full legal name and business address of the bidder must be inserted where indicated on the form, and must be on the bid bond and timber sale contract. The bid form must be signed by an authorized representative. When a bidder has more than one person authorized to bid, documentation of those persons with signature authority for bidding must accompany the bid or be on file at the region office. Sealed bid envelopes are available at all region offices. One bid per envelope.
  - C. Sealed bid envelopes **must** contain a completed bid form and a bid deposit.
  - D. Sealed bid envelopes **may** contain a check for the Initial Deposit amount and a check for fees.
- 

## Mailed Bids

- A. Bids that are mailed are required to have printed on the outside: "DO NOT OPEN UNTIL SALE DATE. SEALED BID ENCLOSED". The sealed bid envelope(s) will be enclosed inside the mailed-in envelope. Mailed bids must be submitted in an envelope with the name of the sale, the bidder's name and the agreement number clearly written on the outside of the envelope. The full legal name and business address of the bidder must be inserted where indicated on the form, and must be the same on the bid bond and timber sale contract. The Sealed Bid Form must be signed by an authorized representative. When a bidder has more than one person authorized to bid, then documentation of those persons with signature authority for bidding must accompany the bid or be on file at the region office. Mail-in envelopes are available at all region offices. One bid per mailed-in envelope.
  - B. Bids that are mailed will be accepted up to 4:30 p.m. the last business day before the auction by the region office in which the sale is located. Bidders assume the risk for the method of delivery. The DNR assumes no responsibility for any delays caused by any delivery service.
  - C. Sealed bid envelopes **must** contain a completed bid form and a bid deposit.
  - D. Sealed bid envelopes **may** contain a check for the Initial Deposit amount and a check for fees.
- 

## Initial Deposit:

**Lump Sum Sales** - Initial Deposit must equal 10% of the total bid submitted.  
(25% if the bidder is a defaulter as defined under WAC 332-140-300)

**Weight Scale Sales** - Initial Deposit must equal 10% of the bid per ton multiplied by the total sale estimated tonnage. (25% if the bidder is a defaulter as defined under WAC 332-140-300)

**Scribner MBF Scale Sales** - Initial Deposit must equal 10% of the bid per MBF multiplied by the total sale MBF. (25% if the bidder is a defaulter as defined under WAC 332-140-300)

State of Washington  
Department of Natural resources  
Doug Sutherland, Commissioner of Public Lands

STATEWIDE BID BOND

Bond Number \_\_\_\_\_

\_\_\_\_\_ of \_\_\_\_\_,  
(Principal's Name) (City, State)

hereinafter called PRINCIPAL, and \_\_\_\_\_ hereinafter called SURETY,

a corporation organized under the laws of the State of \_\_\_\_\_, and authorized to transact surety business in the State of Washington, as SURETY, are held and firmly bound jointly and severally to the State of Washington, Department of Natural Resources, hereinafter called the STATE, in the sum of \$150,000.00 Dollars, lawful money of the United States of America. The PRINCIPAL binds itself, its heirs, executors, administrators, successors, and assigns, and the SURETY binds itself, its successors, and assigns, all jointly and severally.

This bond shall be governed by the laws of the State of Washington. In the event of a lawsuit involving this bond, a venue shall be proper only in Thurston County Superior Court.

Signed, sealed and dated this \_\_\_\_\_ day of \_\_\_\_\_, \_\_\_\_\_.  
(month) (year)

This statewide bid bond may be used for bidding between the following dates:

Starting: \_\_\_\_\_

Ending: \_\_\_\_\_

**It Is Hereby Understood and Agreed:**

If PRINCIPAL is an apparent high bidder, PRINCIPAL shall before 4:30 p.m., on day of sale, pay to the STATE the amount of the initial deposit in the form of a certified check, cashier's check, bank draft, cash or money order, then this agreement shall be void for the sale on which the payment is made; otherwise, it will remain in force.

SURETY will make payment to the STATE within ten days after demand by the STATE if the PRINCIPAL shall fail to make timely payment as described above.

The SURETY may cancel this bond by sending a written notice to the STATE, not less than forty-five days before a cancellation date; liability shall terminate as to acts or omissions of the PRINCIPAL that occur after the cancellation date.

The PRINCIPAL and the SURETY executed this bond on the date first mentioned.

**Principal:** (Above named)

Signature: \_\_\_\_\_

Name: \_\_\_\_\_

Title: \_\_\_\_\_

Address: \_\_\_\_\_

City: \_\_\_\_\_  
State & Zip Code

**Surety:** (Above named)

Signature: \_\_\_\_\_

Name: \_\_\_\_\_

Title: \_\_\_\_\_

Address: \_\_\_\_\_

City: \_\_\_\_\_  
State & Zip Code

**Surety:** (Local Office of Authorized agent)

Signature: \_\_\_\_\_

Name: \_\_\_\_\_

Title: \_\_\_\_\_

Address: \_\_\_\_\_

City: \_\_\_\_\_  
Above

State & Zip

Notary or Company Seal in Space

## Instructions For Completing Timber Sale Statewide Bid Bond

- A. This form is authorized for use as bid guaranty to qualify for bidding on Washington State Department of Natural Resources timber sales.
- B. The Statewide Bid Bond may be used as bid guaranty on more than one timber sale.
- C. The full legal name and business address of the PRINCIPAL must be inserted where indicated and must be the same as will appear on the bidding record and timber sale contract. The bond must be signed by an authorized person. Additionally, the name must be typed or printed below the signature and title must be shown.
- D. The full legal name and business address of the SURETY must be inserted where indicated. The bond must be signed by an authorized person. Additionally, the name must be typed or printed below the signature and the title must be shown.
- E. If the SURETY does not have a Washington State office or resident agent, but is authorized to transact surety business in the State of Washington as SURETY, it may leave this signature block blank.
- F. This form must be received by the Department of Natural Resources, Product Sales and Leasing Division, PO BOX 47016, Olympia, Washington, 98504-7016, ten days in advance of the auction.
- G. The PRINCIPAL must submit a list of authorized bidders with the Statewide Bid Bond Form.
- H. **The State reserves the right to reject *incomplete* or *incorrect* bid bond forms, making such forms unacceptable as bid guaranty.**



State of Washington  
Department of Natural Resources  
Doug Sutherland, Commissioner Of Public Lands

Timber Sale Per Sale Bid Bond

Bond Number\_\_\_\_\_

\_\_\_\_\_ of \_\_\_\_\_, hereinafter called PRINCIPAL, and \_\_\_\_\_, hereinafter called SURETY, a corporation organized under the laws of the State of \_\_\_\_\_ and authorized to transact surety business in the State of Washington, as SURETY, are held and firmly bound jointly and severally to the State of Washington, Department of Natural Resources, hereinafter called the STATE, in the sum of \$\_\_\_\_\_Dollars, lawful money of the United States of America. The PRINCIPAL binds itself, its heirs, executors, administrators, successors, and assigns, and the SURETY binds itself, its successors, and assigns, all jointly and severally.

This bond shall be governed by the laws of the State of Washington. In the event of a lawsuit involving this bond, venue shall be proper only in Thurston County Superior Court.

Signed, sealed, and dated this\_\_\_\_\_day of \_\_\_\_\_, 20\_\_\_\_\_.

BID IDENTIFICATION:

SALES NAME(S)	REQUIRED DEPOSIT	AGREEMENT NUMBER(S)

DATE OF BID: \_\_\_\_\_

It Is Hereby Understood and Agreed:

If PRINCIPAL is the high bidder on the sale(s) identified above and, within ten (10) days of the day of sale, transmits cash, certified check, cashier=s check, bank draft or money order, payable to the STATE, in the amount of the bid guaranty required by the terms of the Notice of Sale, *then* this obligation shall be void; *otherwise*, it shall remain in force.

SURETY will make payment to the STATE within ten (10) days after demand by the STATE whenever the PRINCIPAL shall fail to make timely payment as described above.

IN WITNESS WHEREOF: the PRINCIPAL and the SURETY have caused this bond to be executed on the date first mentioned.

SECOND OFFICER:

Signature: \_\_\_\_\_

Name: \_\_\_\_\_

Title: \_\_\_\_\_

PRINCIPAL: (Above Named)

Signature: \_\_\_\_\_

Name: \_\_\_\_\_

Title: \_\_\_\_\_

Address: \_\_\_\_\_

SURETY: (Local Office of Authorized Agent)

Signature:\_\_\_\_\_

Name: \_\_\_\_\_

Title: \_\_\_\_\_

Address: \_\_\_\_\_

City: \_\_\_\_\_

State & Zip: \_\_\_\_\_

City: \_\_\_\_\_

State & Zip:

SURETY: (Above Named)

Signature: \_\_\_\_\_

Name: \_\_\_\_\_

Title: \_\_\_\_\_

Address: \_\_\_\_\_

City: \_\_\_\_\_

State & Zip\_\_\_\_\_

NOTARY OR COMPANY SEAL IN THE SPACE ABOVE

## Instructions For Completing Timber Sale PerSale (s) Bid Bond

- A. This form is authorized for use as bid guaranty to qualify for bidding on Washington State Department of Natural Resources timber sales.
- B. The Timber Sale Per Sale Bid Bond may be used as bid guaranty on more than one timber sale auction held the same date at the same location.
- C. The full legal name and business address of the PRINCIPAL must be the same as will appear on the bidding record and timber sale contract. The bond must be signed by an authorized person, the name typed or printed, and title shown. If PRINCIPAL is a corporation, a second officer must sign in the space to the left of the signature of the officer executing for the PRINCIPAL.
- D. The full legal name and business address of the SURETY must be inserted where indicated. The bond must be signed by an authorized person. Additionally, the name must be typed or printed below the signature and the title must be shown. If this person is not an officer of the corporation, evidence of authority must be submitted.
- E. If the SURETY does not have a Washington State office or resident agent, but is authorized to transact surety business in the State of Washington as Surety, it may leave the local office signature block blank.
- F. The date of the bid bond must not be later than the auction date.
- G. **The State reserves the right to reject *incomplete or incorrect* bid bond forms, making such forms unacceptable as guaranty.**

STATE OF WASHINGTON  
DEPARTMENT OF NATURAL RESOURCES  
Doug Sutherland, Commissioner of Public Lands

LOG SORT SEALED BID FORM

Sale Name \_\_\_\_\_ Agreement Number \_\_\_\_\_ Date \_\_\_\_\_.

\_\_\_\_\_ hereby submits the following bid for delivered logs.  
(Print Company Name)

\_\_\_\_\_ Telephone Number \_\_\_\_\_  
(Print Name Authorized Company Representative) (Contact for bid result notification)

\_\_\_\_\_  
(Street Address)

\_\_\_\_\_  
(City, State and Zip)

Agreement Number	Sort Number	Delivered Logs Bid Amount (fill in one only)	
		\$ / MBF	\$ / ton

Bid Deposit Amount \$\_\_\_\_\_

Bid Deposit Type: ☐ Cash, Certified Check, Cashiers Check, or Money Order  
☐ Per Sale Bid Bond  
☐ Statewide Bid Bond, Number \_\_\_\_\_

The successful bidder agrees to furnish payment security acceptable to the State in the amount as described in clause P-041 of the Purchaser’s contract prior to log delivery and at a date to be determined by the State.

**Bidder’s Warranty and Bid Signature**

By signing and submitting this bid as offer to purchase forest products from the State, the Bidder hereby warrants to the State that they have had an opportunity to fully inspect the sale area and the forest products being sold. Bidder further warrants to the State that they enter this bid based solely upon their own judgment of the value of the forest products, formed after their own examination and inspection of both the timber sale area and the forest products being sold. Bidder also warrants to the State that they enter this bid without any reliance upon the volume estimates, acreage, estimates, appraisals, pre-bid documentation, or any other representation by the State Department of Natural Resources.

\_\_\_\_\_  
(Signature of Authorized Representative submitting this bid)

\_\_\_\_\_  
(Date of Signature)

\_\_\_\_\_  
(Print name and title of Authorized Representative submitting this bid)

**NOTES:** A separate bid form is required for each log sort bid and must be delivered in a separate envelope. Photocopies of this bid form may be used. Each photocopy must have original signatures. All sales are subject to confirmation by the Commissioner of Public Lands as per RCW 79.15.100.

\_\_\_\_\_

SUPPLEMENTAL INFORMATION FORM

Sale Name \_\_\_\_\_

Agreement Number \_\_\_\_\_

Sort # \_\_\_\_\_

Provide the following information for log manufacturing specifications, delivery locations, weigh and scaling locations.

Log Manufacturing Specifications:

Enter one or more preferred log lengths for each log length range below.	Bidder's Preferred Log Lengths (Log lengths exclude trim)		
	1	2	3
12 ft. through 18 ft.			
20 ft. through 28 ft.			
30 ft. through 40 ft.			

Minimum log trim: \_\_\_\_\_ inches.

Additional Log or Pole Length Information:

To provide additional preferred cutting information you may attach a separate sheet or “Cutting card”.

Log Delivery Specifications:

Designate the point of delivery and address (must be a street address)

\_\_\_\_\_  
(Location Name)

\_\_\_\_\_  
(Street Address)

\_\_\_\_\_  
(City, State and Zip)

Weigh and Scaling Facilities:

Designate the state approved Weigh and Scaling facility closest to the point of delivery.

State approved Weighing and scaling facility address:

\_\_\_\_\_  
(Location Name)

\_\_\_\_\_  
(Street Address)

\_\_\_\_\_  
(City, State and Zip)

Final contract award is contingent upon the State’s haul cost analysis. Actual haul route may vary and is subject to change at the State’s discretion.

## **Instructions for Completing the Log Sort Sealed Bid and Supplemental Information Forms.**

All bids submitted for the purchase of forest products being sold by the Washington State Department of Natural Resources must have an original signature on behalf of the person or entity submitting the bid, and must be on the form(s) provided in this booklet or a photocopy thereof. The DNR will not accept bids that are not signed, and will not accept bids that are not on the current, approved bid form. All appropriate blanks including Agreement Number, Sort Number, Bid amount (per mbf or ton as appropriate for the sort), Bid deposit amount and type. Signatures and date on bid form must be completed including the bid bond number if bidder is relying upon a bid bond for bid deposit.

Bids may not be accepted if the Supplemental Information Form is not included with the approved Log Sort Sealed Bid form or is incomplete.

For more specific information, contact the appropriate region office.

### **In-Person Bids**

- A. Sealed bids must be in auction box or auction envelope before 10:00 a.m. on the day of sale at the location specified in the notice of sale.
- B. Sealed bids must be submitted in an envelope with the name of the sale, the bidder's name and the contract agreement number clearly written on the outside of the envelope. The full legal name and business address of the bidder must be inserted where indicated on the form, and must be the same as the name on the bid bond and timber sale contract. The bid form must be signed by an authorized person. When a bidder has more than one person authorized to bid, then documentation of those persons with signature authority for bidding must accompany the bid or be on file at the region office. Sealed bid envelopes are available at all region offices. One bid per envelope, please.
- C. Sealed bid envelopes must contain the following:
  - 1. A completed Log Sort Sealed Bid form;
  - 2. A completed Supplemental Information form; and
  - 3. A bid deposit

### **Mailed Bids**

- A. Mail-in bid envelopes are required to have printed on the outside: "DO NOT OPEN UNTIL SALE DATE. SEALED BID ENCLOSED." The sealed bid envelope(s) will be enclosed inside the mailed-in envelope. Mailed bids must be submitted in an envelope with the name of the sale, the bidder's name and the agreement number clearly written on the outside of the envelope. The full legal name and business address of the bidder must be inserted where indicated on the form, and must be the same on the bid bond and timber sale contract. The bid form must be signed by an authorized person. When a bidder has more than one person authorized to bid, then documentation of those persons with signature authority for bidding must accompany the bid or be on file at the region office. Mail-in envelopes are available at all region offices. One bid per mailed-in envelope, please.
- B. Mail-in or otherwise delivered bids will be accepted up to 4:30 p.m. the last business day before the auction by the region office in which the sale is located. Bidders assume the risk for the method of delivery they chose. The DNR assumes no responsibility for any delays caused by any delivery service.
- C. Sealed bid envelopes must contain the following:
  - 1. A completed Log Sort Sealed Bid form;
  - 2. A completed Supplemental Information form; and
  - 3. A bid deposit



Summary Report of All Sales for the Month of September 2006

Board Sales					
<u>County</u>	<u>Region</u>	<u>Agree #</u>	<u>Sale Name</u>	<u>Volume</u>	<u>Value</u>
Ferry	Northeast	78812	SAN POIL	2,794	\$951,000.00
Grays Harbor	Pacific Cascade	78641	*DRAG SAW	3,637	\$1,194,000.00
King	South Puget	77623	*DOG HAIR	3,219	\$1,192,000.00
Lewis	Pacific Cascade	77532	*HAPPY CAMP HARDWOOD	1,030	\$297,000.00
Lewis	Pacific Cascade	78675	*POLE TENTIAL	3,066	\$1,424,000.00
Mason	South Puget	77659	*NOMAD	6,216	\$2,191,000.00
Pacific	Pacific Cascade	77431	*DESIRE ALDER	1,887	\$404,000.00
Skagit	Northwest	78601	*HONEY POTTS LOG SORTS	3,734	\$1,992,159.80
Stevens	Northeast	78815	LITTLE SWEDEN SORTS	3,164	\$1,360,700.00
Total				28,747	\$11,005,859.80

Sales marked with an asterisk (\*) are lands certified under the *Sustainable Forestry Initiative*®Program. [www.aboutsfi.com](http://www.aboutsfi.com)





TIMBER NOTICE OF SALE

SALE NAME: SAN POIL

AGREEMENT NO: 30-078812

AUCTION:

September 26, 2006 starting at 10:00 a.m.,  
Northeast Region Office, Colville, WA

COUNTY: Ferry

SALE LOCATION:

Sale located approximately 7 miles east of Republic, Washington in Ferry County

PRODUCTS SOLD  
AND SALE AREA:

All green conifer species banded with orange paint in Units #6 and #7 bounded by white timber sale boundary tags and red ribbon; all green Douglas fir, western larch, and ponderosa pine less than 28 inches in diameter at breast height and all other green conifer species not banded with blue paint in Units #1, #2, #3, #4, #5, and #8 bounded by white timber sale boundary tags and red ribbon; and all species bounded by right of way boundary tags on part(s) of Sections 35 and 36 all in Township 37 North, Range 33 East, W.M., containing 287 acres, more or less.

ESTIMATED SALE VOLUMES AND QUALITY:

Species	Avg DBH	Ring Count	Total MBF	MBF by Grade					
				#1	#2	#3	#4	#5	#6
Douglas fir	11.1		2,220		300	463	1,457		
Larch	11.1		349		60	89	200		
Ponderosa pine	15.7		143				35	108	
Spruce	10.1		82			8	74		
Sale Total			2,794						

MINIMUM BID:

\$951,000.00

BID METHOD:

Sealed Bids

PERFORMANCE  
SECURITY:

\$100,000.00

SALE TYPE:

Lump Sum

EXPIRATION DATE:

October 31, 2008

ALLOCATION:

Export Restricted

BID DEPOSIT:

\$95,100.00 or Bid Bond. Said deposit shall constitute an opening bid at the appraised price.

HARVEST METHOD:

Rubber tired skidder and Track skidder. Falling and yarding equipment will not enter the inner zone on riparian management zones in Units #6 and #7. Directional falling required and yarding equipment with winch line capabilities will be required to harvest these units. Falling and Yarding will not be permitted from March 15 to June 1 unless authorized in writing by the Contract Administrator due to spring breakup.

ROADS:

75.30 stations of required construction. 5.40 stations of required reconstruction. 125.25 stations of pre-haul maintenance required. 10.70 stations of optional pre-haul maintenance. 30.20 stations of road abandonment required. Road construction will not be permitted from December 1 to May 1 unless authorized in writing by the Contract Administrator due to frozen conditions and spring breakup. The hauling of forest products will not be permitted from March 15 to June 1 unless authorized in writing by the Contract Administrator due to spring breakup.

ACREAGE DETERMINATION

CRUISE METHOD:

Acreage determined using GPS methods. Acreage shown above is net harvest acres in harvest units and external right of ways. There are 294 gross acres which includes other existing road right of ways. All species 7.0 to 17.5 inches dbh cruised to a 4.6 inch dib top. All species, except western red cedar, 17.6 inches dbh and greater cruised to 40% of dob at 16 feet. Western red cedar 17.6 inches dbh and greater cruised to 50% of dob at 16 feet. The above Grades represent Bureau Grades as #1 for Special Mill and better grades, as #2 for #2 Sawlog, as #3 for #3 Sawlog, as #4 for #4 Sawlog, as #5 for #5 Sawlog, as #6 for #6 Sawlog. 4" to 5" top (all species) represented in #4 Sawlog grade.

FEES:

\$37,020.00 is due on day of sale. \$9.00 per MBF is due upon removal. These are in addition to the bid price.

SPECIAL REMARKS:

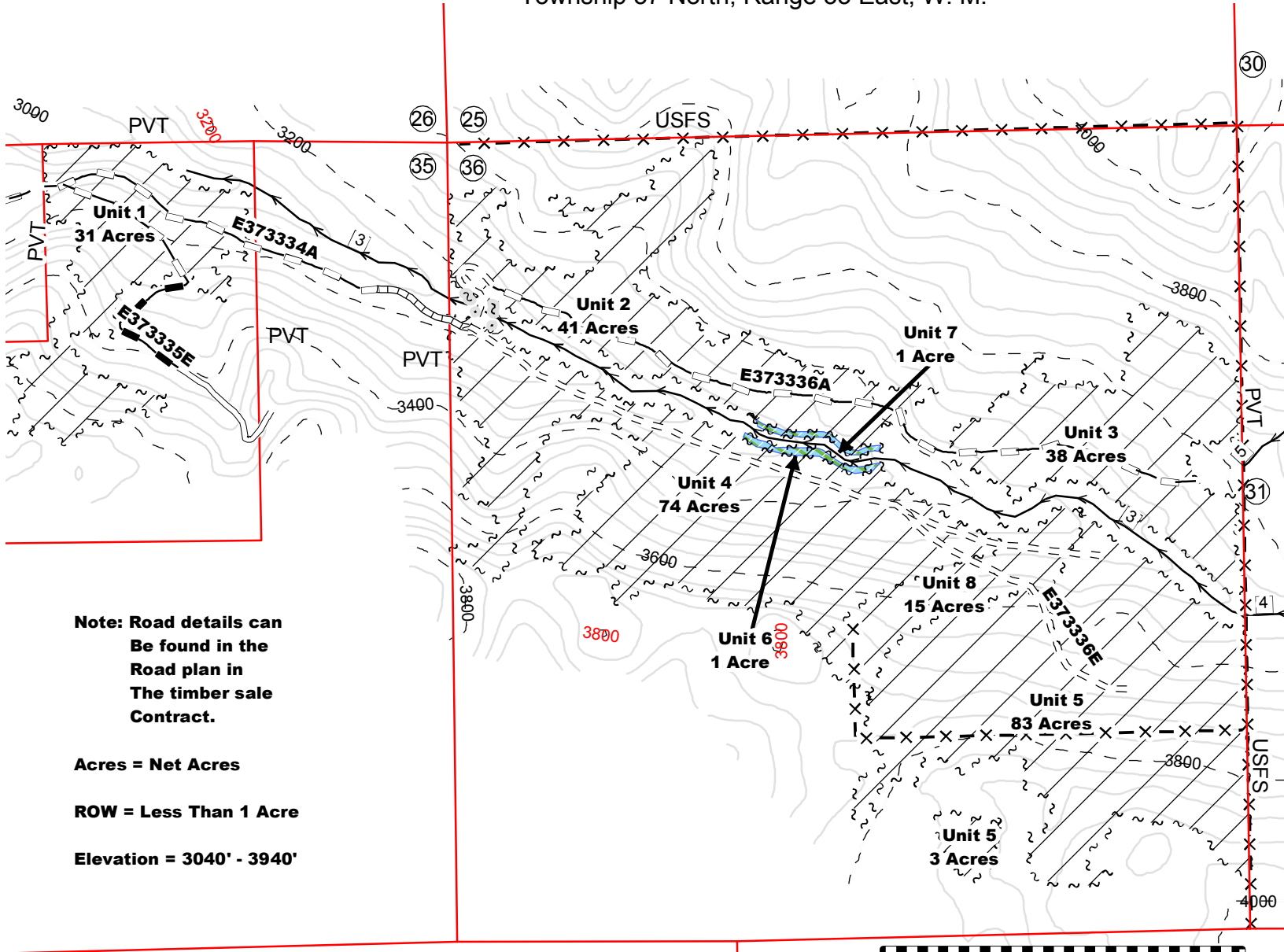
A gate restricts access to the sale area. Contact the Northeast Region Office at (509) 684-7474 for access. Units #6 and #7 are CMER study sites for riparian harvest. One fish passage type crossing will be installed with this sale. Purchaser's contractor shall thoroughly clean all skidding, falling, harvesting, and loading equipment prior to entry onto State land to remove contaminated soils and noxious weed seed.

Timber Sale Map

SALE NAME: San Poil  
AGREEMENT NO.: 30-078812  
TRUST(S): School, Indemnity

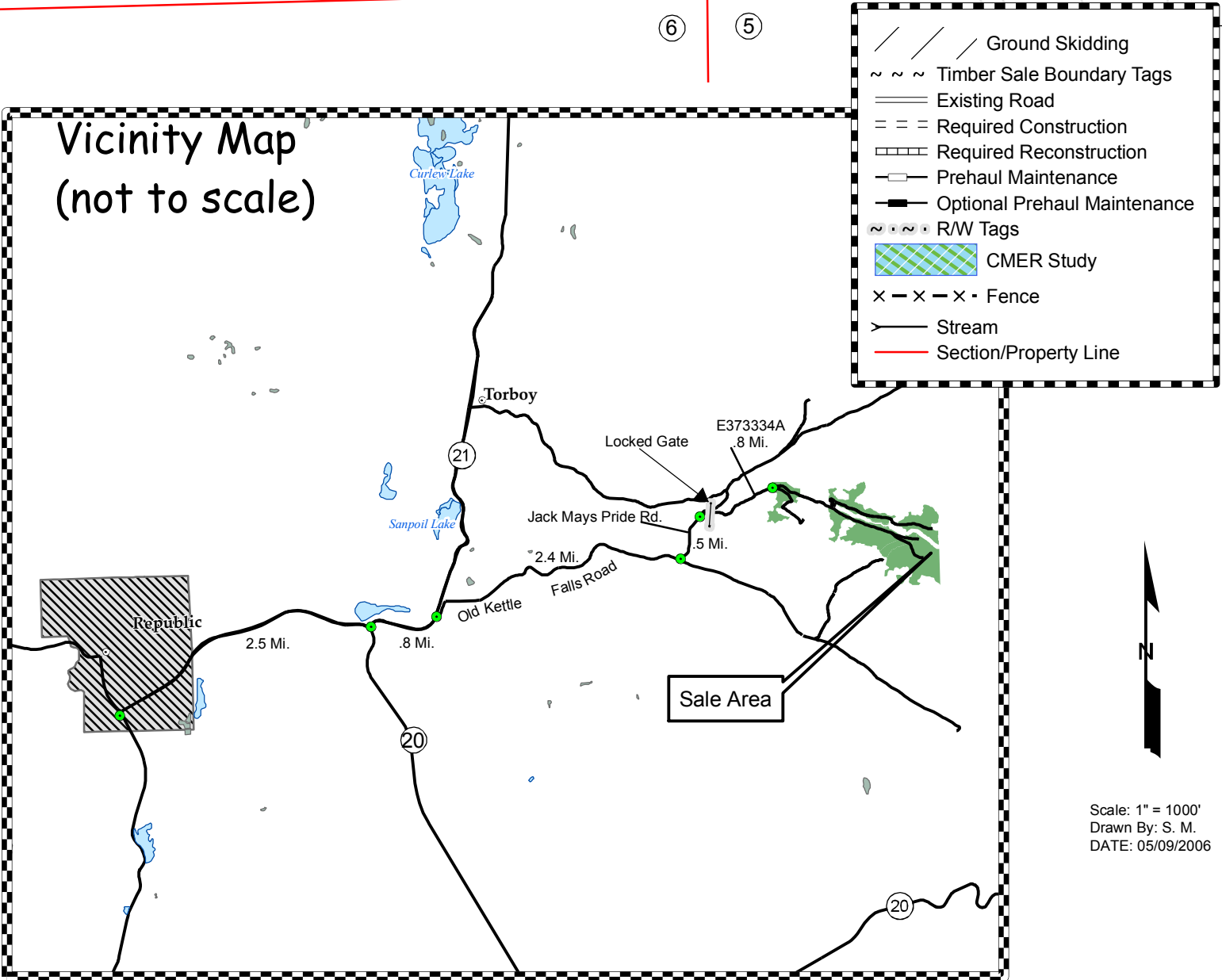
REGION: NORTHEAST  
COUNTY: Ferry

Township 37 North, Range 33 East, W. M.



**Note: Road details can  
Be found in the  
Road plan in  
The timber sale  
Contract.**

**Acres = Net Acres**  
**ROW = Less Than 1 Acre**  
**Elevation = 3040' - 3940'**



TIMBER NOTICE OF SALE

**SALE NAME:** DRAG SAW

**AGREEMENT NO:** 30-078641

**AUCTION:** September 28, 2006 starting at 10:00 a.m., **COUNTY:** Grays Harbor  
Pacific Cascade Region Office, Castle Rock, WA

**SALE LOCATION:** Sale located approximately 8 miles northeast of Malone, WA

**PRODUCTS SOLD AND SALE AREA:** All timber, except snags, pre-existing stumps, down timber existing five years prior to the day of sale, trees tagged out with leave tree area tags, and leave trees marked with blue paint, bounded by the following: timber sale boundary tags, reprod and the B-2010 road in Unit #1, timber sale boundary tags, reprod, the B-2010 and B-2015 roads in Unit #2 on part(s) of Sections 1 all in Township 17 North, Range 5 West, Sections 6 all in Township 17 North, Range 4 West, W.M., containing 90 acres, more or less.

**ESTIMATED SALE VOLUMES AND QUALITY:**

Species	Avg DBH	Ring Count	Total MBF	MBF by Grade								UT
				1P	2P	3P	SM	1S	2S	3S	4S	
Douglas fir	24.8	7	2,525				100		1,950	438	37	
Red alder	14		560						49	374	137	
Hemlock	12.7	7	549						192	251	106	
Maple	11		3								3	
Sale Total			3,637									

**MINIMUM BID:** \$1,194,000.00 **BID METHOD:** Sealed Bids

**PERFORMANCE SECURITY:** \$100,000.00 **SALE TYPE:** Lump Sum

**EXPIRATION DATE:** October 31, 2008 **ALLOCATION:** Export Restricted

**BID DEPOSIT:** \$119,400.00 or Bid Bond. Said deposit shall constitute an opening bid at the appraised price.

**HARVEST METHOD:** Cable and Shovel. A detailed felling and yarding plan shall be required prior to any harvest activities and approved in writing by the Contract Administrator. See Clause H-140 for further harvest specifications. Shovel yarding will not be permitted from September 30 to May 1 unless authorized in writing by the Contract Administrator.

**ROADS:** 13.14 stations of required reconstruction. 27.76 stations of optional construction. 0.60 stations of optional reconstruction. 67.30 stations of pre-haul maintenance. Rock is available at no charge from a State pit in Section 4, T17N, R04W, W.M. Road construction will not be permitted from September 30 to May 1 unless authorized in writing by the Contract Administrator.

**ACREAGE DETERMINATION**

**CRUISE METHOD:** The sale acres were determined by GPS. The sale area was cruised using a variable plot cruise method. Harvesting activities are estimated to be approximately 40% shovel and 60% cable harvesting.

**FEES:** \$48,190.00 is due on day of sale. \$9.00 per MBF is due upon removal. These are in addition to the bid price.

**SPECIAL REMARKS:** Purchaser assumes responsibility for any county road use permits and for all costs associated with permits and extra maintenance or repair levied by a county for any county road used by Purchaser.

TIMBER SALE MAP

SALE NAME: DRAG SAW

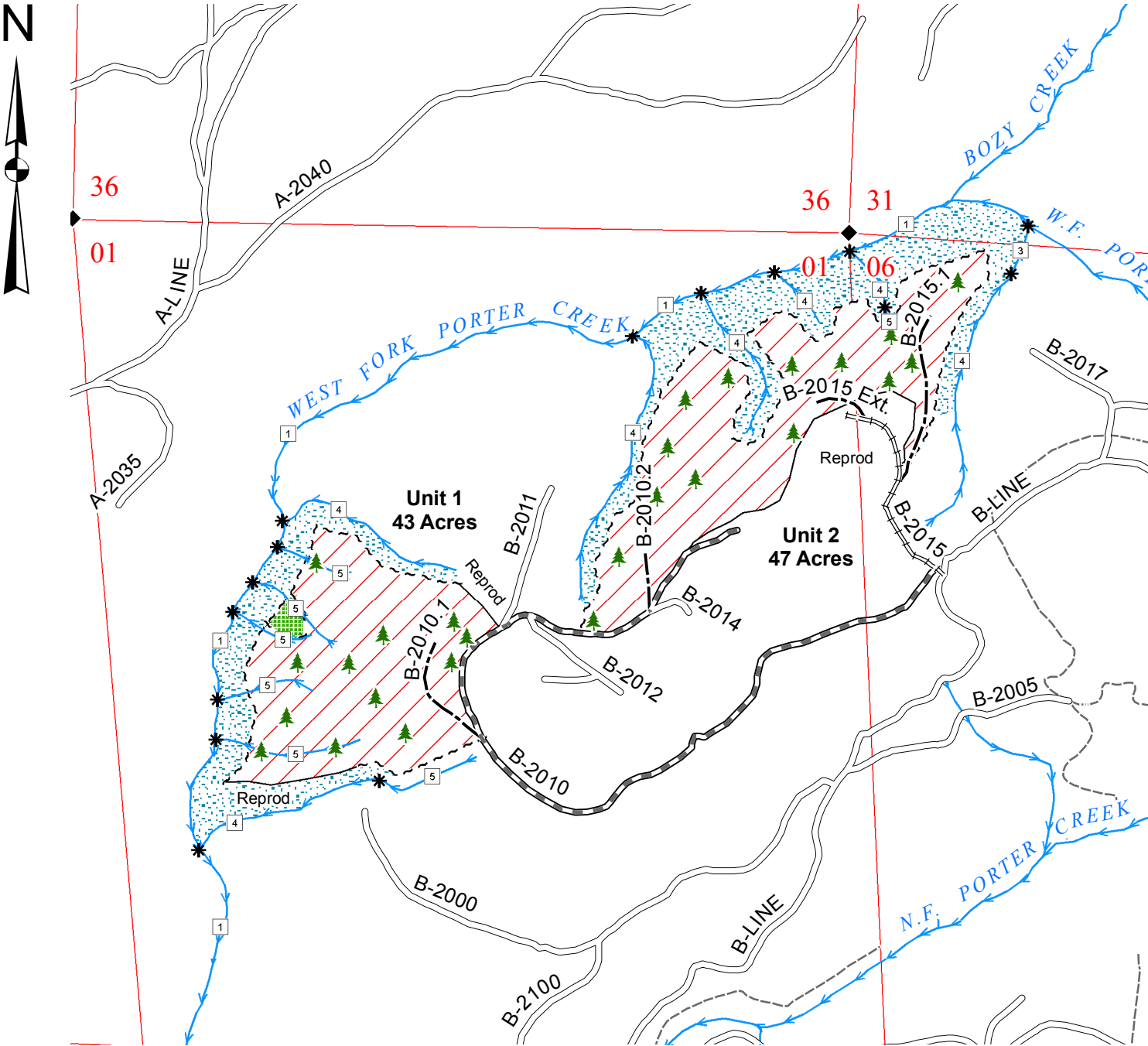
AGREEMENT NO: 30-078641

TRUST(S): State Forest Board Purchase (02), Common School (03), & IFLR (42)

REGION: Pacific Cascade

COUNTY(S): Grays Harbor

Township 17 North, Range 04 & 05 West, W.M.



Legend

Sale Area

Leave Tree Area

RMZ

Sale Boundary Tags (White)

Leave Tree Tags (Yellow)

Property Line

Existing Roads

Pre-haul Maintenance

Required Reconstruction

Optional Construction

Old Grade / Trail

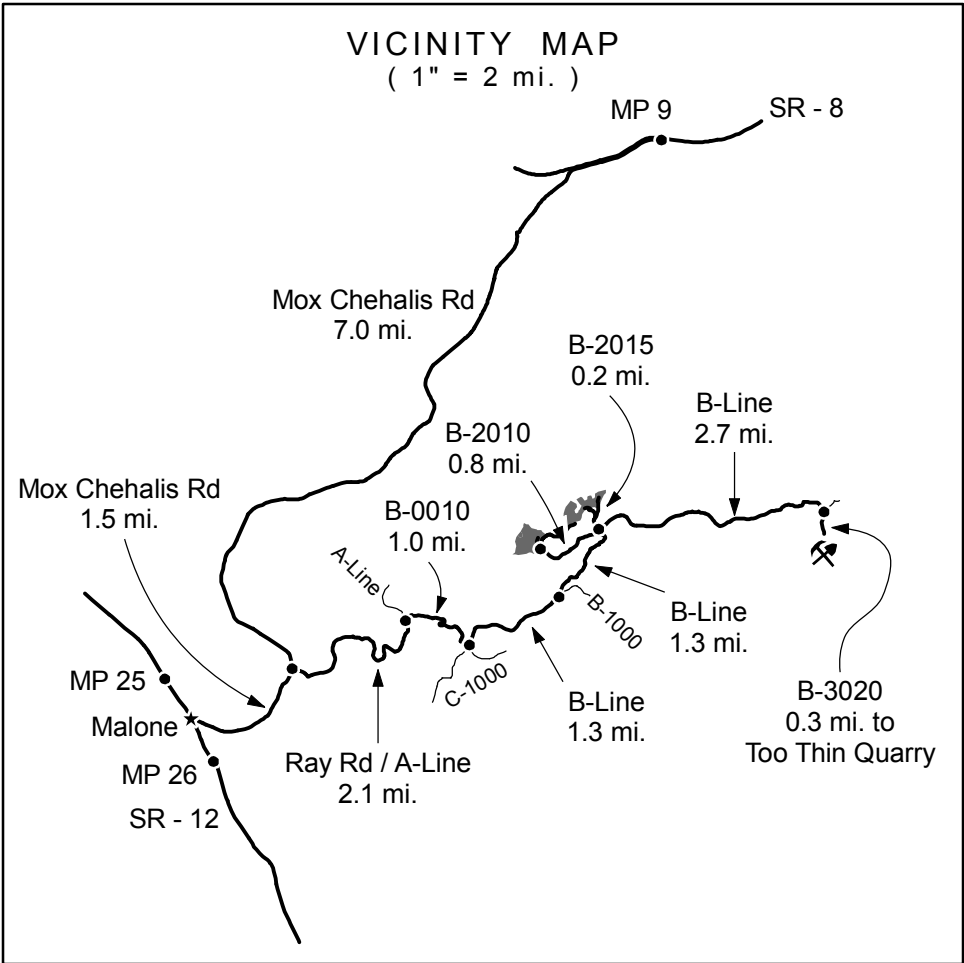
Streams

Water Type 1 - 5

Monumented Corner

Leave Trees

Existing Rock Pit



Drawn By: Shawn B.

Date: March 26, 2006

Scale: 1" = 1000'

Elevation: 300ft. - 1,000ft.

TIMBER NOTICE OF SALE

**SALE NAME:** DOG HAIR

**AGREEMENT NO:** 30-077623

**AUCTION:** September 26, 2006 starting at 10:00 a.m., **COUNTY:** King  
South Puget Sound Region Office, Enumclaw, WA

**SALE LOCATION:** Sale located approximately 12 miles northeast of Snoqualmie.

**PRODUCTS SOLD AND SALE AREA:** All timber bounded by white timber sale boundary tags, the ST-5400 Road and logged areas, except those trees bounded by yellow leave tree area boundary tags in Unit #1; all timber bounded by white timber sale boundary tags and the ST-5400 Road, except those trees marked with blue paint in Unit #2 on part(s) of Sections 17 all in Township 26 North, Range 8 East, W.M., containing 70 acres, more or less.

**ESTIMATED SALE VOLUMES AND QUALITY:**

Species	Avg DBH	Ring Count	Total MBF	MBF by Grade								UT
				1P	2P	3P	SM	1S	2S	3S	4S	
Douglas fir	19.9	9	2,529				350		1,584	504	91	
Hemlock	14.4	11	554						216	257	81	
Red cedar	16.2		136							116	20	
Sale Total			3,219									

**MINIMUM BID:** \$1,192,000.00 **BID METHOD:** Sealed Bids

**PERFORMANCE SECURITY:** \$100,000.00 **SALE TYPE:** Lump Sum

**EXPIRATION DATE:** October 31, 2008 **ALLOCATION:** Export Restricted

**BID DEPOSIT:** \$119,200.00 or Bid Bond. Said deposit shall constitute an opening bid at the appraised price.

**HARVEST METHOD:** Ground based, except rubber tired skidders, on slopes less than 35 percent and cable on slopes greater than 35 percent, unless authority to use other equipment is granted in writing by the State. If Purchaser elects to shovel log, shovel logging shall be in accordance with the attached Schedule A, which is part of this contract. Falling and Yarding will not be permitted from November 1 to May 31 unless authorized in writing by the Contract Administrator, nor at all on weekends or state recognized holidays.

**ROADS:** 5.00 stations of required construction. 45.38 stations of optional construction. 16.27 stations of road abandonment, if built. Purchaser maintenance on the 5400 and 5300 Roads, Spurs 100, 200, 300 and 400. Designated maintenance on all other roads used. Road construction will not be permitted from November 1 to May 31 unless authorized in writing by the Contract Administrator, nor at all on weekends or state recognized holidays. The hauling of forest products will not be permitted from November 1 to May 31 unless authorized in writing by the Contract Administrator, nor at all on weekends or state recognized holidays.

**ACREAGE DETERMINATION**

**CRUISE METHOD:** Acreage was determined by traversing boundaries with GPS. All units were cruised using a variable plot sampling with a BAF of 40.00 on a 300 x 165 foot grid.

**FEES:** \$42,652.00 is due on day of sale. \$9.00 per MBF is due upon removal. These are in addition to the bid price.

**SPECIAL REMARKS:** Purchaser is responsible to King County for road maintenance and/or repairs on the Stossel Creek County Road. Purchaser will need to apply for an HPA if tailholds will be strung across North Fork Creek. The potential for this activity has been mentioned in the FPA. Purchaser will need to apply for a Shoreline Exemption Permit from King County if any operation is within 200 feet of North Fork Creek. The DNR has applied for an HPA for the 5200 Road construction. Acquisition and installation of a modular steel bridge at a minimum length of 80 feet and a width of 16 feet between wheel guards according to the Road Plan.

TIMBER SALE MAP

SALE NAME: DOG HAIR

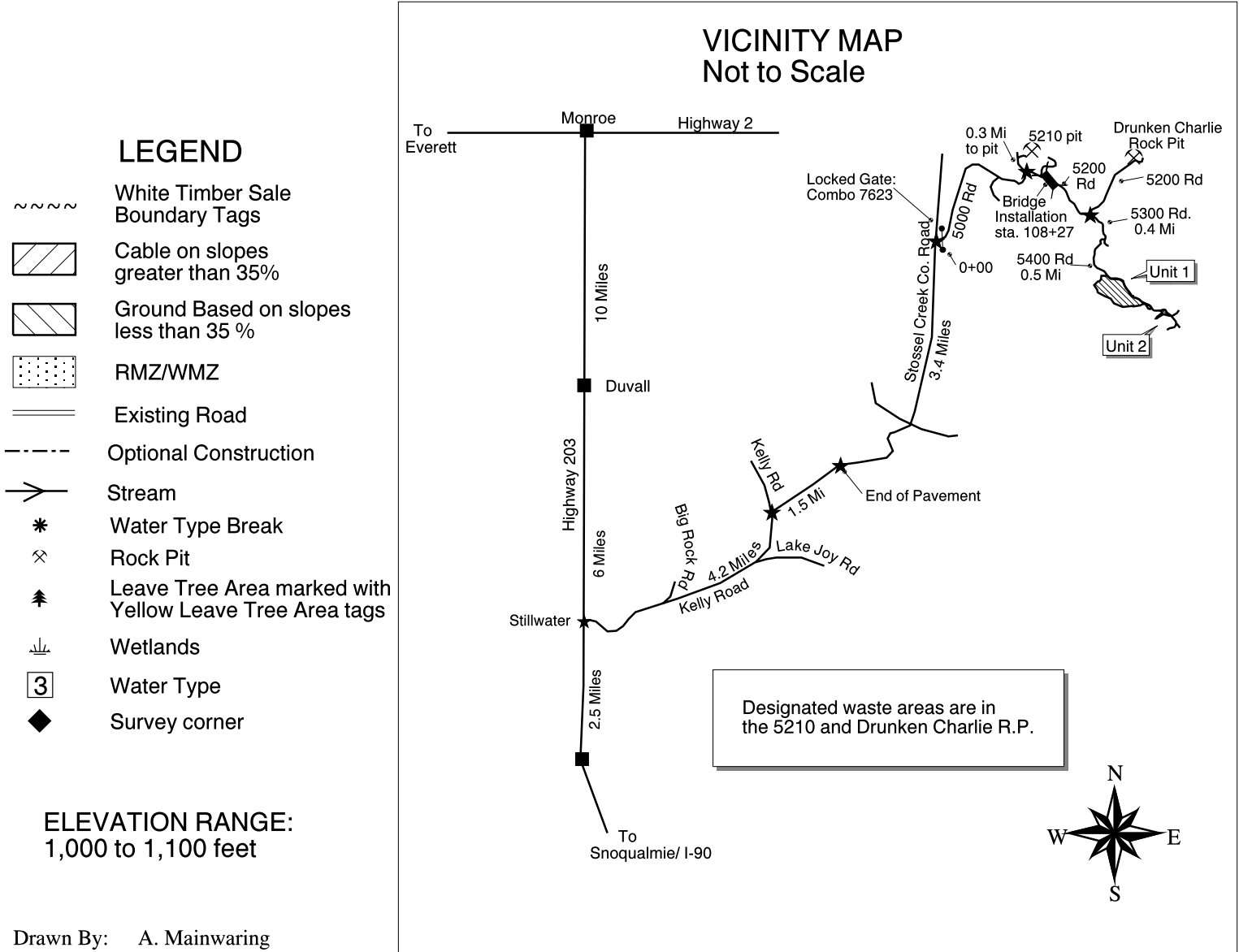
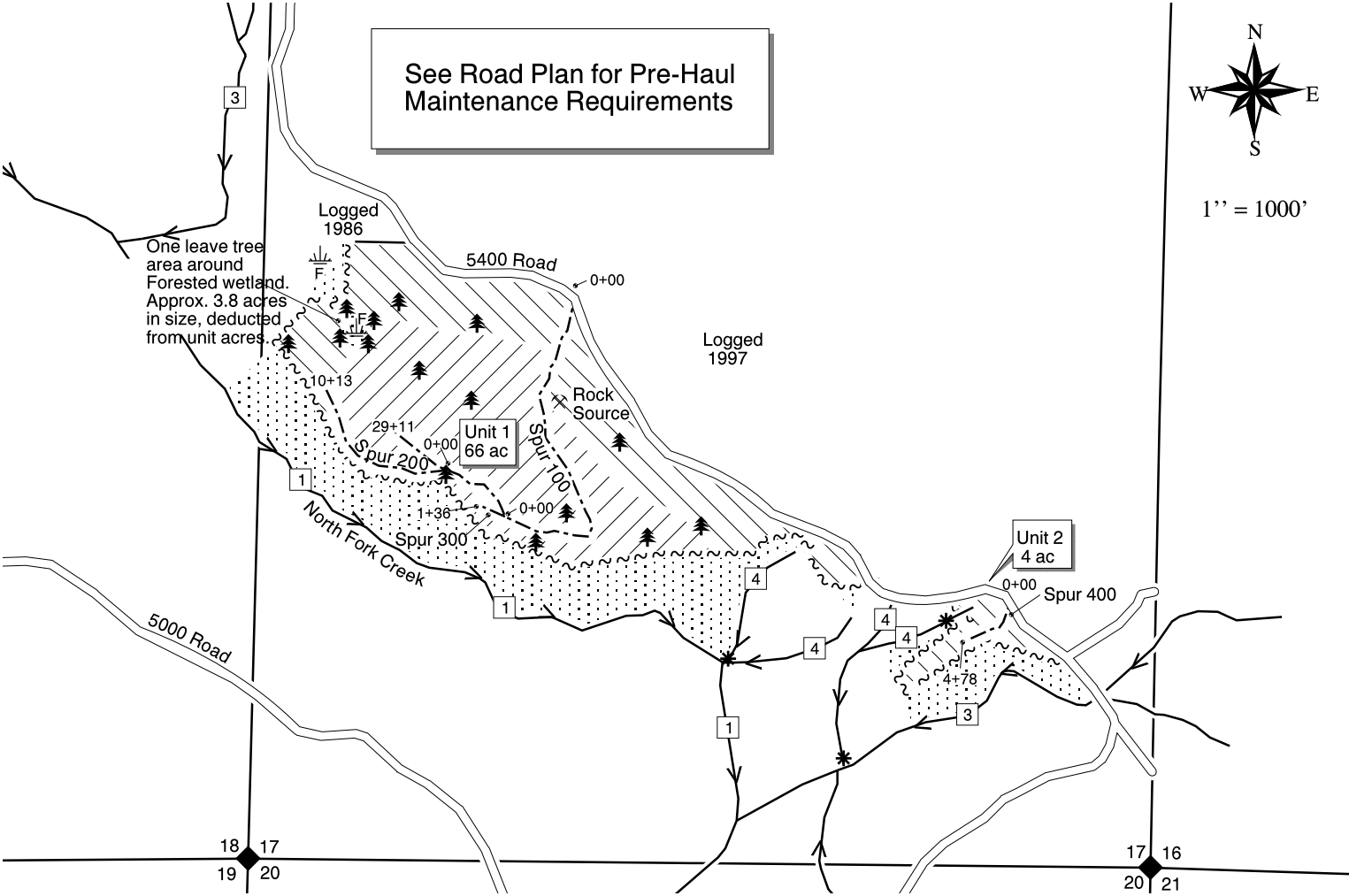
AGREEMENT NO: 30-077623

TRUST(S): FOREST BOARD TRANSFER

REGION: SOUTH PUGET SOUND

COUNTY(S): KING

TOWNSHIP 26 NORTH, RANGE 8 EAST, W.M.



LEGEND

- ~~~~~ White Timber Sale Boundary Tags
- Cable on slopes greater than 35%
- Ground Based on slopes less than 35 %
- RMZ/WMZ
- Existing Road
- Optional Construction
- Stream
- Water Type Break
- Rock Pit
- Leave Tree Area marked with Yellow Leave Tree Area tags
- Wetlands
- Water Type
- Survey corner

ELEVATION RANGE:  
1,000 to 1,100 feet

TIMBER NOTICE OF SALE

**SALE NAME:** *HAPPY CAMP HARDWOOD*

**AGREEMENT NO:** *30-077532*

**AUCTION:** September 28, 2006 starting at 10:00 a.m., **COUNTY:** Lewis  
Pacific Cascade Region Office, Castle Rock, WA

**SALE LOCATION:** Sale located approximately 14 miles southeast of Mossyrock, Washington

**PRODUCTS SOLD  
AND SALE AREA:** All timber, except trees marked with blue paint, leave tree clumps tagged out with leave tree area tags, down timber existing three years prior to day of sale, snags, and pre-existing stumps, bounded by the following: timber sale boundary tags and the W-543 road in Unit #1; timber sale boundary tags, property line, the W-500, W-559 and W-560 roads in Unit #2 on part(s) of Sections 17 and 20 all in Township 11 North, Range 3 East, W.M., containing 32 acres, more or less.

**ESTIMATED SALE VOLUMES AND QUALITY:**

Species	Avg DBH	Ring Count	Total MBF	MBF by Grade								UT
				1P	2P	3P	SM	1S	2S	3S	4S	
Red alder	12.7		498					25	100	108	265	
Douglas fir	18.2	6	272						159	93	20	
Hemlock	13.4	7	176						29	123	24	
Red cedar	12.6		65							37	28	
Cottonwood	23.5		18					3	13		2	
Spruce	9		1								1	
Sale Total			1,030									

**MINIMUM BID:** \$297,000.00 **BID METHOD:** Sealed Bids

**PERFORMANCE  
SECURITY:** \$59,400.00 **SALE TYPE:** Lump Sum

**EXPIRATION DATE:** October 31, 2007 **ALLOCATION:** Export Restricted

**BID DEPOSIT:** \$29,700.00 or Bid Bond. Said deposit shall constitute an opening bid at the appraised price.

**HARVEST METHOD:** Cable and Shovel. Shovel logging will not be permitted on slopes over 30% unless authorized in writing by the Contract Administrator. A detailed felling and yarding plan shall be required prior to any harvest activities and approved in writing by the Contract Administrator. Landing debris shall be piled as directed by the Contract Administrator. See Schedule L for further harvesting specifications. Shovel yarding will not be permitted from September 30 to May 1 unless authorized in writing by the Contract Administrator.

**ROADS:** 19.41 stations of required reconstruction. 4.10 stations of optional construction. 29.60 stations of pre-haul maintenance. 4.10 stations of road abandonment. Rock is available at no charge from the W-500 Road rock pit located in Sec 14, Twn 11N, Rng 03E, W.M. 100 cubic yards of surface rock for road maintenance is available at no charge from the stockpile in the W-500 Road rock pit. Settling ponds shall be constructed on the W543 road to resist erosion in accordance with the Culvert and Drainage Specification Details. Road construction will not be permitted from September 30 to May 1 unless authorized in writing by the Contract Administrator. Road abandonment is restricted to the same time period.

**ACREAGE DETERMINATION**

**CRUISE METHOD:** Acreage was determined using GPS. The sale area was cruised using a variable plot cruise method. Harvesting activities are estimated to be 60% shovel harvesting method and 40% cable harvesting methods.

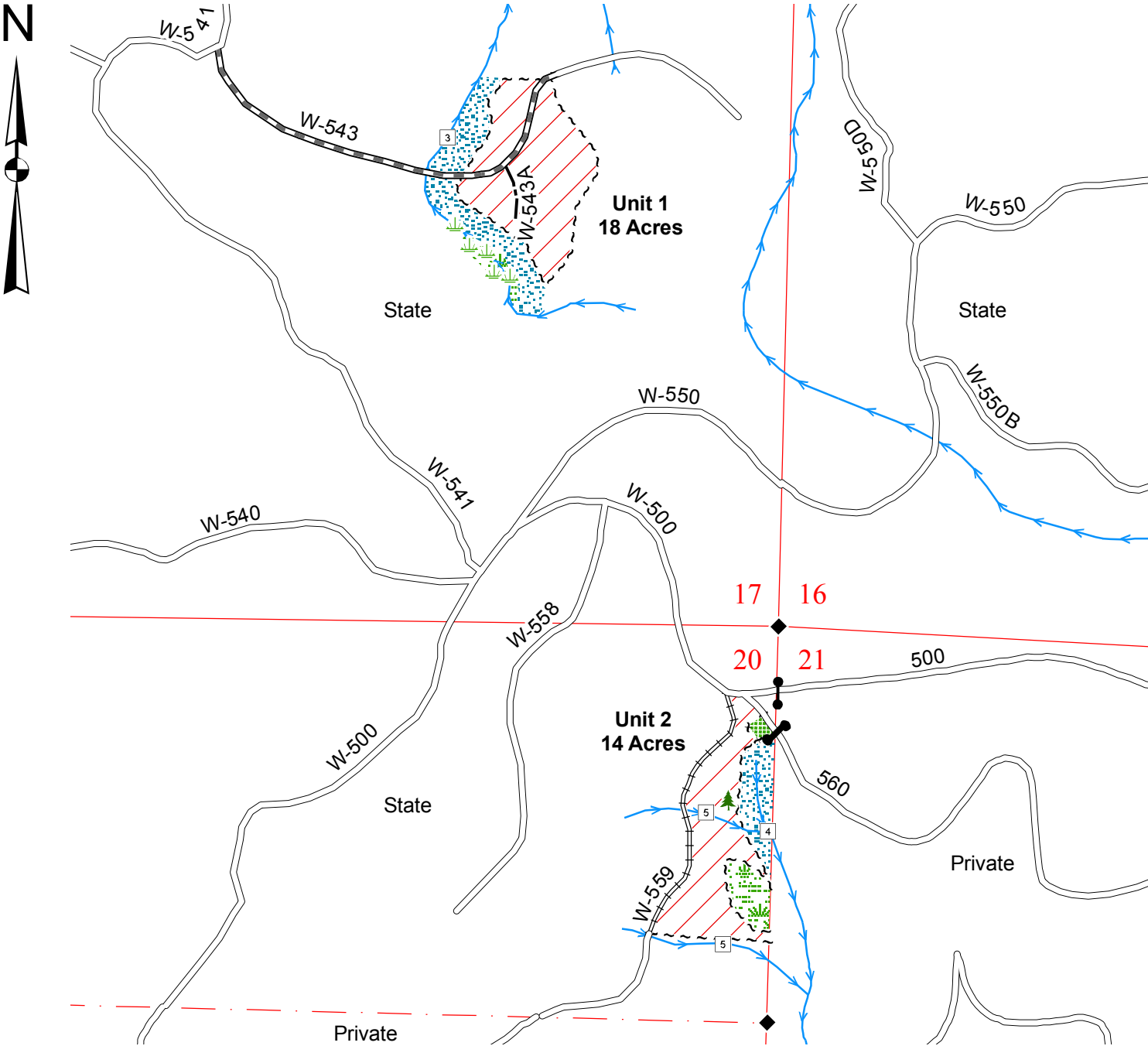
**FEES:** \$13,650.00 is due on day of sale. \$9.00 per MBF is due upon removal. These are in addition to the bid price.

**SPECIAL REMARKS:** Should the W-543A road not be surfaced with optional rock ballast, the road will be blocked with 20 cubic yards of riprap rock between September 30 and May 1 to prevent vehicle traffic. Gate keys may be obtained from the region office. See vicinity map for gate locations.

TIMBER SALE MAP

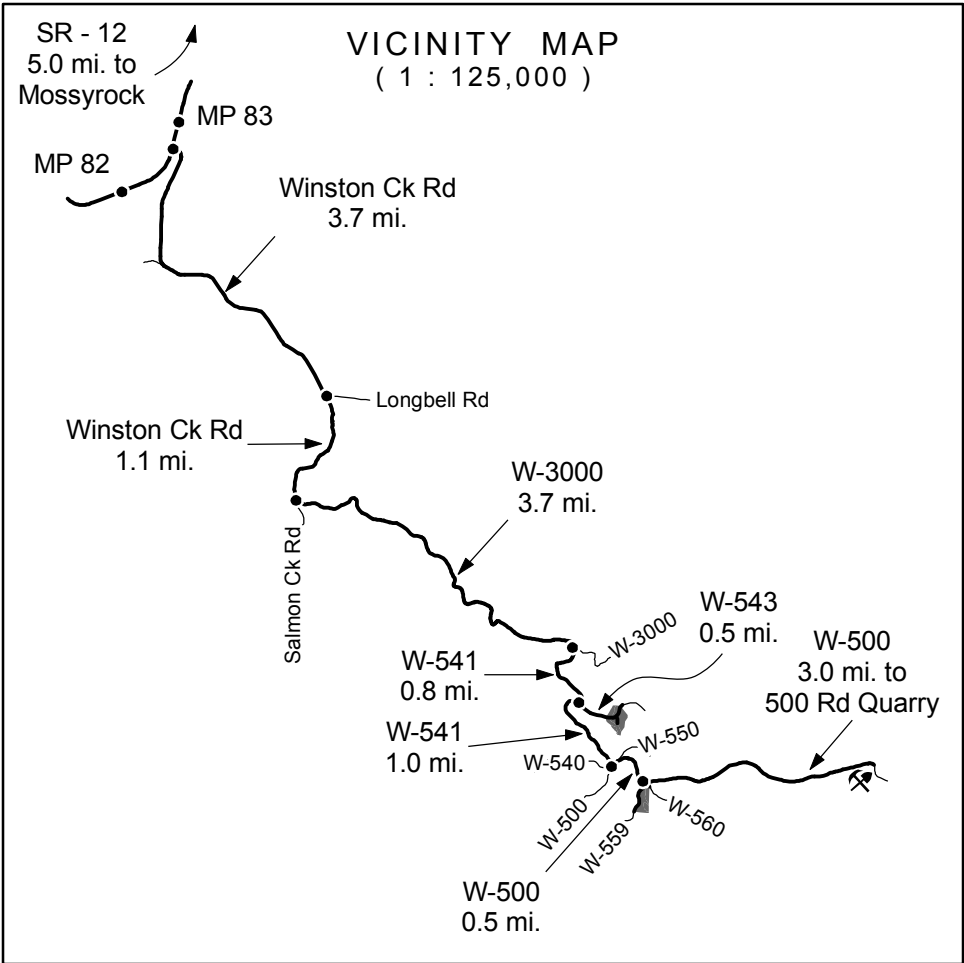
SALE NAME: HAPPY CAMP HWD  
AGREEMENT NO: 30-077532  
TRUST(S): State Forest Board Transfer (01) & Capitol Grant (07)  
Township 11 North, Range 03 East, W.M.

REGION: Pacific Cascade  
COUNTY(S): Lewis



**Legend**

- Sale Area
- Leave Tree Area
- RMZ
- WMZ
- Sale Boundary Tags (White)
- Leave Tree Tags (Yellow)
- Existing Roads
- Pre-haul Maintenance
- Required Reconstruction
- Optional Construction
- Streams
- Water Type 1 - 5
- Monumented Corner
- Leave Trees
- Existing Rock Pit
- Gate (786 Master)



Drawn By: Shawn B.  
Date: May 26, 2006  
Scale: 1" = 1000'  
Elevation: 1,640ft. - 1,875ft.



TIMBER NOTICE OF SALE

**SALE NAME:** POLE TENTIAL

**AGREEMENT NO:** 30-078675

**AUCTION:** September 28, 2006 starting at 10:00 a.m., **COUNTY:** Lewis  
Pacific Cascade Region Office, Castle Rock, WA

**SALE LOCATION:** Sale located approximately 10 miles west of Chehalis, WA

**PRODUCTS SOLD  
AND SALE AREA:** All timber, except snags, trees tagged out with leave tree area tags, and leave trees marked with yellow paint, bounded by timber sale boundary tags and the D-7000, D-7200, and D-7210 roads on part(s) of Sections 25 and 36 all in Township 14 North, Range 4 West, W.M., containing 71 acres, more or less.

**ESTIMATED SALE VOLUMES AND QUALITY:**

Species	Avg DBH	Ring Count	Total MBF	MBF by Grade								UT
				1P	2P	3P	SM	1S	2S	3S	4S	
Douglas fir	19.6	7	2,984				90		1,874	910	110	
Red alder	12.7		47							18	29	
Grand fir	28.2		27						22	4	1	
Red cedar	8		6								6	
Hemlock	9	7	2								2	
Sale Total			3,066									

**MINIMUM BID:** \$1,424,000.00 **BID METHOD:** Sealed Bids

**PERFORMANCE  
SECURITY:** \$100,000.00 **SALE TYPE:** Lump Sum

**EXPIRATION DATE:** September 30, 2008 **ALLOCATION:** Export Restricted

**BID DEPOSIT:** \$142,400.00 or Bid Bond. Said deposit shall constitute an opening bid at the appraised price.

**HARVEST METHOD:** Shovel harvesting equipment, with a tracked skidder being allowed to remove pole timber only. A detailed felling and yarding plan shall be required prior to any harvest activities and approved in writing by the Contract Administrator. Within shovel logging areas, the shovel operator shall break up concentrations of logging debris greater than 10 feet by 10 feet to allow exposure of natural forest soils to ensure proper reforestation.

**ROADS:** 20.45 stations of required construction. 12.80 stations of required reconstruction. 2.75 stations of optional construction. 5.59 stations of required pre-haul maintenance. 3.15 stations of optional pre-haul maintenance. 35.50 stations of road abandonment. Rock is available at no charge from the State Washtub Quarry located in Sec. 34, T15N, R05W, W.M. Purchaser shall stockpile an additional 4,000 cubic yards of 2 inch minus rock in accordance with the road plan. Operation of construction equipment will not be permitted from 8:00 PM to 6:00 AM, Monday through Friday or on weekends or State recognized holidays unless authority to do so is granted in writing by the Contract Administrator. The use of unmuffled "jake brakes" will not be permitted on site. Road construction will not be permitted from September 30 to May 1 unless authorized in writing by the Contract Administrator. The hauling of forest products will not be permitted from September 30 to May 1 unless authorized in writing by the Contract Administrator.

**ACREAGE DETERMINATION**

**CRUISE METHOD:** The sale acres were determined by GPS. The sale area was cruised using a variable plot cruise method. Harvesting activities are estimated to be approximately 100% shovel.

**FEES:** \$40,620.00 is due on day of sale. \$9.00 per MBF is due upon removal. These are in addition to the bid price.

**SPECIAL REMARKS:** See vicinity map for gate location. Gate key may be obtained from the Pacific Cascade Region office. This sale includes approximately 171 MBF of 2 and 3 saw mini peelers. This sale also contains some pole quality timber.

TIMBER SALE MAP

SALE NAME: POLE-TENTIAL

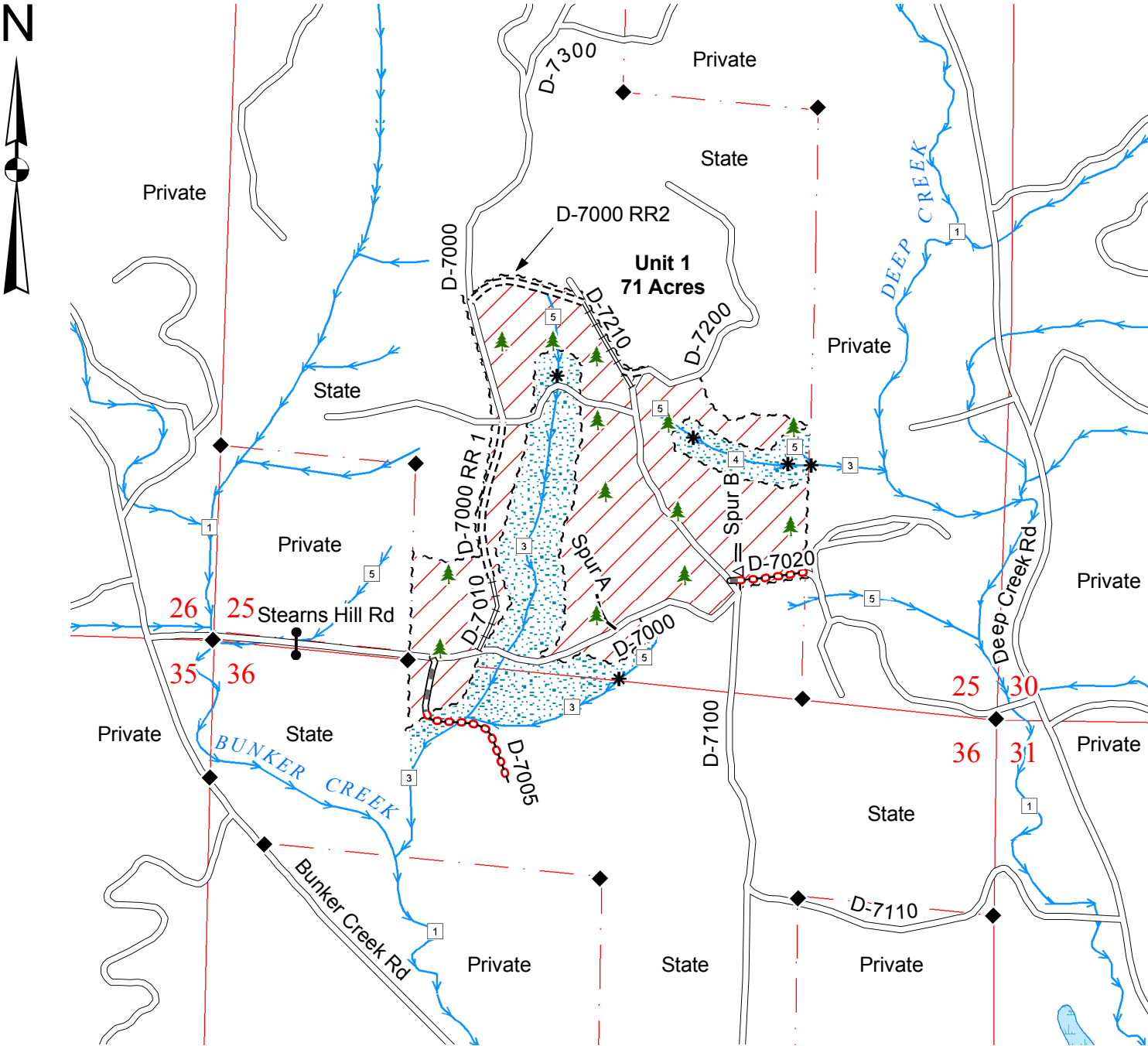
AGREEMENT NO: 30-078675

TRUST(S): State Forest Board Transfer (01) & Common School (03)

REGION: Pacific Cascade

COUNTY(S): Lewis

Township 14 North, Range 04 West, W.M.



Legend

Sale Area

RMZ

Sale Boundary Tags (White)

Existing Roads

Pre-haul Maintenance

Optional Pre-haul Maint.

Required Construction

Required Reconstruction

Optional Construction

Required Abandonment

Streams

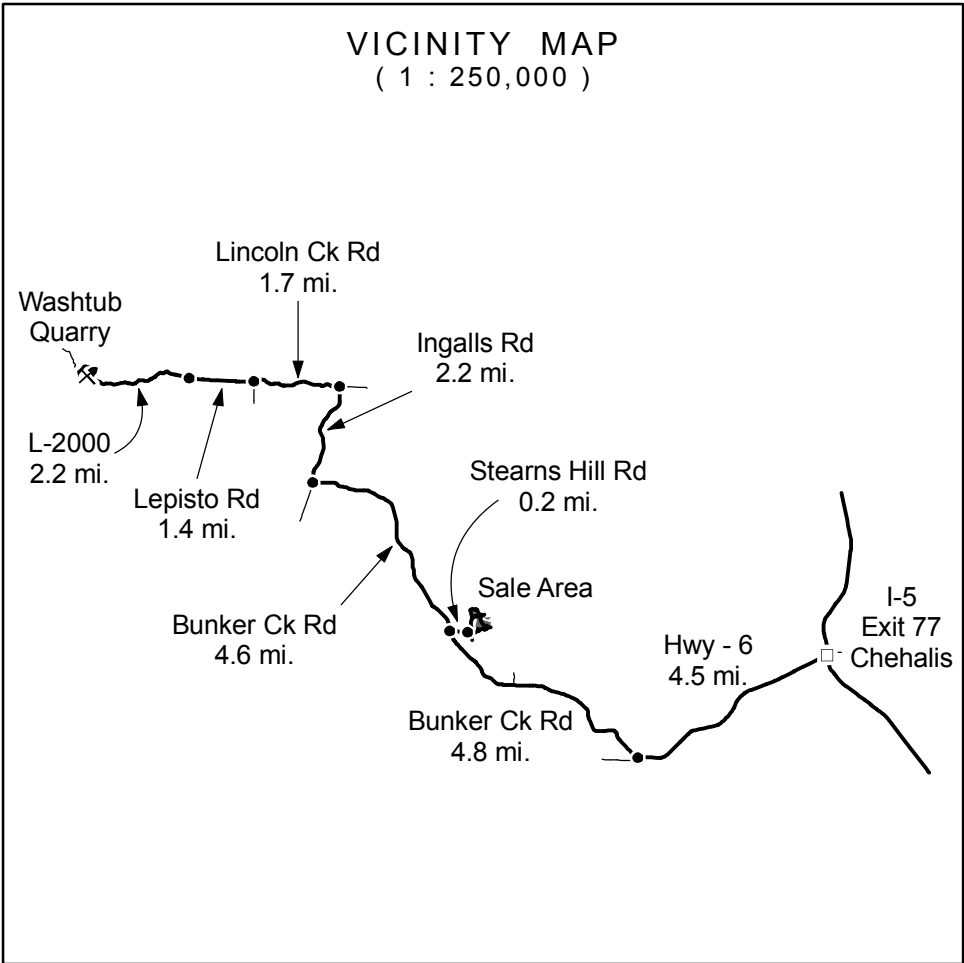
Water Type 1 - 5

Monumented Corner

Leave Tree Areas

Existing Rock Pit

Gate (786 Master)



Drawn By: Shawn B.

Date: May 8, 2006

Scale: 1" = 1000'

Elevation: 300ft. - 600ft.

TIMBER NOTICE OF SALE

**SALE NAME:** *NOMAD*

**AGREEMENT NO:** 30-077659

**AUCTION:** September 26, 2006 starting at 10:00 a.m., **COUNTY:** Mason  
South Puget Sound Region Office, Enumclaw, WA

**SALE LOCATION:** Sale located approximately 11 miles north of Hoodspport

**PRODUCTS SOLD AND SALE AREA:** All timber bounded by white Timber Sale Boundary tags, the 1700 Road, except those trees marked with blue paint and yellow Leave Tree area tags in Unit #1; all timber bounded by white Timber Sale Boundary tags, the 1000 Road and BPA Powerlines, except those trees marked with blue paint in Unit #2; all timber bounded by white Timber Sale Boundary tags, the 2100 Road and BPA Powerlines, except those trees marked with blue paint in Unit #3 and all timber bounded by orange Right of Way tags, on part(s) of Sections 13, 23, 24, 25 and 26 all in Township 23 North, Range 4 West, Sections 18 all in Township 23 North, Range 3 West, W.M., containing 205 acres, more or less.

**ESTIMATED SALE VOLUMES AND QUALITY:**

Species	Avg DBH	Ring Count	Total MBF	MBF by Grade								UT
				1P	2P	3P	SM	1S	2S	3S	4S	
Douglas fir	15	10	4,887				389		2,094	1,893	511	
Hemlock	12.4		1,054						263	515	276	
Red cedar	11.6		115							70	45	
Red alder	11.5		89						4	28	57	
Maple	14.6		71						2	19	50	
Sale Total			6,216									

**MINIMUM BID:** \$2,191,000.00 **BID METHOD:** Sealed Bids

**PERFORMANCE SECURITY:** \$100,000.00 **SALE TYPE:** Lump Sum

**EXPIRATION DATE:** October 31, 2007 **ALLOCATION:** Export Restricted

**BID DEPOSIT:** \$219,100.00 or Bid Bond. Said deposit shall constitute an opening bid at the appraised price.

**HARVEST METHOD:** Ground based equipment on slopes less than 35 percent and cable equipment with lateral yarding capabilities on slopes greater than 35 percent. If Purchaser elects to shovel log, shovel logging shall be in accordance with the attached Schedule A, which is part of this contract. Ground based yarding may be restricted during wet weather conditions if rutting exceeds 6 inches.

**ROADS:** 86.98 stations of required construction. 30.36 stations of optional construction. 23.01 stations of required pre-haul maintenance. 47.98 stations of required deactivation. 30.36 stations of abandonment, if optional spurs are constructed. Purchaser maintenance on the 1000 (from the 1200 Road intersection to Unit #2), 1070, 1700, 1710, 1720, 2100 and 2420 Roads, Spurs 1 and 2. Designated maintenance on the 24 USFS road and the 1000 Road (up to the 1200 Road intersection). Road construction will not be permitted from October 1 to April 30 unless authorized in writing by the Contract Administrator, nor on weekends or state recognized holidays. Timber, equipment and rock hauling on the 24 Road, for Unit #3 only, is not allowed on weekends nor on holidays from Memorial Day to Labor Day. The hauling of forest products will not be permitted from October 1 to April 30 unless authorized in writing by the Contract Administrator.

**ACREAGE DETERMINATION**

**CRUISE METHOD:** Acreage was determined by traversing the sale boundary with GPS. Units were cruised using a variable plot sample with a BAF of 40 on a 400 x 300 foot grid. Right of Way was cruised using a variable plot sample with a BAF of 40 with plot spacing every 721 feet.

**FEES:** \$82,362.00 is due on day of sale. \$9.00 per MBF is due upon removal. These are in addition to the bid price.

**SPECIAL REMARKS:** Required endhaul on the 1720 Road from station 15+40 to station 42+43.

TIMBER SALE MAP

SALE NAME: NOMAD

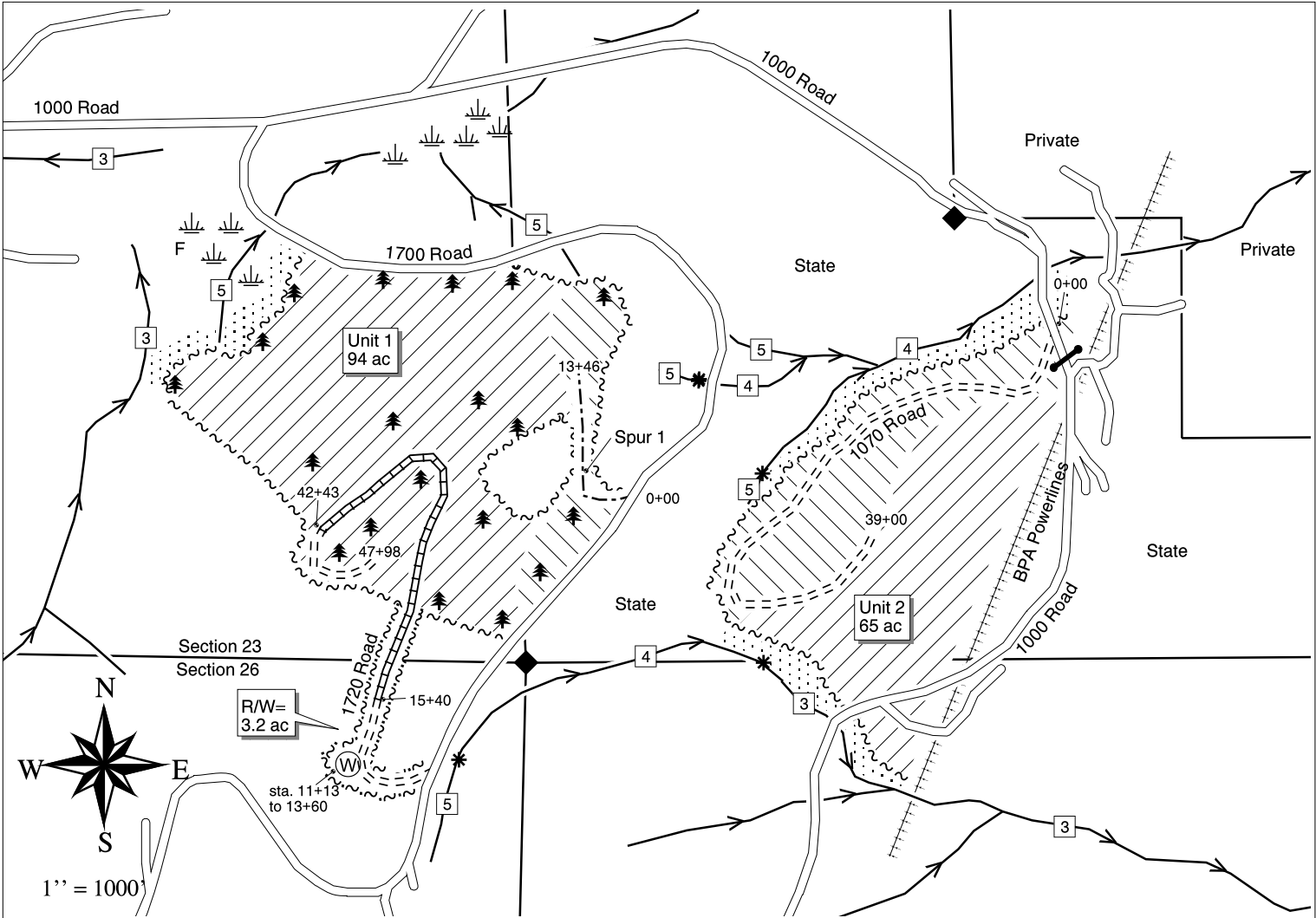
AGREEMENT NO: 30-077659

TRUST(S): COMMON SCHOOL, C.E.P. & R.I.

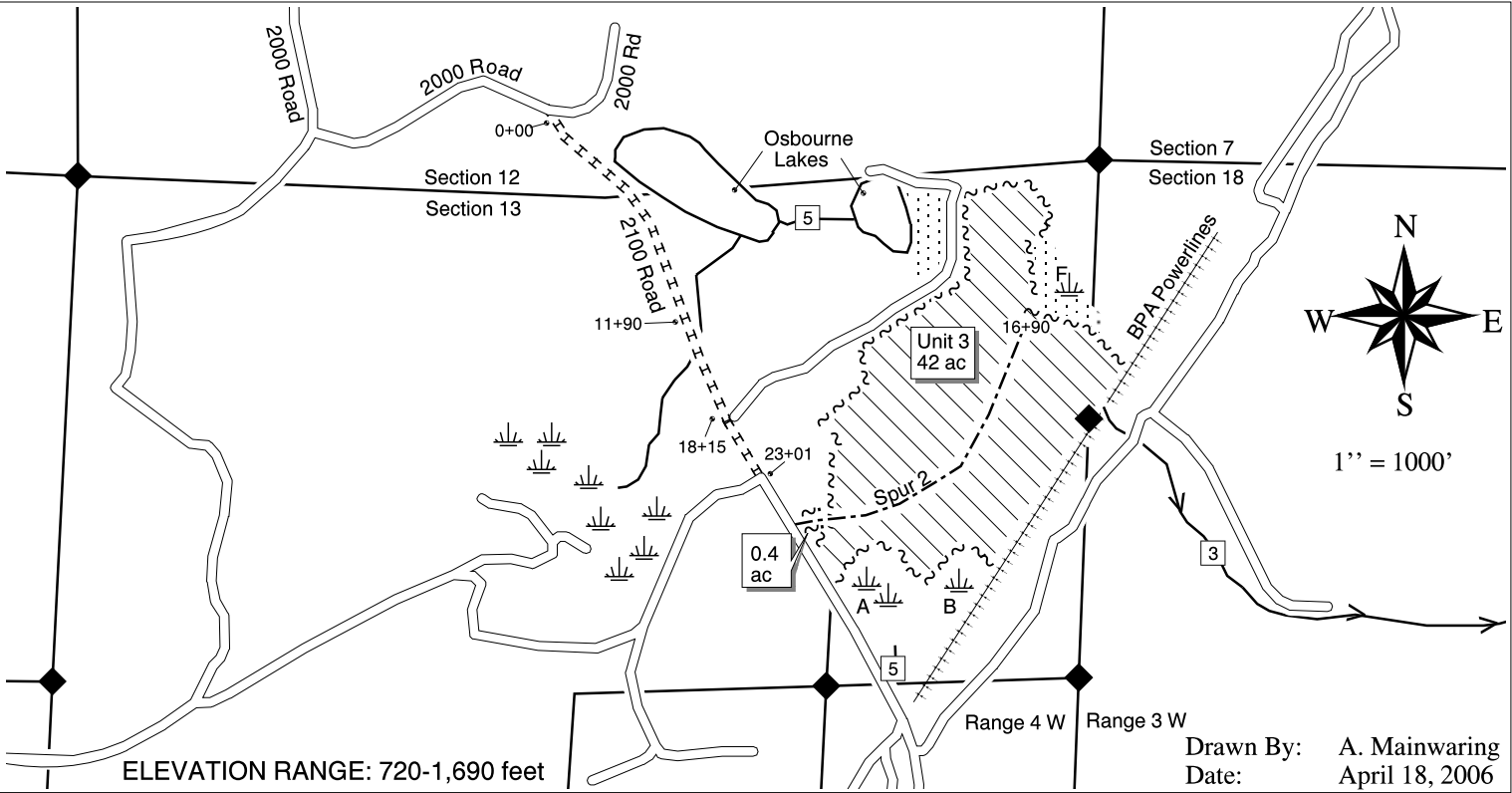
REGION: SOUTH PUGET SOUND

COUNTY(S): MASON

MAP 1 OF 2  
TOWNSHIP 23 NORTH, RANGE 3 & 4 WEST, W.M.  
UNITS 1& 2



UNIT 3

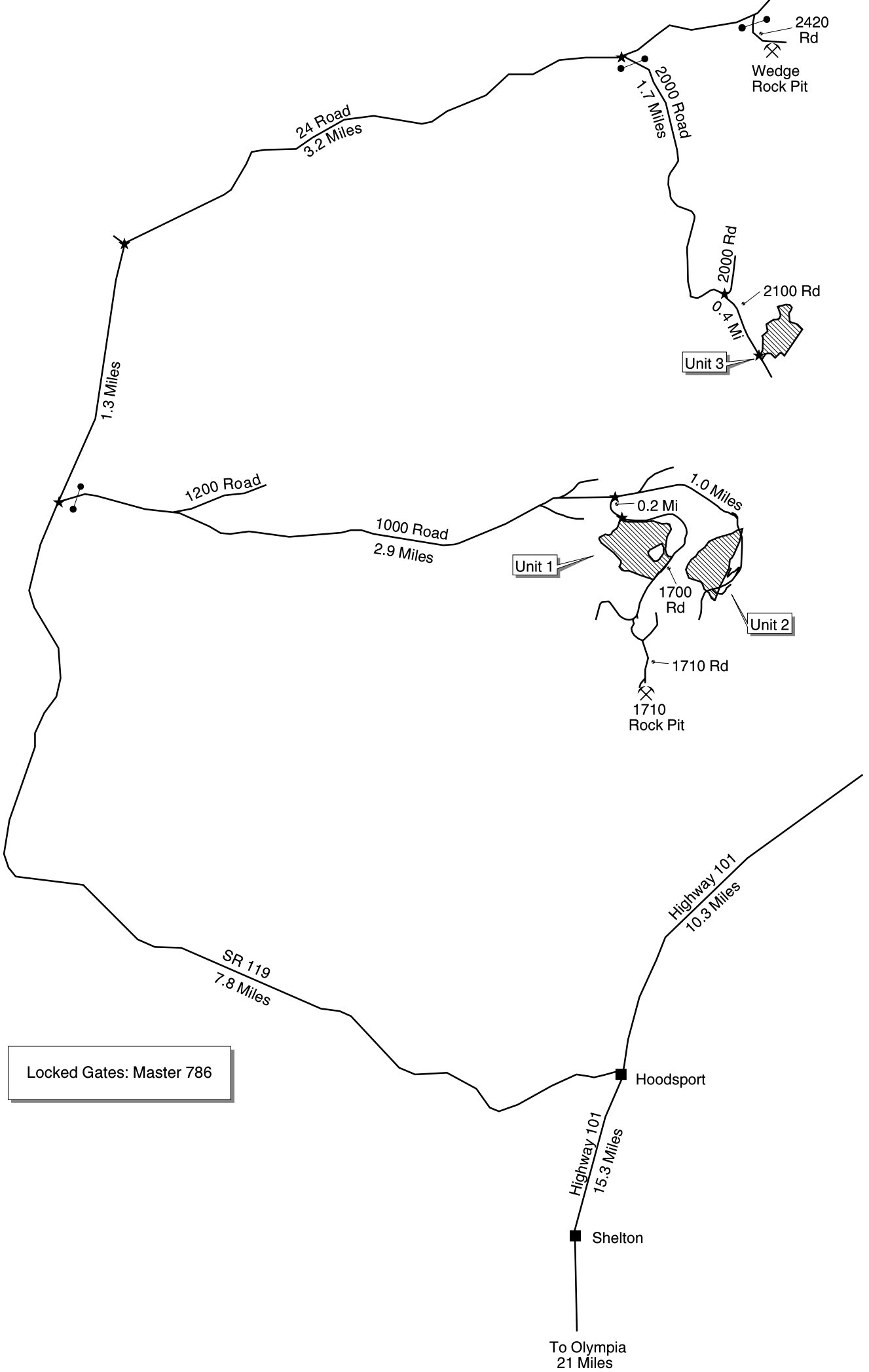


~~~~~	White Timber Sale Boundary Tags	=====	Existing Road		Wetlands
~~~~~	Orange Right of Way Boundary Tags	=====	Required Construction		Waste Area
	Leave Trees marked with Yellow Leave Tree Area Tags	-----	Optional Construction	*	Water Type Break
	Cable	=====	Required Construction with Endhaul		Water Type
	Ground Based	=====	Required Pre-haul Maintenance		Stream
	RMZ/WMZ	=====	BPA Powerlines		Survey Corner
					Locked Gate: Master 786

TIMBER SALE MAP

SALE NAME:	NOMAD	REGION:	SOUTH PUGET SOUND
AGREEMENT NO:	30-077659	COUNTY(S):	MASON
TRUST(S):	COMMON SCHOOL, C.E.P. & R.I.		

MAP 2 OF 2  
VICINITY MAP  
Not to Scale





TIMBER NOTICE OF SALE

**SALE NAME:** *DESIRE ALDER*

**AGREEMENT NO:** *30-077431*

**AUCTION:** September 28, 2006 starting at 10:00 a.m., **COUNTY:** Pacific  
Pacific Cascade Region Office, Castle Rock, WA

**SALE LOCATION:** Sale located approximately 41 miles northwest of Longview, WA

**PRODUCTS SOLD AND SALE AREA:** All timber, except trees tagged out with leave tree area tags, and trees marked with blue paint, bounded by the following: timber sale boundary tags and property line in Units #1and #2, timber sale boundary tags and the G-7030 road in Unit #3; all timber bounded by right-of-way boundary tags on part(s) of Sections 36 all in Township 11 North, Range 7 West, W.M., containing 83 acres, more or less.

**ESTIMATED SALE VOLUMES AND QUALITY:**

Species	Avg DBH	Ring Count	Total MBF	MBF by Grade								UT
				1P	2P	3P	SM	1S	2S	3S	4S	
Red alder	11.7		850						30	300	520	
Hemlock	14.6	7	759						212	454	93	
Spruce	15.8		221						116	83	22	
Douglas fir	17	7	57						32	21	4	
Sale Total			1,887									

**MINIMUM BID:** \$404,000.00 **BID METHOD:** Sealed Bids

**PERFORMANCE SECURITY:** \$80,800.00 **SALE TYPE:** Lump Sum

**EXPIRATION DATE:** October 31, 2008 **ALLOCATION:** Export Restricted

**BID DEPOSIT:** \$40,400.00 or Bid Bond. Said deposit shall constitute an opening bid at the appraised price.

**HARVEST METHOD:** Cable, shovel and tracked skidder. Ground based harvesting is restricted to slopes of 35% and less. Ground based operations may be suspended during periods of wet weather when rutting is apparent.

**ROADS:** 11.70 stations of optional construction. Rock for construction under this contract may be obtained from any commercial source as approved in writing by the Contract Administrator. Road construction will not be permitted from September 30 to May 1 unless authorized in writing by the Contract Administrator.

**ACREAGE DETERMINATION**

**CRUISE METHOD:** The sale acres were determined by GPS. The sale area was cruised using a variable plot cruise method. Harvesting activities are estimated to be approximately 95% ground based 5% cable harvesting.

**FEES:** \$25,000.00 is due on day of sale. \$9.00 per MBF is due upon removal. These are in addition to the bid price.

**SPECIAL REMARKS:** 450 well-distributed, plantable spots per acre will be created in Units #1, #2, and #3. This shall include the uprooting of vine maple clumps and the felling or uprooting of all non-merchantable hardwoods that are greater than 2 inches in diameter.

TIMBER SALE MAP

SALE NAME: DESIRE ALDER

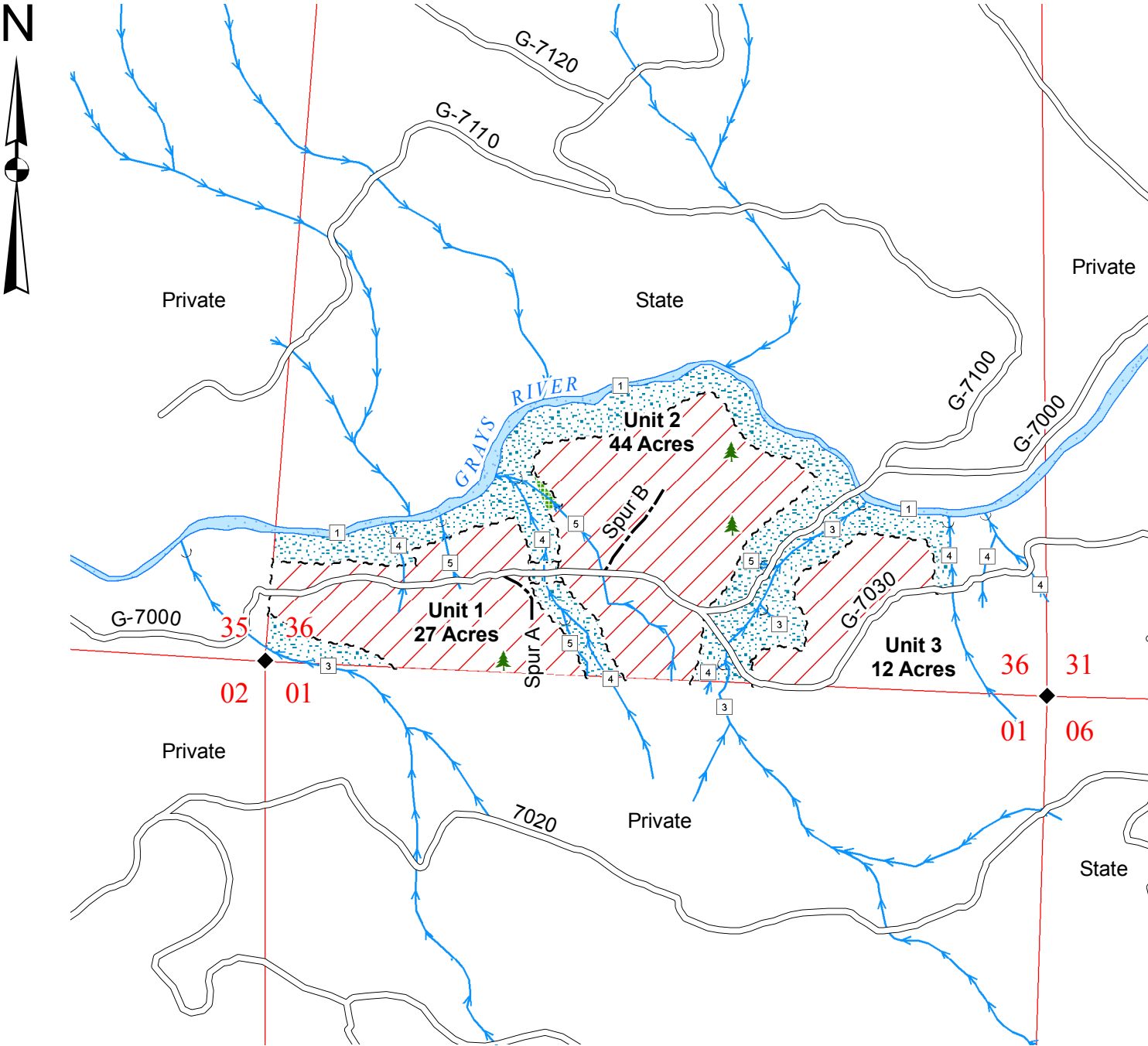
AGREEMENT NO: 30-077431

TRUST(S): Common School (03)

REGION: Pacific Cascade

COUNTY(S): Pacific

Township 11 North, Range 07 West, W.M.



Legend

Sale Area

Leave Tree Area

RMZ

Sale Boundary Tags (White)

Right of Way Boundary Tags (Orange)

Existing Roads

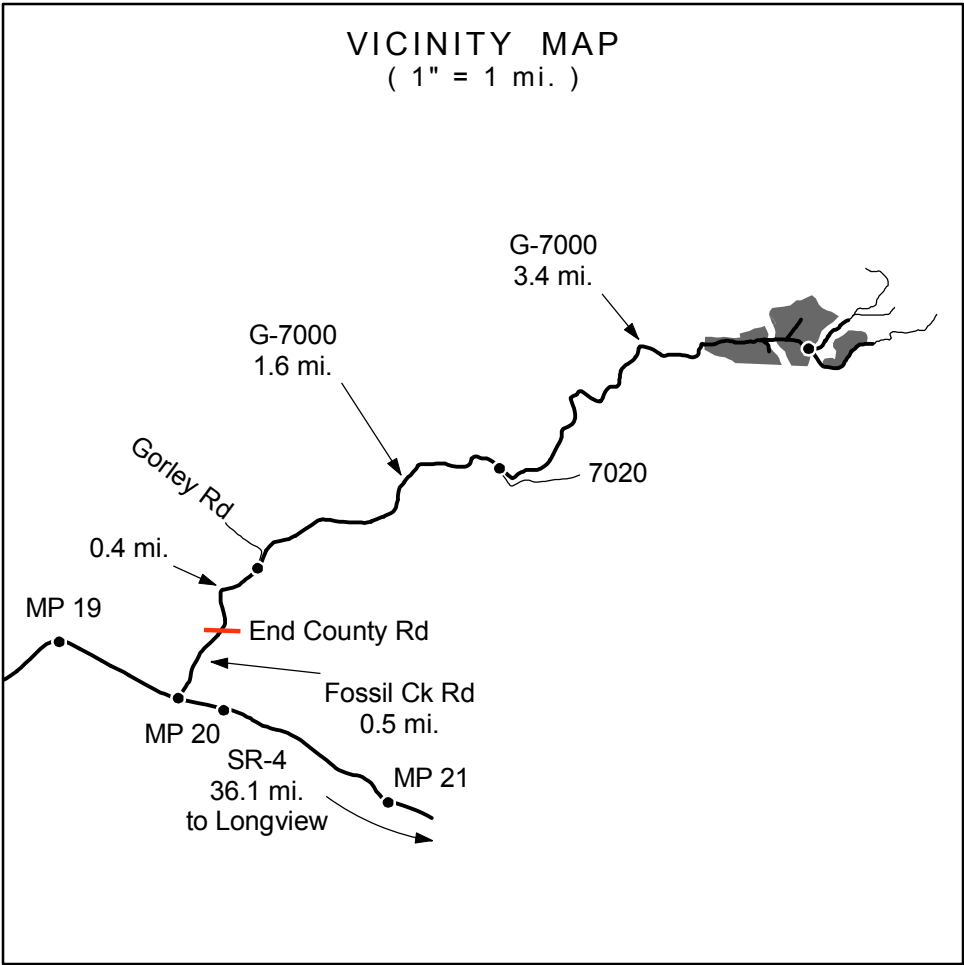
Optional Construction

Streams

Water Type 1 - 5

Monumented Corner

Leave Trees



Drawn By: Shawn B.

Date: May 26, 2006

Scale: 1" = 1000'

Elevation: 360ft. - 680ft.



TIMBER NOTICE OF SALE

SALE NAME: Honey Potts Log Sorts      AGREEMENT NO: 30-079845 - 30-079856

AUCTION: September 25, 2006, starting at 10:00 a.m.,      COUNTY: Skagit  
Northwest Region Office, Sedro Woolley , WA.

SALE LOCATION: Sale located approximately 10 miles east of Sedro Woolley.

PRODUCTS SOLD  
AND SALE AREA: All products sold on a delivered log sort basis. All logs from timber, except trees marked with blue paint at DBH and root collar and trees tagged out with yellow leave tree tags, meeting the specifications described below, bounded by: white timber sale boundary tags, property lines and the DL-ML Road, in Unit #1; white timber sale boundary tags, property lines, adjacent plantations, and the DL-36 Road, in Unit #2; and orange right of way tags in the right of way; on part(s) of Section(s) 3, 4, 9, Township 34 North, Range 6, W.M., Skagit County , containing 91 acres, more or less.

MINIMUM BID AND ESTIMATED LOG SORT VOLUMES:

Agreement #	Sort #	Species and Sort Specifications	Average Log Length	Estimated Volume		Minimum Bid Delivered Prices		Total Appraised Value	Bid Deposit
				mbf	Tons	\$/mbf	\$/Ton		
30-078945	1	DF Poles 35' +		41	246	\$824.20	-----	\$33,792.20	\$3,379.22
30-078946	2	DF 12" + dib, 7 + rings/inch, well scattered knots up to 1 ½", 2 <sup>nd</sup> cuts possible		531	2,708	\$630.14	-----	\$334,604.34	\$33,460.43
30-078947	3	DF/ WW 27" + large end. Saw		325	1,680	\$509.56	-----	\$165,606.50	\$16,560.65
30-078948	4	DF 8" dib to 26" large end. Saw		841	5,551	\$507.63	-----	\$426,916.83	\$42,691.68
30-078949	5	DF 5" dib to 7" dib. Saw		83	647	-----	\$63.68	\$41,200.96	\$4,120.10
30-078950	6	WW 8" dib to 26" large end. Saw		798	4,788	\$372.74	-----	\$297,446.52	\$29,744.65
30-078951	7	WW 5" dib to 7" dib. Saw		93	721	-----	\$37.82	\$27,268.22	\$2,726.82
30-078952	8	RC Poles 35' +		149	864	\$919.70	-----	\$137,035.30	\$13,703.53
30-078953	9	RC 5" + dib. Saw		510	3,009	\$698.14	-----	\$356,051.40	\$35,605.14
30-078954	10	RA 8" + dib. Saw		261	2,176	\$595.41	-----	\$155,402.01	\$15,540.20
30-078955	11	Conifer 4" + dib Utility		20	180	-----	\$19.76	\$3,556.80	\$355.68
30-078956	12	RA, CW, MA 4" + dib Utility		82	672	-----	\$19.76	\$13,278.72	\$1,327.87
Totals				3,734	23,242	\$1,992,159.80			

BID METHOD: Sealed Bids      UNIT OF MEASURE: MBF scale/Tonnage scale

EXPIRATION DATE: July 31, 2007      ALLOCATION: Export Restricted

PAYMENT  
SECURITY: To be determined by the State as described in Clause P-041 of the Purchaser's Contract.

BIDDING  
PROCEDURES: A separate sealed bid and envelope must be submitted for each log sort. Prospective Purchasers may bid on any or all log sorts. On the day of sale the Purchaser must bring their bid deposit up to 10% of their total bid price. Complete bidding procedures and auction information may be obtained from the Northwest Region Office in Sedro Woolley, WA. Phone number 360-856-3500.

## TIMBER NOTICE OF SALE

---

### HARVEST AND

**DELIVERY COSTS:** Purchaser must pay the forest excise taxes associated with the log sorts delivered to them. The tax rate for this sale is 4.2%. Taxable Stumpage = Total Delivered Value – (Harvest Cost + Haul Cost + ARRF). Use the following rates for estimating taxable stumpage: Harvest Cost = tons([\$/ton] , [\$/ton] for poles, \$6.00 for utility). Haul Cost = (tons)(\$2.63 or \$3.63 poles) + tons(\$0.16x C miles) + tons(\$0.14 x A miles)). ARRF = \$22.25/mbf.

**SPECIAL REMARKS:** The successful Purchaser(s) will be required to purchase logs from the sale area upon delivery to their location specified in the bid submitted. Logs will be delivered to the Purchaser's delivery location by the State's contract harvester. Purchaser is responsible for weighing and scaling costs. All mbf and tonnage loads will be weighed and all mbf loads will be scaled at State approved scaling locations. The State reserves the right to determine where logs are authorized to be scaled and weighed.

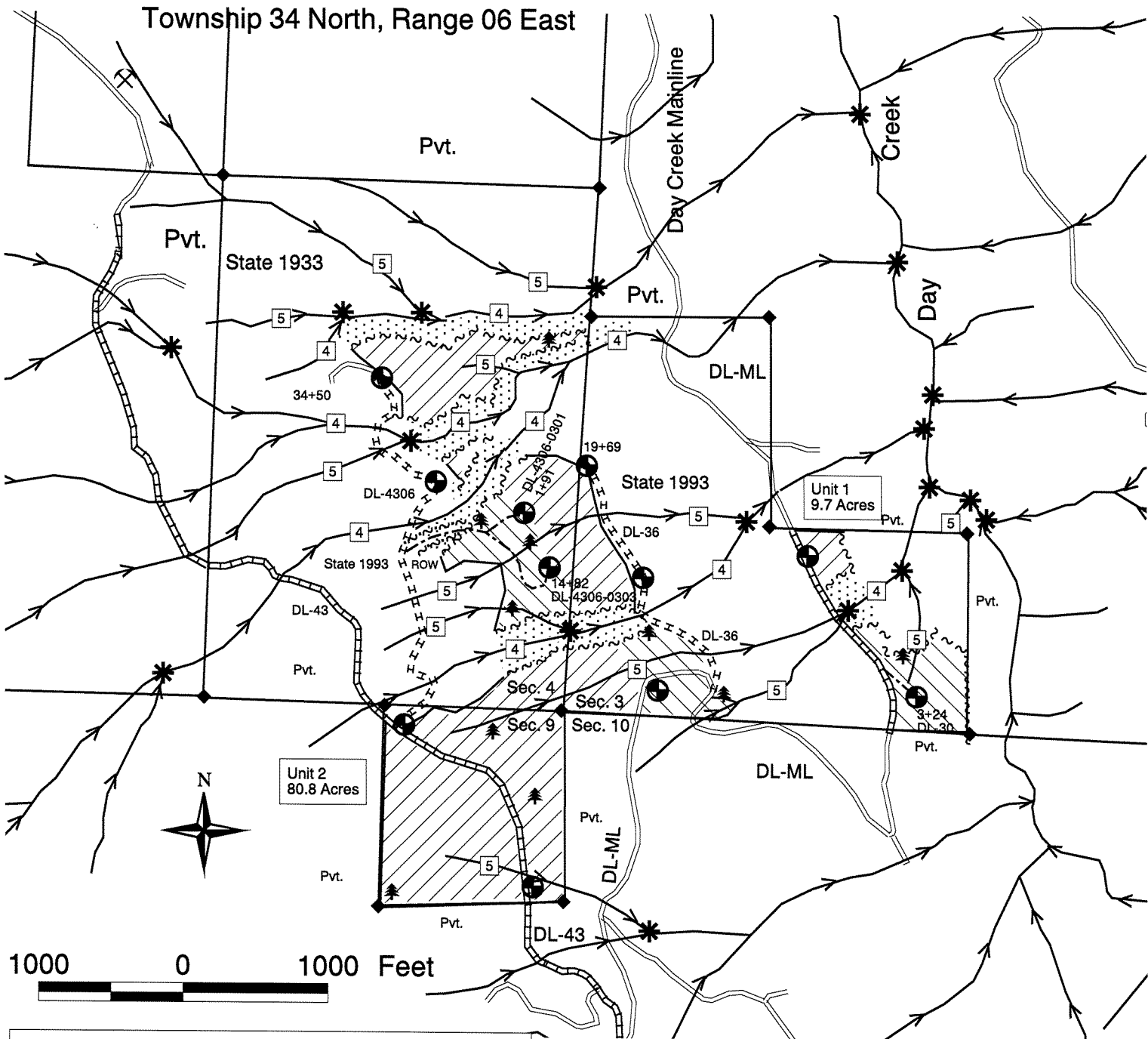
For more information regarding this log sort sale visit our web site:  
<http://www.dnr.wa.gov/htdocs/fr/sales/>. If you have questions call [Theresa Klepl](#) at the [Northwest](#) Region office at 360-403-7678 or [Mike Chandler](#) at the Product Sales and Leasing Division Office in Olympia at 360-902-1738.

**CONFIRMATION:** Each sort is subject to confirmation following auction. No sorts will be confirmed until at least 10 days after all sorts are successfully auctioned.

TIMBER SALE MAP

SALE NAME: Honey Potts  
AGREEMENT NO: 30-078601  
TRUST(S): Forest Board Transfer (01)

REGION: Northwest  
COUNTY(S): Skagit  
ELEVATION: 700-2000 feet



**Legend**

**Units**

- ~~~~~ Sale Boundary Tags
- ~~~~~ Management Unit Boundary Tags
- ~~~~~ R/W Boundary Tags
- Logged Area Boundary

**Logging Methods**

- //// Cable
- ~~~~ Shovel

**Roads**

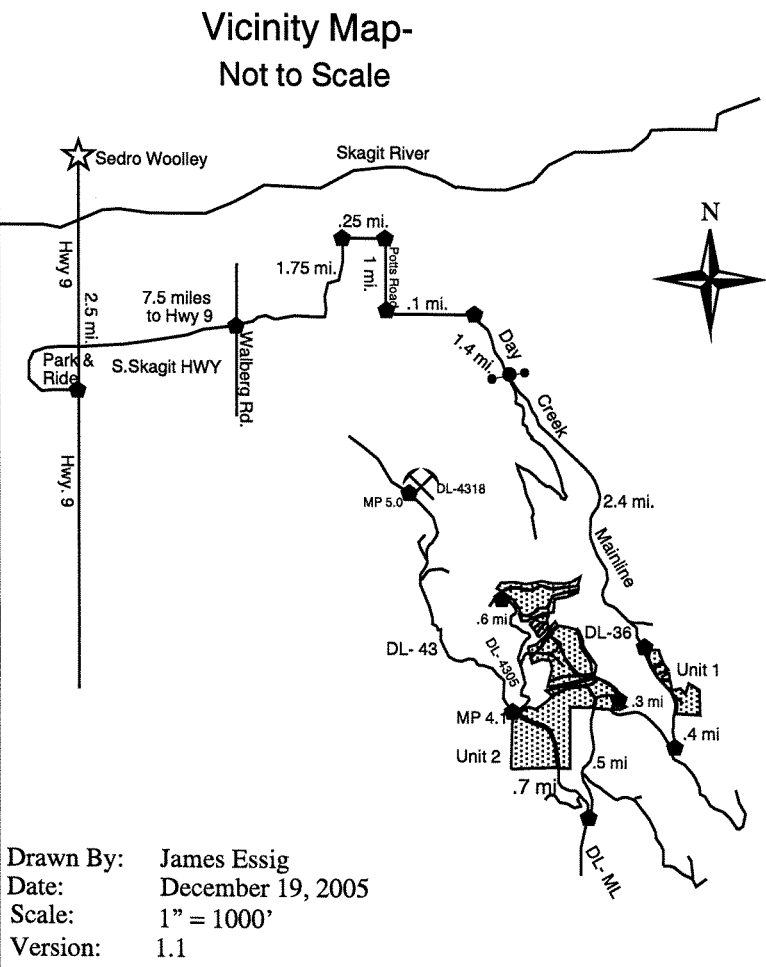
- ===== Existing Road
- Required Reconstruction
- Optional Construction
- Optional Reconstruction

**Streams**

- Type 1-5
- RMZ

**Symbols**

- ⊗ Rock Pit
- \* Water Break
- \* Leave Trees
- ⊙ Landing
- ⊠ Water Type
- Gate
- ◆ Corner Monument



Drawn By: James Essig  
Date: December 19, 2005  
Scale: 1" = 1000'  
Version: 1.1



## TIMBER NOTICE OF SALE

***SALE NAME: LITTLE SWEDEN Log Sorts      AGREEMENT NO: 30-078960 - 30-078966***

**AUCTION:** September 26, 2006, starting at 10:00 a.m.,  
Northeast Region Office, Colville, WA.

**COUNTY:** Stevens

**SALE LOCATION:** Sale located approximately 11 miles southwest of Valley, Washington.

## PRODUCTS SOLD

**AND SALE AREA:** All delivered timber, except western red cedar and ponderosa pine less than eight inches in diameter at breast height, not banded with blue paint in Units #1, #2, #3, #4, and #5 bounded by white timber sale boundary tags and pink ribbon meeting the specifications described below; on parts of Section 36, Township 31 North, Range 39 East, W.M., containing 295 acres, more or less.

**MINIMUM BID AND ESTIMATED LOG SORT VOLUMES:**

Agreement #	Sort #	Average Log Length	Species and Sort Specifications	Estimated Volume		Minimum Bid Delivered Prices		Total Appraised Value	Bid Deposit
				MBF	Tons	\$/mbf	\$/Ton		
30-078960	1	30'	DF, WL 8"+ dib (knots less than 2" & 28" max butt dia) Peeler Grade	1,185	6,909	\$501.48	N/A	\$594,300.00	\$59,430.00
30-078961	2	27'	DF, WL 8"-11" dib Sawlogs	297	2,028	\$488.33	N/A	\$145,000.00	\$14,500.00
30-078962	3	30'	DF, WL 12" + dib Sawlogs	296	1,874	\$487.72	N/A	\$144,400.00	\$14,440.00
30-078963	4	28'	PP 6"-11" dib Sawlogs	252	1,350	\$246.98	N/A	\$62,200.00	\$6,220.00
30-078964	5	30'	PP 12"+ dib Sawlogs	260	1,224	\$476.10	N/A	\$123,800.00	\$12,380.00
30-078965	6	28'	GF, LP 8" + dib Sawlogs	277	1,597	\$381.35	N/A	\$105,600.00	\$10,560.00
30-078966	7	N/A	DF, WL, GF, LP 5"-7" dib Chip & Saw	597	3,766	N/A	\$49.23	\$185,400.00	\$18,540.00

<b>Totals</b>	<b>3,164</b>	<b>18,748</b>	<b>\$1,360,700.00</b>
---------------	--------------	---------------	-----------------------

**BID METHOD:** Sealed Bids

**UNIT OF MEASURE:** MBF scale/Tonnage scale

**EXPIRATION DATE:** February 28, 2007

**ALLOCATION:** Export Restricted

## PAYMENT

**SECURITY:** To be determined by the State as described in Clause P-041 of the Purchaser's Contract.

## BIDDING

**PROCEDURES:** A separate sealed bid and envelope must be submitted for each log sort. Prospective Purchasers may bid on any or all log sorts. On the day of sale the Purchaser must bring their bid deposit up to 10% of their total bid price. Complete bidding procedures and auction information may be obtained from the Northeast Region Office in Colville, WA. Phone number (509) 684-7474.

## HARVEST AND

**DELIVERY COSTS:** Purchaser must pay the forest excise taxes associated with the log sorts delivered to them. The tax rate for this sale is 4.2%. Taxable Stumpage = Total Delivered Value – (Harvest Cost + Haul Cost + ARRF). Use the following rates for estimating taxable stumpage: Harvest Cost = tons x (\$22.00/ton). Haul Cost = (tons) x (((\$2.63/ton base rate) + (\$0.16/ton x C miles) + (\$0.14/ton x A miles)). ARRF = \$22.25/mbf.

**SPECIAL REMARKS:** The successful Purchaser(s) will be required to purchase logs from the sale area upon delivery to their location specified in the bid submitted. Logs will be delivered to the Purchaser's delivery location by the State's contract harvester. Purchaser is responsible for weighing and scaling costs. All mbf and tonnage loads will be weighed and all mbf loads will be scaled at State approved scaling locations. The State reserves the right to determine where logs are authorized to be scaled and weighed.

## TIMBER NOTICE OF SALE

---

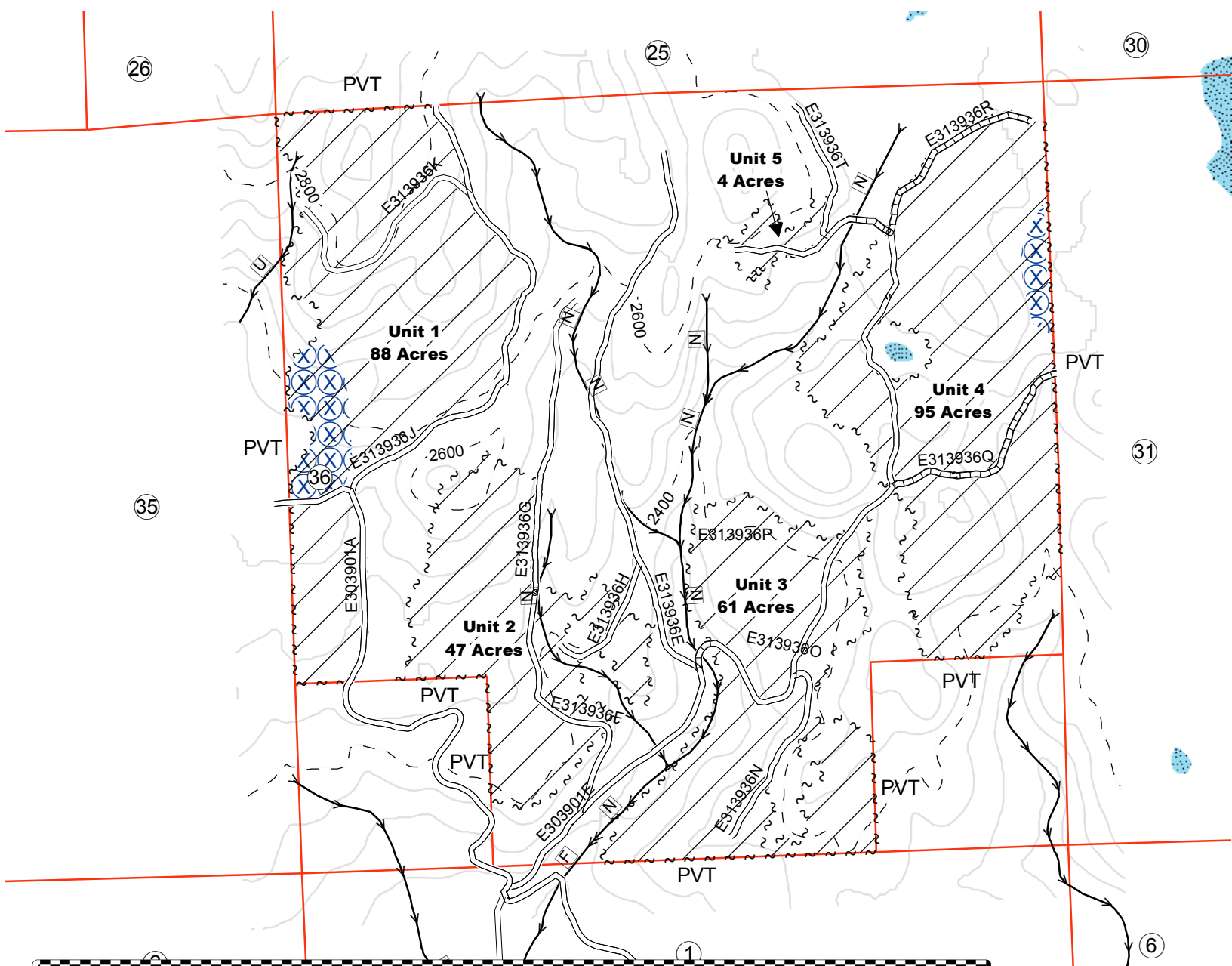
For more information regarding this log sort sale visit our web site:  
<http://www.dnr.wa.gov/htdocs/fr/sales/>. If you have questions call Bob McKellar at the  
Northeast Region office at (509) 684-7474 or Dave Richards at the Product Sales and Leasing  
Division Office in Olympia at (360) 902-1365.

**CONFIRMATION:** Each sort is subject to confirmation following auction. No sorts will be confirmed until at  
least 10 days after all sorts are successfully auctioned.

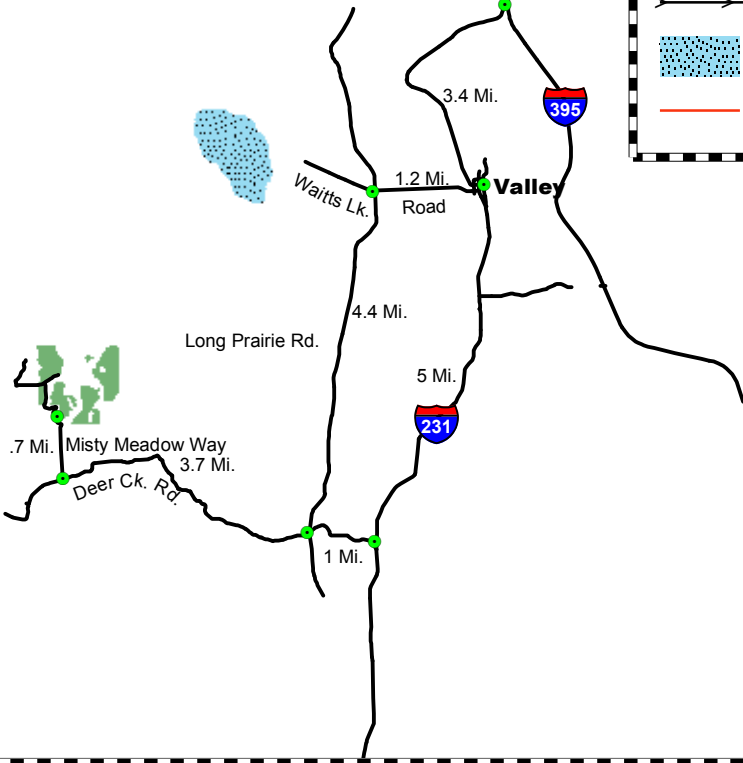
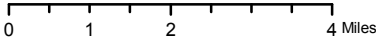
Timber Sale Map

SALE NAME: Little Sweden Sorts  
AGREEMENT NO.: 30-078815  
TRUST(S): School  
Township 31 North, Range 39 East, W. M.  
Exhibit D

REGION: NORTHEAST  
COUNTY: Stevens



Vicinity Map



Legend for the timber sale map:

- Ground Skidding
- Timber Sale Boundary Tags
- Existing Road
- Required Reconstruction
- Extreme hazard Abatement
- Stream
- Lake/Pond
- Section/Property Line

