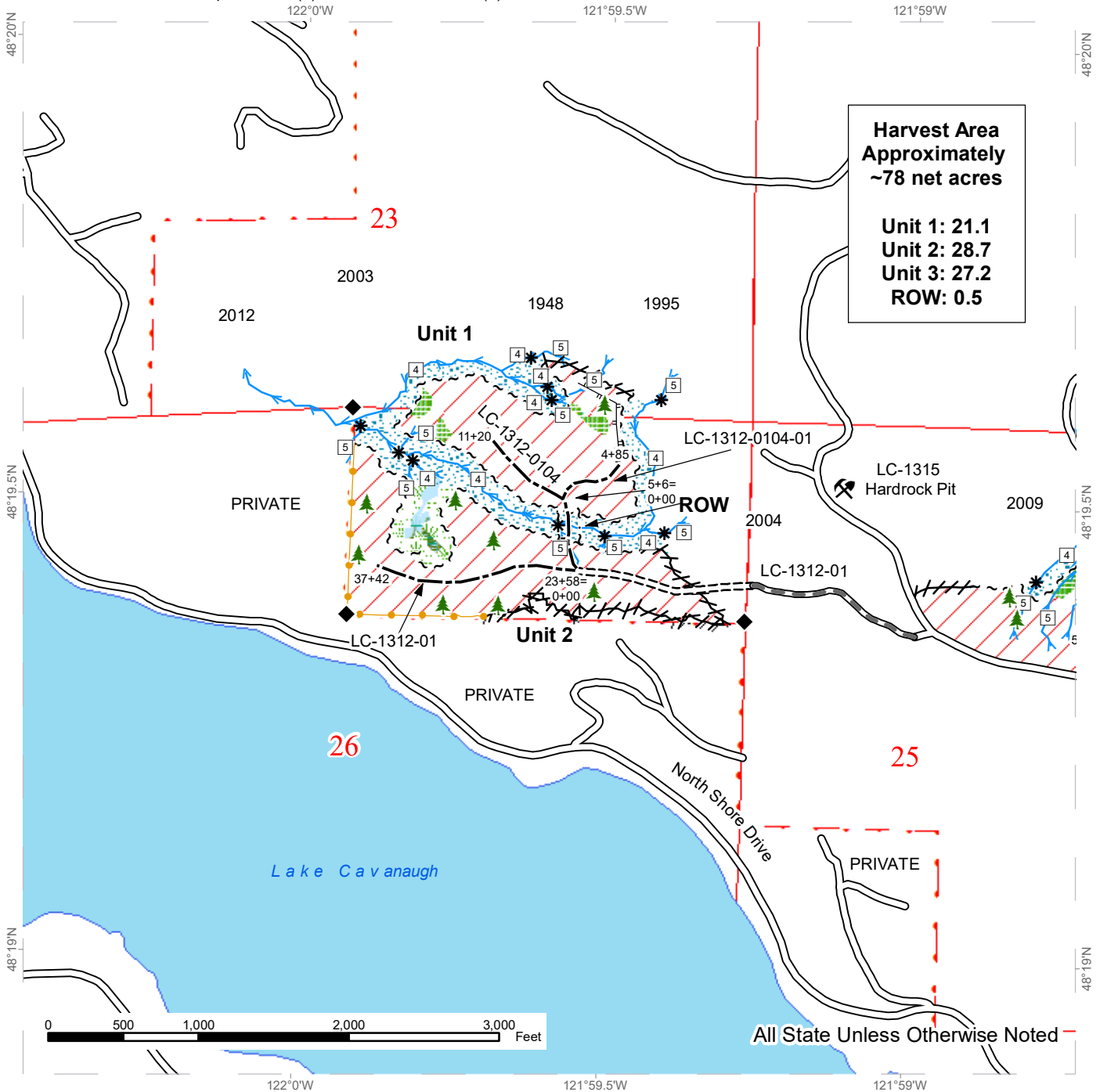


TIMBER SALE MAP

SALE NAME: BUTLERS BOWL
AGREEMENT #: 30-096961
TOWNSHIP(S): T33R6E
TRUST(S): Capitol Grant (7), State Forest Transfer (1)

REGION: Northwest Region
COUNTY(S): Skagit
ELEVATION RGE: 1120-1520



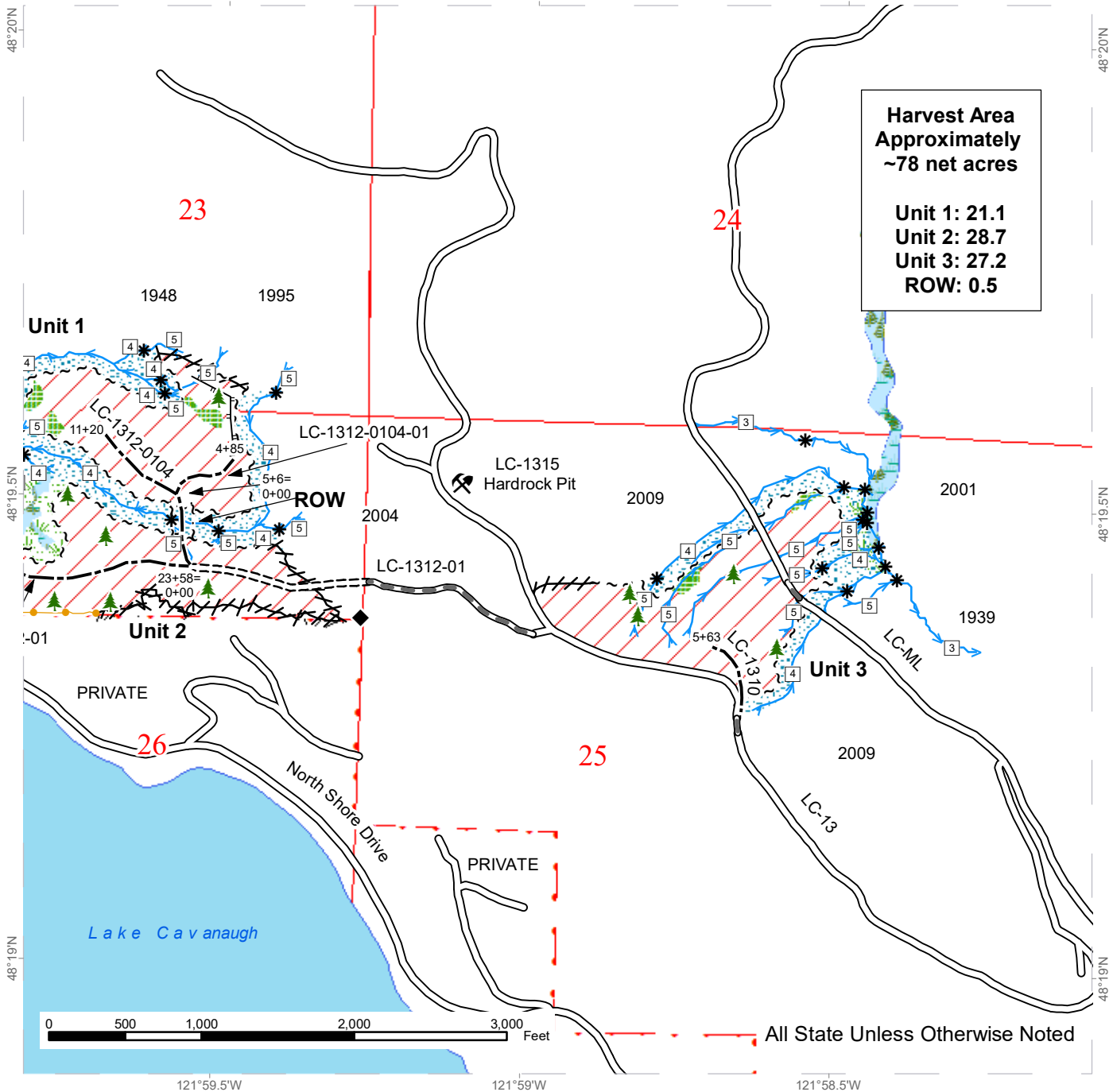
Variable Retention Harvest	Sale Boundary Tags	Existing Roads	Stream Type
Leave Tree Area	Special Mgmt Area	Required Pre-Haul Maintenance	Stream Type Break
Riparian Mgt Zone	Leave Tree Tags	Required Construction	Leave Tree Area <1/4-acre
Forested Wetland	Right of Way Tags	Optional Construction	Rock Pit
Wetland Mgt Zone	Take / Removal Trees	Designated Skid Trail	Survey Monument
Open Water	Property Line	Stream	
Public Land Survey Sections	Flag Line		
DNR Managed Lands	Timber Type Change		

TIMBER SALE MAP

SALE NAME: BUTLERS BOWL
AGREEMENT #: 30-096961
TOWNSHIP(S): T33R6E
TRUST(S): Capitol Grant (7), State Forest Transfer (1)

REGION: Northwest Region
COUNTY(S): Skagit
ELEVATION RGE: 1120-1520

121°59.5'W 121°59'W 121°58.5'W



**Harvest Area
Approximately
~78 net acres**

**Unit 1: 21.1
Unit 2: 28.7
Unit 3: 27.2
ROW: 0.5**

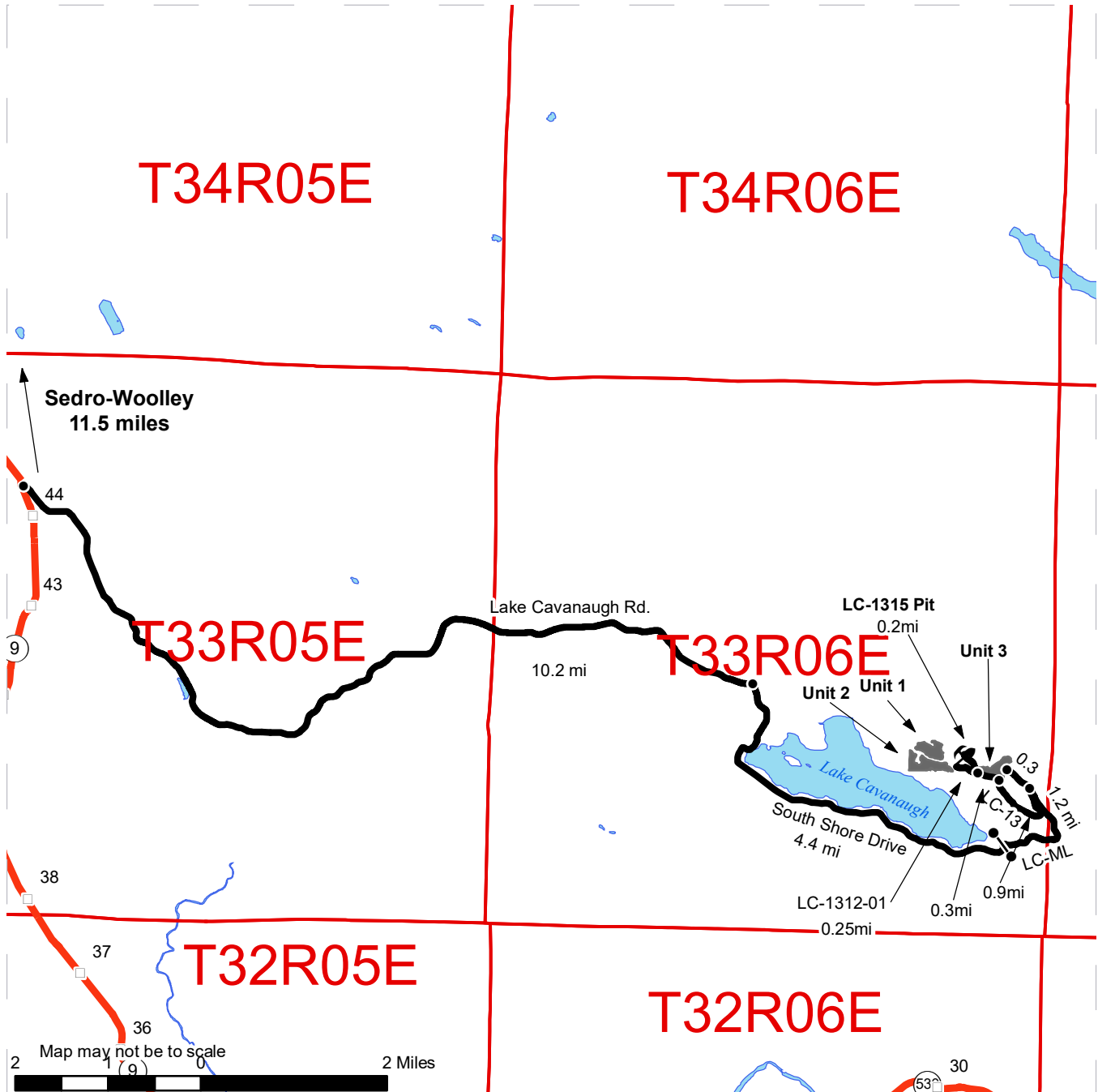
Variable Retention Harvest	Sale Boundary Tags	Existing Roads	Stream Type
Leave Tree Area	Special Mgmt Area	Required Pre-Haul Maintenance	Stream Type Break
Riparian Mgt Zone	Leave Tree Tags	Required Construction	Leave Tree Area <1/4-acre
Forested Wetland	Right of Way Tags	Optional Construction	Rock Pit
Wetland Mgt Zone	Take / Removal Trees	Designated Skid Trail	Survey Monument
Open Water	Property Line	Stream	
Public Land Survey Sections	Flag Line		
DNR Managed Lands	Timber Type Change		



DRIVING MAP

SALE NAME: BUTLERS BOWL
AGREEMENT#: 30-096961
TOWNSHIP(S): T33R6E
TRUST(S): Capitol Grant (7), State Forest Transfer (1)

REGION: Northwest Region
COUNTY(S): Skagit
ELEVATION RGE: 1120-1520



- Timber Sale Unit
- Milepost Markers
- Distance Indicator
- Gate (F-1)
- Rock Pit
- Haul Route
- Highway
- Open Water

DRIVING DIRECTIONS:
 From the junction of Hwy 20 and Hwy 9 in Sedro-Woolley, WA travel 11.5 miles south on Hwy 9 to Lake Cavanaugh Road. Turn left and travel east 10.2 miles to South Shore Drive. Turn right and travel east 4.4 miles to LC-ML. Turn right, pass through the gate and travel east 1.2 miles to junction. Continue 0.3 miles on LC-ML to reach the northern part of Unit 3. From the junction of LC-ML and LC-13, turn left on LC-13 and travel 0.9 miles to reach LC-13-10 new construction and access Unit 3 from the south. Continue west for approximately 0.3 miles to LC-1312-01. Turn left and head east for approximately 0.25 mile to reach the start of new construction to access Units 1 and 2. Travel north on LC-13 for 0.2 mile from the junction of LC-1312-01 to reach the LC-1315 Hardrock Pit.

