

## **Bidder's/Purchaser's Inspection of Sale Area and Forest Products**

Acreage estimates and volume estimates contained within each timber notice of sale and each timber sale contract are made only for administrative and identification purposes. Except as expressly provided by the timber sale contract, the purchaser shall be responsible for paying the entire purchase price, even if the actual acreage or timber volume varies from the estimated quantity or volume shown.

All prospective bidders have the opportunity and are expected to inspect the sale area and the forest products located thereon. Bidders shall not rely on any representations by the State including, but not limited to, acreage estimates, volume estimates, appraisal or pre-bid documentation. The successful bidder/purchaser will further warrant that they have entered the timber sale contract without any reliance upon the DNR's volume estimates, acreage estimates, appraisals, pre-bid documentation, or any other representation by the DNR.

*Any timber sale contract arising out of these public auctions will require the successful purchaser to warrant that they are entering the timber sale contract based solely upon their own judgment of the value of the forest products, formed after their own examination and inspection of both the timber sale area and the forest products being sold.*

---

## **Exclusion and Disclaimer of Warranties**

The PARTIES AGREE that the IMPLIED WARRANTIES OF MERCHANTABILITY AND FITNESS FOR A PARTICULAR PURPOSE, and ALL OTHER WARRANTIES EXPRESS OR IMPLIED, ARE EXCLUDED from this transaction, and shall not apply to the goods sold. For example, THE FOLLOWING SPECIFIC MATTERS ARE NOT WARRANTED, and are EXCLUDED from this transaction:

- a. ***The merchantability of the forest products.*** The use of the term “merchantable” in any document is not intended to vary the foregoing.
- b. ***The condition of the forest products.*** All forest products will be conveyed “AS IS.”
- c. ***The acreage contained within any sale area.*** Any acreage descriptions appearing in the timber notices of sale, timber sale contract, timber sale map or other documents are estimates only, provided solely for administrative and identification purposes.
- d. ***The volume, quality, or grade of the forest products.*** The descriptions of the forest products to be conveyed are estimates only, made solely for administrative and identification purposes.
- e. ***The correctness of any soil or surface conditions, presale construction appraisals, investigations, and all other pre-bid documents prepared by or for the State.*** These documents have been prepared for the State’s appraisal purposes only.
- f. ***That the sale area is free from threatened or endangered species, or their habitat.*** The State is not responsible for any interferences with forestry operations that result from the presence of any threatened or endangered species, or the presence of their habitat, within the sale area.
- g. ***That the forestry operations to be performed under this contract will be free from regulatory actions by governmental agencies.*** The State is not responsible for actions to enforce regulatory laws, such as the Washington Forest Practices Act (Chapter 76.09 RCW), taken by the Department of Natural Resources or any other agency that may affect the operability of these timber sales.
- h. Items contained in any other documents prepared for or by the State.

Please also see timber sale contract clause G-060 for further information.

# BIDDING PROCEDURES FOR TIMBER AUCTIONS

---

*The general requirements that follow are a part of all Timber Notices of Sale to be auctioned by the Department of Natural Resources (DNR).*

---

## General Information

*The State reserves the right to waive minor irregularities and the right to reject any or all bids.*

A. This book contains the timber notices of sale and maps for each timber sale scheduled to be auctioned. More specific information can be obtained by contacting the appropriate region office at the number listed on the back cover of this book.

B. The timber notice of sale is a summary of sale information. For more specific information, interested parties are encouraged to view the Appraisal Packets on the DNR Internet Site @ [www.dnr.wa.gov](http://www.dnr.wa.gov), this will take you directly to the Product Sales Section. The Appraisal Packets contain **DRAFT** copies of the timber notice of sale, map, contract, road plan, cruise data, precruise and cruise narrative, Forest Practices Application (FPA), Hydraulics Project Approval (HPA).

C. The sale preview packets may be obtained at no charge for individual sales by visiting the appropriate region office.

D. Timber sale contracts contain extensive terms and conditions that will be binding upon successful high bidders. Each bidder should carefully review all terms contained in the appropriate **DRAFT** timber sale contract prior to bidding on a sale, and should review the final contract prior to signing. **DRAFT** timber sale contracts are contained in the preview and presales packets and are available upon request at the respective region office.

E. Sales advertised in this book have not been approved by the Board of Natural Resources and are subject to the Board's approval before they will be sold. The Board meets and approves sales approximately six weeks prior to auction. All sales are subject to confirmation by the DNR under RCW 79.15.120.

F. The State does not guarantee the accuracy of any information contained herein pertaining to particular sales. Therefore, all prospective purchasers are expected to make their own independent inspections and appraisals prior to bidding.

G. If any conflict exists between the information in the Timber Notice of Sale, timber sale map, sale preview packets and that in the timber sale contract, the signed contract will prevail.

H. Timber sales are subject to the Washington State Forest Excise Tax (RCW Chapter 84.33).

I. Within 30 days of sale confirmation, the apparent high bidder will provide to the State the Performance Security specified on each Notice of Sale.

J. Each DNR region office has information about sales offered in that region. For further information, contact the respective DNR region office. Region office addresses and telephone numbers appear on the back cover of this booklet.

K. The purchaser assumes the responsibility for any costs associated with extra maintenance or repair levied by a county for any county road used by the purchaser.

## BIDDING PROCEDURES FOR TIMBER AUCTIONS (Continued)

### Bidding Process

- A. All timber will be auctioned using the sealed bid method.
- B. Bids submitted on day of auction must be in the bid box at the specified auction location before 10:00 a.m. The respective DNR region office must receive mailed bids by 4:30 p.m., on the last business day before the auction. Bidders assume all risk for the method of delivery.
- C. The DNR has the right to reject bid forms that are completed incorrectly. *All bid forms must have an original signature on behalf of the person or entity submitting the bid, and must be on the form provided in this booklet or a photocopy thereof. Revised documents are not permissible.* Bidding instructions are on the back of the Sealed Bid Form. A bid deposit must be included in the sealed bid envelope unless using a Timber Sale Statewide Bid Bond.
- D. All bids must include the completed Sealed Bid Form and bid deposit.
- E. Bids will be opened in each respective region in the order in which sales appear in the Public Auction Sale of Timber book (alphabetically by county and by agreement number).
- F. If a tie bid occurs, the names of the tie bidders will be placed in a hat and the successful bidder will be determined by a drawing.
- G. The apparent high bidder on a particular sale will have the option of withdrawing additional sealed bids submitted for any remaining sales to be auctioned. The apparent high bidder must exercise this option within two minutes after the apparent high bidder is announced.

---

### Auction Time and Location

Auctions will start at 10:00 a.m. and close at 4:00 p.m. on the date and at the location specified in each Timber Notice of Sale.

---

### Bid Deposits

- A. Required bid deposits are listed on each Timber Notice of Sale.
- B. Bid deposits must be in the form of cash, certified check, cashiers' check, money order or bid bond.
- C. Bid bonds may be either a Timber Sale Statewide Bid Bond or a Timber Sale Per Sale Bid Bond.
- D. All bid deposits shall be submitted by the person or entity submitting the bid and made payable to the Department of Natural Resources. **Third party deposits will not be accepted.**

---

### Timber Sale Per Sale Bid Bonds

- A. The Per Sale Bid Bond shall guarantee payment of the bid deposit **within ten days of auction.**
- B. The balance between the bid bond and the Initial Deposit payment is due by 4:30 p.m., **on the day of auction.**
- C. Additional forms and instructions for a Per sale Bid Bond are available at any DNR region office.

## Timber Sale Statewide Bid Bond

- A. Statewide Bid Bonds shall guarantee payment of the Initial Deposit on any statewide timber sale while the bond is in effect.
- B. The Statewide Bid Bond must be received by the Department of Natural Resources, Product Sales & Leasing Division, PO BOX 47016, Olympia, Washington, 98504-7016, ten days in advance of the auction date. The bond shall be in the amount of \$150,000.00.
- C. The bidder must supply a list of persons authorized to bid using the bond. Bid bonds are subject to approval by the Department of Natural Resources.
- D. Successful bidders using a Statewide Bid Bond must pay the total Initial Deposit payment (10 percent of the total bid price) **by 4:30 p.m. on the day of auction.**
- E. A Statewide Bid Bond cannot be used to secure the Initial Deposit payment due the day of auction.
- F. Additional forms and instructions for a statewide bid bond are available at any DNR region office.

---

## Payments

The initial deposit for a sale is 10% of the total bid value as submitted by the apparent high bidder (25% if the bidder is a defaulter as defined under WAC 332-140-300) and never less than \$5,000.00 for lump sum sales. For Lump Sum sales appraised at less than \$5,000.00, the entire bid value is due on day of auction.

- a. Apparent high bidders using cash, certified check, cashiers' check or money order as a bid deposit must pay the total Initial Deposit amount by 4:30 p.m. on auction day.
- b. Apparent high bidders using a Timber Sale Per Sale Bid Bond as a bid deposit must pay the difference between the bid deposit and the total initial deposit by 4:30 p.m., on the day of auction. The bid bond amount must be replaced with a certified check, cashier's check, bank draft, cash, money order, or wire transfer within ten days of the auction.
- c. Apparent high bidders using a Timber Sale Statewide Bid Bond must pay the entire Initial Deposit amount by 4:30 p.m. on the day of auction.

---

## Fees due on the day of sale must be paid by 4:30 p.m.

All payments must be in the form of a certified check, cashier's check, bank draft, cash, money order or wire transfer.

---

## Eligibility to Bid

In order to bid on State timber sales you must be:

- 18 years of age (or have a co-signer who meets the eligibility requirements),
- Licensed to do business in the State of Washington,
- Eligible to bid on Export Restricted timber, and
- Capable of meeting all contract obligations.

## Authorized Representatives

Companies may only use authorized representatives or company officers to bid on State sales, sign State documents or sign checks. A list of authorized representatives and their specific authorities must be submitted in writing to the Department of Natural Resources Product Sales & Leasing Division, PO BOX 47016, Olympia, Washington, 98504-7016, ten days in advance of the auction. A company owner or officer must sign this submittal.

State of Washington  
Department of Natural Resources  
Doug Sutherland, Commissioner of Public Lands

SEALED BID FORM

Sale Name \_\_\_\_\_ Agreement Number \_\_\_\_\_

\_\_\_\_\_ hereby submits the following bid for timber.  
(Print full, legal company name)

\_\_\_\_\_  
(Street address, City, State, Zip Code)

\_\_\_\_\_  
(Phone Number)

**Lump Sum Bid** (Not Including Fees) \$\_\_\_\_\_ **For Total Sale**

**Weight Scale Sale Bid** (Not Including Fees) \$\_\_\_\_\_ / **Ton**

**Scribner Scale Sale Bid** (Not Including Fees) \$\_\_\_\_\_ / **MBF**

**BID DEPOSIT**

**Bid Deposit Amount:** \$\_\_\_\_\_

**Bid Deposit Type:**

- ☐ Cash, certified check, cashiers check, or money order  
☐ Per Sale Bid Bond  
☐ Statewide Bid Bond, Number \_\_\_\_\_

The Successful Bidder agrees to furnish, **within 30 days of confirmation date**, Performance Security acceptable to the State in the amount specified on the Notice of Sale. Performance Security must guarantee performance of all provisions of the contract and payment of any damages caused by operations under the contract or resulting from the successful bidders noncompliance with any rule or law.

**Bidder's Warranty and Bid Signature**

*By signing and submitting this bid as an offer to purchaser forest products from the State, the Bidder hereby warrants to the State that they have had an opportunity to fully inspect the sale area and the forest products being sold. Bidder further warrants to the State that they enter this bid based upon their own judgments of the value of the forest products, formed after their own examination and inspection of both the timber sale area and the forest products being sold. Bidder also warrants to the State that they enter this bid without any reliance upon the volume estimates, acreage, appraisals, pre-bid documentation, or any other representation by the Washington State Department of Natural Resources.*

\_\_\_\_\_  
(Signature of Authorized Representative submitting this bid)

Date \_\_\_\_\_

\_\_\_\_\_  
(Print **name and title** of Authorized Representative submitting this bid)

**Note: all sales are subject to confirmation by the Commissioner of Public Lands (Refer to RCW 79.15.120)**

# Instructions For Completing Sealed Bid Form

*All bids submitted for the purchase of forest products being sold by the Washington State Department of Natural Resources must have an original signature on behalf of the person or entity submitting the bid, and must be on the form provided in this booklet or a photocopy thereof. The DNR will not accept bids that are not signed, and will not accept bids that are not on the current, approved bid form. All appropriate blanks on bid form must be completed including the bid bond number if the bidder is relying upon a bid bond for bid deposit.*

*For more specific information, contact the appropriate region office.*

---

## In-Person Bids

- A. Sealed bids must be in auction box before 10:00 a.m. on the day of auction at the location specified in the Timber Notice of Sale.
- B. Sealed bids must be submitted in an envelope with the name of the sale, the bidder's name and the contract number clearly written on the outside of the envelope. The full legal name and business address of the bidder must be inserted where indicated on the form, and must be on the bid bond and timber sale contract. The bid form must be signed by an authorized representative. When a bidder has more than one person authorized to bid, documentation of those persons with signature authority for bidding must accompany the bid or be on file at the region office. Sealed bid envelopes are available at all region offices. One bid per envelope.
- C. Sealed bid envelopes **must** contain a completed bid form and a bid deposit.
- D. Sealed bid envelopes **may** contain a check for the Initial Deposit amount and a check for fees.

---

## Mailed Bids

- A. Bids that are mailed are required to have printed on the outside: "DO NOT OPEN UNTIL SALE DATE. SEALED BID ENCLOSED". The sealed bid envelope(s) will be enclosed inside the mailed-in envelope. Mailed bids must be submitted in an envelope with the name of the sale, the bidder's name and the agreement number clearly written on the outside of the envelope. The full legal name and business address of the bidder must be inserted where indicated on the form, and must be the same on the bid bond and timber sale contract. The Sealed Bid Form must be signed by an authorized representative. When a bidder has more than one person authorized to bid, then documentation of those persons with signature authority for bidding must accompany the bid or be on file at the region office. Mail-in envelopes are available at all region offices. One bid per mailed-in envelope.
- B. Bids that are mailed will be accepted up to 4:30 p.m. the last business day before the auction by the region office in which the sale is located. Bidders assume the risk for the method of delivery. The DNR assumes no responsibility for any delays caused by any delivery service.
- C. Sealed bid envelopes **must** contain a completed bid form and a bid deposit.
- D. Sealed bid envelopes **may** contain a check for the Initial Deposit amount and a check for fees.

---

## Initial Deposit:

**Lump Sum Sales** - Initial Deposit must equal 10% of the total bid submitted.  
(25% if the bidder is a defaulter as defined under WAC 332-140-300)

**Weight Scale Sales** - Initial Deposit must equal 10% of the bid per ton multiplied by the total sale estimated tonnage. (25% if the bidder is a defaulter as defined under WAC 332-140-300)

**Scribner MBF Scale Sales** - Initial Deposit must equal 10% of the bid per MBF multiplied by the total sale MBF. (25% if the bidder is a defaulter as defined under WAC 332-140-300)

State of Washington  
Department of Natural resources  
Doug Sutherland, Commissioner of Public Lands

STATEWIDE BID BOND

Bond Number \_\_\_\_\_

\_\_\_\_\_ of \_\_\_\_\_,  
(Principal's Name) (City, State)

hereinafter called PRINCIPAL, and \_\_\_\_\_ hereinafter called SURETY,

a corporation organized under the laws of the State of \_\_\_\_\_, and authorized to transact surety business in the State of Washington, as SURETY, are held and firmly bound jointly and severally to the State of Washington, Department of Natural Resources, hereinafter called the STATE, in the sum of \$150,000.00 Dollars, lawful money of the United States of America. The PRINCIPAL binds itself, its heirs, executors, administrators, successors, and assigns, and the SURETY binds itself, its successors, and assigns, all jointly and severally.

This bond shall be governed by the laws of the State of Washington. In the event of a lawsuit involving this bond, a venue shall be proper only in Thurston County Superior Court.

Signed, sealed and dated this \_\_\_\_\_ day of \_\_\_\_\_, \_\_\_\_\_.  
(month) (year)

This statewide bid bond may be used for bidding between the following dates:

Starting: \_\_\_\_\_

Ending: \_\_\_\_\_

**It Is Hereby Understood and Agreed:**

If PRINCIPAL is an apparent high bidder, PRINCIPAL shall before 4:30 p.m., on day of sale, pay to the STATE the amount of the initial deposit in the form of a certified check, cashier's check, bank draft, cash or money order, then this agreement shall be void for the sale on which the payment is made; otherwise, it will remain in force.

SURETY will make payment to the STATE within ten days after demand by the STATE if the PRINCIPAL shall fail to make timely payment as described above.

The SURETY may cancel this bond by sending a written notice to the STATE, not less than forty-five days before a cancellation date; liability shall terminate as to acts or omissions of the PRINCIPAL that occur after the cancellation date.

The PRINCIPAL and the SURETY executed this bond on the date first mentioned.

**Principal:** (Above named)

Signature: \_\_\_\_\_

Name: \_\_\_\_\_

Title: \_\_\_\_\_

Address: \_\_\_\_\_

City: \_\_\_\_\_  
State & Zip Code

**Surety:** (Above named)

Signature: \_\_\_\_\_

Name: \_\_\_\_\_

Title: \_\_\_\_\_

Address: \_\_\_\_\_

City: \_\_\_\_\_  
State & Zip Code

**Surety:** (Local Office of Authorized agent)

Signature: \_\_\_\_\_

Name: \_\_\_\_\_

Title: \_\_\_\_\_

Address: \_\_\_\_\_

City: \_\_\_\_\_  
Above  
State & Zip

Notary or Company Seal in Space

## Instructions For Completing Timber Sale Statewide Bid Bond

- A. This form is authorized for use as bid guaranty to qualify for bidding on Washington State Department of Natural Resources timber sales.
- B. The Statewide Bid Bond may be used as bid guaranty on more than one timber sale.
- C. The full legal name and business address of the PRINCIPAL must be inserted where indicated and must be the same as will appear on the bidding record and timber sale contract. The bond must be signed by an authorized person. Additionally, the name must be typed or printed below the signature and title must be shown.
- D. The full legal name and business address of the SURETY must be inserted where indicated. The bond must be signed by an authorized person. Additionally, the name must be typed or printed below the signature and the title must be shown.
- E. If the SURETY does not have a Washington State office or resident agent, but is authorized to transact surety business in the State of Washington as SURETY, it may leave this signature block blank.
- F. This form must be received by the Department of Natural Resources, Product Sales and Leasing Division, PO BOX 47016, Olympia, Washington, 98504-7016, ten days in advance of the auction.
- G. The PRINCIPAL must submit a list of authorized bidders with the Statewide Bid Bond Form.
- H. **The State reserves the right to reject *incomplete* or *incorrect* bid bond forms, making such forms unacceptable as bid guaranty.**



State of Washington  
Department of Natural Resources  
Doug Sutherland, Commissioner Of Public Lands

Timber Sale Per Sale Bid Bond

Bond Number\_\_\_\_\_

\_\_\_\_\_ of \_\_\_\_\_, hereinafter called PRINCIPAL, and \_\_\_\_\_, hereinafter called SURETY, a corporation organized under the laws of the State of \_\_\_\_\_ and authorized to transact surety business in the State of Washington, as SURETY, are held and firmly bound jointly and severally to the State of Washington, Department of Natural Resources, hereinafter called the STATE, in the sum of \$\_\_\_\_\_Dollars, lawful money of the United States of America. The PRINCIPAL binds itself, its heirs, executors, administrators, successors, and assigns, and the SURETY binds itself, its successors, and assigns, all jointly and severally.

This bond shall be governed by the laws of the State of Washington. In the event of a lawsuit involving this bond, venue shall be proper only in Thurston County Superior Court.

Signed, sealed, and dated this\_\_\_\_\_day of \_\_\_\_\_, 20\_\_\_\_\_.

BID IDENTIFICATION:

SALES NAME(S)	REQUIRED DEPOSIT	AGREEMENT NUMBER(S)

DATE OF BID: \_\_\_\_\_

It Is Hereby Understood and Agreed:

If PRINCIPAL is the high bidder on the sale(s) identified above and, within ten (10) days of the day of sale, transmits cash, certified check, cashier=s check, bank draft or money order, payable to the STATE, in the amount of the bid guaranty required by the terms of the Notice of Sale, *then* this obligation shall be void; *otherwise*, it shall remain in force.

SURETY will make payment to the STATE within ten (10) days after demand by the STATE whenever the PRINCIPAL shall fail to make timely payment as described above.

IN WITNESS WHEREOF: the PRINCIPAL and the SURETY have caused this bond to be executed on the date first mentioned.

SECOND OFFICER:

Signature: \_\_\_\_\_

Name: \_\_\_\_\_

Title: \_\_\_\_\_

PRINCIPAL: (Above Named)

Signature: \_\_\_\_\_

Name: \_\_\_\_\_

Title: \_\_\_\_\_

Address: \_\_\_\_\_

SURETY: (Local Office of Authorized Agent)

Signature:\_\_\_\_\_

Name: \_\_\_\_\_

Title: \_\_\_\_\_

Address: \_\_\_\_\_

City: \_\_\_\_\_

State & Zip: \_\_\_\_\_

City: \_\_\_\_\_

State & Zip:

SURETY: (Above Named)

Signature: \_\_\_\_\_

Name: \_\_\_\_\_

Title: \_\_\_\_\_

Address: \_\_\_\_\_

City: \_\_\_\_\_

State & Zip\_\_\_\_\_

NOTARY OR COMPANY SEAL IN THE SPACE ABOVE

## Instructions For Completing Timber Sale PerSale (s) Bid Bond

- A. This form is authorized for use as bid guaranty to qualify for bidding on Washington State Department of Natural Resources timber sales.
- B. The Timber Sale Per Sale Bid Bond may be used as bid guaranty on more than one timber sale auction held the same date at the same location.
- C. The full legal name and business address of the PRINCIPAL must be the same as will appear on the bidding record and timber sale contract. The bond must be signed by an authorized person, the name typed or printed, and title shown. If PRINCIPAL is a corporation, a second officer must sign in the space to the left of the signature of the officer executing for the PRINCIPAL.
- D. The full legal name and business address of the SURETY must be inserted where indicated. The bond must be signed by an authorized person. Additionally, the name must be typed or printed below the signature and the title must be shown. If this person is not an officer of the corporation, evidence of authority must be submitted.
- E. If the SURETY does not have a Washington State office or resident agent, but is authorized to transact surety business in the State of Washington as Surety, it may leave the local office signature block blank.
- F. The date of the bid bond must not be later than the auction date.
- G. **The State reserves the right to reject *incomplete or incorrect* bid bond forms, making such forms unacceptable as guaranty.**

TIMBER NOTICE OF SALE

SALE NAME: CATAMOUNT

AGREEMENT NO: 30-076969

AUCTION:

October 25, 2005 starting at 10:00 a.m.,  
South Puget Sound Region Office, Enumclaw, WA

COUNTY: Clallam

SALE LOCATION:

Sale located approximately 7 miles east of Sequim, WA

PRODUCTS SOLD  
AND SALE AREA:

All timber bounded by timber sale boundary tags, a logged area, and management lines, except leave trees marked with blue paint or bounded by leave tree area tags in Unit #1; all timber bounded by timber sale boundary tags, management lines, and Thompson Road, except leave trees marked with blue paint or bounded by leave tree area tags in Unit #2; all timber bounded by timber sale boundary tags and logged areas, except leave trees marked with blue paint or bounded by leave tree area tags in Units #3 and #4 on part(s) of Sections 8 and 9 all in Township 29 North, Range 2 West, Sections 30 and 31 all in Township 30 North, Range 2 West, W.M., containing 147 acres, more or less.

ESTIMATED SALE VOLUMES AND QUALITY:

Species	Avg DBH	Ring Count	Total MBF	MBF by Grade								
				1P	2P	3P	SM	1S	2S	3S	4S	UT
Douglas fir	14.7	10	3,018			34	155		1,010	1,503	317	
Hemlock	14.8	9	400						119	248	33	
Red cedar	14.9		327						30	250	47	
Red alder	10.1		29						11		18	
Sale Total			3,774									

MINIMUM BID:

\$1,299,000.00

BID METHOD:

Sealed Bids

PERFORMANCE  
SECURITY:

\$100,000.00

SALE TYPE:

Lump Sum

EXPIRATION DATE:

April 30, 2007

ALLOCATION:

Export Restricted

BID DEPOSIT:

\$129,900.00 or Bid Bond. Said deposit shall constitute an opening bid at the appraised price.

HARVEST METHOD:

Unit #1 - shovel, tracked skidder, and/or rubber tired skidder; Unit #2 - shovel and/or tracked skidder; Units #3 and #4 - cable with motorized carriage with minimum 75 foot lateral yarding capabilities and shovel and/or tracked skidder - rubber tired skidders will not be allowed except for use on designated skid trail in Unit #4. The cable yarding in Unit #4 is to be flown up to the landing at station 10+00 on the PT-B-1420 road. Yarding will not be permitted from November 1 to June 30 unless authorized in writing by the Contract Administrator for rubber tired skidder operations in Unit #1. Ground yarding will be restricted in Unit #2 from December 1 to February 28 and in Units #3 and #4 from December 1 to June 30. In addition, in Units #1 and #2, no operations will be allowed before 6:00am or after 8:00pm, or at all during weekends or State recognized holidays.

ROADS:

16.04 stations of required construction. 41.80 stations of optional construction. 33.00 stations of required pre-haul maintenance. 22.50 stations of optional pre-haul maintenance. Purchaser maintenance is required on all roads used.

ACREAGE DETERMINATION

CRUISE METHOD:

Units were traversed 40% by third order survey data and 60% ground traversed. All units were cruised using a variable plot sample with a BAF of 40.00F on a 330 x 300 foot grid for Units #1 and #2, and a BAF of 54.44F on a 330 x 330 foot grid for Units #3 and #4.

FEES:

\$50,006.00 is due on day of sale. \$9.00 per MBF is due upon removal. These are in addition to the bid price.

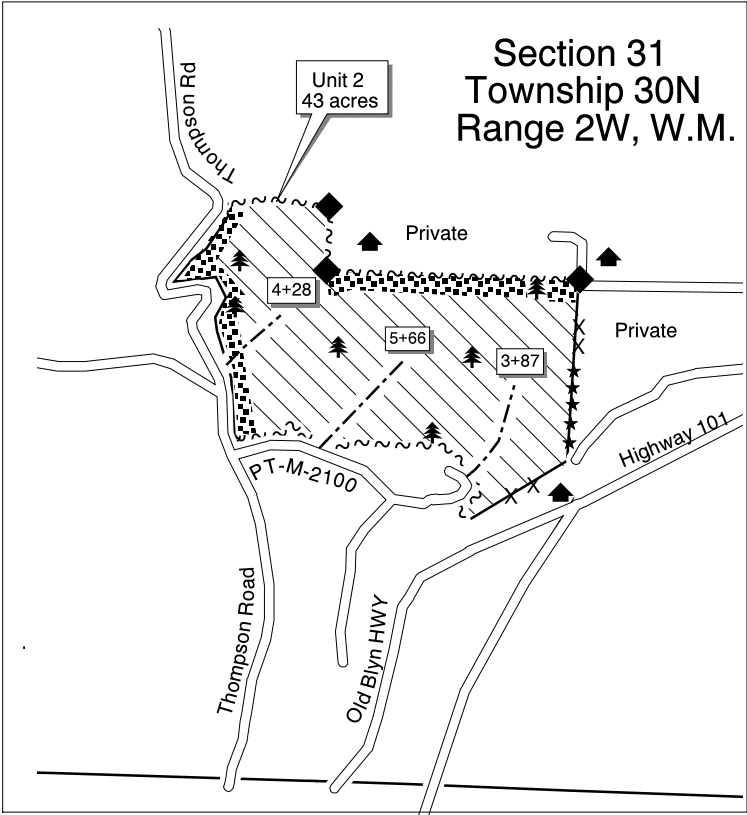
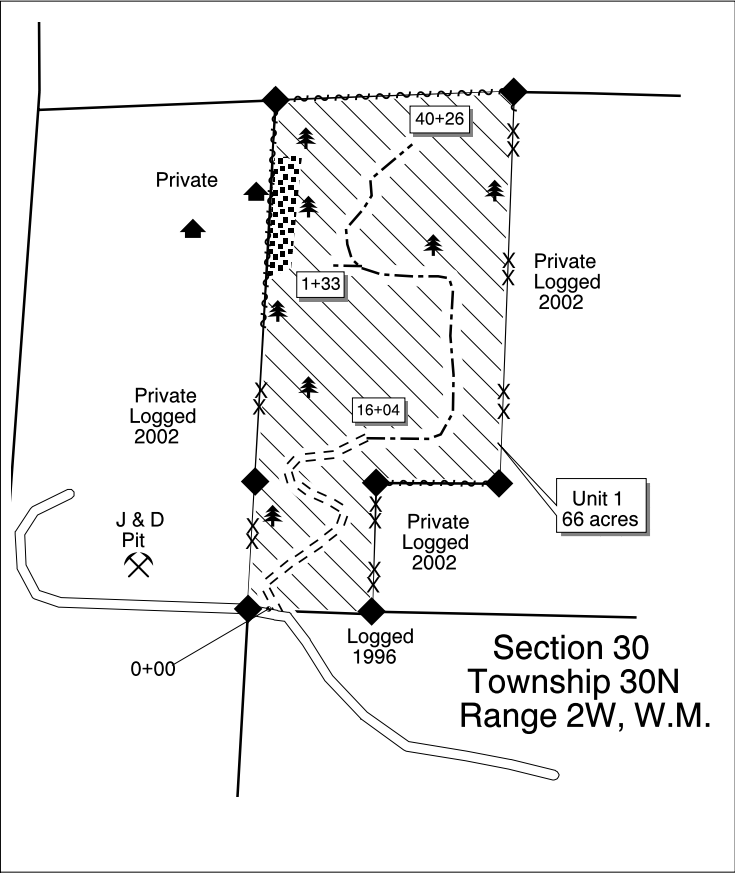
SPECIAL REMARKS:

Cruise includes 282 mbf of high value DF. There is a gate located at the junction of Pierce Road and the PT-M-1000 Road. Contact the Olympic Region Dispatch Center at 360-374-6131, to obtain a AA-1 key. Hazard abatement will be required in Unit #1 along the western border, 200 feet from a residence and 200 feet wide. Unit 2 will require hazard abatement along Thompson Road, 100 feet from the road and 2,196.5 feet along its length. Hazard abatement will also be required for 200 feet from two residences, both 100 feet along each of their lengths.

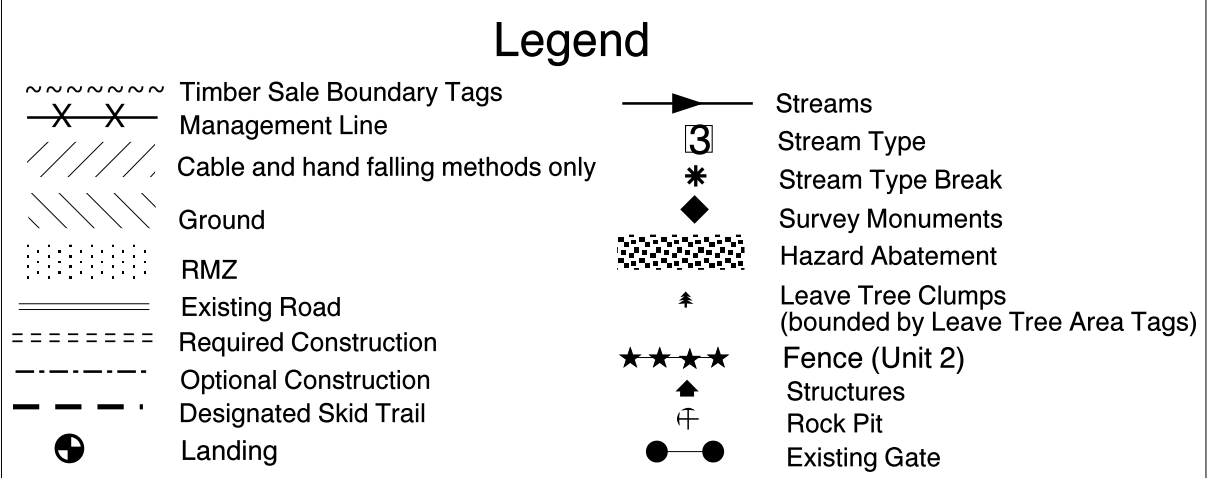
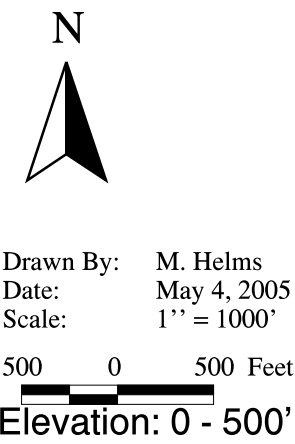
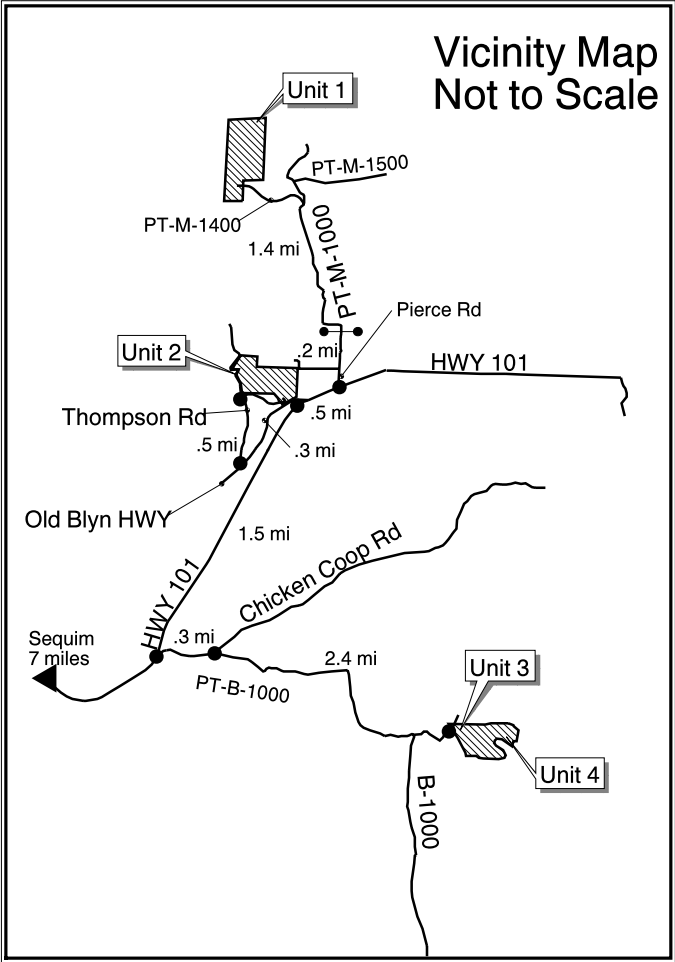
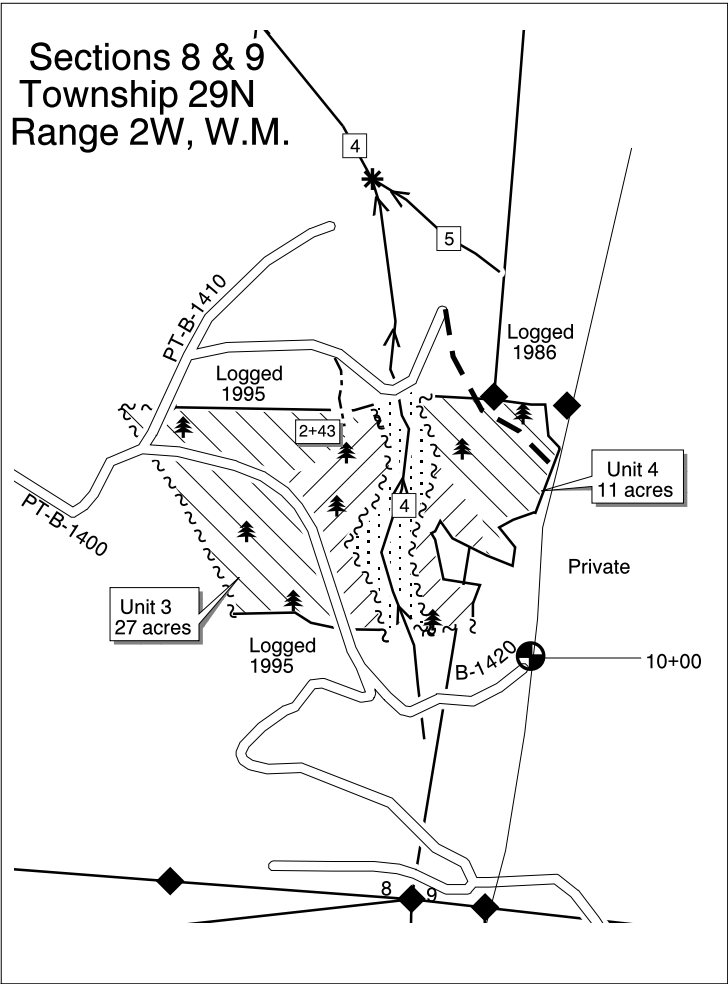
TIMBER SALE MAP

SALE NAME: CATAMOUNT  
AGREEMENT NO: 30-076969  
TRUST(S): Forest Board Transfer

REGION: Olympic  
COUNTY(S): Clallam



See Road Plan For Pre-haul  
Maintenance Locations and  
Requirements.



TIMBER NOTICE OF SALE

SALE NAME: SALMONSTEAD

AGREEMENT NO: 30-077358

AUCTION:October 25, 2005 starting at 10:00 a.m.,  
South Puget Sound Region Office, Enumclaw, WA

COUNTY: Clallam, Jefferson

SALE LOCATION: Sale located approximately 6 miles south of Blyn, WA

PRODUCTS SOLD  
AND SALE AREA: All timber bounded by timber sale boundary tags, a powerline easement, and logged areas, except leave trees marked with blue paint or bounded by leave tree area tags in Unit #1; all timber bounded by timber sale boundary tags, except leave trees marked with blue paint or bounded by leave tree area tags in Units #2 and #3; all timber bounded by timber sale boundary tags and a logged area, except leave trees marked with blue paint or bounded by leave tree area tags in Unit #4; on part(s) of Sections 21, 28 and 29 all in Township 29 North, Range 2 West, W.M., containing 142 acres, more or less.

ESTIMATED SALE VOLUMES AND QUALITY:

Species	Avg DBH	Ring Count	Total MBF	MBF by Grade								UT
				1P	2P	3P	SM	1S	2S	3S	4S	
Douglas fir	18.9	6	3,443				64		2,134	1,096	149	
Hemlock	12.7	6	814						178	485	153	
Red alder	14.7		768					104	127	129	408	
Red cedar	12.2		110							90	20	
Maple	12.9		19						6	6	7	
Sale Total			5,154									

MINIMUM BID:\$1,710,000.00

BID METHOD:Sealed Bids

PERFORMANCE  
SECURITY:\$100,000.00

SALE TYPE:Lump Sum

EXPIRATION DATE:July 31, 2007

ALLOCATION:Export Restricted

BID DEPOSIT: \$171,000.00 or Bid Bond. Said deposit shall constitute an opening bid at the appraised price.

HARVEST METHOD: Cable, shovel, and tracked skidder as shown on the timber sale map. Tracked skidder shall be limited to D-6 or less. Feller buncher will be allowed on all cable with pre-bunch ground as shown on the timber sale map. Falling and Yarding will not be permitted from December 1 to March 31 unless authorized in writing by the Contract Administrator.

ROADS: 8.95 stations of required reconstruction. 33.63 stations of optional construction. 9.78 stations of optional reconstruction. 3.3 miles of required pre-haul maintenance. Purchaser maintenance on all roads used, with the exception of the FS-2850, which will be designated maintenance. The hauling of forest products will not be permitted from December 1 to March 31 unless authorized in writing by the Contract Administrator.

ACREAGE DETERMINATION

CRUISE METHOD: Units were 97% ground traversed and 3% photo traversed. Errors of closure are - Unit #1 - 215, Unit #2 - 146, Unit #3 - 129, and Unit #4 - 132. Units were cruised using a variable plot sample with a BAF of 40.00F for hardwoods and 54.44F for conifer on a 330 x 330 foot grid for Unit #1; a BAF of 54.44F on a 330 x 330 foot grid for Unit #2; and a BAF of 62.50F on a 330 x 330 foot grid for Units #3 and #4.

FEES: \$68,291.00 is due on day of sale. \$9.00 per MBF is due upon removal. These are in addition to the bid price.

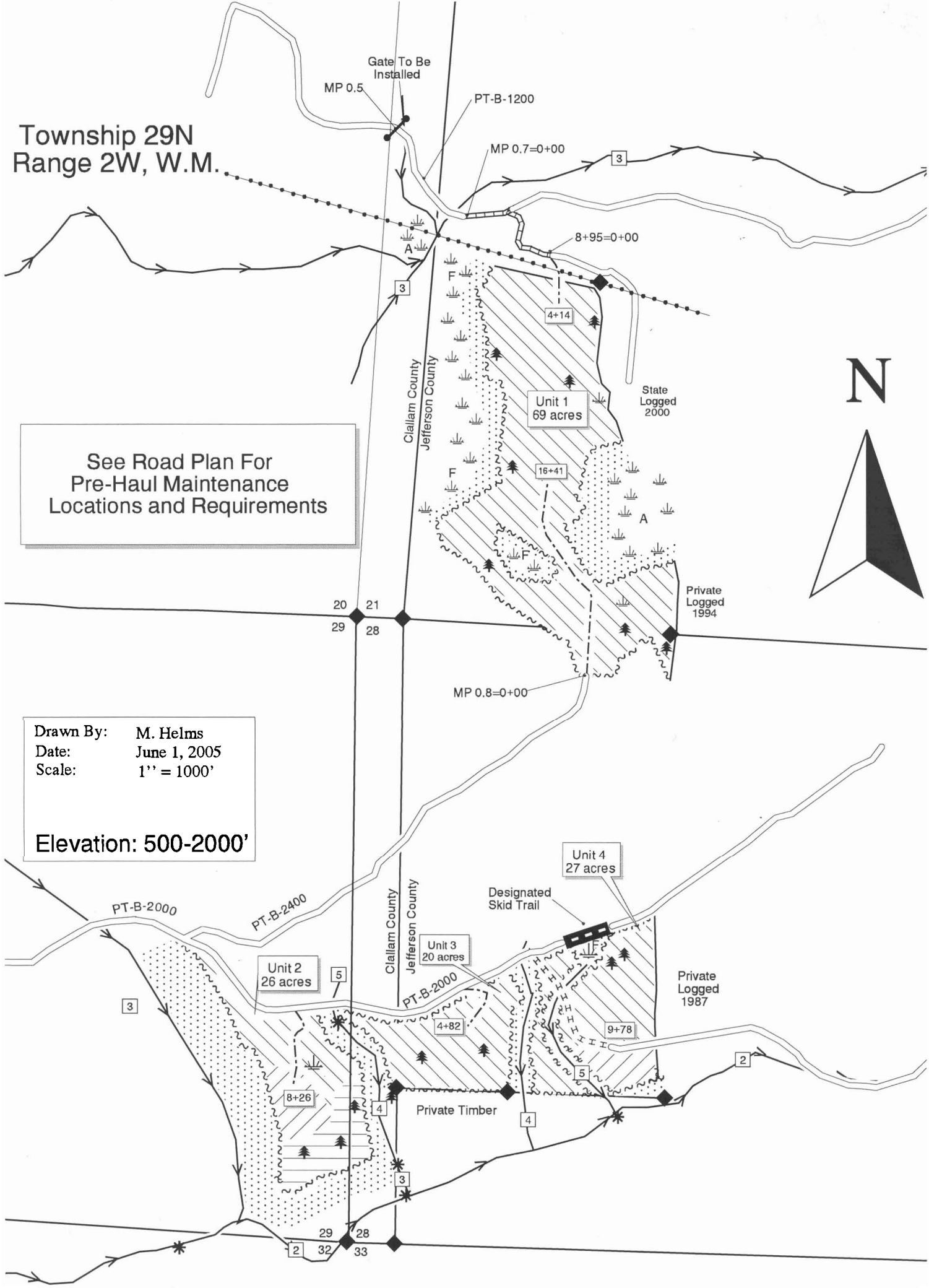
SPECIAL REMARKS: There are locked gates on the PT-B-2000 and PT-B-1020(access road for Jimmy-Come-Lately Pit). Contact the Olympic Region's Dispatch Center at 360-374-6131, to obtain a AA-1 key. Purchaser shall furnish and install a 16 foot wide steel gate mounted on steel posts. See road plan for details.



TIMBER SALE MAP

SALE NAME: SALMONSTEAD  
AGREEMENT NO: 30-077358  
TRUST(S): Forest Board/Capitol

REGION: Olympic  
COUNTY(S): Clallam/Jefferson

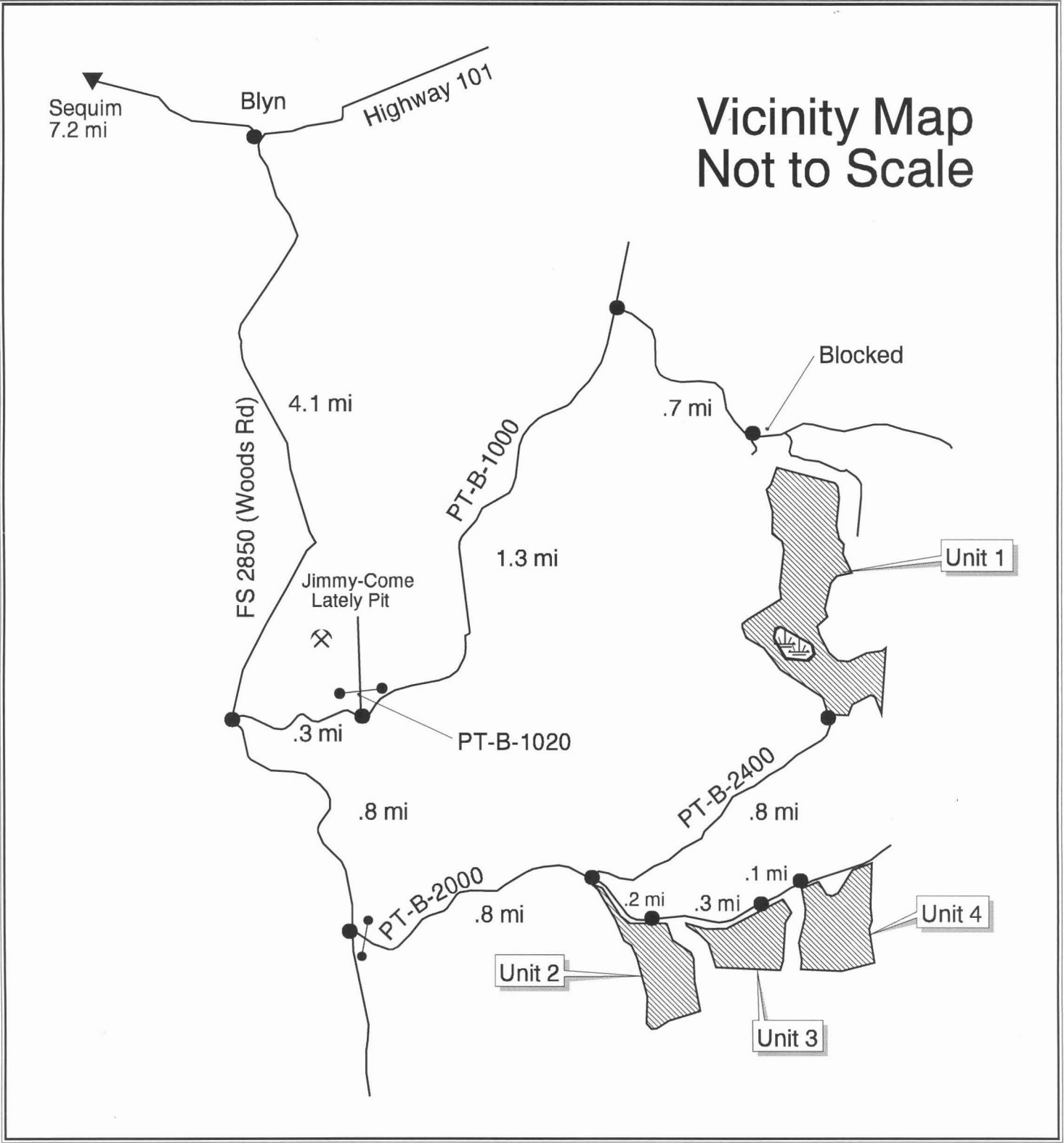


Drawn By: M. Helms  
Date: June 1, 2005  
Scale: 1" = 1000'  
  
Elevation: 500-2000'

Legend		
~~~~~ Timber Sale Boundary Tags	==== Existing Road	/// Cable Only
~~~~~ Leave Tree Area Tags	----- Optional Construction	\\ Tracked Skidder/Shovel/Cable
~~~~~ Private w/ Boundary Tags	++++ Optional Reconstruction	==== Cable w/ Shovel Pre-Bunch
3 Stream Type	===== Required Reconstruction	RMZ/WMZ
* Stream Type Break	◆ Survey Monument	Gate
→ Streams	Wetland	
Leave Tree Areas (bounded w/ Leave Tree Area Tags)	Powerline	

TIMBER SALE MAP

SALE NAME:	SALMONSTEAD	REGION:	Olympic
AGREEMENT NO:	30-077358	COUNTY(S):	Clallam/Jefferson
TRUST(S):	Forest Board/Capitol		



Drawn By: M. Helms  
Date: June 1, 2005



TIMBER NOTICE OF SALE

SALE NAME: AIRSTREAM THINNING & CC

AGREEMENT NO: 30-077233

AUCTION:

October 27, 2005 starting at 10:00 a.m.,  
Pacific Cascade Region Office, Castle Rock, WA

COUNTY: Clark

SALE LOCATION:

Sale located approximately 9 miles east of Battle Ground, WA

PRODUCTS SOLD  
AND SALE AREA:

All timber, except leave trees as described in Schedule A, Bounded by the following:  
Timber sale boundary tags, the NE Berry Road, and L-1410 road in Unit #1; timber sale  
boundary tags and the L-1410 road in Unit #2; timber sale boundary tags and the L-1420  
road in Unit #3; all timber bounded by right-of-way boundary tags; all timber, except  
cedar, pre-existing down woody debris 36 inches in diameter and greater, leave trees  
tagged out with leave tree area tags and leave trees marked with blue paint, bounded by  
timber sale boundary tags and the L-1420 road in Units #4 and #5 on part(s) of Sections  
24, 25 and 26 all in Township 4 North, Range 3 East, W.M., containing 150 acres, more  
or less.

ESTIMATED SALE VOLUMES AND QUALITY:

Species	Avg DBH	Ring Count	Total MBF	Total Tons	Price \$/Ton	MBF by Grade								UT
						1P	2P	3P	SM	1S	2S	3S	4S	
Douglas fir	13	5	1,803	11,628	\$41.75						413	998	392	
Red alder	11.2		144	1,124	\$26.70							54	90	
Sale Total			1,947	12,752										

MINIMUM BID:

\$41.75/ton (est. value \$515,000.00)

BID METHOD:

Sealed Bids

PERFORMANCE  
SECURITY:

\$100,000.00

SALE TYPE:

Tonnage Scale

EXPIRATION DATE:

October 31, 2007

ALLOCATION:

Export Restricted

BIDDABLE SPECIES:

Douglas fir

BID DEPOSIT:

\$51,500.00 or Bid Bond. Said deposit shall constitute an opening bid at the appraised price.

HARVEST METHOD:

Cable harvesting equipment with tracked harvesting equipment (tracked skidder, shovel, forwarder, or processor) being restricted to slopes of 40% and less during dry soil conditions. All yarding corridors within Unit #5 will be marked by Purchaser and pre-approved by the Contract Administrator before harvesting. All skid trails shall be left in a plantable condition by ripping them to a depth of 12" and scattering light slash over the top of them in Units #4 and #5. 400 well distributed plantable spots per acre shall remain after harvest activities in Units #4 and #5, on slopes of 40% and less. This shall be done by piling brush and slash in piles no larger than 10 feet in diameter. Tracked yarding operations will not be permitted from October 1 to May 31 unless authorized in writing by the Contract Administrator. The use of unmuffled "jake brakes" will not be permitted on site. Purchaser shall follow the Harvesting Specifications listed in Schedule L.

ROADS:

48.77 stations of optional construction. 9.84 stations of optional reconstruction. 2.2 miles of pre-haul maintenance. 58.61 stations of road abandonment. Rock is available at no charge from the L-1420 pit in Sec.26, T4N, R3E, W.M. Spurs A through G are rock optional spurs in accordance with the road plan. Road construction will not be permitted from November 1 to April 30 unless authorized in writing by the Contract Administrator.

ACREAGE DETERMINATION

CRUISE METHOD:

Acres were determined by aerial photo dot grid and ground truthing in Units #1, #2, and #3, by GPS for Units #4 and #5. The volume was determined by DNRIMPS in Units #1, #2, #3 and by variable plot method in Units #4 and #5. The sale is estimated to be harvested by 20% cable and 80% tracked harvesting.

FEES:

\$25,800.00 is due on day of sale. \$1.37 per ton is due upon removal. These are in addition to the bid price.

SPECIAL REMARKS:

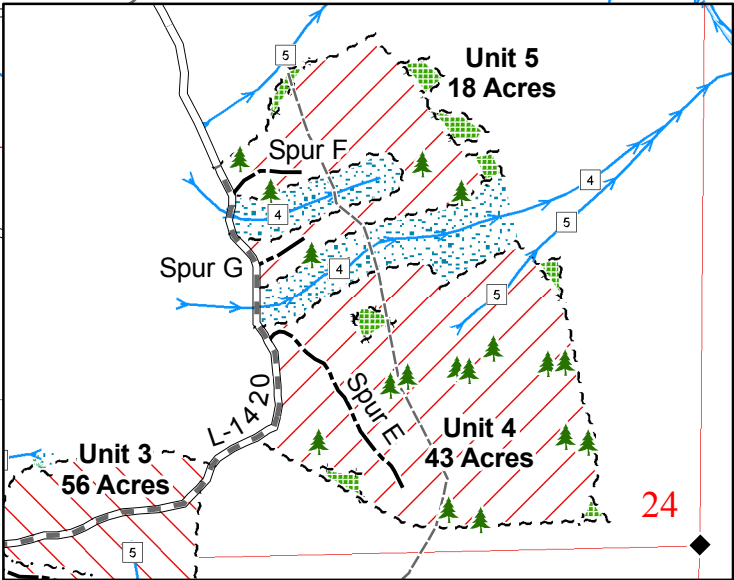
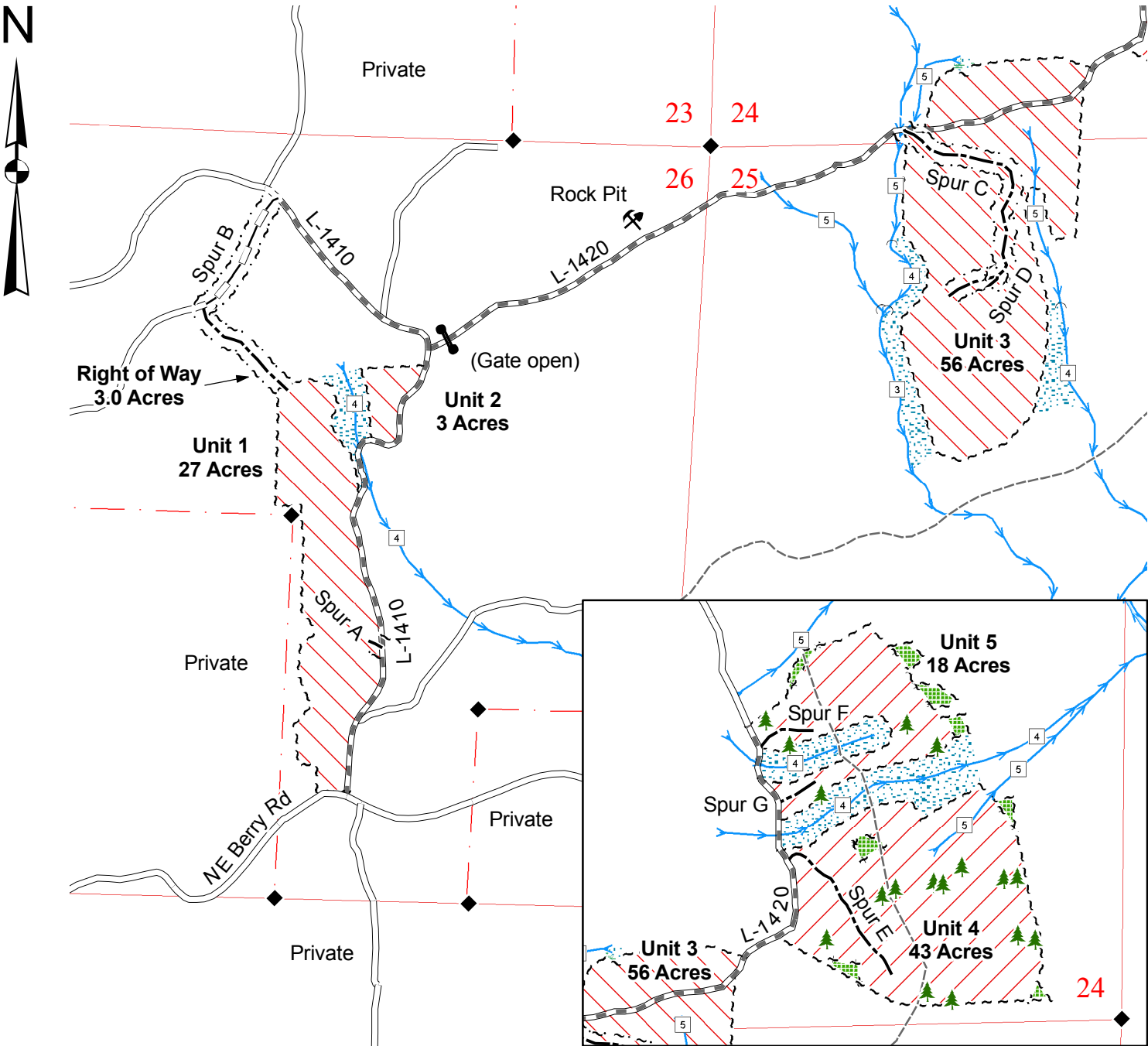
The bell's mountain trail must be left in a usable condition (passable by foot traffic) at the end of the last working day prior to weekends. The trail must be repaired to its original condition within 10 days after the completion of harvest activities. No tops, limbs, or other slash shall be left within 25 feet of the trail. Post closure signs at trailheads. No logging activities, including yarding and cutting, shall occur on weekends or state recognized holidays from June 1 to September 30.

TIMBER SALE MAP

SALE NAME: AIRSTREAM THINNING & CC  
AGREEMENT NO: 30-077233  
TRUST(S): Forest Board Transfer (01)

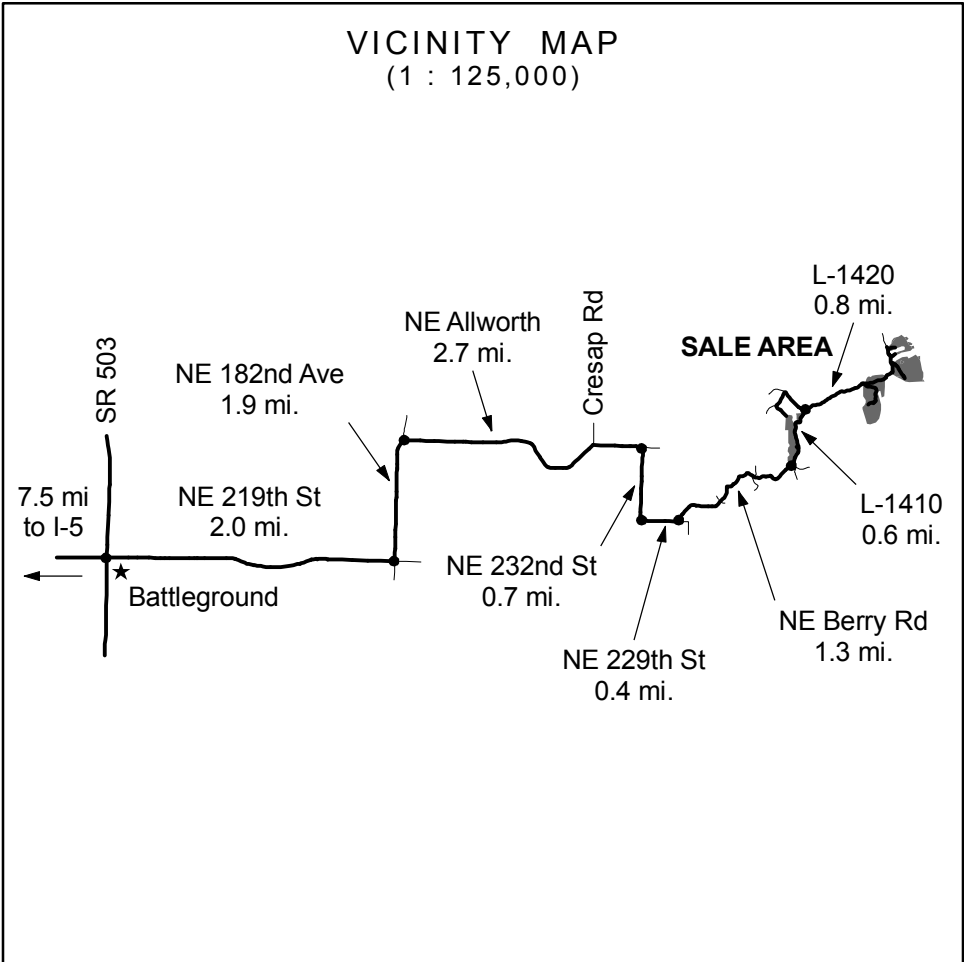
REGION: Pacific Cascade  
COUNTY(S): Clark

Township 04 North, Range 03 East, W.M.



**Legend**

- Regeneration Area (Red diagonal lines)
- Thinning Area (Red dashed lines)
- Leave Tree Area (Green stippling)
- RMZ (Blue stippling)
- WMZ (Blue stippling)
- Sale Boundary Tags (White) (Dashed line)
- Leave Tree Tags (Yellow) (Dashed line)
- Right of Way Boundary Tags (Orange) (Dashed line)
- Existing Roads (Solid line)
- Pre-haul Maintenance (Thick solid line)
- Optional Construction (Dashed line)
- Optional Reconstruction (Dashed line)
- Old Grade / Trail (Dashed line)
- Streams (Blue line with arrows)
- Water Type 1 - 5 (Box with number)
- Monumented Corner (Black diamond)
- Leave Trees (Blue Paint) (Green tree symbol)
- Existing Rock Pit (Rock symbol)
- Gate (Circle with crossbar)



Drawn By: Shawn B.  
Date: May 9, 2005  
Scale: 1" = 1000'  
Elevation: 1,200ft. - 1,900ft.

**TIMBER NOTICE OF SALE****SALE NAME:** *IN THE MIDDLE***AGREEMENT NO:** 30-071840**AUCTION:** October 25, 2005 starting at 10:00 a.m.,  
Southeast Region Office, Ellensburg, WA**COUNTY:** Kittitas**SALE LOCATION:** Sale located approximately 15 miles northeast of Cle Elum, WA

**PRODUCTS SOLD  
AND SALE AREA:** All timber NOT marked with blue paint bounded by white timber sale boundary tags on Unit #1, Unit #2 and Unit #3 and all timber bounded by orange right of way tags on part(s) of Sections 16 all in Township 21 North, Range 16 East, Sections 36 all in Township 21 North, Range 15 East, W.M., containing 183 acres, more or less.

**ESTIMATED SALE VOLUMES AND QUALITY:**

Species	Avg DBH	Ring Count	Total MBF	MBF by Grade					
				#1	#2	#3	#4	#5	#6
Douglas fir	13.3		1,168	585	327	257			
Ponderosa pine	12.7		448			271	176		
Grand fir	11.6		256			14	242		
Larch	11		3				3		
Sale Total			1,875						

**MINIMUM BID:** \$367,000.00**BID METHOD:** Sealed Bids

**PERFORMANCE  
SECURITY:** \$73,400.00

**SALE TYPE:** Lump Sum**EXPIRATION DATE:** September 30, 2007**ALLOCATION:** Export Restricted

**BID DEPOSIT:** \$36,700.00 or Bid Bond. Said deposit shall constitute an opening bid at the appraised price.

**HARVEST METHOD:** Rubber tired skidder or tractor no larger than a D-6 cat or equivalent. Falling and Yarding will not be permitted from November 1 to May 1 unless authorized in writing by the Contract Administrator in order to protect the soil from compaction and the water quality from degradation due to wet weather conditions.

**ROADS:** 23.45 stations of required construction. 70.40 stations of required reconstruction. 23.45 stations of required abandonment (Spurs 2 and 3). Prospective purchasers should review the road plan in detail. Purchaser must provide and apply 30 cubic yards of rock from a commercial source, to be applied on the county road approaches.. Road construction will not be permitted from November 1 to May 1 unless authorized in writing by the Contract Administrator in order to protect the road surface and subgrade from damage due to wet weather conditions. The hauling of forest products will not be permitted from November 1 to May 1 unless authorized in writing by the Contract Administrator in order to protect the road surface and subgrade from damage due to wet weather conditions.

**ACREAGE DETERMINATION**

**CRUISE METHOD:** Acres were determined using a GPS. Volume was cruised using a variable plot method and using 16' log grades.

**FEES:** \$24,800.00 is due on day of sale. \$9.00 per MBF is due upon removal. These are in addition to the bid price.

**SPECIAL REMARKS:** There is a locked gate on the road in to Unit #3. Contact the region office for information on how to access the gate. Purchaser must obtain county road approach permits for two roads. New construction and reconstruction on private land is bounded by yellow flagging. Timber in this area will be cut and placed as directed by the Contract Administrator as down woody debris on the private land.



TIMBER SALE MAP

Sale Name: In The Middle  
Agreement Number: 30-071840  
Trust(s): Common School

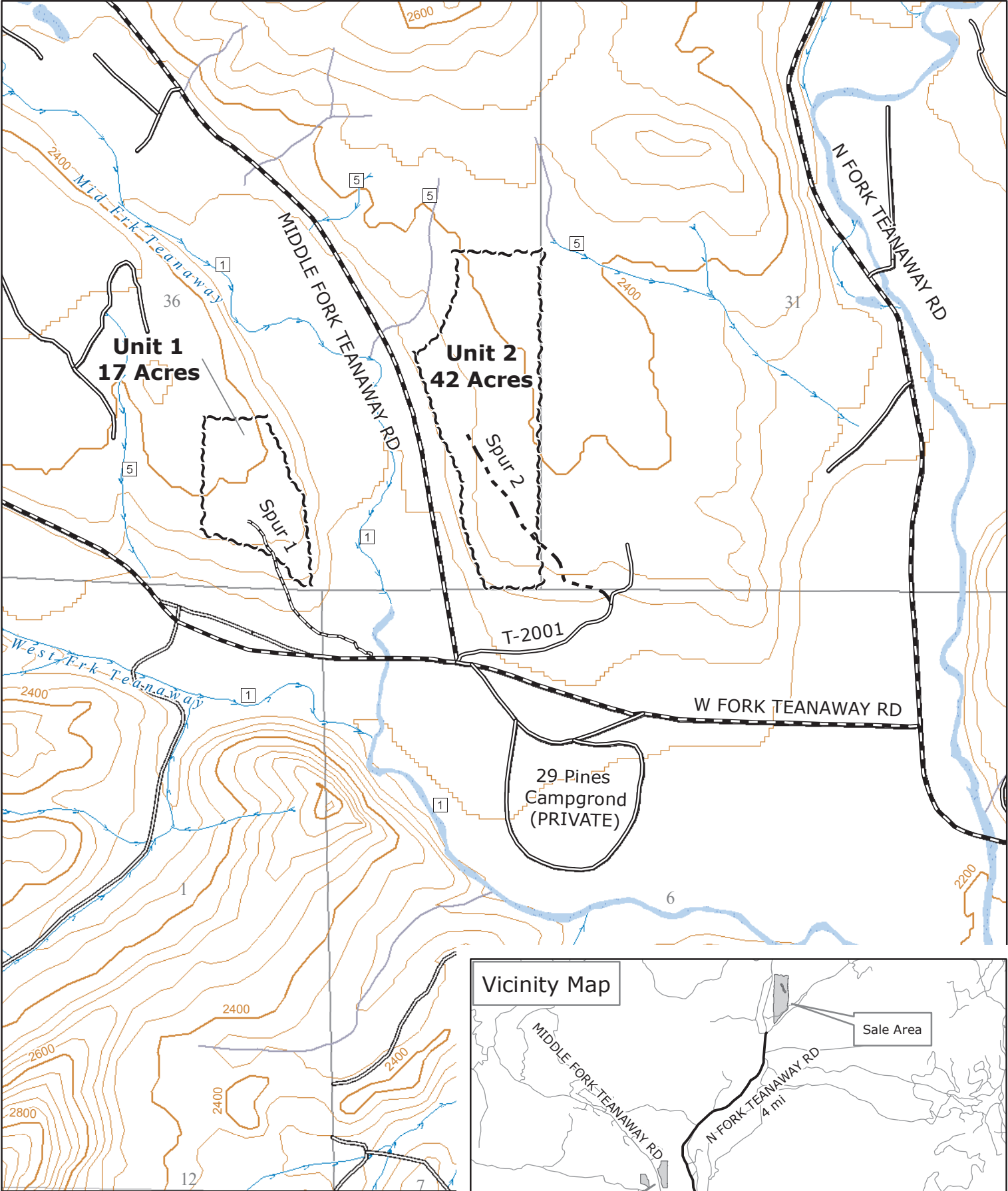
Region: Southeast  
County(s): Kittitas

T21R15E

T21R16E

T21R15E

T20R15E

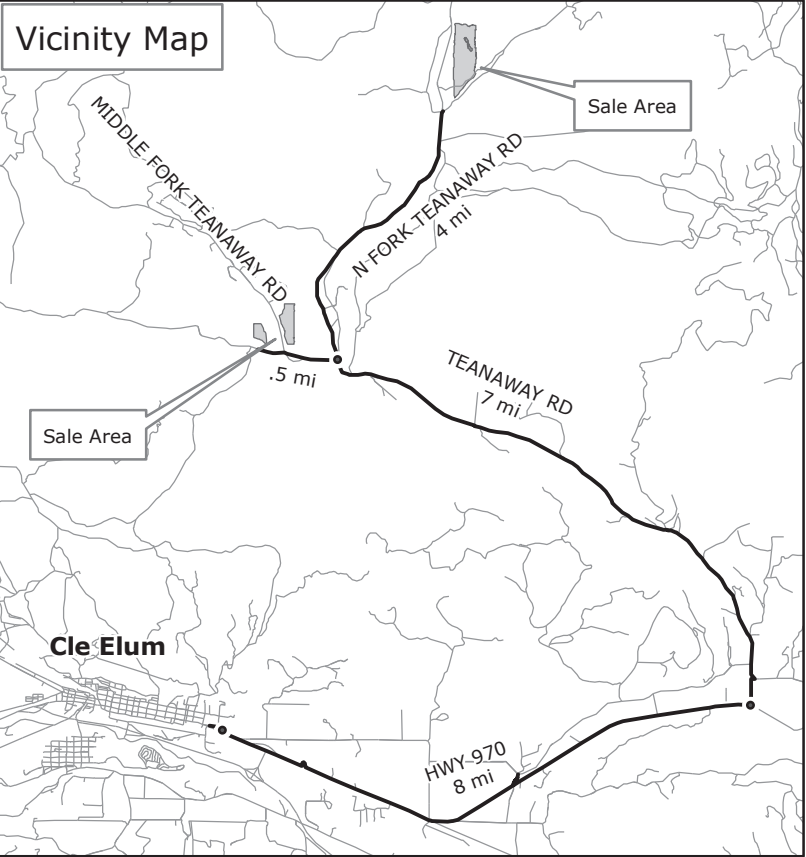


0 375 750 1,500  
Feet

1:12,000

- ~~~~~ Timber Sale Boundary
- == County Road
- == Existing Road
- - - Required Construction\*
- == Required Reconstruction\*
- - - Abandonment

\*Bounded by Right of Way Tags

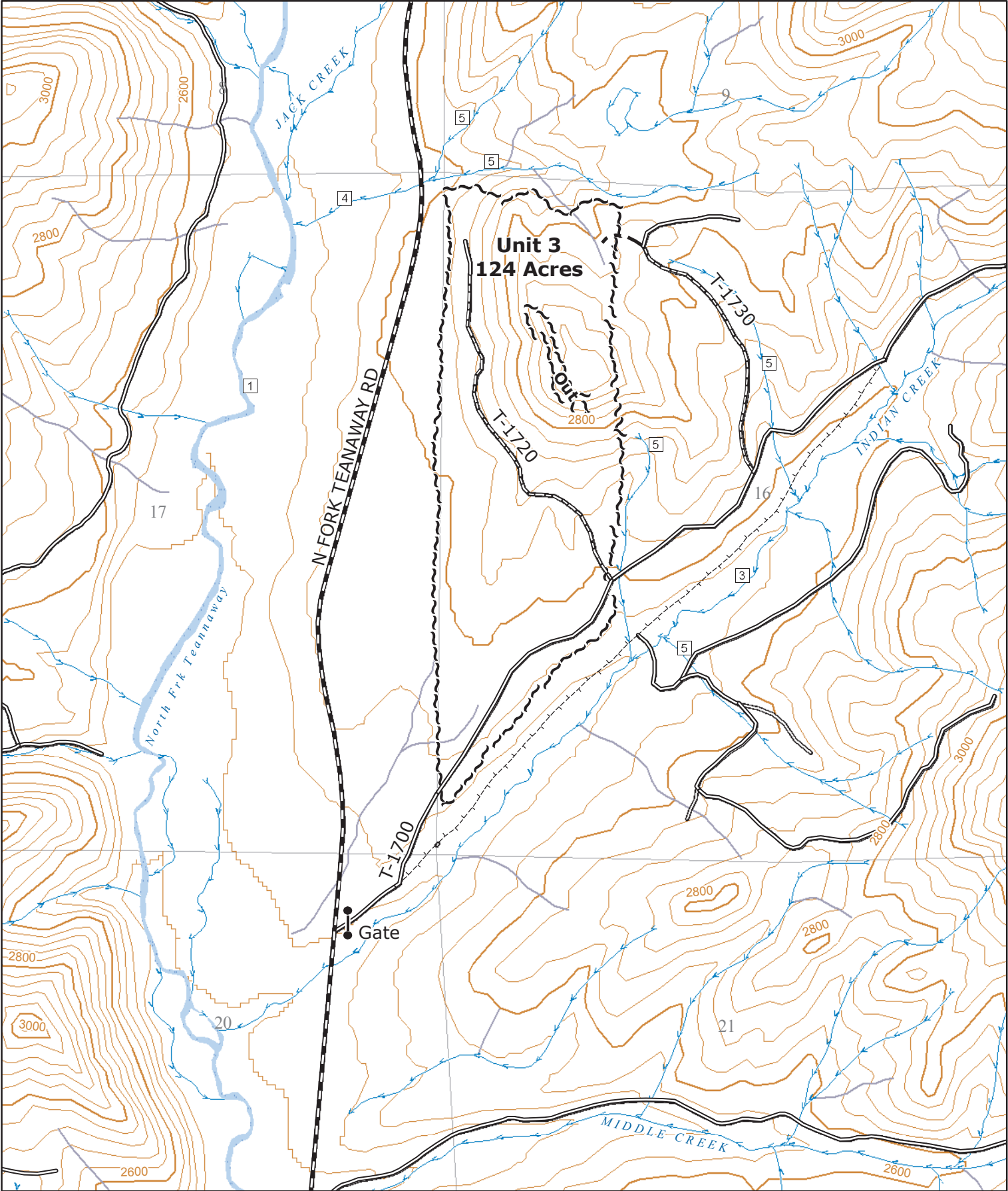


TIMBER SALE MAP

Sale Name: In The Middle  
Agreement Number: 30-071840  
Trust(s): Common School

Region: Southeast  
County(s): Kittitas

Township21 North, Range 16 East, W.M.



0 375 750 1,500  
Feet

1:12,000

- ~~~~~ Timber Sale Boundary
- == County Road
- Existing Road
- - - Required Construction\*
- - - Required Reconstruction\*
- - - Abandoned Road
- Gate

\*Bounded by Right of Way Tags



TIMBER NOTICE OF SALE

SALE NAME: SIR WINSTON THINNING

AGREEMENT NO: 30-077294

AUCTION:

October 27, 2005 starting at 10:00 a.m.,  
Pacific Cascade Region Office, Castle Rock, WA

COUNTY: Lewis

SALE LOCATION:

Sale located approximately 9 miles southwest of Mossyrock, WA

PRODUCTS SOLD  
AND SALE AREA:

All timber, except leave trees as described in Schedule A, bounded by the following:  
timber sale boundary tags, the W-1000, and Salmon Creek roads in Unit #1; timber sale  
boundary tags, the W-5000, and Longbell Road in Units #2, and #3; timber sale boundary  
tags in Unit #4; timber sale boundary tags, the Longbell Road, and the W-5090 road in  
Unit #5; all timber bounded by right-of-way boundary tags along the W-1010, W-1001,  
and W-1002 roads unless the road is not constructed and all other timber bounded by  
right-of-way boundary tags on part(s) of Sections 34, 35 and 36 all in Township 12  
North, Range 2 East, W.M., containing 290 acres, more or less.

ESTIMATED SALE VOLUMES AND QUALITY:

Species	Avg DBH	Ring Count	Total MBF	Total Tons	Price \$/Ton	MBF by Grade								UT
						1P	2P	3P	SM	1S	2S	3S	4S	
Douglas fir	9.7	6	1,549	9,631	\$33.05						33	470	1,046	
Red alder	9.4		98	711	\$8.55								98	
Cottonwood	9.9		1	7	\$8.55								1	
Sale Total			1,648	10,349										

MINIMUM BID:

\$33.05/ton (est. value \$342,000.00)

BID METHOD:

Sealed Bids

PERFORMANCE  
SECURITY:

\$68,400.00

SALE TYPE:

Tonnage Scale

EXPIRATION DATE:

October 31, 2007

ALLOCATION:

Export Restricted

BIDDABLE SPECIES:

Douglas fir

BID DEPOSIT:

\$34,200.00 or Bid Bond. Said deposit shall constitute an opening bid at the appraised price.

HARVEST METHOD:

Cable and ground based harvesting systems may be used. Ground based harvesting will not occur on slopes greater than 45% unless approved in writing by the Contract Administrator. A detailed felling and yarding plan shall be required prior to harvest activities and approved in writing by the Contract Administrator. All persons engaged in the felling and yarding of timber must receive certification in writing from the Contract Administrator. Locations of skid trails must be marked by Purchaser and approved by the Contract Administrator prior to the felling of timber. Purchaser shall follow the Harvesting Specifications as listed in Schedule L. Falling and Yarding will not be permitted from October 31 to May 1 unless authorized in writing by the Contract Administrator.

ROADS:

41.22 stations of required construction. 12.72 stations of required reconstruction. 27.65 stations of optional construction. 3.72 stations of optional reconstruction. 39.00 stations of pre-haul maintenance. 0.14 stations of road abandonment. 5.28 stations of road deactivation. Rock is available at no charge from the State's Salmon Creek Quarry located in Section 3, Township 11 North , Range 2 East, W.M. Right-of-way timber designated for removal to construct the W-1010 Road will not be cut unless the road is constructed. Road construction will not be permitted from September 30 to May 1 unless authorized in writing by the Contract Administrator.

ACREAGE DETERMINATION

CRUISE METHOD:

Acreage was determined using aerial photographs. Cruise was completed using variable plot cruise methods. Harvesting activities are estimated to be 100% tracked harvesting methods with a few seep pitches that may require cable pulling.

FEES:

\$21,840.00 is due on day of sale. \$1.43 per ton is due upon removal. These are in addition to the bid price.

SPECIAL REMARKS:

Purchaser must enter into a road approach permit with Lewis County (See Clause G-395.) Purchaser shall provide a written Extreme Hazard Abatement plan, for those areas along the County roads, that meets the requirements of WAC 332-24 prior to the beginning of logging operations. The right-of-way boundary tags on that portion of private land on the W-5095 road consists of no merchantable timber but marks the boundary for reconstruction.

TIMBER SALE MAP

SALE NAME:

SIR WINSTON THINNING

AGREEMENT NO:

30-077294

TRUST(S):

State Forest Board Purchase (02) & Common School (03)

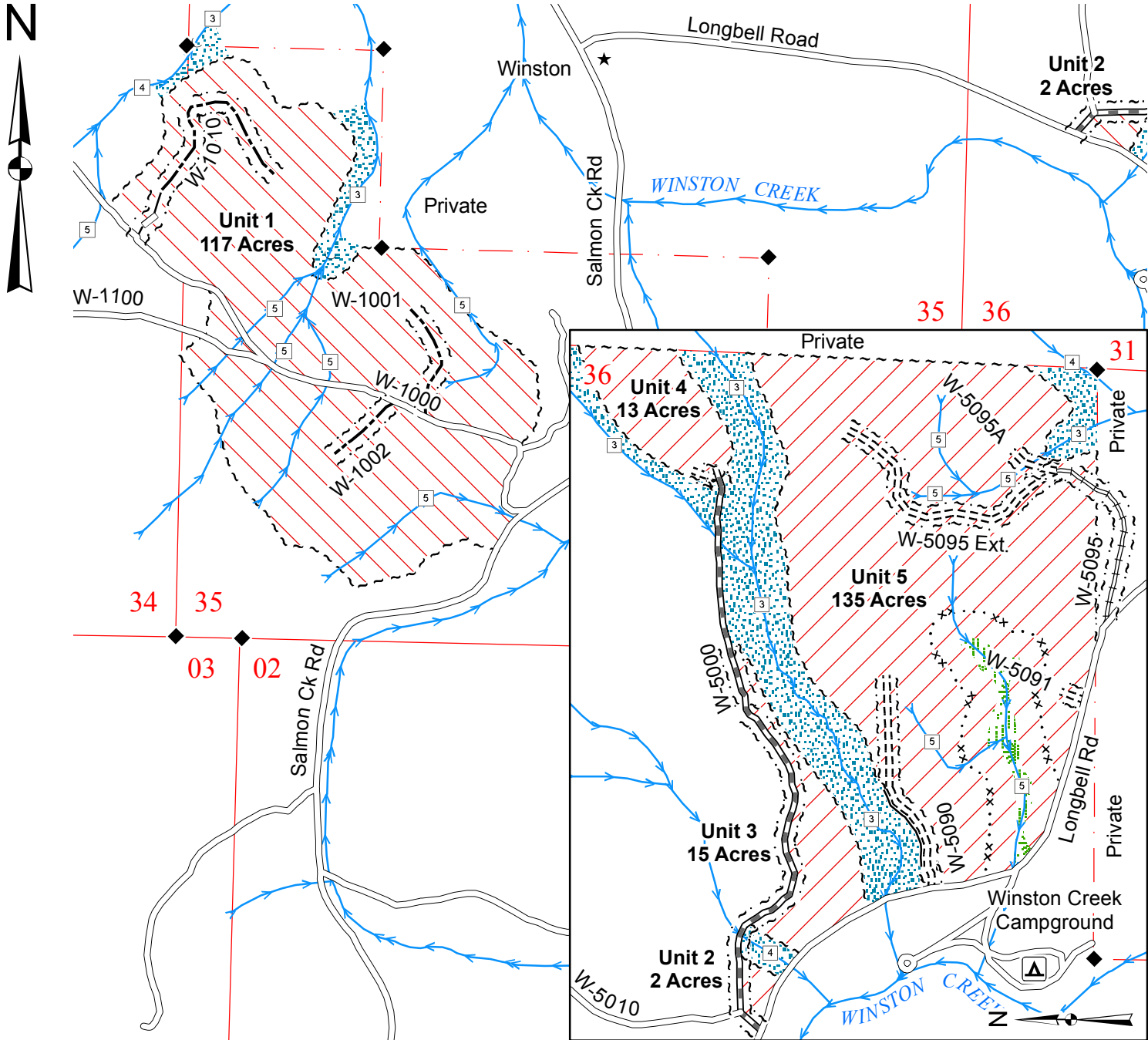
REGION:

Pacific Cascade

COUNTY(S):

Lewis

Township 12 North, Range 02 East, W.M.



Legend

Thinning Area

RMZ

Forested Wetland

Sale Boundary Tags (White)

Special Management Tags (Blue)

Right of Way Boundary Tags (Orange)

Existing Roads

Pre-haul Maintenance

Required Construction

Required Reconstruction

Optional Construction

Optional Reconstruction

Streams

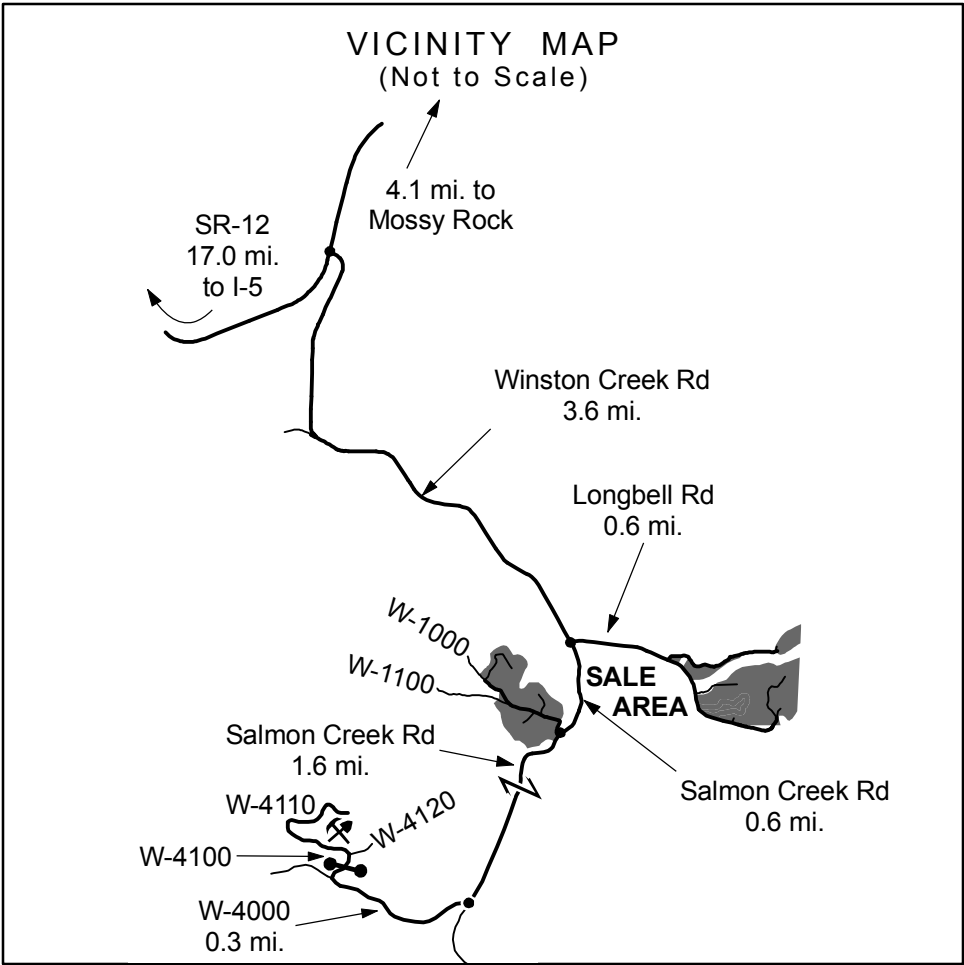
Water Type 1 - 5

Monumented Corner

Existing Rock Pit

Gate (786 Master)

Drawn By: Shawn B.  
Date: July 28, 2005  
Scale: 1" = 1000'  
Elevation: 640ft. - 1,020ft.





TIMBER NOTICE OF SALE

SALE NAME: NO SWEAT

AGREEMENT NO: 30-077369

AUCTION:

October 25, 2005 starting at 10:00 a.m.,  
Northeast Region Office, Colville, WA

COUNTY: Okanogan

SALE LOCATION:

Sale located approximately 14 miles west of Okanogan, WA in Okanogan County

PRODUCTS SOLD  
AND SALE AREA:

All green Douglas fir, western larch, lodgepole pine, and Engelmann spruce greater than 6 inches at breast height and all green ponderosa pine greater than 8 inches at breast height not banded with blue paint in Units #1, #2, #3, #4, #5, #6, #9, #10, and #11 bounded by white Timber Sale Boundary Tags. All green Douglas fir, western larch, lodgepole pine, and Engelmann spruce greater than 6 inches at breast height and all green ponderosa pine greater than 8 inches at breast height not banded with red paint in Units #7 and #12 bounded by white Timber Sale Boundary Tags. All green Douglas fir, western larch, lodgepole pine, and Engelmann spruce greater than 6 inches at breast height and all green ponderosa pine greater than 8 inches at breast height not banded with orange paint in Unit #8 bounded by white Timber Sale Boundary Tags on part(s) of Sections 2, 3, 10 and 11 all in Township 33 North, Range 24 East, Sections 34 and 35 all in Township 34 North, Range 24 East, W.M., containing 619 acres, more or less.

ESTIMATED SALE VOLUMES AND QUALITY:

Species	Avg DBH	Ring Count	Total MBF	MBF by Grade					
				#1	#2	#3	#4	#5	#6
Douglas fir	10.7		2,461	624	1,718	119			
Ponderosa pine	13.9		2,034			1,492	543		
4-5" top (all spp.)			612						612
Larch	10		331			17	315		
Lodgepole	10.1		50						50
Sale Total			5,488						

MINIMUM BID:

\$1,184,000.00

BID METHOD:

Sealed Bids

PERFORMANCE  
SECURITY:

\$100,000.00

SALE TYPE:

Lump Sum

EXPIRATION DATE:

November 30, 2007

ALLOCATION:

Export Restricted

BID DEPOSIT:

\$118,400.00 or Bid Bond. Said deposit shall constitute an opening bid at the appraised price.

HARVEST METHOD:

Forwarder, Rubber tired skidder and Track skidder. Falling and Yarding will not be permitted from March 1 to April 30 unless authorized in writing by the Contract Administrator due to spring breakup.

ROADS:

23.00 stations of required construction. 6.59 stations of required reconstruction. 7.00 stations of optional construction. 10.30 stations of optional reconstruction. 17.10 stations of road abandonment. 288.50 stations of pre-haul maintenance. Road construction will not be permitted from November 15 to April 30 unless authorized in writing by the Contract Administrator due to snow cover and spring breakup. The hauling of forest products will not be permitted from March 1 to April 30 unless authorized in writing by the Contract Administrator due to spring breakup.

ACREAGE DETERMINATION  
CRUISE METHOD:

Acreage determined using GPS methods. Acreage shown above is net harvest acres in harvest units. All species, except ponderosa pine, 6.0 - 17.5 inches dbh cruised to a 4.0 inch dib top. All species, except ponderosa pine, 17.6 inches dbh and greater cruised to 40% of dob at 16 feet. Ponderosa pine 8.0 - 16.5 inches dbh cruised to a 5.5 inch dib top. Ponderosa pine 16.6 inches dbh and greater cruised to 40% of dob at 16 feet. 4 to 5 inch top (all spp), except ponderosa pine, cruised to between 4.0 and 5.4 inches dib top.

FEES:

\$72,743.00 is due on day of sale. \$9.00 per MBF is due upon removal. These are in addition to the bid price.

SPECIAL REMARKS:

A fish passage barrier will be removed and replaced with a bridge on this timber sale. Bridge specifications can be found in the road plan. There is a small amount of Engelmann spruce included with this timber sale, however, none were tallied in inventory plots and therefore are not shown in the advertised volumes above.

Timber Sale Map

SALE NAME: No Sweat  
AGREEMENT NO.: 30-077369  
TRUST(S): Indemnity

REGION: NORTHEAST  
COUNTY: Okanogan

Township 33 North, Range 24 East, W. M.  
Township 34 North, Range 24 East, W. M.

Ground Skidding

Timber Sale Boundary Tags

Existing Roads

New Construction

Required Reconstruction

Optional Reconstruction

Prehaul Maintenance

Optional Construction

Fence

Stream

Section/Property Line



Scale: 1" = 1000'  
Drawn By: S. M.  
DATE: 07/19/2005

Note: Road details can  
Be found in the  
Road plan in  
The timber sale  
Contract.

Acres = Net Acres

Elevation = 2800' - 3840'

Vicinity Map  
(not to scale)

1.9 Mi.

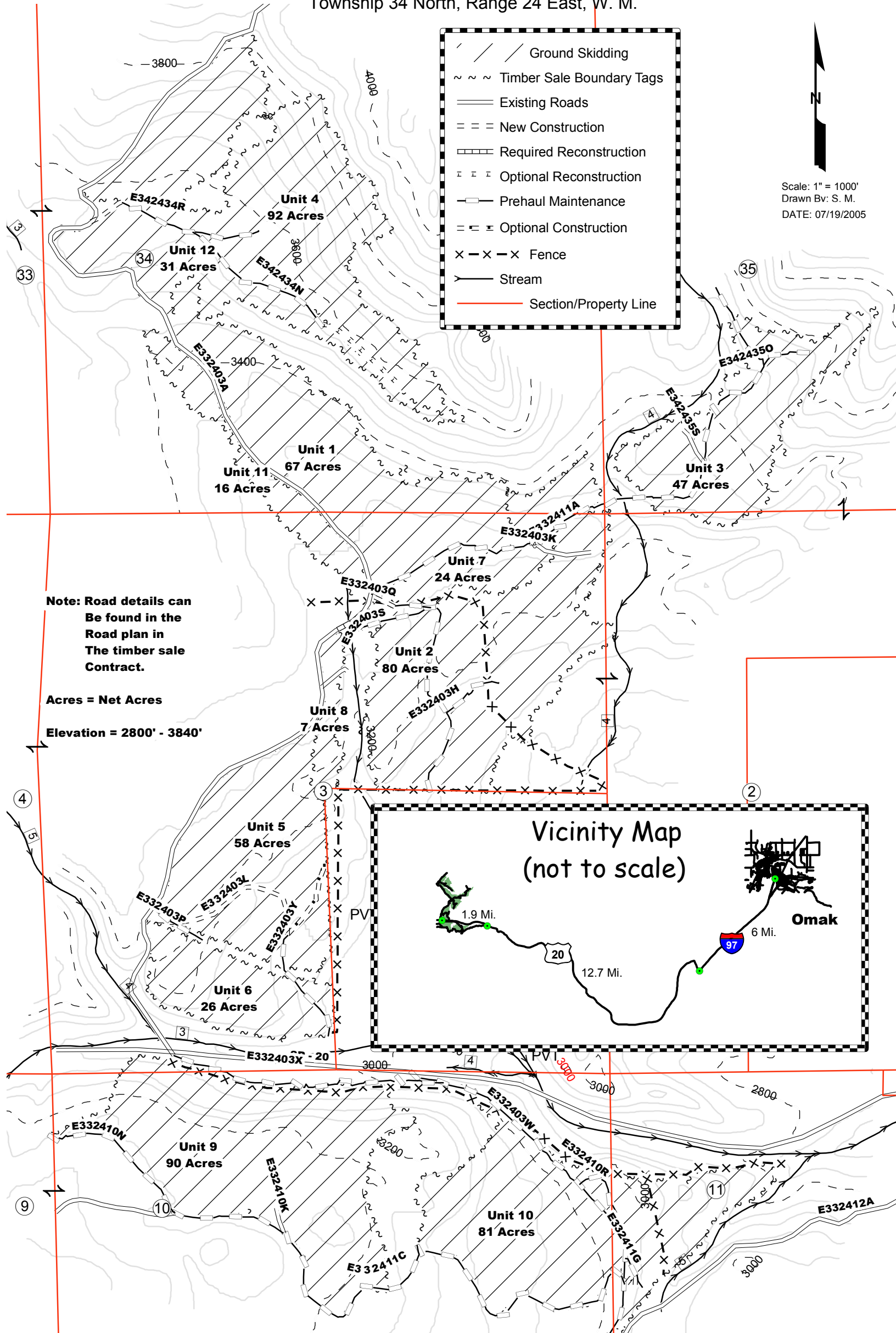
6 Mi.

12.7 Mi.

20

97

Omak



TIMBER NOTICE OF SALE

SALE NAME: SWAN

AGREEMENT NO: 30-077239

AUCTION:October 27, 2005 starting at 10:00 a.m.,  
Pacific Cascade Region Office, Castle Rock, WA

COUNTY:Thurston, Grays Harbor

SALE LOCATION: Sale located approximately 11 miles northeast of Malone, WA.

PRODUCTS SOLD AND SALE AREA: All timber, except trees tagged out with leave tree area boundary tags, down timber existing prior to the day of sale, snags, and pre-existing stumps, bounded by the following: timber sale boundary tags, the A-4200 road, and reprod in Unit #1; timber sale boundary tags, and reprod in Unit #2; timber sale boundary tags, the B-4100, B-4110 roads and reprod in Unit #3; all timber bounded by timber sale boundary tags and the B-3020 road in Unit #4 on part(s) of Sections 4 all in Township 17 North, Range 4 West, Sections 28, 31, 32 and 33 all in Township 18 North, Range 4 West, W.M., containing 149 acres, more or less.

ESTIMATED SALE VOLUMES AND QUALITY:

Species	Avg DBH	Ring Count	Total MBF	MBF by Grade								UT
				1P	2P	3P	SM	1S	2S	3S	4S	
Douglas fir	16.7	7	1,700						690	789	221	
Hemlock	19.1	7	947						484	379	84	
Red alder	12.4		746						29	391	326	
Red cedar	17.5		37						2	21	14	
Spruce	25.8		23						10	8	5	
Maple	14		1								1	
Sale Total			3,454									

MINIMUM BID:\$1,001,000.00

BID METHOD:Sealed Bids

PERFORMANCE SECURITY:\$100,000.00

SALE TYPE:Lump Sum

EXPIRATION DATE:October 31, 2007

ALLOCATION:Export Restricted

BID DEPOSIT: \$100,100.00 or Bid Bond. Said deposit shall constitute an opening bid at the appraised price.

HARVEST METHOD: Cable and shovel logging equipment may be used. Lead end suspension required on all cable settings and full suspension is required on slopes greater than 60%. Shovel logging will not be permitted on slopes over 40% unless authorized in writing by the Contract Administrator. Landing debris shall be piled as directed by the Contract Administrator. Any and/or all operations may be temporarily suspended when, in the opinion of the Contract Administrator, there is the possibility of sediment delivery to flowing water tributary to any fish bearing stream. To reduce damage to the earth, the Contract Administrator may require water bars to be constructed and grass seed to be placed on exposed soils. All stems greater than 1-inch must be felled over entire sale area. Purchaser shall follow the Harvesting Specifications as listed in Schedule L. Yarding will not be permitted from September 30 to May 1 unless authorized in writing by the Contract Administrator.

ROADS: 67.04 stations of optional construction. Rock is available at no charge from the North Rim Quarry in Sec 32, Twn 18N, Rng 04W, W.M, and the Too Thin Quarry in Sec 04, Twn 17N, Rng 04W, W.M. All roads constructed shall be deactivated according to the Road Plan. Road construction will not be permitted from September 30 to May 1 unless authorized in writing by the Contract Administrator. The hauling of forest products will not be permitted from October 1 to May 1 unless authorized in writing by the Contract Administrator.

ACREAGE DETERMINATION

CRUISE METHOD: The sale acres were determined by GPS and traverse. The sale area was cruised using a variable plot cruise method. Harvesting activities are estimated to be approximately 66% shovel and 34% cable harvesting.

FEES: \$45,770.00 is due on day of sale. \$9.00 per MBF is due upon removal. These are in addition to the bid price.

SPECIAL REMARKS: Purchaser assumes responsibility for any county road use permits and for all costs associated with permits and extra maintenance or repair levied by a county for any county road used by the Purchaser. A detailed felling and yarding plan shall be required prior to any harvest activities and approved in writing by the Contract Administrator.



TIMBER SALE MAP

SALE NAME: SWAN

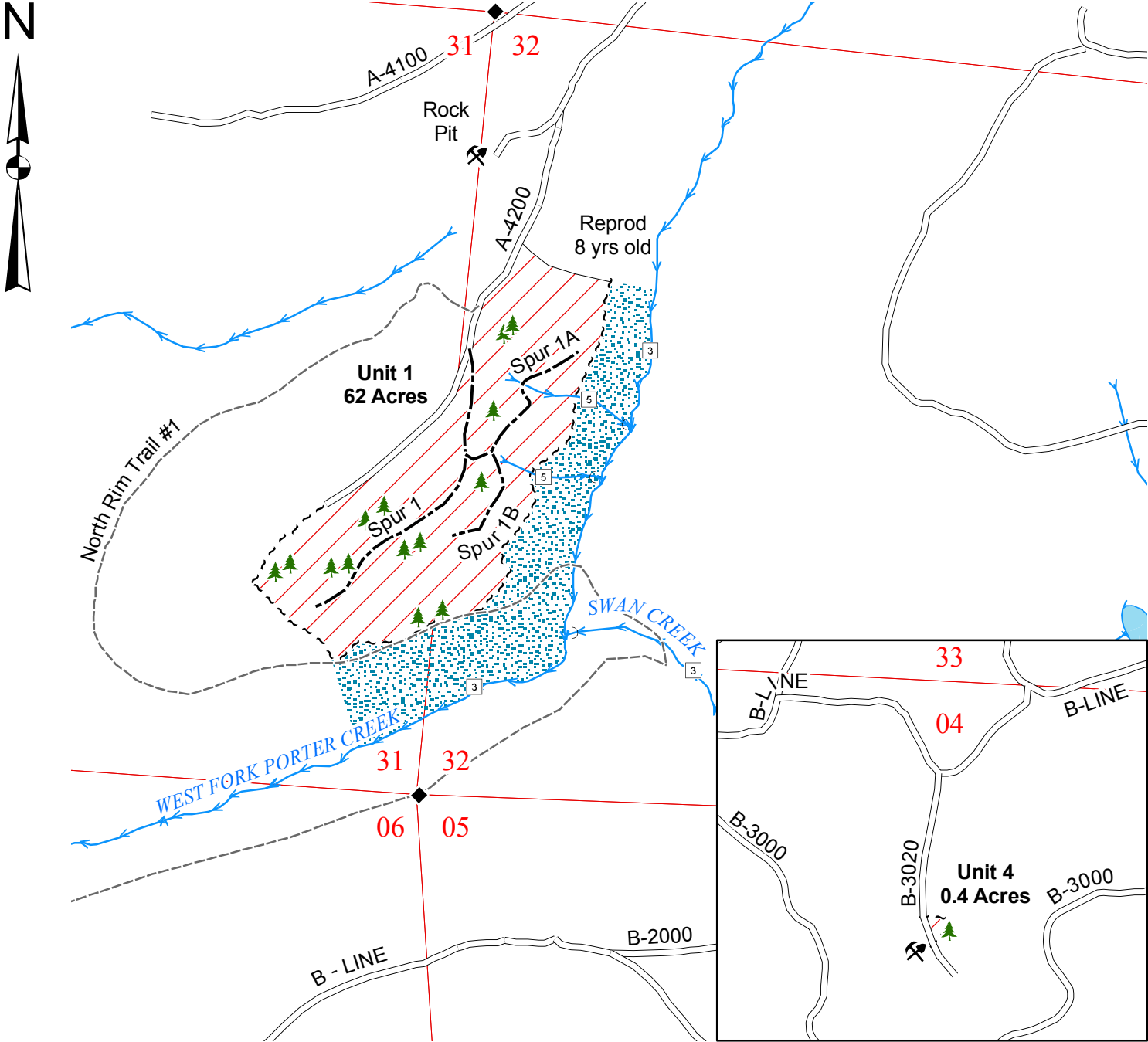
AGREEMENT NO: 30-077239

TRUST(S): Common School (03) & IFLR (42)

REGION: Pacific Cascade

COUNTY(S): Grays Harbor & Thurston

Township 18 North, Range 04 West, & T17N, R04W, W.M.



Legend

Sale Area

Leave Tree Area

RMZ

Sale Boundary Tags (White)

Leave Tree Tags (Yellow)

Existing Roads

Optional Construction

Old Grade / Trail

Streams

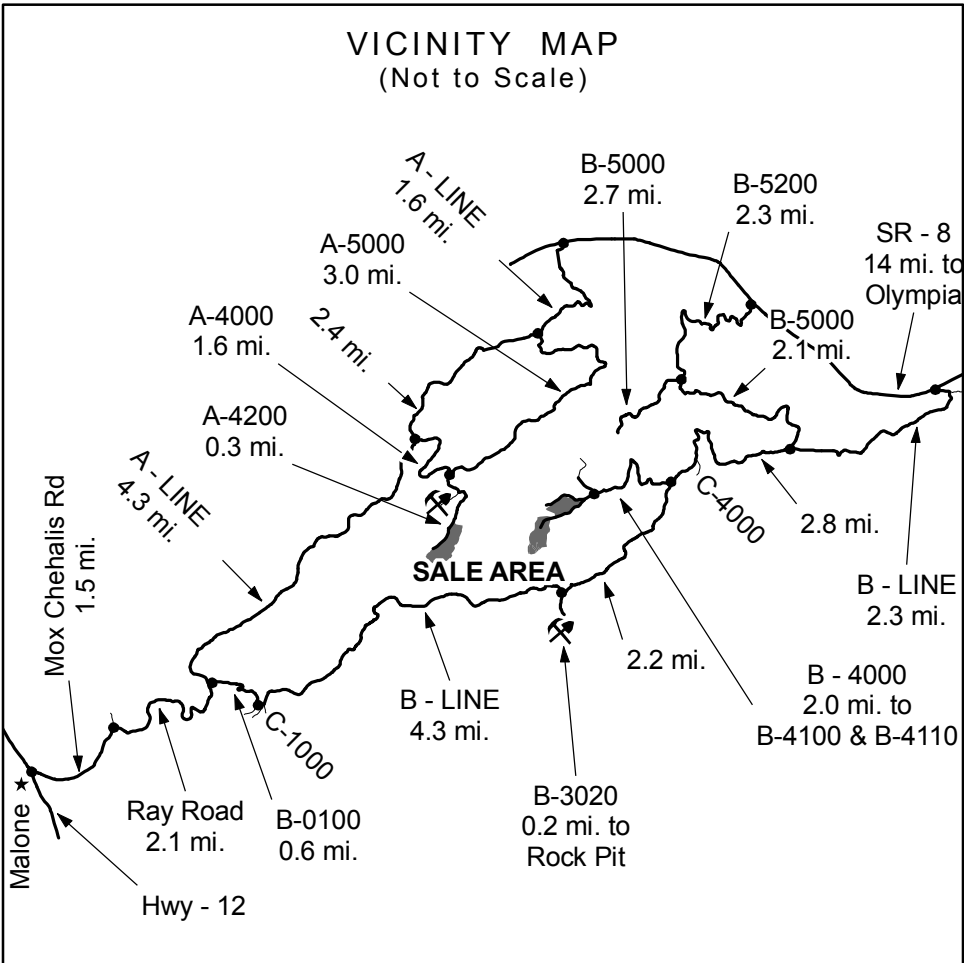
Water Type 1 - 5

Monumented Corner

Leave Trees (Yellow Tags)

Existing Rock Pit

Gate



Drawn By: Shawn B.

Date: March 23, 2005

Scale: 1" = 1000'

Elevation: 720ft. - 1,440ft.

TIMBER SALE MAP

SALE NAME: SWAN

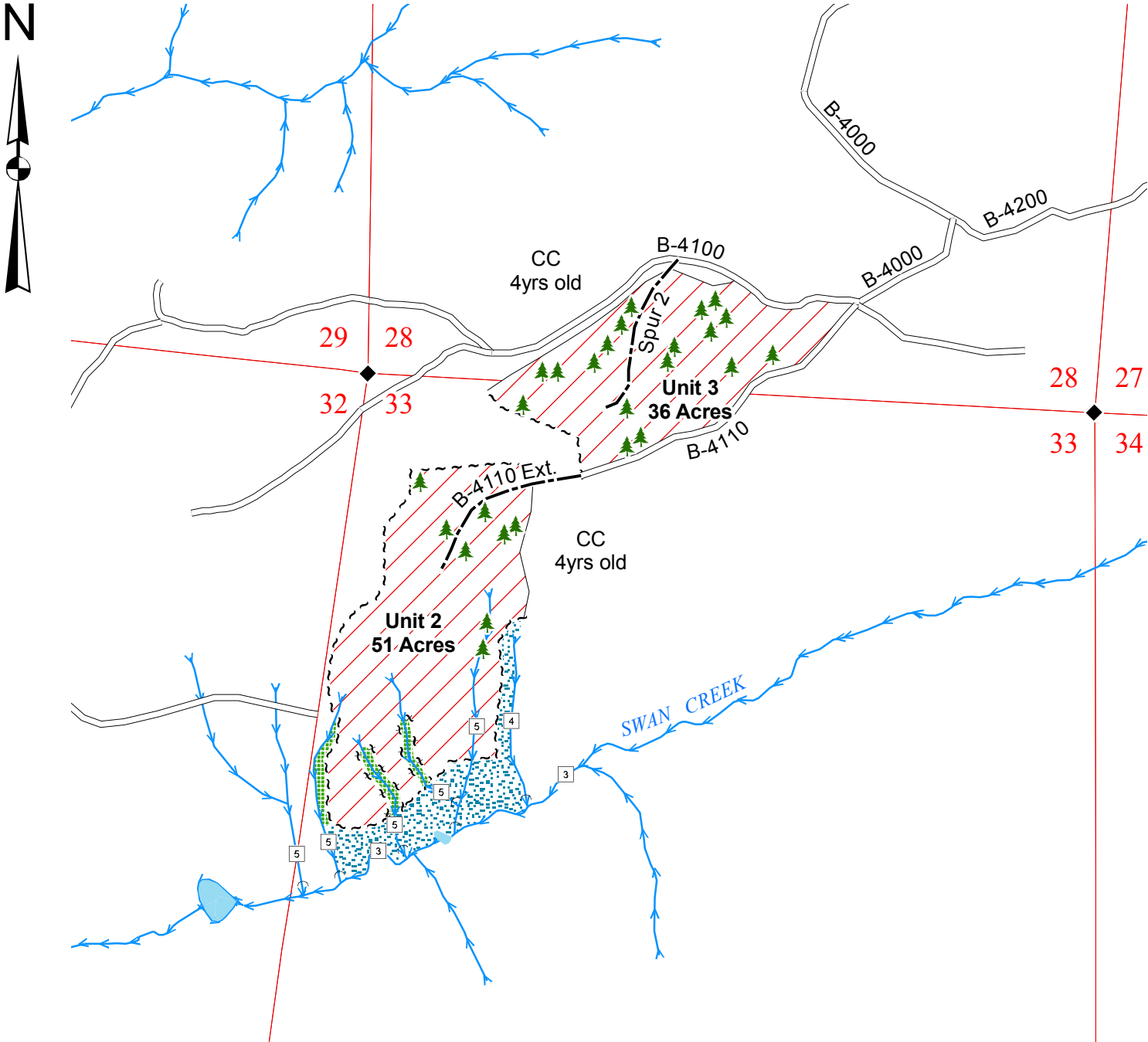
AGREEMENT NO: 30-077239

TRUST(S): Common School (03) & IFLR (42)

REGION: Pacific Cascade

COUNTY(S): Grays Harbor & Thurston

Township 18 North, Range 04 West, & T17N, R04W, W.M.



Legend

Sale Area

Leave Tree Area

RMZ

Sale Boundary Tags (White)

Leave Tree Tags (Yellow)

Existing Roads

Optional Construction

Old Grade / Trail

Streams

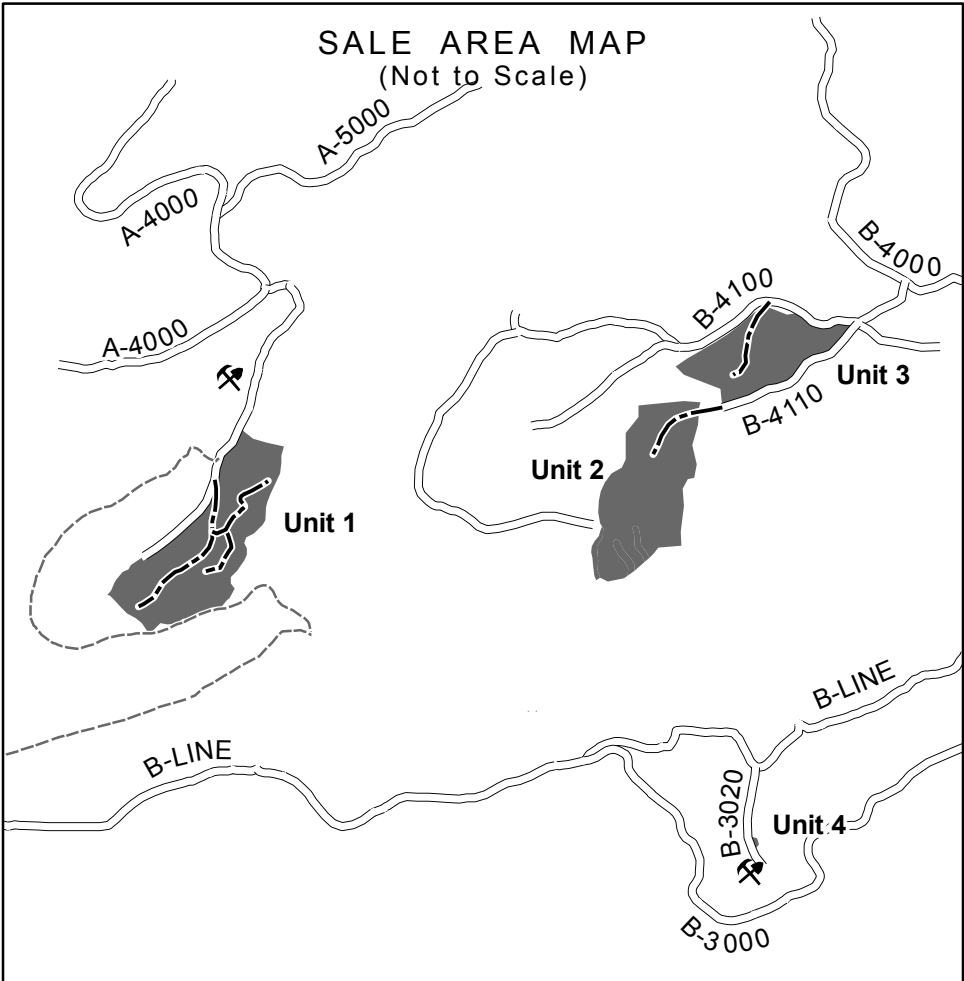
Water Type 1 - 5

Monumented Corner

Leave Trees (Yellow Tags)

Existing Rock Pit

Gate



Drawn By: Shawn B.

Date: March 23, 2005

Scale: 1" = 1000'

Elevation: 720ft. - 1,440ft.

TIMBER NOTICE OF SALE

SALE NAME: D-300 THINNING

AGREEMENT NO: 30-077343

AUCTION:October 25, 2005 starting at 10:00 a.m.,  
Olympic Region Office, Forks, WA

COUNTY: Clallam

SALE LOCATION: Sale located approximately 8 miles northwest of Forks, WA

PRODUCTS SOLD  
AND SALE AREA: All timber bounded by timber sale boundary tags and property lines, as defined in Schedule B, except leave trees as defined in Schedule A in Unit #1 and Unit #3; all timber bounded by timber sale boundary tags, a property line, logged areas and the SR110 (LaPush Road), as defined in Schedule B, except leave trees as defined in Schedule A in Unit #2; on part(s) of Sections 21 all in Township 28 North, Range 14 West, W.M., containing 46 acres, more or less.

ESTIMATED SALE VOLUMES AND QUALITY:

Species	Avg DBH	Ring Count	Total MBF	Total Tons	Price \$/Ton	MBF by Grade								UT
						1P	2P	3P	SM	1S	2S	3S	4S	
Hemlock			167	1,078	\$23.40						21	104	42	
Douglas fir			145	1,076	\$39.85						6	116	23	
Sale Total			312	2,154										

MINIMUM BID:\$39.85/ton (est. value \$68,000.00)

BID METHOD:Sealed Bids

PERFORMANCE  
SECURITY:\$13,600.00

SALE TYPE:Tonnage Scale

EXPIRATION DATE:October 31, 2006

ALLOCATION:Export Restricted

BIDDABLE SPECIES: Douglas fir

BID DEPOSIT: \$6,800.00 or Bid Bond. Said deposit shall constitute an opening bid at the appraised price.

HARVEST METHOD: Processor and Forwarder methods. No required removals on grounds over 35%. No equipment on slopes over 15% in wet weather or wet soil conditions.

ROADS: 1.79 stations of optional construction. 9.36 stations of optional reconstruction. 9.19 stations of optional pre-haul maintenance. Purchaser maintenance on all roads used. If Purchaser elects not to use the D-300 road for haul, Unit #1 timber must be forwarded using the old D-300 grade only. Rock haul shall not be permitted from November 1 to April 30. Road construction will not be permitted from November 1 to April 30 unless authorized in writing by the Contract Administrator.

ACREAGE DETERMINATION

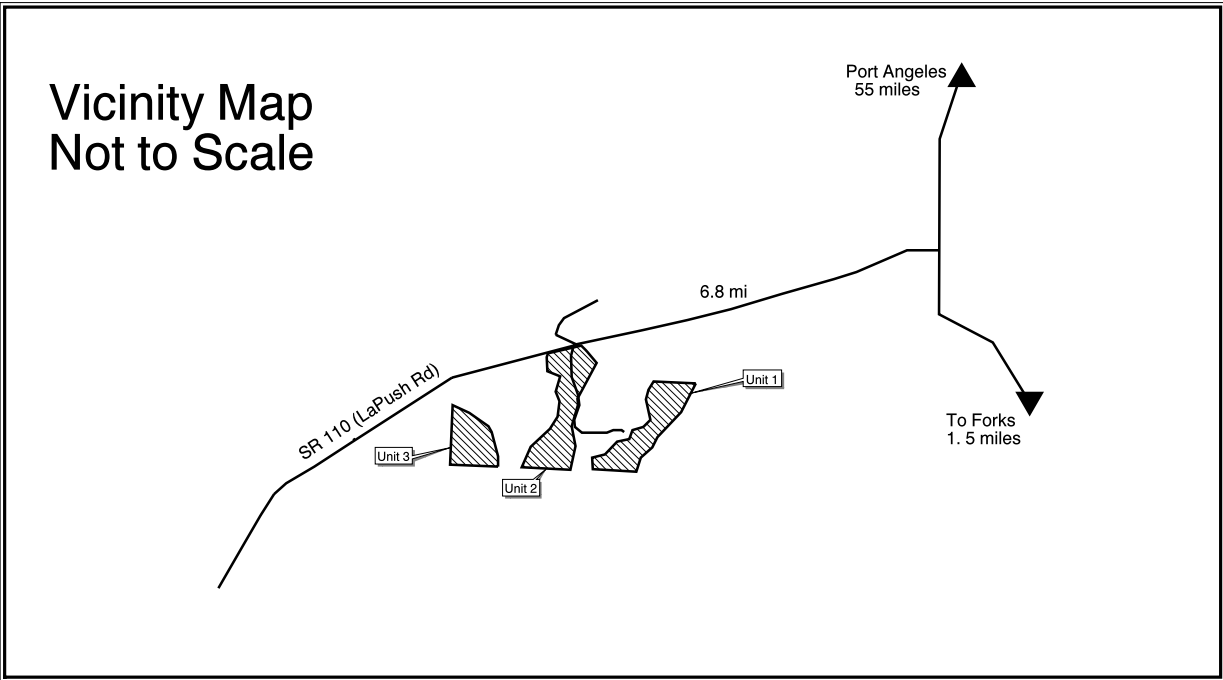
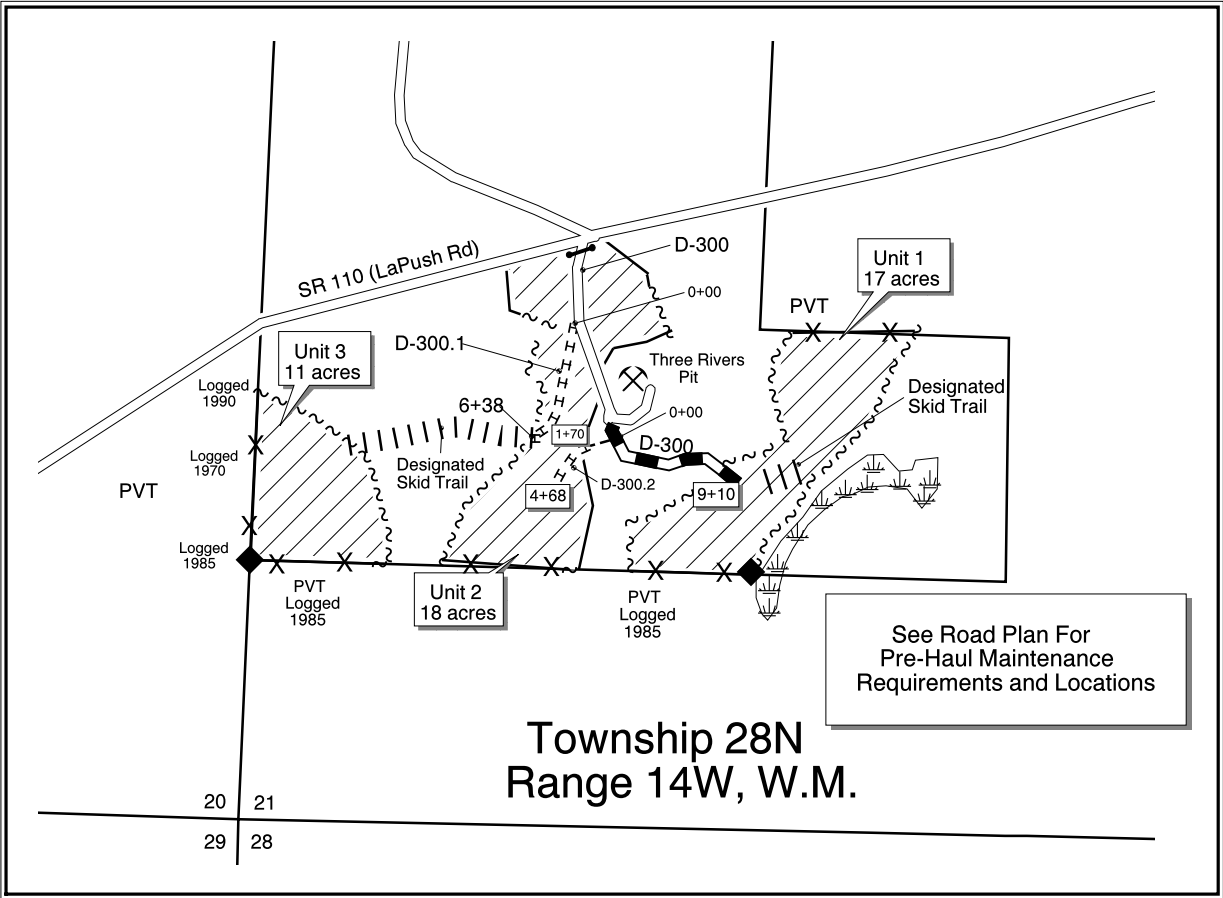
CRUISE METHOD: Units were 100% photo traversed.

FEES: \$4,134.00 is due on day of sale. \$1.02 per ton is due upon removal. These are in addition to the bid price.

SPECIAL REMARKS: Sale is located behind a locked gate. Contact the Olympic Region's Dispatch Center to obtain a AA-1 key. Slash within 100 feet of SR 110 (LaPush Road) shall be moved a minimum of 100 feet from the road and placed in dirt free piles in accordance with Schedule D (Slash Piling Specifications).

TIMBER SALE MAP

SALE NAME:	D-300 THINNING	REGION:	Olympic
AGREEMENT NO:	30-077343	COUNTY(S):	Clallam
TRUST(S):	Forest Board Transfer		



Drawn By: M. Helms  
Date: May 12, 2005  
Scale: 1" = 1000'



Elevation: 0 - 500'

Legend

- |       |                           |           |                               |
|-------|---------------------------|-----------|-------------------------------|
| ~~~~~ | Timber Sale Boundary Tags | =====     | Existing Road                 |
| X—X   | Property Line             | -----     | Optional Construction         |
| ////  | Processor/Forwarder       | ± ± ± ± ± | Optional Reconstruction       |
| ◆     | Survey Monument           |           | Designated Skid Trail         |
| ⊗     | Rock Pit                  | ▬▬▬       | Optional Pre-Haul Maintenance |
| ⏟     | Wetland                   | ●—●       | Existing Gate                 |



TIMBER NOTICE OF SALE

SALE NAME: FOX MOUNTAIN

AGREEMENT NO: 30-076764

AUCTION:

October 25, 2005 starting at 10:00 a.m.,  
Northeast Region Office, Colville, WA

COUNTY: Okanogan

SALE LOCATION:

Sale located approximately 9 miles west of Okanogan, WA in Okanogan County

PRODUCTS SOLD  
AND SALE AREA:

All green conifer species not banded with blue paint in Units #1 and #2 bounded by white  
Timber Sale Boundary Tags with red ribbon on part(s) of Sections 19 and 20 all in  
Township 33 North, Range 25 East, W.M., containing 74 acres, more or less.

ESTIMATED SALE VOLUMES AND QUALITY:

Species	Avg DBH	Ring Count	Total MBF	MBF by Grade					
				#1	#2	#3	#4	#5	#6
Ponderosa pine	14.4		497			333	160	4	
Douglas fir	14.4		137	32	100	5			
4-5" top (all spp.)			12						12
Sale Total			646						

MINIMUM BID:

\$125,000.00

BID METHOD:

Sealed Bids

PERFORMANCE  
SECURITY:

\$25,000.00

SALE TYPE:

Lump Sum

EXPIRATION DATE:

June 30, 2007

ALLOCATION:

Export Restricted

BID DEPOSIT:

\$12,500.00 or Bid Bond. Said deposit shall constitute an opening bid at the appraised price.

HARVEST METHOD:

Forwarder, Rubber tired skidder and Track skidder. Falling and Yarding will not be permitted from March 1 to April 30 unless authorized in writing by the Contract Administrator due to spring breakup.

ROADS:

4.40 stations of required construction. 23.85 stations of required reconstruction. 4.85 stations of optional construction. 78.15 stations of pre-haul maintenance required. 6.75 stations of road deactivation required. Road construction will not be permitted from November 15 to April 30 unless authorized in writing by the Contract Administrator due to snow cover and spring breakup. The hauling of forest products will not be permitted from March 1 to April 30 unless authorized in writing by the Contract Administrator due to spring breakup.

ACREAGE DETERMINATION  
CRUISE METHOD:

Acreage determined using GPS methods. Acreage shown above is net harvest acres in harvest units. All species, except ponderosa pine, 6.0 - 17.5 inches dbh cruised to a 4.0 inch dib top. All species, except ponderosa pine, 17.6 inches dbh and greater cruised to 40% of dob at 16 feet. Ponderosa pine 8.0 - 16.5 inches dbh cruised to a 5.5 inch dib top. Ponderosa pine 16.6 inches dbh and greater cruised to 40% of dob at 16 feet. 4 to 5 inch top (all spp), except ponderosa pine, cruised to between 4.0 and 5.5 inches dib top.

FEES:

\$8,559.50 is due on day of sale. \$9.00 per MBF is due upon removal. These are in addition to the bid price.

SPECIAL REMARKS:

Purchaser required to purchase and install two tubular gates as specified in the Road Use Permit. See road plan for specifications and locations.

Timber Sale Map

SALE NAME: Fox Mountain  
AGREEMENT NO.: 30-076764  
TRUST(S): Indemnity

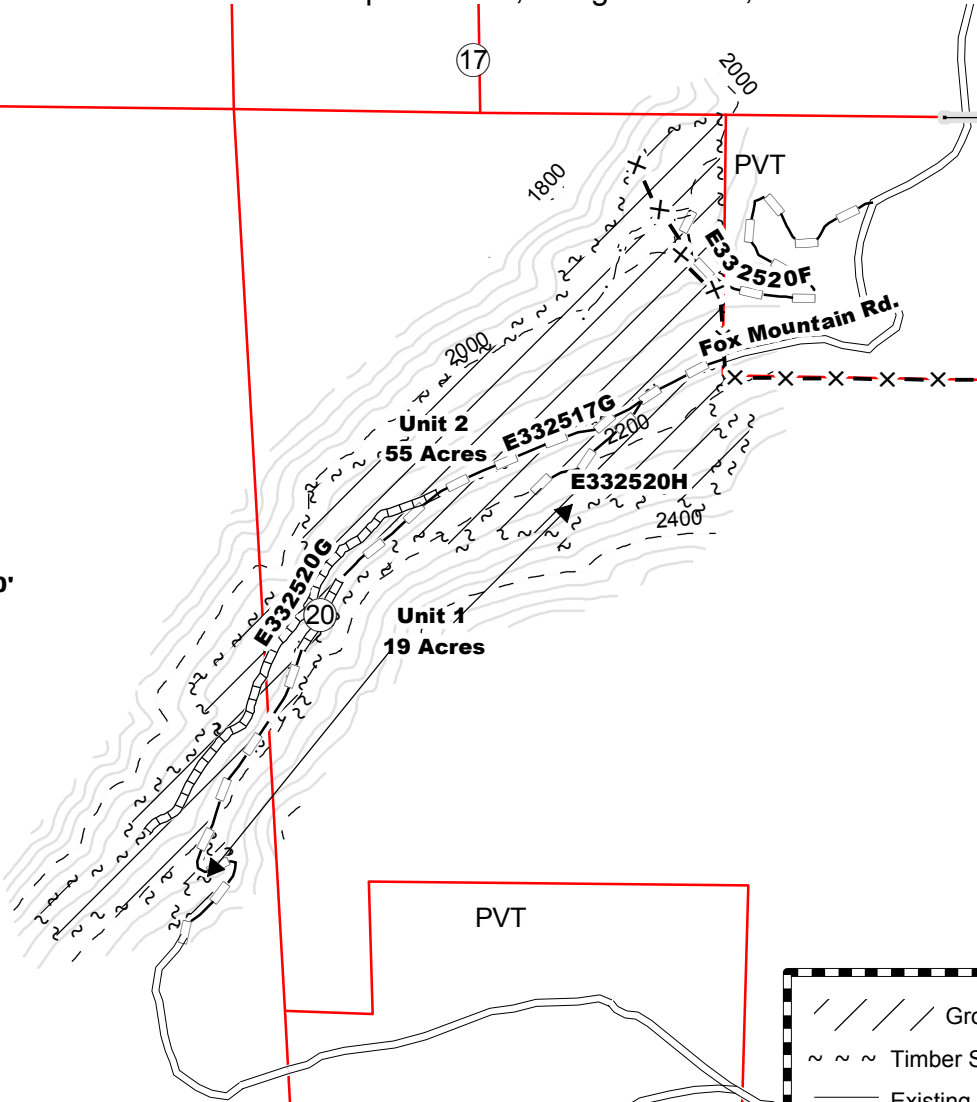
REGION: NORTHEAST  
COUNTY: Okanogan

Township 33 North, Range 25 East, W. M.

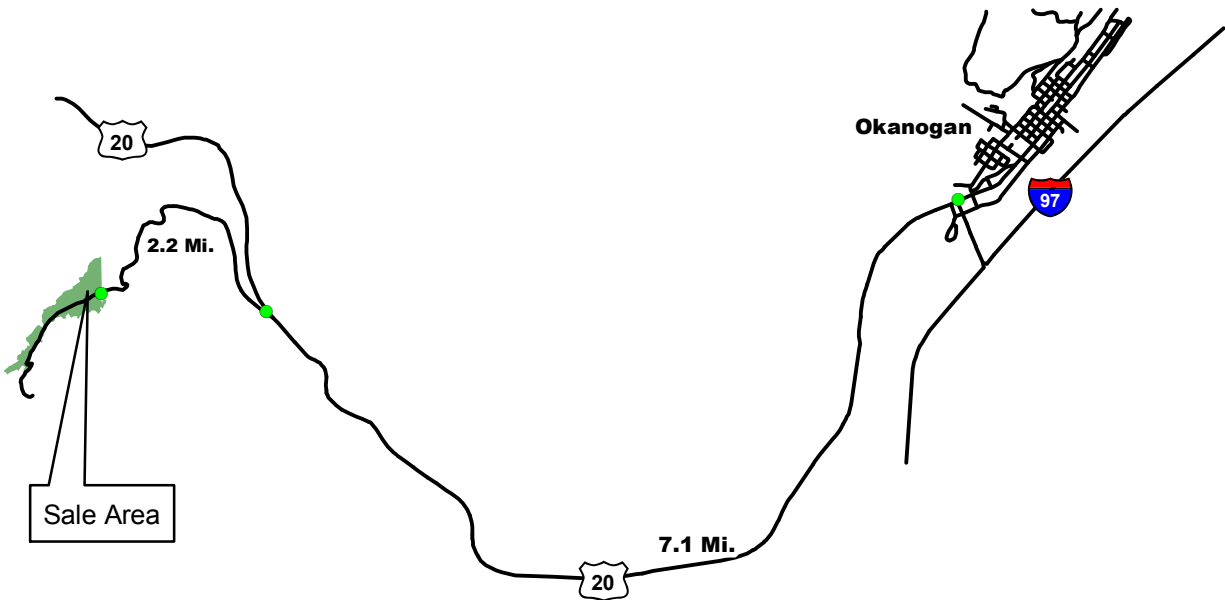
Note: Road details can  
Be found in the  
Road plan in  
The timber sale  
Contract.

Acres = Net Acres

Elevation = 1960' - 2400'



Vicinity Map  
(not to scale)



Scale: 1" = 1000'  
Drawn By: S. M.  
DATE: 06/13/2005