

## **Bidder's/Purchaser's Inspection of Sale Area and Forest Products**

Acreage estimates and volume estimates contained within each timber notice of sale and each timber sale contract are made only for administrative and identification purposes. Except as expressly provided by the timber sale contract, the purchaser shall be responsible for paying the entire purchase price, even if the actual acreage or timber volume varies from the estimated quantity or volume shown.

All prospective bidders have the opportunity and are expected to inspect the sale area and the forest products located thereon. Bidders shall not rely on any representations by the State including, but not limited to, acreage estimates, volume estimates, appraisal or pre-bid documentation. The successful bidder/purchaser will further warrant that they have entered the timber sale contract without any reliance upon the DNR's volume estimates, acreage estimates, appraisals, pre-bid documentation, or any other representation by the DNR.

*Any timber sale contract arising out of these public auctions will require the successful purchaser to warrant that they are entering the timber sale contract based solely upon their own judgment of the value of the forest products, formed after their own examination and inspection of both the timber sale area and the forest products being sold.*

---

## **Exclusion and Disclaimer of Warranties**

The PARTIES AGREE that the IMPLIED WARRANTIES OF MERCHANTABILITY AND FITNESS FOR A PARTICULAR PURPOSE, and ALL OTHER WARRANTIES EXPRESS OR IMPLIED, ARE EXCLUDED from this transaction, and shall not apply to the goods sold. For example, THE FOLLOWING SPECIFIC MATTERS ARE NOT WARRANTED, and are EXCLUDED from this transaction:

- a. ***The merchantability of the forest products.*** The use of the term “merchantable” in any document is not intended to vary the foregoing.
- b. ***The condition of the forest products.*** All forest products will be conveyed “AS IS.”
- c. ***The acreage contained within any sale area.*** Any acreage descriptions appearing in the timber notices of sale, timber sale contract, timber sale map or other documents are estimates only, provided solely for administrative and identification purposes.
- d. ***The volume, quality, or grade of the forest products.*** The descriptions of the forest products to be conveyed are estimates only, made solely for administrative and identification purposes.
- e. ***The correctness of any soil or surface conditions, presale construction appraisals, investigations, and all other pre-bid documents prepared by or for the State.*** These documents have been prepared for the State’s appraisal purposes only.
- f. ***That the sale area is free from threatened or endangered species, or their habitat.*** The State is not responsible for any interferences with forestry operations that result from the presence of any threatened or endangered species, or the presence of their habitat, within the sale area.
- g. ***That the forestry operations to be performed under this contract will be free from regulatory actions by governmental agencies.*** The State is not responsible for actions to enforce regulatory laws, such as the Washington Forest Practices Act (Chapter 76.09 RCW), taken by the Department of Natural Resources or any other agency that may affect the operability of these timber sales.
- h. Items contained in any other documents prepared for or by the State.

Please also see timber sale contract clause G-060 for further information.

# BIDDING PROCEDURES FOR TIMBER AUCTIONS

---

*The general requirements that follow are a part of all Timber Notices of Sale to be auctioned by the Department of Natural Resources (DNR).*

---

## General Information

*The State reserves the right to waive minor irregularities and the right to reject any or all bids.*

A. This book contains the timber notices of sale and maps for each timber sale scheduled to be auctioned. More specific information can be obtained by contacting the appropriate region office at the number listed on the back cover of this book.

B. The timber notice of sale is a summary of sale information. For more specific information, interested parties are encouraged to view the Appraisal Packets on the DNR Internet Site @ [www.dnr.wa.gov](http://www.dnr.wa.gov), this will take you directly to the Product Sales Section. The Appraisal Packets contain **DRAFT** copies of the timber notice of sale, map, contract, road plan, cruise data, precruise and cruise narrative, Forest Practices Application (FPA), Hydraulics Project Approval (HPA).

C. The sale preview packets may be obtained at no charge for individual sales by visiting the appropriate region office.

D. Timber sale contracts contain extensive terms and conditions that will be binding upon successful high bidders. Each bidder should carefully review all terms contained in the appropriate **DRAFT** timber sale contract prior to bidding on a sale, and should review the final contract prior to signing. **DRAFT** timber sale contracts are contained in the preview and presales packets and are available upon request at the respective region office.

E. Sales advertised in this book have not been approved by the Board of Natural Resources and are subject to the Board's approval before they will be sold. The Board meets and approves sales approximately six weeks prior to auction. All sales are subject to confirmation by the DNR under RCW 79.15.120.

F. The State does not guarantee the accuracy of any information contained herein pertaining to particular sales. Therefore, all prospective purchasers are expected to make their own independent inspections and appraisals prior to bidding.

G. If any conflict exists between the information in the Timber Notice of Sale, timber sale map, sale preview packets and that in the timber sale contract, the signed contract will prevail.

H. Timber sales are subject to the Washington State Forest Excise Tax (RCW Chapter 84.33).

I. Within 30 days of sale confirmation, the apparent high bidder will provide to the State the Performance Security specified on each Notice of Sale.

J. Each DNR region office has information about sales offered in that region. For further information, contact the respective DNR region office. Region office addresses and telephone numbers appear on the back cover of this booklet.

K. The purchaser assumes the responsibility for any costs associated with extra maintenance or repair levied by a county for any county road used by the purchaser.

## BIDDING PROCEDURES FOR TIMBER AUCTIONS (Continued)

### Bidding Process

- A. All timber will be auctioned using the sealed bid method.
- B. Bids submitted on day of auction must be in the bid box at the specified auction location before 10:00 a.m. The respective DNR region office must receive mailed bids by 4:30 p.m., on the last business day before the auction. Bidders assume all risk for the method of delivery.
- C. The DNR has the right to reject bid forms that are completed incorrectly. *All bid forms must have an original signature on behalf of the person or entity submitting the bid, and must be on the form provided in this booklet or a photocopy thereof. Revised documents are not permissible.* Bidding instructions are on the back of the Sealed Bid Form. A bid deposit must be included in the sealed bid envelope unless using a Timber Sale Statewide Bid Bond.
- D. All bids must include the completed Sealed Bid Form and bid deposit.
- E. Bids will be opened in each respective region in the order in which sales appear in the Public Auction Sale of Timber book (alphabetically by county and by agreement number).
- F. If a tie bid occurs, the names of the tie bidders will be placed in a hat and the successful bidder will be determined by a drawing.
- G. The apparent high bidder on a particular sale will have the option of withdrawing additional sealed bids submitted for any remaining sales to be auctioned. The apparent high bidder must exercise this option within two minutes after the apparent high bidder is announced.

---

### Auction Time and Location

Auctions will start at 10:00 a.m. and close at 4:00 p.m. on the date and at the location specified in each Timber Notice of Sale.

---

### Bid Deposits

- A. Required bid deposits are listed on each Timber Notice of Sale.
- B. Bid deposits must be in the form of cash, certified check, cashiers' check, money order or bid bond.
- C. Bid bonds may be either a Timber Sale Statewide Bid Bond or a Timber Sale Per Sale Bid Bond.
- D. All bid deposits shall be submitted by the person or entity submitting the bid and made payable to the Department of Natural Resources. **Third party deposits will not be accepted.**

---

### Timber Sale Per Sale Bid Bonds

- A. The Per Sale Bid Bond shall guarantee payment of the bid deposit **within ten days of auction.**
- B. The balance between the bid bond and the Initial Deposit payment is due by 4:30 p.m., **on the day of auction.**
- C. Additional forms and instructions for a Per sale Bid Bond are available at any DNR region office.

## Timber Sale Statewide Bid Bond

- A. Statewide Bid Bonds shall guarantee payment of the Initial Deposit on any statewide timber sale while the bond is in effect.
- B. The Statewide Bid Bond must be received by the Department of Natural Resources, Product Sales & Leasing Division, PO BOX 47016, Olympia, Washington, 98504-7016, ten days in advance of the auction date. The bond shall be in the amount of \$150,000.00.
- C. The bidder must supply a list of persons authorized to bid using the bond. Bid bonds are subject to approval by the Department of Natural Resources.
- D. Successful bidders using a Statewide Bid Bond must pay the total Initial Deposit payment (10 percent of the total bid price) **by 4:30 p.m. on the day of auction.**
- E. A Statewide Bid Bond cannot be used to secure the Initial Deposit payment due the day of auction.
- F. Additional forms and instructions for a statewide bid bond are available at any DNR region office.

---

## Payments

The initial deposit for a sale is 10% of the total bid value as submitted by the apparent high bidder (25% if the bidder is a defaulter as defined under WAC 332-140-300) and never less than \$5,000.00 for lump sum sales. For Lump Sum sales appraised at less than \$5,000.00, the entire bid value is due on day of auction.

- a. Apparent high bidders using cash, certified check, cashiers' check or money order as a bid deposit must pay the total Initial Deposit amount by 4:30 p.m. on auction day.
- b. Apparent high bidders using a Timber Sale Per Sale Bid Bond as a bid deposit must pay the difference between the bid deposit and the total initial deposit by 4:30 p.m., on the day of auction. The bid bond amount must be replaced with a certified check, cashier's check, bank draft, cash, money order, or wire transfer within ten days of the auction.
- c. Apparent high bidders using a Timber Sale Statewide Bid Bond must pay the entire Initial Deposit amount by 4:30 p.m. on the day of auction.

---

## Fees due on the day of sale must be paid by 4:30 p.m.

All payments must be in the form of a certified check, cashier's check, bank draft, cash, money order or wire transfer.

---

## Eligibility to Bid

In order to bid on State timber sales you must be:

- 18 years of age (or have a co-signer who meets the eligibility requirements),
- Licensed to do business in the State of Washington,
- Eligible to bid on Export Restricted timber, and
- Capable of meeting all contract obligations.

## Authorized Representatives

Companies may only use authorized representatives or company officers to bid on State sales, sign State documents or sign checks. A list of authorized representatives and their specific authorities must be submitted in writing to the Department of Natural Resources Product Sales & Leasing Division, PO BOX 47016, Olympia, Washington, 98504-7016, ten days in advance of the auction. A company owner or officer must sign this submittal.

State of Washington  
Department of Natural Resources  
Doug Sutherland, Commissioner of Public Lands

SEALED BID FORM

Sale Name \_\_\_\_\_ Agreement Number \_\_\_\_\_

\_\_\_\_\_ hereby submits the following bid for timber.  
(Print full, legal company name)

\_\_\_\_\_  
(Street address, City, State, Zip Code)

\_\_\_\_\_  
(Phone Number)

**Lump Sum Bid** (Not Including Fees) \$\_\_\_\_\_ **For Total Sale**

**Weight Scale Sale Bid** (Not Including Fees) \$\_\_\_\_\_ / **Ton**

**Scribner Scale Sale Bid** (Not Including Fees) \$\_\_\_\_\_ / **MBF**

**BID DEPOSIT**

**Bid Deposit Amount:** \$\_\_\_\_\_

**Bid Deposit Type:**

- ☐ Cash, certified check, cashiers check, or money order  
☐ Per Sale Bid Bond  
☐ Statewide Bid Bond, Number \_\_\_\_\_

The Successful Bidder agrees to furnish, **within 30 days of confirmation date**, Performance Security acceptable to the State in the amount specified on the Notice of Sale. Performance Security must guarantee performance of all provisions of the contract and payment of any damages caused by operations under the contract or resulting from the successful bidders noncompliance with any rule or law.

**Bidder's Warranty and Bid Signature**

*By signing and submitting this bid as an offer to purchaser forest products from the State, the Bidder hereby warrants to the State that they have had an opportunity to fully inspect the sale area and the forest products being sold. Bidder further warrants to the State that they enter this bid based upon their own judgments of the value of the forest products, formed after their own examination and inspection of both the timber sale area and the forest products being sold. Bidder also warrants to the State that they enter this bid without any reliance upon the volume estimates, acreage, appraisals, pre-bid documentation, or any other representation by the Washington State Department of Natural Resources.*

\_\_\_\_\_  
(Signature of Authorized Representative submitting this bid)

Date \_\_\_\_\_

\_\_\_\_\_  
(Print **name and title** of Authorized Representative submitting this bid)

**Note: all sales are subject to confirmation by the Commissioner of Public Lands (Refer to RCW 79.15.120)**

# Instructions For Completing Sealed Bid Form

*All bids submitted for the purchase of forest products being sold by the Washington State Department of Natural Resources must have an original signature on behalf of the person or entity submitting the bid, and must be on the form provided in this booklet or a photocopy thereof. The DNR will not accept bids that are not signed, and will not accept bids that are not on the current, approved bid form. All appropriate blanks on bid form must be completed including the bid bond number if the bidder is relying upon a bid bond for bid deposit.*

*For more specific information, contact the appropriate region office.*

---

## In-Person Bids

- A. Sealed bids must be in auction box before 10:00 a.m. on the day of auction at the location specified in the Timber Notice of Sale.
  - B. Sealed bids must be submitted in an envelope with the name of the sale, the bidder's name and the contract number clearly written on the outside of the envelope. The full legal name and business address of the bidder must be inserted where indicated on the form, and must be on the bid bond and timber sale contract. The bid form must be signed by an authorized representative. When a bidder has more than one person authorized to bid, documentation of those persons with signature authority for bidding must accompany the bid or be on file at the region office. Sealed bid envelopes are available at all region offices. One bid per envelope.
  - C. Sealed bid envelopes **must** contain a completed bid form and a bid deposit.
  - D. Sealed bid envelopes **may** contain a check for the Initial Deposit amount and a check for fees.
- 

## Mailed Bids

- A. Bids that are mailed are required to have printed on the outside: "DO NOT OPEN UNTIL SALE DATE. SEALED BID ENCLOSED". The sealed bid envelope(s) will be enclosed inside the mailed-in envelope. Mailed bids must be submitted in an envelope with the name of the sale, the bidder's name and the agreement number clearly written on the outside of the envelope. The full legal name and business address of the bidder must be inserted where indicated on the form, and must be the same on the bid bond and timber sale contract. The Sealed Bid Form must be signed by an authorized representative. When a bidder has more than one person authorized to bid, then documentation of those persons with signature authority for bidding must accompany the bid or be on file at the region office. Mail-in envelopes are available at all region offices. One bid per mailed-in envelope.
  - B. Bids that are mailed will be accepted up to 4:30 p.m. the last business day before the auction by the region office in which the sale is located. Bidders assume the risk for the method of delivery. The DNR assumes no responsibility for any delays caused by any delivery service.
  - C. Sealed bid envelopes **must** contain a completed bid form and a bid deposit.
  - D. Sealed bid envelopes **may** contain a check for the Initial Deposit amount and a check for fees.
- 

## Initial Deposit:

**Lump Sum Sales** - Initial Deposit must equal 10% of the total bid submitted.  
(25% if the bidder is a defaulter as defined under WAC 332-140-300)

**Weight Scale Sales** - Initial Deposit must equal 10% of the bid per ton multiplied by the total sale estimated tonnage. (25% if the bidder is a defaulter as defined under WAC 332-140-300)

**Scribner MBF Scale Sales** - Initial Deposit must equal 10% of the bid per MBF multiplied by the total sale MBF. (25% if the bidder is a defaulter as defined under WAC 332-140-300)

State of Washington  
Department of Natural resources  
Doug Sutherland, Commissioner of Public Lands

STATEWIDE BID BOND

Bond Number \_\_\_\_\_

\_\_\_\_\_ of \_\_\_\_\_,  
(Principal's Name) (City, State)

hereinafter called PRINCIPAL, and \_\_\_\_\_ hereinafter called SURETY,

a corporation organized under the laws of the State of \_\_\_\_\_, and authorized to transact surety business in the State of Washington, as SURETY, are held and firmly bound jointly and severally to the State of Washington, Department of Natural Resources, hereinafter called the STATE, in the sum of \$150,000.00 Dollars, lawful money of the United States of America. The PRINCIPAL binds itself, its heirs, executors, administrators, successors, and assigns, and the SURETY binds itself, its successors, and assigns, all jointly and severally.

This bond shall be governed by the laws of the State of Washington. In the event of a lawsuit involving this bond, a venue shall be proper only in Thurston County Superior Court.

Signed, sealed and dated this \_\_\_\_\_ day of \_\_\_\_\_, \_\_\_\_\_.  
(month) (year)

This statewide bid bond may be used for bidding between the following dates:

Starting: \_\_\_\_\_

Ending: \_\_\_\_\_

**It Is Hereby Understood and Agreed:**

If PRINCIPAL is an apparent high bidder, PRINCIPAL shall before 4:30 p.m., on day of sale, pay to the STATE the amount of the initial deposit in the form of a certified check, cashier's check, bank draft, cash or money order, then this agreement shall be void for the sale on which the payment is made; otherwise, it will remain in force.

SURETY will make payment to the STATE within ten days after demand by the STATE if the PRINCIPAL shall fail to make timely payment as described above.

The SURETY may cancel this bond by sending a written notice to the STATE, not less than forty-five days before a cancellation date; liability shall terminate as to acts or omissions of the PRINCIPAL that occur after the cancellation date.

The PRINCIPAL and the SURETY executed this bond on the date first mentioned.

**Principal:** (Above named)

Signature: \_\_\_\_\_

Name: \_\_\_\_\_

Title: \_\_\_\_\_

Address: \_\_\_\_\_

City: \_\_\_\_\_  
State & Zip Code

**Surety:** (Above named)

Signature: \_\_\_\_\_

Name: \_\_\_\_\_

Title: \_\_\_\_\_

Address: \_\_\_\_\_

City: \_\_\_\_\_  
State & Zip Code

**Surety:** (Local Office of Authorized agent)

Signature: \_\_\_\_\_

Name: \_\_\_\_\_

Title: \_\_\_\_\_

Address: \_\_\_\_\_

City: \_\_\_\_\_  
Above  
State & Zip

Notary or Company Seal in Space

## Instructions For Completing Timber Sale Statewide Bid Bond

- A. This form is authorized for use as bid guaranty to qualify for bidding on Washington State Department of Natural Resources timber sales.
- B. The Statewide Bid Bond may be used as bid guaranty on more than one timber sale.
- C. The full legal name and business address of the PRINCIPAL must be inserted where indicated and must be the same as will appear on the bidding record and timber sale contract. The bond must be signed by an authorized person. Additionally, the name must be typed or printed below the signature and title must be shown.
- D. The full legal name and business address of the SURETY must be inserted where indicated. The bond must be signed by an authorized person. Additionally, the name must be typed or printed below the signature and the title must be shown.
- E. If the SURETY does not have a Washington State office or resident agent, but is authorized to transact surety business in the State of Washington as SURETY, it may leave this signature block blank.
- F. This form must be received by the Department of Natural Resources, Product Sales and Leasing Division, PO BOX 47016, Olympia, Washington, 98504-7016, ten days in advance of the auction.
- G. The PRINCIPAL must submit a list of authorized bidders with the Statewide Bid Bond Form.
- H. **The State reserves the right to reject *incomplete* or *incorrect* bid bond forms, making such forms unacceptable as bid guaranty.**

State of Washington  
Department of Natural Resources  
Doug Sutherland, Commissioner Of Public Lands

Timber Sale Per Sale Bid Bond

Bond Number\_\_\_\_\_

\_\_\_\_\_ of \_\_\_\_\_, hereinafter called PRINCIPAL, and \_\_\_\_\_, hereinafter called SURETY, a corporation organized under the laws of the State of \_\_\_\_\_ and authorized to transact surety business in the State of Washington, as SURETY, are held and firmly bound jointly and severally to the State of Washington, Department of Natural Resources, hereinafter called the STATE, in the sum of \$\_\_\_\_\_Dollars, lawful money of the United States of America. The PRINCIPAL binds itself, its heirs, executors, administrators, successors, and assigns, and the SURETY binds itself, its successors, and assigns, all jointly and severally.

This bond shall be governed by the laws of the State of Washington. In the event of a lawsuit involving this bond, venue shall be proper only in Thurston County Superior Court.

Signed, sealed, and dated this\_\_\_\_\_day of \_\_\_\_\_, 20\_\_\_\_\_.

BID IDENTIFICATION:

SALES NAME(S)	REQUIRED DEPOSIT	AGREEMENT NUMBER(S)

DATE OF BID: \_\_\_\_\_

It Is Hereby Understood and Agreed:

If PRINCIPAL is the high bidder on the sale(s) identified above and, within ten (10) days of the day of sale, transmits cash, certified check, cashier=s check, bank draft or money order, payable to the STATE, in the amount of the bid guaranty required by the terms of the Notice of Sale, *then* this obligation shall be void; *otherwise*, it shall remain in force.

SURETY will make payment to the STATE within ten (10) days after demand by the STATE whenever the PRINCIPAL shall fail to make timely payment as described above.

IN WITNESS WHEREOF: the PRINCIPAL and the SURETY have caused this bond to be executed on the date first mentioned.

SECOND OFFICER:

Signature: \_\_\_\_\_

Name: \_\_\_\_\_

Title: \_\_\_\_\_

PRINCIPAL: (Above Named)

Signature: \_\_\_\_\_

Name: \_\_\_\_\_

Title: \_\_\_\_\_

Address: \_\_\_\_\_

SURETY: (Local Office of Authorized Agent)

Signature:\_\_\_\_\_

Name: \_\_\_\_\_

Title: \_\_\_\_\_

Address: \_\_\_\_\_

City: \_\_\_\_\_

State & Zip: \_\_\_\_\_

City: \_\_\_\_\_

State & Zip:

SURETY: (Above Named)

Signature: \_\_\_\_\_

Name: \_\_\_\_\_

Title: \_\_\_\_\_

Address: \_\_\_\_\_

City: \_\_\_\_\_

State & Zip\_\_\_\_\_

NOTARY OR COMPANY SEAL IN THE SPACE ABOVE

## Instructions For Completing Timber Sale PerSale (s) Bid Bond

- A. This form is authorized for use as bid guaranty to qualify for bidding on Washington State Department of Natural Resources timber sales.
- B. The Timber Sale Per Sale Bid Bond may be used as bid guaranty on more than one timber sale auction held the same date at the same location.
- C. The full legal name and business address of the PRINCIPAL must be the same as will appear on the bidding record and timber sale contract. The bond must be signed by an authorized person, the name typed or printed, and title shown. If PRINCIPAL is a corporation, a second officer must sign in the space to the left of the signature of the officer executing for the PRINCIPAL.
- D. The full legal name and business address of the SURETY must be inserted where indicated. The bond must be signed by an authorized person. Additionally, the name must be typed or printed below the signature and the title must be shown. If this person is not an officer of the corporation, evidence of authority must be submitted.
- E. If the SURETY does not have a Washington State office or resident agent, but is authorized to transact surety business in the State of Washington as Surety, it may leave the local office signature block blank.
- F. The date of the bid bond must not be later than the auction date.
- G. **The State reserves the right to reject *incomplete or incorrect* bid bond forms, making such forms unacceptable as guaranty.**

Summary Report of All Sales for the Month of November 2005

Board Sales					
County	Region	Agree #	Sale Name	Volume	Value
Clallam	Olympic	77384	*GOLDIE	4,458	\$0.00
Clark	Pacific Cascade	77370	*COAT AND TIE	1,730	\$0.00
Cowlitz	Pacific Cascade	77138	*CASEY OUTBREAK THINNING & CC2,219		\$0.00
King Snohomish	South Puget	75797	*HANNON WEIGH	4,893	\$0.00
Klickitat	Southeast	76976	MICROBREWER	1,284	\$0.00
Mason	South Puget	76808	*OLD TIE GRADE	5,924	\$0.00
Okanogan	Northeast	77503	KATASA	2,613	\$0.00
Pacific	Pacific Cascade	77395	*HOT SAW	3,378	\$0.00
Skagit	Northwest	77127	*LOST HORIZONS	4,142	\$0.00
Skagit	Northwest	77244	*BUTLER HILL	1,501	\$0.00
Snohomish	Northwest	74540	*BACK NINE	1,113	\$0.00
Snohomish	Northwest	75744	*BLACK EYE	3,027	\$0.00
Snohomish	Northwest	77260	*VACILLATE	2,205	\$0.00
Total				38,487	\$0.00

\* Sales marked with an asterisk (\*) are on lands certified under the *Sustainable Forestry Initiative*® Program. [www.aboutsfi.org](http://www.aboutsfi.org)



TIMBER NOTICE OF SALE

**SALE NAME:** *GOLDIE*

**AGREEMENT NO:** 30-077384

**AUCTION:** November 15, 2005 starting at 10:00 a.m., **COUNTY:** Clallam  
South Puget Sound Region Office, Enumclaw, WA

**SALE LOCATION:** Sale located approximately 12 miles north of Forks, WA

**PRODUCTS SOLD AND SALE AREA:** All timber bounded by timber sale boundary tags, the FS 30 Road (West Twin Road), 4+99 spur, and logged areas, except leave trees marked with blue paint in Unit #1; all timber bounded by timber sale boundary tags, the B-2134 Road, the B-2135 Road, the B-2133 Road and logged areas, except leave trees marked with blue paint in Unit #2; all timber bounded by timber sale boundary tags and a property line, except leave trees marked with blue paint in Unit #3; all timber bounded by timber sale boundary tags, the Bear Creek Road, a logged area, and a property line, except leave trees marked with blue paint in Unit #4; all timber bounded by right of way boundary tags on part(s) of Sections 1 and 12 all in Township 29 North, Range 13 West, Sections 23, 25 and 26 all in Township 30 North, Range 12 West, W.M., containing 137 acres, more or less.

**ESTIMATED SALE VOLUMES AND QUALITY:**

Species	Avg DBH	Ring Count	Total MBF	MBF by Grade								UT
				1P	2P	3P	SM	1S	2S	3S	4S	
Hemlock	16.6	6	2,517				27		931	1,324	235	
Spruce	23.5	6	1,057						617	381	59	
Douglas fir	17.7	6	639						421	187	31	
Red alder	13.6		226					12	68	32	114	
Red cedar	25		19							19		
Sale Total			4,458									

**MINIMUM BID:** \$1,087,000.00 **BID METHOD:** Sealed Bids

**PERFORMANCE SECURITY:** \$100,000.00 **SALE TYPE:** Lump Sum

**EXPIRATION DATE:** November 30, 2007 **ALLOCATION:** Export Restricted

**BID DEPOSIT:** \$108,700.00 or Bid Bond. Said deposit shall constitute an opening bid at the appraised price.

**HARVEST METHOD:** Cable and shovel methods. Yarding will not be permitted from October 15 to July 1 unless authorized in writing by the Contract Administrator in Unit 1.

**ROADS:** 45.87 stations of required construction. 193.03 required pre-haul maintenance. Purchaser maintenance required on all roads used except the FS 30 Road (West Twin Road) and the FS 2902 Road, which will be designated maintenance. Suspension of haul may occur on the FS 2902 Road for 2 to 3 weeks between July 1, 2006 and October 15, 2006.

**ACREAGE DETERMINATION**

**CRUISE METHOD:** Units were 100% GPS traversed. Units were cruised using a variable plot sample with a BAF of 46.94F and 62.50F on a 330 x 290 foot grid in Unit #1; a BAF of 54.44F and 46.94F on a 330 x 290 foot grid in Unit #2; a BAF of 54.44F and 33.61F on a 330 x 290 foot grid for Unit #3; a BAF of 46.94F on a 330 x 290 foot grid in Unit 4. Right of Way was 100% cruised.

**FEES:** Purchaser must enter into a Road Use Permit with the US Forest Service in the amount of \$363.60, which is due prior to hauling. Purchaser will also pay \$0.64/mbf for timber haul and \$0.16/cuyd for rock haul and will be required to report actual timber and rock haul volumes to the US Forest Service. \$59,069.00 is due on day of sale. \$9.00 per MBF is due upon removal. These are in addition to the bid price.

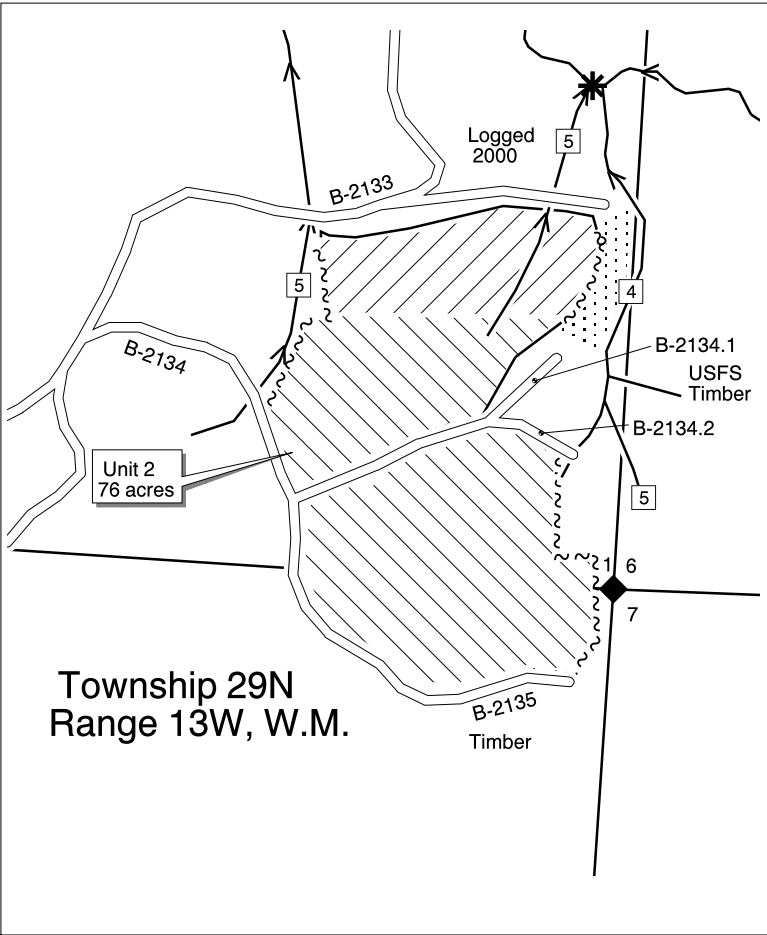
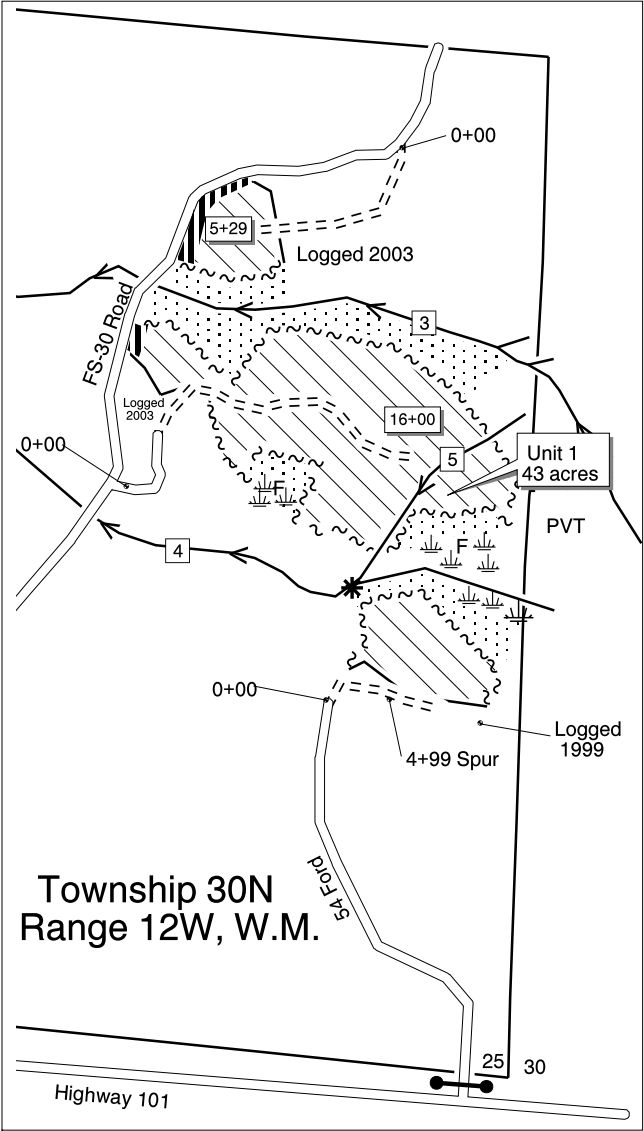
**SPECIAL REMARKS:** There are gates on the 2902 Road, 54 Ford Road, and the Baby Bear and Mary Clark Pits. Contact the Olympic Region Dispatch Center at 360-374-6131 to obtain a AA-1 key. For private right of way, purchaser is required to cut timber into 10 foot lengths and pile behind gate on the property of Jim and Karen Meur - see the easement for more details. There are slash pullback requirements in Units 1 and 4. Purchaser must contact the Call Before You Dig underground utility service at 1-800-424-5555, 48 hours prior to beginning operations along the 18+59 road.



TIMBER SALE MAP

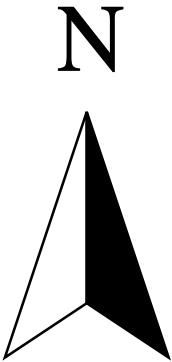
SALE NAME: GOLDIE  
AGREEMENT NO: 30-077384  
TRUST(S): Forest Board Transfer

REGION: Olympic  
COUNTY(S): Clallam



See Road Plan For  
Pre-Haul Maintenance  
Locations and Requirements

Units 1 and 4 Have  
Slash Pullback  
Requirements

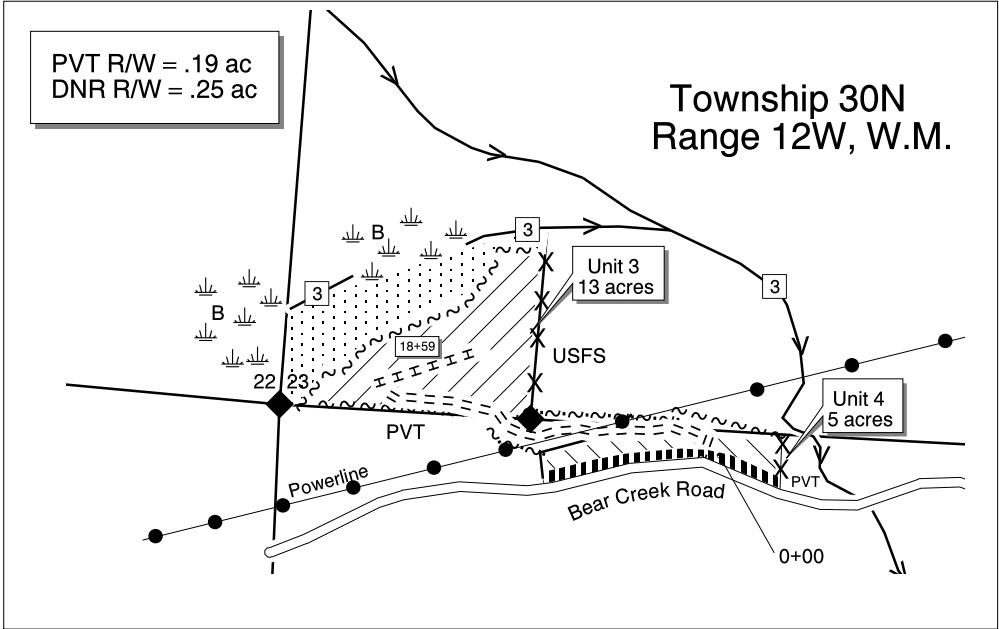


Map 1 of 2

Drawn By: M. Helms  
Date: August 11, 2005  
Scale: 1" = 1000'



Elevation: 500 - 1000'

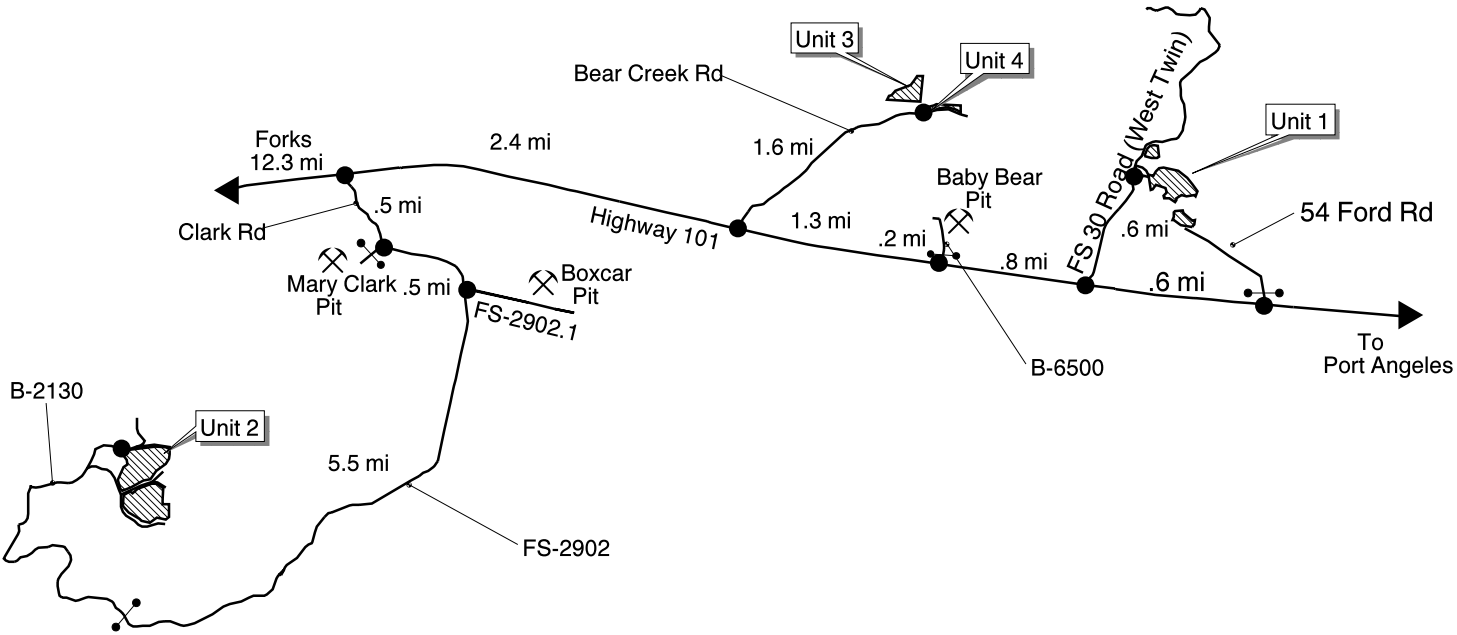


Legend			
~~~~~	Timber Sale Boundary Tags	=====	Existing Road
~~~~~	R/W Boundary Tags	=====	Required Construction
X—X	Property Lines		Designated Skid Trail
///	Cable		Slash Pullback
///	Shovel	▶	Stream
	RMZ/WMZ	3	Stream Type
⊗	Rock Pit	*	Stream Type Change
⏏	Wetland	◆	Survey Monument
●—●	Powerline	●—●	Gate

TIMBER SALE MAP

SALE NAME:	GOLDIE	REGION:	Olympic
AGREEMENT NO:	30-077384	COUNTY(S):	Clallam
TRUST(S):	Forest Board Transfer		

Vicinity Map  
Not to Scale



Drawn By: M. Helms  
Date: August 11, 2005

TIMBER NOTICE OF SALE

**SALE NAME:** COAT AND TIE

**AGREEMENT NO:** 30-077370

**AUCTION:** November 17, 2005 starting at 10:00 a.m., **COUNTY:** Clark  
Pacific Cascade Region Office, Castle Rock, WA

**SALE LOCATION:** Sale located approximately 15 miles east of Woodland, WA

**PRODUCTS SOLD AND SALE AREA:** All timber, except snags, down timber existing two years prior to the day of sale, leave trees tagged out with leave tree area tags and leave trees marked with ORANGE paint, bounded by timber sale boundary tags and property lines in Unit #1; all timber, except snags, down timber existing two years prior to the day of sale, leave trees tagged out with leave tree area tags and leave trees marked with BLUE paint, bounded by the following: timber sale boundary tags and property line in Unit #2, and timber sale boundary tags in Unit #3; on part(s) of Sections 8 and 9 all in Township 5 North, Range 3 East, W.M., containing 46 acres, more or less.

**ESTIMATED SALE VOLUMES AND QUALITY:**

Species	Avg DBH	Ring Count	Total MBF	Total \$/MBF	MBF by Grade								
					1P	2P	3P	SM	1S	2S	3S	4S	UT
Douglas fir	24.6	12	1,287	\$457.00			145	124		731	272	15	
Red alder	14.3		217	\$218.00					7	34	63	113	
Hemlock	18.8	10	105	\$231.00						66	34	5	
Red cedar	22.5		79	\$540.00						5	63	11	
Maple	16.7		42	\$71.00					6	5	11	20	
Sale Total			1,730										

**MINIMUM BID:** \$457/MBF (est. value \$705,000.00) **BID METHOD:** Sealed Bids

**PERFORMANCE SECURITY:** \$100,000.00 **SALE TYPE:** MBF Scale

**EXPIRATION DATE:** October 31, 2007 **ALLOCATION:** Export Restricted

**BIDDABLE SPECIES:** Douglas fir

**BID DEPOSIT:** \$70,500.00 or Bid Bond. Said deposit shall constitute an opening bid at the appraised price.

**HARVEST METHOD:** Tracked or shovel harvesting equipment on slopes of 40% and less during dry soil conditions. Shovel operations may be suspended during periods of wet weather when rutting is apparent as a result of shovel logging. Any and all snags cut because of safety concerns cannot be removed and must remain where they were felled.

**ROADS:** 24.47 stations of optional construction. 39.40 Stations of pre-haul maintenance. 1,500 cubic yards of rock is available from a private pit in Sec.8, T5N, R3E, W.M. Purchaser shall deliver to the State, within 10 days of date of sale, a check made payable to Longview Fibre Company in the amount of \$5,750.00 for a road Use Permit and rock purchase. The Road Use Permit (RUP) is broken down as \$2,000.00 for the RUP, land \$500.00 and rock purchase \$2,250.00.

**ACREAGE DETERMINATION**

**CRUISE METHOD:** Acreage was determined by GPS. Cruise was completed using variable plot cruise methods. Harvesting activities are estimated to be 100% ground based harvesting.

**FEES:** \$22,920.00 is due on day of sale. \$9.00 per MBF is due upon removal. These are in addition to the bid price.

**SPECIAL REMARKS:** A detailed felling and yarding plan shall be required prior to any harvest activities and approved in writing by the Contract Administrator.

TIMBER SALE MAP

SALE NAME: COAT AND TIE

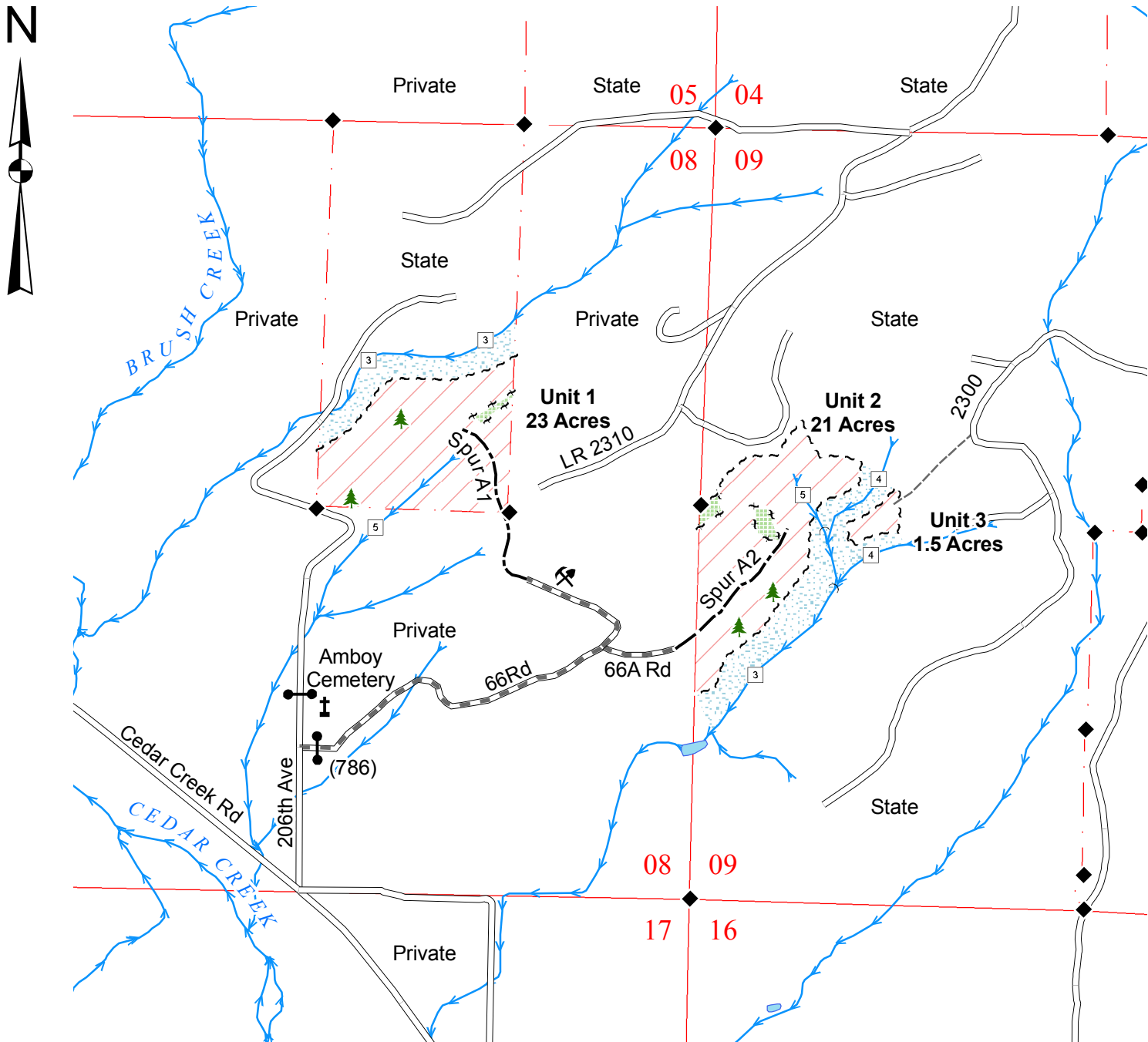
AGREEMENT NO: 30-077370

TRUST(S): State Forest Board Transfer (01)

REGION: Pacific Cascade

COUNTY(S): Clark

Township 05 North, Range 03 East, W.M.



Legend

Sale Area

Leave Tree Area

RMZ

Sale Boundary Tags (White)

Leave Tree Tags (Yellow)

Existing Roads

Pre-haul Maintenance

Optional Construction

Designated Skid Trail

Streams

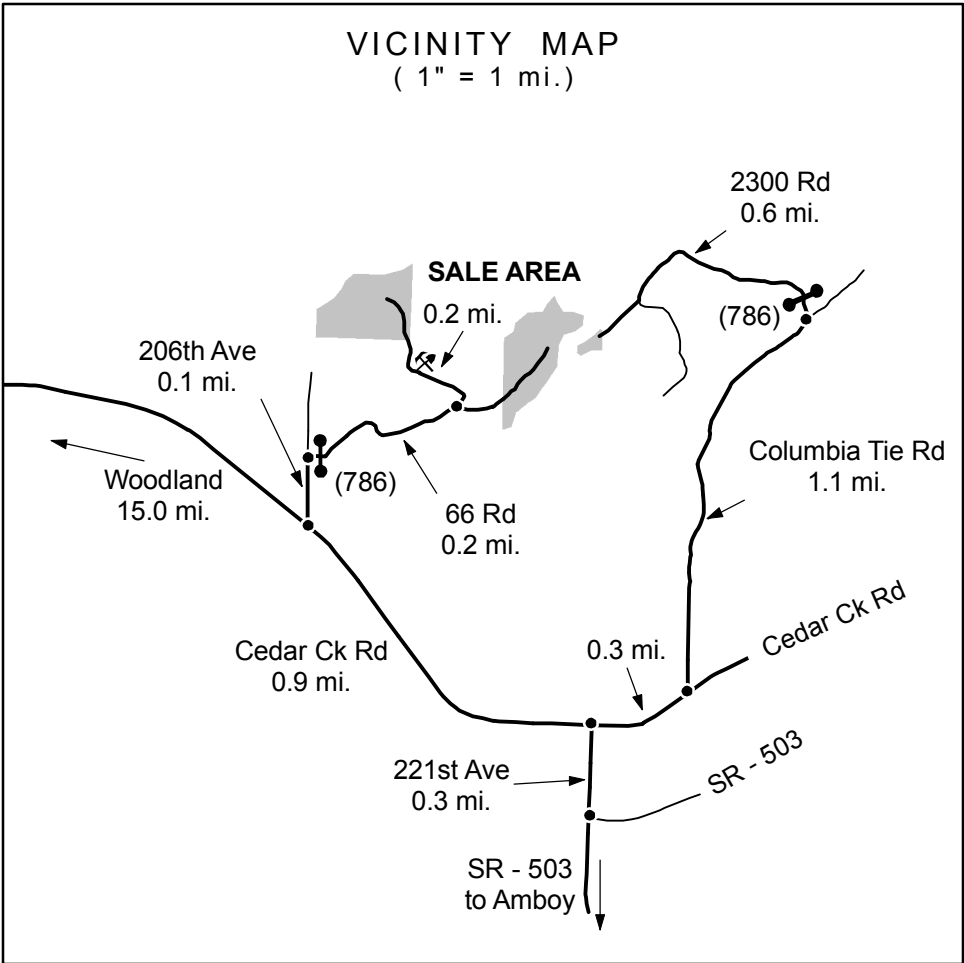
Water Type 1 - 5

Monumented Corner

Leave Trees

Existing Rock Pit

Gate (786 Master)



Drawn By: Shawn B.

Date: August 29, 2005

Scale: 1" = 1000'

Elevation: 560ft. - 920ft.

TIMBER NOTICE OF SALE

**SALE NAME:** CASEY OUTBREAK THINNING & CC      **AGREEMENT NO:** 30-077138

**AUCTION:** November 17, 2005 starting at 10:00 a.m.,      **COUNTY:** Cowlitz  
Pacific Cascade Region Office, Castle Rock, WA

**SALE LOCATION:** Sale located approximately 7 miles north of Castle Rock, WA

**PRODUCTS SOLD AND SALE AREA:** All timber, except snags and leave trees as described in Schedule A, bounded by the following: timber sale boundary tags and the P-700 road in Units #1 and #2; timber sale boundary tags, special management area boundary tags, the P-720 and P-700 roads in Unit #3; timber sale boundary tags, special management area boundary tags, and the P-700 road in Unit #4; timber sale boundary tags, and the P-1010 road in Unit #5; timber sale boundary tags, special management area boundary tags, and the P-1010 road in Unit #6; timber sale boundary tags, special management area boundary tags, the P-703, P-720 and P-722 roads in Unit #7, all timber, except snags and leave trees marked with blue paint bounded by the following: timber sale boundary tags, special management area boundary tags, the P-720 and P-722 roads in Unit #8; timber sale boundary tags, special management area boundary tags, and the P-720 road in Unit #9; special management area boundary tags, and the P-720 road in Unit #10; timber sale boundary tags, special management area boundary tags, the P-700, and P-750 roads in Unit #11 on part(s) of Sections 8, 16, 17 and 18 all in Township 10 North, Range 2 West, W.M., containing 355 acres, more or less.

**ESTIMATED SALE VOLUMES AND QUALITY:**

Species	Avg DBH	Ring Count	Total MBF	Total Tons	Price \$/Ton	MBF by Grade								UT
						1P	2P	3P	SM	1S	2S	3S	4S	
Douglas fir	10.8	3	2,138	14,752	\$26.95							808	1,330	
Red alder	10.5		64	563	\$26.95								64	
Hemlock	7.7		17	127	\$26.95								17	
Sale Total			2,219	15,442										

**MINIMUM BID:** \$26.95/ton (est. value \$416,000.00)      **BID METHOD:** Sealed Bids

**PERFORMANCE SECURITY:** \$83,200.00      **SALE TYPE:** Tonnage Scale

**EXPIRATION DATE:** October 31, 2007      **ALLOCATION:** Export Restricted

**BIDDABLE SPECIES:** Bidding to be allowed on all species combined.

**BID DEPOSIT:** \$41,600.00 or Bid Bond. Said deposit shall constitute an opening bid at the appraised price.

**HARVEST METHOD:** Tracked harvesting equipment (tracked skidder, forwarder), with shovel harvesting equipment being allowed only in Units #8 through #11. All felled timber shall be yarded and hauled within 30 days. Shovel logging will not be permitted on slopes over 35%. Falling and Yarding will not be permitted from May 15 to July 1 unless authorized in writing by the Contract Administrator during periods of loose bark, within Units #1 through #7.

**ROADS:** 2.16 stations of optional construction. 25.23 stations of optional reconstruction. 270.73 stations of pre-haul maintenance. 63.41 stations of road abandonment. 11.31 stations of road deactivation. Rock for this contract may be obtained from a commercial source as approved by the Contract Administrator. Purchaser is responsible for all notification and liabilities associated with the buried utilities and its right-of-way. Purchaser will be required to widen the N-6600 road from station 5.28 to station 15.84 to the dimensions shown on the Typical Section Sheet. Road construction will not be permitted from September 30 to May 1 unless authorized in writing by the Contract Administrator.

**ACREAGE DETERMINATION**

**CRUISE METHOD:** Acres were determined by aerial photo and GIS digitizing. The sale was cruised using a variable plot method. Harvesting activities are estimated to be 100% ground harvesting equipment.

**FEES:** \$10,000.00 is due on day of sale. \$2.55 per ton is due upon removal. These are in addition to the bid price.

**SPECIAL REMARKS:** Areas of root rot identified by the fallers or the Contract Administrator shall be marked around the perimeter by high stumping or marking the top of the stump with an X in Units #1 through #7. Purchaser shall create 680 plantable spots per acre in units #8



**TIMBER NOTICE OF SALE**

---

through #11. Pulling and uprooting of large Vine Maple clumps that may be present in  
units #8 through #11.

TIMBER SALE MAP

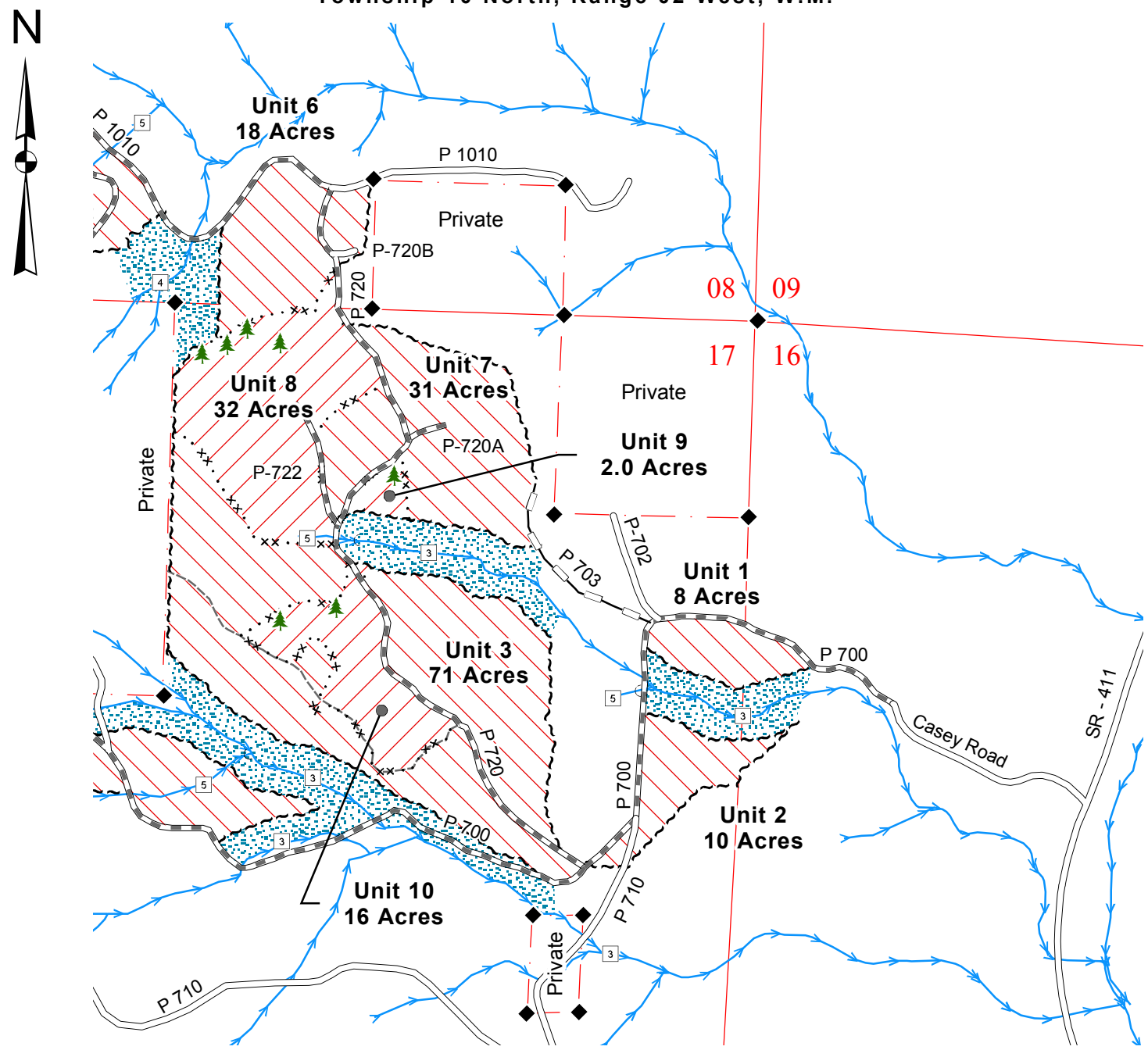
SALE NAME:  
AGREEMENT NO:  
TRUST(S):

CASEY OUTBREAK THINNING & CC  
30-077138  
State Forest Board Transfer (01), Common School (03), Agricultural School (04), & Scientific School (10)

REGION:  
COUNTY(S):

Pacific Cascade  
Cowlitz

Township 10 North, Range 02 West, W.M.



Legend

Thinning Area

Clearcut Area

RMZ

Sale Boundary Tags (White)

Special Management Area Boundary Tags (Blue/White)

Existing Roads

Pre-haul Maintenance

Optional Construction

Optional Reconstruction

Required Abandonment

Trail

Streams

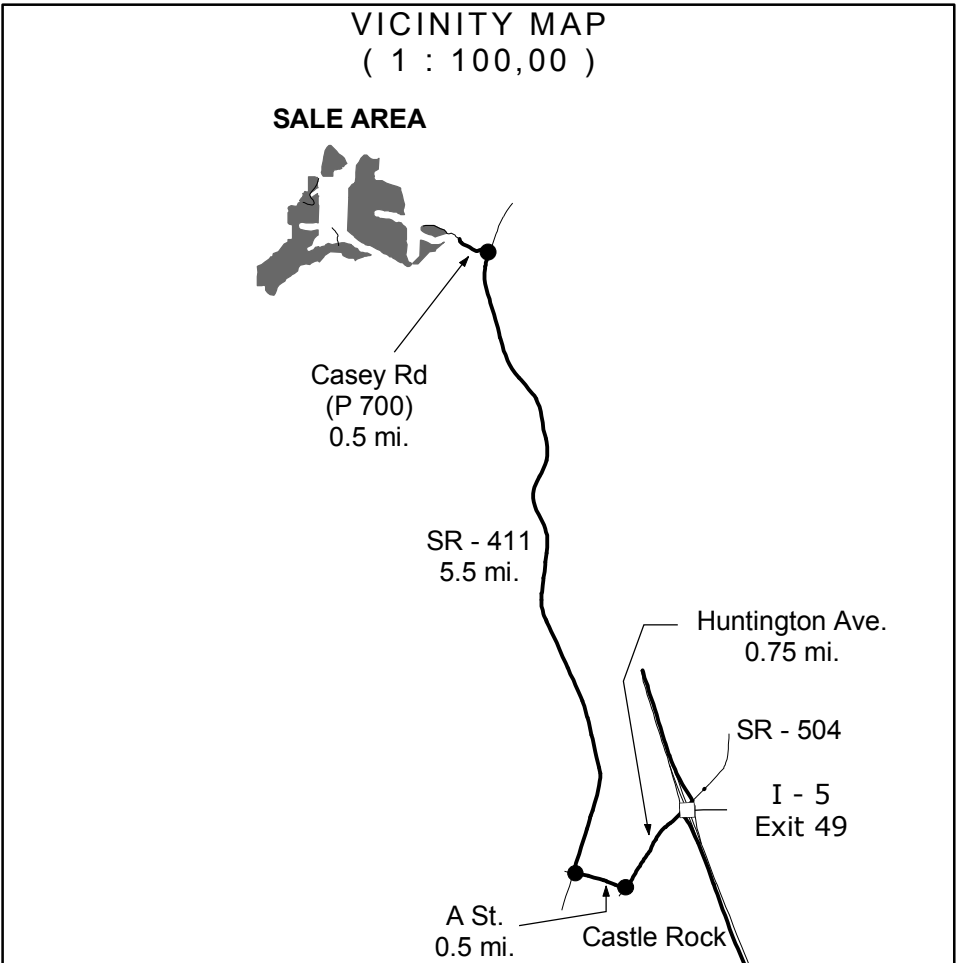
Water Type 1 - 5

Monumented Corner

Radio Tower

Leave Trees

Drawn By: Shawn B.  
Date: May 6, 2005  
Scale: 1" = 1000'  
Elevation: 250ft - 1,300ft



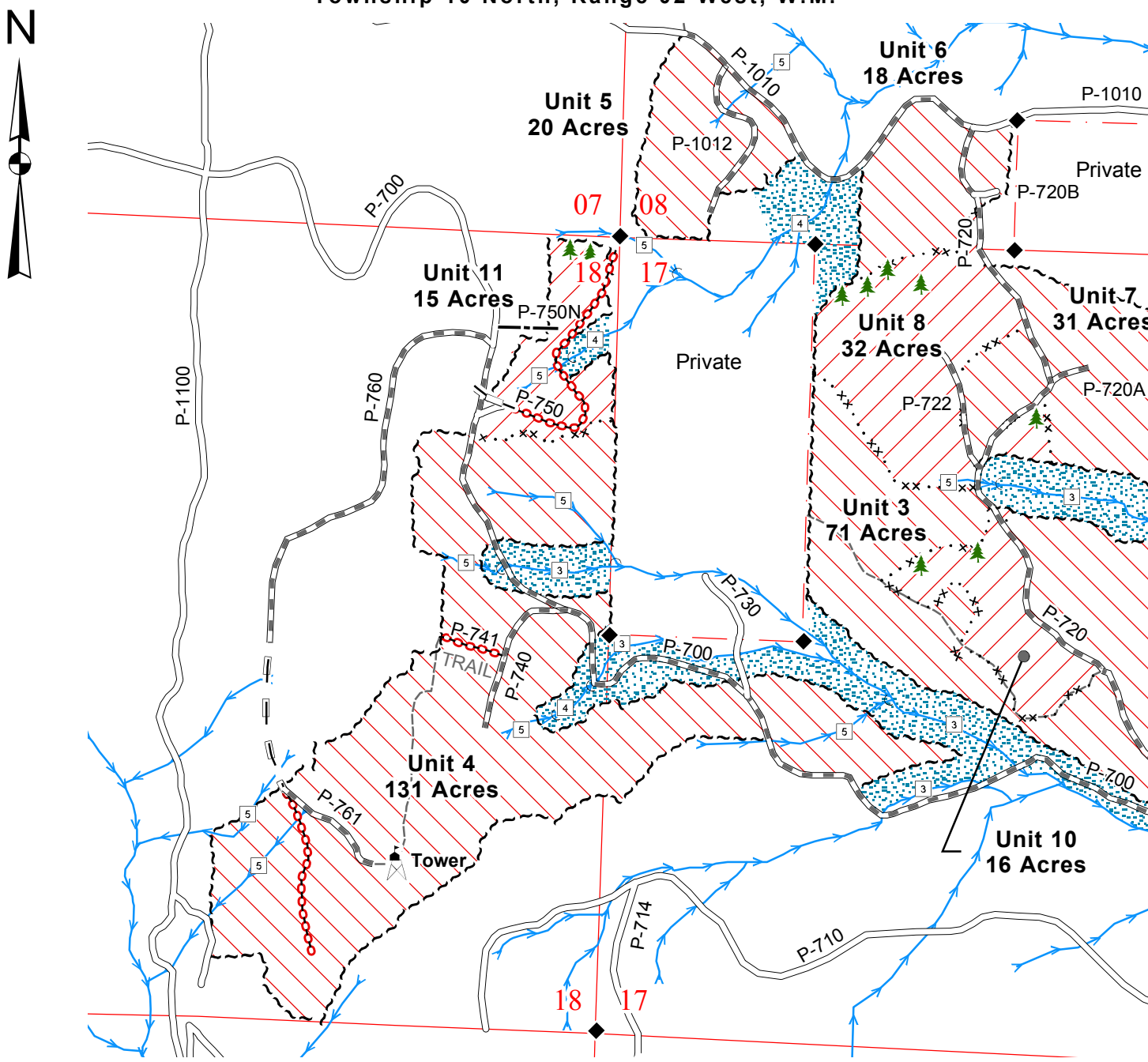
TIMBER SALE MAP

SALE NAME:  
AGREEMENT NO:  
TRUST(S):

CASEY OUTBREAK THINNING & CC  
30-077138  
State Forest Board Transfer (01), Common School (03), Agricultural School (04), & Scientific School (10)

REGION:  
COUNTY(S):  
TOWNSHIP 10 NORTH, RANGE 02 WEST, W.M.

Pacific Cascade  
Cowlitz



Legend

Thinning Area

Clearcut Area

RMZ

Sale Boundary Tags (White)

Special Management Area Boundary Tags (Blue/White)

Existing Roads

Pre-Haul Maintenance

Optional Construction

Optional Reconstruction

Required Abandonment

Trail

Streams

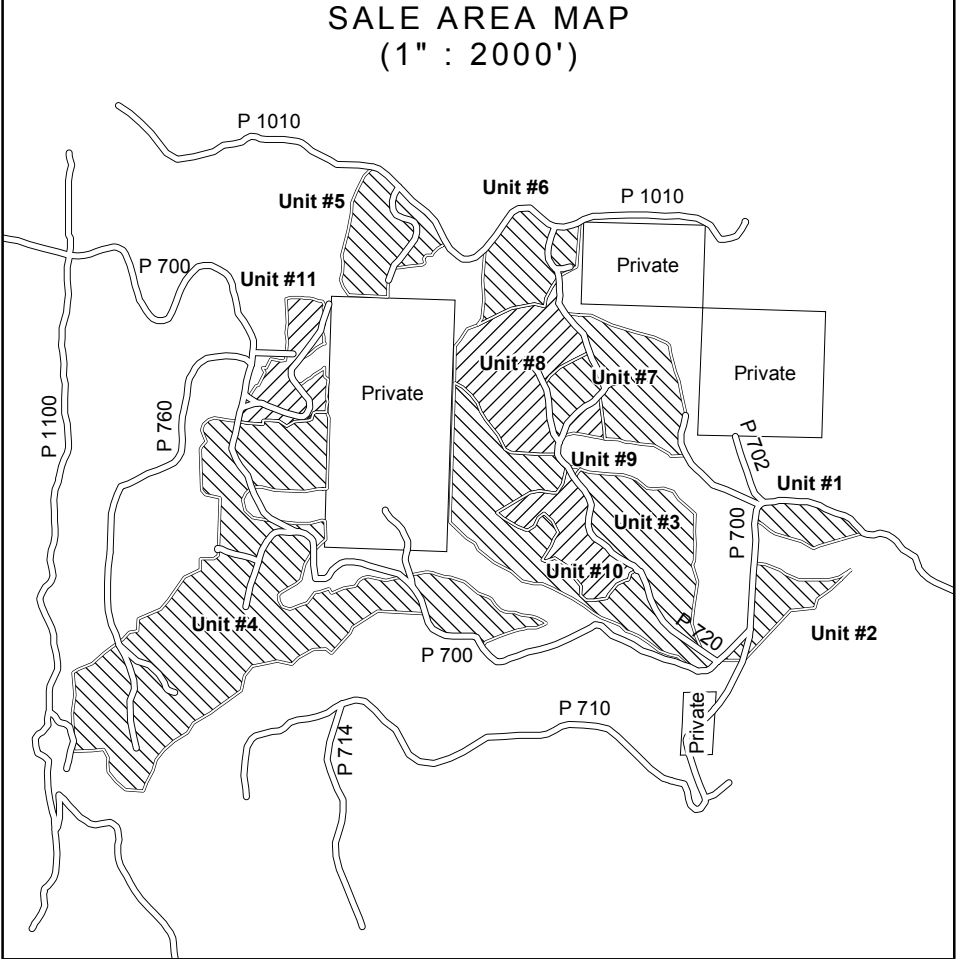
Water Type 1 - 5

Monumented Corner

Radio Tower

Leave Trees

Drawn By: Shawn B.  
Date: May 10, 2005  
Scale: 1" = 1000'  
Elevation: 250ft - 1,300ft



TIMBER NOTICE OF SALE

**SALE NAME:** HANNON WEIGH

**AGREEMENT NO:** 30-075797

**AUCTION:** November 15, 2005 starting at 10:00 a.m., **COUNTY:** King, Snohomish  
South Puget Sound Region Office, Enumclaw, WA

**SALE LOCATION:** Sale located approximately 16 miles northeast of Duvall.

**PRODUCTS SOLD AND SALE AREA:** All timber bounded by white timber sale boundary tags, Spur 200, the 5210 Road and logged areas, except those trees bounded by yellow leave tree area tags in Unit #1; all timber bounded by white timber sale boundary tags, Spur 300, the SLM 5000 Road and logged areas, except those trees bounded by yellow leave tree area tags in Unit #2; plus all trees marked with red paint within the WMZ west of Unit #1 on part(s) of Sections 6 all in Township 26 North, Range 8 East, Sections 36 all in Township 27 North, Range 7 East, Sections 31 all in Township 27 North, Range 8 East, W.M., containing 100 acres, more or less.

**ESTIMATED SALE VOLUMES AND QUALITY:**

Species	Avg DBH	Ring Count	Total MBF	MBF by Grade								UT
				1P	2P	3P	SM	1S	2S	3S	4S	
Douglas fir	27.8	9	2,522				249		1,852	355	66	
Hemlock	15.5	11	1,262						529	618	115	
Red cedar	17.1		671							581	90	
Red alder	14.4		314						33	126	155	
Cottonwood	26.2		83					40	38	5		
Maple	16.6		41							22	19	
Sale Total			4,893									

**MINIMUM BID:** \$1,839,000.00 **BID METHOD:** Sealed Bids

**PERFORMANCE SECURITY:** \$100,000.00 **SALE TYPE:** Lump Sum

**EXPIRATION DATE:** October 31, 2007 **ALLOCATION:** Export Restricted

**BID DEPOSIT:** \$183,900.00 or Bid Bond. Said deposit shall constitute an opening bid at the appraised price.

**HARVEST METHOD:** Ground based equipment, except rubber tired skidders, on slopes less than 40 percent. If Purchaser elects to shovel log, shovel logging shall be in accordance with the Shovel Logging Specifications as identified in Schedule A, which is part of this contract. Falling and Yarding will not be permitted from November 1 to May 31 unless authorized in writing by the Contract Administrator, nor at all on weekends, state recognized holidays and weekdays from 6 pm to 6 am.

**ROADS:** 2.95 stations of required reconstruction. 38.00 stations of pre-haul maintenance. 13.15 stations of required abandonment. 40.65 stations of optional pre-haul maintenance. Purchaser maintenance on the 5210 Road and Spurs 100, 200 and 300. Designated maintenance on all other roads used. Road construction will not be permitted from November 1 to May 31 unless authorized in writing by the Contract Administrator, nor at all on weekends or state recognized holidays. The hauling of forest products will not be permitted from November 1 to May 31 unless authorized in writing by the Contract Administrator, nor at all on weekends, state recognized holidays or 6 pm to 6 am.

**ACREAGE DETERMINATION**

**CRUISE METHOD:** Acreage was determined by traversing boundaries using GPS in Unit #1 and by traversing boundaries with hand compass and EDM laser in Unit #2 with a closure of 1:1,1240. Units #1 and #2 were cruised using variable plot sampling with a BAF of 40 on a 330x250 foot grid. Take trees within the WMZ were 100 percent cruised.

**FEES:** \$64,832.25 is due on day of sale. \$9.00 per MBF is due upon removal. These are in addition to the bid price.

**SPECIAL REMARKS:** Purchaser shall furnish and install a 17 foot steel gate and steel cables per the Gate Detail in the Road Plan. Purchaser shall be responsible to King County for maintenance on the Stossel Creek County Road. The majority of this sale was prepoled, but the sale still contains high quality Douglas-fir, western hemlock and western red cedar. Disregard faded orange pole paint within the sale area.

TIMBER SALE MAP

SALE NAME:

HANNON WEIGH

AGREEMENT NO:

30-075797

TRUST(S):

FOREST BOARD TRANSFER, COMMON SCHOOL

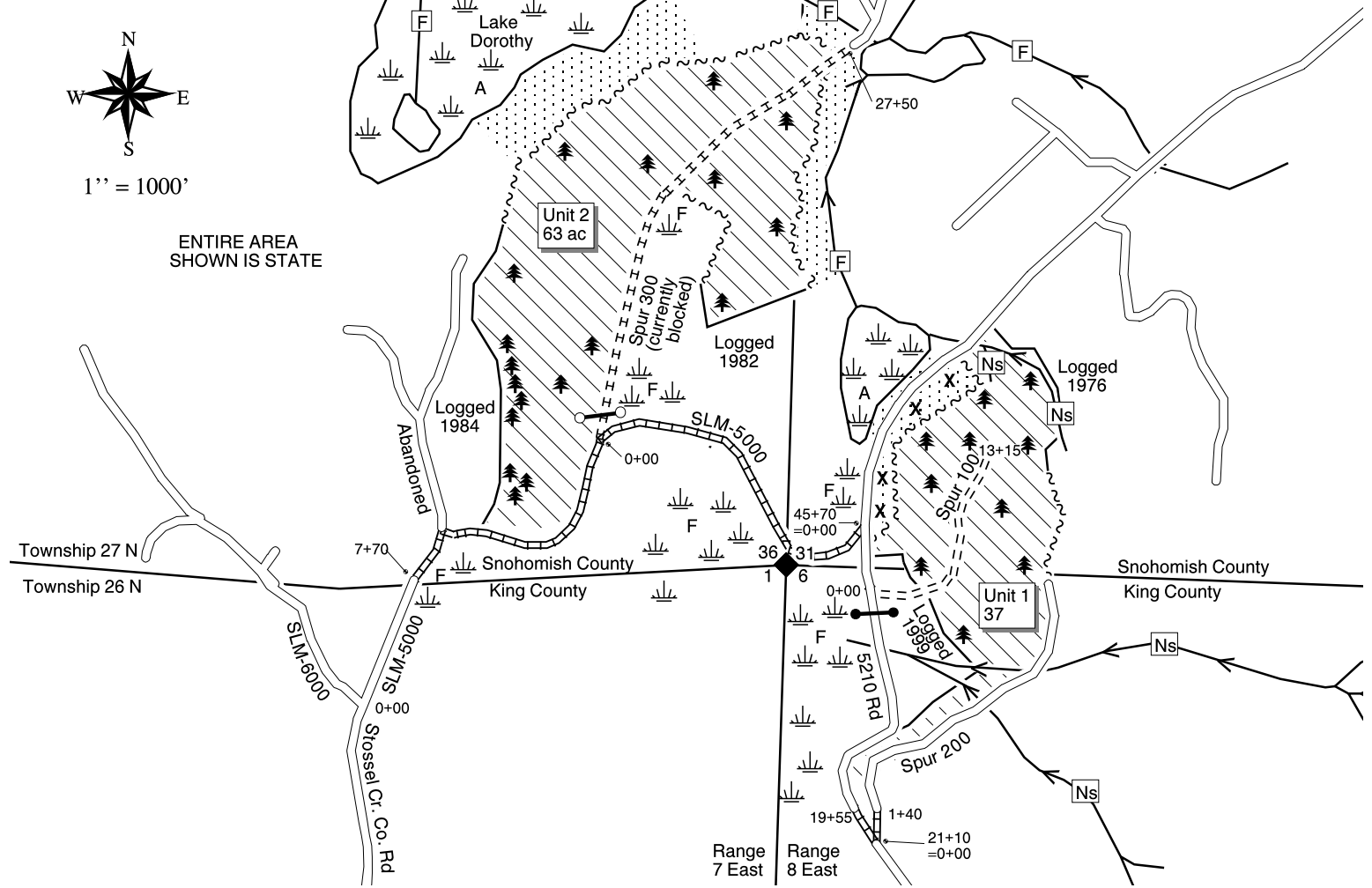
REGION:

SOUTH PUGET SOUND

COUNTY(S):

KING, SNOHOMISH

TOWNSHIP 26 & 27 NORTH, RANGE 7 & 8 EAST, W.M.



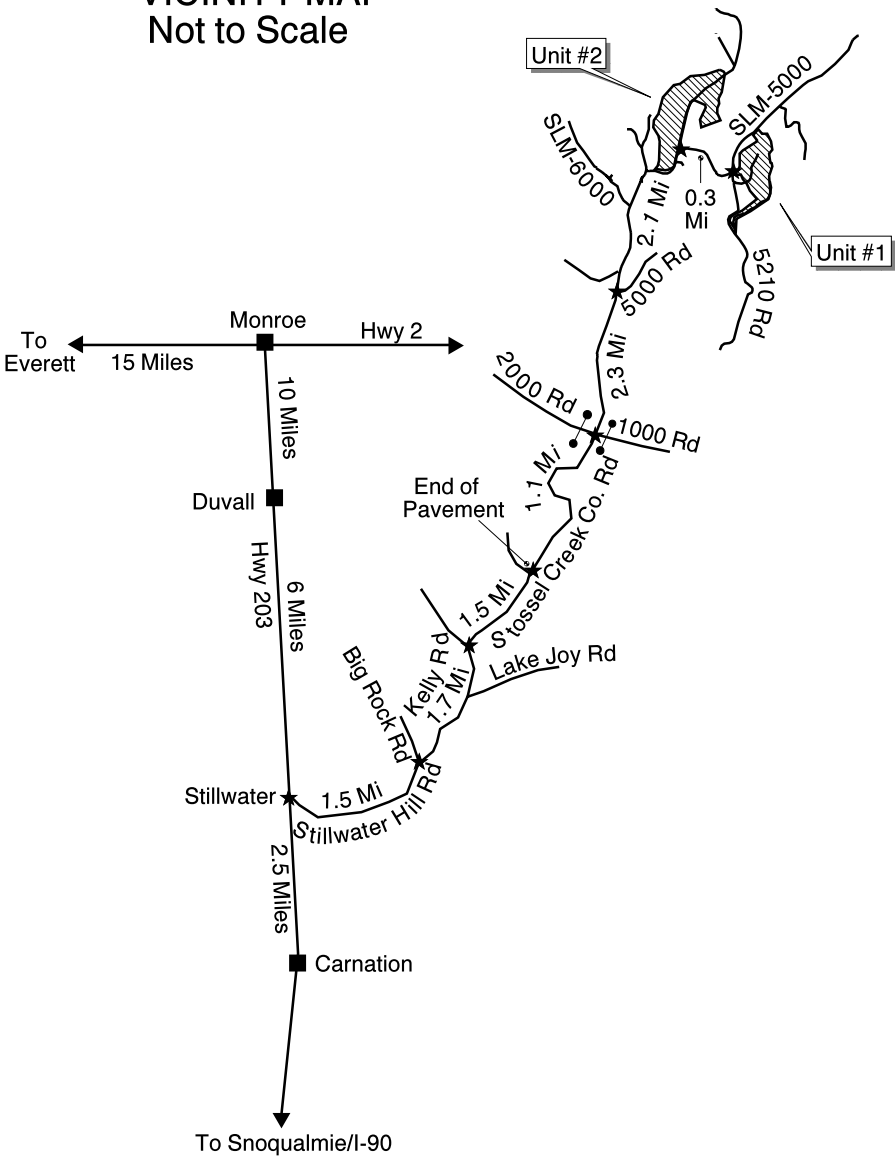
LEGEND

- ~~~~~ White Timber Sale Boundary Tags
- ===== Existing Road
- ===== Required Abandonment
- ===== Required Reconstruction
- ===== Optional Reconstruction
- [Hatched Box] Sale Area
- [Dotted Box] RMZ / WMZ
- Stream
- [Tree Symbol] Leave Tree clumps marked with yellow Leave Tree Area tags
- [X] Take trees marked with red paint
- [Wavy Line Symbol] Wetlands
- [Box with 3] Water Type
- [Diamond] Survey Corner
- [Solid Circle] Locked Gate: Combo 5797 (5210 Road)
- [Open Circle] Gate Installation: Spur 300

ELEVATION RANGE: 600 to 800 feet

Drawn By: A. Stuart  
Date: April 18, 2005

VICINITY MAP  
Not to Scale



TIMBER NOTICE OF SALE

SALE NAME: MICROBREWER

AGREEMENT NO: 30-076976

AUCTION:

November 15, 2005 starting at 10:00 a.m.,  
Southeast Region Office, Ellensburg, WA

COUNTY: Klickitat

SALE LOCATION:

Sale located approximately 16 miles north of Lyle, WA

PRODUCTS SOLD  
AND SALE AREA:

All live standing timber marked with blue paint bounded by white timber sale boundary tags on Unit #1 and all timber bounded by orange right of way tags on part(s) of Sections 6 and 7 all in Township 4 North, Range 13 East, W.M., containing 294 acres, more or less.

ESTIMATED SALE VOLUMES AND QUALITY:

Species	Avg DBH	Ring Count	Total MBF	Total \$/MBF	MBF by Grade								
					1P	2P	3P	SM	1S	2S	3S	4S	UT
Douglas fir	11.3	9	707	\$424.00						26	500	182	
Grand fir	14.5		287	\$220.00						100	144	44	

Species	Avg DBH	Ring Count	Total MBF	Total \$/MBF	MBF by Grade					
					#1	#2	#3	#4	#5	#6
Ponderosa pine	13.7		290	\$88.00			290			
Sale Total			1,284							

MINIMUM BID:

\$424/MBF (est. value \$388,000.00)

BID METHOD:

Sealed Bids

PERFORMANCE  
SECURITY:

\$77,600.00

SALE TYPE:

MBF Scale

EXPIRATION DATE:

November 30, 2007

ALLOCATION:

Export Restricted

BIDDABLE SPECIES:

Douglas fir

BID DEPOSIT:

\$38,800.00 or Bid Bond. Said deposit shall constitute an opening bid at the appraised price.

HARVEST METHOD:

Rubber tired skidder or tractor no larger than a D-5 cat or equivalent. Falling and Yarding will not be permitted from November 30 to April 1 unless authorized in writing by the Contract Administrator in order to protect the soil from compaction and the water quality from degradation due to wet weather conditions.

ROADS:

37.25 stations of required construction. 49.75 stations of required reconstruction. 2.51 stations of required road abandonment. Prospective purchasers should review the road plan in detail. Purchaser must purchase and apply 50 cubic yards of 2 1/2" crushed rock to be obtained from a commercial source. Road construction will not be permitted from November 30 to April 1 unless authorized in writing by the Contract Administrator in order to protect the road surface and subgrade from damage due to wet weather conditions. The hauling of forest products will not be permitted from November 30 to April 1 unless authorized in writing by the Contract Administrator in order to protect the road surface and subgrade from damage due to wet weather conditions.

ACREAGE DETERMINATION

CRUISE METHOD:

Acres were determined using a GPS system. Volume was determined using a variable plot cruise and 32' log grades except for the ponderosa pine which used 16' log grades.

FEES:

\$17,000.00 is due on day of sale. \$9.00 per MBF is due upon removal. These are in addition to the bid price.

SPECIAL REMARKS:

Good mechanical thinning operation. Easy ground, many existing skid trails, very little oversize volume. Purchaser must develop a slash abatement plan for slash within 100' of Brewer county road. To minimize the size of landing piles, logging slash and tops from processing on the landing (as directed by the Contract Administrator) must be returned to the woods and distributed on skidtrails. There is one designated nest site for Western Gray Squirrels bounded out of the sale with timber sale boundary tags. This nest site will have a timing restriction within 350' around it to limit noisy activity (road construction, falling, and yarding) during one of the two following periods: February 1 - April 30, or June 1 - September 15, purchaser's choice. Road reconstruction on private land in Section 12 is bounded by yellow flagging. There are 20 trees within the right of way located on the private land that may need to be removed with this proposal. These trees may be harvested by the landowner prior to operations beginning on this sale.



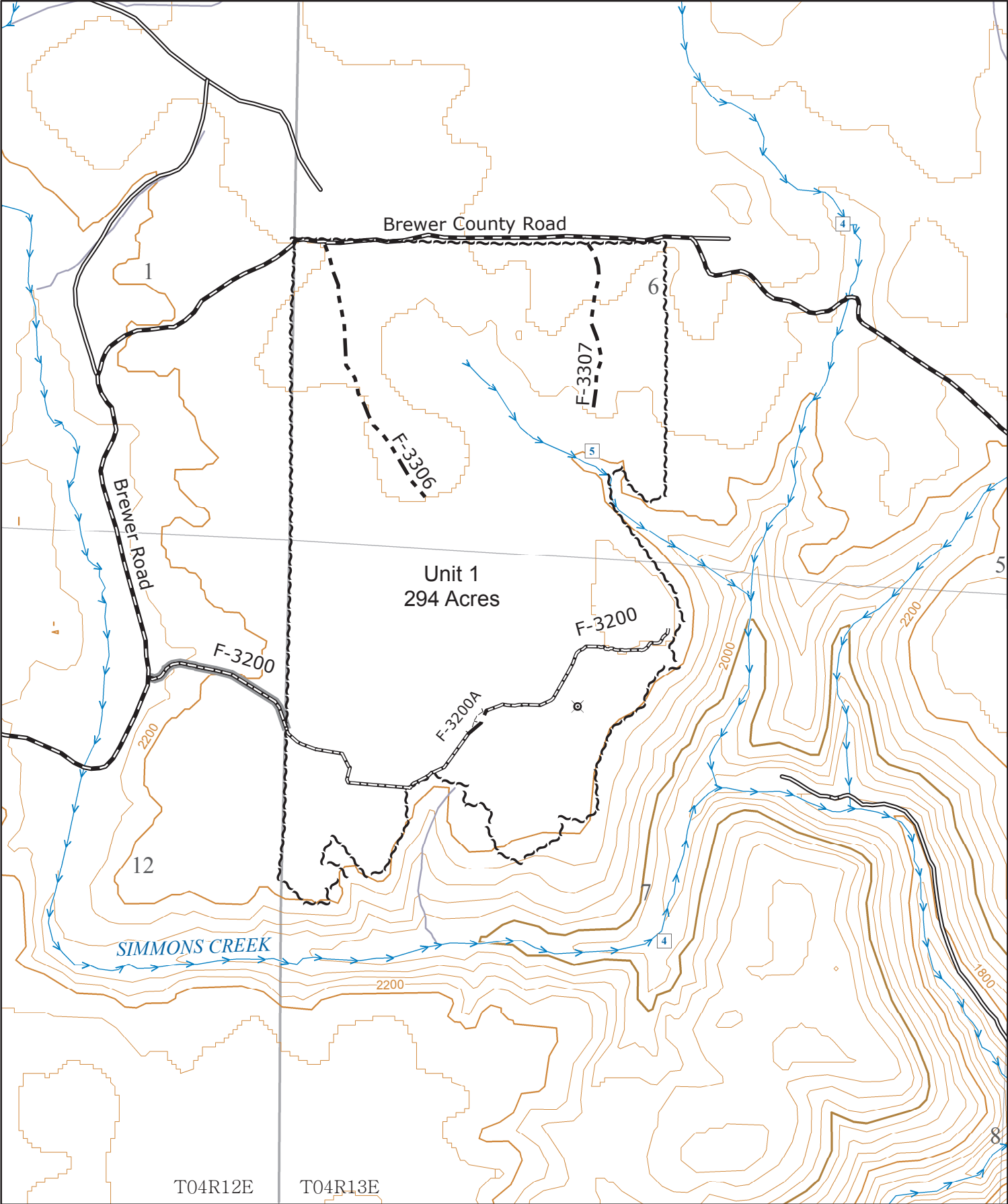
TIMBER SALE MAP

June 17, 2005

Sale Name: Microbrewer  
Agreement Number: 30-076976  
Trust(s): Common School / Scientific School

Region: Southeast  
County(s): Klickitat

Township04North, Range 12 & 13 East, W.M.



1:12,008

0 700 1,400 2,800 Feet



Elevation Range 2200' - 2280'  
Contour Interval 40ft

- ~~~~~ Timber Sale Boundary
- - - Required Construction\*
- . - . Abandonment
- ==== Reconstruction\*
- ==== Reconstruction (Yellow Flagging)
- ==== Existing Road
- ==== County Road
- ⊗ Squirrel Nest

\*Bounded by Right of Way Tags

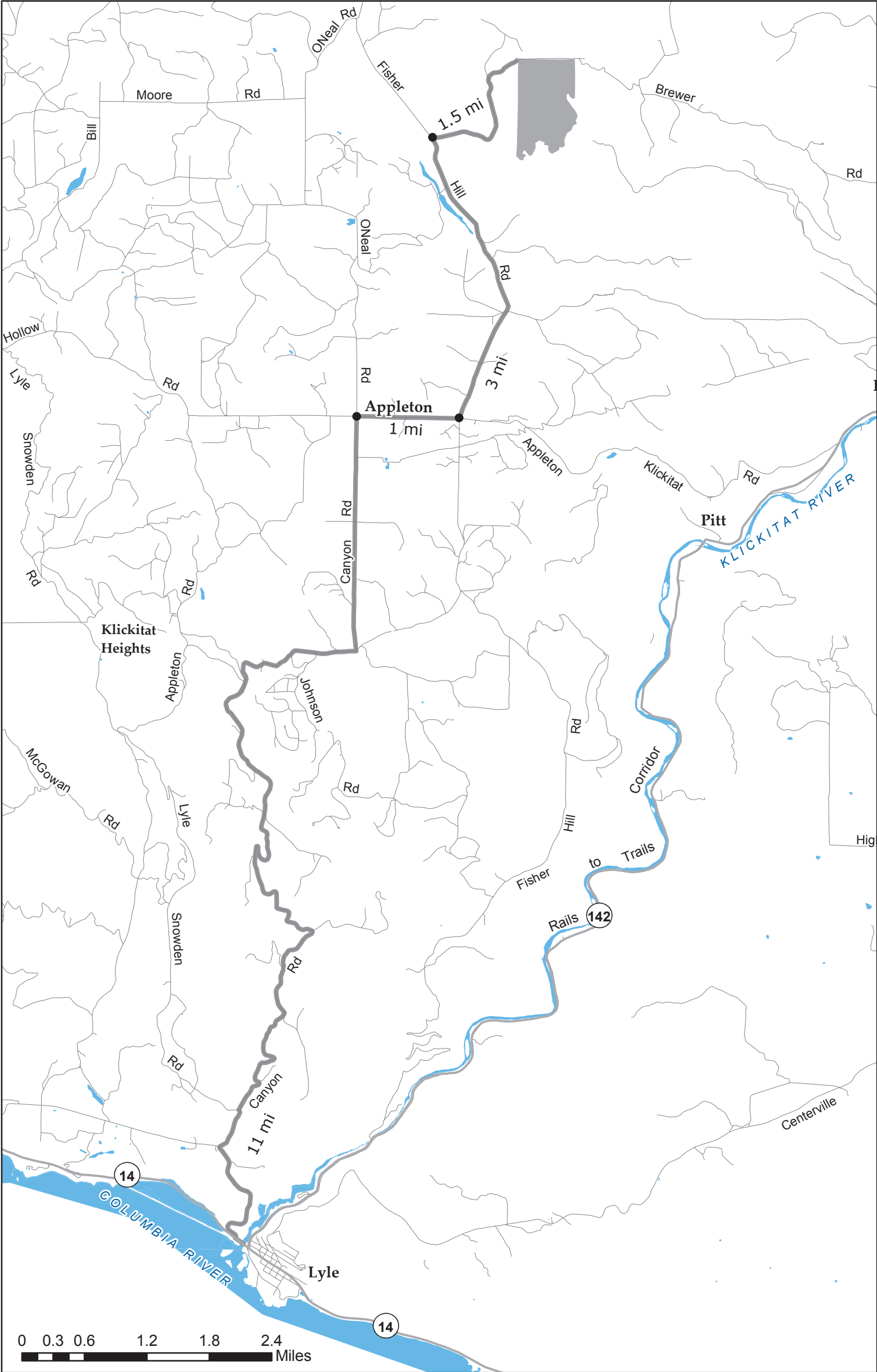
Sale Name: Microbrewer

Agreement Number: 30-076976

Trust(s): Common School / Scientific School

Region: Southeast

County(s): Klickitat



TIMBER NOTICE OF SALE

**SALE NAME:** *OLD TIE GRADE*

**AGREEMENT NO:** *30-076808*

**AUCTION:** November 15, 2005 starting at 10:00 a.m., **COUNTY:** Mason  
South Puget Sound Region Office, Enumclaw, WA

**SALE LOCATION:** Sale located approximately 10 miles north of Hoodspport.

**PRODUCTS SOLD AND SALE AREA:** All timber bounded by white timber sale boundary tags, except those trees marked with blue paint in Units 1, 2, 3 and 4; all timber bounded by white timber sale boundary tags and the 1500 Road Extension, except those trees marked with blue paint in Unit 5; all timber bounded by orange right of way boundary tags on part(s) of Sections 22, 27 and 28 all in Township 23 North, Range 4 West, W.M., containing 166 acres, more or less.

**ESTIMATED SALE VOLUMES AND QUALITY:**

Species	Avg DBH	Ring Count	Total MBF	MBF by Grade								UT
				1P	2P	3P	SM	1S	2S	3S	4S	
Douglas fir	14.4	9	4,979				322		2,172	1,919	566	
Hemlock	11.2		680						65	461	154	
Red alder	12.3		140						10	45	85	
Red cedar	11.9		92							61	31	
White pine	14.4		27						11	12	4	
Maple	16.2		6								6	
Sale Total			5,924									

**MINIMUM BID:** \$2,115,000.00 **BID METHOD:** Sealed Bids

**PERFORMANCE SECURITY:** \$100,000.00 **SALE TYPE:** Lump Sum

**EXPIRATION DATE:** September 30, 2007 **ALLOCATION:** Export Restricted

**BID DEPOSIT:** \$211,500.00 or Bid Bond. Said deposit shall constitute an opening bid at the appraised price.

**HARVEST METHOD:** Ground based and cable with lateral yarding capabilities. Ground based equipment on slopes less than 30 percent and cable equipment with lateral yarding capabilities on slopes greater than 30 percent. If Purchaser elects to shovel log, shovel logging shall be in accordance with the Shovel Logging Specifications as identified in Schedule A, which is part of this contract.

**ROADS:** 8.18 stations of required construction. 78.14 stations of required reconstruction. 61.41 stations of optional construction. 61.41 stations of abandonment of optional construction, if built. Purchaser maintenance on all roads used. Road construction will not be permitted from October 1 to April 30 unless authorized in writing by the Contract Administrator to prevent damage to the subgrade. The hauling of forest products will not be permitted from October 1 to April 30 unless authorized in writing by the Contract Administrator to prevent damage to the subgrade.

**ACREAGE DETERMINATION**

**CRUISE METHOD:** All units were cruised using hand compass and EDM laser. Acreage shown is net calculated from subtracting leave tree clump area and existing road right of way from gross acreage. Closure for Unit 1 is 1:1658, Unit 2 is 1:926, Unit 3 is 1:139, Unit 4 is 1:918 and Unit 5 is 1:136. All units were cruised using a variable plot sample with a BAF of 40 on a 330x330 foot grid.

**FEES:** \$78,493.00 is due on day of sale. \$9.00 per MBF is due upon removal. These are in addition to the bid price.

**SPECIAL REMARKS:** This sale contains Douglas-fir poles and mini peelers. Intermediate supports may be needed to yard some parts of the cable units.

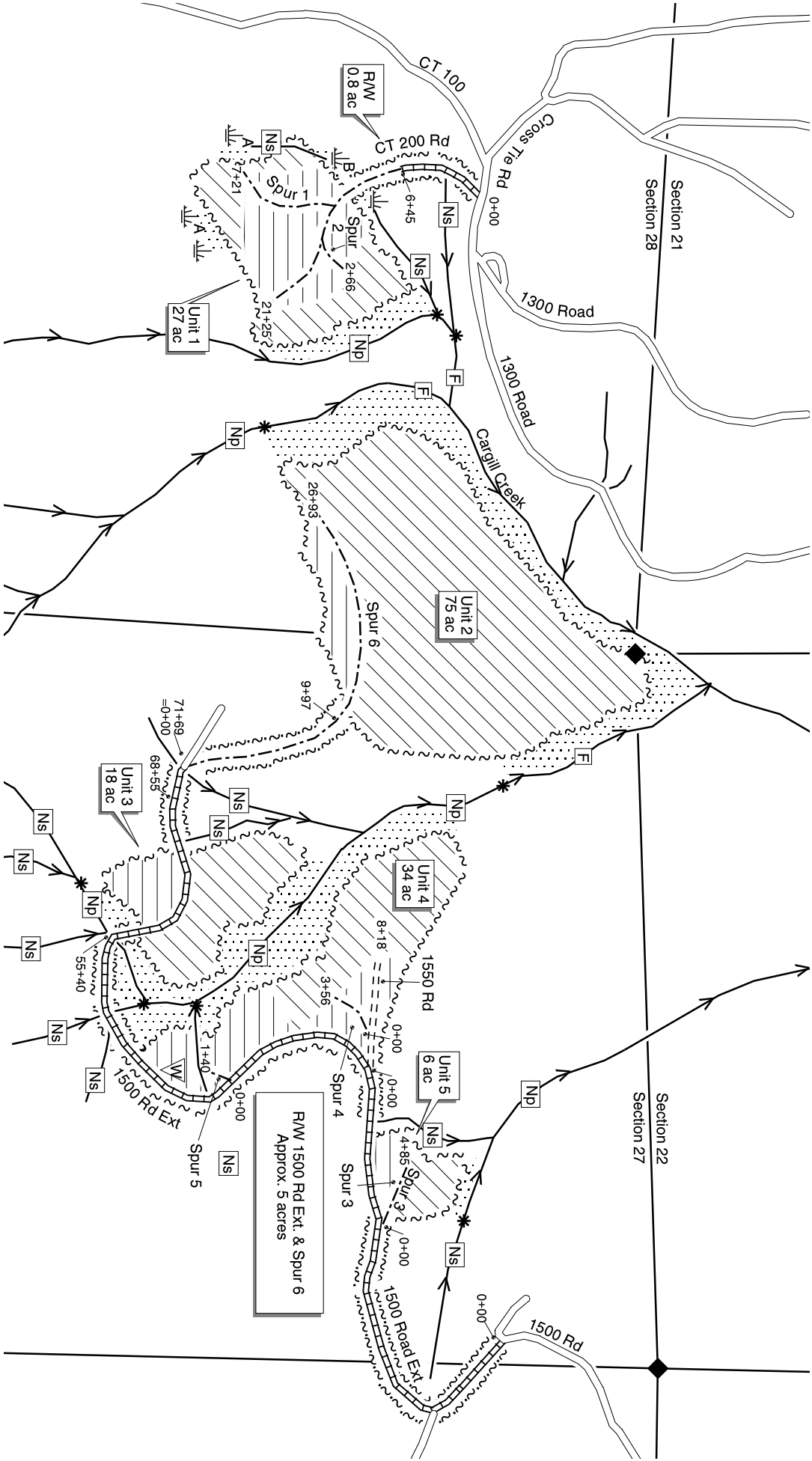


TIMBER SALE MAP

SALE NAME: OLD TIE GRADE  
AGREEMENT NO: 30-076808  
TRUST(S): C.E.P. & R.I. and COMMON SCHOOL

REGION: SOUTH PUGET SOUND  
COUNTY(S): MASON

MAP 1 OF 2  
TOWNSHIP 23 NORTH, RANGE 4 WEST, W.M.



1" = 1000'

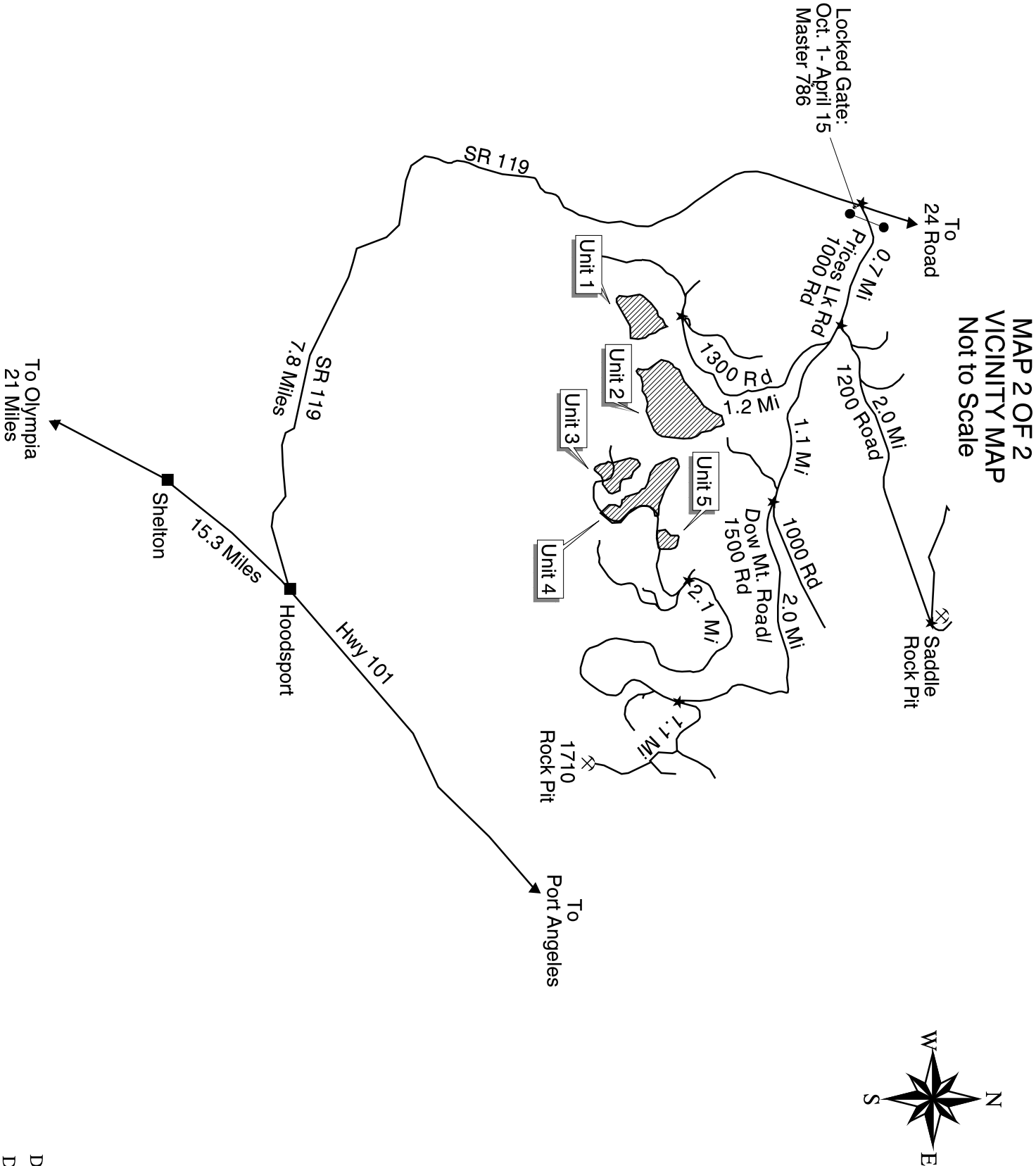
LEGEND

	White Timber Sale Boundary Tags
	Orange Right of Way Boundary Tags
	Cable
	Ground Based
	RMZ/MMZ
	Existing Road
	Required Construction
	Required Reconstruction
	Optional Construction
	Stream
	Water Type
	Wetland and Type
	Survey Corner
	Waste Area

ELEVATION RANGE: 880 to 1680 feet

TIMBER SALE MAP

SALE NAME:	OLD TIE GRADE	REGION:	SOUTH PUGET SOUND
AGREEMENT NO:	30-076808	COUNTY(S):	MASON
TRUST(S):	C.E.P.& R.I. AND COMMON SCHOOL		



TIMBER NOTICE OF SALE

SALE NAME: KATASA

AGREEMENT NO: 30-077503

AUCTION:

November 15, 2005 starting at 10:00 a.m.,  
Northeast Region Office, Colville, WA

COUNTY: Okanogan

SALE LOCATION:

Sale located approximately 7 miles southwest of Loomis, WA in Okanogan County

PRODUCTS SOLD  
AND SALE AREA:

All green conifer species, except ponderosa pine, hardwoods, and areas bounded by yellow Leave Tree Area Boundary Tags, within Units #1, #2, #3, #4, and #5 not banded with orange paint and bounded by white Timber Sale Boundary Tags and red ribbon on part(s) of Sections 16, 17, 18, 19 and 20 all in Township 38 North, Range 25 East, Sections 24 all in Township 38 North, Range 24 East, W.M., containing 299 acres, more or less.

ESTIMATED SALE VOLUMES AND QUALITY:

Species	Avg DBH	Ring Count	Total MBF	MBF by Grade					
				#1	#2	#3	#4	#5	#6
Douglas fir	11.7		1,415	340	798	278			
Larch	11.1		533		15	51	467		
4-5" top (all spp.)			454						454
Lodgepole	9.1		168						168
Spruce	13.5		43			4	39		
Sale Total			2,613						

MINIMUM BID:

\$565,000.00

BID METHOD:

Sealed Bids

PERFORMANCE  
SECURITY:

\$100,000.00

SALE TYPE:

Lump Sum

EXPIRATION DATE:

December 31, 2007

ALLOCATION:

Export Restricted

BID DEPOSIT:

\$56,500.00 or Bid Bond. Said deposit shall constitute an opening bid at the appraised price.

HARVEST METHOD:

Rubber tired skidder, Shovel, Track skidder and Forwarder. Falling and Yarding will not be permitted from March 15 to May 15 unless authorized in writing by the Contract Administrator due to spring breakup.

ROADS:

3.52 stations of required reconstruction. 264.18 stations of pre-haul maintenance required. Road construction will not be permitted from March 15 to May 15 unless authorized in writing by the Contract Administrator due to spring breakup. The hauling of forest products will not be permitted from March 15 to May 15 unless authorized in writing by the Contract Administrator due to spring breakup.

ACREAGE DETERMINATION

CRUISE METHOD:

Acreage determined using GPS methods. Acreage shown above is net harvest acres in harvest units. There are 312 gross acres which includes other existing road right of ways. All species 6.0 - 17.5 inches dbh cruised to a 4.0 inch dib top. All species 17.6 inches dbh and greater cruised to 40% of dob at 16 feet. 4 to 5 inch top (all spp) cruised to between 4.0 and 5.4 inches dib top.

FEES:

\$34,609.00 is due on day of sale. \$9.00 per MBF is due upon removal. These are in addition to the bid price.

SPECIAL REMARKS:

Leave tree areas are designated within Unit #2 only. One bottomless arch installation and gate installation required with this timber sale. See road plan for specifications.



Timber Sale Map

SALE NAME: Katasa

AGREEMENT NO.: 30-077503

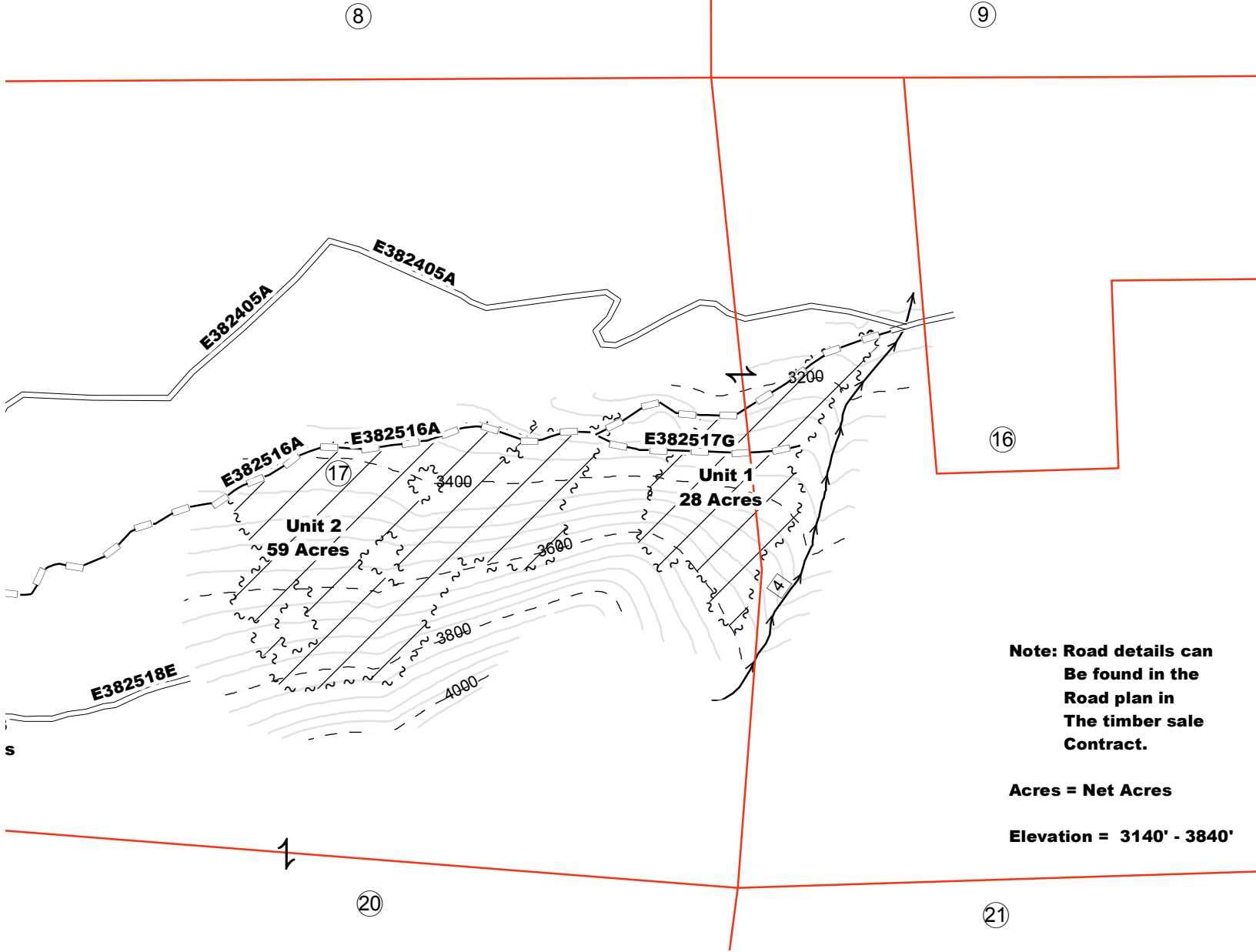
TRUST(S): School, Indemnity

REGION: NORTHEAST

COUNTY: Okanogan

Township 38 North, Range 25 East, W. M.

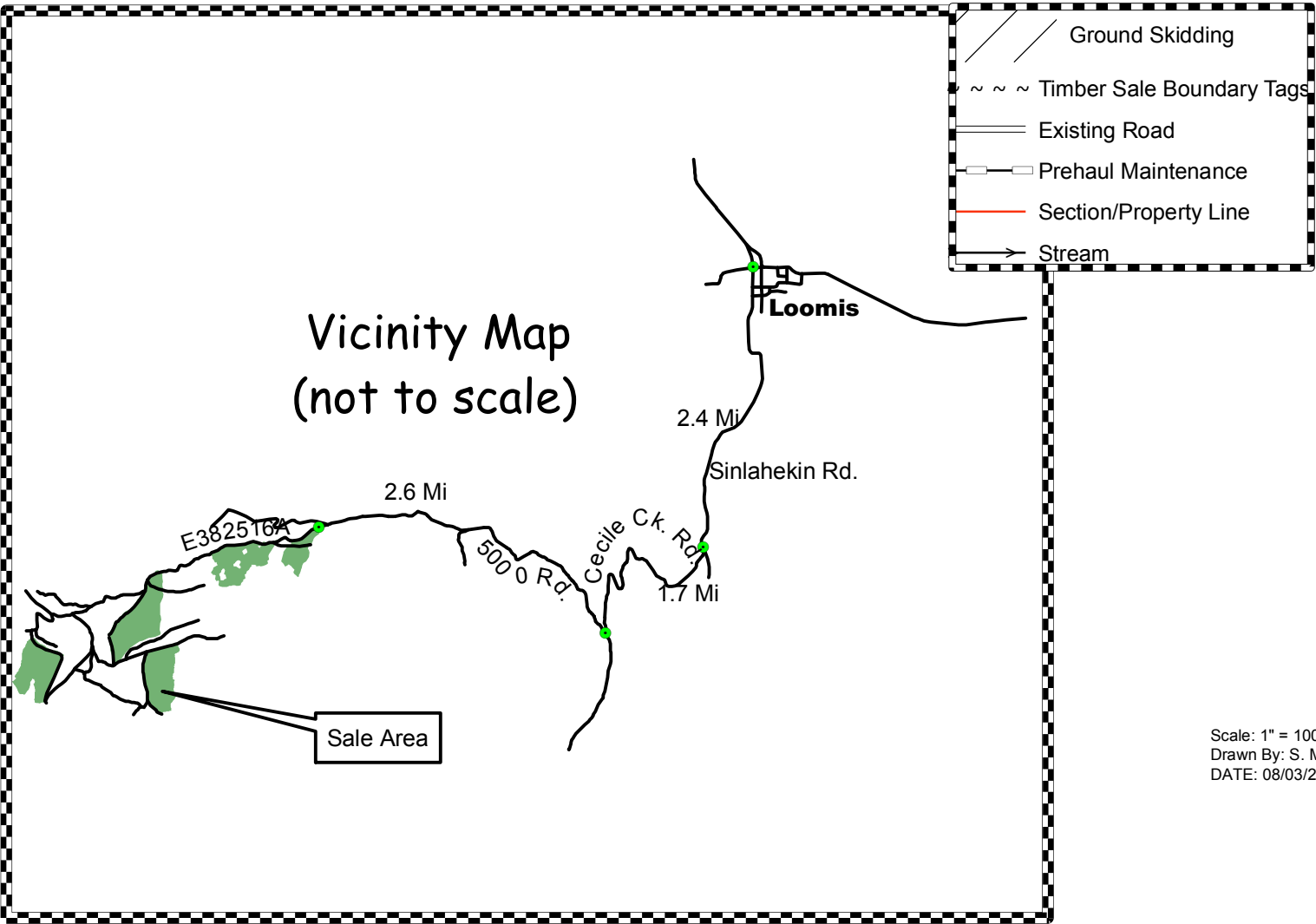
(Map 1 of 2)



**Note: Road details can  
Be found in the  
Road plan in  
The timber sale  
Contract.**

**Acres = Net Acres**

**Elevation = 3140' - 3840'**



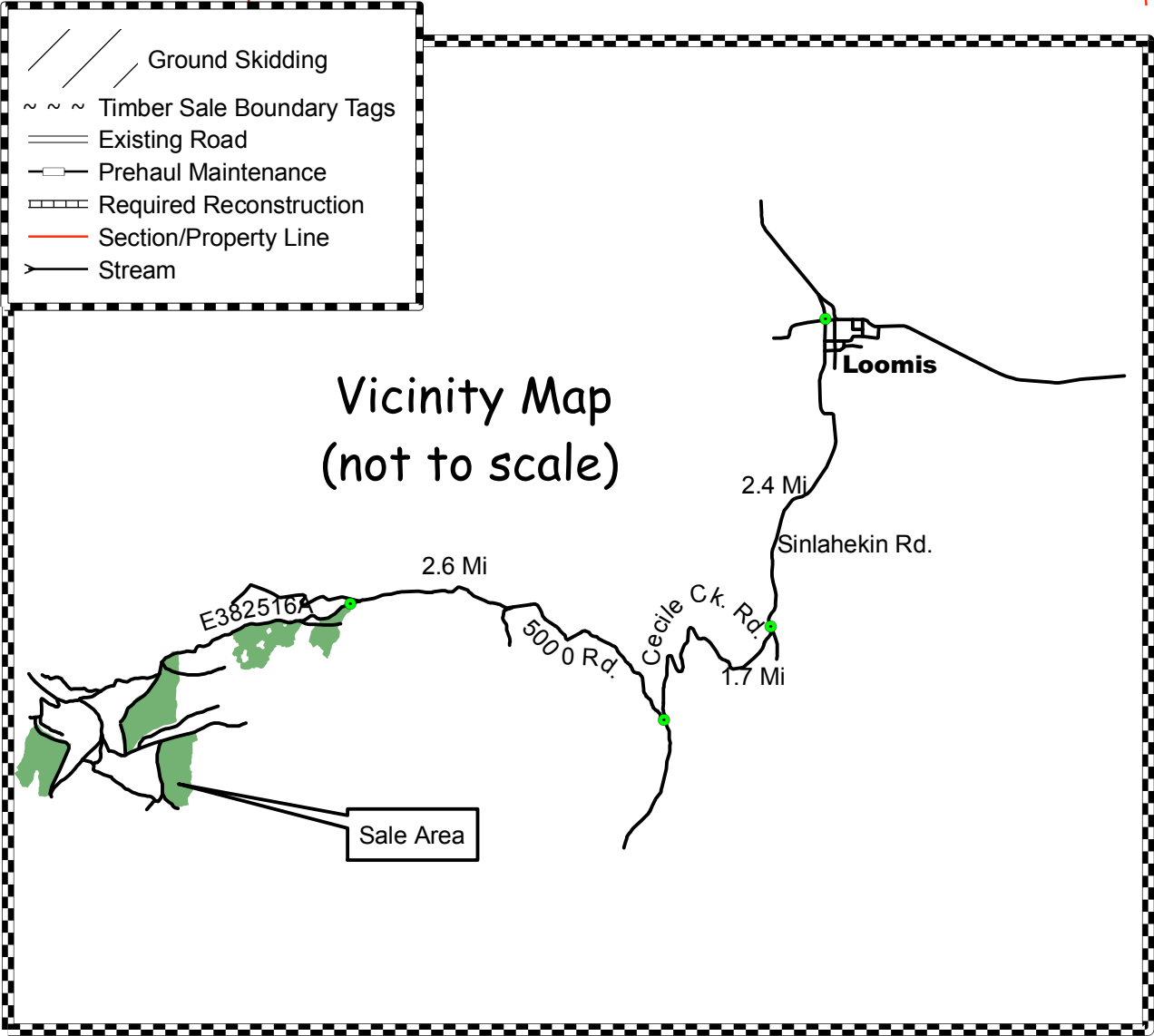
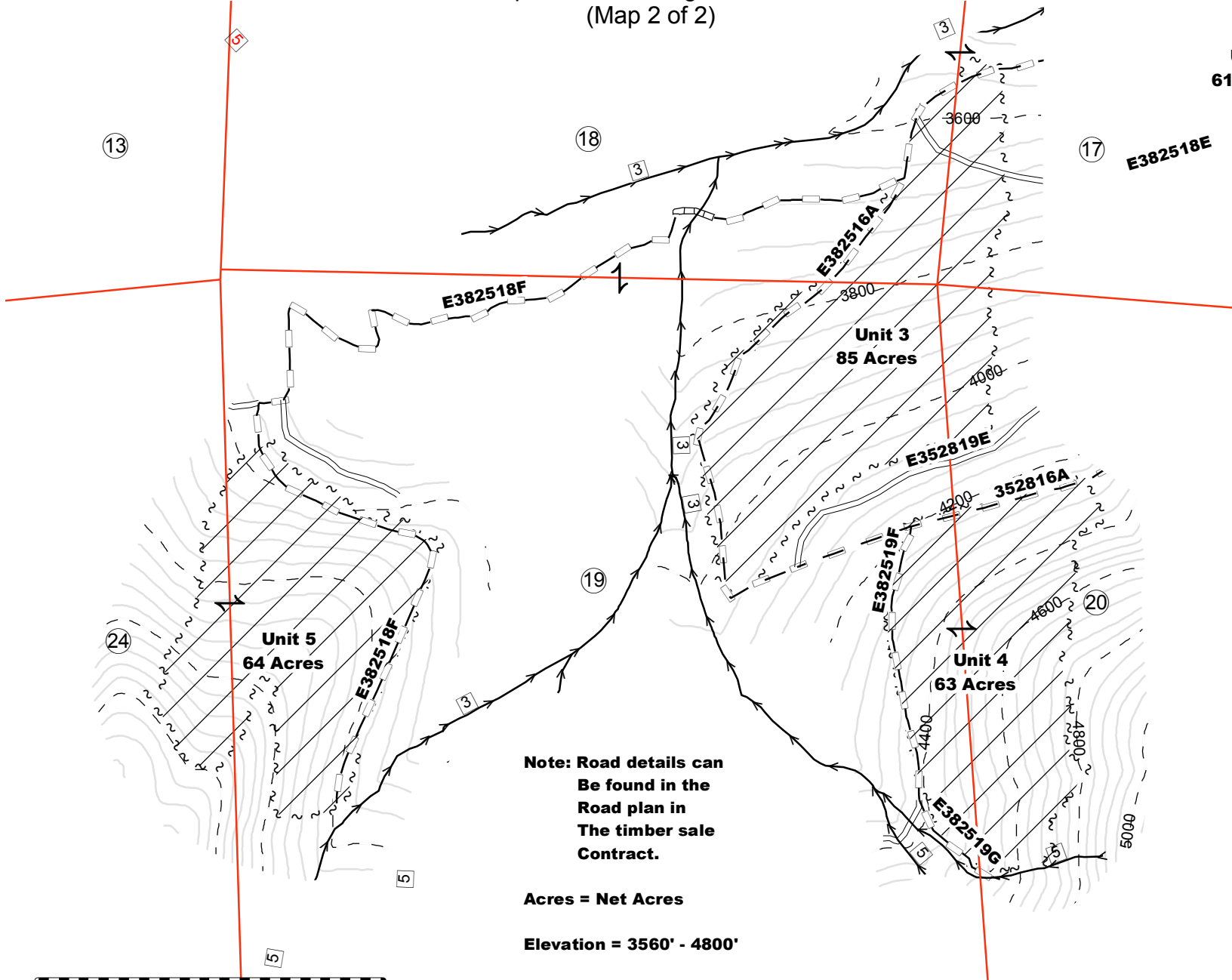
Scale: 1" = 1000'  
Drawn By: S. M.  
DATE: 08/03/2005

Timber Sale Map

SALE NAME: Katasa  
AGREEMENT NO.: 30-077503  
TRUST(S): School, Indemnity

REGION: NORTHEAST  
COUNTY: Okanogan

Township 38 North, Range 25 East, W. M.  
(Map 2 of 2)



Scale: 1" = 1000'  
Drawn By: S. M.  
DATE: 08/03/2005

TIMBER NOTICE OF SALE

**SALE NAME:** HOT SAW

**AGREEMENT NO:** 30-077395

**AUCTION:** November 17, 2005 starting at 10:00 a.m., **COUNTY:** Pacific  
Pacific Cascade Region Office, Castle Rock, WA

**SALE LOCATION:** Sale located approximately 8 miles southeast of Menlo, WA

**PRODUCTS SOLD AND SALE AREA:** All timber, except trees marked with blue paint, trees bounded out by leave tree area tags, snags, down timber existing three years prior to the day of sale, and pre-existing stumps, bounded by the following: timber sale boundary tags, reprod, the M-800 and M-808 roads in Unit #1; timber sale boundary tags, reprod and property lines in Unit #2 on part(s) of Sections 3 and 4 all in Township 12 North, Range 8 West, W.M., containing 86 acres, more or less.

**ESTIMATED SALE VOLUMES AND QUALITY:**

Species	Avg DBH	Ring Count	Total MBF	MBF by Grade								UT
				1P	2P	3P	SM	1S	2S	3S	4S	
Hemlock	14.4	7	1,880						573	1,209	98	
Douglas fir	20.3	7	1,359						849	458	52	
Red alder	12.2		87						20	34	33	
Silver fir	16.3		36						16	18	2	
Spruce	20.3		16							5	11	
Sale Total			3,378									

**MINIMUM BID:** \$875,000.00 **BID METHOD:** Sealed Bids

**PERFORMANCE SECURITY:** \$100,000.00 **SALE TYPE:** Lump Sum

**EXPIRATION DATE:** October 31, 2007 **ALLOCATION:** Export Restricted

**BID DEPOSIT:** \$87,500.00 or Bid Bond. Said deposit shall constitute an opening bid at the appraised price.

**HARVEST METHOD:** Cable harvesting equipment with shovel harvesting equipment being restricted to slopes of 35% and less during dry soil conditions. Intermediate support may be required to prevent soil rutting in Unit #2 off the M 1000 Road. Lead end suspension required on all cable settings. Landing debris shall be piled as directed by the Contract Administrator. Yarding may be suspended at the discretion of the Contract Administrator when soil rutting exceeds four inches as measured from the natural ground line when there is potential for damage to any public resource. Purchaser shall follow the Harvesting Specifications as listed in Schedule L. Shovel yarding will not be permitted from September 30 to May 1 unless authorized in writing by the Contract Administrator.

**ROADS:** 34.31 stations of optional construction. 2.4 miles of required pre-haul maintenance. 39.25 stations of optional pre-haul maintenance. Purchaser shall obtain, the 1 1/4 inch and 2 1/2 inch crushed rock to be applied, from an approved commercial source. Rock is available at no charge from the State's Sawmill Quarry in Sec. 4, T12N, R8W for the remainder of the required amounts of rock. Any damage to any road resulting from any harvest operations will be repaired at Purchasers expense unless authorized by the Contract Administrator. Road construction will not be permitted from September 30 to May 1 unless authorized in writing by the Contract Administrator.

**ACREAGE DETERMINATION**

**CRUISE METHOD:** Acres were determined by compass and laser range finder for Unit #1 with an error of closure of 1:169, and GPS for Unit #2. The sale area was cruised using a variable plot method. Harvesting activities are estimated to be 30% ground based harvesting and 70% cable.

**FEES:** \$44,760.00 is due on day of sale. \$9.00 per MBF is due upon removal. These are in addition to the bid price.

**SPECIAL REMARKS:** If Purchaser chooses to tailhold on private property, Purchaser shall obtain permit(s) and assumes responsibility for all costs associated with permit(s). Purchaser must provide the State with a copy of the executed permit(s) or a letter from the private entity indicating that a satisfactory tailhold permit(s) has been consummated between Purchaser and private entity.

TIMBER SALE MAP

SALE NAME: HOT SAW

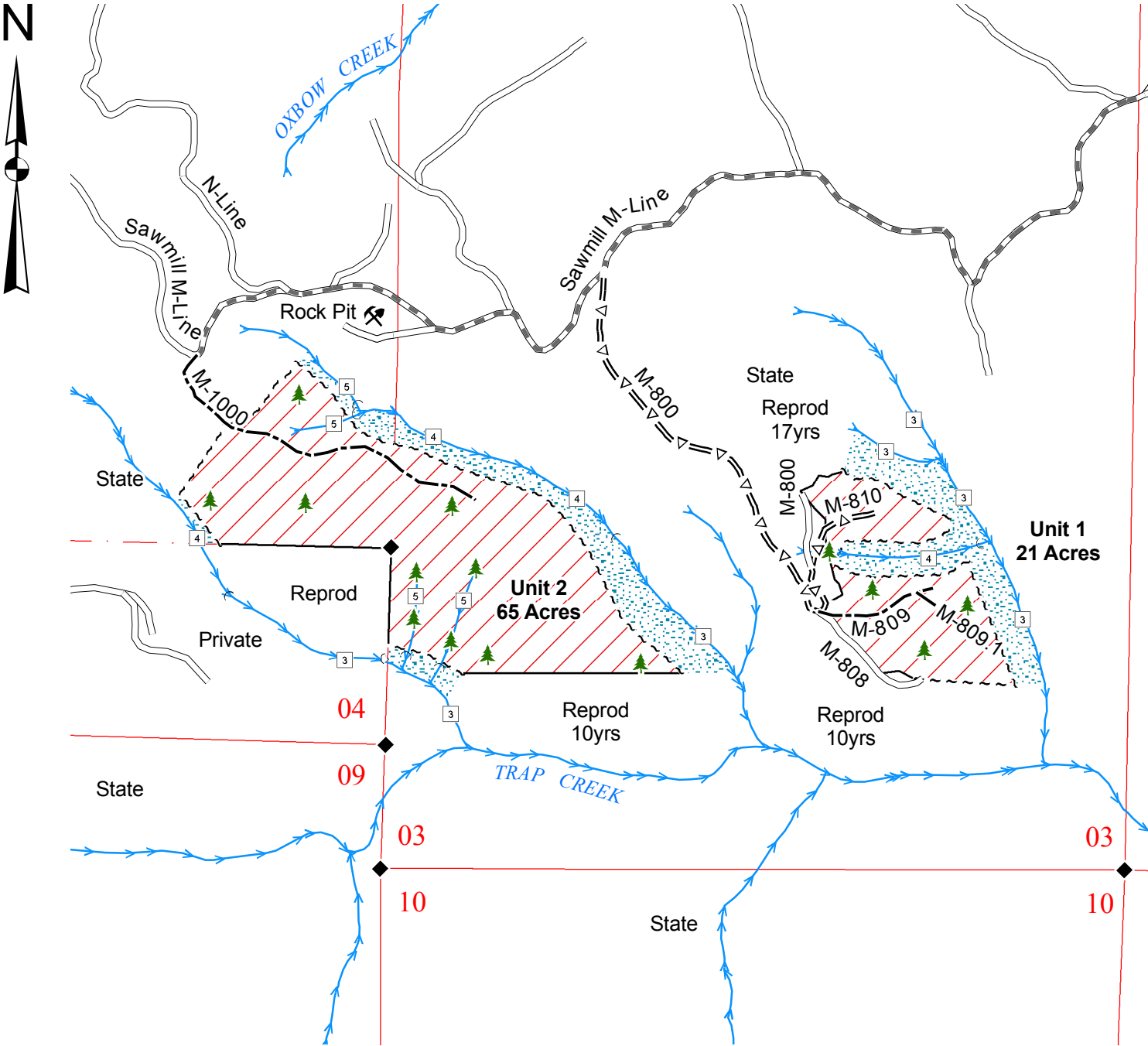
AGREEMENT NO: 30-077395

TRUST(S): State Forest Board Transfer (01) & Scientific School (10)

REGION: Pacific Cascade

COUNTY(S): Pacific

Township 12 North, Range 08 West, W.M.



Legend

Sale Area

RMZ

Sale Boundary Tags (White)

Existing Roads

Pre-haul Maintenance

Optional Pre-Haul Maint.

Optional Construction

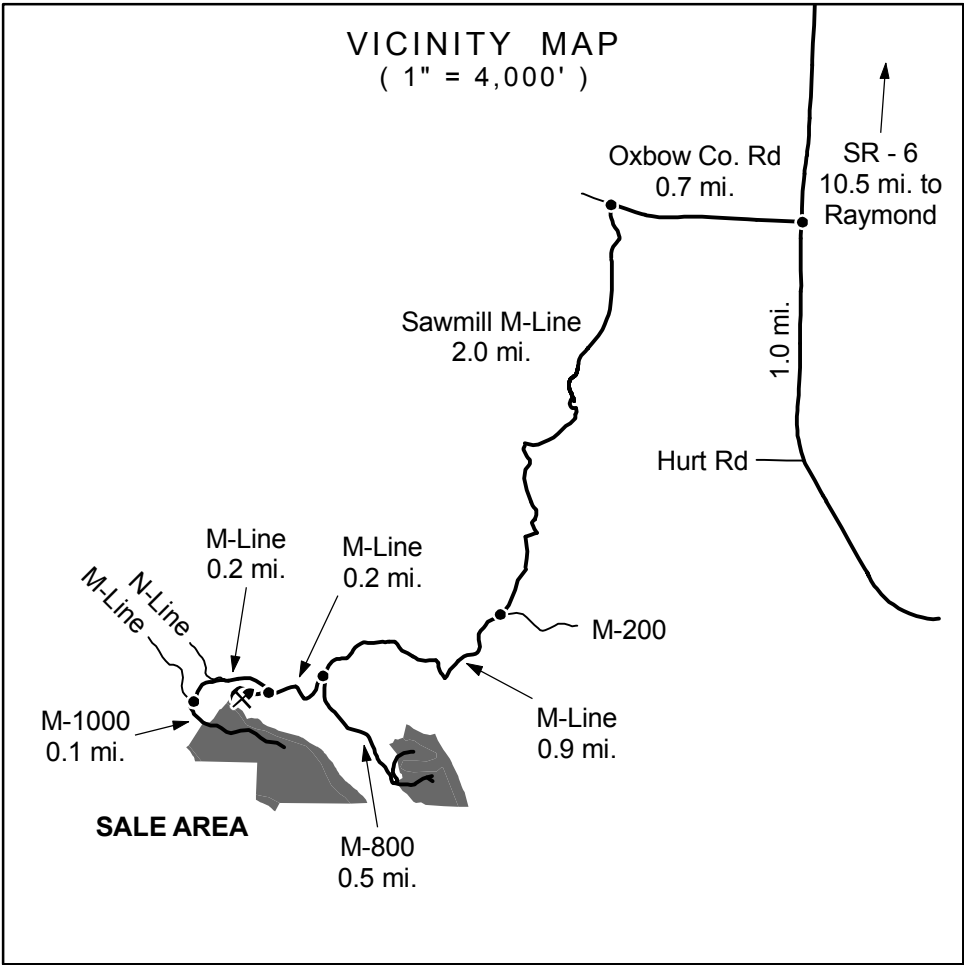
Streams

Water Type 1 - 5

Monumented Corner

Leave Trees

Existing Rock Pit



Drawn By: Shawn B.

Date: May 19, 2005

Scale: 1" = 1000'

Elevation: 480 ft. - 1,360ft.



TIMBER NOTICE OF SALE

**SALE NAME:** LOST HORIZONS

**AGREEMENT NO:** 30-077127

**AUCTION:** November 14, 2005 starting at 10:00 a.m., **COUNTY:** Skagit  
Northwest Region Office, Sedro Woolley, WA

**SALE LOCATION:** Sale located approximately 8 miles east of Big Lake

**PRODUCTS SOLD  
AND SALE AREA:** All timber, except trees marked with a ring of blue paint at DBH and root collar, trees tagged out by yellow leave tree area tags, and cedar snags, bounded as follows: by white timber sale boundary tags, blue special management tags, the BD-ML Road, and plantations in Unit #1; by white timber sale boundary tags and the BD-ML Road in Unit #2; by white timber sale boundary tags, orange right of way tags, and plantation in Unit #3; all timber bound by orange right of way tags and plantation; all trees marked with orange paint at DBH and root collar located beyond the blue special management boundary tags in the WMZ adjacent to the west boundary of Unit #1 on part(s) of Sections 16 all in Township 33 North, Range 6 East, W.M., containing 101 acres, more or less.

**ESTIMATED SALE VOLUMES AND QUALITY:**

Species	Avg DBH	Ring Count	Total MBF	MBF by Grade								UT
				1P	2P	3P	SM	1S	2S	3S	4S	
Hemlock	14	6	3,254						1,306	1,575	373	
Red alder	13		503						120	104	279	
Red cedar	16		289							250	39	
Cottonwood	13		50					17	9		24	
Douglas fir	24	6	37						29	8		
Maple	8		8								8	
Silver fir	23		1							1		
Sale Total			4,142									

**MINIMUM BID:** \$959,000.00 **BID METHOD:** Sealed Bids

**PERFORMANCE  
SECURITY:** \$100,000.00 **SALE TYPE:** Lump Sum

**EXPIRATION DATE:** September 30, 2007 **ALLOCATION:** Export Restricted

**BID DEPOSIT:** \$95,900.00 or Bid Bond. Said deposit shall constitute an opening bid at the appraised price.

**HARVEST METHOD:** Cable and Shovel. Cable; cable or shovel on slopes 25% or less. Falling and Yarding will not be permitted from November 1 to March 31 unless authorized in writing by the Contract Administrator (this pertains to ground-based equipment only) to reduce soil damage and erosion.

**ROADS:** 43.49 stations of required construction. 20.50 stations of optional construction. 20.50 stations of road to be abandoned if built.

Development of an existing hardrock source (DC-1303 Hardrock Pit) at milepost 0.3 of the DC-13 Road will involve clearing, stripping, drilling, shooting, and processing rock to generate approximately 484 cubic yards of riprap and approximately 7,330 cubic yards of 3-inch-minus ballast. This rock is available at no cost on State land in Section 25, Township 33 North, Range 6 East, W.M.

Road construction, road abandonment and the hauling of rock will not be permitted from November 1 to March 31 unless authorized in writing by the Contract Administrator to reduce soil damage and siltation. The hauling of forest products will not be permitted from November 1 to March 31 unless authorized in writing by the Contract Administrator to reduce soil damage and siltation.

**ACREAGE DETERMINATION**

**CRUISE METHOD:** Acres determined by GPS. 105.9 acres gross. 4.7 acres deducted for green tree retention clumps, and existing road. 101.2 acres net. Cruised using variable plot method in Units #1, #2, and #3. ITS used for individual orange marked take trees in the WMZ. Expansion factor used is 46.95. Sighting height is 4.5 feet. Grid size plot spacing is 400 X 200 feet in Units #1, #2 and #3. Plot ratio cruise count is 1:1 in Units #1, #2 and #3. 11 plots were taken in Unit #1, 7 plots taken in Unit #2, 37 plots taken in Unit #3, and 1 plot taken in WMZ for the orange marked take trees, for a total of 56 plots.



## TIMBER NOTICE OF SALE

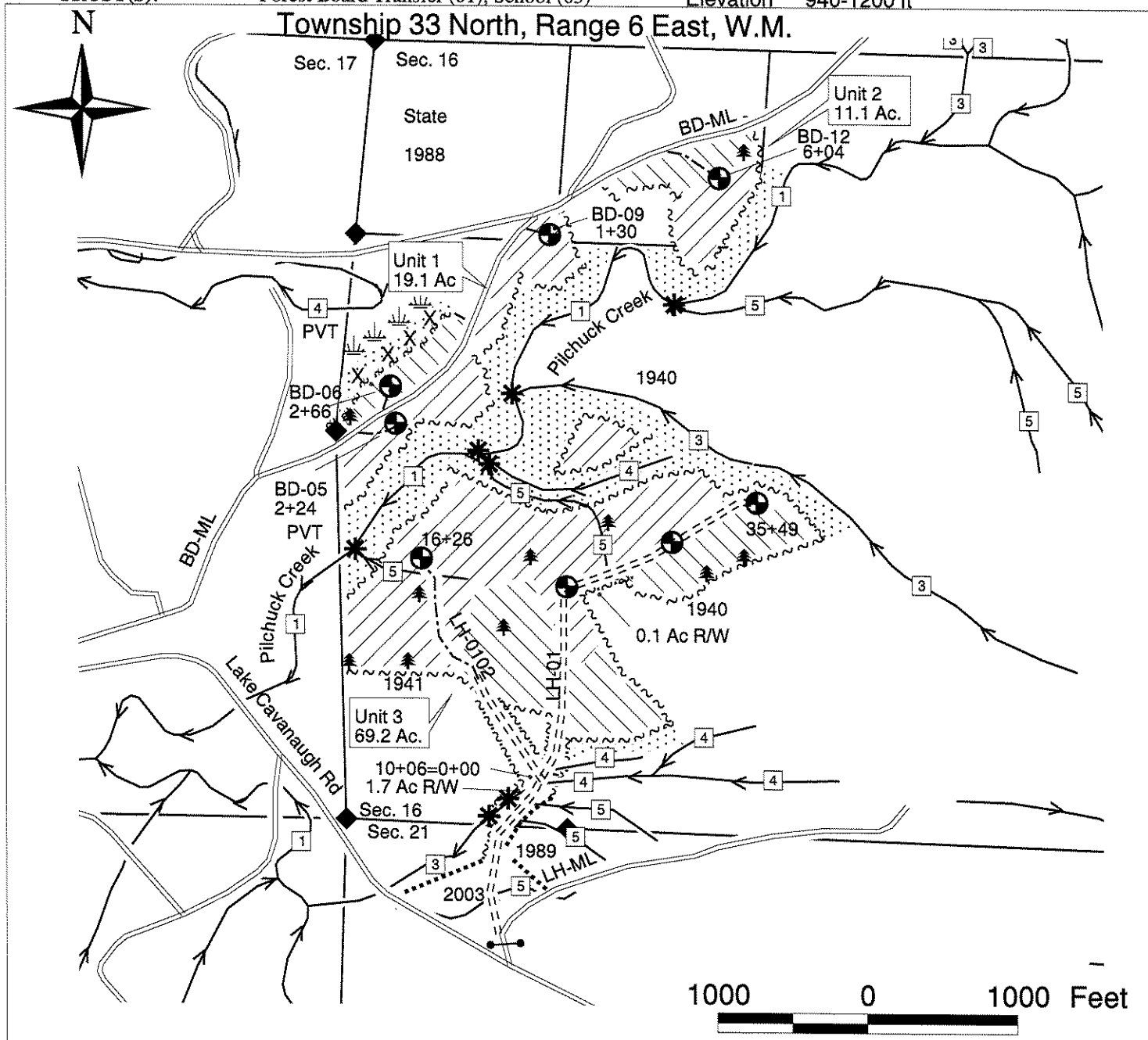
**FEES:** (1) Purchaser shall furnish the State with a check made payable to Mid Valley Resources, INC. in the amount of \$834.00 on the day of sale, for Permit Number 55-076892.  
(2) \$54,881.50 is due on day of sale. \$9.00 per MBF is due upon removal. These are in addition to the bid price.

**SPECIAL REMARKS:** (1) WMZ has individual removal trees marked with orange paint. (2) Blue special management tags mark the start of the WMZ area. (3) A ¼ corner is located in the leave tree clump on the west edge of Unit #1, which should not be disturbed by any operations. (4) A maximum of three corridors through the type 4 buffer in Unit #3 will be allowed to yard the isolated parcel on the north end of the unit. (5) Purchaser shall have Mid Valley Resources, INC. named as an additional insured on all general liability, BAP, excess and umbrellas insurance policies. All policies shall provide coverage on a primary basis for Permit Number 55-076892. (6) No hauling will be allowed on North Shore Drive. This condition will not be waived.

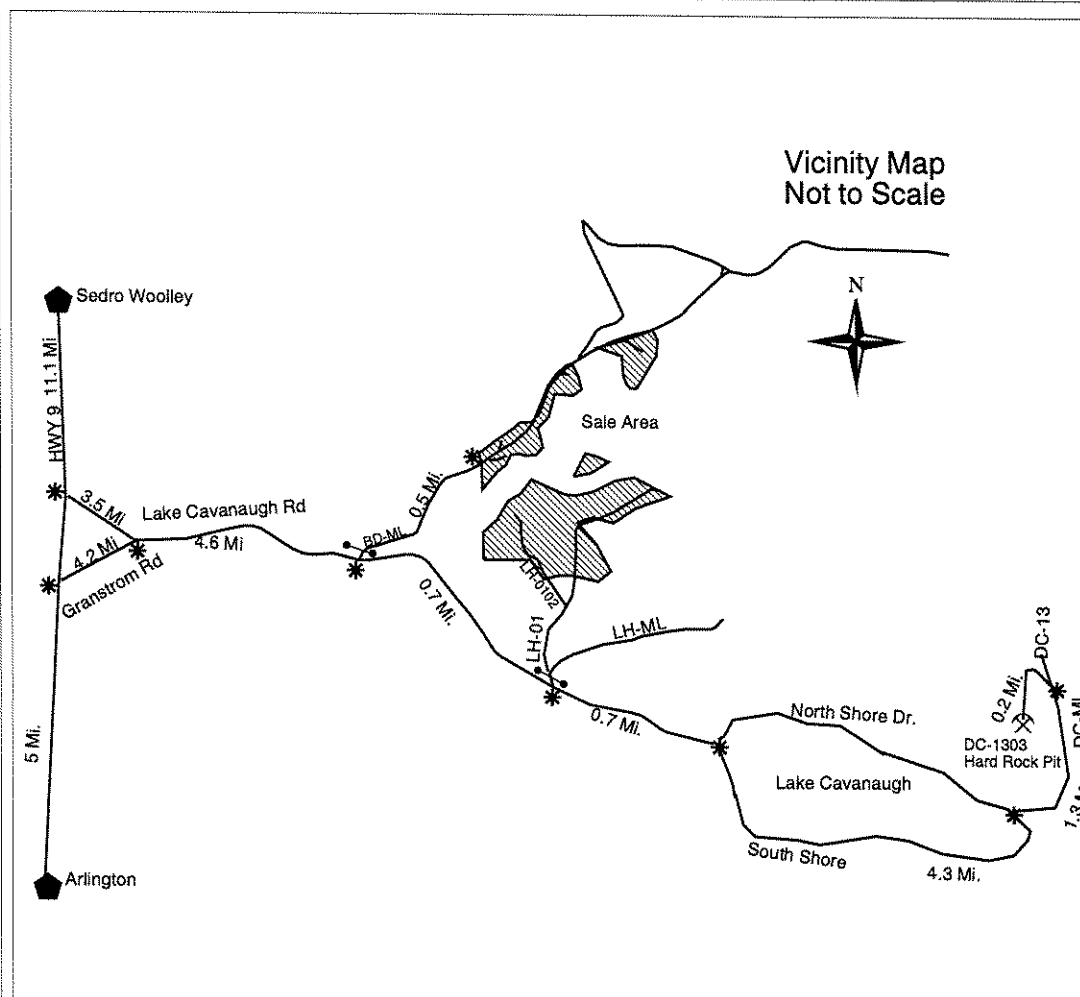
# TIMBER SALE MAP

SALE NAME: Lost Horizons  
 AGREEMENT NO: 30-077127  
 TRUST(S): Forest Board Transfer (01), School (03)

REGION: Northwest  
 COUNTY(S): Skagit  
 Elevation 940-1200 ft



Legend	
Symbols	
	Landing
	Leave Tree Clumps
	Stream Type Break
	Wetlands
	Water Type
	Take Trees
	Rock Pit
	Gate
	Property Corner
	Timber Sale Boundary
	Right of Way
	Special Management
	Plantation Edge
Roads	
	Existing Road
	Optional Construction
	Required Construction
Streams	
	Type 1-5
	RMZ / WMZ
Logging Methods	
	Cable
	Shovel





TIMBER NOTICE OF SALE

**SALE NAME:** BUTLER HILL

**AGREEMENT NO:** 30-077244

**AUCTION:** November 14, 2005 starting at 10:00 a.m., **COUNTY:** Skagit  
Northwest Region Office, Sedro Woolley, WA

**SALE LOCATION:** Sale located approximately 4 miles northwest of Sedro-Woolley

**PRODUCTS SOLD AND SALE AREA:** All timber, except trees marked with blue paint at DBH and root collar, trees tagged out with yellow leave tree tags, cedar snags, dead and down cedar trees, logs, and stumps, and other blow down trees and snags that do not have needles or small limbs, bounded by white timber sale boundary tags and blue special management tags in Unit #1 and Unit #2; all trees marked with orange paint at DBH and root collar within areas tagged out with blue special management tags in Unit #1 and Unit #2 on part(s) of Sections 10 all in Township 35 North, Range 4 East, W.M., containing 61 acres, more or less.

**ESTIMATED SALE VOLUMES AND QUALITY:**

Species	Avg DBH	Ring Count	Total MBF	MBF by Grade								UT
				1P	2P	3P	SM	1S	2S	3S	4S	
Douglas fir	19	6	593				18		411	140	24	
Red alder	17		503						294	84	125	
Red cedar	13		197							152	45	
Maple	18		121						9	72	40	
Birch	11		61						9	12	40	
Hemlock	10	6	26							19	7	
Sale Total			1,501									

**MINIMUM BID:** \$523,000.00 **BID METHOD:** Sealed Bids

**PERFORMANCE SECURITY:** \$100,000.00 **SALE TYPE:** Lump Sum

**EXPIRATION DATE:** September 30, 2006 **ALLOCATION:** Export Restricted

**BID DEPOSIT:** \$52,300.00 or Bid Bond. Said deposit shall constitute an opening bid at the appraised price.

**HARVEST METHOD:** Cable and Shovel. Cable; cable or shovel on slopes 25% or less. Yarding will not be permitted from November 1 to March 31 unless authorized in writing by the Contract Administrator (this pertains to ground-based yarding only) to reduce soil damage and erosion.

**ROADS:** 26.20 stations of optional construction. 14.04 stations of optional reconstruction. 23.47 stations of new road to be abandoned if built.

Development of an existing hardrock source (Doc Spratley Hardrock Pit) at milepost 0.5 of the ML-1000 Road will involve drilling, shooting, and processing rock to general riprap. Development of an existing gravel source (Steam Donkey Pit) at milepost 0.11 of the MC-2100 road will involve processing rock to generate gravel ballast. These pits will generate approximately 15 cubic yards of rip rap and approximately 2,451 cubic yards of gravel ballast. This rock is available at no cost on State land in Section 31, Township 37 North, Range 5 East, and Section 7, Township 36 North, Range 5 East, W.M.

Road construction and the hauling of rock will not be permitted from November 1 to March 31 unless authorized in writing by the Contract Administrator to reduce soil damage and siltation. The hauling of forest products will not be permitted from November 1 to March 31 unless authorized in writing by the Contract Administrator to reduce soil damage and siltation.

**ACREAGE DETERMINATION**

**CRUISE METHOD:** Acres determined by GPS traverse. 77 acres gross. 16 acres deducted for a Wetland Management Zone. 61 acres net. Cruised using variable plot method. Expansion factor used is 40.00. Sighting height is 4.5 feet. Grid size plot spacing is 330 X 200 feet. Plot ratio cruise count is 1:1. 22 plots were taken in Unit 1, and 17 plots were taken in Unit 2.

**FEES:** (1) Purchaser shall furnish the State with a check made payable to Jack Weide in the amount of \$500.00 on the day of sale, for Permit Number 55-077292. (2) \$19,888.25 is due on day of sale. \$9.00 per MBF is due upon removal. These are in addition to the bid price.

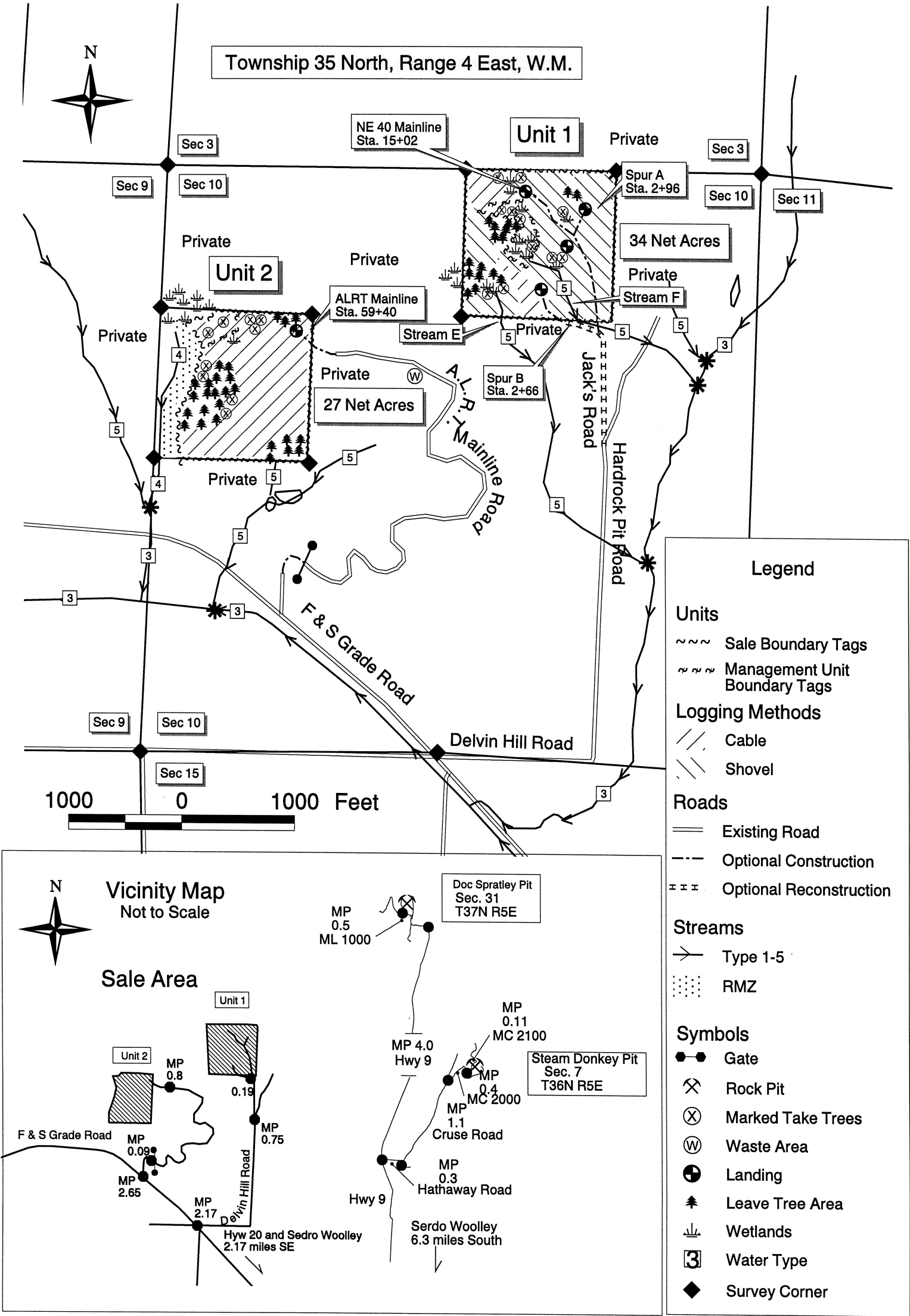
**TIMBER NOTICE OF SALE**

**SPECIAL REMARKS:** (1) Intermediate supports for cable yarding may be required on 3.5 acres in Unit #2. (2) See H-140 Clause for Stream E and F requirements, pertaining to single crossings to be allowed. (3) All orange marked take trees are within the areas tagged out with blue special management tags. (4) Blue special management tags demarcate the start of equipment exclusion areas. (5) This project requires the reinstall of a steel gate from its current location to further up the road.

TIMBER SALE MAP

SALE NAME: Butler Hill  
AGREEMENT NO: 30-077244  
TRUST(S): Forest Board Transfer (01)

REGION: Northwest  
COUNTY(S): Skagit  
ELEVATION: 0' - 500'



Drawn By: C. Hankey  
Date: April 12, 2005  
Scale: 1" = 1000'  
Version: 1.2





TIMBER NOTICE OF SALE

**SALE NAME:** BACK NINE

**AGREEMENT NO:** 30-074540

**AUCTION:** November 14, 2005 starting at 10:00 a.m., **COUNTY:** Snohomish  
Northwest Region Office, Sedro Woolley, WA

**SALE LOCATION:** Sale located approximately 11 miles Northeast of Monroe.

**PRODUCTS SOLD AND SALE AREA:** All timber, except trees marked with blue paint at DBH and root collar, cedar snags, dead and down cedar trees, logs, and stumps, and other blow down trees and snags that do not have needles or small limbs, bounded by white timber sale boundary tags and plantation edges; trees marked with orange paint at DBH and root collar located within the WMZ, on part(s) of Sections 14 all in Township 28 North, Range 7 East, W.M., containing 22 acres, more or less.

**ESTIMATED SALE VOLUMES AND QUALITY:**

Species	Avg DBH	Ring Count	Total MBF	MBF by Grade								
				1P	2P	3P	SM	1S	2S	3S	4S	UT
Douglas fir	19	8	779				103		363	273	40	
Hemlock	13	8	201						66	99	36	
Red cedar	22		100							90	10	
Red alder	15		33						11	10	9	3
Sale Total			1,113									

**MINIMUM BID:** \$397,000.00 **BID METHOD:** Sealed Bids

**PERFORMANCE SECURITY:** \$79,400.00 **SALE TYPE:** Lump Sum

**EXPIRATION DATE:** September 30, 2006 **ALLOCATION:** Export Restricted

**BID DEPOSIT:** \$39,700.00 or Bid Bond. Said deposit shall constitute an opening bid at the appraised price.

**HARVEST METHOD:** Highlead and Shovel. Cable; cable or shovel on slopes 25% or less. Tracked skidder on designated skid trail approved by the Contract Administrator. Falling and Yarding will not be permitted from November 1 to March 31 unless authorized in writing by the Contract Administrator (this pertains to ground-based yarding only) to reduce soil damage and erosion.

**ROADS:** 26.91 stations of required construction. 9.27 stations of optional construction. 9.27 stations of road to be abandoned if built.

Development of an existing hardrock source (WL-0705 Pit) at station 27.00 of the WL-07 Road will involve drilling, shooting, and processing rock to generate approximately 53 cubic yards of rip rap and approximately 2,605 cubic yards of 3-inch-minus ballast rock. This rock is available at no cost on State land in Section 14, Township 28 North, Range 7 East, W.M.

Road construction and the hauling of rock will not be permitted from November 1 to March 31 unless authorized in writing by the Contract Administrator to reduce soil damage and siltation. The hauling of forest products will not be permitted from November 1 to March 31 unless authorized in writing by the Contract Administrator to reduce soil damage and siltation.

**ACREAGE DETERMINATION**

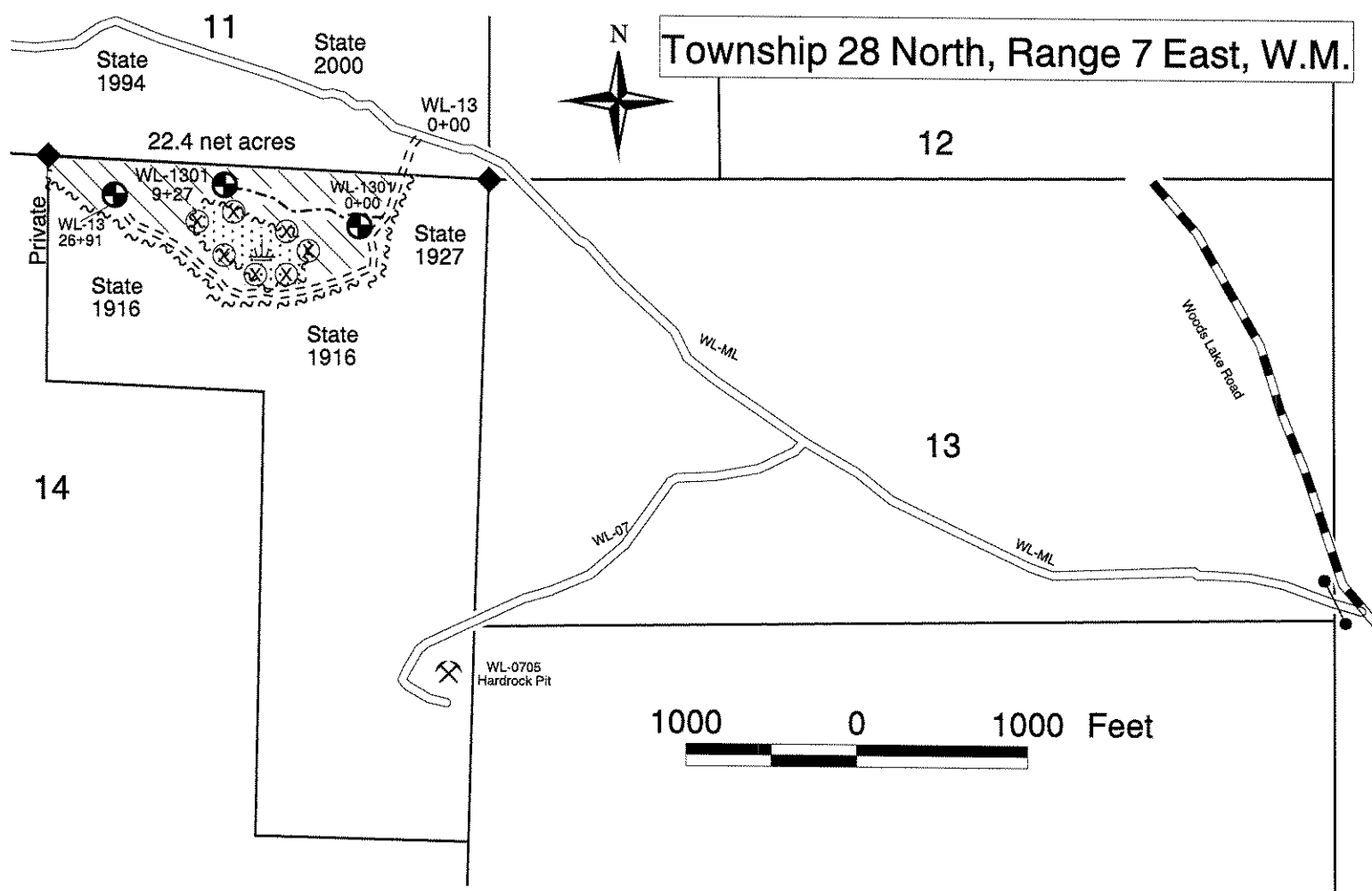
**CRUISE METHOD:** Acres determined by GPS traverse. 27.5 acres gross. 5.1 acres deducted for a Wetland Management Zone. 22.4 acres net. Cruised using variable plot method. Expansion factor used is 62.50. Sighting height is 4.5 feet. Grid size plot spacing is 200 X 150 feet. Plot ratio cruise count is 1:1. 29 plots were taken in the Unit; trees in the WMZ were cruised using Individual Tree Selection method.

**FEES:** \$14,747.25 is due on day of sale. \$9.00 per MBF is due upon removal. These are in addition to the bid price.

**SPECIAL REMARKS:** None.

TIMBER SALE MAP

SALE NAME:	Back Nine	REGION:	Northwest
AGREEMENT NO:	30-074540	COUNTY(S):	Snohomish
TRUST(S):	Forest Board Transfer (01)	Elevation:	760 - 800 feet



Legend

Symbols

- Wetlands
- Rock Pit
- Landing
- Survey Corner
- Gate
- Take Trees

Units

- Sale Boundary Tags
- Logged Area Boundary
- Sale Area

Roads

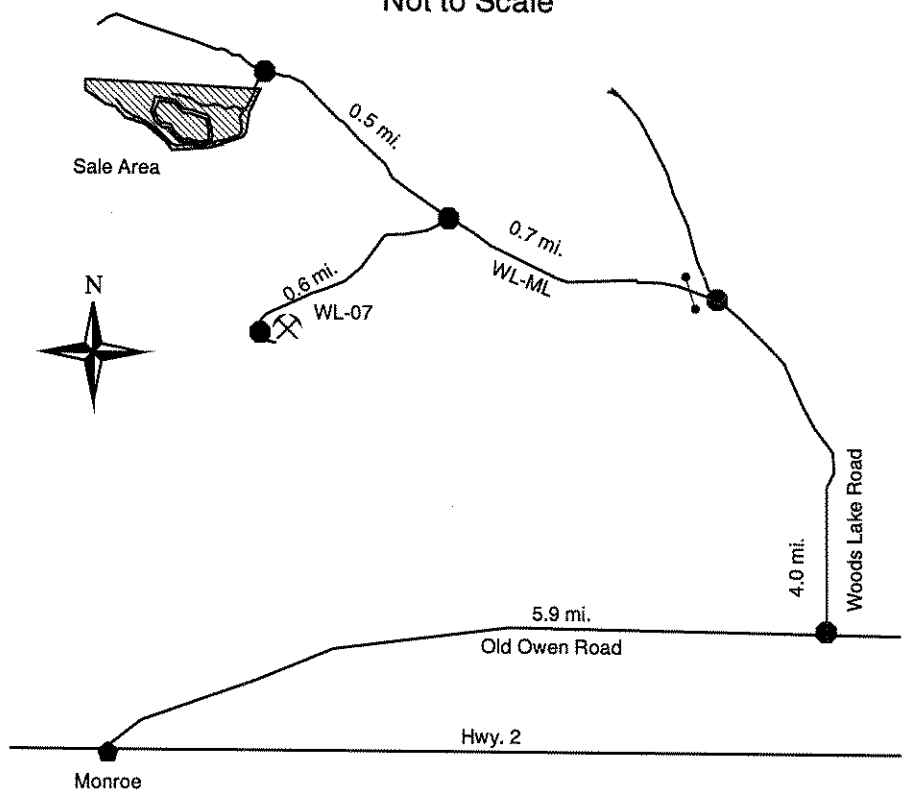
- Existing Road
- Required Construction
- Optional Construction
- Paved Road

Wetland

- WMZ

Vicinity Map

Not to Scale



Drawn By: Aaron Fox  
Date: January 20, 2005  
Scale: 1" = 1000'  
Version: 1.5



**TIMBER NOTICE OF SALE**

**SALE NAME:** *BLACK EYE*

**AGREEMENT NO:** 30-075744

**AUCTION:** November 14, 2005 starting at 10:00 a.m., **COUNTY:** Snohomish  
Northwest Region Office, Sedro Woolley, WA

**SALE LOCATION:** Sale located approximately 4 miles southeast of Granite Falls

**PRODUCTS SOLD AND SALE AREA:** All timber, except trees marked with blue paint at DBH and root collar, trees tagged out with yellow leave tree tags, cedar snags, dead and down cedar trees, logs and stumps, bounded as follows: by white timber sale boundary tags, adjacent plantations, and blue special management boundary tags in the Unit; all timber along the north boundary of the Unit marked with blue special management unit boundary tags and with orange paint at root collar on part(s) of Sections 21 all in Township 30 North, Range 7 East, W.M., containing 61 acres, more or less.

**ESTIMATED SALE VOLUMES AND QUALITY:**

Species	Avg DBH	Ring Count	Total MBF	MBF by Grade								UT
				1P	2P	3P	SM	1S	2S	3S	4S	
Douglas fir	23	5	1,856				112		1,223	470	51	
Hemlock	12	6	1,031						256	580	195	
Red cedar	11		100							74	26	
Cottonwood	19		32					23	8		1	
Maple	12		8							6	2	
Sale Total			3,027									

**MINIMUM BID:** \$1,004,000.00 **BID METHOD:** Sealed Bids

**PERFORMANCE SECURITY:** \$100,000.00 **SALE TYPE:** Lump Sum

**EXPIRATION DATE:** September 30, 2006 **ALLOCATION:** Export Restricted

**BID DEPOSIT:** \$100,400.00 or Bid Bond. Said deposit shall constitute an opening bid at the appraised price.

**HARVEST METHOD:** Cable and Shovel. Cable; cable or shovel on slopes 25% or less. Yarding will not be permitted from October 1 to March 31 unless authorized in writing by the Contract Administrator (this pertains to ground-based yarding only) to reduce soil damage and erosion.

**ROADS:** 12.02 stations of optional construction. 12.02 stations of road to be abandoned if built. 83.29 stations of existing road to be abandoned.

Use of existing stockpiles of approximately 866 cubic yards of 3-inch-minus ballast and approximately 20 cubic yards of rip rap from an existing hardrock source (SZ-03 Pit) at station 18.00 of the SZ-ML Road. This rock is available at no cost on State land in Section 21, Township 30 North, Range 7 East, W.M.

Road construction and the hauling of rock will not be permitted from November 1 to March 31 unless authorized in writing by the Contract Administrator to reduce soil damage and siltation. The hauling of forest products will not be permitted from November 1 to March 31 unless authorized in writing by the Contract Administrator to reduce soil damage and siltation.

**ACREAGE DETERMINATION**

**CRUISE METHOD:** Acres determined by GPS traverse. 62.8 acres gross. 2.0 acres deducted for green tree retention clumps. 60.8 acres net. Cruised using variable plot method. Expansion factor used is 54.45. Sighting height is 4.5 feet. Grid size plot spacing is 320 X 200 feet in the Unit. Plot ratio cruise count is 1:1 in the Unit. 42 plots were taken in the Unit.

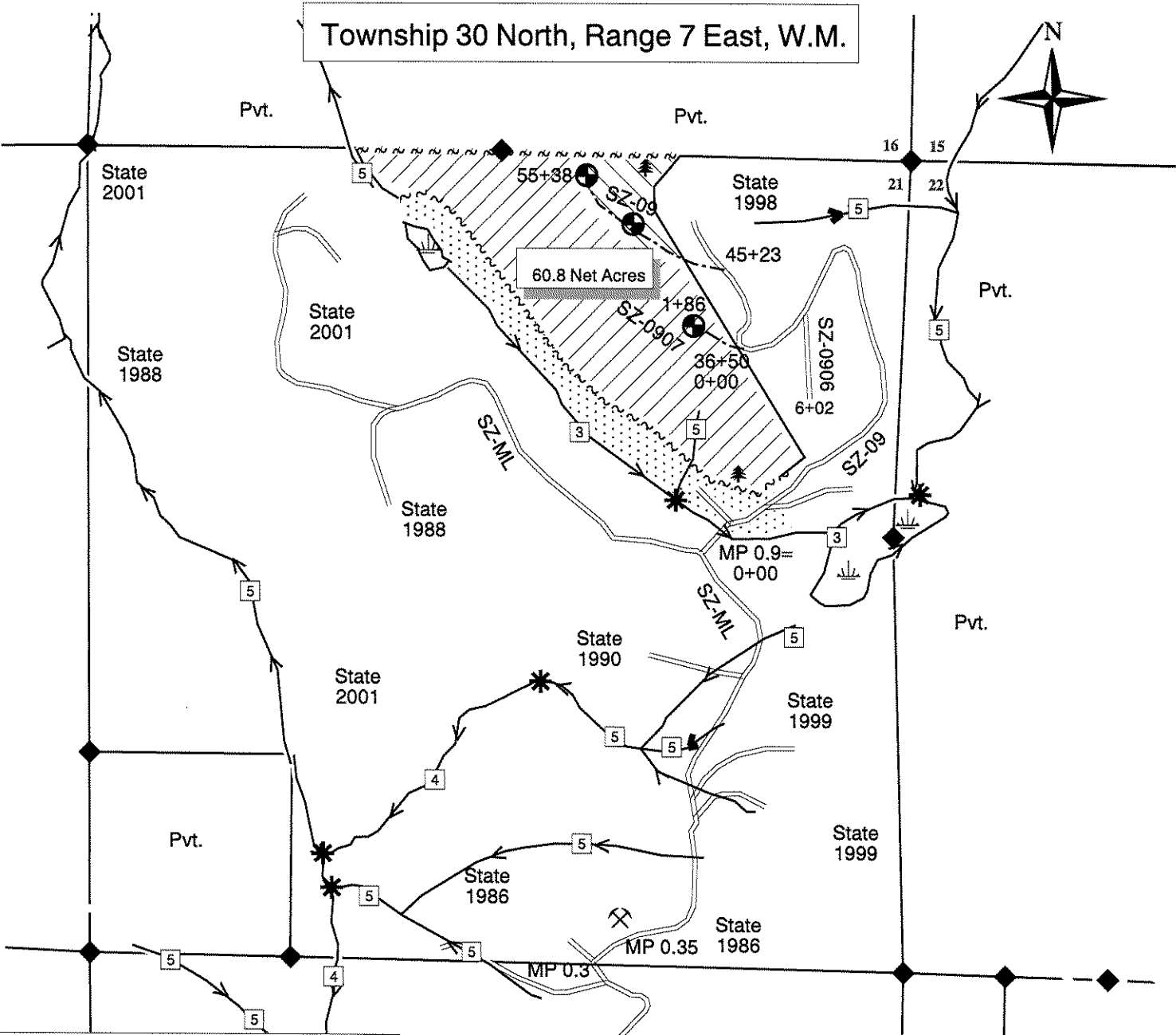
**FEES:** \$40,107.75 is due on day of sale. \$9.00 per MBF is due upon removal. These are in addition to the bid price.

**SPECIAL REMARKS:** Special management unit boundary tags indicate that the trees with the blue tags and orange paint are the northern most trees to be felled.

TIMBER SALE MAP

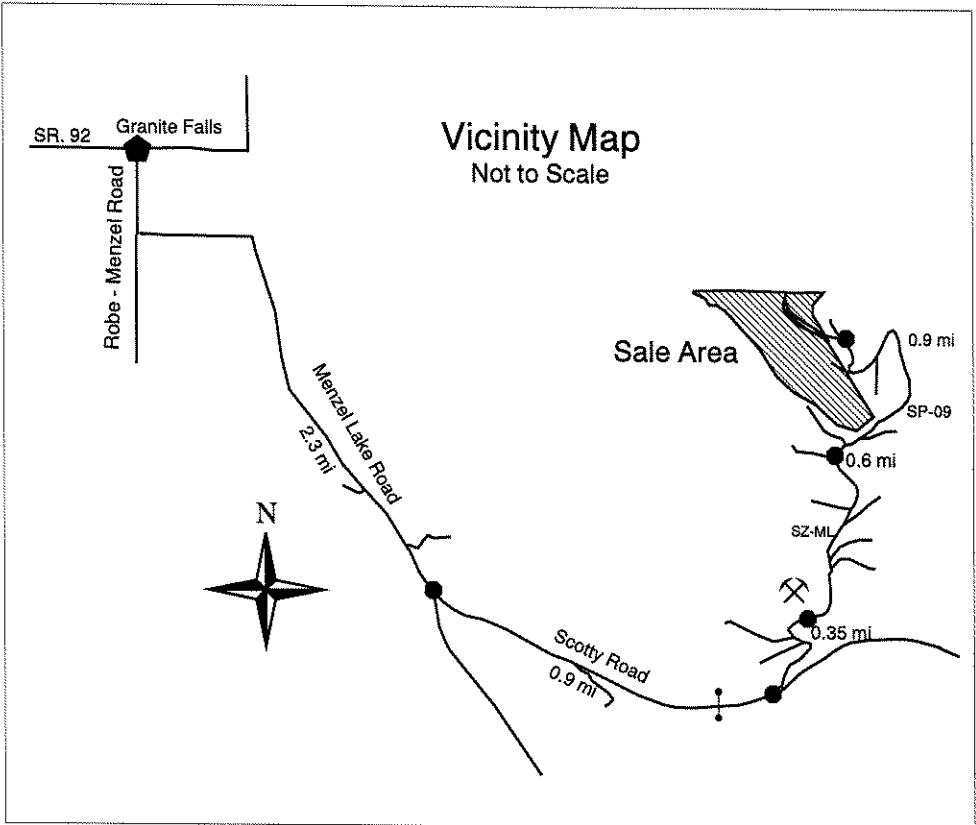
SALE NAME: Black Eye  
AGREEMENT NO: 30-075744  
TRUST(S): Forest Board Transfer (01)

REGION: Northwest  
COUNTY(S): Snohomish  
ELEVATION: 660 ft - 890 ft



Legend

- Units**
- ~~~~~ Sale Boundary Tags
  - ~~~~~ Management Unit Boundary Tags
  - Logged Area Boundary
- Roads**
- Existing Road
  - Optional Construction
- Logging Methods**
- /// Cable
  - /// Shovel
- Streams**
- Type 1-5
  - Wetland Boundary
  - ..... RMZ / WMZ
- Symbols**
- ▲ Leave Tree Area Tags
  - ⊗ Rock Pit
  - ✱ Water Type Break
  - ⊕ Wetlands
  - Landing
  - 3 Water Type
  - Gate
  - ◆ Survey Corner



Drawn By: Mark Arneson  
Date: December 30, 2003  
Scale: 1" = 1000'  
Version: 1.3



TIMBER NOTICE OF SALE

SALE NAME: VACILLATE

AGREEMENT NO: 30-077260

AUCTION: November 14, 2005 starting at 10:00 a.m., COUNTY: Snohomish  
Northwest Region Office, Sedro Woolley, WA

SALE LOCATION: Sale located approximately 5 miles northeast of Arlington

PRODUCTS SOLD  
AND SALE AREA: All timber, except trees marked with blue paint at DBH and root collar, trees tagged out with yellow leave tree tags, cedar snags, dead and down cedar trees, logs and stumps, bounded as follows: by white timber sale boundary tags, logged areas, and the EB-58 road in Unit #1; by white timber sale boundary tags and logged areas in Unit #2; all timber bound by orange right of way tags on part(s) of Sections 23, 25, 27, 28, 33 and 34 all in Township 32 North, Range 6 East, W.M., containing 98 acres, more or less.

ESTIMATED SALE VOLUMES AND QUALITY:

Species	Avg DBH	Ring Count	Total MBF	MBF by Grade								
				1P	2P	3P	SM	1S	2S	3S	4S	UT
Red alder	14		869						263	250	356	
Hemlock	14	7	783							384	282	117
Douglas fir	16	6	480							310	114	56
Cottonwood	14		36					28				8
Maple	17		28							21	7	
Birch	9		9									9
Sale Total			2,205									

MINIMUM BID: \$471,000.00 BID METHOD: Sealed Bids

PERFORMANCE SECURITY: \$94,200.00 SALE TYPE: Lump Sum

EXPIRATION DATE: September 30, 2007 ALLOCATION: Export Restricted

BID DEPOSIT: \$47,100.00 or Bid Bond. Said deposit shall constitute an opening bid at the appraised price.

HARVEST METHOD: Shovel and Cable. Cable; cable or shovel on slopes 25% or less. Falling and Yarding will not be permitted from November 1 to March 31 unless authorized in writing by the Contract Administrator (this pertains to ground-based equipment only) to reduce soil damage and erosion.

ROADS: 58.93 stations of required construction. 194.22 stations of required reconstruction. 28.87 stations of optional construction. Reconstruction work will include road compaction with a smooth drum vibratory roller. 28.87 stations of road to be abandoned if built.

Development of an existing hardrock source (EB-3803 Pit) at station 15.84 of the EB-38 Road will involve clearing, stripping, drilling, shooting, and processing rock to generate rip rap and 3-inch-minus ballast. Existing stockpiles of 2-inch-minus surfacing and riprap are available. This rock is available at no cost on State land in Section 23, Township 32 North, Range 6 East, W.M. The total rock required is approximately 188 cubic yards of riprap and approximately 10,762 cubic yards of 3-inch-minus ballast and 4,213 cubic yard of surfacing material.

Road construction, reconstruction, abandonment, and the hauling of rock will not be permitted from November 1 to March 31 unless authorized in writing by the Contract Administrator to reduce soil damage and siltation. The hauling of forest products will not be permitted from November 1 to March 31 unless authorized in writing by the Contract Administrator to reduce soil damage and siltation.

ACREAGE DETERMINATION

CRUISE METHOD: Acres determined by GPS traverse. 100.9 acres gross. 3.0 acres deducted for leave tree retention clumps. 97.9 acres net. Cruised using variable plot method. Expansion factor used is 20 and 40 in Unit #1; and 40 in Unit #2. Sighting height is 4.5 feet. Grid size plot spacing is 400 X 200 feet for both units. Plot ratio cruise count is 1:1 for both units. 29 plots were taken in Unit #1, 27 plots were taken in Unit #2; for a total of 56 plots. Note: The 1.2 acres of right of way acreage were added to Unit #2 for the purposes of the cruise.

FEES: \$29,216.25 is due on day of sale. \$9.00 per MBF is due upon removal. These are in addition to the bid price.

This sale is on lands certified  
under the Sustainable Forestry  
Initiative® program.  
[www.aboutsfi.org](http://www.aboutsfi.org)



WASHINGTON STATE DEPARTMENT OF  
**Natural Resources**

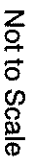
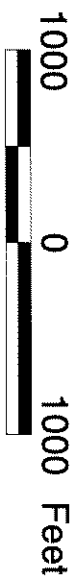
## TIMBER NOTICE OF SALE

---

**SPECIAL REMARKS:** Pipeline North of Unit #1 must not be disturbed without prior authorization from the Contract Administrator.

<b>SALE NAME:</b>	Vacillate
<b>AGREEMENT NO:</b>	77260
<b>TRUST(S):</b>	Forest Bo

<b>REGION:</b>	Northwest
<b>COUNTY(S):</b>	Snohomish
<b>ELEVATION:</b>	1,500 Feet



---

- | Units                   | Logging Methods                 |
|-------------------------|---------------------------------|
| ~~~~~                   | Cable                           |
| ~~~~~                   | Shovel                          |
| _____                   |                                 |
| Symbols                 | Roads                           |
| Tagged Leave Tree Areas | ===== Existing Road             |
| Water Break             | ===== Required Construction     |
| Landing                 | ===== Required Reconstruction   |
| Wetlands                | - - - - - Optional Construction |
| Water Type              |                                 |
| Hard Rock Pit           |                                 |
| Gate                    |                                 |
| Survey Monument         |                                 |
|                         | Streams                         |
|                         | Type 1-5                        |
|                         | RMZW/MZ                         |
|                         | Underground Water Pipe          |

Drawn By: Thomas Wyse  
Date: July 12, 2005  
Scale: 1" = 1000'  
Version: 1.9

