

Bidder's/Purchaser's Inspection of Sale Area and Forest Products

Acreage estimates and volume estimates contained within each timber notice of sale and each timber sale contract are made only for administrative and identification purposes. Except as expressly provided by the timber sale contract, the purchaser shall be responsible for paying the entire purchase price, even if the actual acreage or timber volume varies from the estimated quantity or volume shown.

All prospective bidders have the opportunity and are expected to inspect the sale area and the forest products located thereon. Bidders shall not rely on any representations by the State including, but not limited to, acreage estimates, volume estimates, appraisal or pre-bid documentation. The successful bidder/purchaser will further warrant that they have entered the timber sale contract without any reliance upon the DNR's volume estimates, acreage estimates, appraisals, pre-bid documentation, or any other representation by the DNR.

Any timber sale contract arising out of these public auctions will require the successful purchaser to warrant that they are entering the timber sale contract based solely upon their own judgment of the value of the forest products, formed after their own examination and inspection of both the timber sale area and the forest products being sold.

Exclusion and Disclaimer of Warranties

The PARTIES AGREE that the IMPLIED WARRANTIES OF MERCHANTABILITY AND FITNESS FOR A PARTICULAR PURPOSE, and ALL OTHER WARRANTIES EXPRESS OR IMPLIED, ARE EXCLUDED from this transaction, and shall not apply to the goods sold. For example, THE FOLLOWING SPECIFIC MATTERS ARE NOT WARRANTED, and are EXCLUDED from this transaction:

a. ***The merchantability of the forest products.*** The use of the term “merchantable” in any document is not intended to vary the foregoing.

b. ***The condition of the forest products.*** All forest products will be conveyed “AS IS.”

c. ***The acreage contained within any sale area.*** Any acreage descriptions appearing in the timber notices of sale, timber sale contract, timber sale map or other documents are estimates only, provided solely for administrative and identification purposes.

d. ***The volume, quality, or grade of the forest products.*** The descriptions of the forest products to be conveyed are estimates only, made solely for administrative and identification purposes.

e. ***The correctness of any soil or surface conditions, presale construction appraisals, investigations, and all other pre-bid documents prepared by or for the State.*** These documents have been prepared for the State’s appraisal purposes only.

f. ***That the sale area is free from threatened or endangered species, or their habitat.*** The State is not responsible for any interferences with forestry operations that result from the presence of any threatened or endangered species, or the presence of their habitat, within the sale area.

g. ***That the forestry operations to be performed under this contract will be free from regulatory actions by governmental agencies.*** The State is not responsible for actions to enforce regulatory laws, such as the Washington Forest Practices Act (Chapter 76.09 RCW), taken by the Department of Natural Resources or any other agency that may affect the operability of these timber sales.

h. Items contained in any other documents prepared for or by the State.

Please also see timber sale contract clause G-060 for further information.

BIDDING PROCEDURES FOR TIMBER AUCTIONS

The general requirements that follow are a part of all Timber Notices of Sale to be auctioned by the Department of Natural Resources (DNR).

General Information

The State reserves the right to waive minor irregularities and the right to reject any or all bids.

A. This book contains the timber notices of sale and maps for each timber sale scheduled to be auctioned. More specific information can be obtained by contacting the appropriate region office at the number listed on the back cover of this book.

B. The timber notice of sale is a summary of sale information. For more specific information, interested parties are encouraged to view the Appraisal Packets on the DNR Internet Site @ www.dnr.wa.gov, this will take you directly to the Product Sales Section. The Appraisal Packets contain **DRAFT** copies of the timber notice of sale, map, contract, road plan, cruise data, precruise and cruise narrative, Forest Practices Application (FPA), Hydraulics Project Approval (HPA).

C. The sale preview packets may be obtained at no charge for individual sales by visiting the appropriate region office.

D. Timber sale contracts contain extensive terms and conditions that will be binding upon successful high bidders. Each bidder should carefully review all terms contained in the appropriate **DRAFT** timber sale contract prior to bidding on a sale, and should review the final contract prior to signing. **DRAFT** timber sale contracts are contained in the preview and presales packets and are available upon request at the respective region office.

E. Sales advertised in this book have not been approved by the Board of Natural Resources and are subject to the Board's approval before they will be sold. The Board meets and approves sales approximately six weeks prior to auction. All sales are subject to confirmation by the DNR under RCW 79.15.120.

F. The State does not guarantee the accuracy of any information contained herein pertaining to particular sales. Therefore, all prospective purchasers are expected to make their own independent inspections and appraisals prior to bidding.

G. If any conflict exists between the information in the Timber Notice of Sale, timber sale map, sale preview packets and that in the timber sale contract, the signed contract will prevail.

H. Timber sales are subject to the Washington State Forest Excise Tax (RCW Chapter 84.33).

I. Within 30 days of sale confirmation, the apparent high bidder will provide to the State the Performance Security specified on each Notice of Sale.

J. Each DNR region office has information about sales offered in that region. For further information, contact the respective DNR region office. Region office addresses and telephone numbers appear on the back cover of this booklet.

K. The purchaser assumes the responsibility for any costs associated with extra maintenance or repair levied by a county for any county road used by the purchaser.

BIDDING PROCEDURES FOR TIMBER AUCTIONS (Continued)

Bidding Process

- A. All timber will be auctioned using the sealed bid method.
- B. Bids submitted on day of auction must be in the bid box at the specified auction location before 10:00 a.m. The respective DNR region office must receive mailed bids by 4:30 p.m., on the last business day before the auction. Bidders assume all risk for the method of delivery.
- C. The DNR has the right to reject bid forms that are completed incorrectly. *All bid forms must have an original signature on behalf of the person or entity submitting the bid, and must be on the form provided in this booklet or a photocopy thereof. Revised documents are not permissible.* Bidding instructions are on the back of the Sealed Bid Form. A bid deposit must be included in the sealed bid envelope unless using a Timber Sale Statewide Bid Bond.
- D. All bids must include the completed Sealed Bid Form and bid deposit.
- E. Bids will be opened in each respective region in the order in which sales appear in the Public Auction Sale of Timber book (alphabetically by county and by agreement number).
- F. If a tie bid occurs, the names of the tie bidders will be placed in a hat and the successful bidder will be determined by a drawing.
- G. The apparent high bidder on a particular sale will have the option of withdrawing additional sealed bids submitted for any remaining sales to be auctioned. The apparent high bidder must exercise this option within two minutes after the apparent high bidder is announced.

Auction Time and Location

Auctions will start at 10:00 a.m. and close at 4:00 p.m. on the date and at the location specified in each Timber Notice of Sale.

Bid Deposits

- A. Required bid deposits are listed on each Timber Notice of Sale.
- B. Bid deposits must be in the form of cash, certified check, cashiers' check, money order or bid bond.
- C. Bid bonds may be either a Timber Sale Statewide Bid Bond or a Timber Sale Per Sale Bid Bond.
- D. All bid deposits shall be submitted by the person or entity submitting the bid and made payable to the Department of Natural Resources. **Third party deposits will not be accepted.**

Timber Sale Per Sale Bid Bonds

- A. The Per Sale Bid Bond shall guarantee payment of the bid deposit **within ten days of auction.**
- B. The balance between the bid bond and the Initial Deposit payment is due by 4:30 p.m., **on the day of auction.**
- C. Additional forms and instructions for a Per sale Bid Bond are available at any DNR region office.

Timber Sale Statewide Bid Bond

- A. Statewide Bid Bonds shall guarantee payment of the Initial Deposit on any statewide timber sale while the bond is in effect.
- B. The Statewide Bid Bond must be received by the Department of Natural Resources, Product Sales & Leasing Division, PO BOX 47016, Olympia, Washington, 98504-7016, ten days in advance of the auction date. The bond shall be in the amount of \$150,000.00.
- C. The bidder must supply a list of persons authorized to bid using the bond. Bid bonds are subject to approval by the Department of Natural Resources.
- D. Successful bidders using a Statewide Bid Bond must pay the total Initial Deposit payment (10 percent of the total bid price) **by 4:30 p.m. on the day of auction.**
- E. A Statewide Bid Bond cannot be used to secure the Initial Deposit payment due the day of auction.
- F. Additional forms and instructions for a statewide bid bond are available at any DNR region office.

Payments

The initial deposit for a sale is 10% of the total bid value as submitted by the apparent high bidder (25% if the bidder is a defaulter as defined under WAC 332-140-300) and never less than \$5,000.00 for lump sum sales. For Lump Sum sales appraised at less than \$5,000.00, the entire bid value is due on day of auction.

- a. Apparent high bidders using cash, certified check, cashiers' check or money order as a bid deposit must pay the total Initial Deposit amount by 4:30 p.m. on auction day.
- b. Apparent high bidders using a Timber Sale Per Sale Bid Bond as a bid deposit must pay the difference between the bid deposit and the total initial deposit by 4:30 p.m., on the day of auction. The bid bond amount must be replaced with a certified check, cashier's check, bank draft, cash, money order, or wire transfer within ten days of the auction.
- c. Apparent high bidders using a Timber Sale Statewide Bid Bond must pay the entire Initial Deposit amount by 4:30 p.m. on the day of auction.

Fees due on the day of sale must be paid by 4:30 p.m.

All payments must be in the form of a certified check, cashier's check, bank draft, cash, money order or wire transfer.

Eligibility to Bid

In order to bid on State timber sales you must be:

- 18 years of age (or have a co-signer who meets the eligibility requirements),
- Licensed to do business in the State of Washington,
- Eligible to bid on Export Restricted timber, and
- Capable of meeting all contract obligations.

Authorized Representatives

Companies may only use authorized representatives or company officers to bid on State sales, sign State documents or sign checks. A list of authorized representatives and their specific authorities must be submitted in writing to the Department of Natural Resources Product Sales & Leasing Division, PO BOX 47016, Olympia, Washington, 98504-7016, ten days in advance of the auction. A company owner or officer must sign this submittal.

State of Washington
Department of Natural Resources
Doug Sutherland, Commissioner of Public Lands

SEALED BID FORM

Sale Name _____ Agreement Number _____

_____ hereby submits the following bid for timber.
(Print full, legal company name)

(Street address, City, State, Zip Code)

(Phone Number)

Lump Sum Bid (Not Including Fees) \$_____ **For Total Sale**

Weight Scale Sale Bid (Not Including Fees) \$_____ / **Ton**

Scribner Scale Sale Bid (Not Including Fees) \$_____ / **MBF**

BID DEPOSIT

Bid Deposit Amount: \$_____

Bid Deposit Type:

- ☐ Cash, certified check, cashiers check, or money order
☐ Per Sale Bid Bond
☐ Statewide Bid Bond, Number _____

The Successful Bidder agrees to furnish, **within 30 days of confirmation date**, Performance Security acceptable to the State in the amount specified on the Notice of Sale. Performance Security must guarantee performance of all provisions of the contract and payment of any damages caused by operations under the contract or resulting from the successful bidders noncompliance with any rule or law.

Bidder's Warranty and Bid Signature

By signing and submitting this bid as an offer to purchaser forest products from the State, the Bidder hereby warrants to the State that they have had an opportunity to fully inspect the sale area and the forest products being sold. Bidder further warrants to the State that they enter this bid based upon their own judgments of the value of the forest products, formed after their own examination and inspection of both the timber sale area and the forest products being sold. Bidder also warrants to the State that they enter this bid without any reliance upon the volume estimates, acreage, appraisals, pre-bid documentation, or any other representation by the Washington State Department of Natural Resources.

(Signature of Authorized Representative submitting this bid)

Date _____

(Print **name and title** of Authorized Representative submitting this bid)

Note: all sales are subject to confirmation by the Commissioner of Public Lands (Refer to RCW 79.15.120)

Instructions For Completing Sealed Bid Form

All bids submitted for the purchase of forest products being sold by the Washington State Department of Natural Resources must have an original signature on behalf of the person or entity submitting the bid, and must be on the form provided in this booklet or a photocopy thereof. The DNR will not accept bids that are not signed, and will not accept bids that are not on the current, approved bid form. All appropriate blanks on bid form must be completed including the bid bond number if the bidder is relying upon a bid bond for bid deposit.

For more specific information, contact the appropriate region office.

In-Person Bids

- A. Sealed bids must be in auction box before 10:00 a.m. on the day of auction at the location specified in the Timber Notice of Sale.
- B. Sealed bids must be submitted in an envelope with the name of the sale, the bidder's name and the contract number clearly written on the outside of the envelope. The full legal name and business address of the bidder must be inserted where indicated on the form, and must be on the bid bond and timber sale contract. The bid form must be signed by an authorized representative. When a bidder has more than one person authorized to bid, documentation of those persons with signature authority for bidding must accompany the bid or be on file at the region office. Sealed bid envelopes are available at all region offices. One bid per envelope.
- C. Sealed bid envelopes **must** contain a completed bid form and a bid deposit.
- D. Sealed bid envelopes **may** contain a check for the Initial Deposit amount and a check for fees.

Mailed Bids

- A. Bids that are mailed are required to have printed on the outside: "DO NOT OPEN UNTIL SALE DATE. SEALED BID ENCLOSED". The sealed bid envelope(s) will be enclosed inside the mailed-in envelope. Mailed bids must be submitted in an envelope with the name of the sale, the bidder's name and the agreement number clearly written on the outside of the envelope. The full legal name and business address of the bidder must be inserted where indicated on the form, and must be the same on the bid bond and timber sale contract. The Sealed Bid Form must be signed by an authorized representative. When a bidder has more than one person authorized to bid, then documentation of those persons with signature authority for bidding must accompany the bid or be on file at the region office. Mail-in envelopes are available at all region offices. One bid per mailed-in envelope.
- B. Bids that are mailed will be accepted up to 4:30 p.m. the last business day before the auction by the region office in which the sale is located. Bidders assume the risk for the method of delivery. The DNR assumes no responsibility for any delays caused by any delivery service.
- C. Sealed bid envelopes **must** contain a completed bid form and a bid deposit.
- D. Sealed bid envelopes **may** contain a check for the Initial Deposit amount and a check for fees.

Initial Deposit:

Lump Sum Sales - Initial Deposit must equal 10% of the total bid submitted.
(25% if the bidder is a defaulter as defined under WAC 332-140-300)

Weight Scale Sales - Initial Deposit must equal 10% of the bid per ton multiplied by the total sale estimated tonnage. (25% if the bidder is a defaulter as defined under WAC 332-140-300)

Scribner MBF Scale Sales - Initial Deposit must equal 10% of the bid per MBF multiplied by the total sale MBF. (25% if the bidder is a defaulter as defined under WAC 332-140-300)

State of Washington
Department of Natural resources
Doug Sutherland, Commissioner of Public Lands

STATEWIDE BID BOND

Bond Number _____

_____ of _____,
(Principal's Name) (City, State)

hereinafter called PRINCIPAL, and _____ hereinafter called SURETY,

a corporation organized under the laws of the State of _____, and authorized to transact surety business in the State of Washington, as SURETY, are held and firmly bound jointly and severally to the State of Washington, Department of Natural Resources, hereinafter called the STATE, in the sum of \$150,000.00 Dollars, lawful money of the United States of America. The PRINCIPAL binds itself, its heirs, executors, administrators, successors, and assigns, and the SURETY binds itself, its successors, and assigns, all jointly and severally.

This bond shall be governed by the laws of the State of Washington. In the event of a lawsuit involving this bond, a venue shall be proper only in Thurston County Superior Court.

Signed, sealed and dated this _____ day of _____, _____.
(month) (year)

This statewide bid bond may be used for bidding between the following dates:

Starting: _____

Ending: _____

It Is Hereby Understood and Agreed:

If PRINCIPAL is an apparent high bidder, PRINCIPAL shall before 4:30 p.m., on day of sale, pay to the STATE the amount of the initial deposit in the form of a certified check, cashier's check, bank draft, cash or money order, then this agreement shall be void for the sale on which the payment is made; otherwise, it will remain in force.

SURETY will make payment to the STATE within ten days after demand by the STATE if the PRINCIPAL shall fail to make timely payment as described above.

The SURETY may cancel this bond by sending a written notice to the STATE, not less than forty-five days before a cancellation date; liability shall terminate as to acts or omissions of the PRINCIPAL that occur after the cancellation date.

The PRINCIPAL and the SURETY executed this bond on the date first mentioned.

Principal: (Above named)

Signature: _____

Name: _____

Title: _____

Address: _____

City: _____
State & Zip Code

Surety: (Above named)

Signature: _____

Name: _____

Title: _____

Address: _____

City: _____
State & Zip Code

Surety: (Local Office of Authorized agent)

Signature: _____

Name: _____

Title: _____

Address: _____

City: _____
Above
State & Zip

Notary or Company Seal in Space

Instructions For Completing Timber Sale Statewide Bid Bond

- A. This form is authorized for use as bid guaranty to qualify for bidding on Washington State Department of Natural Resources timber sales.
- B. The Statewide Bid Bond may be used as bid guaranty on more than one timber sale.
- C. The full legal name and business address of the PRINCIPAL must be inserted where indicated and must be the same as will appear on the bidding record and timber sale contract. The bond must be signed by an authorized person. Additionally, the name must be typed or printed below the signature and title must be shown.
- D. The full legal name and business address of the SURETY must be inserted where indicated. The bond must be signed by an authorized person. Additionally, the name must be typed or printed below the signature and the title must be shown.
- E. If the SURETY does not have a Washington State office or resident agent, but is authorized to transact surety business in the State of Washington as SURETY, it may leave this signature block blank.
- F. This form must be received by the Department of Natural Resources, Product Sales and Leasing Division, PO BOX 47016, Olympia, Washington, 98504-7016, ten days in advance of the auction.
- G. The PRINCIPAL must submit a list of authorized bidders with the Statewide Bid Bond Form.
- H. **The State reserves the right to reject *incomplete* or *incorrect* bid bond forms, making such forms unacceptable as bid guaranty.**

State of Washington

Department of Natural Resources

Doug Sutherland, Commissioner Of Public Lands

Timber Sale Per Sale Bid Bond

Bond Number_____

_____ of _____, hereinafter called PRINCIPAL, and _____, hereinafter called SURETY, a corporation organized under the laws of the State of _____ and authorized to transact surety business in the State of Washington, as SURETY, are held and firmly bound jointly and severally to the State of Washington, Department of Natural Resources, hereinafter called the STATE, in the sum of \$_____Dollars, lawful money of the United States of America. The PRINCIPAL binds itself, its heirs, executors, administrators, successors, and assigns, and the SURETY binds itself, its successors, and assigns, all jointly and severally.

This bond shall be governed by the laws of the State of Washington. In the event of a lawsuit involving this bond, venue shall be proper only in Thurston County Superior Court.

Signed, sealed, and dated this____day of _____, 20_____.

BID IDENTIFICATION:

SALES NAME(S)	REQUIRED DEPOSIT	AGREEMENT NUMBER(S)

DATE OF BID: _____

It Is Hereby Understood and Agreed:

If PRINCIPAL is the high bidder on the sale(s) identified above and, within ten (10) days of the day of sale, transmits cash, certified check, cashier=s check, bank draft or money order, payable to the STATE, in the amount of the bid guaranty required by the terms of the Notice of Sale, *then* this obligation shall be void; *otherwise*, it shall remain in force.

SURETY will make payment to the STATE within ten (10) days after demand by the STATE whenever the PRINCIPAL shall fail to make timely payment as described above.

IN WITNESS WHEREOF: the PRINCIPAL and the SURETY have caused this bond to be executed on the date first mentioned.

SECOND OFFICER:

Signature: _____

Name: _____

Title: _____

PRINCIPAL: (Above Named)

Signature: _____

Name: _____

Title: _____

Address: _____

SURETY: (Local Office of Authorized Agent)

Signature:_____

Name: _____

Title: _____

Address: _____

City: _____

State & Zip: _____

City: _____

State & Zip: _____

SURETY: (Above Named)

Signature: _____

Name: _____

Title: _____

Address: _____

City: _____

State & Zip_____

NOTARY OR COMPANY SEAL IN THE SPACE ABOVE

Instructions For Completing Timber Sale PerSale (s) Bid Bond

- A. This form is authorized for use as bid guaranty to qualify for bidding on Washington State Department of Natural Resources timber sales.
- B. The Timber Sale Per Sale Bid Bond may be used as bid guaranty on more than one timber sale auction held the same date at the same location.
- C. The full legal name and business address of the PRINCIPAL must be the same as will appear on the bidding record and timber sale contract. The bond must be signed by an authorized person, the name typed or printed, and title shown. If PRINCIPAL is a corporation, a second officer must sign in the space to the left of the signature of the officer executing for the PRINCIPAL.
- D. The full legal name and business address of the SURETY must be inserted where indicated. The bond must be signed by an authorized person. Additionally, the name must be typed or printed below the signature and the title must be shown. If this person is not an officer of the corporation, evidence of authority must be submitted.
- E. If the SURETY does not have a Washington State office or resident agent, but is authorized to transact surety business in the State of Washington as Surety, it may leave the local office signature block blank.
- F. The date of the bid bond must not be later than the auction date.
- G. **The State reserves the right to reject *incomplete or incorrect* bid bond forms, making such forms unacceptable as guaranty.**

Summary Report of All Sales for the Month of December 2005

Board Sales					
<u>County</u>	<u>Region</u>	<u>Agree #</u>	<u>Sale Name</u>	<u>Volume</u>	<u>Value</u>
Cowlitz	Pacific Cascade	77232	*BURRIS CREEK	1,648	\$761,000.00
Grays Harbor	Pacific Cascade	77240	*GPC	3,864	\$1,233,000.00
Lewis	Pacific Cascade	77514	*4TH OF JULY	4,439	\$1,567,000.00
Snohomish	Northwest	76846	*SISU	4,516	\$899,000.00
Snohomish	Northwest	77243	*SALISH VIEW	2,204	\$792,000.00
Thurston	Pacific Cascade	77235	*CORRAL	7,717	\$3,630,000.00
Thurston	Pacific Cascade	77515	*WATCH	4,084	\$1,432,000.00
Wahkiakum	Pacific Cascade	76839	*CLUTCH	3,426	\$1,255,000.00
Whatcom	Northwest	77133	*SANTA MARIA	2,914	\$934,000.00
Total				34,812	\$12,503,000.00
Region Sales					
<u>County</u>	<u>Region</u>	<u>Agree #</u>	<u>Sale Name</u>	<u>Volume</u>	<u>Value</u>
Thurston	South Puget	77219	*ALDER OVERLOOK	990	\$148,000.00
Total				990	\$148,000.00

Sales marked with an asterisk (*) are lands certified under the *Sustainable Forestry Initiative® Program*. www.aboutsfi.org

TIMBER NOTICE OF SALE

SALE NAME: BURRIS CREEK

AGREEMENT NO: 30-077232

AUCTION: December 15, 2005 starting at 10:00 a.m., **COUNTY:** Cowlitz
Pacific Cascade Region Office, Castle Rock, WA

SALE LOCATION: Sale located approximately 8 miles southeast of Kalama, Washington

PRODUCTS SOLD AND SALE AREA: All timber, except snags, trees tagged out with leave tree area tags, and leave trees marked with blue paint, bounded by timber sale boundary tags and special management unit boundary tags; all right-of-way timber marked with red paint along the SG-100 road, on part(s) of Sections 36 all in Township 6 North, Range 1 West, W.M., containing 34 acres, more or less.

ESTIMATED SALE VOLUMES AND QUALITY:

Species	Avg DBH	Ring Count	Total MBF	MBF by Grade								UT
				1P	2P	3P	SM	1S	2S	3S	4S	
Douglas fir	25.2	8	1,560			19	38		1,128	355	20	
Red alder	15.6		67						33	17	17	
Maple	20.8		17								17	
Hemlock	33		4							4		
Sale Total			1,648									

MINIMUM BID: \$761,000.00 **BID METHOD:** Sealed Bids

PERFORMANCE SECURITY: \$100,000.00 **SALE TYPE:** Lump Sum

EXPIRATION DATE: October 30, 2006 **ALLOCATION:** Export Restricted

BID DEPOSIT: \$76,100.00 or Bid Bond. Said deposit shall constitute an opening bid at the appraised price.

HARVEST METHOD: Cable harvesting methods, with ground based harvesting methods (shovel or tracked skidder) being restricted to slopes of 35% and less during dry soil conditions. Harvest operations will not begin before 7:00 am and end before 7:00 pm on any day of the week. Along the southwest property line there is an area marked with Special Management Unit Boundary tags. These trees shall be felled last as they assist to delineate the DNR property boundary. This will be discussed at the onsite meeting prior to timber falling. An onsite meeting with timber fallers will occur before timber falling begins. Lead end suspension required on all cable settings. Any and all snags cut because of safety concerns cannot be removed and must remain where they fall. Yarding may be suspended at the discretion of the Contract Administrator when soil rutting exceeds four inches as measured from the natural ground line when there is potential for damage to any public resource. Landing debris shall be piled as directed by the Contract Administrator. See Schedule L for additional requirements. Yarding will not be permitted from November 1 to May 31 unless authorized in writing by the Contract Administrator.

ROADS: 12.00 stations of required construction. 4.00 stations of required reconstruction. 24.84 stations of pre-haul maintenance. 12.00 stations of road abandonment. Rock is available, through a Road Use Permit, from a private pit in Section 36, Twp. 6 N, Rng 1 W, W.M., at a cost of \$3.00 per cubic yard, for approximately 700 cubic yards of rock. Purchaser shall provide the State with a check in the amount of \$5,738.20 made payable to Norbert Wellman, for a Road Use Permit, for timber hauling and rock purchase, within 30 days of date of sale. Road construction will not be permitted from October 31 to June 1 unless authorized in writing by the Contract Administrator. The hauling of forest products will not be permitted from October 31 to June 1 unless authorized in writing by the Contract Administrator on the SG-100 and SG-100 Spur A roads

ACREAGE DETERMINATION

CRUISE METHOD: The sale acres were determined by GPS. The sale area was cruised using a variable plot cruise method. Harvesting activities are estimated to be approximately 40% ground-based and 60% cable harvesting.

FEES: \$21,840.00 is due on day of sale. \$9.00 per MBF is due upon removal. These are in addition to the bid price.

SPECIAL REMARKS: Purchaser shall provide a written Extreme Hazard Abatement plan that meets the requirements of WAC 332-24 prior to the beginning of logging operations.

TIMBER SALE MAP

SALE NAME: BURRIS CREEK

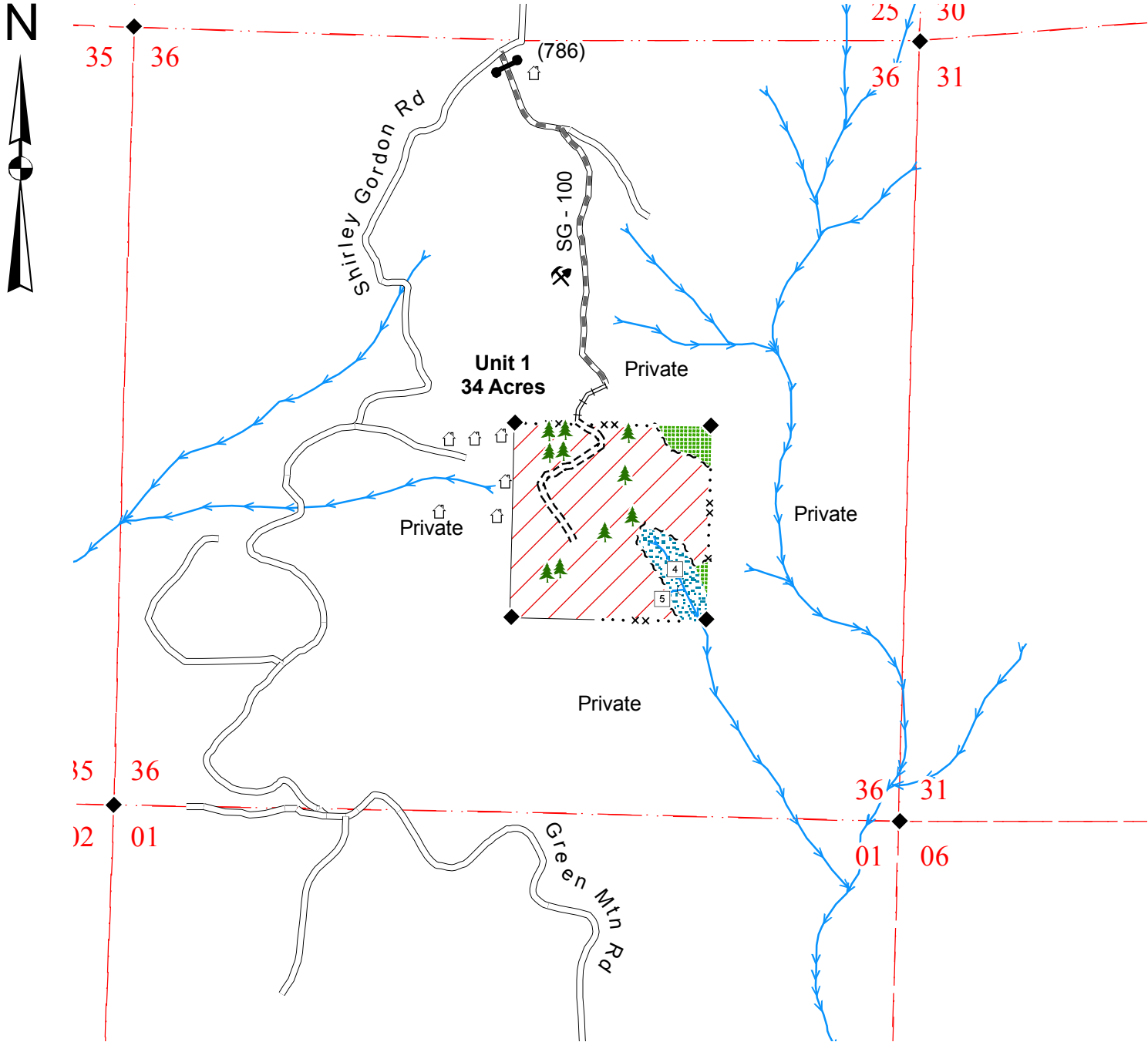
AGREEMENT NO: 30-077232

TRUST(S): Common School (03)

REGION: Pacific Cascade

COUNTY(S): Cowlitz

Township 06 North, Range 01 West, W.M.



Legend

Sale Area

Leave Tree Area

RMZ

Sale Boundary Tags (White)

Leave Tree Tags (Yellow)

Special Management Tags (Blue)

Existing Roads

Pre-haul Maintenance

Required Construction

Required Reconstruction

Streams

Water Type 1 - 5

Leave Trees (Blue Paint)

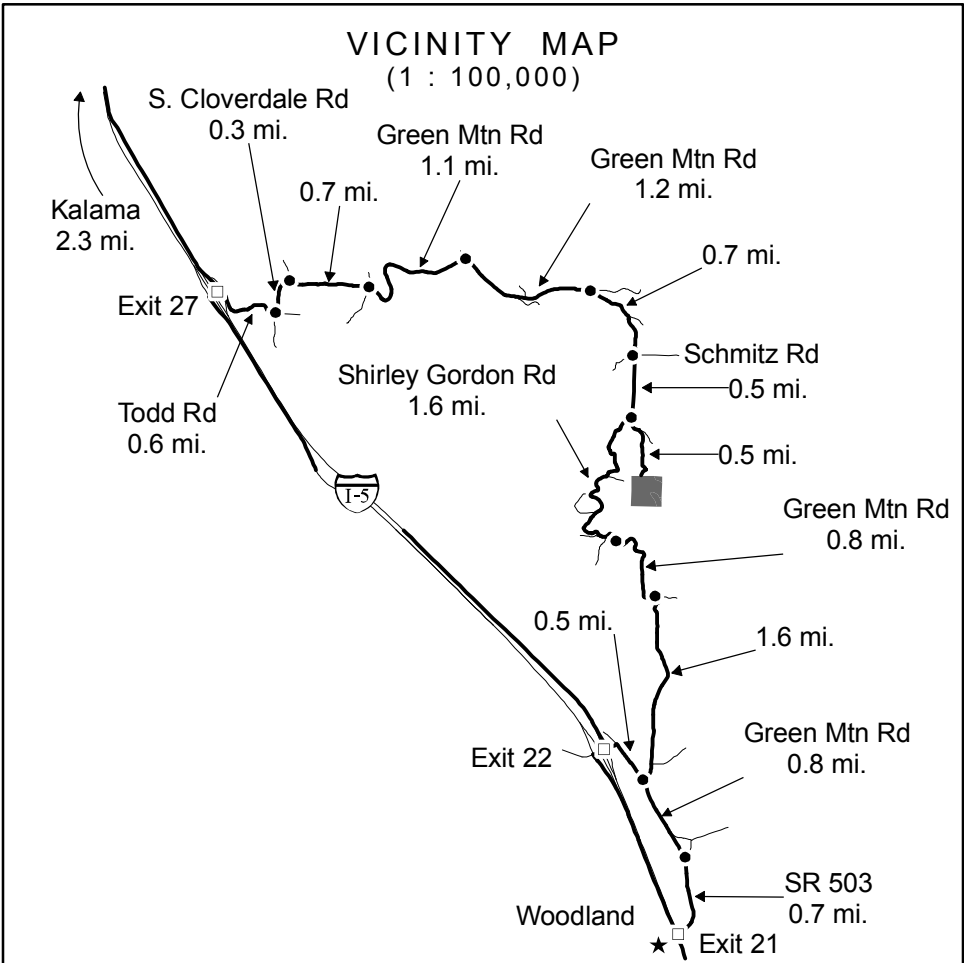
Monumented Corner

Existing Rock Pit

Gate

Private Residence

Drawn By: Shawn B.
Date: August 4, 2005
Scale: 1" = 1000'
Elevation: 1,040ft. - 1,420ft.



TIMBER NOTICE OF SALE

SALE NAME: *GPC*

AGREEMENT NO: *30-077240*

AUCTION: December 15, 2005 starting at 10:00 a.m., **COUNTY:** Grays Harbor
Pacific Cascade Region Office, Castle Rock, WA

SALE LOCATION: Sale located approximately 5 miles southwest of Oakville, WA

PRODUCTS SOLD AND SALE AREA: All timber, except for trees marked with blue paint, leave tree clumps tagged out with leave tree area tags, down timber existing three years prior to the day of sale, snags, and pre-existing stumps, bounded by the following: timber sale boundary tags in Unit #1; timber sale boundary tags, the V-line road, and reproduction in Units #2 and #4; timber sale boundary tags and reproduction in Unit #3 on part(s) of Sections 2 all in Township 15 North, Range 5 West, Sections 27, 28, 33, 34 and 35 all in Township 16 North, Range 5 West, W.M., containing 117 acres, more or less.

ESTIMATED SALE VOLUMES AND QUALITY:

Species	Avg DBH	Ring Count	Total MBF	MBF by Grade								UT
				1P	2P	3P	SM	1S	2S	3S	4S	
Douglas fir	27.9	5	2,010				15		1,586	357	52	
Red alder	15.5		1,299					14	240	665	380	
Maple	15.5		490						18	183	279	10
Red cedar	14.6		21							17	4	
Silver fir	32		20						16	4		
Hemlock	22		14						11	3		
Grand fir	28		10						8	2		
Sale Total			3,864									

MINIMUM BID: \$1,233,000.00 **BID METHOD:** Sealed Bids

PERFORMANCE SECURITY: \$100,000.00 **SALE TYPE:** Lump Sum

EXPIRATION DATE: September 30, 2007 **ALLOCATION:** Export Restricted

BID DEPOSIT: \$123,300.00 or Bid Bond. Said deposit shall constitute an opening bid at the appraised price.

HARVEST METHOD: Cable and shovel harvesting systems may be used. A detailed felling and yarding plan shall be required prior to any harvest activities and approved in writing by the Contract Administrator. Lateral yarding may be required on cable settings. Shovel logging will not occur on slopes greater than 35%. Marbled Murrelet Timing Restrictions; No cable or ground based yarding shall occur within the daily peak activity restriction - one hour before official sunrise to two hours after official sunrise and one hour before official sunset to one hour after official sunset - during the critical habitat nesting season (April 1 - August 31) on Units #2 and #3. This includes hauling or heavy machinery operations on the V-Line Road in Sections 27 and 28, Township 16 North, Range 05 West, W.M. Within shovel logging portions of all units, all hardwood species greater than 1-inch DBH shall be felled or pulled and piled, unless otherwise approved by the Contract Administrator. See Schedule L for additional requirements. Shovel yarding will not be permitted from September 29 to May 1 unless authorized in writing by the Contract Administrator to prevent soil damage and erosion

ROADS: 55.81 stations of optional construction. 49.13 stations of deactivation. Rock is available at no charge from the Cedarville pit in Sec 26, TwN 16N, Rng 05W, W.M. Any damage to any road resulting from any harvest operations will be repaired at the Purchasers expense unless authorized by the Contract Administrator. Road construction will not be permitted from September 30 to May 1 unless authorized in writing by the Contract Administrator.

ACREAGE DETERMINATION

CRUISE METHOD: Acreage was determined using GPS and/or compass and laser rangefinder. The sale area was cruised using a variable plot cruise method. Harvesting activities are estimated to be 30% tracked harvesting methods and 70% cable harvesting methods.

FEES: \$37,950.00 is due on day of sale. \$9.00 per MBF is due upon removal. These are in addition to the bid price.

SPECIAL REMARKS: See vicinity map for gate locations. Gate keys to access State land may be obtained from the region office.

TIMBER SALE MAP

SALE NAME: GPC

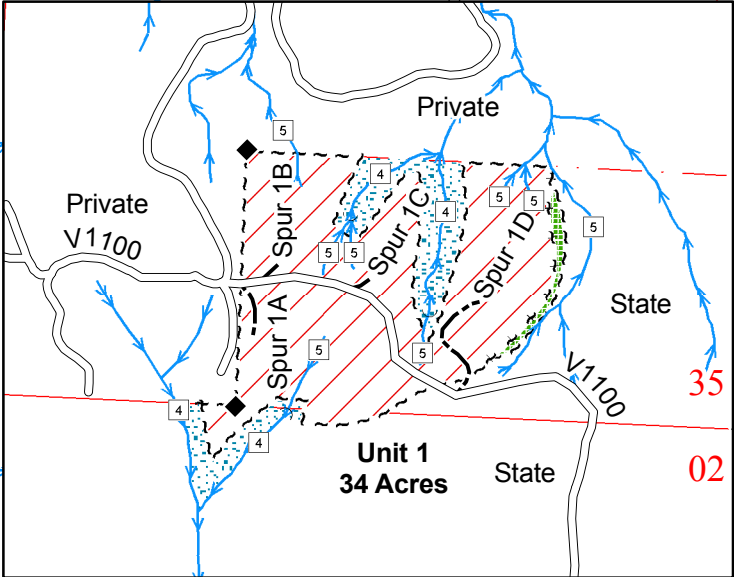
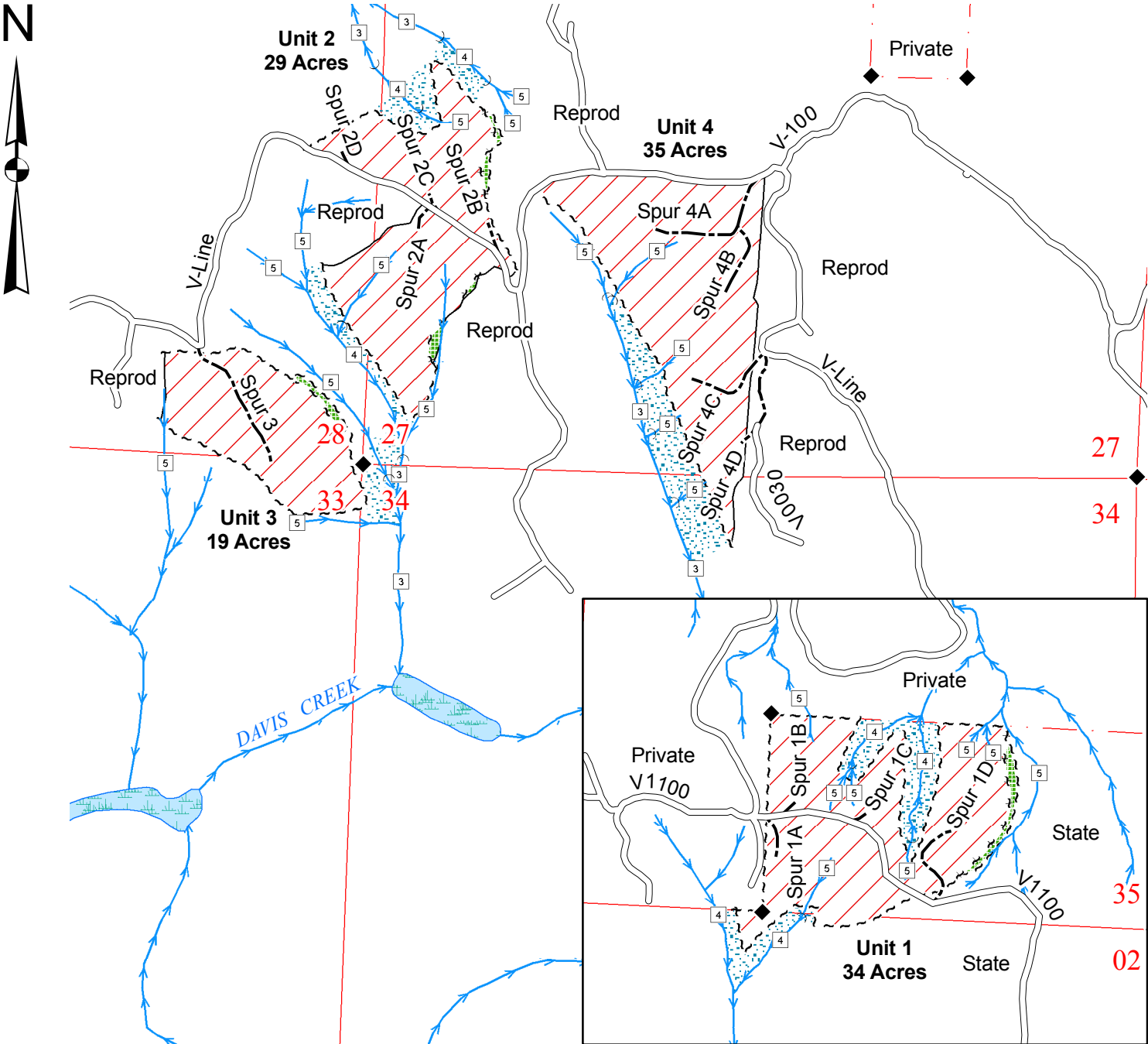
AGREEMENT NO: 30-077240

TRUST(S): Common School (03), Capitol Building (07), & Normal School (08)

REGION: Pacific Cascade

COUNTY(S): Grays Harbor

Township 15 North, Range 05 West, & 16 North, 05 West, W.M.



Legend

Sale Area

Leave Tree Area

RMZ

Sale Boundary Tags (White)

Leave Tree Tags (Yellow)

Existing Roads

Optional Construction

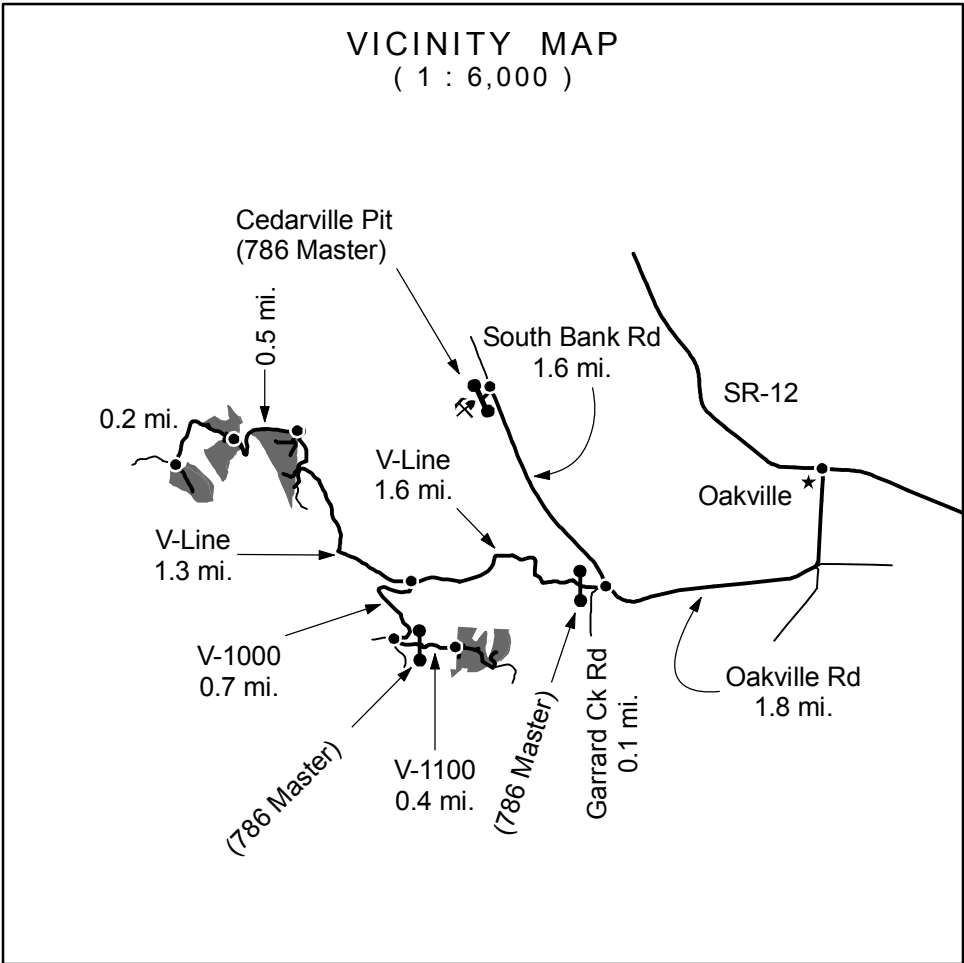
Streams

Water Type 1 - 5

Monumented Corner

Existing Rock Pit

Gate



Drawn By: Shawn B.
Date: May 20, 2005
Scale: 1" = 1000'
Elevation: 160ft. - 640ft.

TIMBER NOTICE OF SALE

SALE NAME: 4TH OF JULY

AGREEMENT NO: 30-077514

AUCTION: December 15, 2005 starting at 10:00 a.m., **COUNTY:** Lewis
Pacific Cascade Region Office, Castle Rock, WA

SALE LOCATION: Sale located approximately 17 miles west of Centralia, WA

PRODUCTS SOLD AND SALE AREA: All timber, except snags, pre-existing stumps, down timber existing two years prior to the day of sale, trees tagged out with leave tree area tags, and leave trees marked with blue paint, bounded by the following: timber sale boundary tags and reprod in Unit #1; timber sale boundary tags, L-1055.1 road and reprod in Unit #2; timber sale boundary tags, reprod and property line in Unit #3; timber sale boundary tags and property line in Unit #4; timber sale boundary tags in Unit #5; timber sale boundary tags in Unit #6; timber sale boundary tags and L-1055.1 road in Unit #7; all timber bounded by right-of-way boundary tags. on part(s) of Sections 31 all in Township 15 North, Range 4 West, Sections 25 and 36 all in Township 15 North, Range 5 West, W.M., containing 107 acres, more or less.

ESTIMATED SALE VOLUMES AND QUALITY:

Species	Avg DBH	Ring Count	Total MBF	MBF by Grade								UT
				1P	2P	3P	SM	1S	2S	3S	4S	
Douglas fir	20.5	78	4,051			20	92		2,961	857	121	
Red alder	14		275						46	135	94	
Maple	12.8		77						8	36	33	
Red cedar	18.1		30							26	4	
Hemlock	8.5	5	6							2	4	
Sale Total			4,439									

MINIMUM BID: \$1,567,000.00 **BID METHOD:** Sealed Bids

PERFORMANCE SECURITY: \$100,000.00 **SALE TYPE:** Lump Sum

EXPIRATION DATE: October 31, 2007 **ALLOCATION:** Export Restricted

BID DEPOSIT: \$156,700.00 or Bid Bond. Said deposit shall constitute an opening bid at the appraised price.

HARVEST METHOD: Cable and shovel logging methods. Lead end suspension required on all cable settings. A detailed felling and yarding plan shall be required prior to any harvest activities and approved in writing by the Contract Administrator. Any and all snags cut because of safety concerns cannot be removed and must remain where they fall. See Schedule L for additional requirements. Shovel yarding will not be permitted from September 30 to May 1 unless authorized in writing by the Contract Administrator.

ROADS: 18.79 stations of required construction. 42.55 stations of required reconstruction. 55.10 stations of optional construction. 121.94 stations of required pre-haul maintenance. 55.10 stations of road abandonment. Rock is available at no charge from a State pit in Sec 34, TwN 15N, Rng 05W, W.M. Any damage to any road resulting from any harvest operations will be repaired at the Purchasers expense unless authorized by the Contract Administrator. Road construction will not be permitted from September 30 to May 1 unless authorized in writing by the Contract Administrator. The hauling of forest products will not be permitted from September 30 to May 1 unless authorized in writing by the Contract Administrator on the L-1000, L-1055, L-1055.1, L-1055.2, L-1055A, L-1055B, L-1056, L-1056A and L-1056B roads

ACREAGE DETERMINATION

CRUISE METHOD: The sale acres were determined by GPS. The sale area was cruised using a variable plot cruise method. Harvesting activities are estimated to be approximately 80% shovel and 20% cable harvesting.

FEES: \$50,000.00 is due on day of sale. \$10.99 per MBF is due upon removal. These are in addition to the bid price.

SPECIAL REMARKS: If Purchaser chooses to tailhold on private property, Purchaser shall obtain permit(s) and assumes responsibility for all costs associated with permit(s). Purchaser must provide the State with a copy of the executed permit(s) or a letter from the private entity indicating that a satisfactory tailhold permit(s) has been consummated between Purchaser and private entity.

TIMBER SALE MAP

SALE NAME: 4TH OF JULY

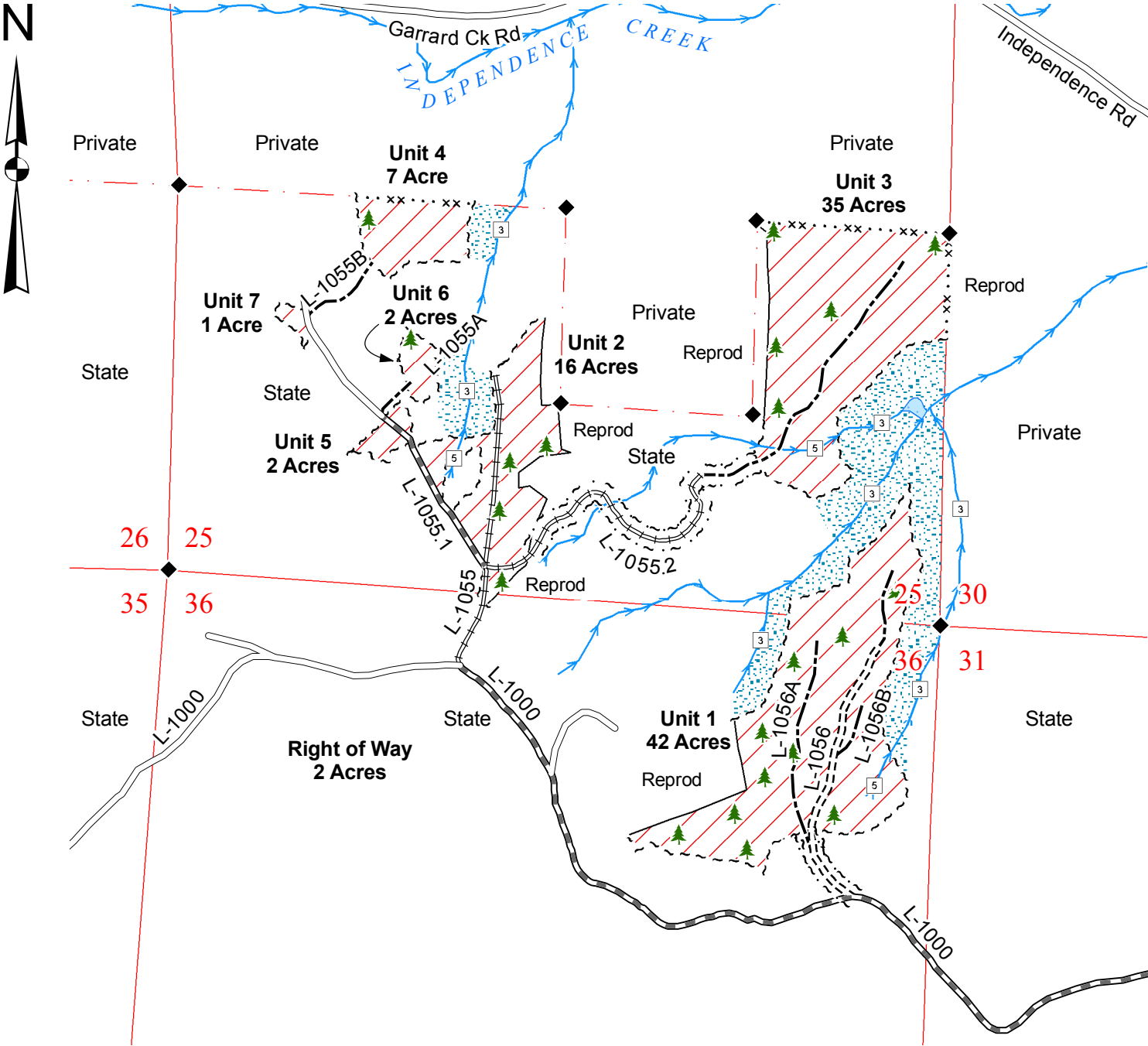
AGREEMENT NO: 30-077514

TRUST(S): State Forest Board Transfer (01) & Common School (03)

REGION: Pacific Cascade

COUNTY(S): Lewis

Township 15 North, Range 05 West, W.M.



Legend

Sale Area

RMZ

Sale Boundary Tags (White)

Right of Way Boundary Tags (Orange)

Property Line

Existing Roads

Pre-haul Maintenance

Required Construction

Required Reconstruction

Optional Construction

Streams

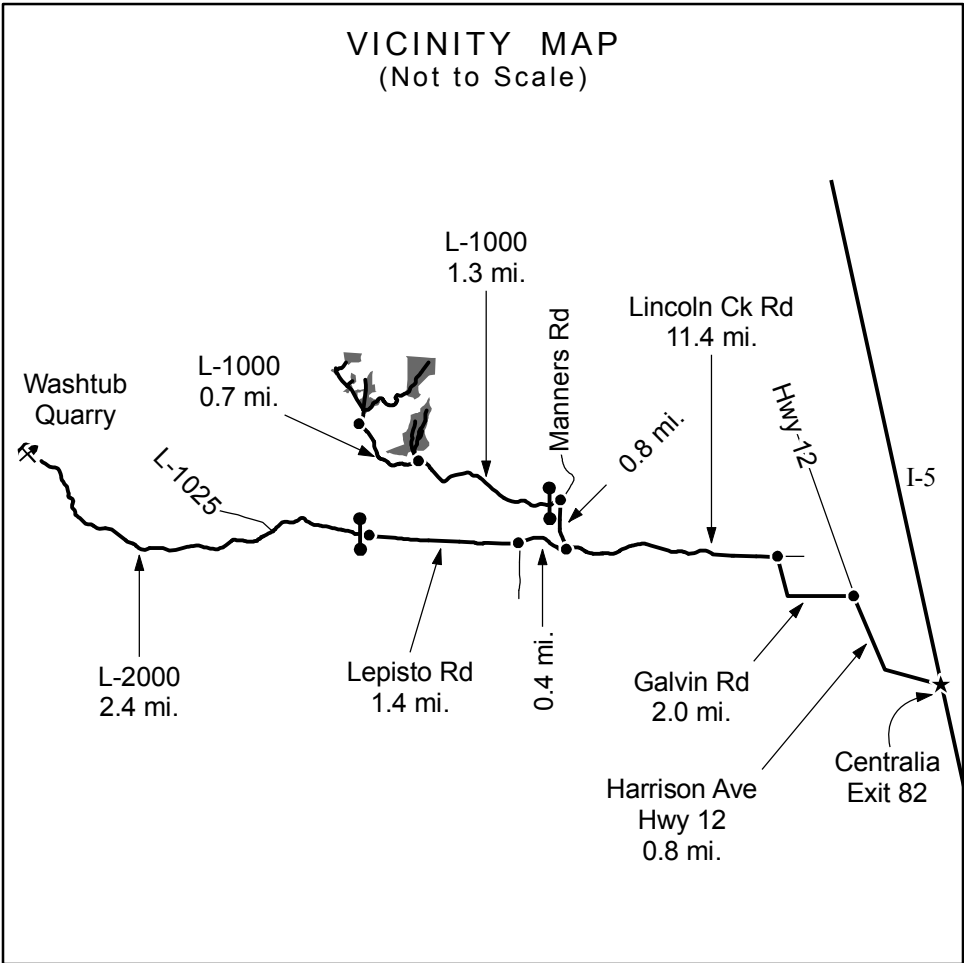
Water Type 1 - 5

Monumented Corner

Leave Trees

Existing Rock Pit

Gate (786 Master)



Drawn By: Shawn B.

Date: October 6, 2005

Scale: 1" = 1000'

Elevation: 240ft. - 560ft.

TIMBER NOTICE OF SALE

SALE NAME: *SISU*

AGREEMENT NO: *30-076846*

AUCTION: December 12, 2005 starting at 10:00 a.m., **COUNTY:** Snohomish
Northwest Region Office, Sedro Woolley, WA

SALE LOCATION: Sale located approximately 7 miles northeast of Sultan

PRODUCTS SOLD AND SALE AREA: All timber, except trees marked with blue paint at DBH and root collar, trees tagged out with yellow leave tree tags, cedar snags, dead and down cedar trees, logs, and stumps, and other blow down trees and snags that do not have needles or small limbs, bounded by white timber sale tags, and orange right of way tags; all timber bound by orange right of way tags on part(s) of Sections 27, 34 and 35 all in Township 29 North, Range 8 East, W.M., containing 85 acres, more or less.

ESTIMATED SALE VOLUMES AND QUALITY:

Species	Avg DBH	Ring Count	Total MBF	MBF by Grade								UT
				1P	2P	3P	SM	1S	2S	3S	4S	
Hemlock	15	8	3,477						1,157	1,901	419	
Douglas fir	18	7	443						246	172	25	
Silver fir	18		361						244	96	21	
Red cedar	14		221							184	37	
Red alder	12		14								14	
Sale Total			4,516									

MINIMUM BID: \$899,000.00 **BID METHOD:** Sealed Bids

PERFORMANCE SECURITY: \$100,000.00 **SALE TYPE:** Lump Sum

EXPIRATION DATE: September 30, 2007 **ALLOCATION:** Export Restricted

BID DEPOSIT: \$89,900.00 or Bid Bond. Said deposit shall constitute an opening bid at the appraised price.

HARVEST METHOD: Shovel and Cable. Cable; cable or shovel on slopes 25% or less. Yarding will not be permitted from November 1 to March 31 unless authorized in writing by the Contract Administrator (this pertains to ground-based yarding only) to reduce soil damage and erosion.

ROADS: 35.67 stations of required construction. 71.08 stations of required reconstruction. 7.87 stations of optional construction. 7.97 stations of optional reconstruction. 40.34 stations of road to be abandoned.

Development of an existing hardrock source (MC3102 Hardrock Pit) at station 12.00 of the MC-31 Road will involve drilling, shooting, and processing rock to generate approximately 568 cubic yards of rip rap and approximately 5,785 cubic yards of 3-inch-minus ballast rock. This rock is available at no cost on State land in Section 28, Township 29 North, Range 8 East, W.M.

Road construction, road reconstruction, road abandonment and the hauling of rock will not be permitted from November 1 to March 31 unless authorized in writing by the Contract Administrator to reduce soil damage and siltation. The hauling of forest products will not be permitted from November 1 to March 31 unless authorized in writing by the Contract Administrator to reduce soil damage and siltation.

ACREAGE DETERMINATION

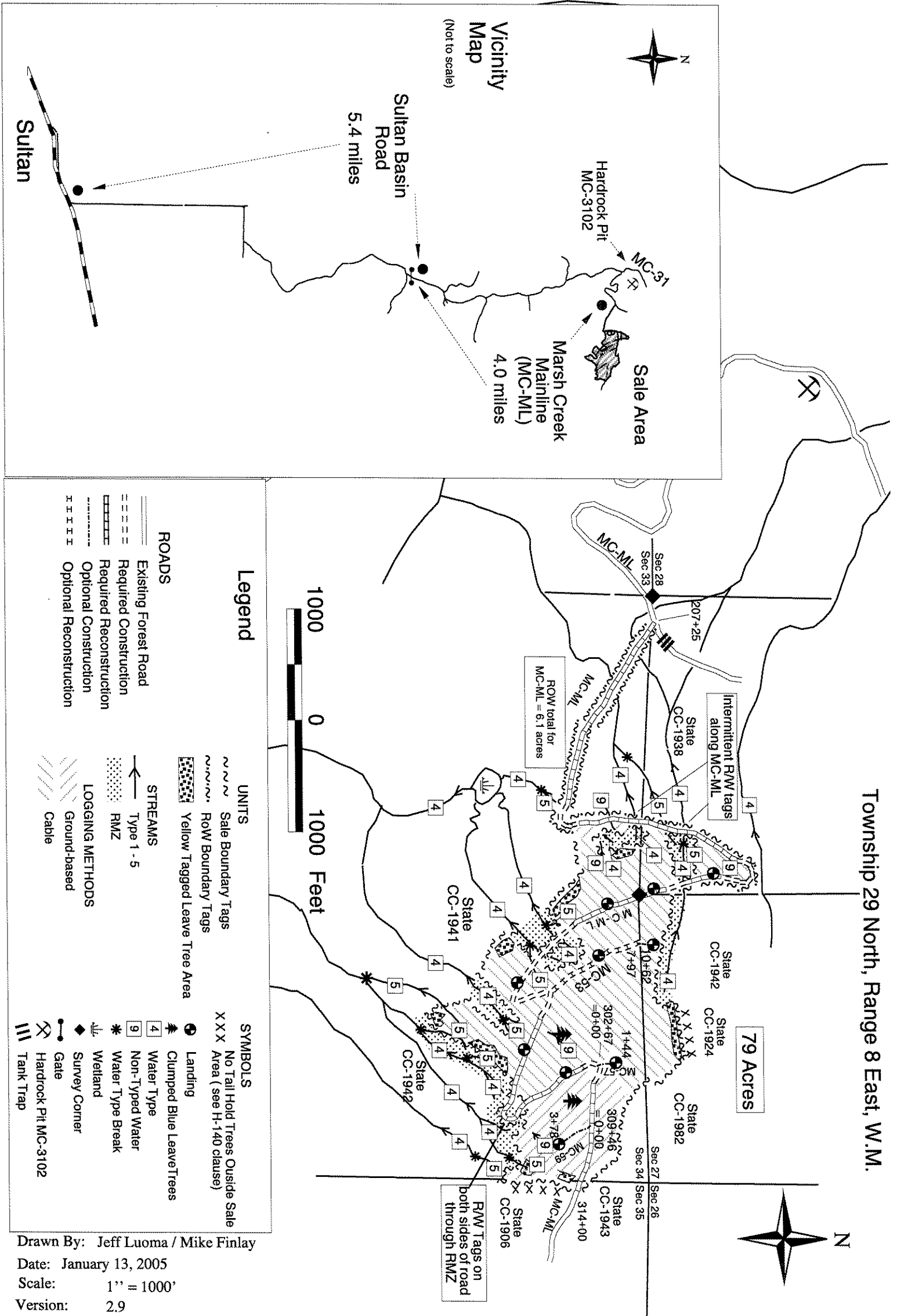
CRUISE METHOD: Acres determined by GPS and Hand traverse. 92.7 acres gross. 2.2 acres deducted for a leave tree areas and 5.1 acres for existing roads. 85.4 acres net. Cruised using variable plot method. Expansion factors used are 54.45 for the Unit, and 40 for the right of way. Sighting height is 4.5 feet. Grid size plot spacing is 400 X 200 feet for the Unit, and 500 feet apart in the right of way. Plot ratio cruise count is 1:1. 40 plots were taken in the Unit, and 3 plots were taken in the right of way, for a total of 43 plots.

FEES: \$59,837.00 is due on day of sale. \$9.00 per MBF is due upon removal. These are in addition to the bid price.

SPECIAL REMARKS: (1) Pre-approval must be obtained by CA in order to trade any of the blue marked trees.
(2) Intermediate supports will most likely be needed in some portions of the sale area.
(3) ***acreage revised on 10/7/07.***

SALE NAME: Sisu
AGREEMENT NO: 30-076846
TRUST(S): Forest Board Transfer (01)
Common School Indemnity (03)

REGION: Northwest
COUNTY(S): Snohomish
Elevation: 1,800 - 2,800 feet



TIMBER NOTICE OF SALE

SALE NAME: SALISH VIEW

AGREEMENT NO: 30-077243

AUCTION: December 12, 2005 starting at 10:00 a.m., **COUNTY:** Snohomish
Northwest Region Office, Sedro Woolley, WA

SALE LOCATION: Sale located approximately 8 miles east of Bryant.

PRODUCTS SOLD AND SALE AREA: All timber, except trees marked with blue paint at DBH and root collar, trees tagged out with yellow leave tree tags, cedar snags, dead and down cedar trees, logs, and stumps, and other blow down trees and snags that do not have needles or small limbs, bounded by white timber sale boundary tags, blue and pink ribbon on property lines, and plantation edges; all timber marked with both white timber sale boundary tags and marked with orange paint along the southwest boundary of unit on part(s) of Sections 8, 9, 16 and 17 all in Township 32 North, Range 6 East, W.M., containing 79 acres, more or less.

ESTIMATED SALE VOLUMES AND QUALITY:

Species	Avg DBH	Ring Count	Total MBF	MBF by Grade								UT
				1P	2P	3P	SM	1S	2S	3S	4S	
Douglas fir	26	6	875				30		696	126	23	
Red alder	17		676						313	149	204	10
Red cedar	17		368							336	32	
Maple	20		142						10	117	15	
Hemlock	11	6	119							34	44	41
Cottonwood	22		24					15	8		1	
Sale Total			2,204									

MINIMUM BID: \$792,000.00 **BID METHOD:** Sealed Bids

PERFORMANCE SECURITY: \$100,000.00 **SALE TYPE:** Lump Sum

EXPIRATION DATE: September 30, 2007 **ALLOCATION:** Export Restricted

BID DEPOSIT: \$79,200.00 or Bid Bond. Said deposit shall constitute an opening bid at the appraised price.

HARVEST METHOD: Shovel and Cable. Cable; cable or shovel on slopes less than 25%, may include one round trip with feller-buncher on slope up to 35% to access felling on slopes 25% or less, with prior approval from Contract Administrator. May include one round trip with shovel on slopes up to 35% to access yarding on slopes less than or equal to 25% with prior approval from Contract Administrator.

ROADS: 37.31 stations of required construction. 2.00 stations of required reconstruction. 16.35 stations of optional construction. 16.35 stations of new road to be abandoned if built.

Development of an existing hardrock source (Cedarvale Hardrock Pit) at milepost 0.1 of the CV-0902 Road will involve clearing, stripping, drilling, shooting, and processing rock to generate approximately 197 cubic yards of rip rap and approximately 6,200 cubic yards of 3-inch-minus ballast rock, and 160 cubic yards of shot rock. This rock is available at no cost on State land in Section 9, Township 32 North, Range 6 East, W.M

Road construction, road reconstruction, road abandonment, and the hauling of rock will not be permitted from November 1 to March 31 unless authorized in writing by the Contract Administrator to reduce soil damage and siltation. The hauling of forest products will not be permitted from November 1 to March 31 unless authorized in writing by the Contract Administrator to reduce soil damage and siltation.

ACREAGE DETERMINATION

CRUISE METHOD: Acres determined by GPS traverse. 81 acres gross. 2 acres deducted for a leave tree areas. 79 acres net. Cruised using variable plot method. Expansion factor used is 40.00. Sighting height is 4.5 feet. Grid size plot spacing is 320 X 200 feet. Plot ratio cruise count is 1:1. 51 plots were taken in the Unit.

FEES: \$29,203.00 is due on day of sale. \$9.00 per MBF is due upon removal. These are in addition to the bid price.

SPECIAL REMARKS: None.

TIMBER SALE MAP

SALE NAME: Salish View

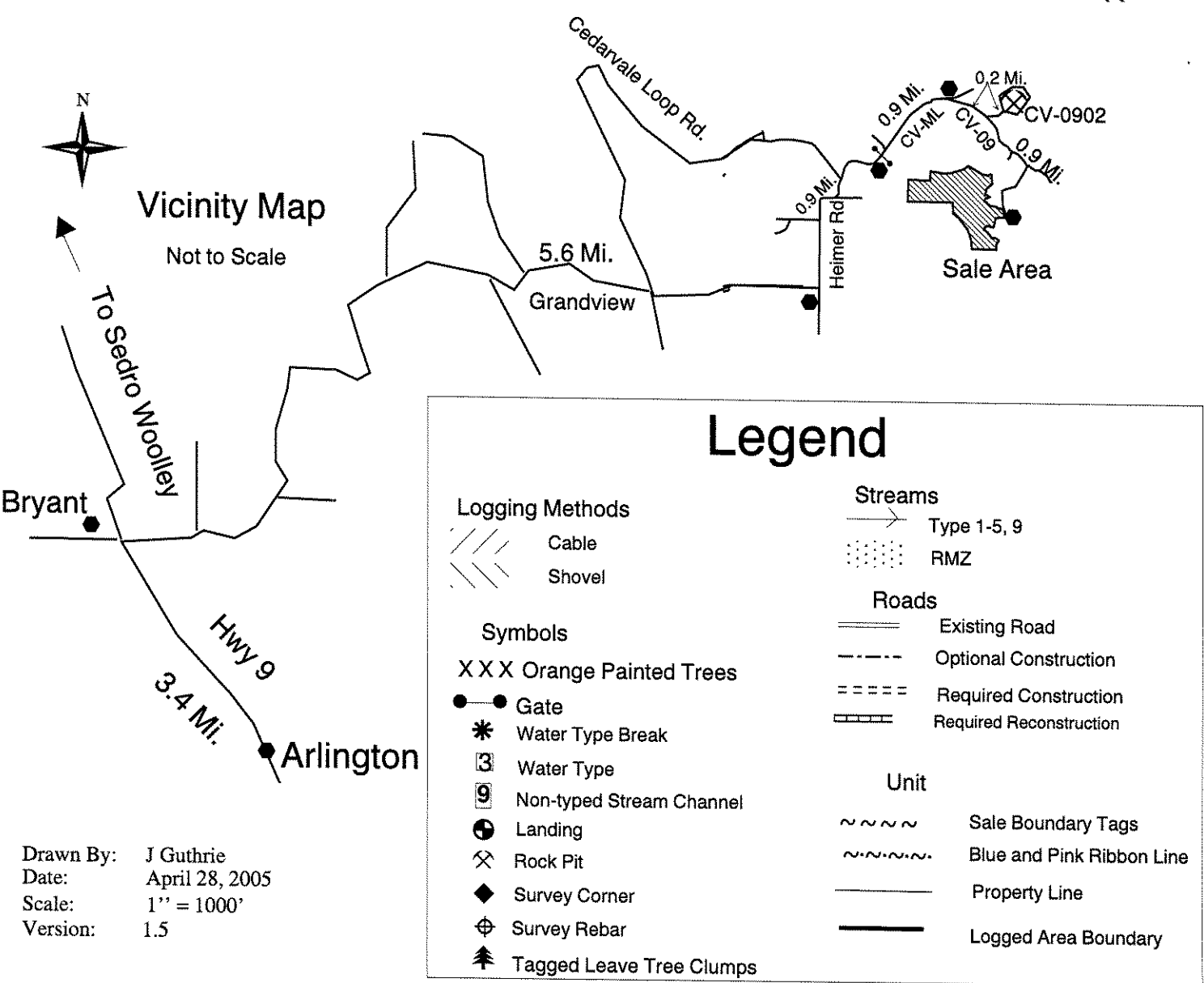
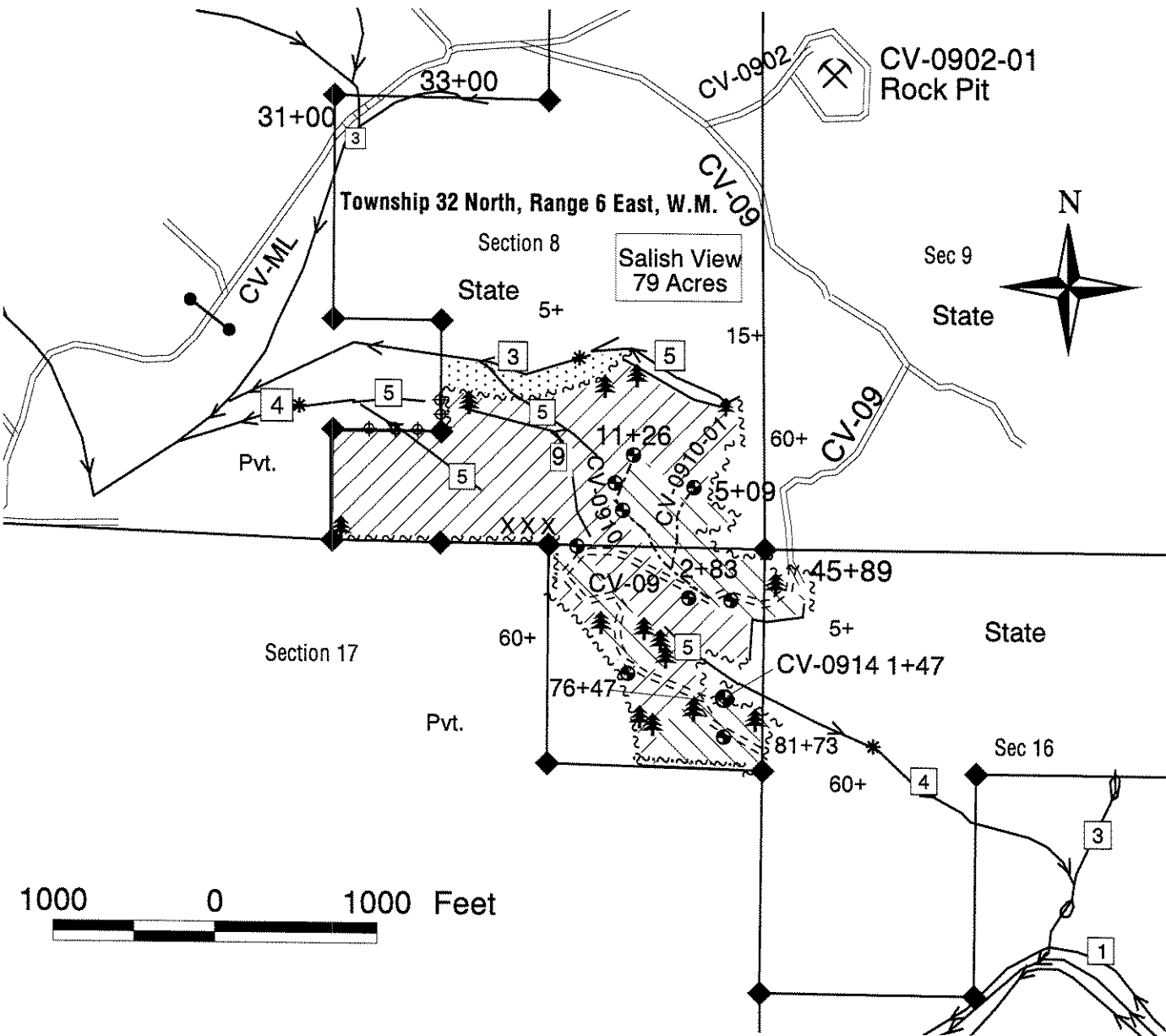
AGREEMENT NO: 30-077243

TRUST(S): Forest Board Transfer (01)

REGION: Northwest

COUNTY: Snohomish

ELEVATION: 600 - 1200 Feet



TIMBER NOTICE OF SALE

SALE NAME: CORRAL

AGREEMENT NO: 30-077235

AUCTION: December 15, 2005 starting at 10:00 a.m., **COUNTY:** Thurston
Pacific Cascade Region Office, Castle Rock, WA

SALE LOCATION: Sale located approximately 3 miles west of Little Rock, WA

PRODUCTS SOLD AND SALE AREA: All timber, except snags, pre-existing stumps, down timber existing three years prior to the day of sale, trees tagged out with leave tree area tags, and trees marked with blue paint, bounded by the following: timber sale boundary tags, reprod, the E-9000 road, and property line in Unit #1; timber sale boundary tags, E-9000, and reprod in Unit #2; timber sale boundary tags, reprod, E-8010 and E-8012 road in Unit #3; timber sale boundary tags, reprod, and the D-4600 road in Unit #4; all timber bounded by right-of-way boundary tags on part(s) of Sections 4, 5 and 6 all in Township 16 North, Range 3 West, Sections 31 and 32 all in Township 17 North, Range 3 West, W.M., containing 163 acres, more or less.

ESTIMATED SALE VOLUMES AND QUALITY:

Species	Avg DBH	Ring Count	Total MBF	MBF by Grade								UT
				1P	2P	3P	SM	1S	2S	3S	4S	
Douglas fir	22	9	7,630			71	550		5,084	1,793	132	
Red alder	13		33							11	22	
Red cedar	12.3		24								24	
Maple	13.6		22								22	
Grand fir	13		5							4	1	
Hemlock	11	7	3								3	
Sale Total			7,717									

MINIMUM BID: \$3,630,000.00 **BID METHOD:** Sealed Bids

PERFORMANCE SECURITY: \$100,000.00 **SALE TYPE:** Lump Sum

EXPIRATION DATE: October 31, 2007 **ALLOCATION:** Export Restricted

BID DEPOSIT: \$363,000.00 or Bid Bond. Said deposit shall constitute an opening bid at the appraised price.

HARVEST METHOD: Cable and shovel logging methods, with a tracked skidder being allowed for the removal of poles only. Shovel and tracked harvesting equipment are restricted to slopes of 35% and less. A detailed felling and yarding plan shall be required prior to any harvest activities and approved in writing by the Contract Administrator. Shovel will pull up undesirable hardwood species and dispose of in such an arrangement approved by the Contract Administrator. See Schedule L for additional requirements. Falling and Yarding will not be permitted from April 1 to October 31 unless authorized in writing by the Contract Administrator within Units #1 and #4 only.

ROADS: 19.76 stations of required construction. 2.20 stations of required reconstruction. 118.86 stations of optional construction. 3.50 stations of pre-haul maintenance. 26.00 stations of road abandonment. 82.67 stations of road deactivation. Rock is available at no charge from two State pits in Sec 29, Twn 17N, Rng 03W and Sec 10, Twn 16N, Rng 03W. Road construction will not be permitted from September 30 to May 1 unless authorized in writing by the Contract Administrator.

ACREAGE DETERMINATION

CRUISE METHOD: The sale acres were determined by GPS. The sale area was cruised using a variable plot cruise method. Harvesting activities are estimated to be approximately 75% shovel and 25% cable harvesting.

FEES: \$50,000.00 is due on day of sale. \$15.77 per MBF is due upon removal. These are in addition to the bid price.

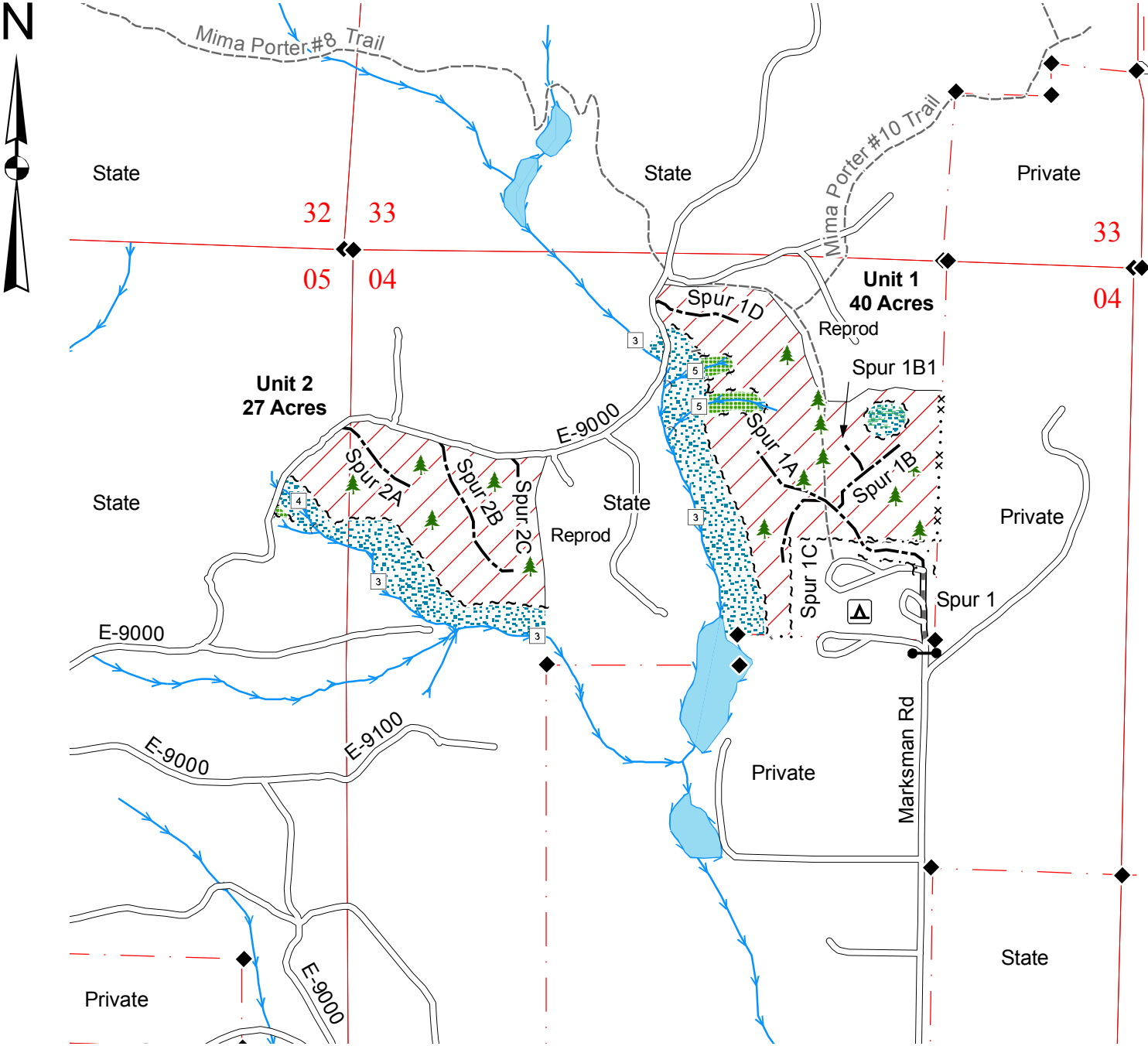
SPECIAL REMARKS: Purchaser shall provide a written Extreme Hazard Abatement plan prior to the beginning of logging operations. No operations shall occur on any weekends, State recognized holidays, or from 7 p.m. to 7 a.m. on weekdays in Unit #1 only. Units #1 and #4 shall have no operations, except road construction, between April 1 and October 31. Recreation trails may only be closed for a total of two (2) weeks for road construction, between April 1 and October 31. The Mima Porter Trails shall be posted, closed, and a watchman provided during harvest operations and re-opened as per clause S-150 within fifteen days of completion of yarding operations on each harvest unit.

TIMBER SALE MAP

SALE NAME: CORRAL
AGREEMENT NO: 30-077235
TRUST(S): IFLR (42)

REGION: Pacific Cascade
COUNTY(S): Thurston

Township 16 North, Range 03 West, & T17N, R03W, W.M.



Legend

Sale Area

Leave Tree Area

RMZ

WMZ

Sale Boundary Tags (White)

Leave Tree Tags (Yellow)

Private Property Lines

Right of Way Boundary Tags (Orange)

Existing Roads

Pre-haul Maintenance

Required Construction

Required Reconstruction

Optional Construction

Required Abandonment

Streams

Water Type 1 - 5

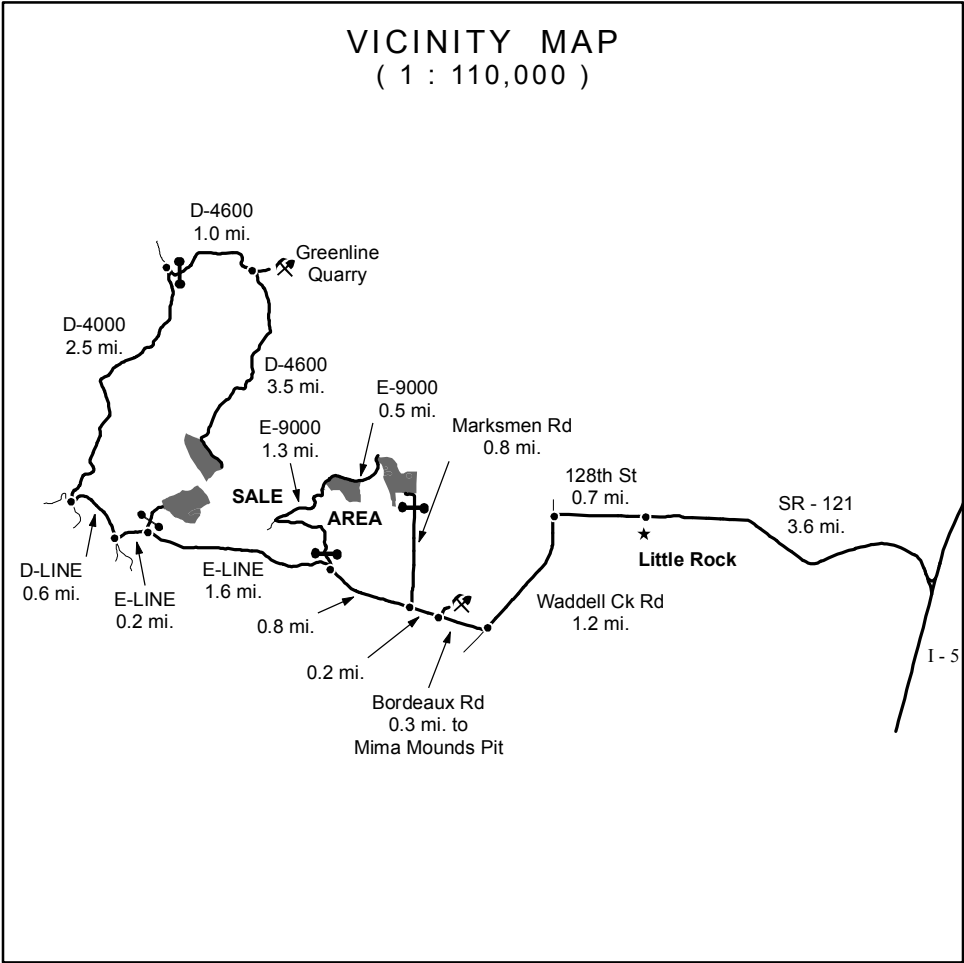
Monumented Corner

Leave Trees (Blue Paint)

Existing Rock Pit

Gate (786 Master)

Drawn By: Shawn B.
Date: October 5, 2005
Scale: 1" = 1000'
Elevation: 350ft. - 800ft.

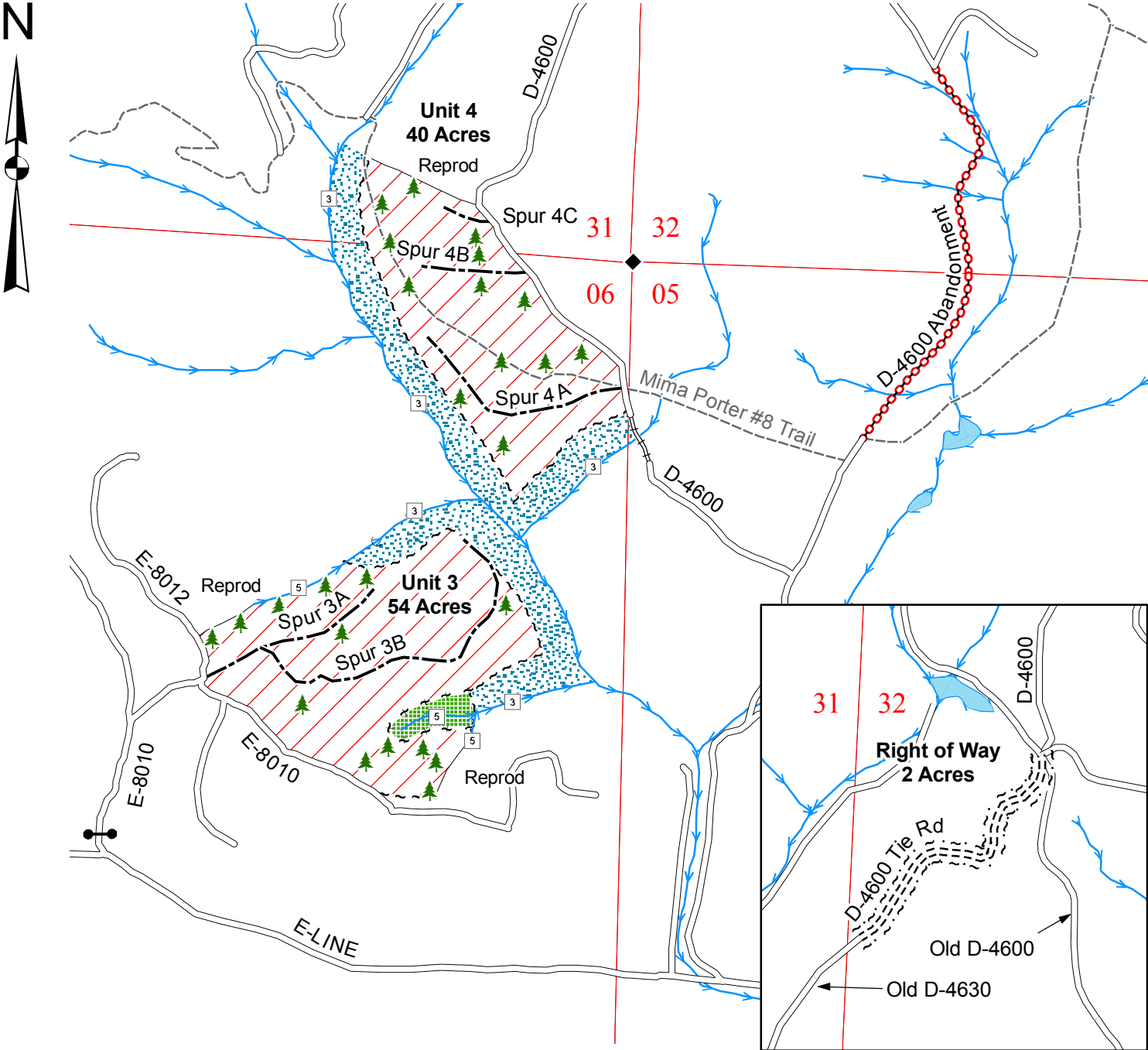


TIMBER SALE MAP

SALE NAME: CORRAL
AGREEMENT NO: 30-077235
TRUST(S): IFLR (42)

REGION: Pacific Cascade
COUNTY(S): Thurston

Township 16 North, Range 03 West, & T17N, R03W, W.M.



Legend

Sale Area

Leave Tree Area

RMZ

WMZ

Sale Boundary Tags (White)

Leave Tree Tags (Yellow)

Private Property Lines

Right of Way Boundary Tags (Orange)

Existing Roads

Pre-haul Maintenance

Required Construction

Required Reconstruction

Optional Construction

Required Abandonment

Streams

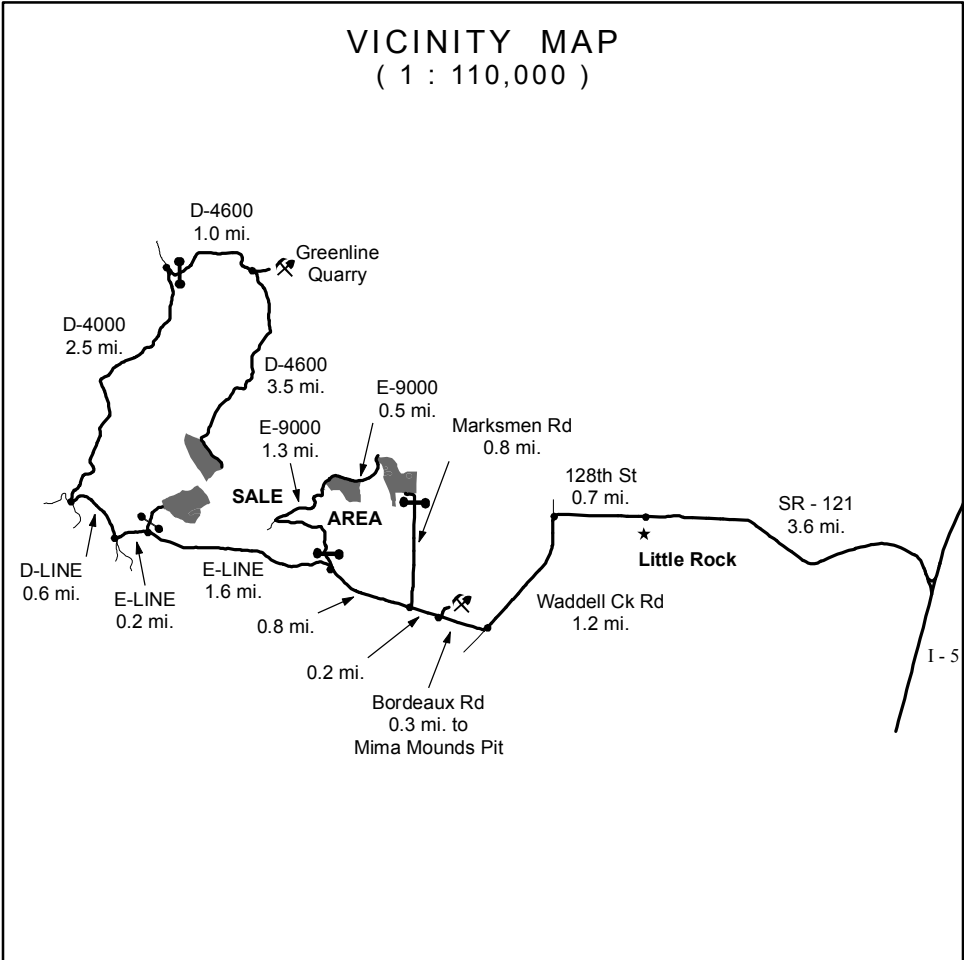
Water Type 1 - 5

Monumented Corner

Leave Trees (Blue Paint)

Existing Rock Pit

Gate (786 Master)



Drawn By: Shawn B.
Date: October 5, 2005
Scale: 1" = 1000'
Elevation: 350ft. - 800ft.

TIMBER NOTICE OF SALE

SALE NAME: WATCH

AGREEMENT NO: 30-077515

AUCTION: December 15, 2005 starting at 10:00 a.m., **COUNTY:** Thurston
Pacific Cascade Region Office, Castle Rock, WA

SALE LOCATION: Sale located approximately 8 miles northwest of Littlerock, WA

**PRODUCTS SOLD
AND SALE AREA:** All timber, except trees marked with blue paint, trees bounded out by leave tree area tags, snags, pre-existing stumps, and down timber existing three years prior to the day of sale, bounded by the following: timber sale boundary tags, reprod, and the C-9300 road in Unit #1, timber sale boundary tags and the C-8200 road in Unit #2 on part(s) of Sections 6, 7, 9, 16 and 21 all in Township 17 North, Range 3 West, W.M., containing 95 acres, more or less.

ESTIMATED SALE VOLUMES AND QUALITY:

Species	Avg DBH	Ring Count	Total MBF	MBF by Grade								UT
				1P	2P	3P	SM	1S	2S	3S	4S	
Douglas fir	18	10	3,890				84		2,360	1,307	139	
Red alder	12.5		123					22		33	68	
Maple	18		35						15	9	11	
Hemlock	12.9	9	29						6	18	5	
Red cedar	27		7							6	1	
Sale Total			4,084									

MINIMUM BID: \$1,432,000.00 **BID METHOD:** Sealed Bids

**PERFORMANCE
SECURITY:** \$100,000.00 **SALE TYPE:** Lump Sum

EXPIRATION DATE: September 30, 2007 **ALLOCATION:** Export Restricted

BID DEPOSIT: \$143,200.00 or Bid Bond. Said deposit shall constitute an opening bid at the appraised price.

HARVEST METHOD: Cable harvesting equipment with shovel harvesting equipment being restricted to slopes of 35% and less. Poles may be harvested using a tracked skidder. A detailed felling and yarding plan shall be required prior to any harvest activities and approved in writing by the Contract Administrator. Lead end suspension required on all cable settings. Lateral yarding capabilities may be required on cable settings. Within the shovel logging portions of unit #1, pull all hardwood brush greater than 1 inch in diameter. See Schedule L for additional requirements. Shovel yarding will not be permitted from September 30 to May 1 unless authorized in writing by the Contract Administrator.

ROADS: 32.01 stations of optional construction. 43.40 stations of pre-haul maintenance. 1 1/2 inch minus crushed rock may be obtained from the Waddell Basalt pit stockpile on State land at no charge in Sec 21, TwN 17N, Rng 03W, W.M. Purchaser shall crush approximately 5,027 cubic yards of rock to 4 inch minus specifications, of which 3,000 cubic yards shall be stock piled. Any damage to any road resulting from any harvest operations will be repaired at the Purchasers expense unless authorized by the Contract Administrator. Road construction will not be permitted from September 30 to May 1 unless authorized in writing by the Contract Administrator.

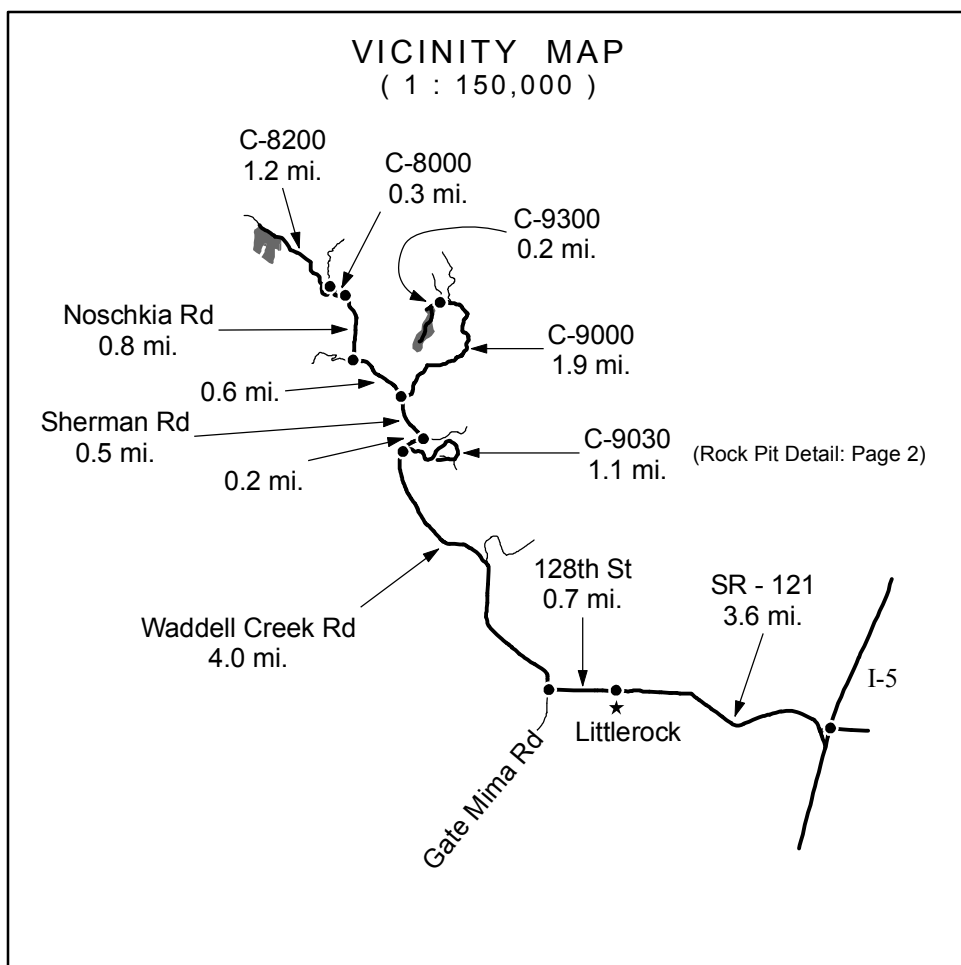
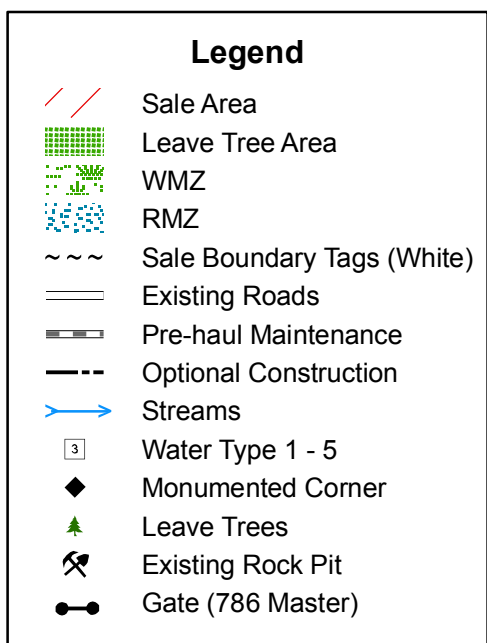
ACREAGE DETERMINATION

CRUISE METHOD: Acreage determined by GPS. The sale was cruised using a variable plot cruise method. Harvesting activities are estimated to be 70% cable, 30% shovel harvesting equipment.

FEES: \$50,000.00 is due on day of sale. \$10.00 per MBF is due upon removal. These are in addition to the bid price.

SPECIAL REMARKS: Gate keys may be obtained from the Region office. See vicinity map for gate locations. Haul roads have been designed to allow for the transport of poles 100 feet in length or less. If Purchaser chooses to remove poles greater than 100 feet in length a haul plan must be submitted in writing to the Contract Administrator, which details the desired haul route, additional reconstruction needs, and mitigation for damage, which is a result of hauling oversize material. If approved in writing by the Contract Administrator, all work shall be at the expense of the Purchaser. Recreation trails shall be posted, closed, and a watchman provided during harvest operations. Trails shall be re-opened as per clause S-150 within fifteen days of completion of yarding operations on each harvest unit.

SALE NAME: WATCH **REGION:** Pacific Cascade
AGREEMENT NO: 30-077515 **COUNTY(S):** Thurston
TRUST(S): State Forest Board Transfer (01), Common School (03), & Forest Board Repayment (42)
Township 17 North, Range 03 West, W.M.



Drawn By: Shawn B.
Date: July 29, 2005
Scale: 1" = 1000'
Elevation: 560ft. - 1,480ft.

TIMBER SALE MAP

SALE NAME: WATCH

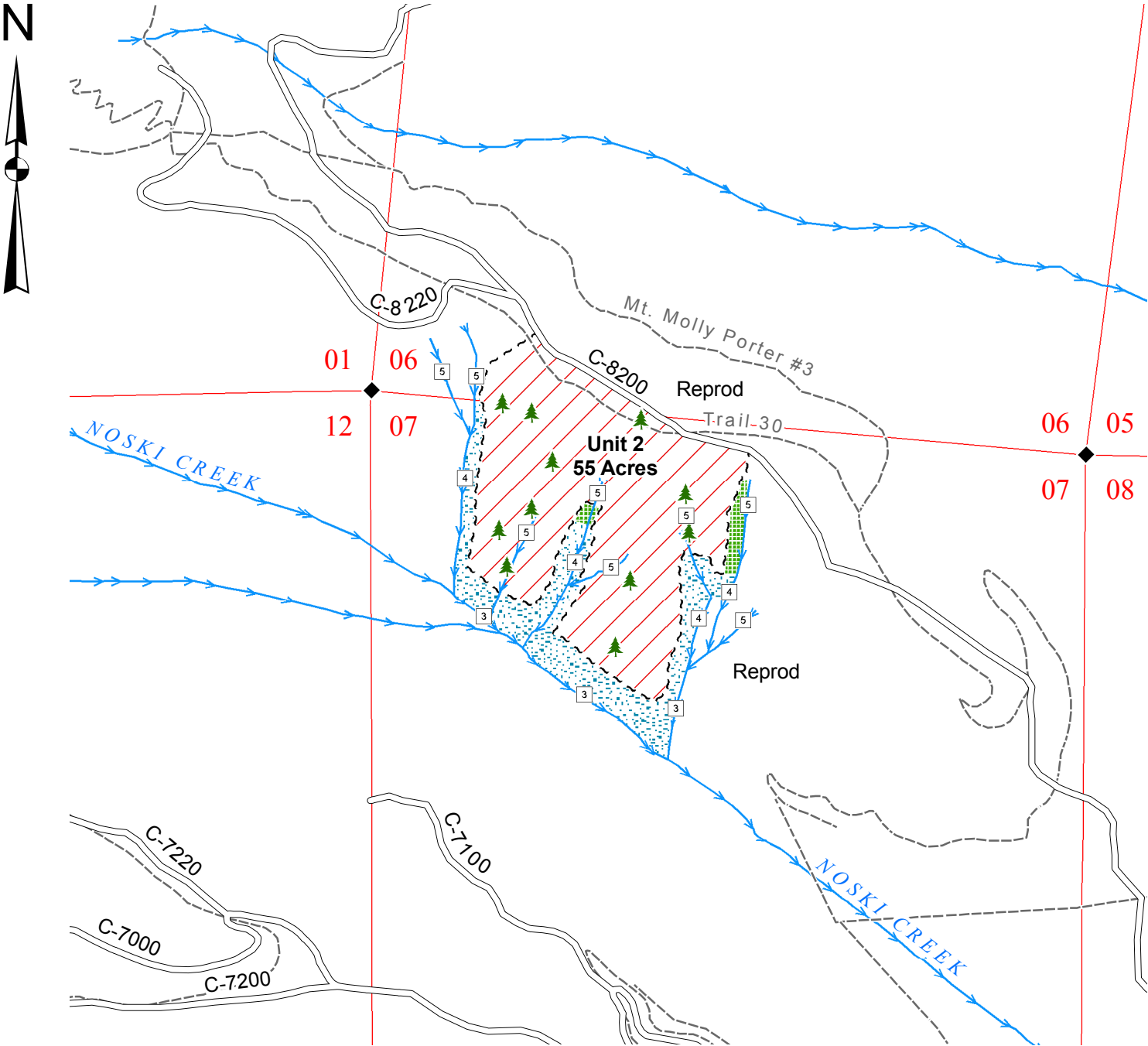
AGREEMENT NO: 30-077515

TRUST(S): State Forest Board Transfer (01), Common School (03), & Forest Board Repayment (42)

REGION: Pacific Cascade

COUNTY(S): Thurston

Township 17 North, Range 03 West, W.M.



Legend

Sale Area

Leave Tree Area

WMZ

RMZ

Sale Boundary Tags (White)

Existing Roads

Pre-haul Maintenance

Optional Construction

Streams

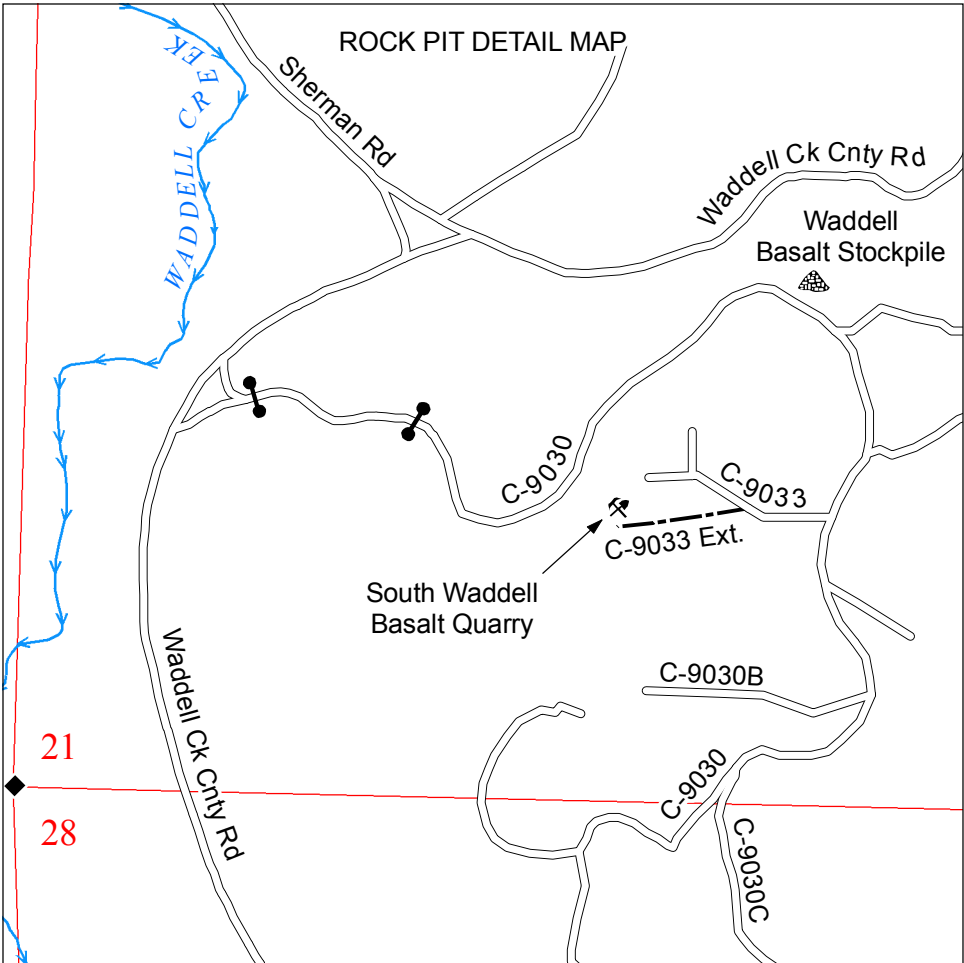
Water Type 1 - 5

Monumented Corner

Leave Trees

Existing Rock Pit

Gate (786 Master)



Drawn By: Shawn B.

Date: July 29, 2005

Scale: 1" = 1000'

Elevation: 560ft. - 1,480ft.

TIMBER NOTICE OF SALE

SALE NAME: CLUTCH

AGREEMENT NO: 30-076839

AUCTION: December 15, 2005 starting at 10:00 a.m., **COUNTY:** Wahkiakum
Pacific Cascade Region Office, Castle Rock, WA

SALE LOCATION: Sale located approximately 15 miles northwest of Longview, WA

PRODUCTS SOLD AND SALE AREA: All timber, except trees bounded by Leave Tree Area tags, trees marked with blue paint, down timber existing on the day of sale, snags, and pre-existing stumps, bounded by Timber Sale Boundary tags, reproduction, the E-1200 and E-1230 roads on part(s) of Sections 24 all in Township 9 North, Range 5 West, Sections 19 and 30 all in Township 9 North, Range 4 West, W.M., containing 76 acres, more or less.

ESTIMATED SALE VOLUMES AND QUALITY:

Species	Avg DBH	Ring Count	Total MBF	MBF by Grade								UT
				1P	2P	3P	SM	1S	2S	3S	4S	
Douglas fir	18.7	7	1,982						1,145	673	164	
Hemlock	15.8	8	1,431						734	544	153	
Red alder	21.2		13						6	5	2	
Sale Total			3,426									

MINIMUM BID: \$1,255,000.00 **BID METHOD:** Sealed Bids

PERFORMANCE SECURITY: \$100,000.00 **SALE TYPE:** Lump Sum

EXPIRATION DATE: October 31, 2006 **ALLOCATION:** Export Restricted

BID DEPOSIT: \$125,500.00 or Bid Bond. Said deposit shall constitute an opening bid at the appraised price.

HARVEST METHOD: Cable systems, shovel equipment, and tracked skidder. Lead end suspension required on all cable settings. Landing debris must be piled as directed by the Contract Administrator. Yarding will not be permitted from November 1 to April 30 unless authorized in writing by the Contract Administrator Approximately 100% of the sale area may be harvested using ground-based systems.

ROADS: 29.59 stations of required construction. 24.02 stations of optional construction. 17.32 stations of light road abandonment. Rock is available from a State Pit in Sec 36, TwN 9N, Rng 05W, W.M. and a Stockpile located in Section 31, Township 9 North, Range 5 West, W.M. The Purchaser shall manufacture 6000 cubic yards truck measure of 4 inch minus rock, of which 600 cubic yards shall be stockpiled. Road construction will not be permitted from September 30 to May 1 unless authorized in writing by the Contract Administrator.

ACREAGE DETERMINATION

CRUISE METHOD: Acreage determined by laser traverse. See Pre-Cruise and Cruise Narratives. Error of closure: 1:345. Gross acres: 79. Acres deducted for leave trees: 3. Acres of even-aged harvest: 68. Acres of thinning: 8 acres.

FEES: \$45,390.00 is due on day of sale. \$9.00 per MBF is due upon removal. These are in addition to the bid price.

SPECIAL REMARKS: Vine maple clumps must be uprooted and piled. Slash must be piled to provide at least 360 well distributed plantable spots per acre as directed by the Contract Administrator.

TIMBER SALE MAP

SALE NAME: CLUTCH

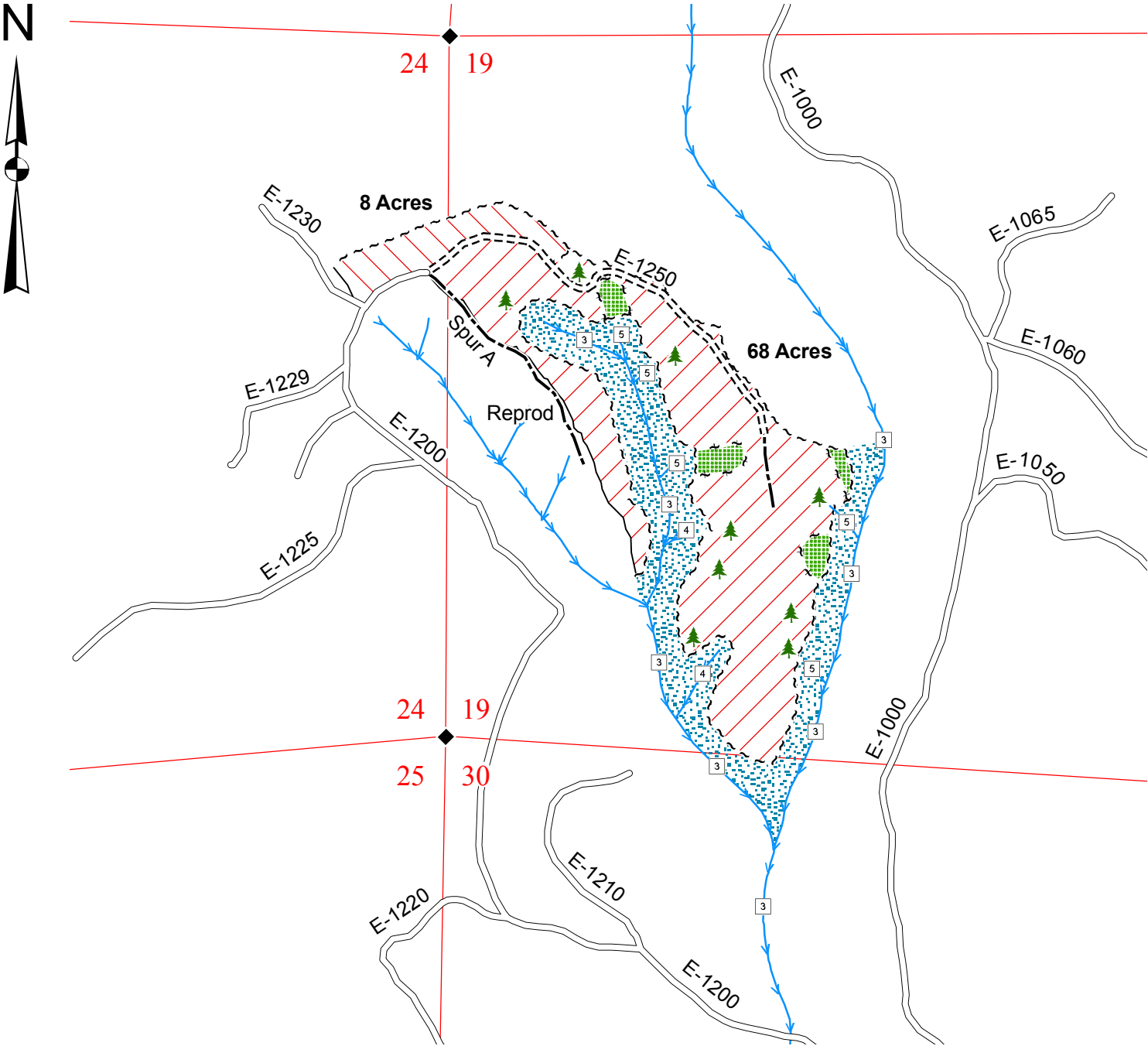
AGREEMENT NO: 30-076839

TRUST(S): State Forest Board Transfer (01)

REGION: Pacific Cascade

COUNTY(S): Wahkiakum

Township 09 North, Range 04 West, & T09N R05W, W.M.



Legend

Regeneration Area

Thinning Area

Leave Tree Area

RMZ

Sale Boundary Tags (White)

Leave Tree Tags (Yellow)

Existing Roads

Required Construction

Optional Construction

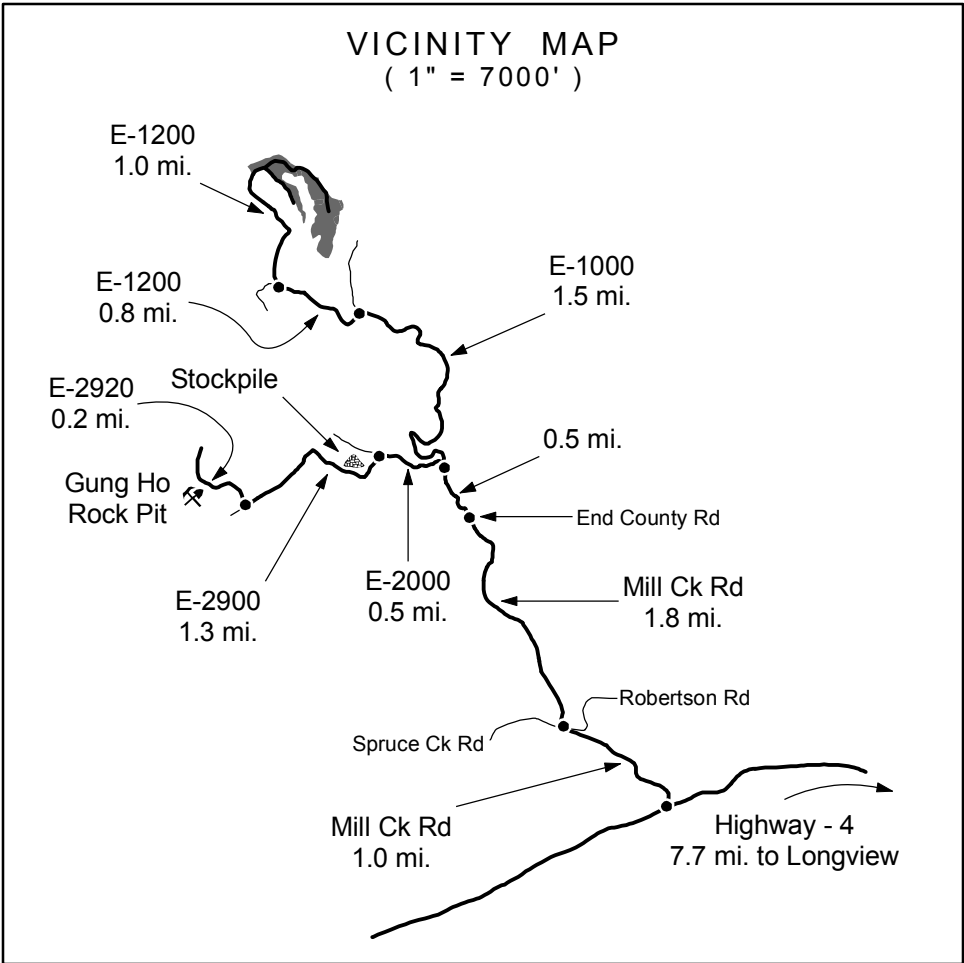
Streams

Water Type 1 - 5

Monumented Corner

Leave Trees (Blue Paint)

Existing Rock Pit



Drawn By: Shawn B.

Date: August 29, 2005

Scale: 1" = 1000'

Elevation: 700ft. - 1,160ft.

TIMBER NOTICE OF SALE

SALE NAME: SANTA MARIA

AGREEMENT NO: 30-077133

AUCTION: December 12, 2005 starting at 10:00 a.m., **COUNTY:** Whatcom
Northwest Region Office, Sedro Woolley, WA

SALE LOCATION: Sale located approximately 6 miles southeast of Acme

PRODUCTS SOLD AND SALE AREA: All timber, except trees marked with blue paint on trunk and root collar, trees tagged out with yellow leave tree tags, cedar snags, dead and down cedar trees, logs and stumps, bounded as follows: by white timber sale boundary tags and the E-3000 Road in Unit #1; by white timber sale boundary tags and a young conifer plantation to the west in Unit #2; by white timber sale boundary tags, the E-1000 Road, and an abandoned spur road to the east in Unit #3; by white timber sale boundary tags in Unit #4; all timber bounded by orange right-of-way boundary tags for the right-of-way leading to Units #1, 2, and 4 on part(s) of Sections 25 and 36 all in Township 37 North, Range 5 East, W.M., containing 66 acres, more or less.

ESTIMATED SALE VOLUMES AND QUALITY:

Species	Avg DBH	Ring Count	Total MBF	MBF by Grade								UT
				1P	2P	3P	SM	1S	2S	3S	4S	
Douglas fir	21		1,886				25		1,325	457	79	
Maple	17		340						61	203	76	
Red cedar	12		218							154	64	
Hemlock	12		202						32	129	41	
Red alder	15		197						80	57	60	
Cottonwood	26		58					50	4		4	
Birch	13		13								13	
Sale Total			2,914									

MINIMUM BID: \$934,000.00 **BID METHOD:** Sealed Bids

PERFORMANCE SECURITY: \$100,000.00 **SALE TYPE:** Lump Sum

EXPIRATION DATE: September 30, 2007 **ALLOCATION:** Export Restricted

BID DEPOSIT: \$93,400.00 or Bid Bond. Said deposit shall constitute an opening bid at the appraised price.

HARVEST METHOD: Cable and Shovel. Cable; cable or shovel on slopes 25% or less within 400 feet of roads. Yarding will not be permitted from November 1 to March 31 unless authorized in writing by the Contract Administrator by ground-based equipment to reduce soil damage and erosion.

ROADS: 76.34 stations of required construction. 32.95 stations of required reconstruction. 13.38 stations of optional construction.

13+38 stations of road to be abandoned if built.

Development of an existing hardrock source (E-3100 Pit) at station 3+00 of the E-3100 road will involve clearing, stripping, drilling, shooting, and processing rock to generate approximately 105 cubic yards of rip rap and approximately 6,595 cubic yards of subgrade ballast rock. This rock is available at no cost on State land in Section 36, Township 37 North, Range 5 East, W.M. Development of an existing gravel source at milepost 0.4 of the S-1100 road will involve processing rock to generate 3,080 cubic yards of gravel surfacing. This rock is available at no cost on State land in Section 1, Township 39 North, Range 5 East, W.M.

Road construction, road reconstruction, road abandonment, and the hauling of rock will not be permitted from November 1 to March 31 unless authorized in writing by the Contract Administrator to reduce soil damage and siltation. The hauling of forest products will not be permitted from November 1 to March 31 unless authorized in writing by the Contract Administrator to reduce soil damage and siltation.

ACREAGE DETERMINATION

CRUISE METHOD: Unit acres determined by GPS traverse. 72 acres gross. 6 acres deducted for green tree retention clumps. 66 acres net. Cruised using variable plot method. Expansion factor used is 54.45 for all units except Unit #4, which used an expansion factor of 40.00. Sighting height is 4.5 feet. Grid size plot spacing is 280 X 200 feet in Units #1-4, and 400 feet for the right-of-way. Plot ratio cruise count is 1:1 in Units #1-4 and ALL for the right-of-



TIMBER NOTICE OF SALE

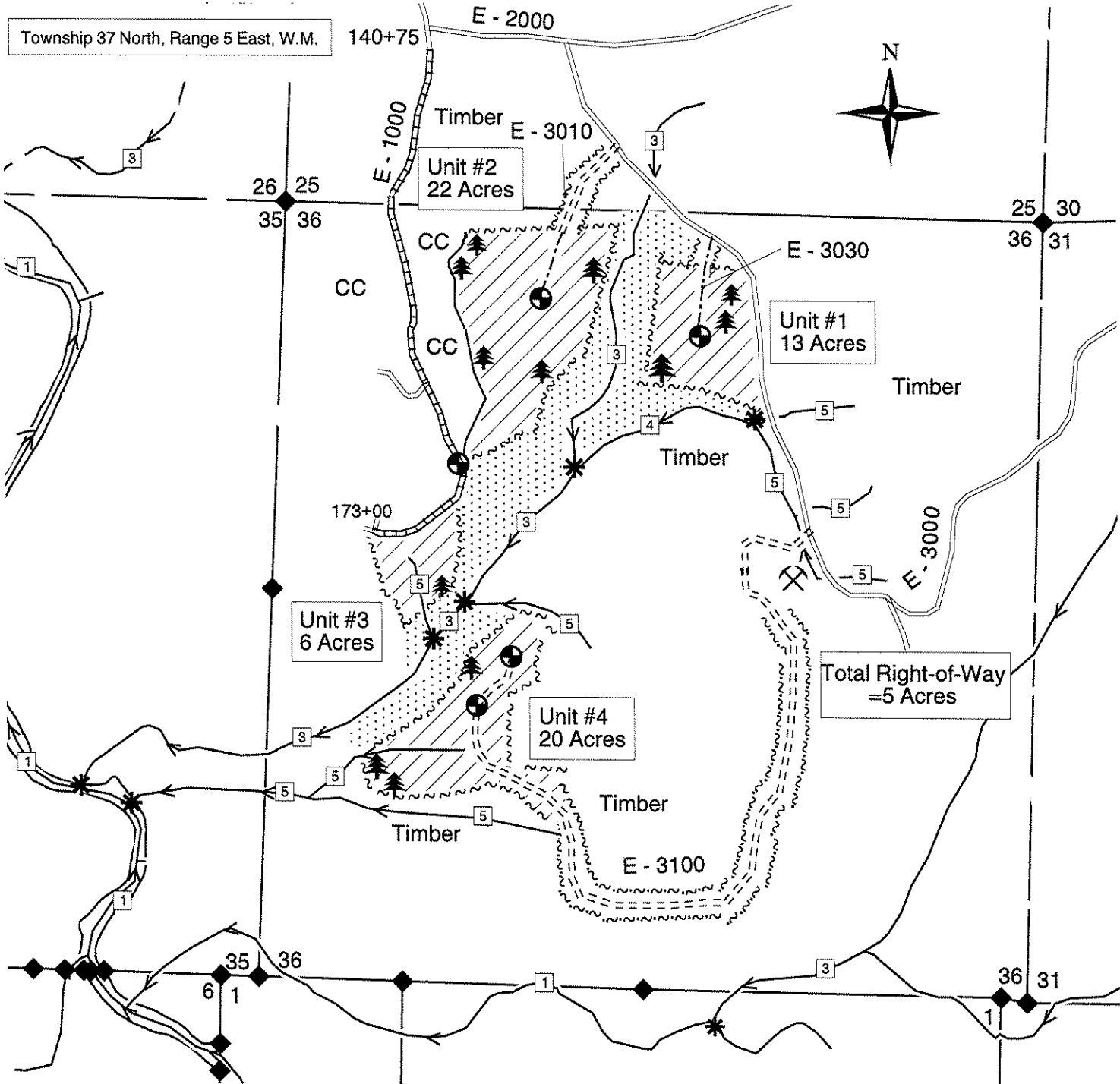
way. 10 plots were taken in Unit #1, 18 plots taken in Unit #2, 5 plots taken in Unit #3, 15 plots taken in Unit #4, and 4 plots taken in the right-of-way, for a total of 52 plots.

- FEES:** \$38,610.50 is due on day of sale. \$9.00 per MBF is due upon removal. These are in addition to the bid price.
- SPECIAL REMARKS:** Operation of the S-1100 pit between December 1 and February 15 may occur only during daylight hours from one hour after sunrise to one hour before sunset due to conditions of the Hatchery/Bear Creek Roost Bald Eagle Management Plan. Shovel yarding is not permitted between November 1 and June 1 in Unit #1. This clause may not be waived by the contract administrator. In Unit #4 no yarding corridors will be allowed within 30 feet of a type 5 stream that would be parallel to the stream.

TIMBER SALE MAP

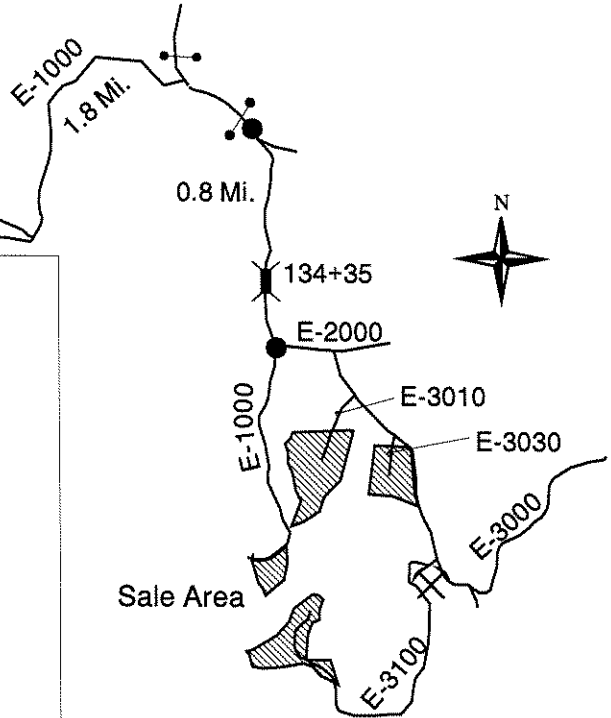
SALE NAME: Santa Maria
AGREEMENT NO: 77133
TRUST(S): Common School Indemnity (03)

REGION: Northwest
COUNTY(S): Whatcom
ELEVATION: 1000' - 2000'



Vicinity Map

-Not to Scale-
Saxon Road
To SR 9



Legend

Roads

- Existing Road
- Required Construction
- Required Reconstruction
- Optional Construction

Units

- Sale Boundary Tags
- R/W Boundary Tags
- Logged Area Boundary
- Sale Area
- RMZ

Streams

- Type 1-5

Symbols

- Rock Pit
- Tagged Leave Tree Area
- Bridge
- Water Type
- Survey Corner
- Landing
- Water Type Break
- Gate

Drawn By: Mike Finlay
Date: July 7, 2005
Scale: 1" = 1000'
Version: 1.3

TIMBER NOTICE OF SALE

SALE NAME: ALDER OVERLOOK

AGREEMENT NO: 30-077219

AUCTION: December 13, 2005 starting at 10:00 a.m., **COUNTY:** Thurston
South Puget Sound Region Office, Enumclaw, WA

SALE LOCATION: Sale located approximately 6 miles southwest of Elbe.

PRODUCTS SOLD AND SALE AREA: All timber bounded by white timber sale boundary tags and logged areas, except those trees defined to be left as described in Schedule J; all timber bounded by orange right of way tags on part(s) of Sections 24 all in Township 15 North, Range 4 East, W.M., containing 52 acres, more or less.

ESTIMATED SALE VOLUMES AND QUALITY:

Species	Avg DBH	Ring Count	Total MBF	MBF by Grade								UT
				1P	2P	3P	SM	1S	2S	3S	4S	
Red alder	13.4		793						62	204	527	
Hemlock	9.5		113						1	61	51	
Douglas fir	9.9		58						11	24	23	
Maple	15.6		24						6	7	11	
Silver fir	26.5		2						2			
Sale Total			990									

MINIMUM BID: \$148,000.00 **BID METHOD:** Sealed Bids

PERFORMANCE SECURITY: \$29,600.00 **SALE TYPE:** Lump Sum

EXPIRATION DATE: October 31, 2006 **ALLOCATION:** Export Restricted

BID DEPOSIT: \$14,800.00 or Bid Bond. Said deposit shall constitute an opening bid at the appraised price.

HARVEST METHOD: Ground based and cable. Ground based equipment on slopes less than 40 percent and cable on slopes greater than 40 percent. If Purchaser elects to shovel log, shovel logging shall be in accordance with the Shovel Logging Specifications as identified in Schedule A, which is part of this contract. Falling and Yarding will not be permitted from November 1 to May 31 unless authorized in writing by the Contract Administrator, nor at all on weekdays from 5 pm to 7 am, weekends or state recognized holidays.

ROADS: 18.82 stations of required construction. 21.10 stations of optional construction. 146.31 stations of required pre-haul maintenance. Purchaser maintenance on DNR roads used. The Purchaser is responsible to Lewis County for road maintenance on the Pleasant Valley Road. Road construction will not be permitted from November 1 to May 31 unless authorized in writing by the Contract Administrator, nor will it be permitted on weekends or state recognized holidays. The hauling of forest products will not be permitted from November 1 to May 31 unless authorized in writing by the Contract Administrator, nor at all weekdays from 5 pm to 7 am, weekends or state recognized holidays.

ACREAGE DETERMINATION

CRUISE METHOD: Acreage was determined by traversing unit boundary with GPS. Unit was cruised using a variable plot sampling with a BAF of 33.61 on a 250 x 165 foot grid. Right of way was 100 percent cruised.

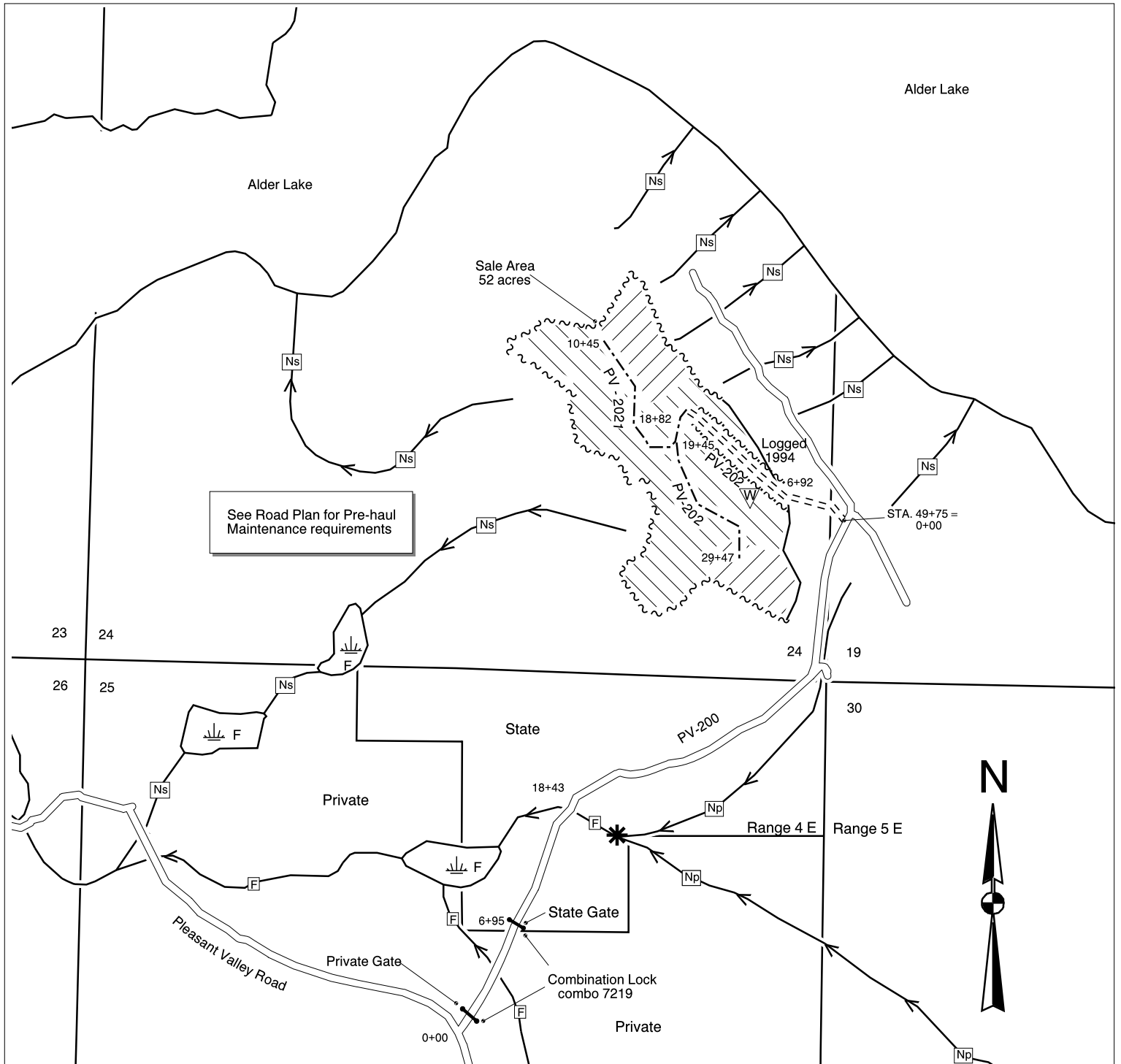
FEES: \$13,120.00 is due on day of sale. \$9.00 per MBF is due upon removal. These are in addition to the bid price.

SPECIAL REMARKS: There are locked gates on the PV-100 and PV-200 Roads, see timber sale map for combination. Gates shall be closed and locked when no operation is in progress.

SALE NAME:	ALDER OVERLOOK
AGREEMENT NO:	30-077219
TRUST(S):	FOREST BOARD TRANSFER

REGION: SOUTH PUGET SOUND
COUNTY(S): THURSTON

TOWNSHIP 15 NORTH, RANGE 04 & 05 EAST W.M.

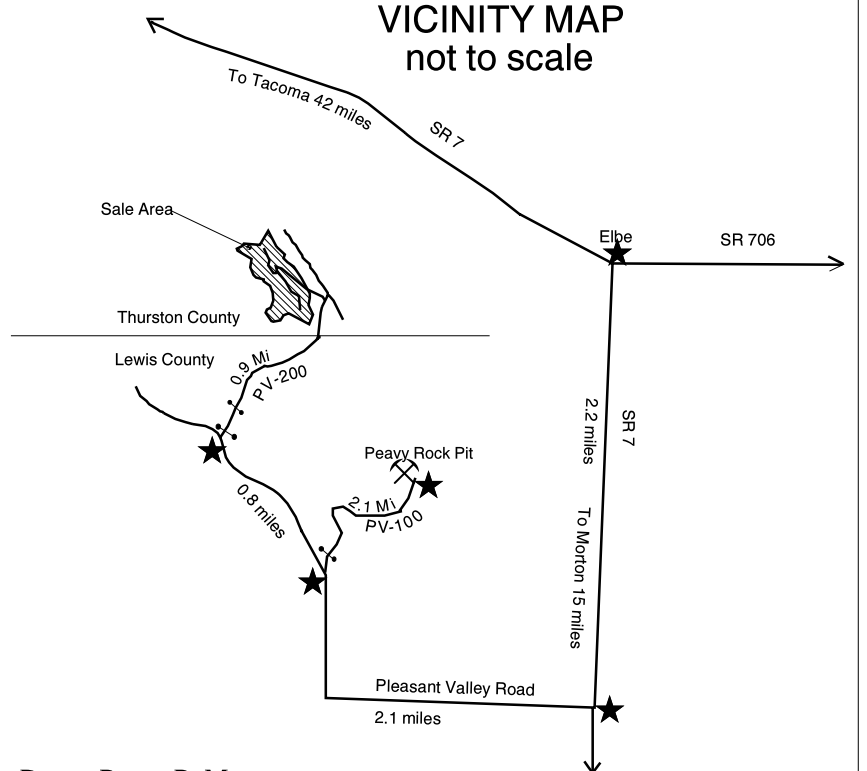


ELEVATION RANGE: 1,700 to 2,000 feet

LEGEND

- | | |
|--|---------------------------------|
| | Cable |
| | Ground Based |
| | White Timber Sale Boundary Tags |
| | Orange R/W Boundary Tags |
| | Existing Road |
| | Required Construction |
| | Optional Construction |
| | Wetlands |
| | Water Type |
| | Stream |
| | Water Type Break |
| | Rock Pit |
| | Waste Area |

VICINITY MAP
not to scale



Drawn By: B. Meyer
Date: April 4, 2005