

## Washington State Department of Natural Resources (DNR)

### Bidder's/Purchaser's Inspection of Sale Area and Forest Products

Acreage estimates and volume estimates contained within each timber notice of sale and each timber sale contract are made only for administrative and identification purposes. Except as expressly provided by the timber sale contract, the purchaser shall be responsible for paying the entire purchase price, even if the actual acreage or timber volume varies from the estimated quantity or volume shown.

All prospective bidders have the opportunity and are expected to inspect the sale area and the forest products located thereon. Bidders shall not rely on any representations by the State including, but not limited to, acreage estimates, volume estimates, appraisal or pre-bid documentation. The successful bidder/purchaser will further warrant that they have entered the timber sale contract without any reliance upon the DNR's volume estimates, acreage estimates, appraisals, pre-bid documentation, or any other representation by the DNR.

*Any timber sale contract arising out of these public auctions will require the successful purchaser to warrant that they are entering the timber sale contract based solely upon their own judgment of the value of the forest products, formed after their own examination and inspection of both the timber sale area and the forest products being sold.*

---

### Exclusion and Disclaimer of Warranties

The PARTIES AGREE that the IMPLIED WARRANTIES OF MERCHANTABILITY AND FITNESS FOR A PARTICULAR PURPOSE, and ALL OTHER WARRANTIES EXPRESS OR IMPLIED, ARE EXCLUDED from this transaction, and shall not apply to the goods sold. For example, THE FOLLOWING SPECIFIC MATTERS ARE NOT WARRANTED, and are EXCLUDED from this transaction:

- a. ***The merchantability of the forest products.*** The use of the term “merchantable” in any document is not intended to vary the foregoing.
- b. ***The condition of the forest products.*** All forest products will be conveyed “AS IS.”
- c. ***The acreage contained within any sale area.*** Any acreage descriptions appearing in the timber notices of sale, timber sale contract, timber sale map or other documents are estimates only, provided solely for administrative and identification purposes.
- d. ***The volume, quality, or grade of the forest products.*** The descriptions of the forest products to be conveyed are estimates only, made solely for administrative and identification purposes.
- e. ***The correctness of any soil or surface conditions, presale construction appraisals, investigations, and all other pre-bid documents prepared by or for the State.*** These documents have been prepared for the State’s appraisal purposes only.
- f. ***That the sale area is free from threatened or endangered species, or their habitat.*** The State is not responsible for any interferences with forestry operations that result from the presence of any threatened or endangered species, or the presence of their habitat, within the sale area.
- g. ***That the forestry operations to be performed under this contract will be free from regulatory actions by governmental agencies.*** The State is not responsible for actions to enforce regulatory laws, such as the Washington Forest Practices Act (Chapter 76.09 RCW), taken by the Department of Natural Resources or any other agency that may affect the operability of these timber sales.
- h. Items contained in any other documents prepared for or by the State.

Please also see timber sale contract clause G-060 for further information.

# BIDDING PROCEDURES FOR TIMBER AUCTIONS

---

*The general requirements that follow are a part of all Timber Notices of Sale to be auctioned by the Department of Natural Resources (DNR).*

---

## General Information

*The State reserves the right to waive minor irregularities and the right to reject any or all bids.*

A. This book contains the timber notices of sale and maps for each timber sale scheduled to be auctioned. More specific information can be obtained by contacting the appropriate region office at the number listed on the back cover of this book.

B. The timber notice of sale is a summary of sale information. For more specific information, interested parties are encouraged to view the Appraisal Packets on the DNR Internet Site @ [www.dnr.wa.gov](http://www.dnr.wa.gov), this will take you directly to the Product Sales Section. The Appraisal Packets contain **DRAFT** copies of the timber notice of sale, map, contract, road plan, cruise data, precruise and cruise narrative, Forest Practices Application (FPA), Hydraulics Project Approval (HPA).

C. The sale preview packets may be obtained at no charge for individual sales by visiting the appropriate region office.

D. Timber sale contracts contain extensive terms and conditions that will be binding upon successful high bidders. Each bidder should carefully review all terms contained in the appropriate **DRAFT** timber sale contract prior to bidding on a sale, and should review the final contract prior to signing. **DRAFT** timber sale contracts are contained in the preview and presales packets and are available upon request at the respective region office.

E. Sales advertised in this book have not been approved by the Board of Natural Resources and are subject to the Board's approval before they will be sold. The Board meets and approves sales approximately six weeks prior to auction. All sales are subject to confirmation by the DNR under RCW 79.15.120.

F. The State does not guarantee the accuracy of any information contained herein pertaining to particular sales. Therefore, all prospective purchasers are expected to make their own independent inspections and appraisals prior to bidding.

G. If any conflict exists between the information in the Timber Notice of Sale, timber sale map, sale preview packets and that in the timber sale contract, the signed contract will prevail.

H. Timber sales are subject to the Washington State Forest Excise Tax (RCW Chapter 84.33).

I. Within 30 days of sale confirmation, the apparent high bidder will provide to the State the Performance Security specified on each Notice of Sale.

J. Each DNR region office has information about sales offered in that region. For further information, contact the respective DNR region office. Region office addresses and telephone numbers appear on the back cover of this booklet.

K. The purchaser assumes the responsibility for any costs associated with extra maintenance or repair levied by a county for any county road used by the purchaser.

## BIDDING PROCEDURES FOR TIMBER AUCTIONS (Continued)

### Bidding Process

- A. All timber will be auctioned using the sealed bid method.
- B. Bids submitted on day of auction must be in the bid box at the specified auction location before 10:00 a.m. The respective DNR region office must receive mailed bids by 4:30 p.m., on the last business day before the auction. Bidders assume all risk for the method of delivery.
- C. The DNR has the right to reject bid forms that are completed incorrectly. *All bid forms must have an original signature on behalf of the person or entity submitting the bid, and must be on the form provided in this booklet or a photocopy thereof. Revised documents are not permissible.* Bidding instructions are on the back of the Sealed Bid Form. A bid deposit must be included in the sealed bid envelope unless using a Timber Sale Statewide Bid Bond.
- D. All bids must include the completed Sealed Bid Form and bid deposit.
- E. Bids will be opened in each respective region in the order in which sales appear in the Public Auction Sale of Timber book (alphabetically by county and by agreement number).
- F. If a tie bid occurs, the names of the tie bidders will be placed in a hat and the successful bidder will be determined by a drawing.
- G. The apparent high bidder on a particular sale will have the option of withdrawing additional sealed bids submitted for any remaining sales to be auctioned. The apparent high bidder must exercise this option within two minutes after the apparent high bidder is announced.

---

### Auction Time and Location

Auctions will start at 10:00 a.m. and close at 4:00 p.m. on the date and at the location specified in each Timber Notice of Sale.

---

### Bid Deposits

- A. Required bid deposits are listed on each Timber Notice of Sale.
- B. Bid deposits must be in the form of cash, certified check, cashiers' check, money order or bid bond.
- C. Bid bonds may be either a Timber Sale Statewide Bid Bond or a Timber Sale Per Sale Bid Bond.
- D. All bid deposits shall be submitted by the person or entity submitting the bid and made payable to the Department of Natural Resources. **Third party deposits will not be accepted.**

---

### Timber Sale Per Sale Bid Bonds

- A. The Per Sale Bid Bond shall guarantee payment of the bid deposit **within ten days of auction.**
- B. The balance between the bid bond and the Initial Deposit payment is due by 4:30 p.m., **on the day of auction.**
- C. Additional forms and instructions for a Per sale Bid Bond are available at any DNR region office.

## Timber Sale Statewide Bid Bond

- A. Statewide Bid Bonds shall guarantee payment of the Initial Deposit on any statewide timber sale while the bond is in effect.
- B. The Statewide Bid Bond must be received by the Department of Natural Resources, Product Sales & Leasing Division, PO BOX 47016, Olympia, Washington, 98504-7016, ten days in advance of the auction date. The bond shall be in the amount of \$150,000.00.
- C. The bidder must supply a list of persons authorized to bid using the bond. Bid bonds are subject to approval by the Department of Natural Resources.
- D. Successful bidders using a Statewide Bid Bond must pay the total Initial Deposit payment (10 percent of the total bid price) **by 4:30 p.m. on the day of auction.**
- E. A Statewide Bid Bond cannot be used to secure the Initial Deposit payment due the day of auction.
- F. Additional forms and instructions for a statewide bid bond are available at any DNR region office.

---

## Payments

The initial deposit for a sale is 10% of the total bid value as submitted by the apparent high bidder (25% if the bidder is a defaulter as defined under WAC 332-140-300) and never less than \$5,000.00 for lump sum sales. For Lump Sum sales appraised at less than \$5,000.00, the entire bid value is due on day of auction.

- a. Apparent high bidders using cash, certified check, cashiers' check or money order as a bid deposit must pay the total Initial Deposit amount by 4:30 p.m. on auction day.
- b. Apparent high bidders using a Timber Sale Per Sale Bid Bond as a bid deposit must pay the difference between the bid deposit and the total initial deposit by 4:30 p.m., on the day of auction. The bid bond amount must be replaced with a certified check, cashier's check, bank draft, cash, money order, or wire transfer within ten days of the auction.
- c. Apparent high bidders using a Timber Sale Statewide Bid Bond must pay the entire Initial Deposit amount by 4:30 p.m. on the day of auction.

---

## Fees due on the day of sale must be paid by 4:30 p.m.

All payments must be in the form of a certified check, cashier's check, bank draft, cash, money order or wire transfer.

---

## Eligibility to Bid

In order to bid on State timber sales you must be:

- 18 years of age (or have a co-signer who meets the eligibility requirements),
- Licensed to do business in the State of Washington,
- Eligible to bid on Export Restricted timber, and
- Capable of meeting all contract obligations.

## Authorized Representatives

Companies may only use authorized representatives or company officers to bid on State sales, sign State documents or sign checks. A list of authorized representatives and their specific authorities must be submitted in writing to the Department of Natural Resources Product Sales & Leasing Division, PO BOX 47016, Olympia, Washington, 98504-7016, ten days in advance of the auction. A company owner or officer must sign this submittal.

State of Washington  
Department of Natural Resources  
Doug Sutherland, Commissioner of Public Lands

SEALED BID FORM

Sale Name \_\_\_\_\_ Agreement Number \_\_\_\_\_

\_\_\_\_\_ hereby submits the following bid for timber.  
(Print full, legal company name)

\_\_\_\_\_  
(Street address, City, State, Zip Code)

\_\_\_\_\_  
(Phone Number)

**Lump Sum Bid** (Not Including Fees) \$\_\_\_\_\_ **For Total Sale**

**Weight Scale Sale Bid** (Not Including Fees) \$\_\_\_\_\_ / **Ton**

**Scribner Scale Sale Bid** (Not Including Fees) \$\_\_\_\_\_ / **MBF**

**BID DEPOSIT**

**Bid Deposit Amount:** \$\_\_\_\_\_

**Bid Deposit Type:**

- ☐ Cash, certified check, cashiers check, or money order  
☐ Per Sale Bid Bond  
☐ Statewide Bid Bond, Number \_\_\_\_\_

The Successful Bidder agrees to furnish, **within 30 days of confirmation date**, Performance Security acceptable to the State in the amount specified on the Notice of Sale. Performance Security must guarantee performance of all provisions of the contract and payment of any damages caused by operations under the contract or resulting from the successful bidders noncompliance with any rule or law.

**Bidder's Warranty and Bid Signature**

*By signing and submitting this bid as an offer to purchaser forest products from the State, the Bidder hereby warrants to the State that they have had an opportunity to fully inspect the sale area and the forest products being sold. Bidder further warrants to the State that they enter this bid based upon their own judgments of the value of the forest products, formed after their own examination and inspection of both the timber sale area and the forest products being sold. Bidder also warrants to the State that they enter this bid without any reliance upon the volume estimates, acreage, appraisals, pre-bid documentation, or any other representation by the Washington State Department of Natural Resources.*

\_\_\_\_\_  
(Signature of Authorized Representative submitting this bid)

Date \_\_\_\_\_

\_\_\_\_\_  
(Print **name and title** of Authorized Representative submitting this bid)

**Note: all sales are subject to confirmation by the Commissioner of Public Lands (Refer to RCW 79.15.120)**

# Instructions For Completing Sealed Bid Form

*All bids submitted for the purchase of forest products being sold by the Washington State Department of Natural Resources must have an original signature on behalf of the person or entity submitting the bid, and must be on the form provided in this booklet or a photocopy thereof. The DNR will not accept bids that are not signed, and will not accept bids that are not on the current, approved bid form. All appropriate blanks on bid form must be completed including the bid bond number if the bidder is relying upon a bid bond for bid deposit.*

*For more specific information, contact the appropriate region office.*

---

## In-Person Bids

- A. Sealed bids must be in auction box before 10:00 a.m. on the day of auction at the location specified in the Timber Notice of Sale.
- B. Sealed bids must be submitted in an envelope with the name of the sale, the bidder's name and the contract number clearly written on the outside of the envelope. The full legal name and business address of the bidder must be inserted where indicated on the form, and must be on the bid bond and timber sale contract. The bid form must be signed by an authorized representative. When a bidder has more than one person authorized to bid, documentation of those persons with signature authority for bidding must accompany the bid or be on file at the region office. Sealed bid envelopes are available at all region offices. One bid per envelope.
- C. Sealed bid envelopes **must** contain a completed bid form and a bid deposit.
- D. Sealed bid envelopes **may** contain a check for the Initial Deposit amount and a check for fees.

---

## Mailed Bids

- A. Bids that are mailed are required to have printed on the outside: "DO NOT OPEN UNTIL SALE DATE. SEALED BID ENCLOSED". The sealed bid envelope(s) will be enclosed inside the mailed-in envelope. Mailed bids must be submitted in an envelope with the name of the sale, the bidder's name and the agreement number clearly written on the outside of the envelope. The full legal name and business address of the bidder must be inserted where indicated on the form, and must be the same on the bid bond and timber sale contract. The Sealed Bid Form must be signed by an authorized representative. When a bidder has more than one person authorized to bid, then documentation of those persons with signature authority for bidding must accompany the bid or be on file at the region office. Mail-in envelopes are available at all region offices. One bid per mailed-in envelope.
- B. Bids that are mailed will be accepted up to 4:30 p.m. the last business day before the auction by the region office in which the sale is located. Bidders assume the risk for the method of delivery. The DNR assumes no responsibility for any delays caused by any delivery service.
- C. Sealed bid envelopes **must** contain a completed bid form and a bid deposit.
- D. Sealed bid envelopes **may** contain a check for the Initial Deposit amount and a check for fees.

---

## Initial Deposit:

**Lump Sum Sales** - Initial Deposit must equal 10% of the total bid submitted.  
(25% if the bidder is a defaulter as defined under WAC 332-140-300)

**Weight Scale Sales** - Initial Deposit must equal 10% of the bid per ton multiplied by the total sale estimated tonnage. (25% if the bidder is a defaulter as defined under WAC 332-140-300)

**Scribner MBF Scale Sales** - Initial Deposit must equal 10% of the bid per MBF multiplied by the total sale MBF. (25% if the bidder is a defaulter as defined under WAC 332-140-300)

State of Washington  
Department of Natural resources  
Doug Sutherland, Commissioner of Public Lands

STATEWIDE BID BOND

Bond Number \_\_\_\_\_

\_\_\_\_\_ of \_\_\_\_\_,  
(Principal's Name) (City, State)

hereinafter called PRINCIPAL, and \_\_\_\_\_ hereinafter called SURETY,

a corporation organized under the laws of the State of \_\_\_\_\_, and authorized to transact surety business in the State of Washington, as SURETY, are held and firmly bound jointly and severally to the State of Washington, Department of Natural Resources, hereinafter called the STATE, in the sum of \$150,000.00 Dollars, lawful money of the United States of America. The PRINCIPAL binds itself, its heirs, executors, administrators, successors, and assigns, and the SURETY binds itself, its successors, and assigns, all jointly and severally.

This bond shall be governed by the laws of the State of Washington. In the event of a lawsuit involving this bond, a venue shall be proper only in Thurston County Superior Court.

Signed, sealed and dated this \_\_\_\_\_ day of \_\_\_\_\_, \_\_\_\_\_.  
(month) (year)

This statewide bid bond may be used for bidding between the following dates:

Starting: \_\_\_\_\_

Ending: \_\_\_\_\_

**It Is Hereby Understood and Agreed:**

If PRINCIPAL is an apparent high bidder, PRINCIPAL shall before 4:30 p.m., on day of sale, pay to the STATE the amount of the initial deposit in the form of a certified check, cashier's check, bank draft, cash or money order, then this agreement shall be void for the sale on which the payment is made; otherwise, it will remain in force.

SURETY will make payment to the STATE within ten days after demand by the STATE if the PRINCIPAL shall fail to make timely payment as described above.

The SURETY may cancel this bond by sending a written notice to the STATE, not less than forty-five days before a cancellation date; liability shall terminate as to acts or omissions of the PRINCIPAL that occur after the cancellation date.

The PRINCIPAL and the SURETY executed this bond on the date first mentioned.

**Principal:** (Above named)

Signature: \_\_\_\_\_

Name: \_\_\_\_\_

Title: \_\_\_\_\_

Address: \_\_\_\_\_

City: \_\_\_\_\_  
State & Zip Code

**Surety:** (Above named)

Signature: \_\_\_\_\_

Name: \_\_\_\_\_

Title: \_\_\_\_\_

Address: \_\_\_\_\_

City: \_\_\_\_\_  
State & Zip Code

**Surety:** (Local Office of Authorized agent)

Signature: \_\_\_\_\_

Name: \_\_\_\_\_

Title: \_\_\_\_\_

Address: \_\_\_\_\_

City: \_\_\_\_\_  
Above  
State & Zip

Notary or Company Seal in Space

## Instructions For Completing Timber Sale Statewide Bid Bond

- A. This form is authorized for use as bid guaranty to qualify for bidding on Washington State Department of Natural Resources timber sales.
- B. The Statewide Bid Bond may be used as bid guaranty on more than one timber sale.
- C. The full legal name and business address of the PRINCIPAL must be inserted where indicated and must be the same as will appear on the bidding record and timber sale contract. The bond must be signed by an authorized person. Additionally, the name must be typed or printed below the signature and title must be shown.
- D. The full legal name and business address of the SURETY must be inserted where indicated. The bond must be signed by an authorized person. Additionally, the name must be typed or printed below the signature and the title must be shown.
- E. If the SURETY does not have a Washington State office or resident agent, but is authorized to transact surety business in the State of Washington as SURETY, it may leave this signature block blank.
- F. This form must be received by the Department of Natural Resources, Product Sales and Leasing Division, PO BOX 47016, Olympia, Washington, 98504-7016, ten days in advance of the auction.
- G. The PRINCIPAL must submit a list of authorized bidders with the Statewide Bid Bond Form.
- H. **The State reserves the right to reject *incomplete* or *incorrect* bid bond forms, making such forms unacceptable as bid guaranty.**



State of Washington  
Department of Natural Resources  
Doug Sutherland, Commissioner Of Public Lands

Timber Sale Per Sale Bid Bond

Bond Number\_\_\_\_\_

\_\_\_\_\_ of \_\_\_\_\_, hereinafter called PRINCIPAL, and \_\_\_\_\_, hereinafter called SURETY, a corporation organized under the laws of the State of \_\_\_\_\_ and authorized to transact surety business in the State of Washington, as SURETY, are held and firmly bound jointly and severally to the State of Washington, Department of Natural Resources, hereinafter called the STATE, in the sum of \$\_\_\_\_\_Dollars, lawful money of the United States of America. The PRINCIPAL binds itself, its heirs, executors, administrators, successors, and assigns, and the SURETY binds itself, its successors, and assigns, all jointly and severally.

This bond shall be governed by the laws of the State of Washington. In the event of a lawsuit involving this bond, venue shall be proper only in Thurston County Superior Court.

Signed, sealed, and dated this\_\_\_\_\_day of \_\_\_\_\_, 20\_\_\_\_\_.

BID IDENTIFICATION:

SALES NAME(S)	REQUIRED DEPOSIT	AGREEMENT NUMBER(S)

DATE OF BID: \_\_\_\_\_

It Is Hereby Understood and Agreed:

If PRINCIPAL is the high bidder on the sale(s) identified above and, within ten (10) days of the day of sale, transmits cash, certified check, cashier=s check, bank draft or money order, payable to the STATE, in the amount of the bid guaranty required by the terms of the Notice of Sale, *then* this obligation shall be void; *otherwise*, it shall remain in force.

SURETY will make payment to the STATE within ten (10) days after demand by the STATE whenever the PRINCIPAL shall fail to make timely payment as described above.

IN WITNESS WHEREOF: the PRINCIPAL and the SURETY have caused this bond to be executed on the date first mentioned.

SECOND OFFICER:

Signature: \_\_\_\_\_

Name: \_\_\_\_\_

Title: \_\_\_\_\_

PRINCIPAL: (Above Named)

Signature: \_\_\_\_\_

Name: \_\_\_\_\_

Title: \_\_\_\_\_

Address: \_\_\_\_\_

SURETY: (Local Office of Authorized Agent)

Signature:\_\_\_\_\_

Name: \_\_\_\_\_

Title: \_\_\_\_\_

Address: \_\_\_\_\_

City: \_\_\_\_\_

State & Zip: \_\_\_\_\_

City: \_\_\_\_\_

State & Zip:

SURETY: (Above Named)

Signature: \_\_\_\_\_

Name: \_\_\_\_\_

Title: \_\_\_\_\_

Address: \_\_\_\_\_

City: \_\_\_\_\_

State & Zip\_\_\_\_\_

NOTARY OR COMPANY SEAL IN THE SPACE ABOVE

## Instructions For Completing Timber Sale PerSale (s) Bid Bond

- A. This form is authorized for use as bid guaranty to qualify for bidding on Washington State Department of Natural Resources timber sales.
- B. The Timber Sale Per Sale Bid Bond may be used as bid guaranty on more than one timber sale auction held the same date at the same location.
- C. The full legal name and business address of the PRINCIPAL must be the same as will appear on the bidding record and timber sale contract. The bond must be signed by an authorized person, the name typed or printed, and title shown. If PRINCIPAL is a corporation, a second officer must sign in the space to the left of the signature of the officer executing for the PRINCIPAL.
- D. The full legal name and business address of the SURETY must be inserted where indicated. The bond must be signed by an authorized person. Additionally, the name must be typed or printed below the signature and the title must be shown. If this person is not an officer of the corporation, evidence of authority must be submitted.
- E. If the SURETY does not have a Washington State office or resident agent, but is authorized to transact surety business in the State of Washington as Surety, it may leave the local office signature block blank.
- F. The date of the bid bond must not be later than the auction date.
- G. **The State reserves the right to reject *incomplete or incorrect* bid bond forms, making such forms unacceptable as guaranty.**

STATE OF WASHINGTON  
DEPARTMENT OF NATURAL RESOURCES  
Doug Sutherland, Commissioner of Public Lands

LOG SORT SEALED BID FORM

Sale Name \_\_\_\_\_ Agreement Number \_\_\_\_\_ Date \_\_\_\_\_.

\_\_\_\_\_ hereby submits the following bid for delivered logs.  
(Print Company Name)

\_\_\_\_\_ Telephone Number \_\_\_\_\_  
(Print Name Authorized Company Representative) (Contact for bid result notification)

\_\_\_\_\_  
(Street Address)

\_\_\_\_\_  
(City, State and Zip)

Agreement Number	Sort Number	Delivered Logs Bid Amount (fill in one only)	
		\$ / MBF	\$ / ton

Bid Deposit Amount \$\_\_\_\_\_

Bid Deposit Type: ☐ Cash, Certified Check, Cashiers Check, or Money Order  
☐ Per Sale Bid Bond  
☐ Statewide Bid Bond, Number \_\_\_\_\_

The successful bidder agrees to furnish payment security acceptable to the State in the amount as described in clause P-041 of the Purchaser’s contract prior to log delivery and at a date to be determined by the State.

**Bidder’s Warranty and Bid Signature**

By signing and submitting this bid as offer to purchase forest products from the State, the Bidder hereby warrants to the State that they have had an opportunity to fully inspect the sale area and the forest products being sold. Bidder further warrants to the State that they enter this bid based solely upon their own judgment of the value of the forest products, formed after their own examination and inspection of both the timber sale area and the forest products being sold. Bidder also warrants to the State that they enter this bid without any reliance upon the volume estimates, acreage, estimates, appraisals, pre-bid documentation, or any other representation by the State Department of Natural Resources.

\_\_\_\_\_  
(Signature of Authorized Representative submitting this bid) (Date of Signature)

\_\_\_\_\_  
(Print name and title of Authorized Representative submitting this bid)

**NOTES:** A separate bid form is required for each log sort bid and must be delivered in a separate envelope. Photocopies of this bid form may be used. Each photocopy must have original signatures. All sales are subject to confirmation by the Commissioner of Public Lands as per RCW 79.15.100.

\_\_\_\_\_

SUPPLEMENTAL INFORMATION FORM

Sale Name \_\_\_\_\_

Agreement Number \_\_\_\_\_

Sort # \_\_\_\_\_

Provide the following information for log manufacturing specifications, delivery locations, weigh and scaling locations.

Log Manufacturing Specifications:

Enter one or more preferred log lengths for each log length range below.	Bidder's Preferred Log Lengths (Log lengths exclude trim)		
	1	2	3
12 ft. through 18 ft.			
20 ft. through 28 ft.			
30 ft. through 40 ft.			

Minimum log trim: \_\_\_\_\_ inches.

Additional Log or Pole Length Information:

To provide additional preferred cutting information you may attach a separate sheet or “Cutting card”.

Log Delivery Specifications:

Designate the point of delivery and address (must be a street address)

\_\_\_\_\_  
(Location Name)

\_\_\_\_\_  
(Street Address)

\_\_\_\_\_  
(City, State and Zip)

Weigh and Scaling Facilities:

Designate the state approved Weigh and Scaling facility closest to the point of delivery.

State approved Weighing and scaling facility address:

\_\_\_\_\_  
(Location Name)

\_\_\_\_\_  
(Street Address)

\_\_\_\_\_  
(City, State and Zip)

Final contract award is contingent upon the State’s haul cost analysis. Actual haul route may vary and is subject to change at the State’s discretion.

## **Instructions for Completing the Log Sort Sealed Bid and Supplemental Information Forms.**

All bids submitted for the purchase of forest products being sold by the Washington State Department of Natural Resources must have an original signature on behalf of the person or entity submitting the bid, and must be on the form(s) provided in this booklet or a photocopy thereof. The DNR will not accept bids that are not signed, and will not accept bids that are not on the current, approved bid form. All appropriate blanks including Agreement Number, Sort Number, Bid amount (per mbf or ton as appropriate for the sort), Bid deposit amount and type. Signatures and date on bid form must be completed including the bid bond number if bidder is relying upon a bid bond for bid deposit.

Bids may not be accepted if the Supplemental Information Form is not included with the approved Log Sort Sealed Bid form or is incomplete.

For more specific information, contact the appropriate region office.

### **In-Person Bids**

- A. Sealed bids must be in auction box or auction envelope before 10:00 a.m. on the day of sale at the location specified in the notice of sale.
- B. Sealed bids must be submitted in an envelope with the name of the sale, the bidder's name and the contract agreement number clearly written on the outside of the envelope. The full legal name and business address of the bidder must be inserted where indicated on the form, and must be the same as the name on the bid bond and timber sale contract. The bid form must be signed by an authorized person. When a bidder has more than one person authorized to bid, then documentation of those persons with signature authority for bidding must accompany the bid or be on file at the region office. Sealed bid envelopes are available at all region offices. One bid per envelope, please.
- C. Sealed bid envelopes must contain the following:
  - 1. A completed Log Sort Sealed Bid form;
  - 2. A completed Supplemental Information form; and
  - 3. A bid deposit

### **Mailed Bids**

- A. Mail-in bid envelopes are required to have printed on the outside: "DO NOT OPEN UNTIL SALE DATE. SEALED BID ENCLOSED." The sealed bid envelope(s) will be enclosed inside the mailed-in envelope. Mailed bids must be submitted in an envelope with the name of the sale, the bidder's name and the agreement number clearly written on the outside of the envelope. The full legal name and business address of the bidder must be inserted where indicated on the form, and must be the same on the bid bond and timber sale contract. The bid form must be signed by an authorized person. When a bidder has more than one person authorized to bid, then documentation of those persons with signature authority for bidding must accompany the bid or be on file at the region office. Mail-in envelopes are available at all region offices. One bid per mailed-in envelope, please.
- B. Mail-in or otherwise delivered bids will be accepted up to 4:30 p.m. the last business day before the auction by the region office in which the sale is located. Bidders assume the risk for the method of delivery they chose. The DNR assumes no responsibility for any delays caused by any delivery service.
- C. Sealed bid envelopes must contain the following:
  - 1. A completed Log Sort Sealed Bid form;
  - 2. A completed Supplemental Information form; and
  - 3. A bid deposit



Summary Report of All Sales for the Month of August 2006

Board Sales

<u>County</u>	<u>Region</u>	<u>Agree #</u>	<u>Sale Name</u>	<u>Volume</u>	<u>Value</u>
Cowlitz	Pacific Cascade	78674	*CENTER DRIVE	7,396	\$2,872,000.00
Ferry	Northeast	78915	MARTIN FI SORTS	1,615	\$637,000.00
Jefferson	Olympic	76294	*KALALOCH E-HAB	2,833	\$346,000.00
Pacific	Pacific Cascade	78688	*DEER LICK	4,958	\$1,071,000.00
Pacific	Pacific Cascade	78778	*ST PAUL GRADE	6,805	\$2,149,000.00
Skagit	Northwest	78594	*LITTLE DIPPER	1,945	\$564,000.00
Skagit	Northwest	78596	*QUASIMODO	1,572	\$456,000.00
Skagit	Northwest	78668	*BRUIN BORDERS	2,856	\$873,000.00
Thurston	Pacific Cascade	78810	*BANNOCKBURN	4,943	\$1,601,000.00
Whatcom	Northwest	77868	*TOBASCO	1,339	\$501,000.00
Total				36,262	\$11,070,000.00

Region Sales

<u>County</u>	<u>Region</u>	<u>Agree #</u>	<u>Sale Name</u>	<u>Volume</u>	<u>Value</u>
Skagit	Northwest	78582	*BEAR POLE	136	\$60,000.00
Total				136	\$60,000.00

Sales marked with an asterisk (\*) are lands certified under the *Sustainable Forestry Initiative*® Program. [www.aboutsfi.com](http://www.aboutsfi.com)





TIMBER NOTICE OF SALE

**SALE NAME:** CENTER DRIVE

**AGREEMENT NO:** 30-078674

**AUCTION:** August 31, 2006 starting at 10:00 a.m., **COUNTY:** Cowlitz  
Pacific Cascade Region Office, Castle Rock, WA

**SALE LOCATION:** Sale located approximately 17 miles west of Longview, WA

**PRODUCTS SOLD AND SALE AREA:** All timber, except snags, pre-existing stumps, down timber existing two years prior to the day of sale, trees tagged out with leave tree area tags, and leave trees marked with blue paint, bounded by the following: timber sale boundary tags, special management zone boundary tags, the E-1170 road and property line, take trees include those trees tagged with special management unit boundary tags in Unit #1; timber sale boundary tags and property line in Unit #2; timber sale boundary tags, reprod and the E-4800 road in Unit #3; timber sale boundary tags, reprod, the E-4700, E-4700D and E-4710 roads in Unit #4; timber sale boundary tags, reprod and the E-4710 road in Unit #5 on part(s) of Sections 4 and 5 all in Township 9 North, Range 4 West, Sections 29, 32 and 33 all in Township 10 North, Range 4 West, W.M., containing 146 acres, more or less.

**ESTIMATED SALE VOLUMES AND QUALITY:**

Species	Avg DBH	Ring Count	Total MBF	MBF by Grade								UT
				1P	2P	3P	SM	1S	2S	3S	4S	
Douglas fir	21.6	8	6,528				23		4,379	1,924	202	
Hemlock	16	9	785						384	334	67	
Red alder	12.4		83							46	37	
Sale Total			7,396									

**MINIMUM BID:** \$2,872,000.00 **BID METHOD:** Sealed Bids

**PERFORMANCE SECURITY:** \$100,000.00 **SALE TYPE:** Lump Sum

**EXPIRATION DATE:** October 31, 2008 **ALLOCATION:** Export Restricted

**BID DEPOSIT:** \$287,200.00 or Bid Bond. Said deposit shall constitute an opening bid at the appraised price.

**HARVEST METHOD:** Cable harvesting equipment with ground based harvesting equipment (tracked skidder, shovel, forwarder) being restricted to slopes of 35% and less during dry soil conditions. Suspend the lead end of all logs with any harvest system used. Yarding may be suspended at the discretion of the Contract Administrator when soil rutting exceeds four inches as measured from the natural ground line. See Clause H-140 for further harvesting requirements.

**ROADS:** 4.22 stations of required reconstruction. 45.95 stations of optional construction. 33.60 stations of optional reconstruction. 6.4 miles of pre-haul maintenance. 79.55 stations of light road abandonment. 15.00 stations of optional heavy road abandonment. Rock is available at no charge from a State pit in Sec. 4, T09N, R04W, W.M. Purchaser shall construct and install a 50 foot bridge according to the structure specifications in the road plan. See the road plan for bridge installation specifications and optional bridge removal specifications. Road construction will not be permitted from September 30 to May 1 unless authorized in writing by the Contract Administrator.

**ACREAGE DETERMINATION**

**CRUISE METHOD:** The sale acres were determined by GPS. The sale area was cruised using a variable plot cruise method. Harvesting activities are estimated to be approximately 30% ground-based and 70% cable harvesting.

**FEES:** \$50,000.00 is due on day of sale. \$15.49 per MBF is due upon removal. These are in addition to the bid price.

**SPECIAL REMARKS:** The west boundary of Unit 1, along the property line where private landowner standing timber meets State standing timber, is tagged with Blue Special Management Unit Boundary tags. Trees that are tagged with the blue tags represent the last DNR tree on the property line that may be cut. Trees on the backside of the blue-tagged trees are on private property.

400 well-distributed, plantable spots per acre will be created on all areas where ground based logging occurs on slopes less than 35%. This shall include the uprooting of vine maple clumps and the felling or uprooting of all non-merchantable hardwoods 2 inches or



**TIMBER NOTICE OF SALE**

---

greater in diameter. See vicinity map for gate locations. Gate keys may be obtained from the region office.

TIMBER SALE MAP

SALE NAME: CENTER DRIVE

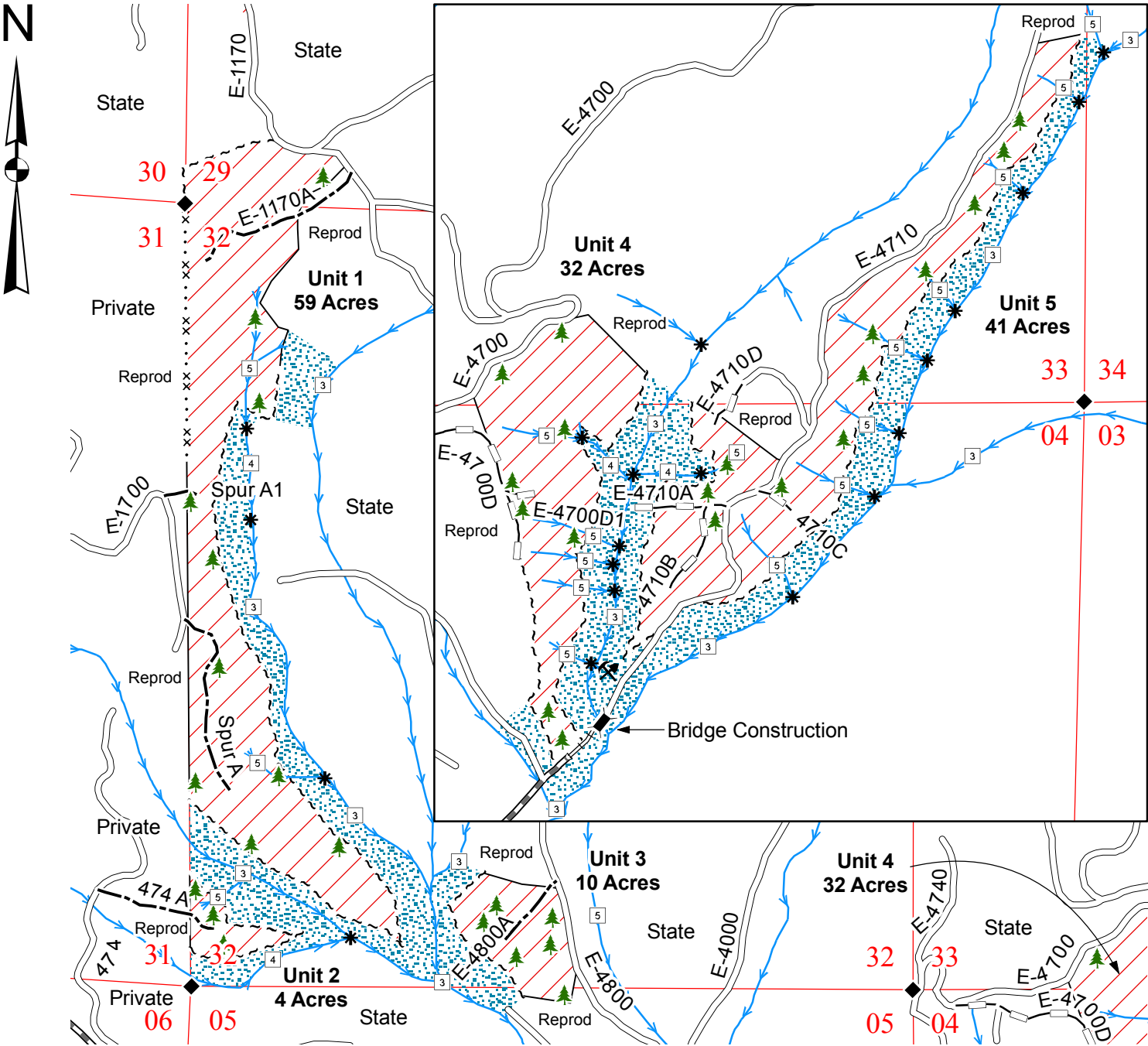
AGREEMENT NO: 30-078674

TRUST(S): Common School (03) & Scientific School (10)

REGION: Pacific Cascade

COUNTY(S): Cowlitz

Township 09 & 10 North, Range 04 West, W.M.



Legend

Sale Area

RMZ

Sale Boundary Tags (White)

Special Management Tags (Blue)

Existing Roads

Pre-haul Maintenance

Required Construction

Required Reconstruction

Optional Construction

Optional Reconstruction

Streams

Bridge

Water Type 1 - 5

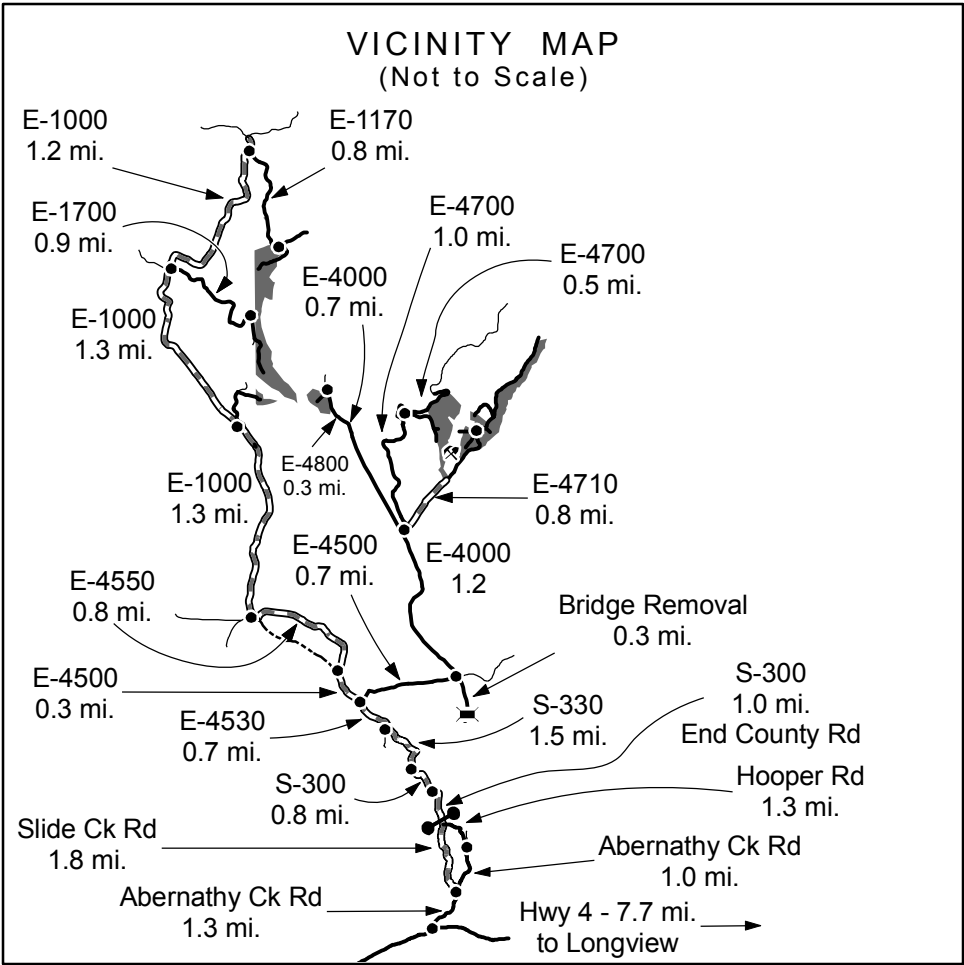
Monumented Corner

Leave Trees

Existing Rock Pit

Gate (786 Master)

Drawn By: Shawn B.  
Date: May 26, 2006  
Scale: 1" = 1000'  
Elevation: 800ft. - 2,000ft.





**TIMBER NOTICE OF SALE****SALE NAME:** *Martin FI Log Sorts*      **AGREEMENT NO:** *30-078916 - 30-078918, 30-079434***AUCTION:**                    *August 29*, starting at 10:00 a.m.,                    **COUNTY:** *Stevens*  
                                     *Northeast* Region Office, *Colville*, WA.**SALE LOCATION:**      Sale located approximately *21* miles north of *Kettle Falls, WA*.

**PRODUCTS SOLD AND SALE AREA:**      All products sold on a delivered log sort basis. Approximately 10,427 Tons will be removed from 6 units all bounded with pink ribbon and white timber sale boundary tags. Removal will be accomplished using a schedule "A" on all 6 units. Primary species is western red cedar, Douglas fir, Engelmann spruce, western larch, lodgepole pine, grand fir, western hemlock and sub alpine fir, meeting the specifications described below, all in Section 16, Township 39 North, Range 36 East, W.M., containing 334 acres, more or less.

**MINIMUM BID AND ESTIMATED LOG SORT VOLUMES:**

Agreement #	Sort #	Species and Sort Specifications	Estimated Volume		Minimum Bid Delivered Prices		Total Appraised Value	Bid Deposit
			mbf	Tons	\$/mbf	\$/Ton		
30-078916	1	RC 6"+dib Sawlogs	426	3,037	\$658.00	N/A	\$280,000.00	\$28,000.00
30-078917	2	DF, WL, ES, LP, GF, WH, AF 8"+dib Sawlogs	550	3,617	N/A	\$56.75	\$205,000.00	\$20,500.00
30-078918	3	DF, WL ES, LP, GF, WH, AF 4"-7"dib Small Saw	562	3,158	N/A	\$44.75	\$141,000.00	\$14,100.00
30-079434	4	DF,WL, ES, LP,GF,WH, AF 3"+dib Utility	77	615	N/A	\$17.90	\$11,000.00	\$1,100.00
<b>Totals</b>			<b>1,615</b>	<b>10,427</b>				

**BID METHOD:**                    Sealed Bids                    **UNIT OF MEASURE:**    MBF scale/Tonnage scale**EXPIRATION DATE:** *June 1, 2007*                    **ALLOCATION:**    Export Restricted

**PAYMENT SECURITY:**                    To be determined by the State as described in Clause P-041 of the Purchaser's Contract.

**BIDDING PROCEDURES:**                    A separate sealed bid and envelope must be submitted for each log sort. Prospective Purchasers may bid on any or all log sorts. On the day of sale the Purchaser must bring their bid deposit up to 10% of their total bid price. Complete bidding procedures and auction information may be obtained from the *Northeast* Region Office in *Colville*, WA. Phone number *(509) 684-7474*.

**HARVEST AND DELIVERY COSTS:**      Purchaser must pay the forest excise taxes associated with the log sorts delivered to them. The tax rate for this sale is 4.2%. Taxable Stumpage = Total Delivered Value – (Harvest Cost + Haul Cost ). Use the following rates for estimating taxable stumpage: Harvest Cost = *(\$36.53/ton)*. Haul Cost = (tons)(\$2.10 or \$3.10 poles) + tons(\$0.13x C miles) + tons(\$0.11 x A miles)).

**SPECIAL REMARKS:**      The successful Purchaser(s) will be required to purchase logs from the sale area upon delivery to their location specified in the bid submitted. Logs will be delivered to the Purchaser's delivery location by the State's contract harvester. Purchaser is responsible for weighing and scaling costs. All mbf and tonnage loads will be weighed and all mbf loads will be scaled at State approved scaling locations. The State reserves the right to determine where logs are authorized to be scaled and weighed.  
In Sort # 2 56% percent of the volume is in the DF and WL, 44% is in the white woods.

For more information regarding this log sort sale visit our web site:  
<http://www.dnr.wa.gov/htdocs/fr/sales/>. If you have questions call *Bob McKellar* at the

## TIMBER NOTICE OF SALE

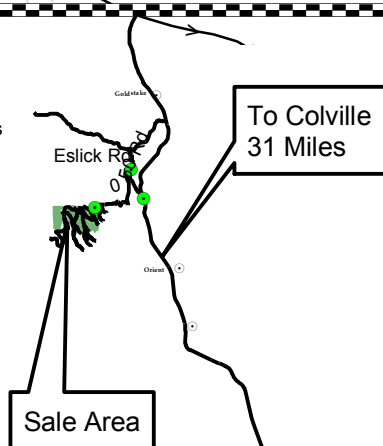
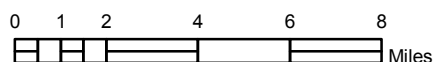
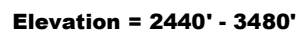
---

[Northeast](#) Region office at [\(509\) 684-7474](#) or [Dave Richards](#) at the Product Sales and Leasing Division Office in Olympia at [\(360\) 902-1365](#).

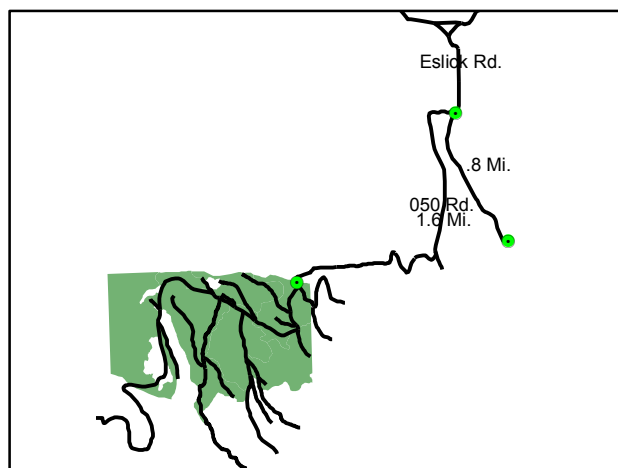
**CONFIRMATION:** Each sort is subject to confirmation following auction. No sorts will be confirmed until at least 10 days after all sorts are successfully auctioned.

SALE NAME: Martin Fl  
AGREEMENT NO.: 30-078915  
TRUST(S): School

REGION: NORTHEAST  
COUNTY: Ferry



## Vicinity Map



Scale: 1" = 1000'  
 Drawn By: S. M.  
 DATE: 05/30/2006





TIMBER NOTICE OF SALE

**SALE NAME:** KALALOCH E-HAB

**AGREEMENT NO:** 30-076294

**AUCTION:** August 22, 2006 starting at 10:00 a.m., **COUNTY:** Jefferson  
South Puget Sound Region Office, Enumclaw, WA

**SALE LOCATION:** Sale located approximately 40 miles south of Forks, WA

**PRODUCTS SOLD  
AND SALE AREA:** All timber bounded by timber sale boundary tags, clearcut boundary tags and blue paint in Units #2 and #4 as defined in Schedule B, except leave trees as defined in Schedule A; all timber bounded by timber sale boundary tags and clearcut boundary tags in Units #1 and #3; all State timber bounded by right of way boundary tags on part(s) of Sections 26, 27 and 35 all in Township 25 North, Range 13 West, W.M., containing 279 acres, more or less.

**ESTIMATED SALE VOLUMES AND QUALITY:**

Species	Avg DBH	Ring Count	Total MBF	Total Tons	Price \$/Ton	MBF by Grade								UT
						1P	2P	3P	SM	1S	2S	3S	4S	
Hemlock	11		2,125	18,740	\$9.26						43	1,657	425	
Douglas fir	14		708	6,135	\$28.12						14	552	142	
Sale Total			2,833	24,875										

**MINIMUM BID:** \$28.12/ton (est. value \$346,000.00) **BID METHOD:** Sealed Bids

**PERFORMANCE SECURITY:** \$69,200.00 **SALE TYPE:** Tonnage Scale

**EXPIRATION DATE:** November 15, 2008 **ALLOCATION:** Export Restricted

**BIDDABLE SPECIES:** Douglas fir

**BID DEPOSIT:** \$34,600.00 or Bid Bond. Said deposit shall constitute an opening bid at the appraised price.

**HARVEST METHOD:** Cable and processor/forwarder

**ROADS:** 9.31 stations of required construction. 3.67 stations of optional construction. 152.14 stations of optional reconstruction. 132 stations of optional pre-haul maintenance. Purchaser maintenance on the K-1100, K-1200 and all new construction and reconstruction. Designated maintenance on all other roads used. Rock haul, construction, reconstruction and pre-haul maintenance will be restricted from November 15 through April 15 in Units #1 and #2.

**ACREAGE DETERMINATION**

**CRUISE METHOD:** Units were 100% photo traversed.

**FEES:** On day of sale Purchaser must provide a cashier's check in the amount of \$1,000.00 made payable to Green Crow Corporation, for 6 mbf of right of way timber. \$37,617.00 is due on day of sale. \$1.02 per ton is due upon removal. These are in addition to the bid price.

**SPECIAL REMARKS:** None.



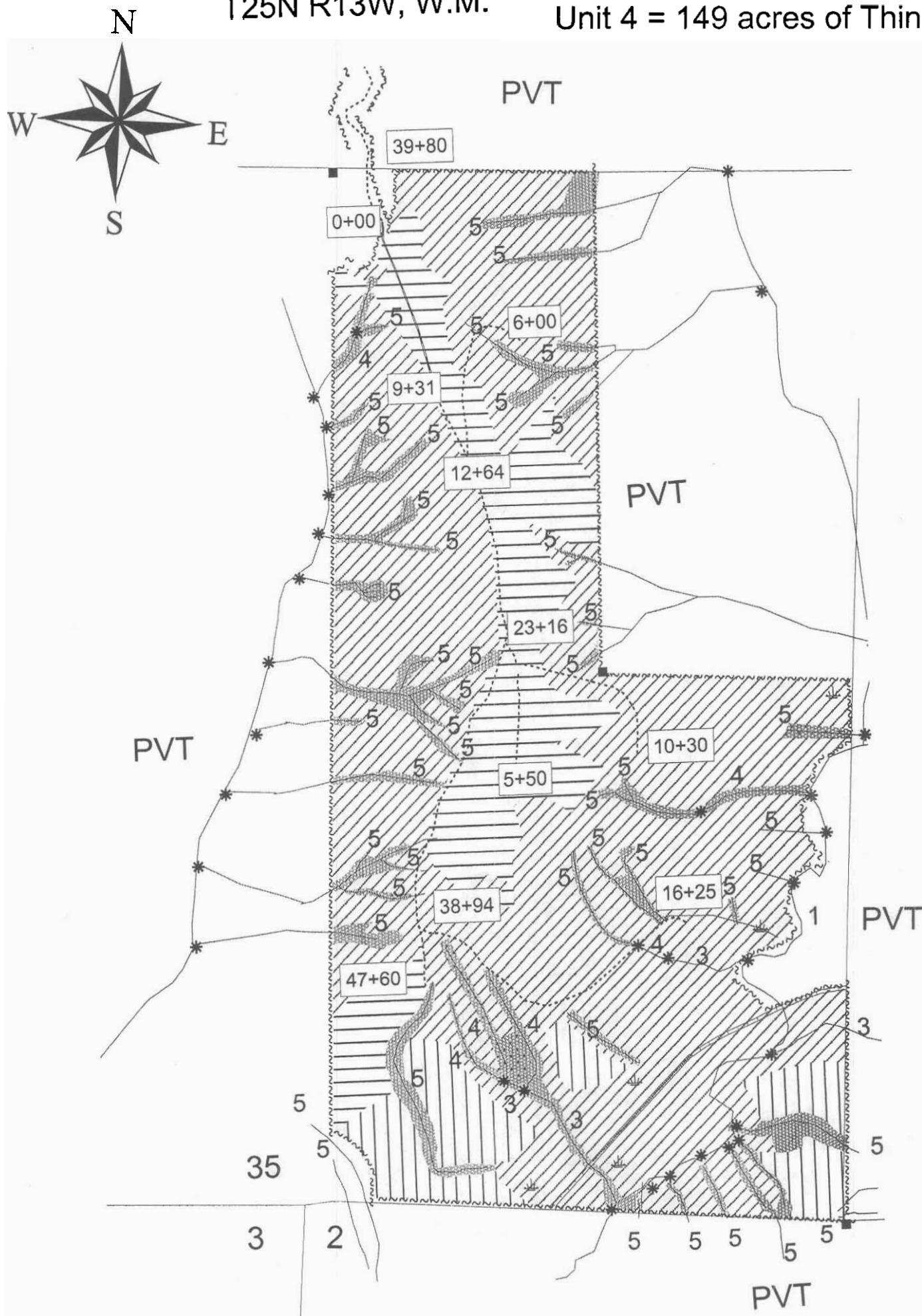
# TIMBER SALE MAP

SALE NAME: KALALOCH E-HAB  
AGREEMENT NO: 30-076294  
TRUST(S): Common School

REGION: Olympic  
COUNTY(S): Jefferson

T25N R13W, W.M.

Unit 3 = 54 acres of Clearcut  
Unit 4 = 149 acres of Thinning



Drawn By: B. Wells  
Date: May 30, 2006  
Scale: 1" = 600'  
500 0 500 Feet

Elevation: 0 – 500'

Map 1 of 4

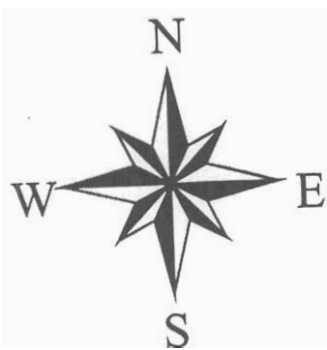
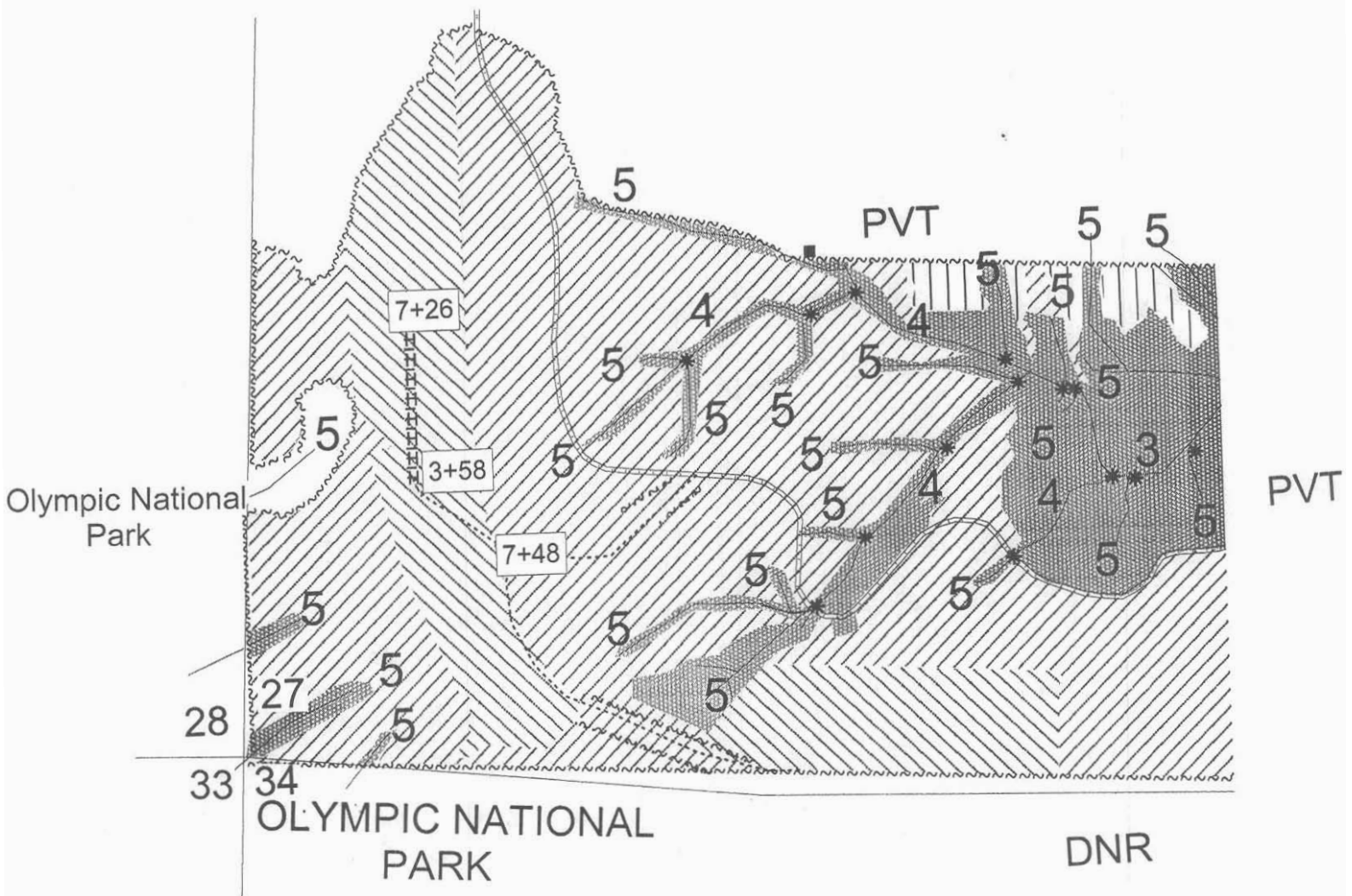
## TIMBER SALE MAP

SALE NAME: KALALOCH E-HAB  
AGREEMENT NO: 30-076294  
TRUST(S): Common School

REGION: Olympic  
COUNTY(S): Jefferson

T25N R13W, W.M.

Unit 1 = 2 acres of Clearcut  
Unit 2 = 71 acres of Thinning



Drawn By: B. Wells  
Date: May 30, 2006  
Scale: 1" = 400'  
500 0 500 Feet

Elevation 0 – 500'

Map 2 of 4

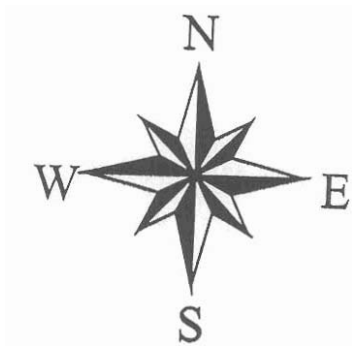
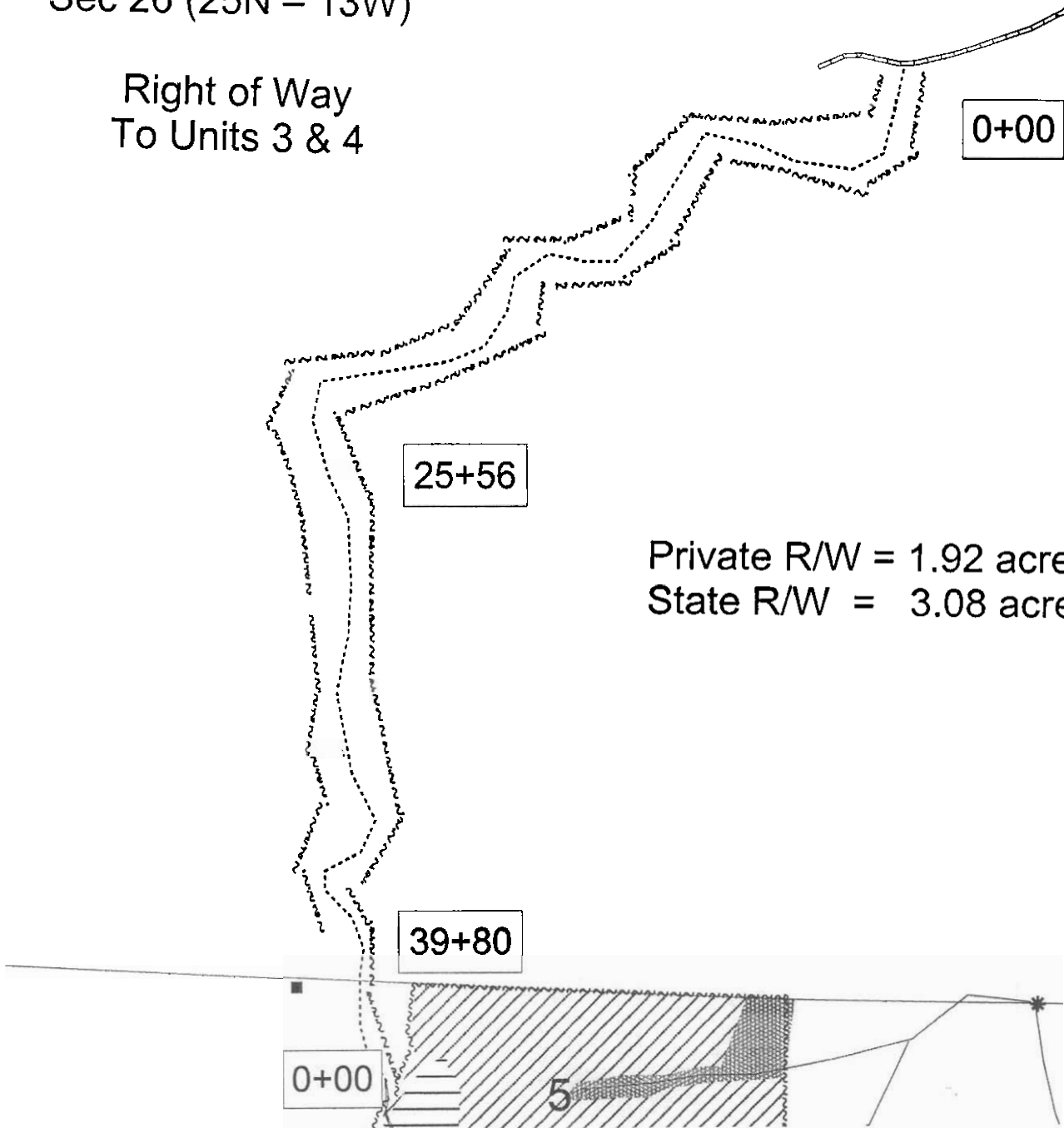
TIMBER SALE MAP

SALE NAME: KALALOCH E-HAB  
AGREEMENT NO: 30-076294  
TRUST(S): Common School

REGION: Olympic  
COUNTY(S): Jefferson

Sec 26 (25N – 13W)

Right of Way  
To Units 3 & 4



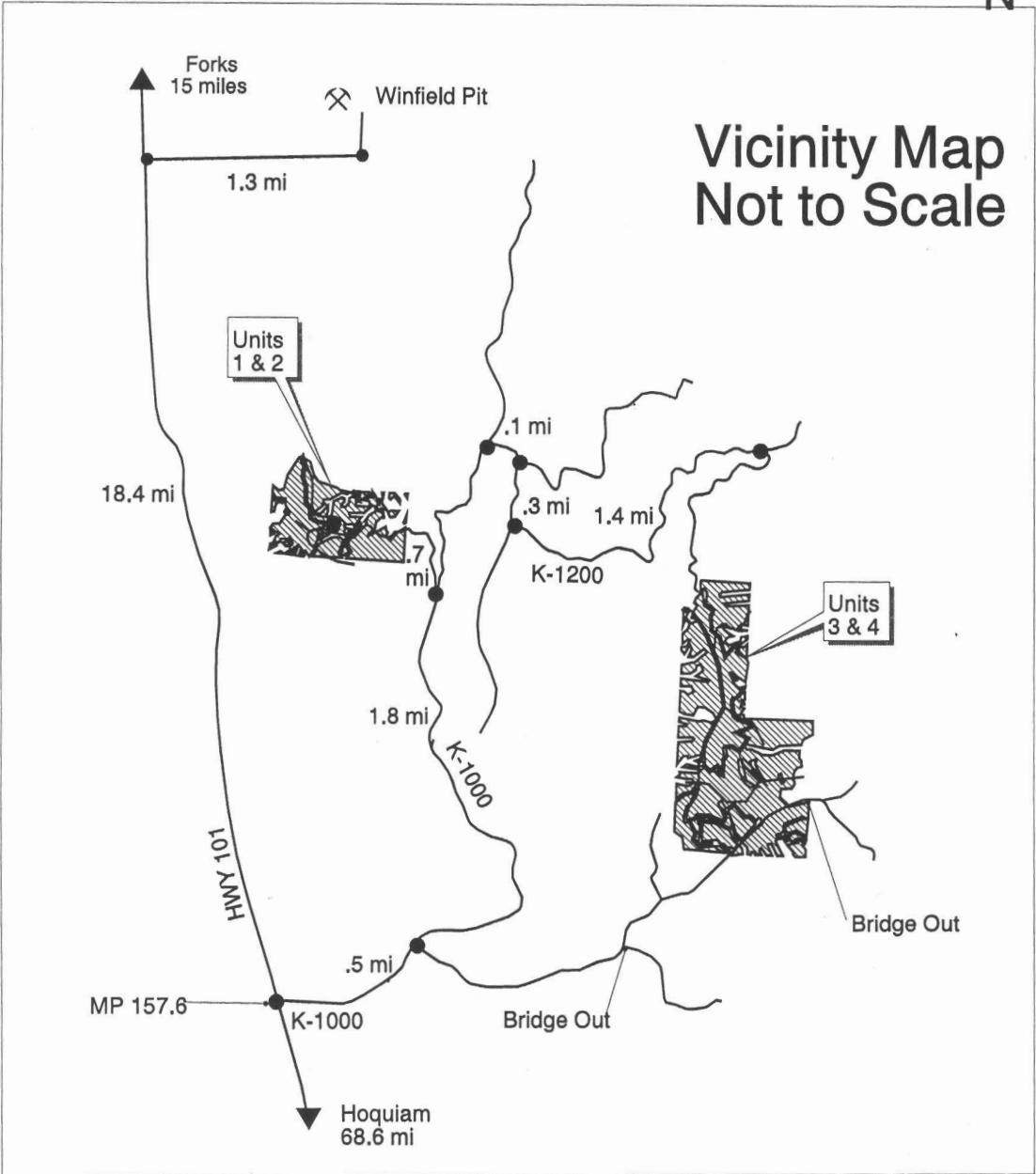
Drawn By: B. Wells  
Date: May 30, 2006  
Scale: 1" = 400'  
500 0 500 Feet

Elevation: 0 – 500'

TIMBER SALE MAP

SALE NAME: KALALOCH E-HAB  
AGREEMENT NO: 30-076294  
TRUST(S): Common School

REGION: Olympic  
COUNTY(S): Jefferson



Legend

~~~~~	Sale Boundary Tags	=====	Existing
~~~~~	R/W Boundary Tags	=====	Required Construction
////	Cable Thinning	-----	Optional Reconstruction
////	Ground Based Thinning	=====	Optional Construction
=====	Ground Based Clearcut (bounded by Clearcut Boundary Tags)	3	Stream Type
=====	Cable Clearcut (bounded by Clearcut Boundary Tags)	→	Streams
=====	Non Op Areas	*	Water Type Break
		■	Survey Monuments
		⌵	Pit
		⌵	Wetland

Drawn By: B. Wells/M. Helms  
Date: February 3, 2005

TIMBER NOTICE OF SALE

**SALE NAME:** *DEER LICK*

**AGREEMENT NO:** 30-078688

**AUCTION:** August 31, 2006 starting at 10:00 a.m., **COUNTY:** Pacific  
Pacific Cascade Region Office, Castle Rock, WA

**SALE LOCATION:** Sale located approximately 12 miles northeast of Naselle

**PRODUCTS SOLD AND SALE AREA:** All timber, except snags, pre-existing stumps, down timber existing three years prior to the day of sale, trees tagged out with leave tree area tags, and trees marked with blue paint, bounded by the following: timber sale boundary tags, the 5910, 5920, and 5930 roads in Unit #1; timber sale boundary tags, the 5970 and 5972.5 roads, in Unit #2; timber sale boundary tags and the 5970 road in Unit #3; timber sale boundary tags, property line and the 5975 road in Unit #4, all timber bounded by right-of-way boundary tags on part(s) of Sections 24, 25, 35 and 36 all in Township 11 North, Range 8 West, Sections 17, 18, 29 and 30 all in Township 11 North, Range 7 West, W.M., containing 117 acres, more or less.

**ESTIMATED SALE VOLUMES AND QUALITY:**

Species	Avg DBH	Ring Count	Total MBF	MBF by Grade								UT
				1P	2P	3P	SM	1S	2S	3S	4S	
Hemlock	15.5	8	3,127						1,599	1,282	246	
Douglas fir	20.1	6	1,233						784	375	74	
Red alder	13.9		550						127	197	226	
Red cedar	20.8		37							20	17	
Spruce	38	6	11							11		
Sale Total			4,958									

**MINIMUM BID:** \$1,071,000.00 **BID METHOD:** Sealed Bids

**PERFORMANCE SECURITY:** \$100,000.00 **SALE TYPE:** Lump Sum

**EXPIRATION DATE:** September 30, 2008 **ALLOCATION:** Export Restricted

**BID DEPOSIT:** \$107,100.00 or Bid Bond. Said deposit shall constitute an opening bid at the appraised price.

**HARVEST METHOD:** Cable and Shovel. Shovel logging will not be permitted on slopes over 35% unless authorized in writing by the Contract Administrator. Lead end suspension required on all cable settings. Intermediate support may be required to prevent soil rutting in Unit 4 off the 5975-G and 5975-G1 Roads. See Schedule L for further harvesting specifications. Shovel yarding will not be permitted from September 30 to May 1 unless authorized in writing by the Contract Administrator.

**ROADS:** 31.57 stations of required construction. 9.73 stations of required reconstruction. 27.98 stations of optional construction. 305.14 stations of pre-haul maintenance. 27.98 stations of road abandonment. Rock for construction under this contract may be obtained from any commercial source as approved in writing by the Contract Administrator. Purchaser assumes responsibility for any county road use permits and for all costs associated with permits and extra maintenance or repair levied by a county for any county road used by Purchaser. Road construction will not be permitted from September 30 to May 1 unless authorized in writing by the Contract Administrator.

**ACREAGE DETERMINATION**

**CRUISE METHOD:** Acreage was determined by hand compass, laser range finder with a maximum error of closure of 1:193, and the sale area was cruised by using a variable plot cruise method. Harvesting activities are estimated to be 75% ground based and 25% cable harvesting.

**FEES:** \$50,000.00 is due on day of sale. \$12.17 per MBF is due upon removal. These are in addition to the bid price.

**SPECIAL REMARKS:** If Purchaser chooses to tailhold on private property, Purchaser shall obtain permit(s) and assumes responsibility for all costs associated with permit(s). Purchaser must provide the State with a copy of the executed permit(s) or a letter from the private entity indicated that a satisfactory tailhold permit(s) has been consummated between Purchaser and private entity.





TIMBER SALE MAP

SALE NAME: DEER LICK

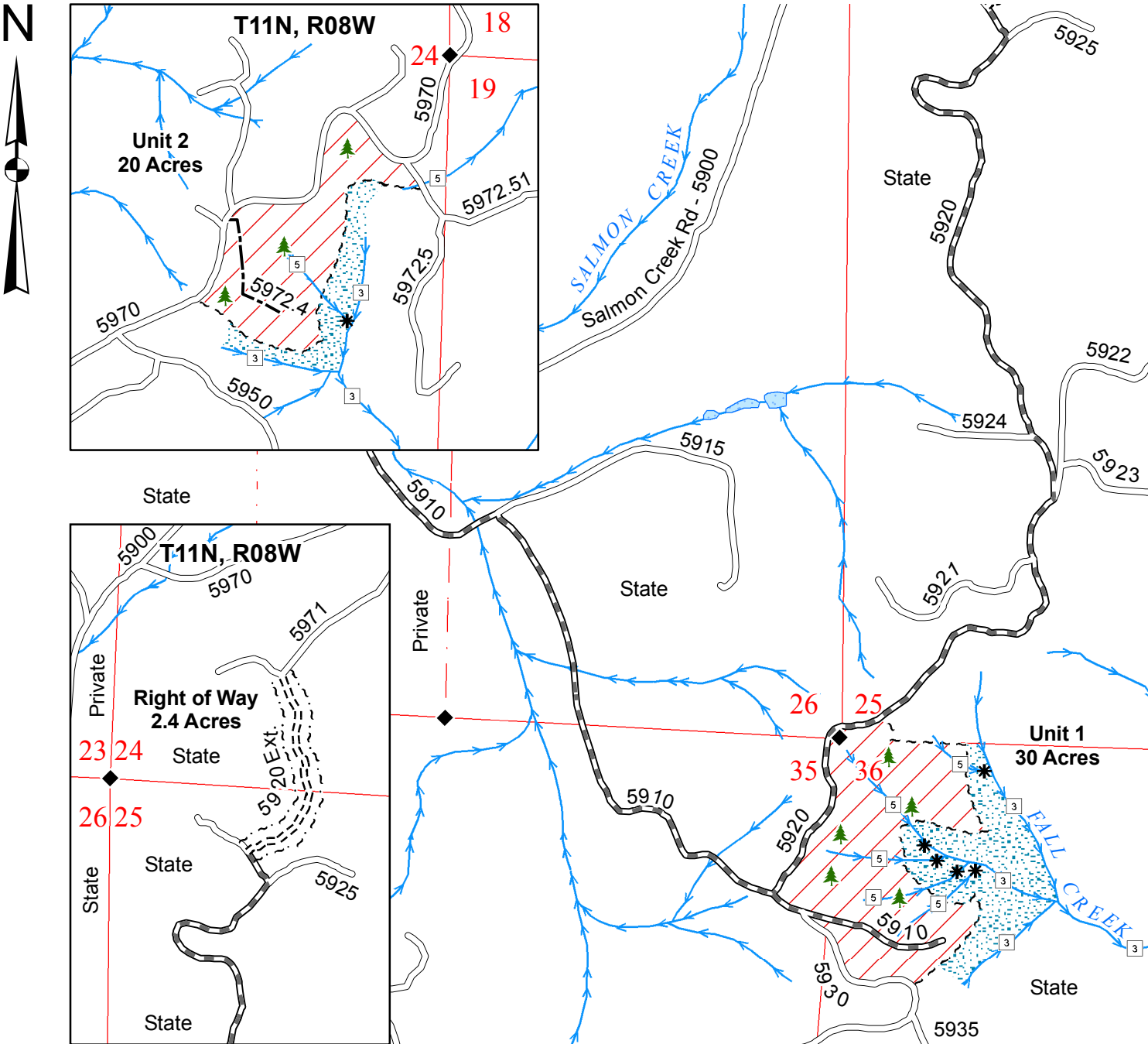
AGREEMENT NO: 30-078688

TRUST(S): State Forest Board Transfer (01) / Purchase (02), Common School (03), & University Transfer (05)

REGION: Pacific Cascade

COUNTY(S): Pacific

Township 11 North, Range 08 West, W.M.



Legend

Sale Area

RMZ

Sale Boundary Tags (White)

Right of Way Boundary Tags (Orange)

Existing Roads

Pre-haul Maintenance

Required Construction

Required Reconstruction

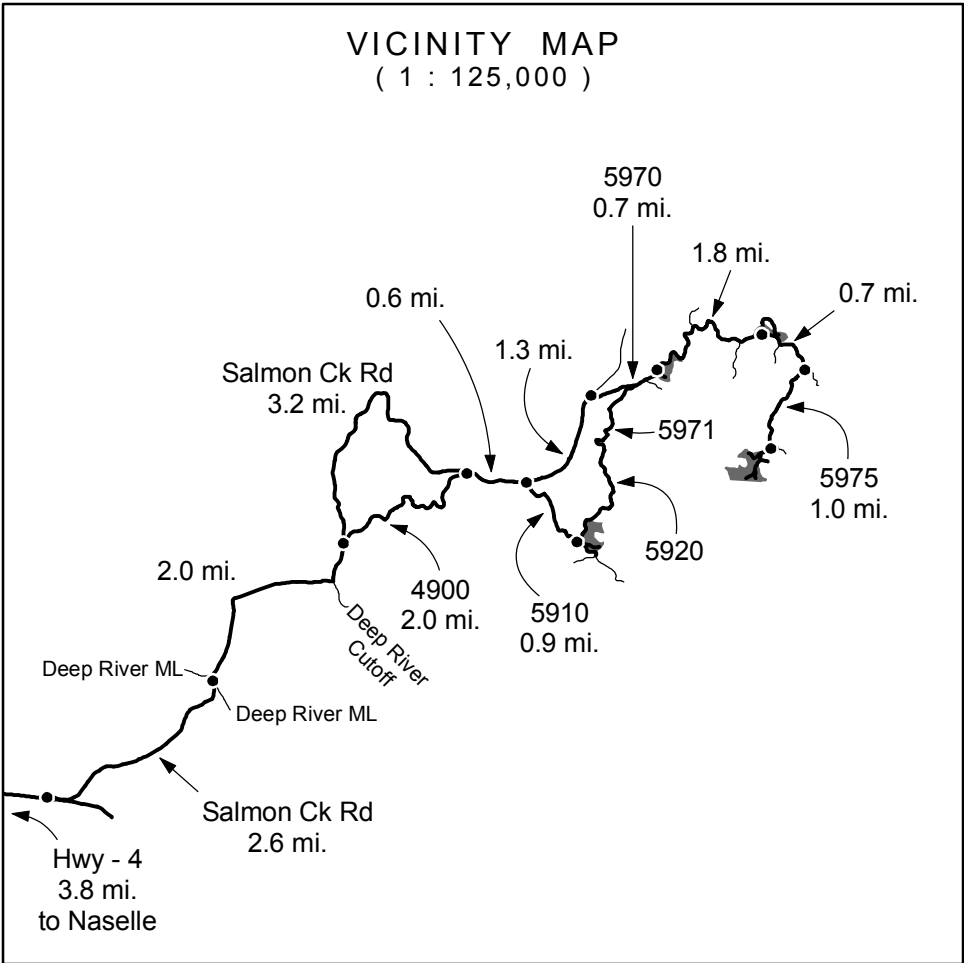
Optional Construction

Streams

Water Type 1 - 5

Monumented Corner

Leave Trees



Drawn By: Shawn B.  
Date: May 26, 2006  
Scale: 1" = 1000'  
Elevation: 400ft. - 1,160ft.

TIMBER SALE MAP

SALE NAME: DEER LICK

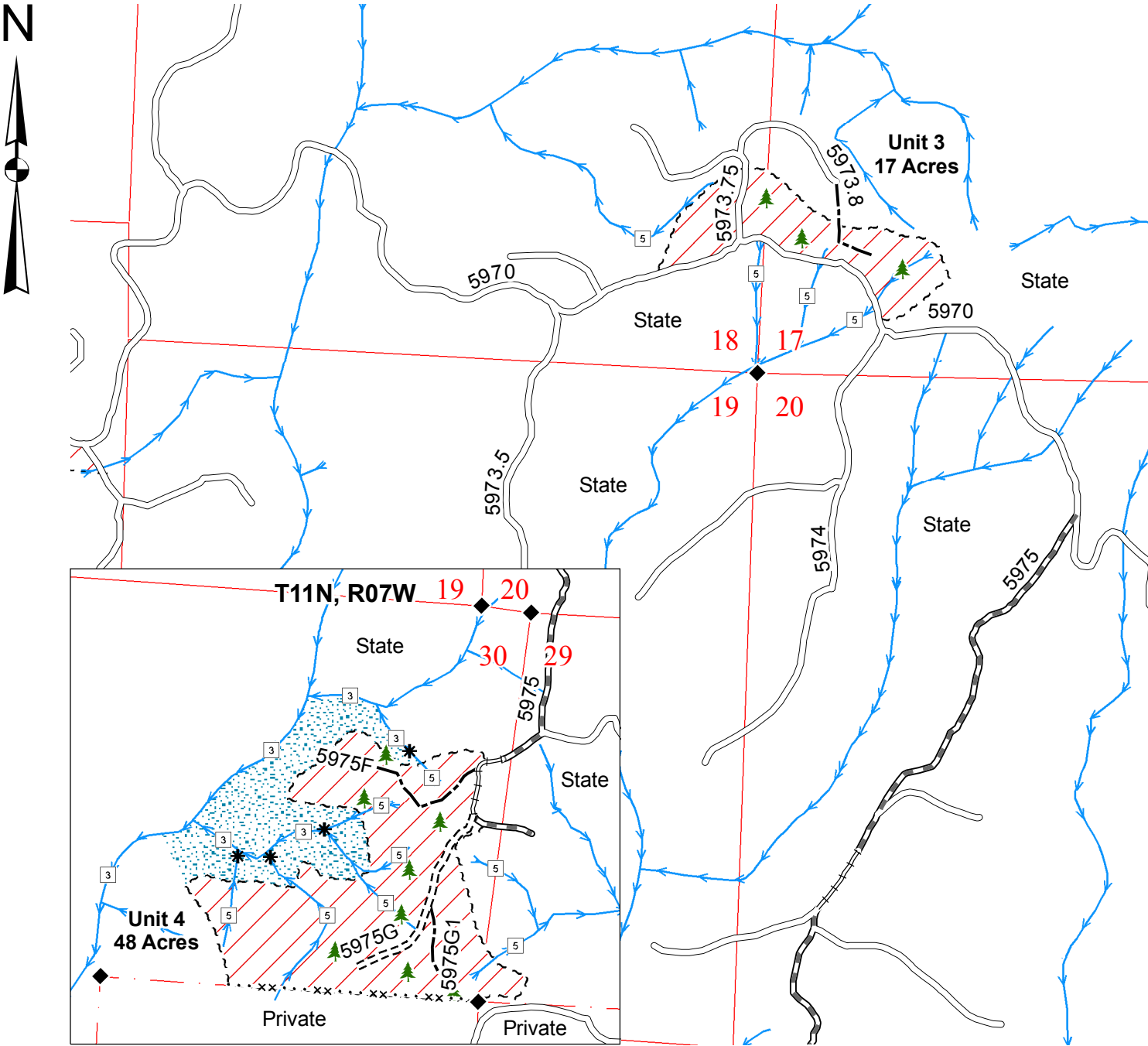
AGREEMENT NO: 30-078688

TRUST(S): State Forest Board Transfer (01) / Purchase (02), Common School (03), & University Transfer (05)

REGION: Pacific Cascade

COUNTY(S): Pacific

Township 11 North, Range 07 West, W.M.



Legend

Sale Area

RMZ

Sale Boundary Tags (White)

Property Line

Existing Roads

Pre-haul Maintenance

Required Construction

Required Reconstruction

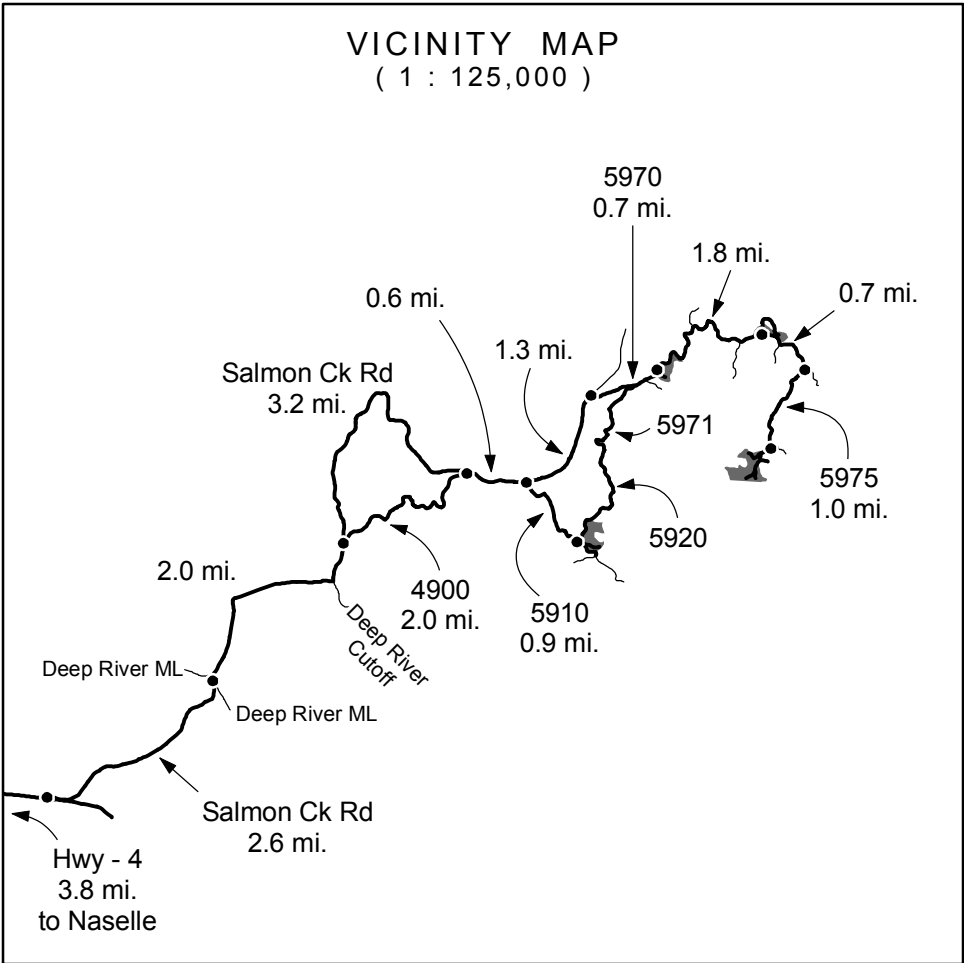
Optional Construction

Streams

Water Type 1 - 5

Monumented Corner

Leave Trees



Drawn By: Shawn B.

Date: May 26, 2006

Scale: 1" = 1000'

Elevation: 400ft. - 1,160ft.

TIMBER NOTICE OF SALE

**SALE NAME:** ST PAUL GRADE

**AGREEMENT NO:** 30-078778

**AUCTION:** August 31, 2006 starting at 10:00 a.m., **COUNTY:** Pacific  
Pacific Cascade Region Office, Castle Rock, WA

**SALE LOCATION:** Sale located approximately 10 miles northeast of Menlo, WA

**PRODUCTS SOLD AND SALE AREA:** All timber, except snags, pre-existing stumps, down timber existing three years prior to the day of sale, leave trees tagged out with leave tree area boundary tags and leave trees marked with blue paint, bounded by the following: timber sale boundary tags, reprod, and property lines in Unit #1; timber sale boundary tags, reprod, and the MC-100 road, in Unit #2; timber sale boundary tags, the MC-100 road, reprod, and property line in Unit #3; timber sale boundary tags, property line, reprod and the MC-1900 in Unit #4 on part(s) of Sections 2, 3 and 11 all in Township 13 North, Range 7 West, W.M., containing 171 acres, more or less.

**ESTIMATED SALE VOLUMES AND QUALITY:**

Species	Avg DBH	Ring Count	Total MBF	MBF by Grade								UT
				1P	2P	3P	SM	1S	2S	3S	4S	
Douglas fir	24.2	6	3,407				39		2,690	642	36	
Red alder	14.3		1,970					94	634	432	810	
Hemlock	14	7	1,218						575	496	147	
Red cedar	12.4		97						13	37	47	
Maple	14.1		64						23	15	26	
Spruce	18.4	5	49						14	18	17	
Sale Total			6,805									

**MINIMUM BID:** \$2,149,000.00 **BID METHOD:** Sealed Bids

**PERFORMANCE SECURITY:** \$100,000.00 **SALE TYPE:** Lump Sum

**EXPIRATION DATE:** September 30, 2008 **ALLOCATION:** Export Restricted

**BID DEPOSIT:** \$214,900.00 or Bid Bond. Said deposit shall constitute an opening bid at the appraised price.

**HARVEST METHOD:** Cable and Shovel. Lead end suspension is required on all cable settings. Landing debris shall be piled as directed by the Contract Administrator. Shovel operations may be suspended during periods of wet weather when rutting is apparent as a result of shovel logging. Shovel logging will not be permitted on slopes over 35% unless authorized in writing by the Contract Administrator. Within shovel logging areas, the shovel operator shall pile slash as directed by the Contract Administrator. See Schedule L for further harvesting specifications. Shovel yarding will not be permitted from September 30 to May 1 unless authorized in writing by the Contract Administrator.

**ROADS:** 1.91 stations of required reconstruction. 70.05 stations of optional construction. 0.50 stations of pre-haul maintenance. Rock is available at no charge from a state pit located in Sec. 21, T13N, R06W, W.M. Rip Rap, 6" minus, and 2½ inch minus rock may come from any commercial source as approved by the Contract Administrator. Any damage to any road resulting from any harvest operations will be repaired at the Purchasers expense unless authorized by the Contract Administrator. Purchaser shall construct and install a 41 foot reinforced concrete bridge. Road construction will not be permitted from September 30 to May 1 unless authorized in writing by the Contract Administrator. The hauling of forest products will not be permitted from September 30 to May 1 unless authorized in writing by the Contract Administrator, on the Mill Creek Mainline and 8000 Roads, accessing Units #1, #2, #3, and #4.

**ACREAGE DETERMINATION**

**CRUISE METHOD:** Acreage determined by GPS. Cruise was completed using variable plot cruise method. Harvesting activities are estimated to be approximately 75% cable and 25% shovel.

**FEES:** \$50,000.00 is due on day of sale. \$14.90 per MBF is due upon removal. These are in addition to the bid price.

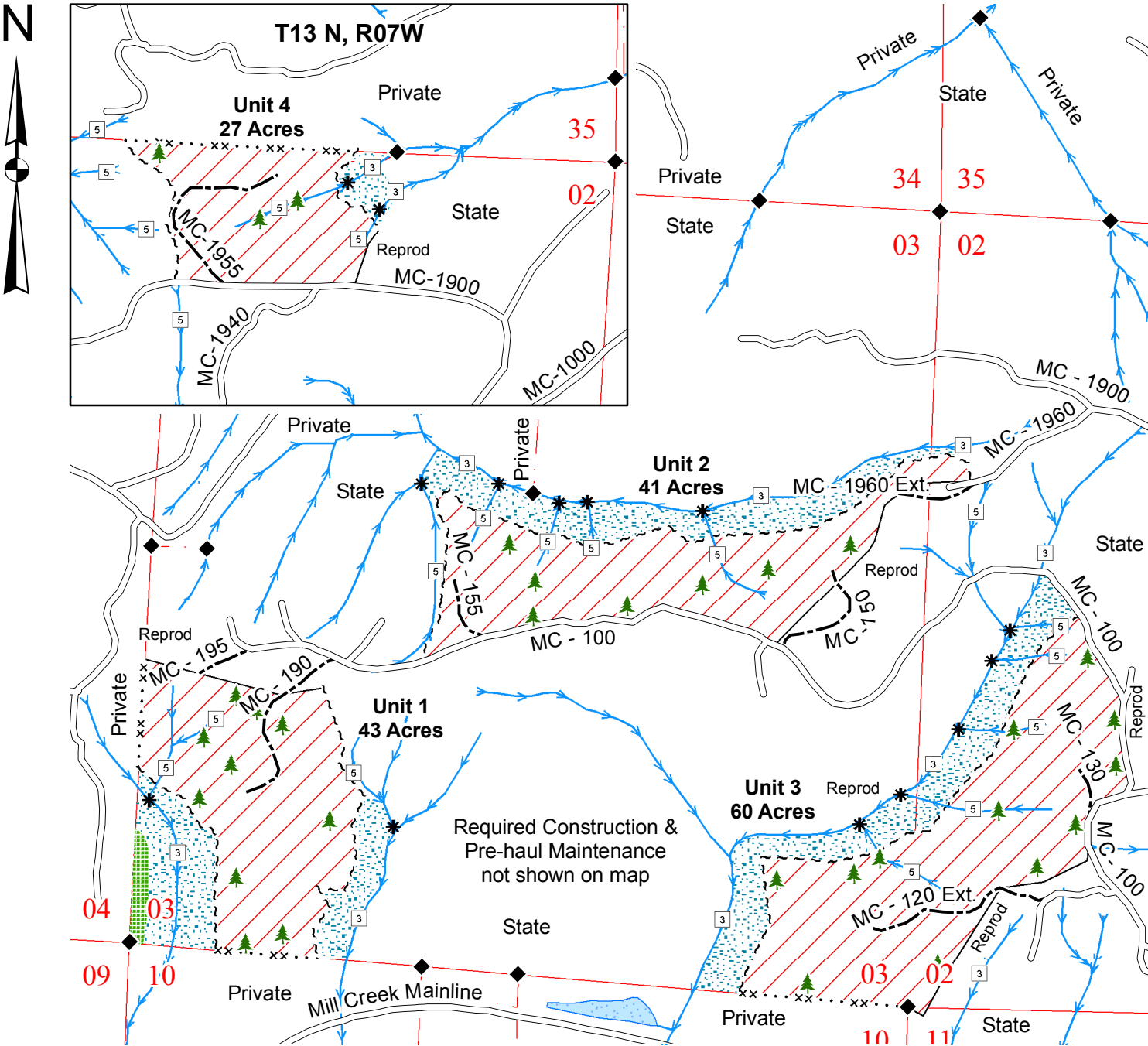
**SPECIAL REMARKS:** If Purchaser chooses to tailhold on private property, Purchaser shall obtain permit(s) and assumes responsibility for all costs associated with permit(s). See vicinity map for gate locations. Gate keys may be obtained from the region office.

TIMBER SALE MAP

SALE NAME: ST. PAUL GRADE  
AGREEMENT NO: 30-078778  
TRUST(S): State Forest Board Transfer (01)

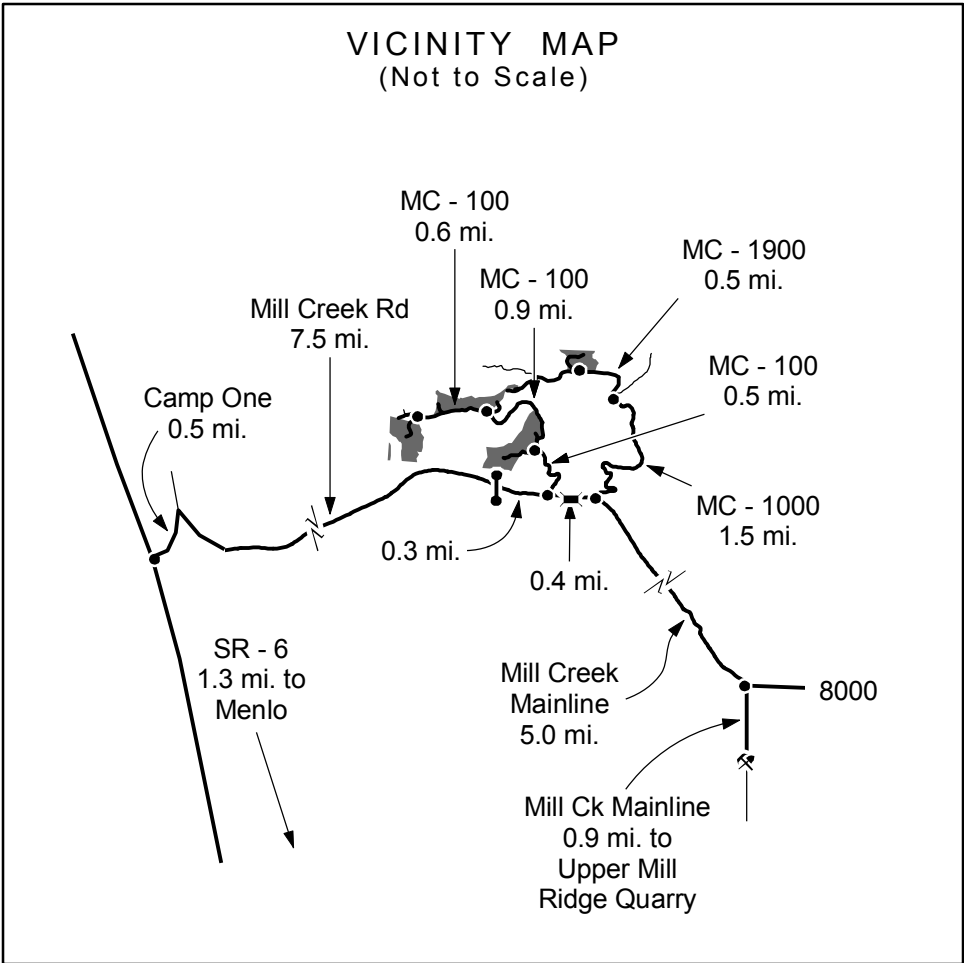
REGION: Pacific Cascade  
COUNTY(S): Pacific

Township 13 North, Range 07 West, W.M.



**Legend**

- Sale Area
- Leave Tree Area
- RMZ
- Sale Boundary Tags (White)
- Property Line
- Existing Roads
- Optional Construction
- Streams
- Water Type 1 - 5
- Monumented Corner
- Leave Trees
- Existing Rock Pit
- Gate (786 Master)
- Bridge Replacement



Drawn By: Shawn B.  
Date: May 26, 2006  
Scale: 1" = 1000'  
Elevation: 280ft. - 1,000ft.

TIMBER NOTICE OF SALE

**SALE NAME:** *LITTLE DIPPER*

**AGREEMENT NO:** *30-078594*

**AUCTION:** August 28, 2006 starting at 10:00 a.m., **COUNTY:** Skagit  
Northwest Region Office, Sedro Woolley, WA

**SALE LOCATION:** Sale located approximately 5 miles east of Wickersham

**PRODUCTS SOLD AND SALE AREA:** All timber, except trees marked with blue paint at DBH and root collar, trees tagged out with yellow leave tree tags and snags bounded as follows: by white timber sale boundary tags, orange right-of-way boundary tags, and young plantations, on part(s) of Sections 6 all in Township 36 North, Range 6 East, Sections 1 all in Township 36 North, Range 5 East, W.M., containing 53 acres, more or less.

**ESTIMATED SALE VOLUMES AND QUALITY:**

Species	Avg DBH	Ring Count	Total MBF	MBF by Grade								UT
				1P	2P	3P	SM	1S	2S	3S	4S	
Douglas fir	19	7	978				49		607	283	39	
Red alder	16		254						102	87	64	
Red cedar	13		200						9	140	51	
Maple	14		175						18	78	79	
Cottonwood	23		173					38	101		34	
Hemlock	12	7	165						27	104	35	
Sale Total			1,945									

**MINIMUM BID:** \$564,000.00 **BID METHOD:** Sealed Bids

**PERFORMANCE SECURITY:** \$100,000.00 **SALE TYPE:** Lump Sum

**EXPIRATION DATE:** September 30, 2007 **ALLOCATION:** Export Restricted

**BID DEPOSIT:** \$56,400.00 or Bid Bond. Said deposit shall constitute an opening bid at the appraised price.

**HARVEST METHOD:** Cable and Shovel. Cable; cable or shovel on slopes 25% or less. Falling and Yarding will not be permitted from November 1 to March 31 unless authorized in writing by the Contract Administrator (THIS PERTAINS TO GROUND-BASED EQUIPMENT ONLY) to reduce soil damage and erosion.

**ROADS:** 35.91 stations of required construction. 7.55 stations of required reconstruction. 10.44 stations of optional construction. Construction of the CA-1000 totals 35.91 stations. 10.44 stations on Spur A and Spur B will be abandoned if built. Reconstruction of the CA-1000 road totals 7.55 stations.

Development of a proposed gravel source at station 115+07 of the CA-1000 Road will involve clearing, stripping, and processing rock to generate gravel ballast. This rock is available at no cost on State land in Section 6, Township 36 North, Range 6 East, W.M.

Development of an existing hardrock source at station 61+75 of the CA-1100 Road will involve drilling, shooting, and processing rock to generate riprap. This rock is available at no cost on State land in Section 1, Township 36 North, Range 5 East, W.M.

The total rock required is approximately 38 cubic yards of riprap and approximately 6,030 cubic yards of 3-inch-minus ballast.

Road construction, reconstruction, abandonment, and the hauling of rock will not be permitted from November 1 to March 31 unless authorized in writing by the Contract Administrator to reduce soil damage and siltation. The hauling of forest products will not be permitted from November 1 to March 31 unless authorized in writing by the Contract Administrator.

**ACREAGE DETERMINATION**

**CRUISE METHOD:** Acres determined by GPS traverse. 57.1 acres gross. 3.6 acres deducted for leave tree retention clumps. 53.5 acres net. Cruised using variable plot method. Expansion factor used is 54.45 and 40 in the unit and 54.45 in the R/W and rockpit. Sighting height is 4.5 feet. Grid size plot spacing is 250 X 400 feet for the unit and 600 feet apart for the R/W and rockpit. Plot ratio cruise count is 1:1 for the unit and all plots were cruised for the R/W and rockpit. 42 plots were taken in the unit and 4 in the R/W and rockpit. Note: The .4 acres for the rockpit was added to the R/W for the purposes of the cruise.



**TIMBER NOTICE OF SALE**

---

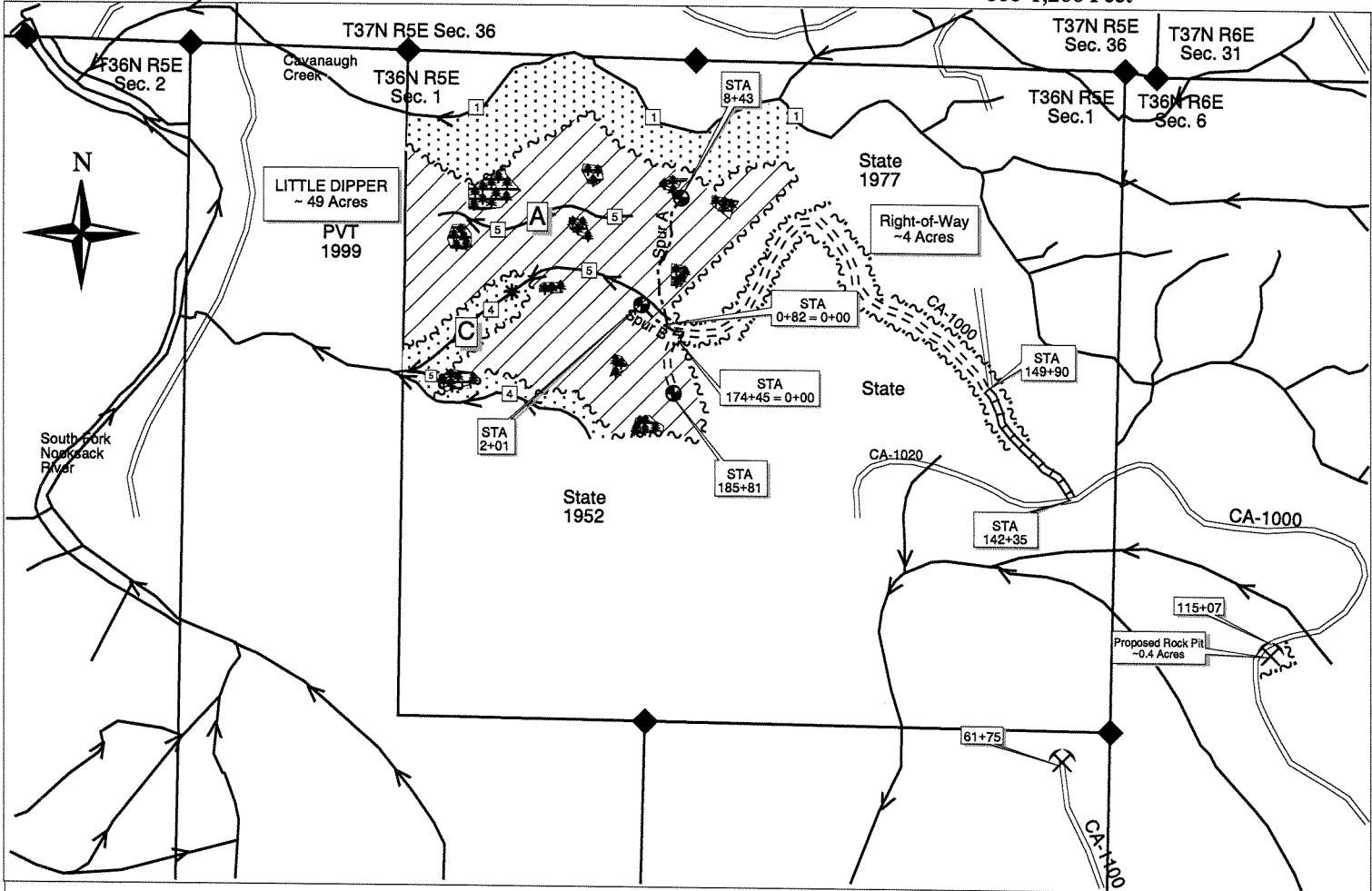
**FEES:** \$25,771.25 is due on day of sale. \$9.00 per MBF is due upon removal. These are in addition to the bid price.

**SPECIAL REMARKS:** Intermediate supports may be needed on a portion of the sale area (North/Central and/or West/Central areas of the sale), based on the analysis of profiles run using a 70' tower, and a 50' tailhold.

TIMBER SALE MAP

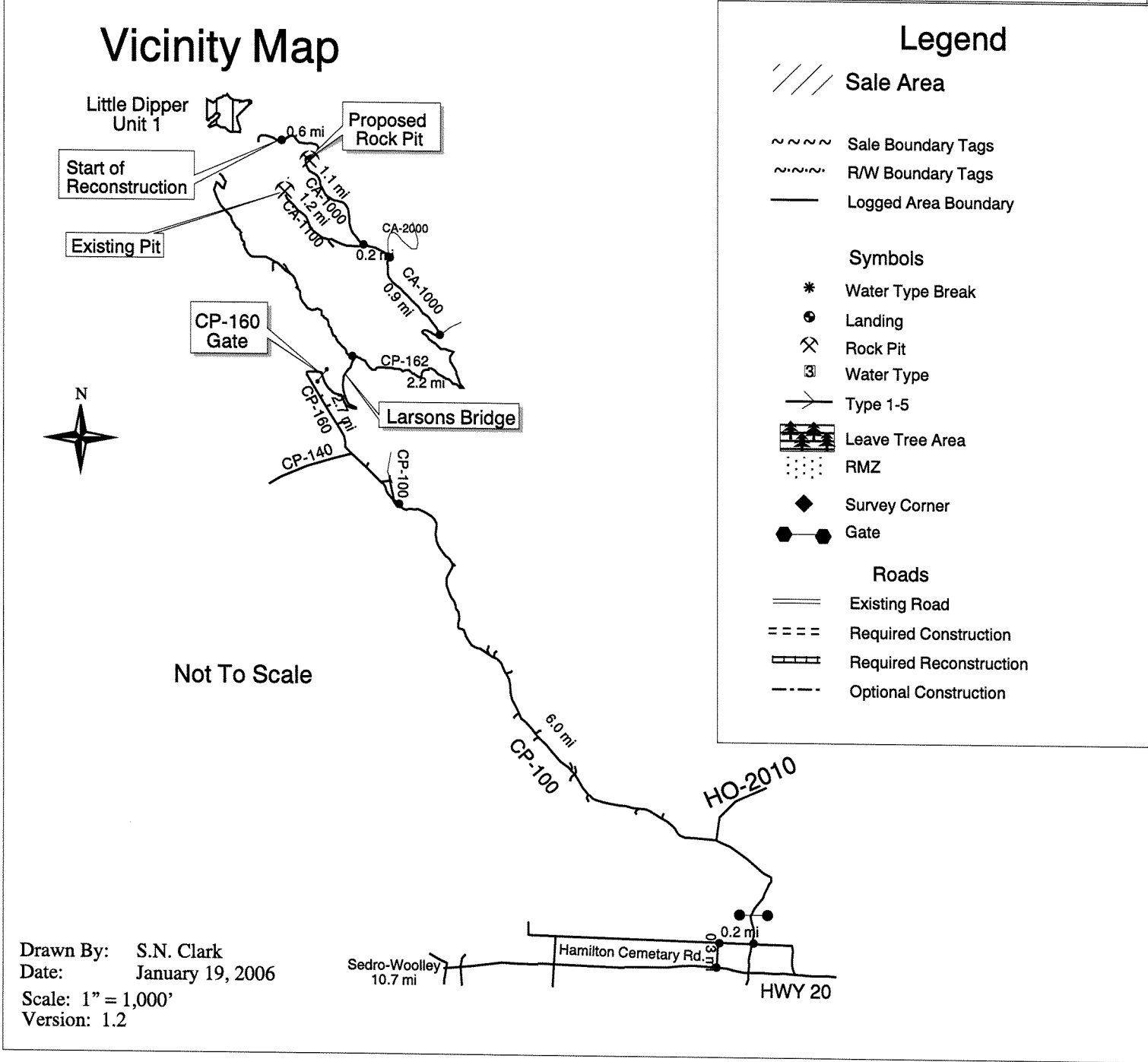
SALE NAME: Little Dipper  
AGREEMENT NO: 78594  
TRUST(S): 01 (Forest Board Transfer)

REGION: Northwest  
COUNTY(S): Skagit  
ELEVATION: 800-1,200 Feet



Vicinity Map

Legend



Drawn By: S.N. Clark  
Date: January 19, 2006  
Scale: 1" = 1,000'  
Version: 1.2





TIMBER NOTICE OF SALE

SALE NAME: QUASIMODO

AGREEMENT NO: 30-078596

AUCTION:

August 28, 2006 starting at 10:00 a.m.,  
Northwest Region Office, Sedro Woolley, WA

COUNTY: Skagit

SALE LOCATION:

Sale located approximately 3 miles south of Rockport

PRODUCTS SOLD  
AND SALE AREA:

All timber, except trees marked with blue paint at DBH and root collar and timber bound out with yellow leave tree area tags, bounded as follows: by white timber sale boundary tags, property lines, and the existing IC-0704 Road, in Unit #1; by white timber sale boundary tags, adjacent logged areas, property line, and the existing IC-ML Road, in Unit #2 on part(s) of Sections 7 all in Township 34 North, Range 10 East, Sections 1 and 12 all in Township 34 North, Range 9 East, W.M., containing 78 acres, more or less.

ESTIMATED SALE VOLUMES AND QUALITY:

Species	Avg DBH	Ring Count	Total MBF	MBF by Grade								UT
				1P	2P	3P	SM	1S	2S	3S	4S	
Red cedar	16		577							492	85	
Hemlock	13	8	487						145	246	96	
Douglas fir	12	9	221				11		50	101	59	
Maple	20		200						42	65	93	
Red alder	15		87						11	53	23	
Sale Total			1,572									

MINIMUM BID:

\$456,000.00

BID METHOD:

Sealed Bids

PERFORMANCE  
SECURITY:

\$91,200.00

SALE TYPE:

Lump Sum

EXPIRATION DATE:

September 30, 2008

ALLOCATION:

Export Restricted

BID DEPOSIT:

\$45,600.00 or Bid Bond. Said deposit shall constitute an opening bid at the appraised price.

HARVEST METHOD:

Cable and Shovel. Cable; cable or shovel on slopes 25% or less. Falling and Yarding will not be permitted from November 1 to March 31 unless authorized in writing by the Contract Administrator (THIS PERTAINS TO GROUND-BASED YARDING ONLY) to reduce soil damage and erosion.

ROADS:

75.50 stations of optional construction. 31.00 stations of optional reconstruction. 31.00 stations of existing road to be abandoned. 75.50 stations of new road to be abandoned if built

Development of an existing hardrock source (Igor Hardrock Pit, IC-0706) at station 31+90 of the IC-07 Road will involve clearing, stripping, drilling, shooting, and processing rock to generate approximately 170 cubic yards of riprap and approximately 7,230 cubic yards of 3-inch-minus ballast rock. This rock is available at no cost on State land in Section 12, Township 34 North, Range 9 East, W.M.

Road construction, road reconstruction, road abandonment, and the hauling of rock will not be permitted from November 1 to March 31 unless authorized in writing by the Contract Administrator to reduce soil damage and siltation. The hauling of forest products will not be permitted from November 1 to March 31 unless authorized in writing by the Contract Administrator to reduce soil damage and siltation.

ACREAGE DETERMINATION

CRUISE METHOD:

Acres determined by GPS traverse. 83.0 acres gross. 4.8 acres deducted for green tree retention clumps, existing roads, and for an exclusion area. 78.2 acres net. Cruised using variable plot method. Expansion factor used is 40.00. Sighting height is 4.5 feet. Grid size plot spacing is 320 X 200 feet in Units #1 and #2. Plot ratio cruise count is 1:1 in Units #1 and #2. 18 plots were taken in Unit #1, and 34 plots taken in Unit #2, for a total of 52 plots.

FEES:

\$20,829.00 is due on day of sale. \$9.00 per MBF is due upon removal. These are in addition to the bid price.

SPECIAL REMARKS:

None.

TIMBER SALE MAP

Township 34 North Range 9 East

SALE NAME: Quasimodo

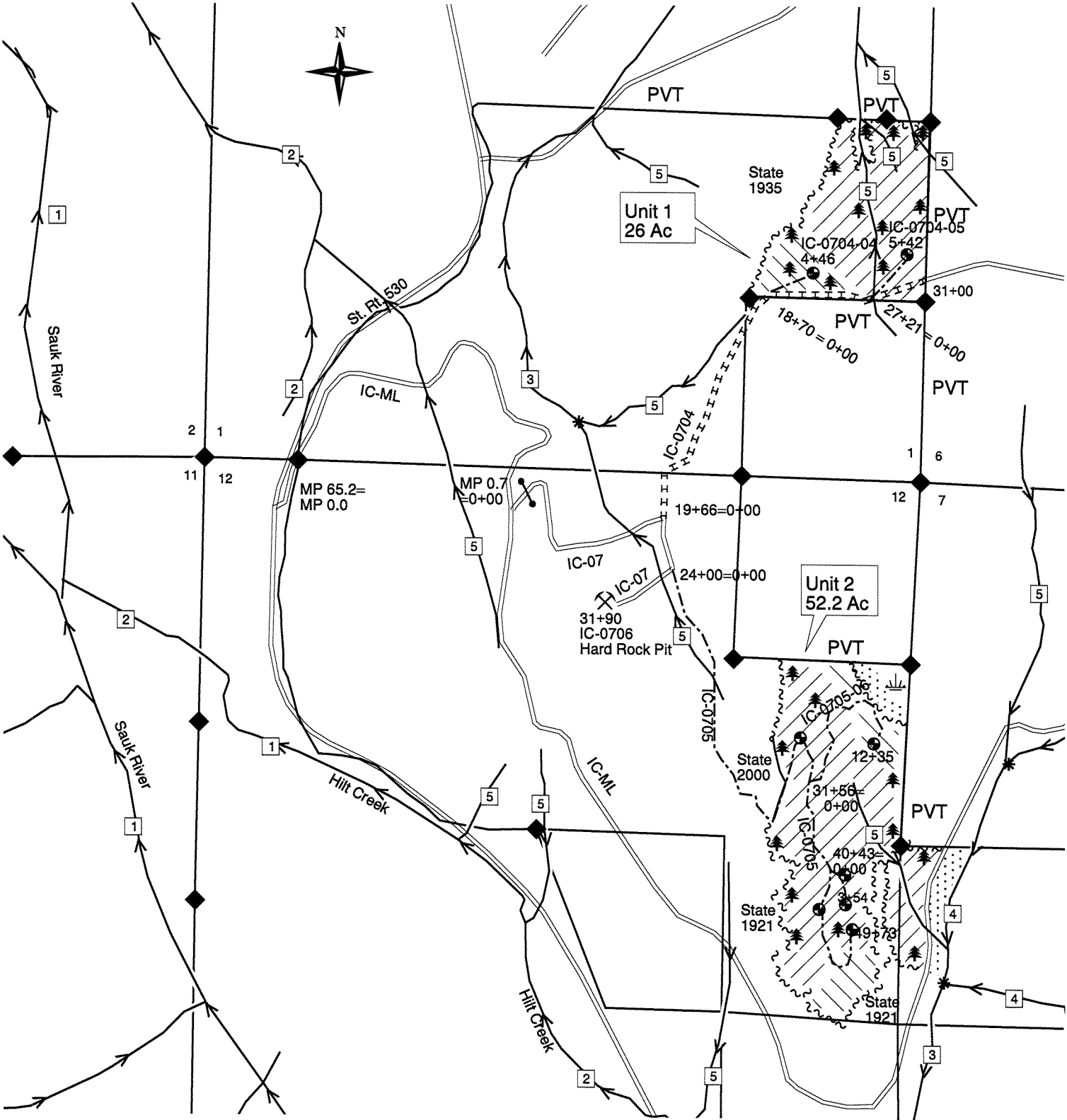
AGREEMENT NO: 03-078596

TRUST(S): Common School Indemnity (03)

REGION: Northwest

COUNTY(S): Skagit

Elevation: 350 - 1,100 feet



1000 0 1000 Feet

Sedro-Woolley St. Rt. 20 31.4 mi Rockport

Vicinity Map  
Not to Scale

Legend

Symbols

- Water Type Break
- Wetlands
- Leave Trees
- Rock Pit
- Landing
- Water Type
- WMZ
- Gate
- Survey Corner

Streams

- Type 1-5

Units

- Sale Boundary Tags
- Logged Area Boundary

Roads

- Existing Road
- Optional Construction
- Optional Reconstruction

Logging Methods

- Cable
- Shovel

Drawn By: D. Klingbiel

Date: December 2, 2005

Scale: 1" = 1000'

The vicinity map shows the location of the timber sale units relative to Sedro-Woolley, Rockport, and Darrington. It includes a north arrow and a scale bar. The map shows the location of Unit 1 and Unit 2, and the roads connecting them to the surrounding area. The map is labeled with distances: 1.4 mi from Sedro-Woolley to Rockport, 1.6 mi from Rockport to Darrington, and 1.5 mi from Darrington to the timber sale units.

Version: 1.2

TIMBER NOTICE OF SALE

**SALE NAME:** BRUIN BORDERS

**AGREEMENT NO:** 30-078668

**AUCTION:** August 28, 2006 starting at 10:00 a.m., **COUNTY:** Skagit  
Northwest Region Office, Sedro Woolley, WA

**SALE LOCATION:** Sale located approximately 26 miles northeast of Arlington.

**PRODUCTS SOLD AND SALE AREA:** All timber bounded by white timber sale boundary tags, except trees marked with blue paint at DBH and root collar, trees tagged out with yellow leave tree tags, and any dead and down cedar, cedar stumps, and cedar snags within areas tagged out with yellow leave tree tags, in Unit #1; all timber bounded by white timber sale boundary tags, blue special management boundary tags along property lines, and the BR-ML Road, except trees marked with blue paint at DBH and root collar, trees tagged out with yellow leave tree tags, and any dead and down cedar, cedar stumps, and cedar snags in Unit #2; all trees along property lines with blue special management tags in Unit #2; all timber bounded by orange right of way boundary tags, on part(s) of Sections 6 and 7 all in Township 33 North, Range 6 East, W.M., containing 73 acres, more or less.

ESTIMATED SALE VOLUMES AND QUALITY:

Species	Avg DBH	Ring Count	Total MBF	MBF by Grade								UT
				1P	2P	3P	SM	1S	2S	3S	4S	
Douglas fir	28	8	1,059						940	114	5	
Hemlock	14	8	1,001						412	428	160	
Red cedar	13		347							253	95	
Red alder	13		330						73	102	155	
Silver fir	17		119						48	66	5	
Sale Total			2,856									

**MINIMUM BID:** \$873,000.00 **BID METHOD:** Sealed Bids

**PERFORMANCE SECURITY:** \$100,000.00 **SALE TYPE:** Lump Sum

**EXPIRATION DATE:** September 30, 2008 **ALLOCATION:** Export Restricted

**BID DEPOSIT:** \$87,300.00 or Bid Bond. Said deposit shall constitute an opening bid at the appraised price.

**HARVEST METHOD:** Cable; cable or shovel on slopes 25% or less. Falling and Yarding will not be permitted from November 1 to May 31 unless authorized in writing by the Contract Administrator (THIS PERTAINS TO GROUND-BASED YARDING ONLY) to reduce soil damage and erosion.

**ROADS:** 13.96 stations of required construction. 35.05 stations of optional construction. Construction of the BR-65 and BR-6503 roads totals 49.01 stations. Construction will involve clearing, grubbing, excavation and embankment to subgrade, landing and turnout construction, culvert installation, geotextile installation, application of 3inch-minus ballast rock.

Development of an existing hardrock source at station 44+00 of the BR-89 road to generate approximately 207 cubic yards of rip rap and approximately 5610 cubic yards of 3-inch-minus ballast rock. This rock is available at no cost on State land in Section 4, Township 33 North, Range 6 East, W.M.

Road construction and the hauling of rock will not be permitted from November 1 to March 31 unless authorized in writing by the Contract Administrator to reduce soil damage and siltation. The hauling of forest products will not be permitted from November 1 to March 30 unless authorized in writing by the Contract Administrator to reduce soil damage and siltation.

ACREAGE DETERMINATION

**CRUISE METHOD:** Acres determined by GPS traverse. 77.8 acres gross. 4.9 acres deducted for green tree retention clumps. 72.9 acres net. Cruised using variable plot method. Expansion factor used is 40.00 for Unit #1 and #2 and 54.45 in the right-of-way. Sighting height is 4.5 feet. Grid size plot spacing is 400 X 200 feet in Unit #1, 280 X 200 feet in Unit #2, and 400 feet apart in the right-of-way. Plot ratio cruise count is 1:1 in Units #1 and #2. 29 plots were taken in Unit #1, and 10 plots taken in Unit #2, and 2 plots were taken in the right-of-way, for a total of 41 plots.

**TIMBER NOTICE OF SALE**

---

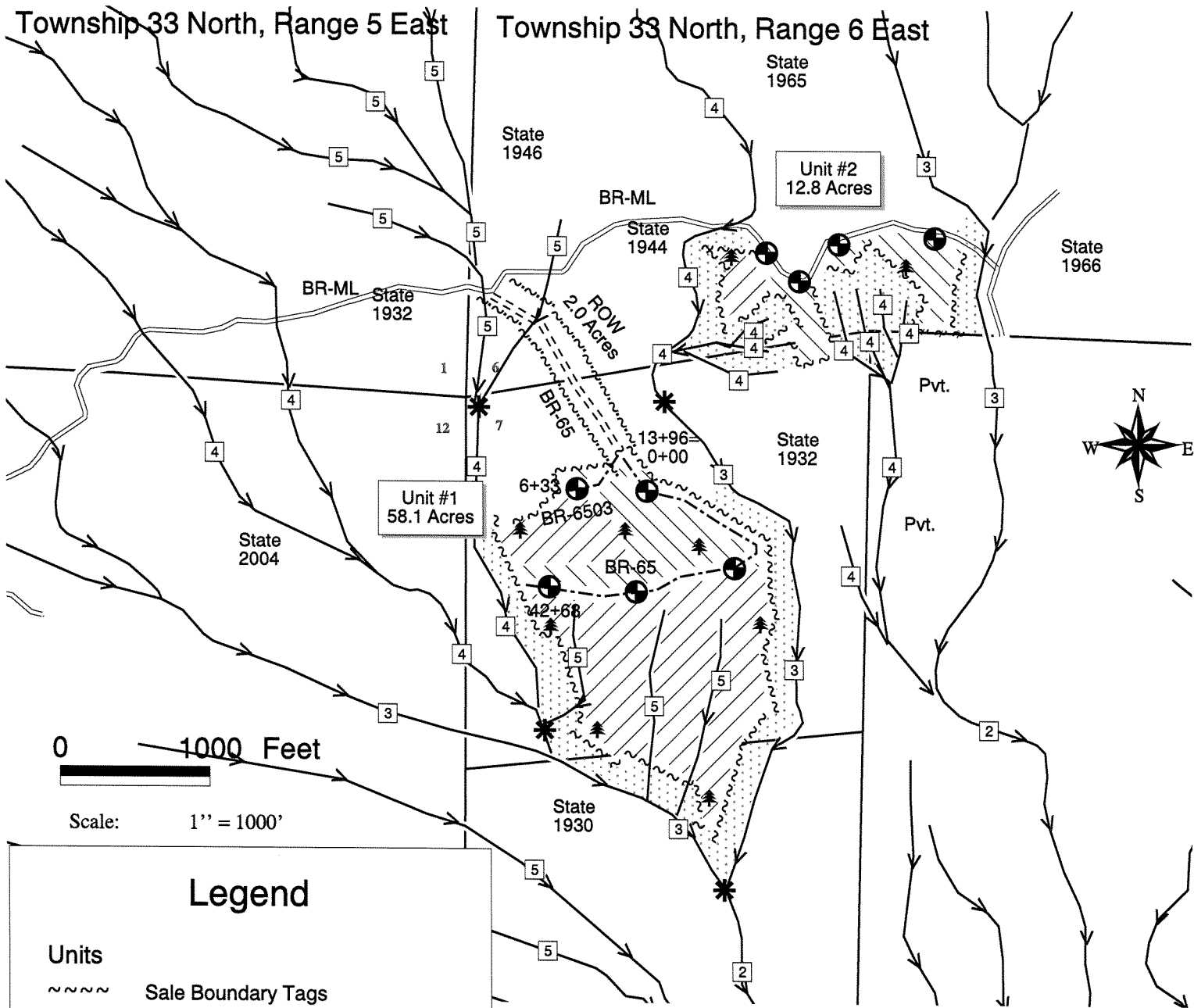
**FEES:** \$37,842.00 is due on day of sale. \$9.00 per MBF is due upon removal. These are in addition to the bid price.

**SPECIAL REMARKS:** Following property lines where mature timber exists on private land, blue special management boundary tags are used to mark the sale boundary/property line. In this area the boundary is marked with blue special management tags and orange paint. These tags and paint have been placed on the last “take” trees nearest the property line as you approach from State land. Trees with special management tags and orange paint are part of the products sold and should be cut; trees south of the special management boundary line should be left since that mature timber is on private land.

TIMBER SALE MAP

SALE NAME: Bruin Borders  
AGREEMENT NO: 30-078668  
TRUST(S): Agricultural School (04), Forest Board Transfer (01)

REGION: Northwest  
COUNTY(S): Skagit  
ELEVATION: 1600 feet - 2100 feet



Legend

Units

- ~~~~~ Sale Boundary Tags
- ~~~~~ Management Unit Boundary Tags
- ~~~~~ R/W Boundary Tags

Logging Methods

- /// Cable
- /// Shovel

Roads

- ==== Existing Road
- ===== Required Construction
- Optional Construction

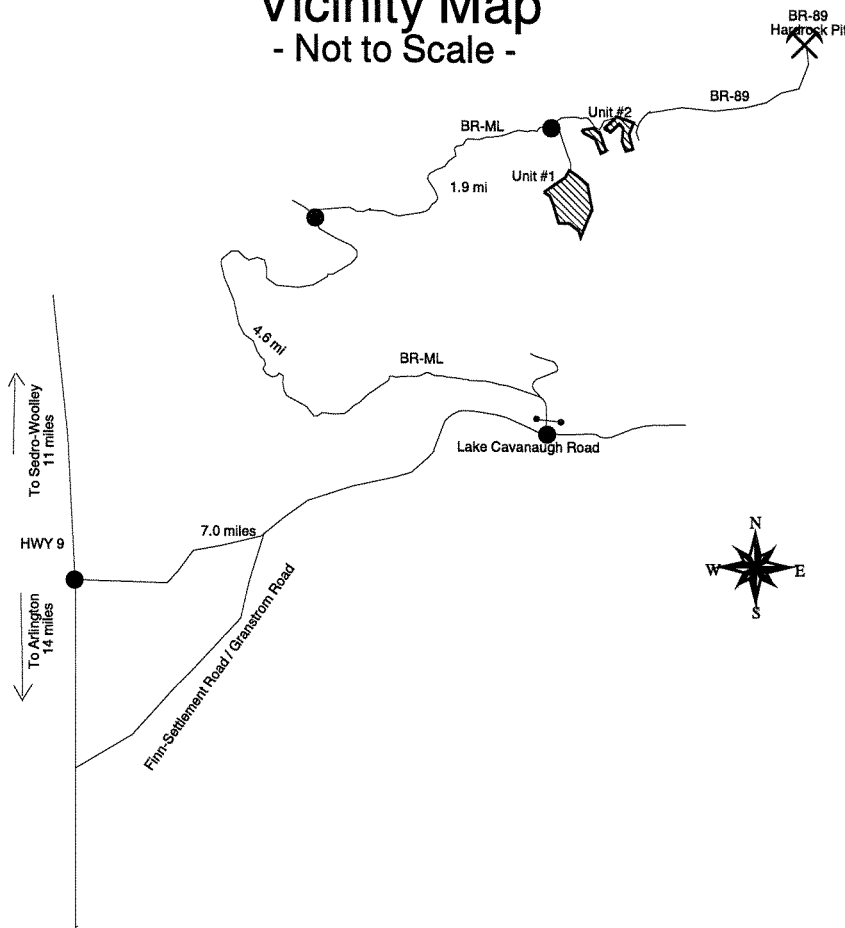
Streams

- Type 1-5
- Wetland Boundary
- RMZ

Symbols

- ◆ Survey Corner
- ⌘ Marked Leave Tree Areas
- \* Water Type Break
- ⊕ Landing
- [3] Water Type
- Gate

Vicinity Map  
- Not to Scale -



Drawn By: Mark Arneson  
Date: January 10, 2006  
Version: 1.2



TIMBER NOTICE OF SALE

**SALE NAME:** BANNOCKBURN

**AGREEMENT NO:** 30-078810

**AUCTION:** August 31, 2006 starting at 10:00 a.m., **COUNTY:** Thurston  
Pacific Cascade Region Office, Castle Rock, WA

**SALE LOCATION:** Sale located approximately 11 miles southeast of Tenino, WA

**PRODUCTS SOLD AND SALE AREA:** All timber, except snags, pre-existing stumps, down timber existing three years prior to the day of sale, trees tagged out with leave tree area tags and leave trees marked with blue paint, bounded by the following: timber sale boundary tags, reprod and the OLC 8900 road in Unit #1; timber sale boundary tags and the OLC 2030 road in Unit #2 on part(s) of Sections 4, 5 and 8 all in Township 15 North, Range 1 East, W.M., containing 161 acres, more or less.

ESTIMATED SALE VOLUMES AND QUALITY:

Species	Avg DBH	Ring Count	Total MBF	MBF by Grade								UT
				1P	2P	3P	SM	1S	2S	3S	4S	
Douglas fir	19.7	7	3,487			32	271		2,143	892	149	
Red alder	14		1,313					41	127	611	534	
Grand fir	19		82						39	37	6	
Red cedar	12.5		26							4	22	
Maple	12.3		15								15	
Cottonwood	33		10					7	3			
Hemlock	14.4		10							8	2	
Sale Total			4,943									

**MINIMUM BID:** \$1,601,000.00 **BID METHOD:** Sealed Bids

**PERFORMANCE SECURITY:** \$100,000.00 **SALE TYPE:** Lump Sum

**EXPIRATION DATE:** October 31, 2008 **ALLOCATION:** Export Restricted

**BID DEPOSIT:** \$160,100.00 or Bid Bond. Said deposit shall constitute an opening bid at the appraised price.

**HARVEST METHOD:** Cable and shovel logging methods. A detailed felling and yarding plan shall be required prior to any harvest activities and approved in writing by the Contract Administrator. Lead end suspension required on all cable settings. See Clause H-140 for further harvesting requirements. Shovel yarding will not be permitted from September 30 to May 1 unless authorized in writing by the Contract Administrator.

**ROADS:** 5.55 stations of required construction. 92.70 stations of optional construction. 13.98 stations of optional reconstruction. 102.13 stations of pre-haul maintenance. Rock for construction and reconstruction under this contract may be obtained from any commercial source as approved in writing by the Contract Administrator. Any damage to any road resulting from any harvest operations will be repaired at the Purchasers expense unless authorized by the Contract Administrator. Road construction will not be permitted from September 30 to May 1 unless authorized in writing by the Contract Administrator.

ACREAGE DETERMINATION

**CRUISE METHOD:** The sale acres were determined by GPS. The sale area was cruised using a variable plot cruise method. Harvesting activities are estimated to be approximately 74% ground-based and 26% cable harvesting.

**FEES:** \$50,000.00 is due on day of sale. \$12.13 per MBF is due upon removal. These are in addition to the bid price.

**SPECIAL REMARKS:** Any and or/all operation(s) of this sale may be temporarily suspended, when, in the opinion of the Contract Administrator, there is the possibility of sediment delivered to flowing water tributary to any fish bearing stream. See vicinity map for gate locations. Gate keys may be obtained from the region office.

TIMBER SALE MAP

SALE NAME: BANNOCKBURN

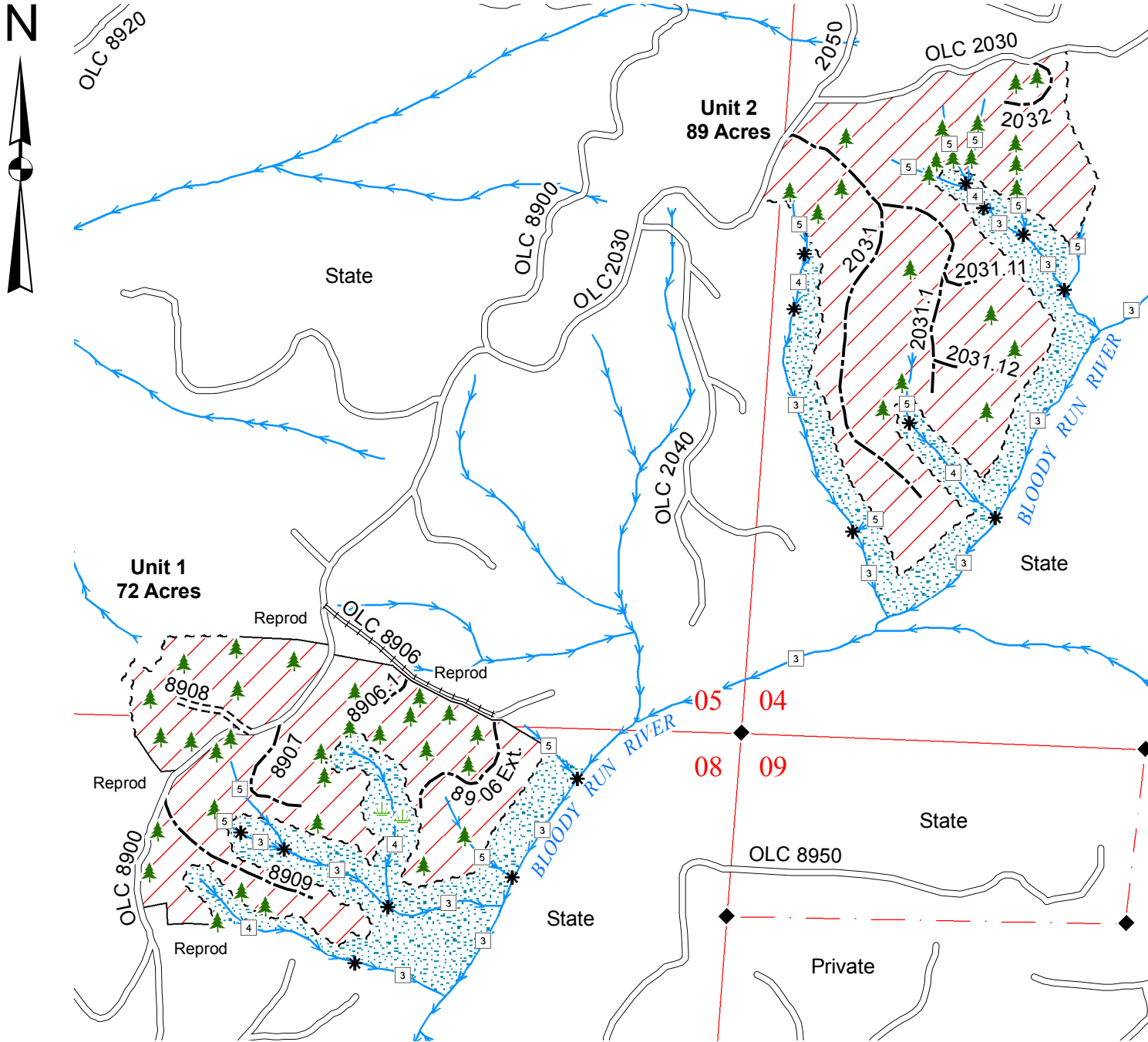
AGREEMENT NO: 30-078810

TRUST(S): State Forest Board Transfer (01)

REGION: Pacific Cascade

COUNTY(S): Thurston

Township 15 North, Range 01 East, W.M.



Legend

Sale Area

RMZ

Sale Boundary Tags (White)

Existing Roads

Required Construction

Required Reconstruction

Optional Construction

Streams

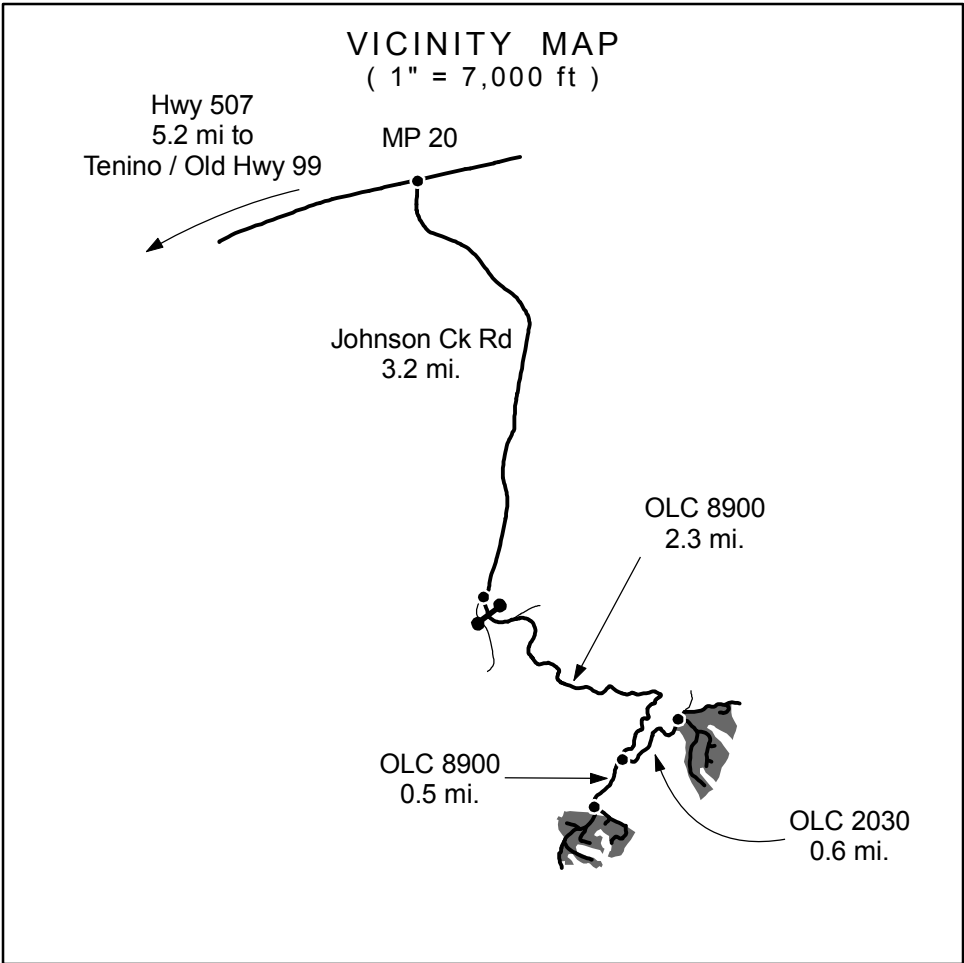
Water Type 1 - 5

Monumented Corner

Leave Trees

Forested Wetland

Gate ( 786 Master )



Drawn By: Shawn B.  
Date: May 26, 2006  
Scale: 1" = 1000'  
Elevation: 520ft. - 1,200ft.



TIMBER NOTICE OF SALE

**SALE NAME:** TOBASCO

**AGREEMENT NO:** 30-077868

**AUCTION:** August 28, 2006 starting at 10:00 a.m.,  
Northwest Region Office, Sedro Woolley, WA

**COUNTY:** Whatcom

**SALE LOCATION:** Sale located approximately 3 miles NE of Maple Falls

**PRODUCTS SOLD AND SALE AREA:** All timber, except trees marked with blue paint at DBH and root collar and trees tagged out with yellow leave tree tags, bounded by white timber sale boundary tags, existing harvest boundaries, and existing roads on part(s) of Sections 20 all in Township 40 North, Range 6 East, W.M., containing 46 acres, more or less.

**ESTIMATED SALE VOLUMES AND QUALITY:**

Species	Avg DBH	Ring Count	Total MBF	MBF by Grade								UT
				1P	2P	3P	SM	1S	2S	3S	4S	
Douglas fir	18.5	8	1,033				24		623	333	53	
Red cedar	15.7		140							118	22	
Maple	17.2		73						6	35	32	
Hemlock	12.7	8	62						23	28	11	
Red alder	14.6		16						2	4	10	
Cottonwood	20.3		15						13		1	
Sale Total			1,339									

**MINIMUM BID:** \$501,000.00

**BID METHOD:** Sealed Bids

**PERFORMANCE SECURITY:** \$100,000.00

**SALE TYPE:** Lump Sum

**EXPIRATION DATE:** September 30, 2007

**ALLOCATION:** Export Restricted

**BID DEPOSIT:** \$50,100.00 or Bid Bond. Said deposit shall constitute an opening bid at the appraised price.

**HARVEST METHOD:** Forest products sold under this contract shall be felled using chainsaw; chainsaw or feller-buncher on slopes 25% or less, and yarded by cable; cable or shovel on slopes 25% or less, unless authority to use other equipment is granted in writing by the State. Falling and Yarding will not be permitted from October 15 to May 1 unless authorized in writing by the Contract Administrator to reduce soil damage and erosion (THIS PERTAINS TO GROUND-BASED EQUIPMENT ONLY).

**ROADS:** 40.56 stations of optional construction. 40.56 stations to be abandoned if built.

Development of an existing hardrock source (Nolte Pit) at milepost 1.2 of the BM-2120 Road. Development will involve drilling, shooting, and processing rock to generate approximately 69 cubic yards of riprap and approximately 2,960 cubic yards of 3-inch-minus ballast rock. This rock is available at no cost on State land in Section 20, Township 40 North, Range 6 East, W.M.

Road construction, or abandonment, of any road shall not be permitted from November 1 to March 31 unless authorized in writing by the Contract Administrator to reduce soil damage and siltation. The hauling of forest products will not be permitted from November 1 to March 31 unless authorized in writing by the Contract Administrator.

**ACREAGE DETERMINATION**

**CRUISE METHOD:** Acres determined by GPS traverse. 49.6 acres gross. 3.9 acres deducted for green tree retention clumps. 45.7 acres net. Cruised using variable plot method. Expansion factor used is 40.00 and 54.45. Sighting height is 4.5 feet. Grid size plot spacing is 200 X 200 feet. Plot ratio cruise count is 1:1. 49 plots were taken.

**FEES:** \$17,741.75 is due on day of sale. \$9.00 per MBF is due upon removal. These are in addition to the bid price.

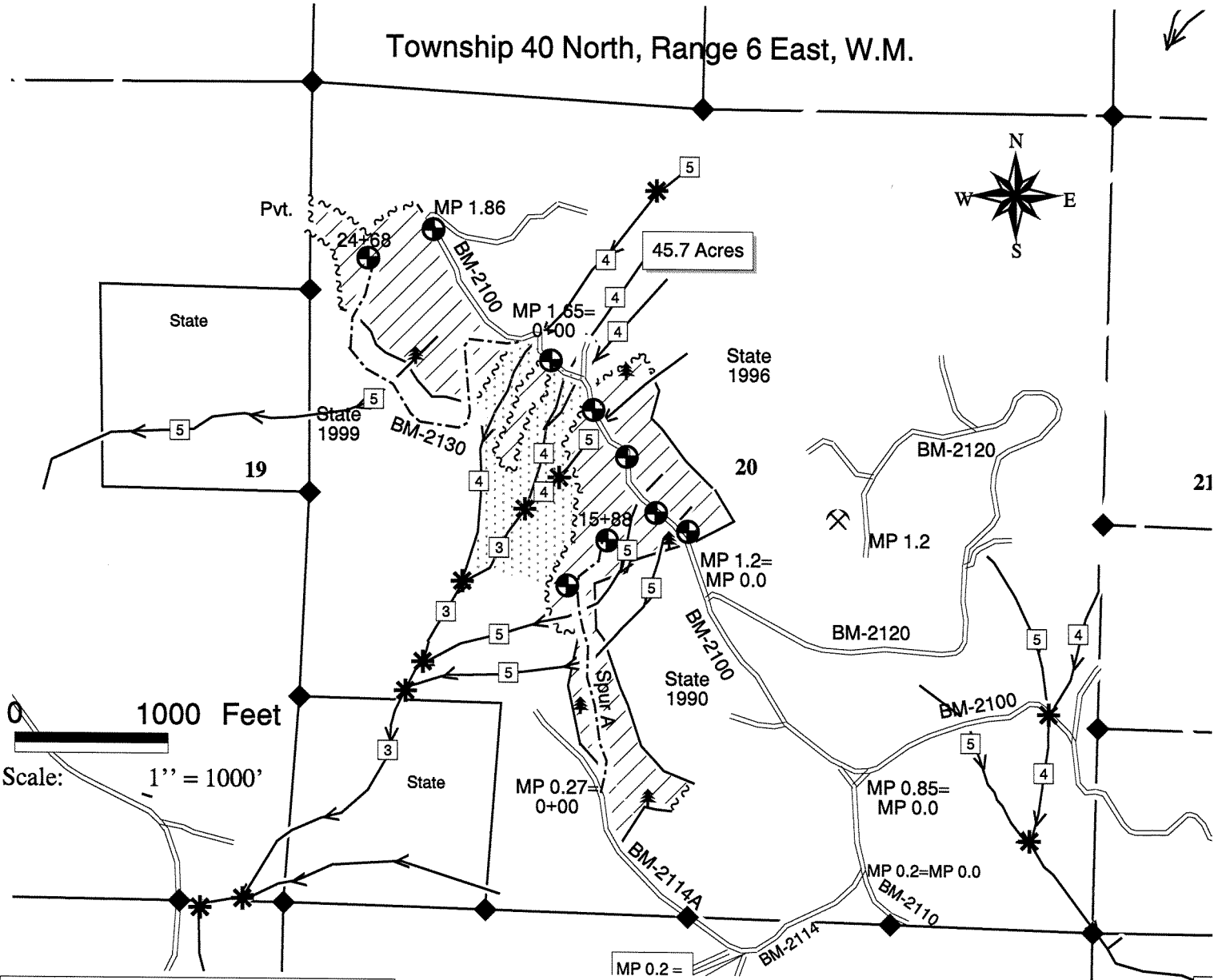
**SPECIAL REMARKS:** If intermediate supports are used for yarding, based on an analysis of a profile run using a 50' tower, construction of the entire BM-2130 Road may not be necessary.

TIMBER SALE MAP

SALE NAME: Tobasco  
AGREEMENT NO: 30-077868  
TRUST(S): Forest Board Transfer (01)

REGION: Northwest  
COUNTY(S): Whatcom  
ELEVATION: 1000 feet - 1600 feet

Township 40 North, Range 6 East, W.M.



**Units**

- ~~~~ Sale Boundary Tags
- Logged Area Boundary
- //// Sale Area

**Roads**

- Existing Road
- Optional Construction

**Streams**

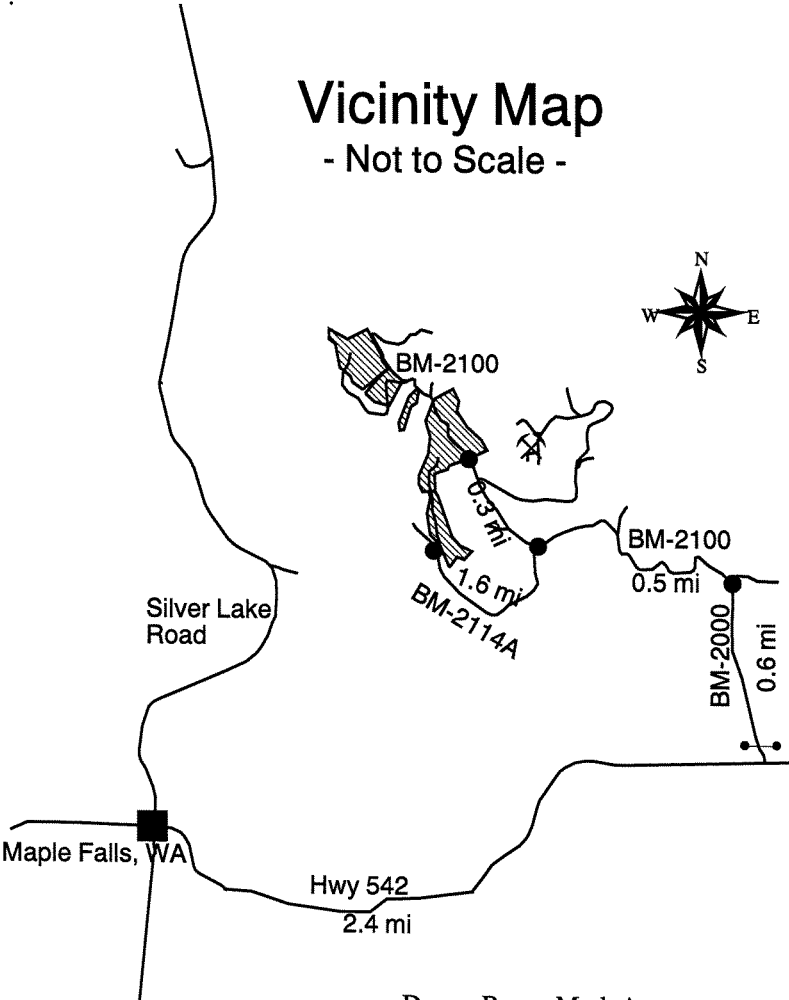
- Type 1-5
- 3** Water Type
- RMZ
- \* Water Type Break

**Symbols**

- ⊗ Rock Pit
- ⬆ Tagged Leave Trees
- ⊕ Landing
- ◆ Monument
- Gate

**Legend**

Vicinity Map  
- Not to Scale -



Drawn By: Mark Arneson  
Date: January 30, 2006

TIMBER NOTICE OF SALE

**SALE NAME:** BEAR POLE

**AGREEMENT NO:** 30-078582

**AUCTION:** August 28, 2006 starting at 10:00 a.m., **COUNTY:** Skagit  
Northwest Region Office, Sedro Woolley, WA

**SALE LOCATION:** Sale located approximately 10 miles Northeast of Arlington.

**PRODUCTS SOLD AND SALE AREA:** 526 poles marked with a band of new orange/red paint, except trees marked with an old band of orange/red paint with an orange/red dot of new paint on the old banded area, bounded by white timber sale boundary tags and property lines, in the Unit; all timber bounded by orange right-of-way tags on part(s) of Sections 18 all in Township 33 North, Range 6 East, W.M., containing 54 acres, more or less.

**NON-POLE VOLUMES AND QUALITY:**

Species	Avg DBH	Ring Count	Total MBF	MBF by Grade								UT
				1P	2P	3P	SM	1S	2S	3S	4S	
Hemlock	18		27						15	10	2	
Red alder	15		11						2	5	4	
Red cedar	17		8							7	1	
Douglas fir	32		8				1		5	1		
Non-Pole Total			54									

**POLE DIAMETER DISTRIBUTION:**

Species	MBF	\$/MBF	DGL/PCS	DGL/PCS	DGL/PCS	DGL/PCS	DGL/PCS
Red cedar	82	\$0.00	11/9	12/67	13/79	14/74	15/62
			16/68	17/59	18/33	19/25	20/27
			21/9	22/10	23/3	26/1	
Pole Total	82						
Sale Total	136						

**MINIMUM BID:** \$60,000.00 **BID METHOD:** Sealed Bids

**PERFORMANCE SECURITY:** \$12,000.00 **SALE TYPE:** Lump Sum

**EXPIRATION DATE:** September 30, 2007 **ALLOCATION:** Export Restricted

**BID DEPOSIT:** \$6,000.00 or Bid Bond. Said deposit shall constitute an opening bid at the appraised price.

**HARVEST METHOD:** Tracked ground based equipment on slopes 25% or less. Falling and Yarding will not be permitted from November 1 to March 31 unless authorized in writing by the Contract Administrator (THIS PERTAINS TO GROUND-BASED EQUIPMENT ONLY) to reduce soil damage and erosion.

**ROADS:** 13.45 stations of optional construction. 13.45 stations of new road to be abandoned if built.

Development of an existing hardrock source (BR-2402-01 Hardrock Pit) at station 6+50 of the BR-2402 Road will involve clearing, stripping, drilling, shooting, and processing rock to generate approximately 10 cubic yards of rip rap and approximately 1,540 cubic yards of 3-inch-minus ballast. This rock is available at no cost on State land in Section 14, Township 33 North, Range 05 East, W.M.

Road construction, abandonment, and the hauling of rock will not be permitted from November 1 to March 31 unless authorized in writing by the Contract Administrator to reduce soil damage and siltation. The hauling of forest products will not be permitted from November 1 to March 31 unless authorized in writing by the Contract Administrator to reduce soil damage and siltation.

**ACREAGE DETERMINATION**

**CRUISE METHOD:** Acres determined by GPS traverse and hand traverse. 60.5 acres gross and 54 acres net. 100% cruise conducted. Expansion factor used is 1. Average groundline d.o.b is 15.4.

**FEES:** \$1,802.00 is due on day of sale. \$9.00 per MBF is due upon removal. These are in addition to the bid price.



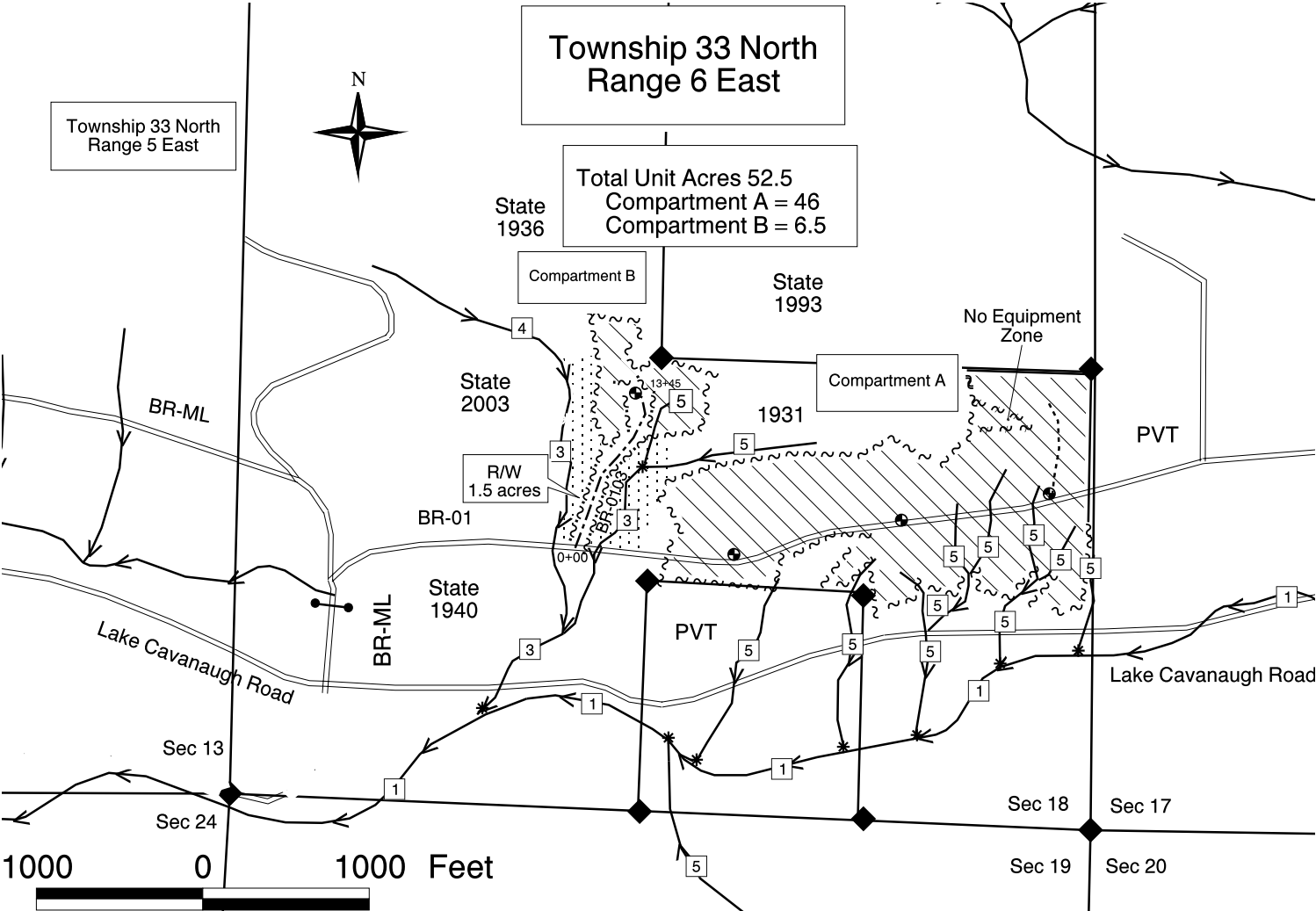
**TIMBER NOTICE OF SALE**

**SPECIAL REMARKS:** (1) Trees marked with blue special management tags can be cut if they are marked with a freshly painted orange band.

(2) 8 poles are located with in the right-of-way and are included in the right-of-way volume only.

TIMBER SALE MAP

SALE NAME:	Bear Pole	REGION:	Northwest
AGREEMENT NO:	30-78582	COUNTY(S):	Skagit
TRUST(S):	State Forest Board Transfer - 01	Elevation:	900 feet



**Symbols**

- Water Type Type 1-5
- Ground-based RMZ
- Survey Corners
- Landing
- Rockpit
- Water Type Break
- Gate

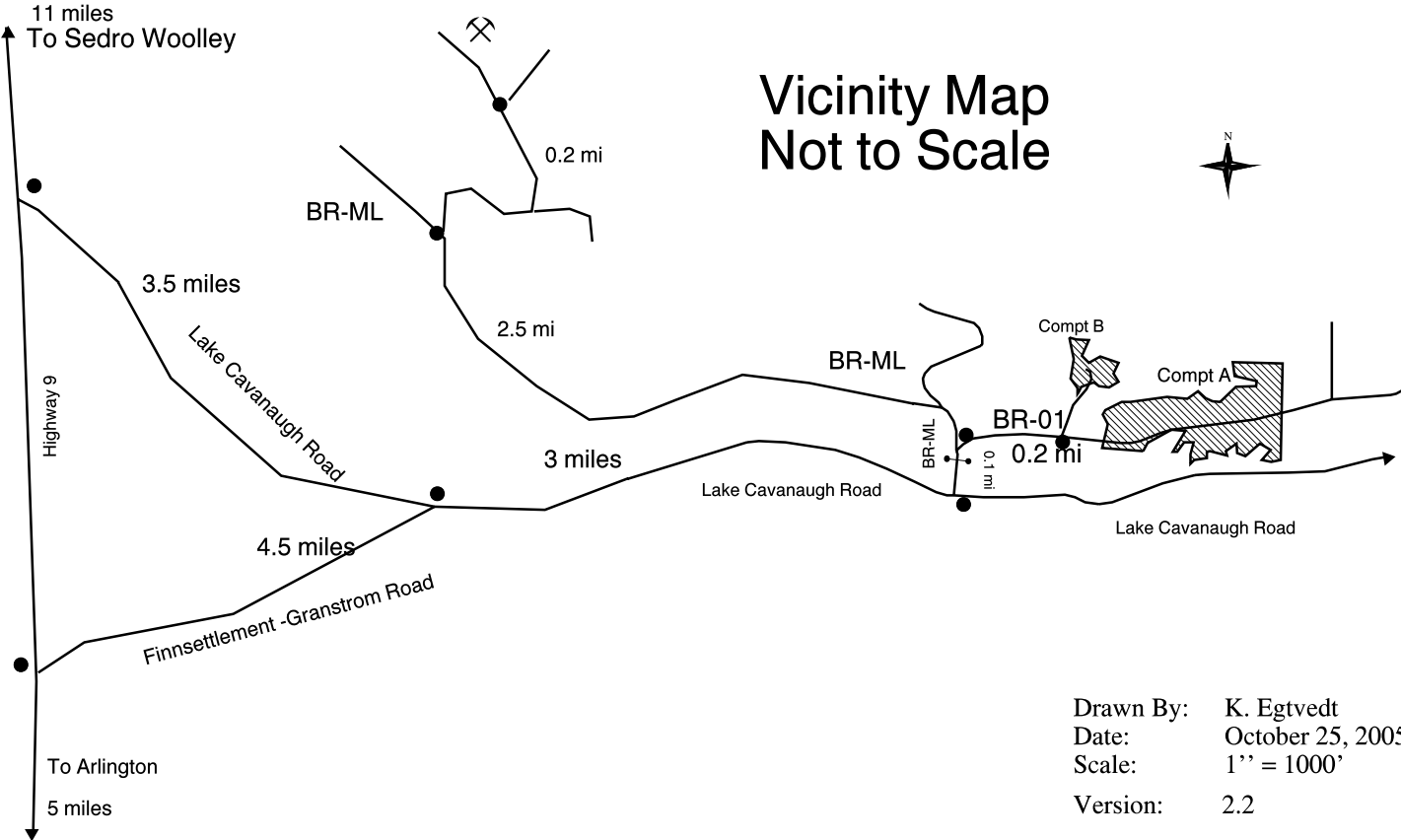
**Legend**

**Roads**

- Optional Construction
- Existing Road
- Designated Skid Trail

**Units**

- Sale Boundary Tags
- Management Unit Bndry Tags
- R/W Boundary Tags
- Logged Area Boundary



Drawn By: K. Egtvedt  
Date: October 25, 2005  
Scale: 1" = 1000'  
Version: 2.2

