

UPDATE on PHB Study Design and Pilot Presentation to the Forest Practices Board

Hans B. Berge

Adaptive Management Program Administrator

and

Dr. Phil Roni

Cramer Fish Sciences and lead author PHB Study

8 August 2018

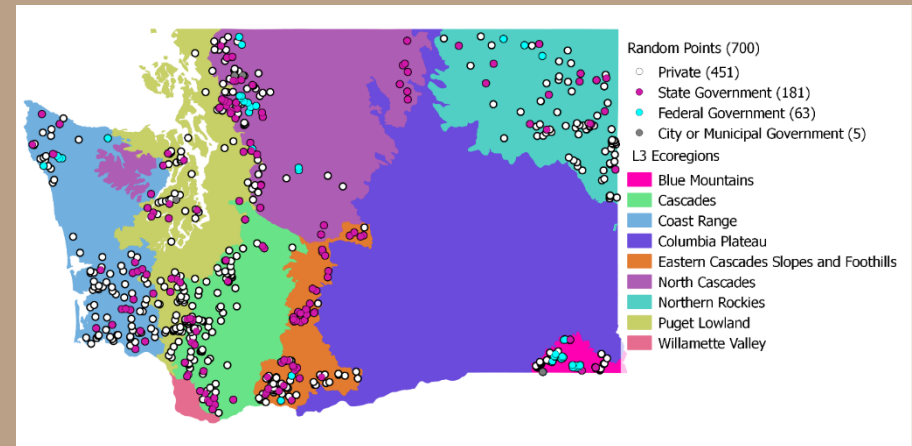


PHB Validation Study Overview

- Requested by the Forest Practices Board in August 2017
- **Purpose:** to validate PHB criteria selected by the Board
- **Approach:** develop study design informed by work of the Science Panel and discussions with stakeholders and the Board
- **Steps:** Pilot study to be completed to inform the sampling methods and refine project costs, and Independent Science Peer-Review of study design
- **Deliverables:** presentation of final study design and results of the pilot study to the Board in November 2018 (with updated budget)
- **Implementation:** study completed across three years (capture inter-annual variability) and 3 protocol sampling seasons (capture intra-annual variability) to inform PHBs used in FHAM
- **Outcome:** final report to the Board in May 2023 following all steps of the Adaptive Management Process outlined in Board Manual 22 (CMER-Policy-Board)

Status of Study Design

- Comments submitted from stakeholders and ISPR
- Revisions incorporated and resubmitted to ISPR
- Comment matrix and revised study design shared with stakeholders
- Revised study design in review at ISPR
- *Expected ISPR approval in September*
- *Presentation to FPB in November*



Status of Pilot

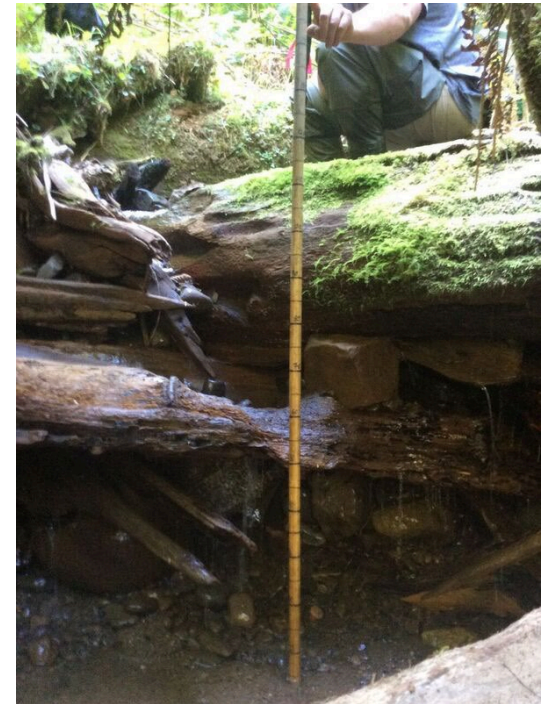
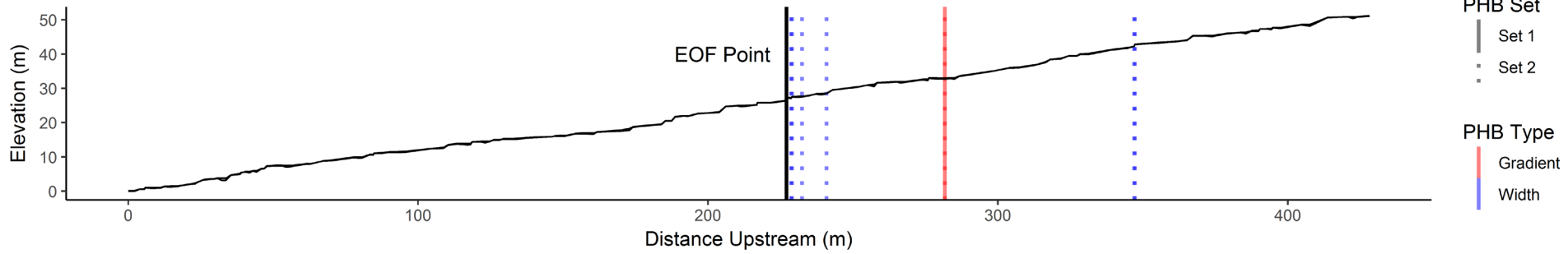
- Pilot study site selection completed for western Washington
- 6 sites sampled to date (Cascades and Olympic Peninsula) and 9 sites this week and next
- Site selection for eastern Washington in progress, working with landowners and Eastside Tribes
- *Sampling expected to be completed by end of August*
- *Analysis and Reporting completed for Board mailing in October*
- *Presentation for Board at November Meeting*



Questions?



Preliminary Results



Preliminary Results – Detailed Data

