

### FORESTRY RIPARIAN EASEMENT PROGRAM

Phone: 360-902-1427  
Email: [frep@dnr.wa.gov](mailto:frep@dnr.wa.gov)  
[dnr.wa.gov/frep](http://dnr.wa.gov/frep)



This program protects riparian areas providing important fish and wildlife habitat. This benefits:

- Stream bank stability
- Floodplain integrity
- Sediment filtration
- Stream temperature
- Leaf litter nutrients, and
- Habitat structure from large woody debris

## Apply Today!

Visit [dnr.wa.gov/frep](http://dnr.wa.gov/frep) to print the application or apply online or request an application by phone or email:  
Phone: 360-902-1427  
Email: [FREP@dnr.wa.gov](mailto:FREP@dnr.wa.gov)

SCAN ME



## Learn More

Learn more about small forest landowner assistance at:  
[dnr.wa.gov/landownerassistanceportal](http://dnr.wa.gov/landownerassistanceportal)



PRINTED ON RECYCLED PAPER. DNR COMMUNICATIONS 7/24



## Forestry Riparian Easement Program

A Compensation Program that Pays Landowners for Timber Required to be Left Unharvested

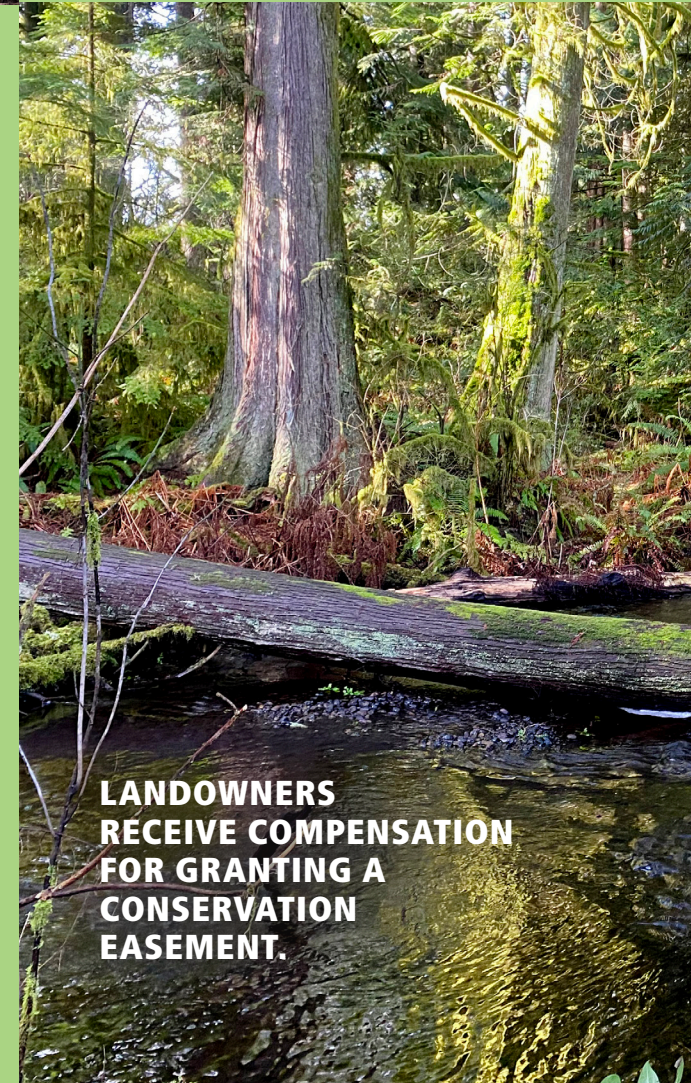
## Trees Left After a Harvest Can Provide Ecological and Economic Value

Washington's Forests and Fish Rules require trees to be left to protect riparian habitat. The Forestry Riparian Easement Program (FREP) is a voluntary program that pays eligible landowners for 90% of the value of these trees.

Trees left post harvest in required buffers on streams, wetlands, lakes, ponds, or unstable slopes can qualify for FREP.

Qualifying trees are inventoried and measured (timber cruised) to help determine the easement value.

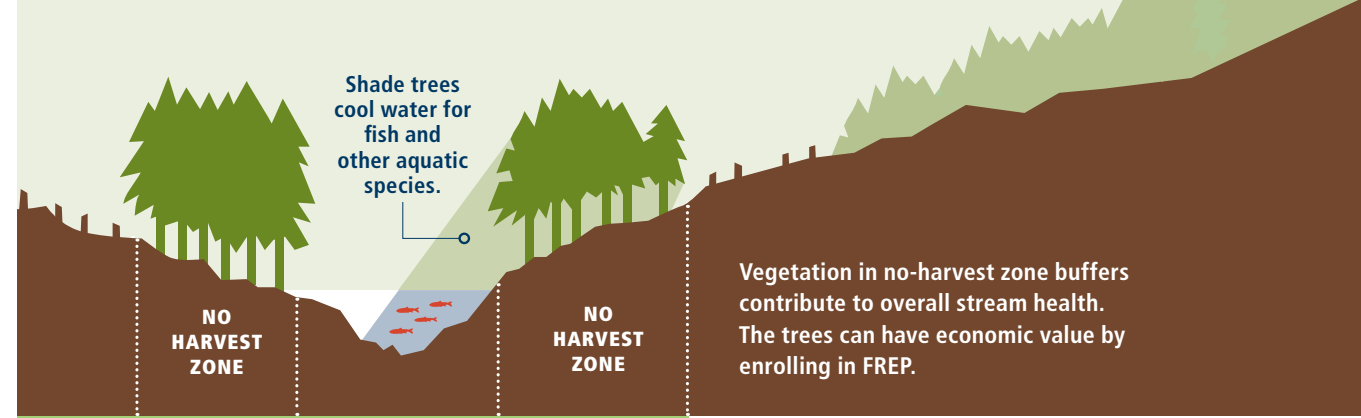
Landowners receive compensation for granting a conservation easement. The easement is on the trees only and does not provide public access to your land.



**LANDOWNERS RECEIVE COMPENSATION FOR GRANTING A CONSERVATION EASEMENT.**

“ FREP compensates small forest landowners like us for trees left to protect essential riparian areas. We have found FREP to be family forestry friendly, and the program fits well into our sustainable, intergenerational forest management plan.”

THE BOYER FAMILY, Small Forest Landowners



## Who's Eligible for the Program?

YOU MAY QUALIFY IF YOU ARE A SMALL FOREST LANDOWNER, AND:

- A** You harvest less than 2 million board feet of timber on average, per year,
- B** Your harvest does not convert the qualifying land to a use incompatible with forestry
- C** Have completed a harvest\* and left a buffer of trees next to a stream, river, wetland, lake, pond, or adjacent unstable slopes
- D** You are an individual, partnership, corporation, or other nongovernmental for-profit legal entity
- E** You own either a parcel larger than 20 contiguous acres or more than 80 forested acres in Washington State

\*You may still be eligible if your harvest is not possible due to Forest Practices Rules.

## How Does the Program Work?

- 1 Submit a Forest Practices Application before the harvest begins
- 2 Complete harvest
- 3 Submit FREP Application
- 4 DNR determines the value of the easement based on the value of the trees left in the riparian buffer
- 5 When funding becomes available, the acquisition process begins
- 6 Compensation is paid in one lump sum for a 40-year conservation easement on the qualifying timber

## Questions?

Contact the Conservation Easement Program Manager at:  
360-902-1427,  
frep@dnr.wa.gov

More details are available at:  
dnr.wa.gov/frep