

“

VERY SATISFIED. THE NEW BRIDGE IS FANTASTIC AND LOOKS GREAT! THERE ARE ALREADY FISH SWIMMING IN THE POOLS BELOW THE STRUCTURE.”

WAYNE GOMBOTZ
LANDOWNER

ROAD TO RECOVERY

The Family Forest Fish Passage Program is implemented by three state agencies: Department of Fish and Wildlife, Department of Natural Resources, and the Recreation and Conservation Office. Each agency brings its expertise to oversee the program's operations, outreach, and project selection processes. A steering committee approves annual projects and keeps procedures current. The Washington Farm Forestry Association is an active member of the steering committee as a landowner organization.

The Family Forest Fish Passage Program recognizes the critical role that small family forest landowners play in restoring salmon and trout populations. It also recognizes the important economic benefits that small forest landowners provide Washington's economy.

The Family Forest Fish Passage Program benefits include:

- Creating jobs and economic opportunities in rural communities.
- Honoring and implementing Indian treaty fishing rights.
- Sustaining our forest industry and encouraging renewable green products.
- Improving water quality by reducing the amount of sediment entering streams and spawning areas.
- Minimizing flooding and the downstream harm to habitat and property.
- Helping implement salmon recovery plans.

Local Groups are the Cornerstone to the Program

Most Family Forest Fish Passage Program projects are completed by local groups or sponsors experienced in fish passage corrections. These sponsors manage project design, construction oversight, permitting, billing, and grant management. A sponsor may be a conservation district, regional fisheries enhancement group, local fish-related nonprofit organization, tribe, or other interested organization.

PROJECT SPONSORS

COUNTY CONSERVATION DISTRICTS

Asotin, Cascadia, Clallam, Clark, Cowlitz, East Klickitat, Ferry, Grays Harbor, Jefferson, King, Kitsap, Kittitas, Lewis, Mason, Okanogan, Pacific, Pend Oreille, Skagit, Snohomish, Spokane, Stevens, Thurston, Underwood, Wahkiakum.

FISHERIES ENHANCEMENT GROUPS

Adopt-a-Stream
Cascade Columbia Fisheries Enhancement Group
Chehalis Basin Fisheries Task Force
Hood Canal Salmon Enhancement Group
Kittitas Conservation Trust
Lower Columbia Fish Enhancement Group
Methow Salmon Recovery Foundation
Mid-Sound Salmon Enhancement Group
Nooksack Salmon Enhancement Group
North Olympic Salmon Coalition
Pacific Coast Salmon Coalition
Pacific County Anglers Skagit Fisheries Enhancement Group
South Puget Sound Salmon Enhancement Group
Sound Salmon Solutions
Stilly-Snohomish Task Force
Tri-State Steelheaders
Wild Fish Conservancy
Willapa Bay Fisheries Enhancement Group

COUNTIES

Chelan County Department of Natural Resources

TRIBES

Confederated Tribes of the Colville Reservation
Confederated Tribes and Bands of the Yakama Nation
Cowlitz Indian Tribe
Kalispel Tribe of Indians
Lower Elwha Klallam Tribe
Nooksack Indian Tribe
Spokane Tribe of Indians
Stillaguamish Tribe of Indians
Tulalip Tribes

Get More Information

Visit our website:
www.dnr.wa.gov/fffpp

Program Partners

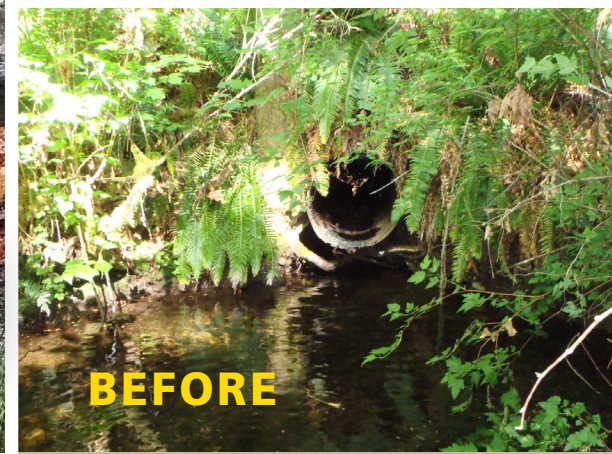
PROGRAM ADMINISTRATION
Department of Natural Resources Small Forest Landowner Office
PO Box 47012
Olympia, WA 98504-7012
360-902-1404
www.dnr.wa.gov/sflo

PROJECT EVALUATION & RANKING
Department of Fish and Wildlife Habitat Program
600 Capitol Way
Olympia, WA 98501-1091
360-902-2352
TTY: 360-902-2207
www.wdfw.wa.gov

PROGRAM FUNDING
Recreation and Conservation Office
PO Box 40917
Olympia, WA 98504-0917
360-902-3000
www.rco.wa.gov

LANDOWNER ORGANIZATION
Washington Farm Forestry Association
PO Box 1010
Chehalis, WA 98532
Contact: Sam Comstock
360-736-5750
www.wafarmforestry.com

The above agencies are responsible for implementing the program. The Washington Farm Forestry Association joins the agencies on a steering committee.



Family Forest Fish Passage Program

2017 IMPLEMENTATION REPORT



Washington
Department of
**FISH and
WILDLIFE**



WASHINGTON STATE
Recreation and
Conservation Office



WASHINGTON STATE DEPT OF
**NATURAL
RESOURCES**

A Cost-Share
Program for Small
Forest Landowners
to Improve Fish
Passage



Investment in Removal of Fish Barriers Pays Many Dividends



Small woodland owners own 3.2 million acres of Washington's

forests—about half of the private forestland in the state. Their income contributes to Washington State's annual \$16 billion forestry economy and helps sustain many rural communities. At the same time, these family forests provide cold, clean water to thousands of miles of fish-bearing streams. Crossing those streams, in many cases, are roads.

With the 1999 Forests and Fish rules, new regulations were established that required all forest landowners to remove fish barriers on streams associated with forest road crossings. To small forest landowners, the cost can be substantial and, potentially, influence their decisions about converting their forestlands to other uses. Recognizing these potential impacts, the 2003 Washington State Legislature created the Family Forest

Fish Passage Program to help reduce the regulatory and monetary burdens on small family forest landowners and to restore habitat for fish.

Responsible owners of small woodlands and forests have been working with the State to take action. Since 2003, the program has paid dividends: 910 miles of fish habitat have been reconnected and 385 fish barriers have been eliminated. It is estimated that for every \$100,000 invested in fish passage projects, 1.57 local jobs are created during the construction season. This estimate does not include the additional indirect jobs created such as manufacturing culverts and bridges. Thanks to a new round of funding from the Legislature, the program is poised to do a lot more.

385

FISH BARRIERS HAVE BEEN ELIMINATED SINCE 2003

910 miles

OF FISH HABITAT HAVE BEEN RECONNECTED SINCE 2003

“DNR TOOK A POTENTIALLY DEVASTATING SITUATION FOR A SMALL FOREST LANDOWNER AND CONVERTED IT INTO A LONG TERM FIX.”

GREG & DEBBIE BINDER
LANDOWNERS

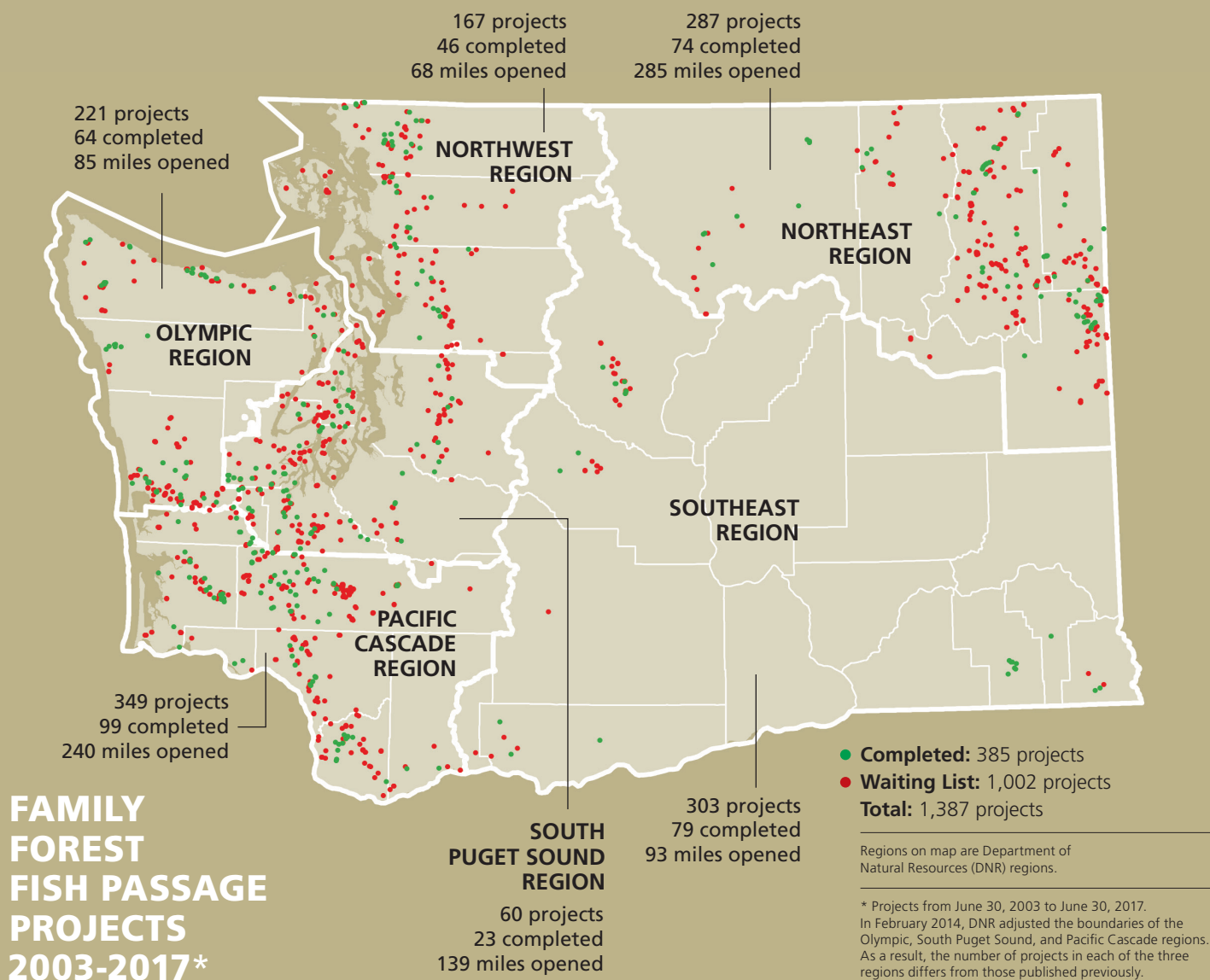


BEFORE



AFTER

Wulf Project,
Stevens County



 dnr.wa.gov/ffpp

Video Highlights Program Benefits

A continued outreach effort to locate the highest quality projects is a key to the success of the Family Forest Fish Passage Program. To assist with outreach, the program created an informational video showcasing the benefits to landowners, fish and rural communities. This video is a tool to educate and inform landowners, provide information to the public and help promote the program.

Watch the video online at: www.dnr.wa.gov/ffpp