



WASHINGTON STATE DEPARTMENT OF
Natural Resources

Peter Goldmark - Commissioner of Public Lands

Sustainable Harvest Calculation

For Forested State Trust Lands
A Report to the
Board of Natural Resources

Kyle Blum and Angus Brodie
December 2014



Sustainable Harvest Calculation

- February - July
 - 2004 and 2007 calculations
 - Reviewed RCW's, Policy
 - Review of past decade performance
 - Arrearage
 - Key modeling assumptions
- This Month
 - Scoping



Sustainable Harvest Calculation Major Project Phases

State Environmental Policy Act (SEPA):

- Conduct Scoping
- Issue Draft EIS for Review and Public Comment
- Publish Final EIS



Sustainable Harvest Calculation Scoping



Sustainable Harvest Calculation Scoping

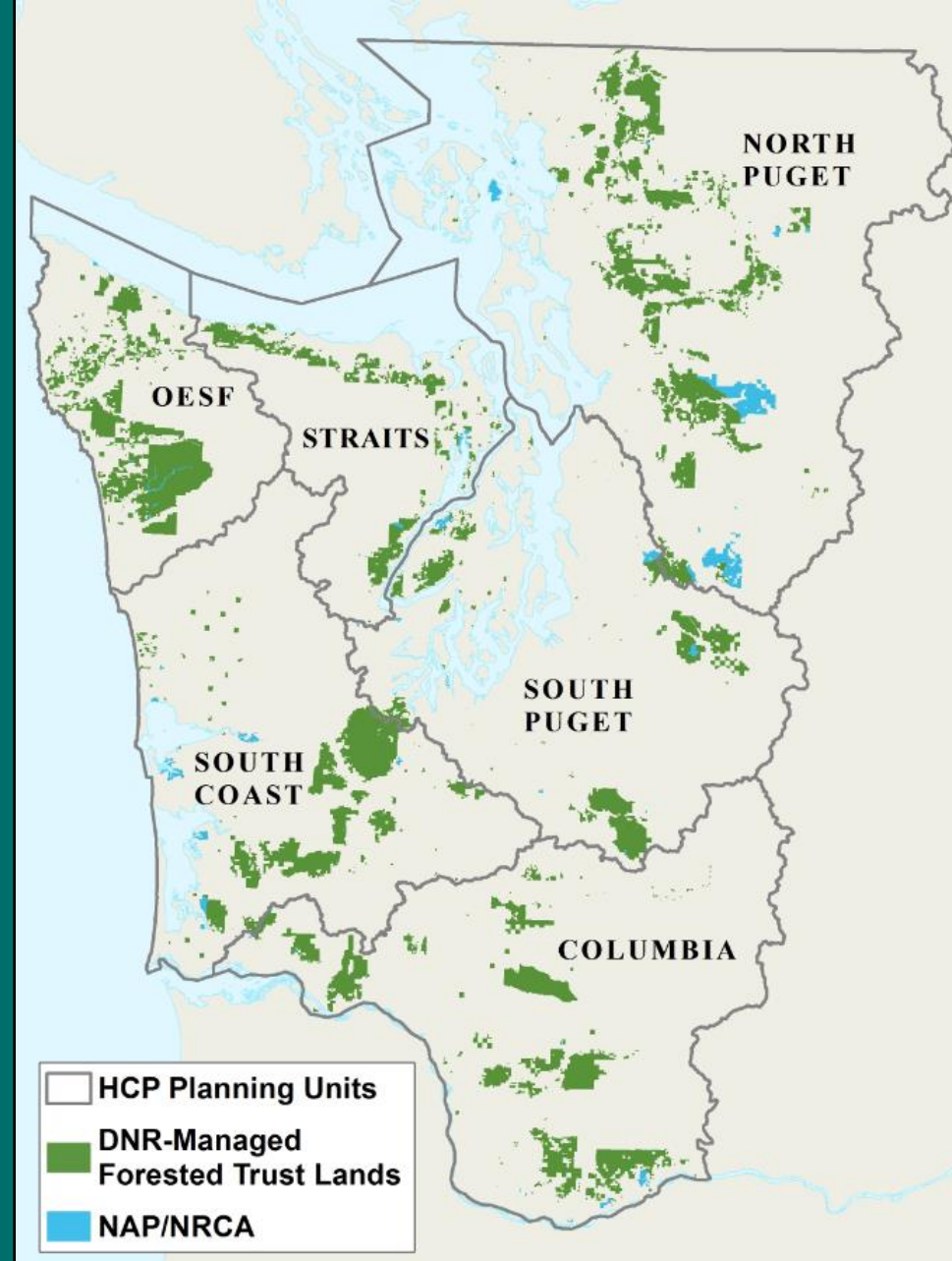
- SEPA

“...purpose of scoping is to narrow the focus of the EIS to significant environmental issues, to eliminate insignificant impacts from detailed study, and to identify alternatives to be analyzed in the EIS.”



Sustainable Harvest Calculation Proposal

- The proposal is to establish a sustainable harvest level for the 2015 to 2024 planning decade for forested state trust land in western Washington.



Sustainable Harvest Calculation Scoping: Need

- DNR needs to calculate a new sustainable harvest level and determine the best course of action regarding the arrearage consistent with state law and DNR policy.



Sustainable Harvest Calculation

Scoping: Need

The final selected alternative for the 2015 to 2024 sustainable harvest level is expected to meet the following:

- RCW 79.10.320: Sustainable harvest program.
- RCW 79.10.330: Arrearage – End of the decade.
- The 2006 *Policy for Sustainable Forests*;
- The 1997 *Habitat Conservation Plan*;
- Applicable forest practices rules (Title 222 WAC);
and
- All other applicable state and federal regulations.



Sustainable Harvest Calculation

Scoping: Purpose

Analyze and Incorporate:

- Marbled Murrelet
Long-term Conservation Strategy
- Arrearage
- New Information



Sustainable Harvest Calculation

Next Steps

- BNR Approval for Need, Purpose
- Scoping Comment Period





WASHINGTON STATE DEPARTMENT OF
Natural Resources

Peter Goldmark - Commissioner of Public Lands