



Sullivan Creek Trespass

Direct Transfer

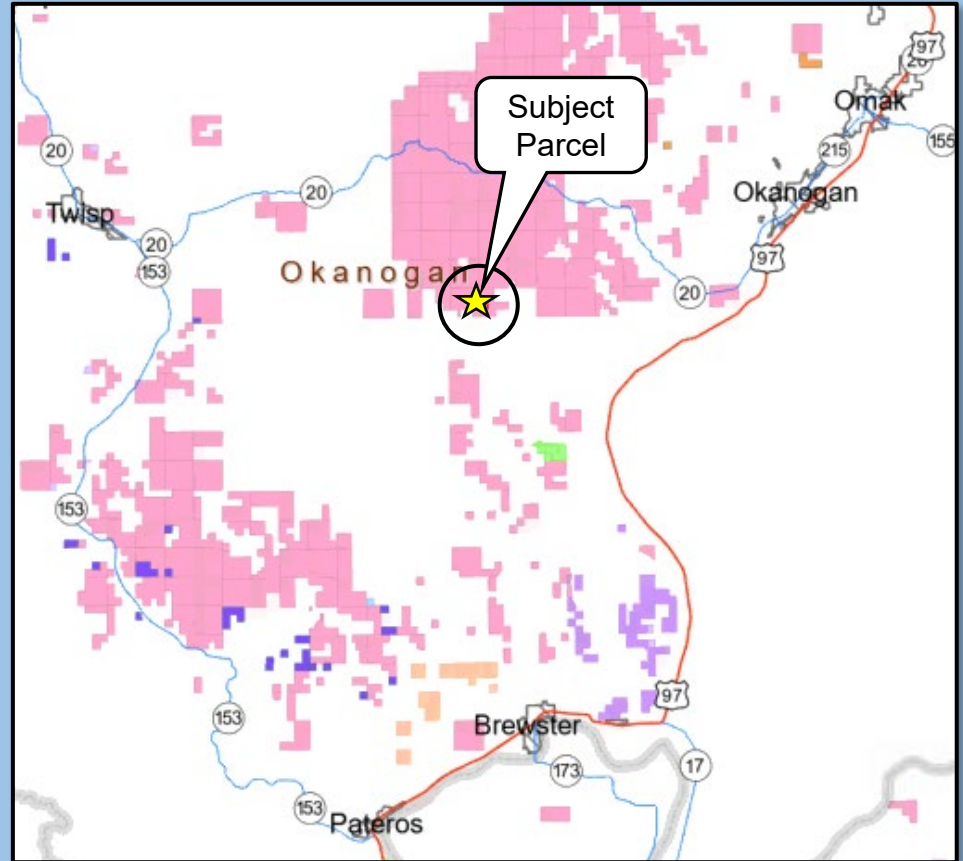
Okanogan County



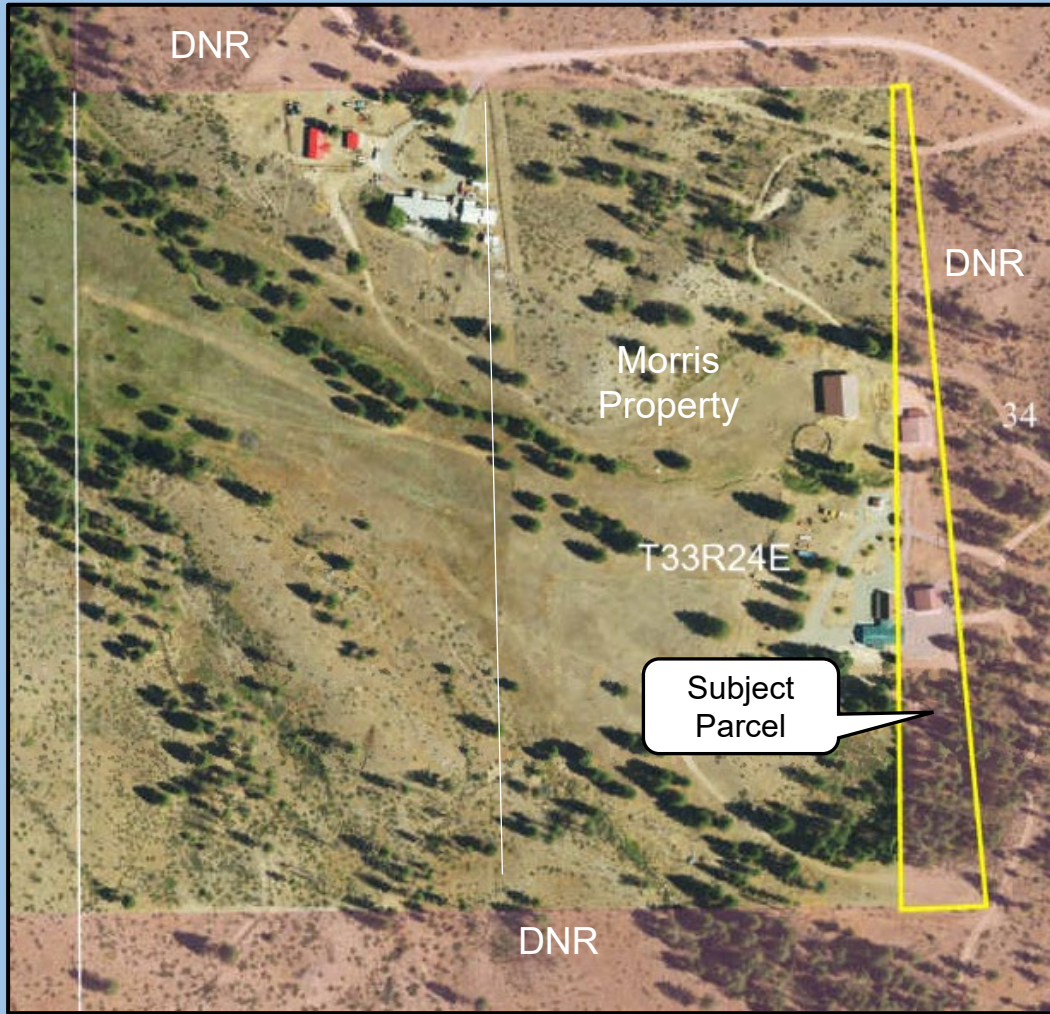
Sullivan Creek Trespass

Location

- 14 miles SE of Twisp
- 13 miles SW of Omak
- Okanogan County
- Common School Trust (03)



Sullivan Creek Trespass



Property

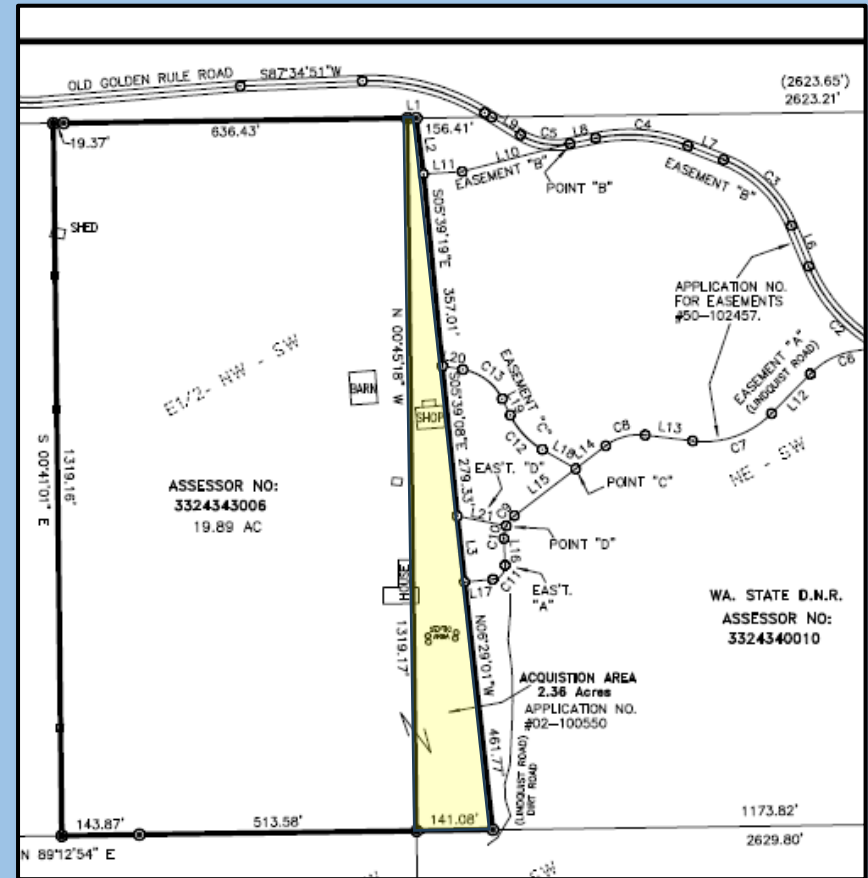
- 2.36 acres
- Proposed direct transfer to Ronald & Sandy Morris
- RCW 79.17.200(2)(c) provides for a direct transfer without a public action to resolve trespass and property ownership disputes.



Sullivan Creek Trespass

Trespass

- Includes a fence, portions of Purchaser's house, shop, agricultural garage, shed and septic area.
- Purchasers acquired their property in 2002.
- Portion of house, garden shed, and fence were built in the 1970s.
- House was expanded in 2008.



Sullivan Creek Trespass



Facing south from center of trespass parcel – all on trespass parcel

**Appraised
Value:**

\$14,000



Eastern portion of house on left & center and entire garage/shop on trespass parcel

*Photos taken by Appraiser Paul Zemtseff, The Eastman Company

- ❖ Purchaser paid administrative costs toward the completion this transfer.



Sullivan Creek Trespass

Benefits

- Resolves a trespass on Common School Trust land
- Establishes a manageable boundary between State and private ownership.
- The proceeds will be used to purchase replacement land for the Common School Trust.



Sullivan Creek Trespass

Resolution 1642

Questions?



