

W. SIEBERT CREEK

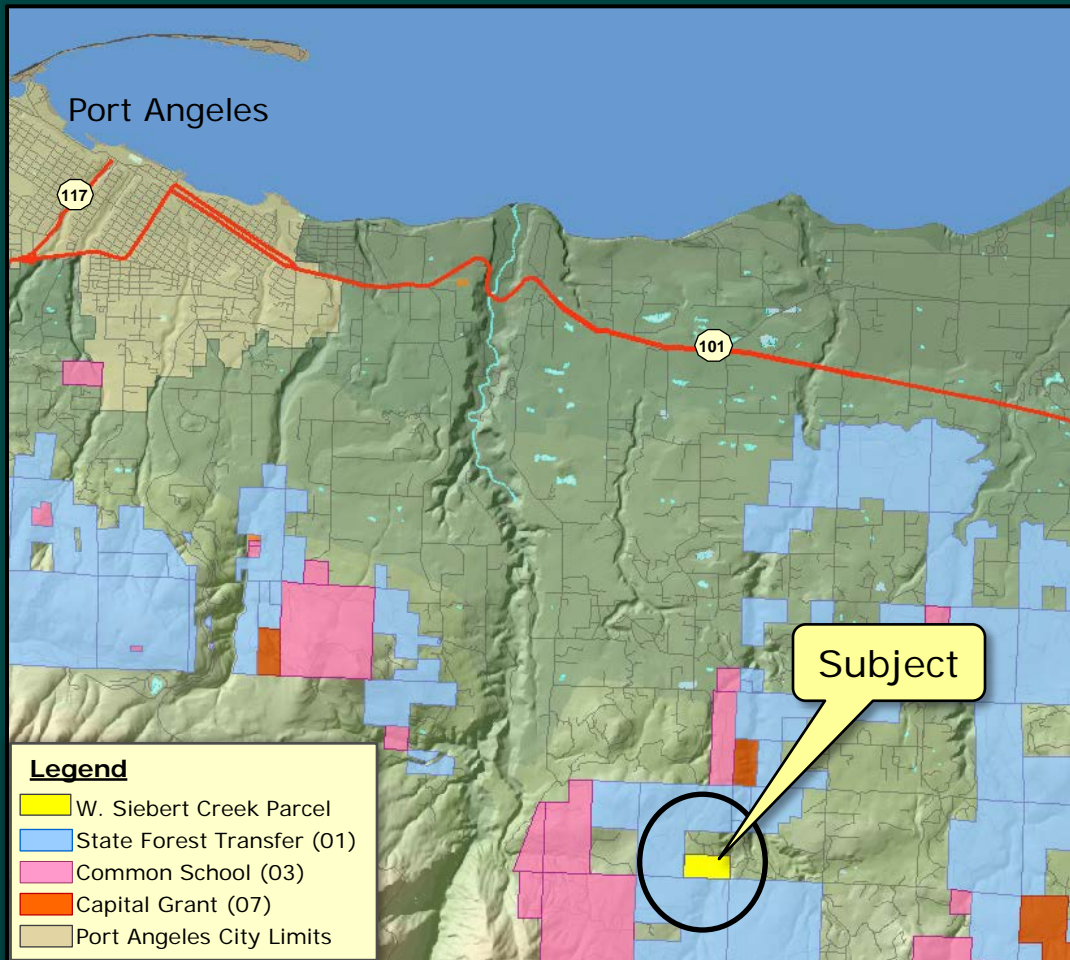
No. 08-091146

Proposed Acquisition

Clallam County



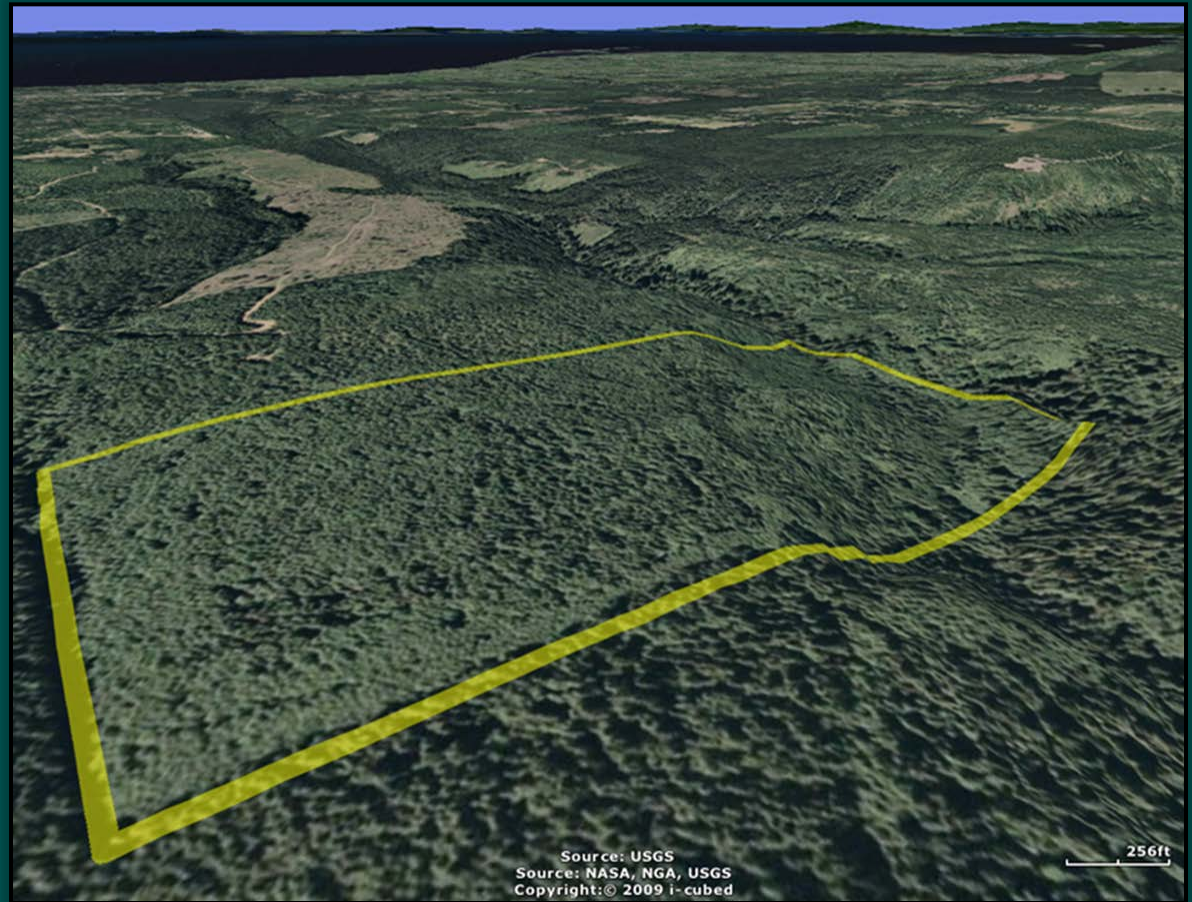
W. Siebert Creek Purchase



- ▶ 79.52 Acres
- ▶ 8 miles Southeast of Port Angeles
- ▶ In-holding to DNR managed Maletti Block
- ▶ Zoned Commercial Forest

W. Siebert Creek Purchase

- ▶ 51 acres harvestable
- ▶ 29 acres RMZ, roads
- ▶ Site class III
- ▶ 32-year old
 - Red Alder
 - Douglas-fir
 - Western Hemlock



W. Siebert Creek Purchase

- ▶ Has legal access
- ▶ Common School trust
- ▶ Purchase Price:
\$250,000
(\$3,144/acre)



W. Siebert Creek Purchase

Trust Benefits

- ▶ Blocks up Trust ownership
- ▶ Contributes to timber asset base
- ▶ Provides future income for the Trust



W. Siebert Creek Purchase

Resolution 1428

