



Board of Natural Resources

Product Sales & Leasing Division

Product Sales Program

June 4, 2024



Agenda

- May 2024 Results
- Fiscal Year 2024 Update
- Fiscal Year 2025 Preview
- Current Proposed Sales (Action Item)



May 2024 Results

SALES OFFERED

- 4 sales
- 11.8 mmbf
- \$1.7 million
- \$148/mbf

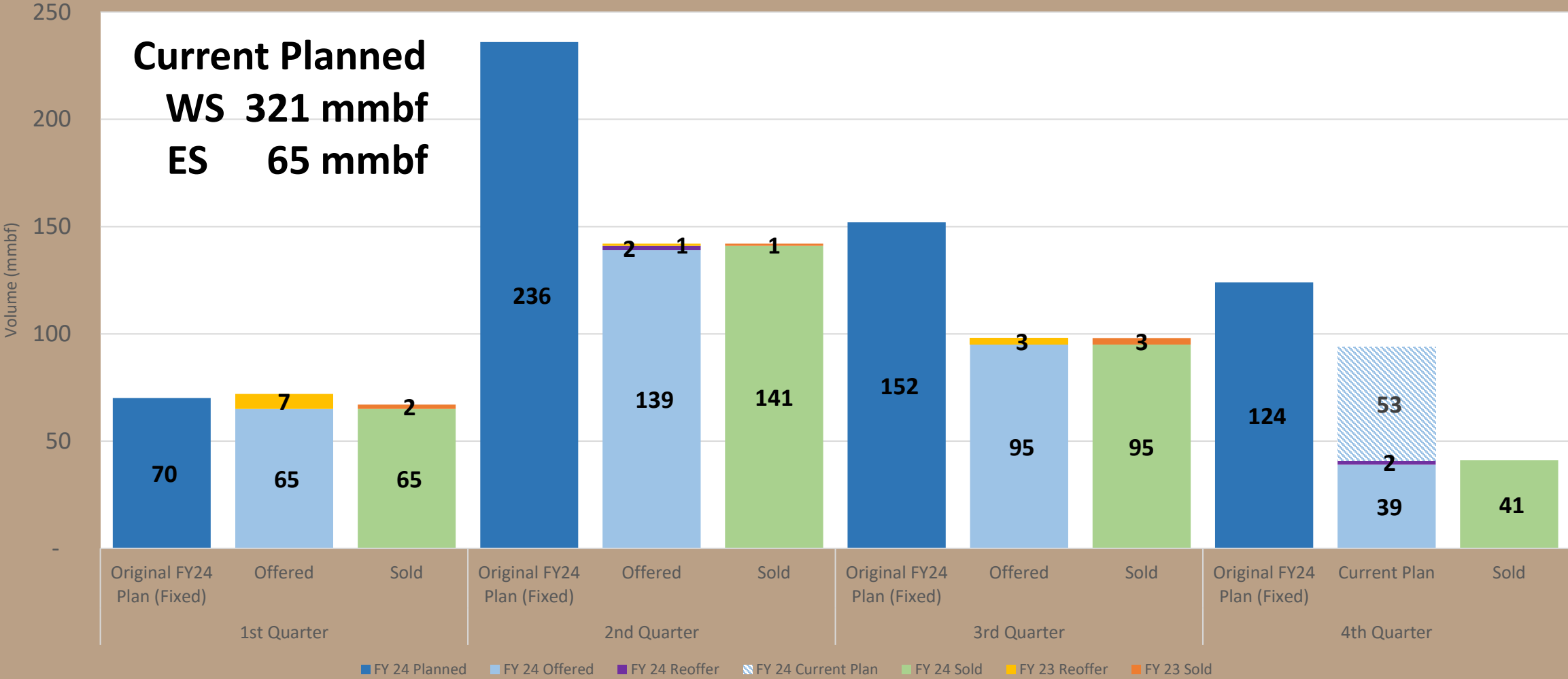
SALES SOLD

- 4 sales
- 11.8 mmbf
- \$2.7 million
- \$231/mbf
- Avg Bids: 2.25



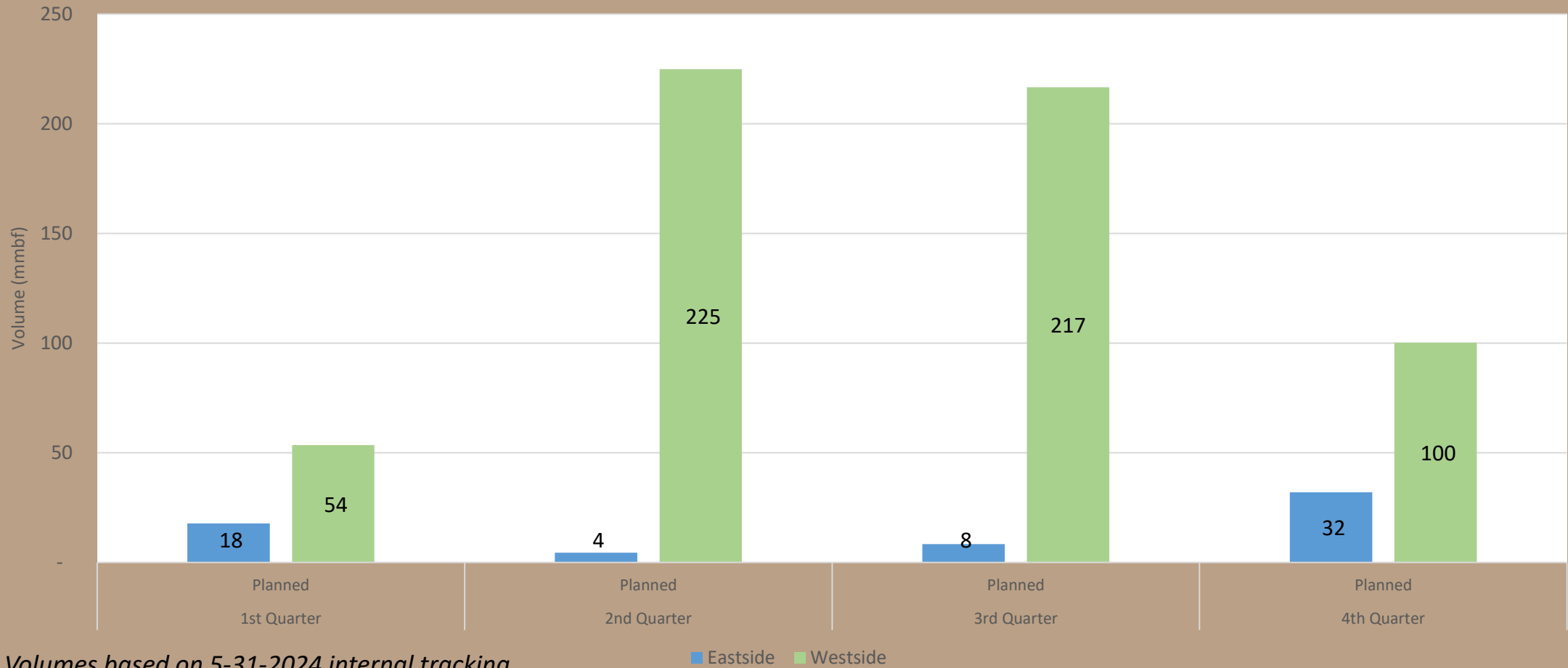
Fiscal Year 2024 Update

DNR FY 24 Timber Sales



Looking ahead to FY 2025

FY 2025 Outlook



Planned Volumes based on 5-31-2024 internal tracking



Current Proposed Sales

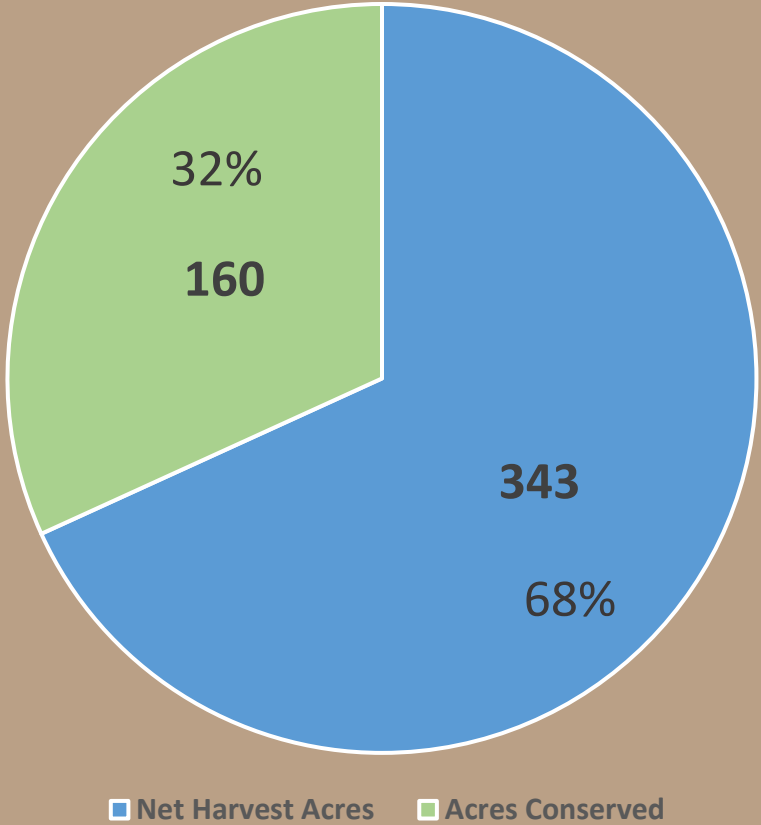
Total Proposal

- 5 sales
- 20.1 mmbf
- \$6.7 million
- \$335/mbf



Current Proposed Sales

Westside Sale Proposal Acreages



Pistol Pete Sorts TIMBER SALE 30-104814

Conservation Facts

Original planned area: **240 acres**

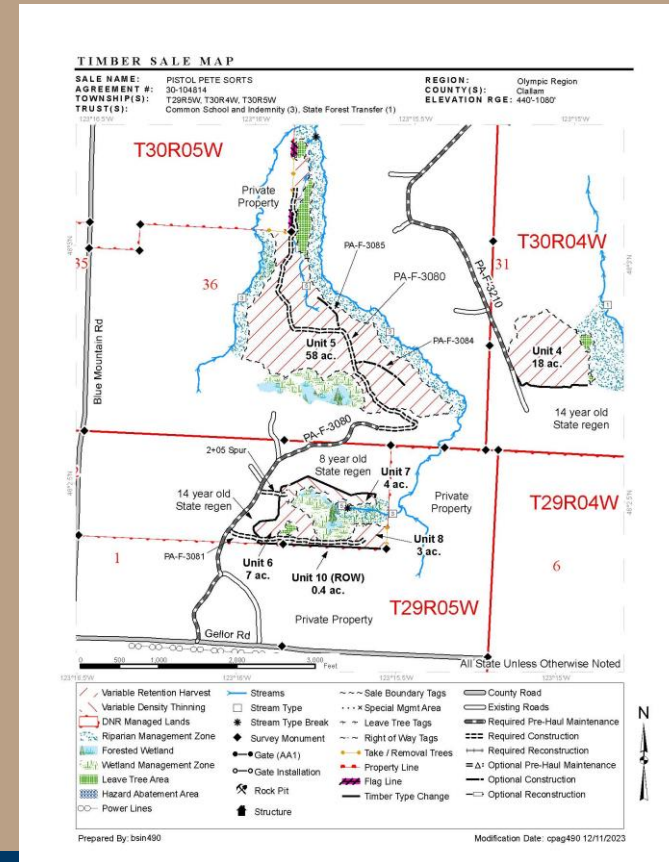
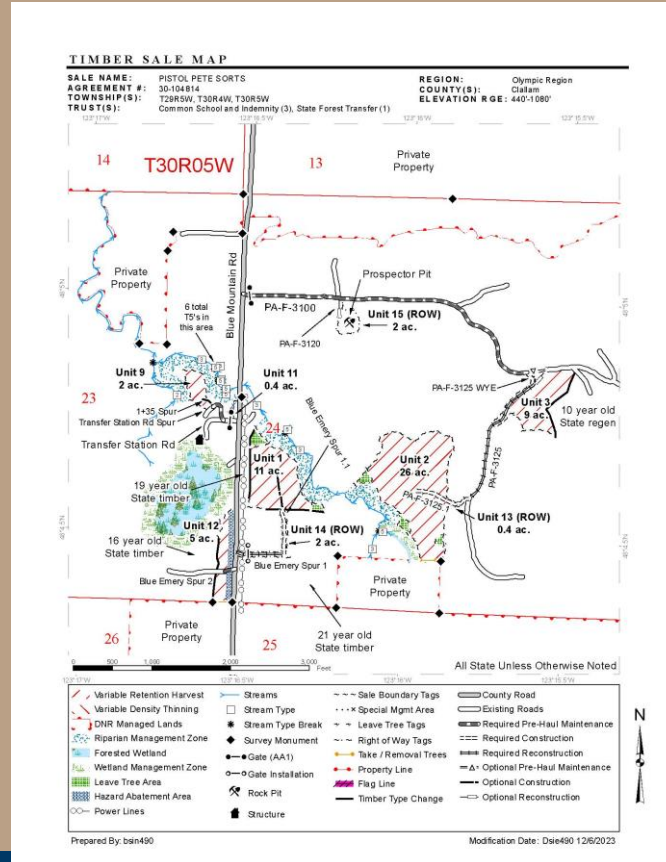
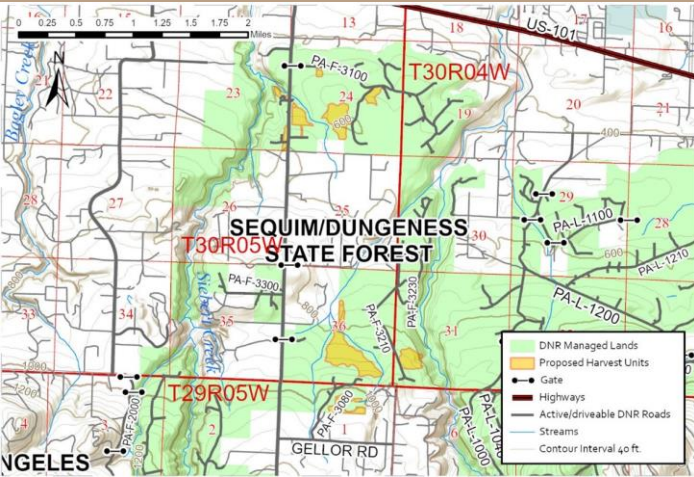
Final harvest area: **149 acres**

Conserved area: **91 acres**

Percent contributed to Long-term forest cover: **38%**

Certifications

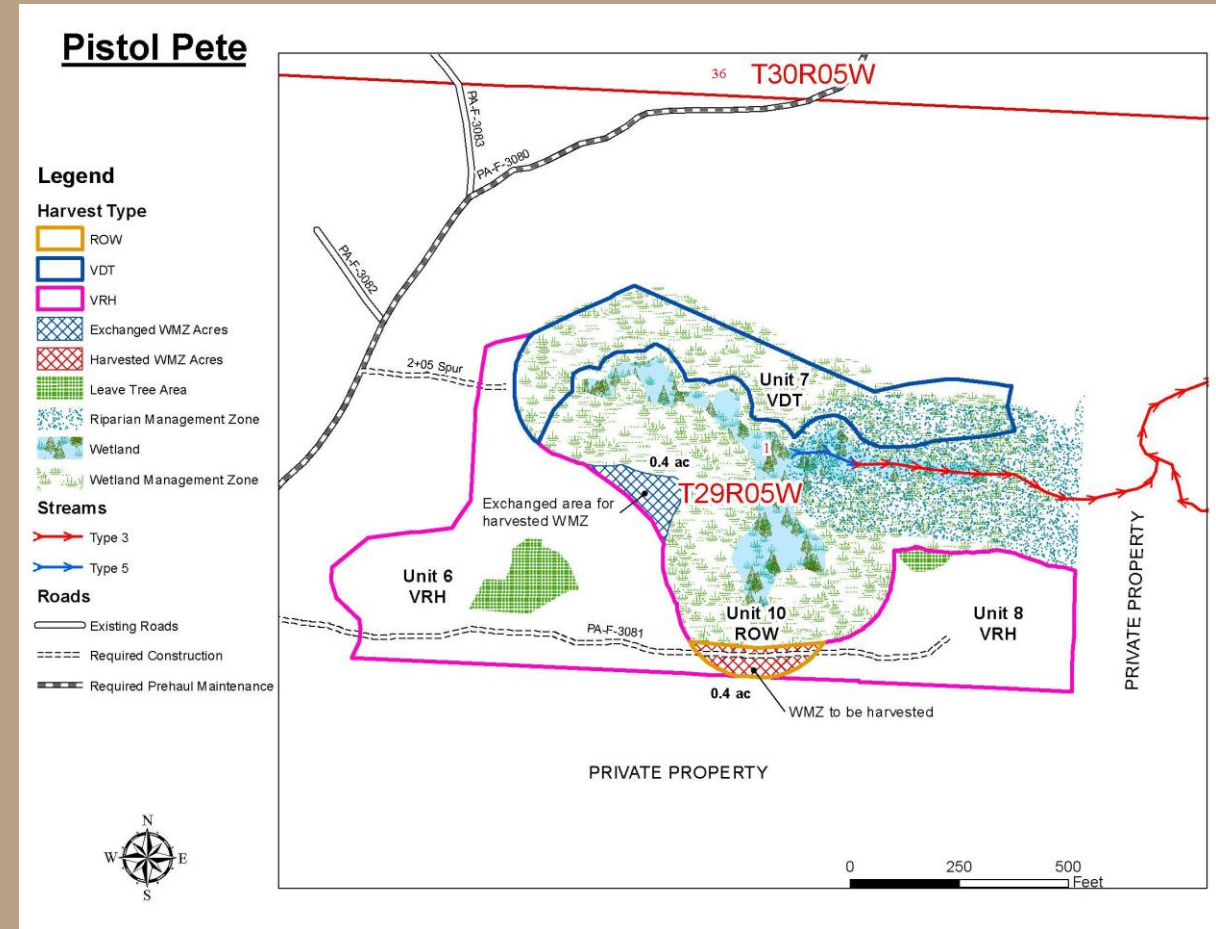
Sustainable Forestry Initiative



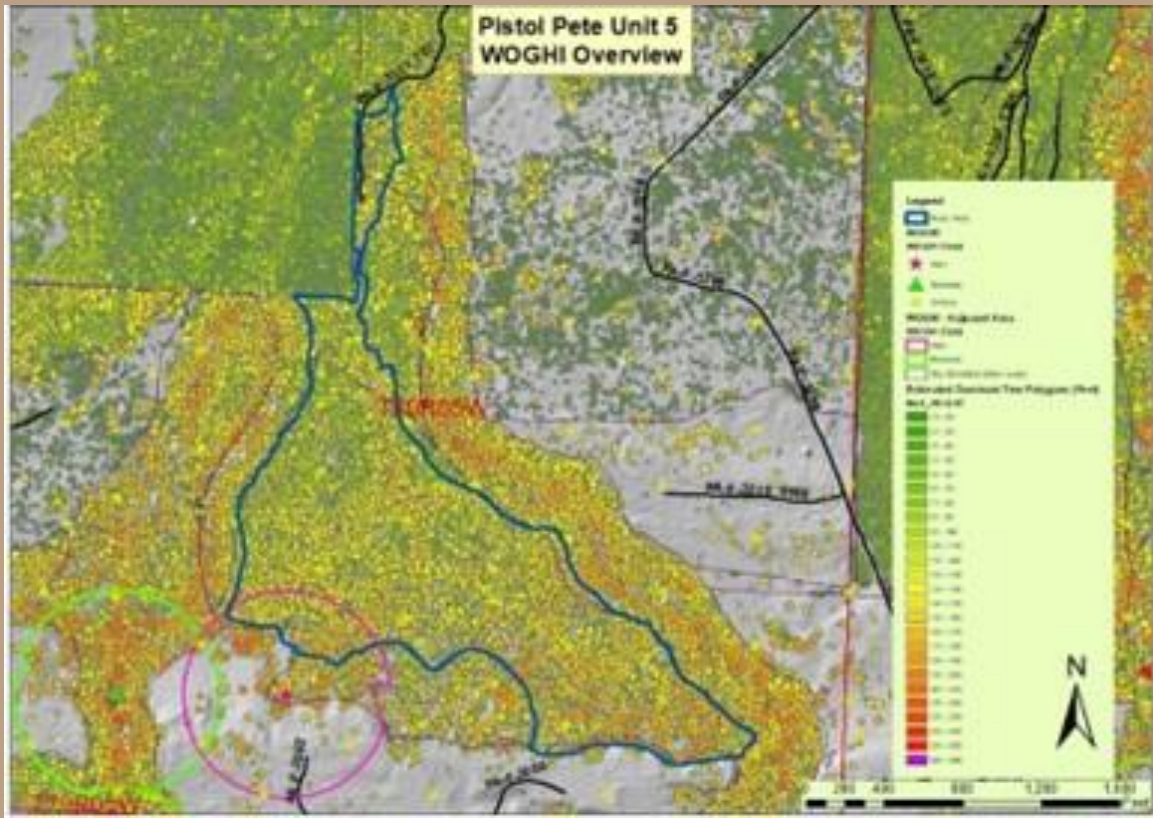
Pistol Pete Sorts TIMBER SALE 30-104814

Notable Protected Features:

- FP rule-identified landforms/potentially unstable slopes
- Riparian and wetlands & management zones
- Remnant old growth identified and protected



Pistol Pete Sorts TIMBER SALE 30-104814



Stilly Revisited TIMBER SALE 30-093860

Conservation Facts

Original planned area: **200 acres**

Final harvest area: **152 acres**

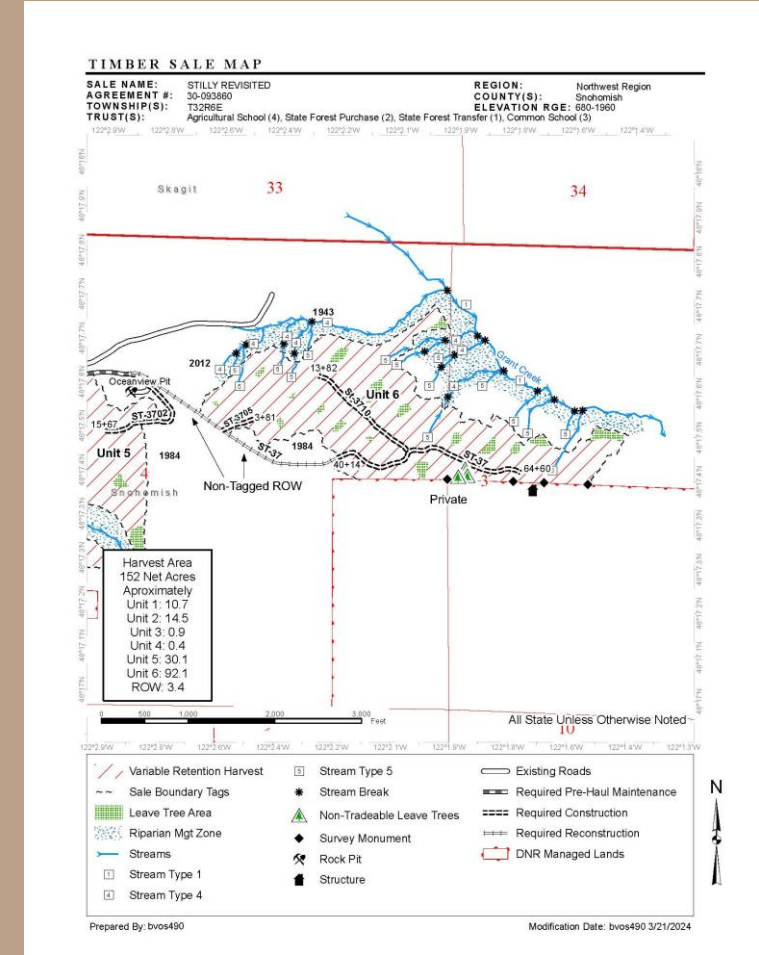
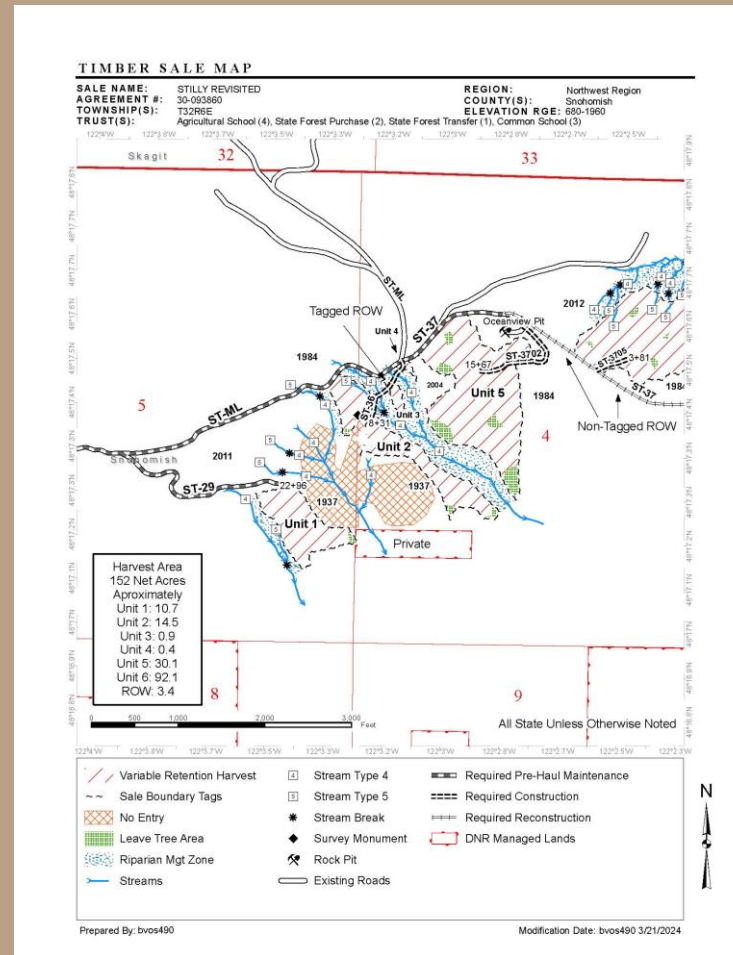
Conserved area: **48 acres**

Percent contributed to Long-term forest cover: **24%**



Certifications

Sustainable Forestry Initiative



Stilly Revisited TIMBER SALE 30-093860

Notable Protected Features:

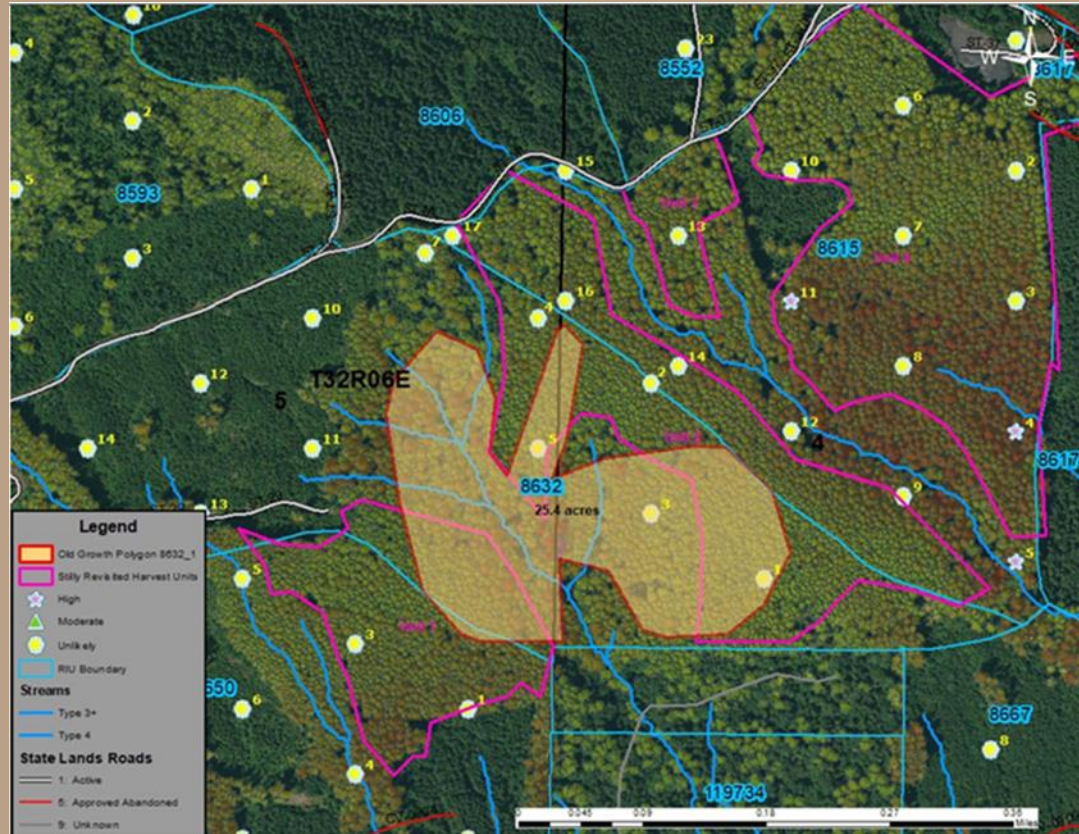
- FP rule-identified landforms
- Riparian management zones
- Remnant old growth identified and protected

Expert & Tribal Partner Review:

- Licensed Engineering Geologist Evaluation
- On-site evaluation by Timber, Fish, and Wildlife Cooperators: WDFW, ECY, representatives from the Stillaguamish and Tulalip Tribes



Stilly Revisited TIMBER SALE 30-093860



Lickety Split Sorts TIMBER SALE 30-106665

Conservation Facts

Original planned area: **63 acres**

Final harvest area: **42 acres**

Conserved area: **21 acres**

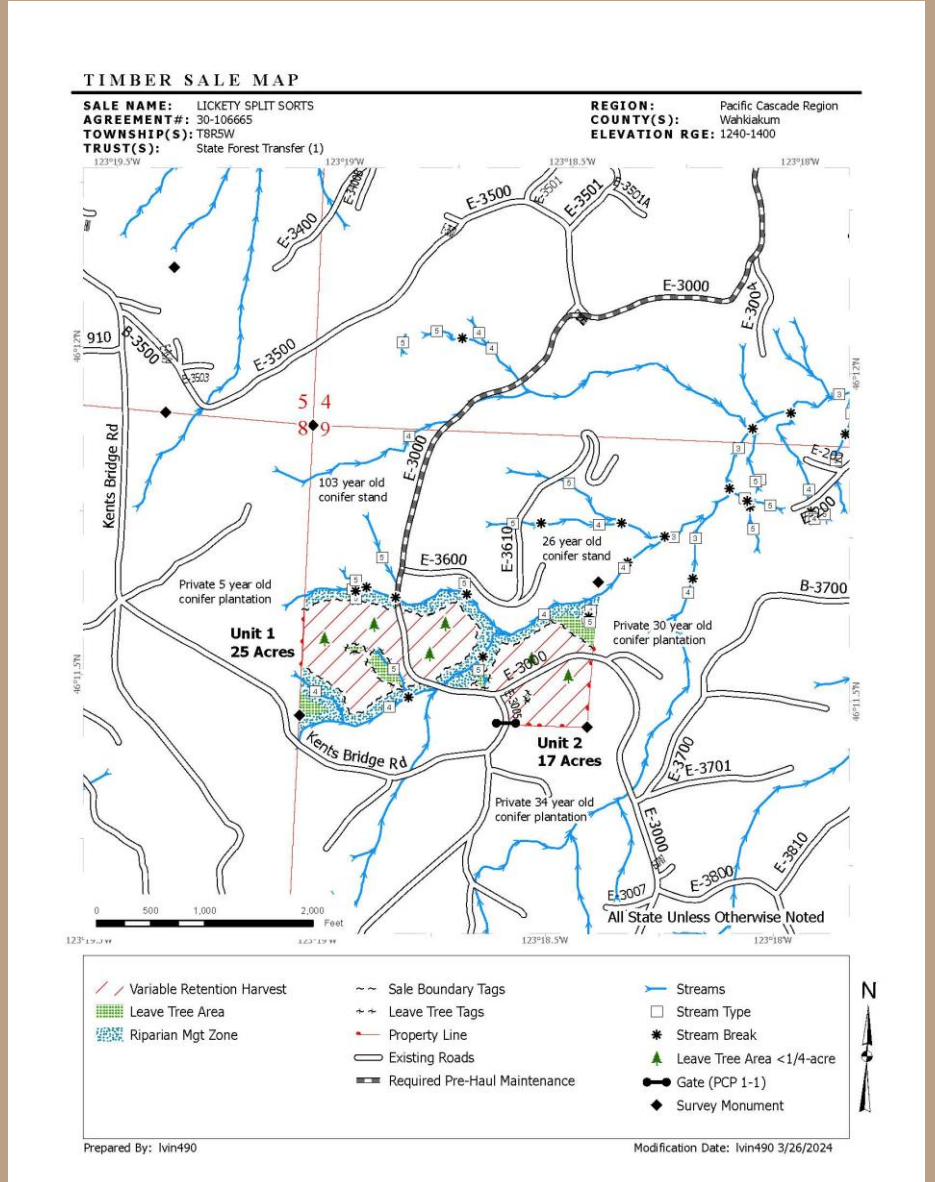
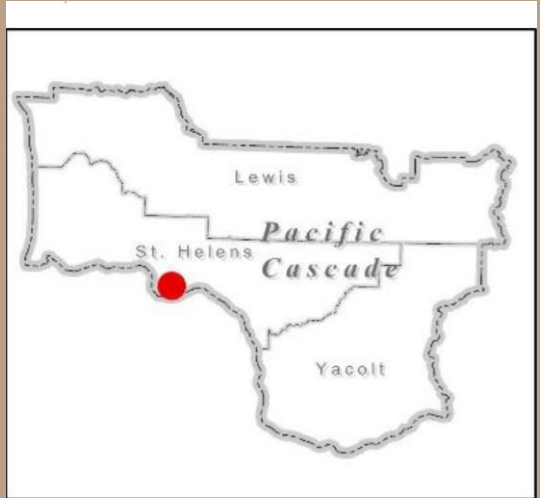
Percent contributed to Long-term forest cover: **33%**

Certifications

Sustainable Forestry Initiative

Notable Protected Features:

- Streams & associated riparian management zones
- FP rule-identified landforms



Lickety Split Sorts TIMBER SALE 30-106665



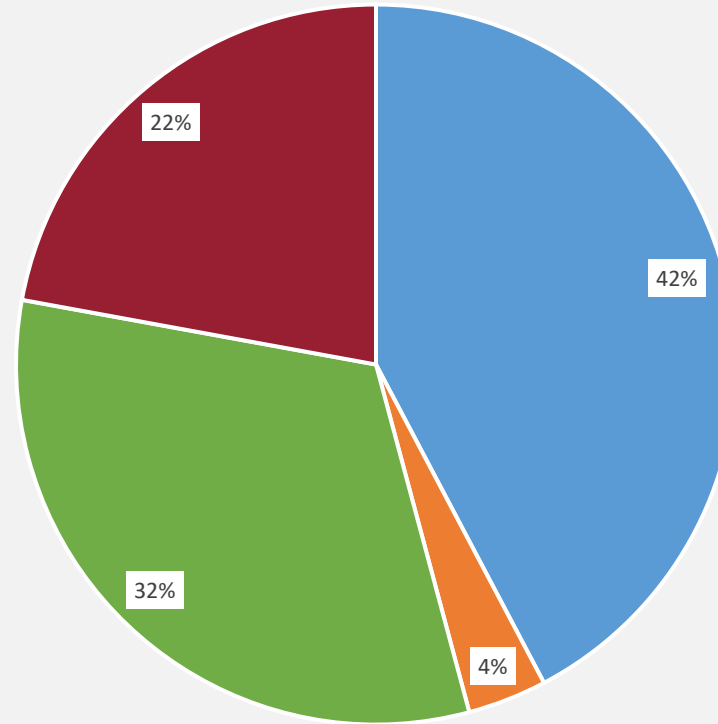
Trust 01 - Wahkiakum County**

Taxing District	Total to Fund
Wahkiakum County	\$479,051.92
Totals:	\$479,051.92

Species	Stock Type	Trees Per Acre
Grand Fir	P+1	50
Douglas Fir	1+1	300
Western Redcedar	P+1	50

Appraised Revenue % by Trust

- 01=State Forest Board Transfer
- 02=State Forest Board Purchase
- 03=Common School & Indemnity
- 04=Agricultural School



Recommend all sales be approved for auction



