



# Stemilt 2

# Direct Transfer

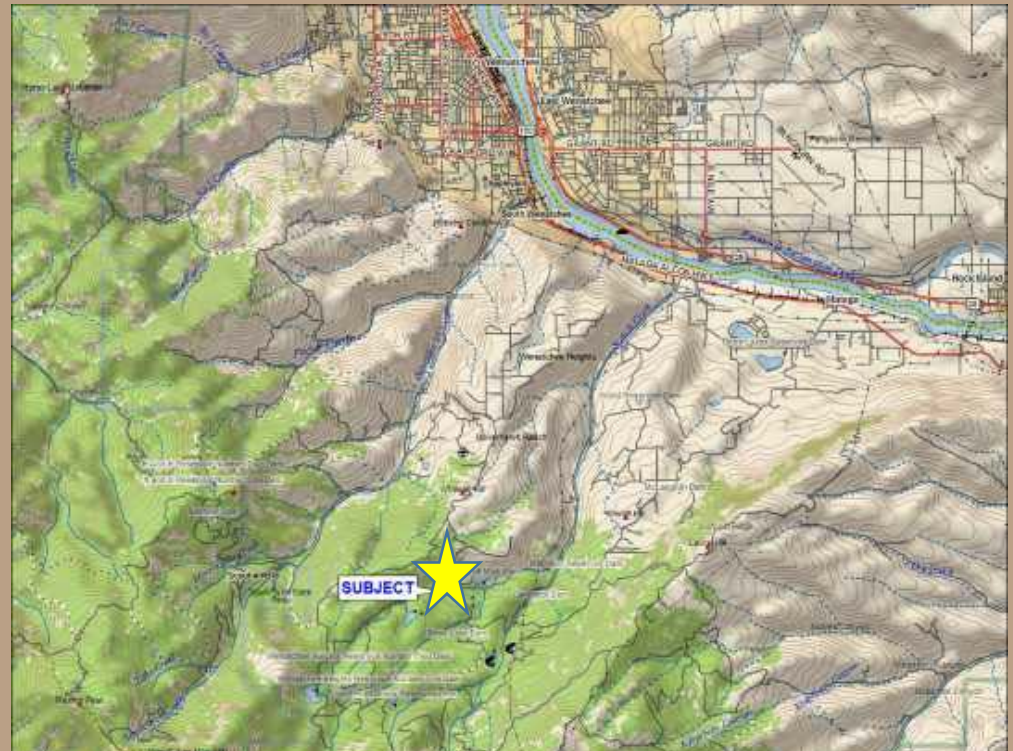
DNR to WDFW



# Stemilt 2 Transfer

## Location

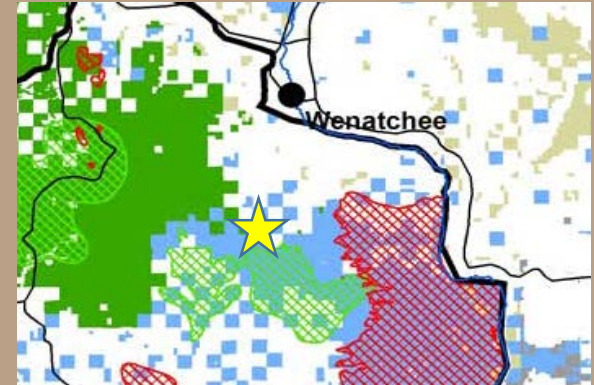
- Chelan County
- Transition Area –  
Shrub/Grass To Forest
- Higher elevation –  
2,800' to 3,800'
- Completes transfer of the  
four Stemilt Parcels



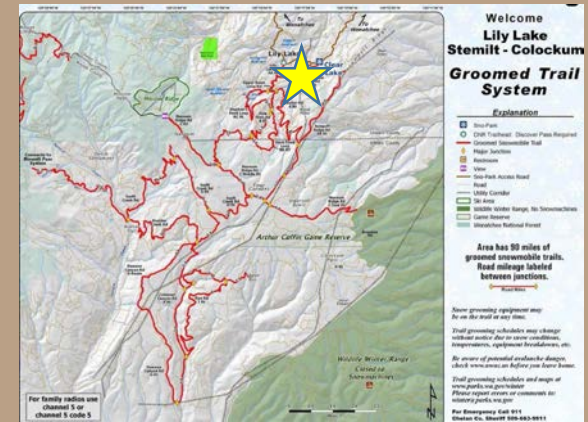
# Stemilt 2 Transfer

## Public Interest

Elk Migration Corridor and Calving Area



Stemilt Partnership - Wildlife, Recreation, Water, Agriculture,

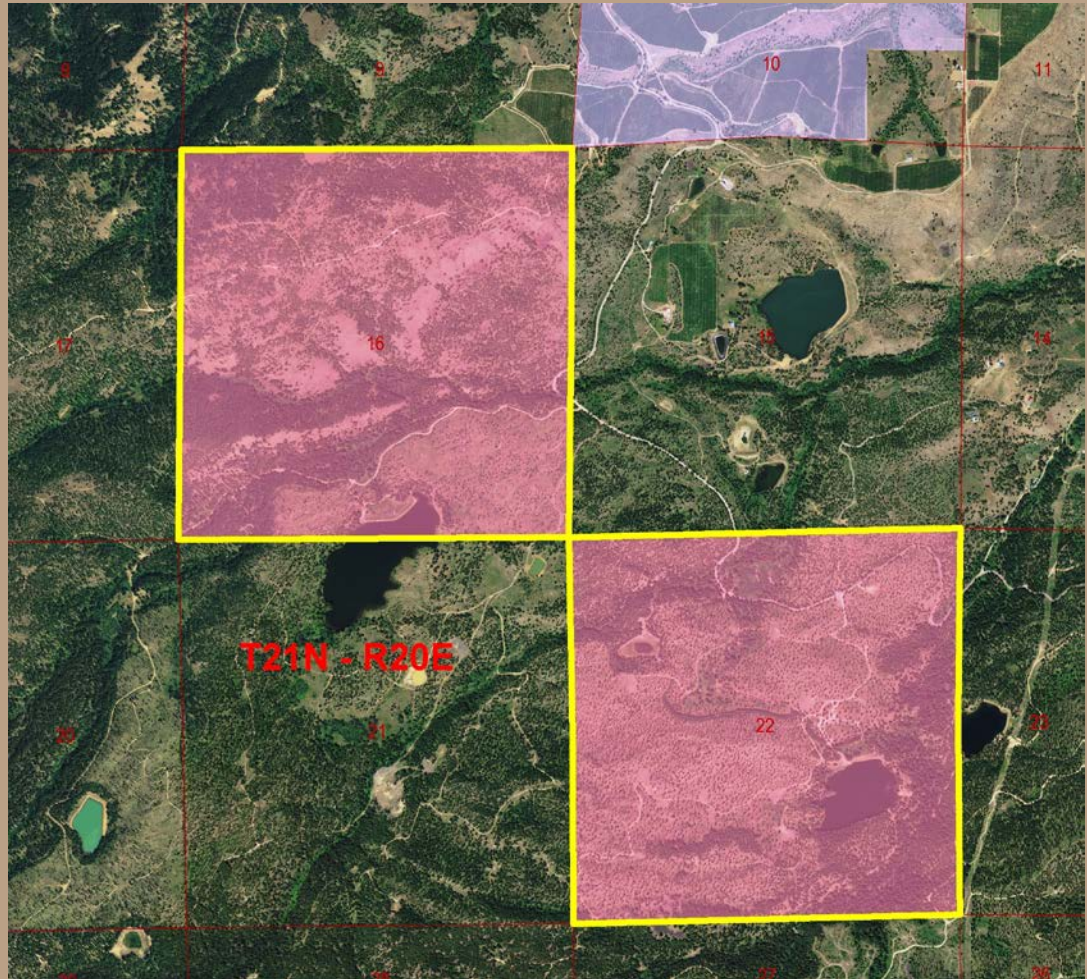


90 miles of Groomed Winter Trails

# Stemilt 2 Transfer

## Property Info

- Common School Trust;  
1,275 acres
- Zoned Commercial Forest
- Prior Timber Harvests;  
Site Class 5-DF
- No water rights; water  
basin fully allocated
- Limited potential for orchard  
development – 400 acres



# Stemilt 2 Transfer

## Appraisal

Appraised Value	Acres	Land	Total
Stemilt 2	1,275.47	\$1,950,000	\$1,950,000
			\$1,529/acre

Distribution of Funds is 100% to the Real Property Replacement Account - Common School Trust



# Stemilt 2 Transfer

Questions ?

Resolution #1493



DNR Photo – Lilly Lake S.22







# Stemilt 2 Transfer

