



WASHINGTON STATE DEPARTMENT OF
Natural Resources

Peter Goldmark - Commissioner of Public Lands

Post-disturbance Management on Forested State Trust Lands of Washington

Presentation to the Board of Natural Resources

Angus Brodie

December 1, 2015



Agenda

- Wildfire in Eastern Washington
- DNR response to wildfire disturbance



*Eastside defined by and delineated using HCP Unit boundaries

CANADA



Washington Eastside Fire Statistics

Acres Burned - All Owners:

- 2003 - 2013 = 1,671,316 ac.
- 2014 = 434,229 ac.
- 2015 = 1,074,732 ac.

DNR State Land Totals

Land Base: 1,556,669 ac.

Forested Acres: 747,018 ac.

DNR Land Base Burned:

- 2014 = 65,336 ac.
- 2015 = 76,430 ac.

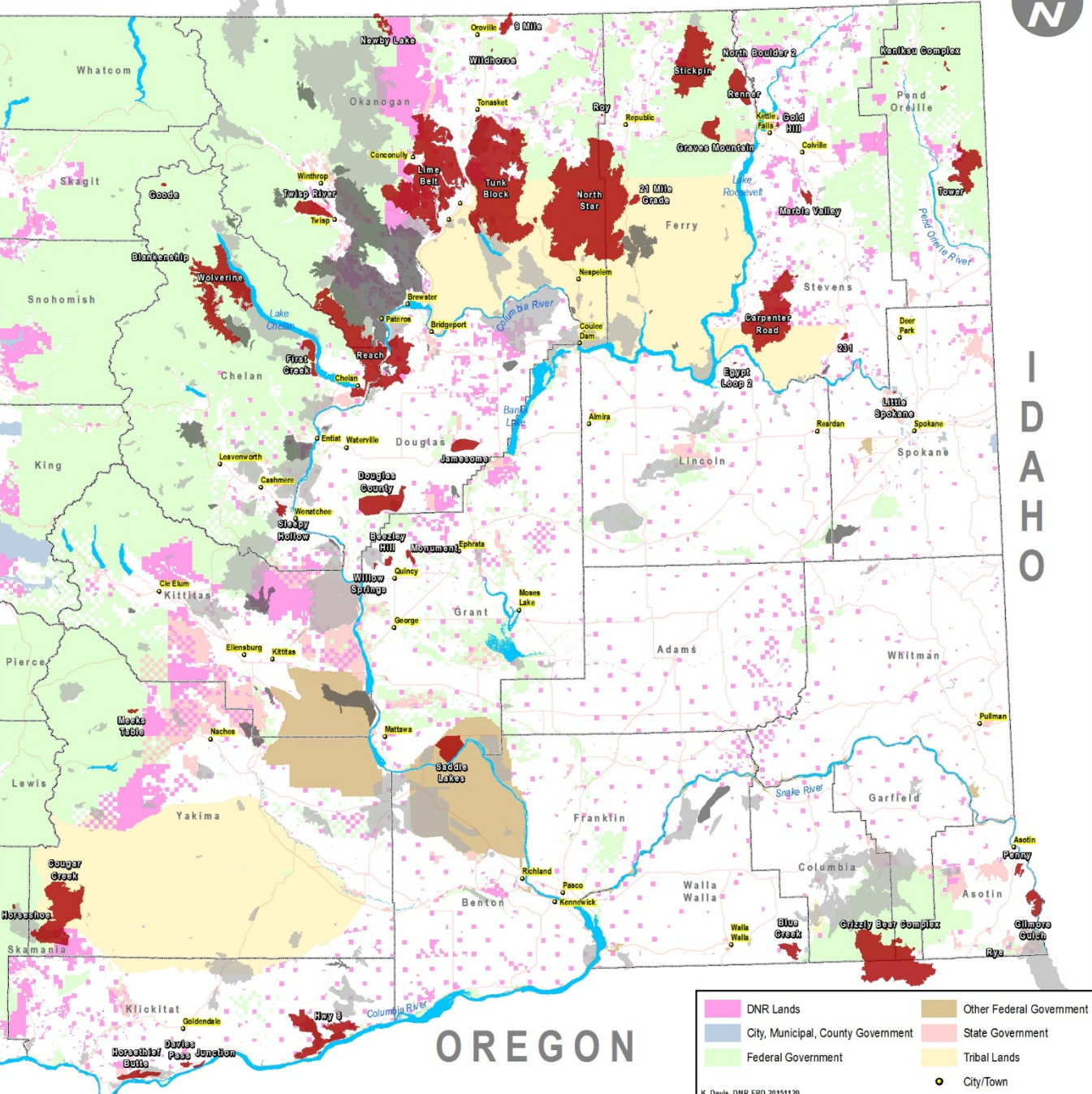
DNR Forested Acres Burned:


- 2014 = 25,060 ac.
- 2015 = 50,140 ac.

 2003 - 2013 Fires

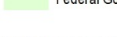
 2014 Fires

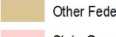
 2015 Fires





 DNR Lands


 City, Municipal, County Government

 Federal Government

 Other Federal Government

 State Government

 Tribal Lands

 City/Town

K. Davis, DNR-FRD 20151120

I
D
A
H
O

OREGON

Guiding principles

1) Retain pre-disturbance objectives

- Fiduciary
- Habitat
- Simply operating under different set of conditions



2) Recognize that recovery of value materials or “salvage” is an economic activity

- Strive to minimize ecological impacts

Guiding language

Statute: RCW 79.15.210
RCW 79.15.220

Determine if salvage is in best interest of the trusts, considering the financial value of the materials, as well as the physical and social environment

Policy for Sustainable Forests

Catastrophic loss prevention

Habitat Conservation Plan

In Northern Spotted Owl habitat management areas salvage permitted, but goal is to minimize live tree harvest, maximize and clump retention of large, safe standing trees for future snags



General Approach

- 1) Determine the extent and level of damage
- 2) Determine where its prudent to consider harvests given the changed environmental conditions
- 3) Determine how much of damaged materials can be recovered considering:
 - financial outcomes
 - budget constraints



Screening

Within the burn areas:

- Slopes < 40 Percent
- Slope Stability Rating < 2
- Road access
- Burn severity
 - Stand replacement
 - Mixed severity
 - Patch sizes
- Volume per acre



Volume/Acre	Distance to Nearest Road		
	0-500 feet	500-1500 Feet	More than 1500 feet
10+ MBF/acre	High Priority	High Priority	Moderate Priority
5-10 MBF/acre	High Priority	Moderate Priority	Low Priority
0-5 MBF/acre	Moderate Priority	Low Priority	Low Priority



2015 Fire Salvage Sales

A number of large fires in Eastern Washington in Okanogan, Ferry, Steven's, Pend Oreille and Yakima Counties

- 737,000 acres burned total
- 50,000 acres forested State Trust lands
- 27,000 acres considered
- Mostly mesic Douglas fir/Larch Grand fir sites
- Relative high volumes per acre
- Positive Net Present Values
- ~7,000 acres planned for harvest



Post-harvest treatments

Reforestation

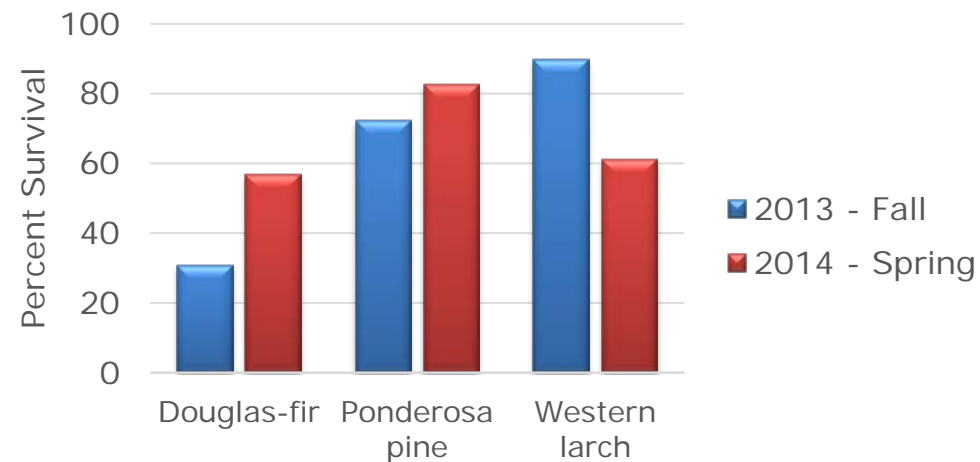
- Planting
- Natural Regeneration

• Challenges

- Environment conditions
- Lack of seed sources
- Lack of seedlings
- Vegetation Competition
- Browse
- Economic return



Reforestation Survival - Table Mountain



Review

- Wildfire in Eastern Washington
- DNR response to wildfire disturbance



Cow Creek – Carlton October 2014



Cow Creek – Carlton June 2015



WASHINGTON STATE DEPARTMENT OF
Natural Resources

Peter Goldmark - Commissioner of Public Lands