

Pluvius

TRUST PURCHASE

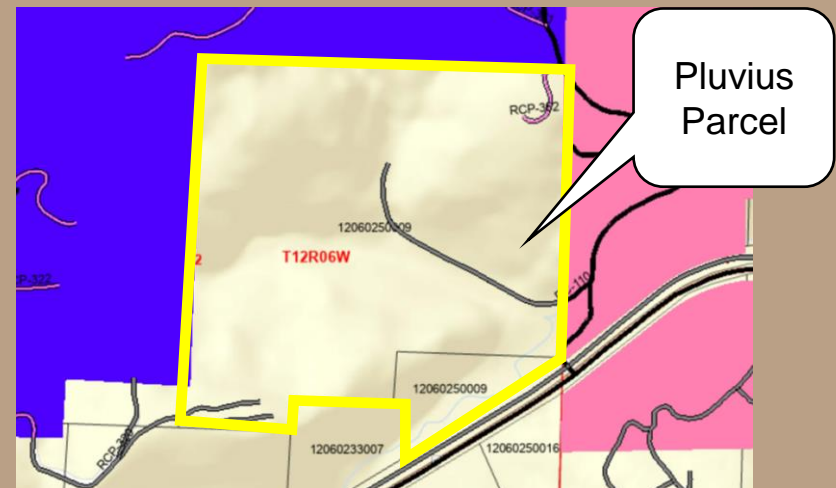
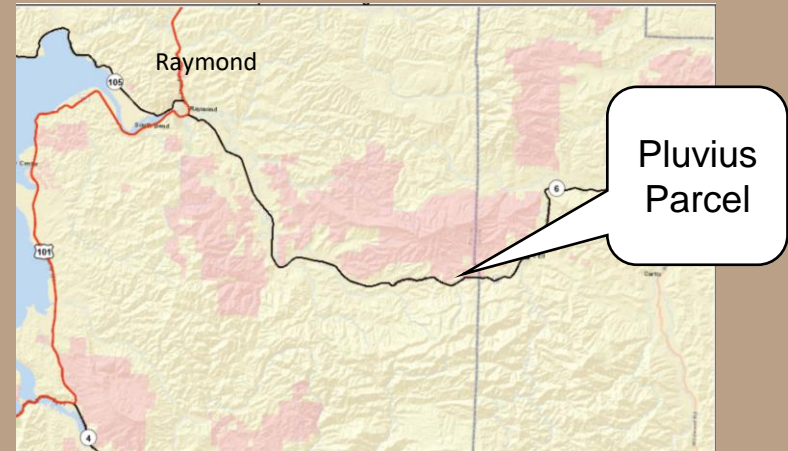
Pacific County



Pluvius

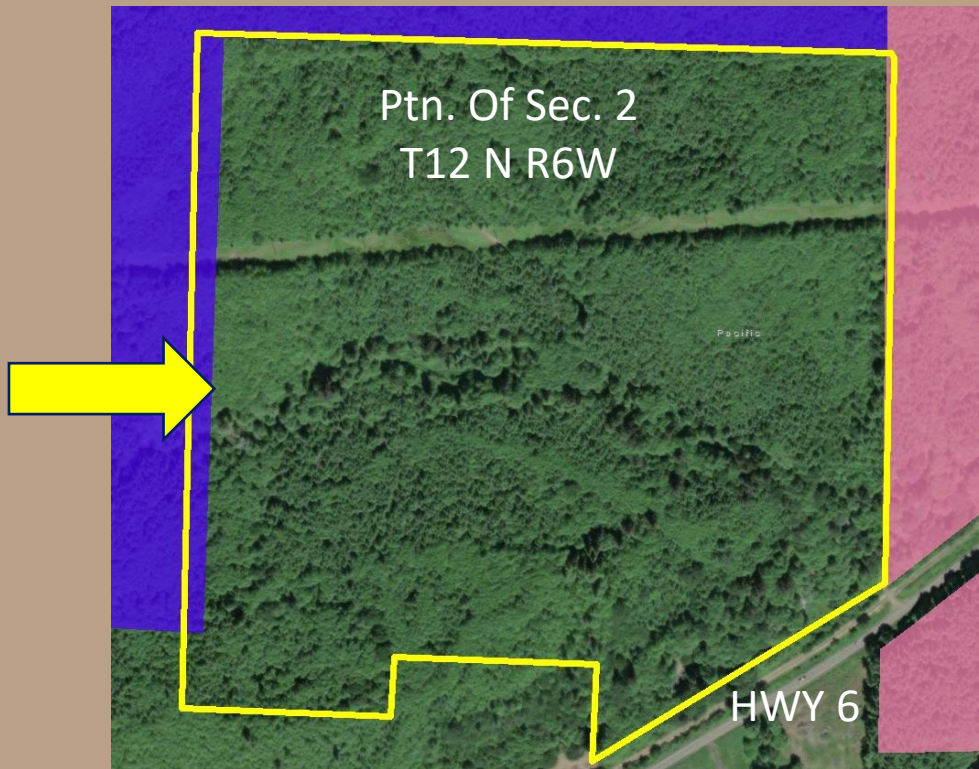
Location

- 22 miles SE of Raymond, WA
- Pacific County
- Private edge-holding in DNR's P & E Landscape
- Purchase using Legislature funds



Pluvius

Property



- 128.00 acres
- Merchantable timber
- 35-45 year old mixed conifer and hardwoods
- High Site Class II; DF-135
- Road system on current state trust lands
- Contacted WSAC and Pacific County



Pluvius

Benefits

- Adds productive forestland to the trust land base in Pacific County
- Removes a private edge-holding within DNR-managed trust lands
- Retains quality working forests
- Improves trust revenue potential

Pluvius

Purchase Price:

- \$600,000; \$4,688 / acre
- State Forest Land Trust funding from the Legislature. Part of \$5 million for three SW WA counties.
- Beneficiary to be Pacific County



Pluvius

Questions ?

Resolution #1608



