



Marbled Murrelet and Sustainable Harvest Calculation

A report to the Board of Natural Resources

presented by

Angus Brodie

November 7, 2017



Agenda

Selection of Preferred Alternative Includes:

- Arrearage
- Riparian Harvest
- Long-Term Habitat Conservation Strategy for Marbled Murrelets

Next Steps

- **Prepare Supplemental Environmental Impact Statement (EIS)** under NEPA and SEPA
- **Develop an HCP amendment** for long-term habitat conservation strategy

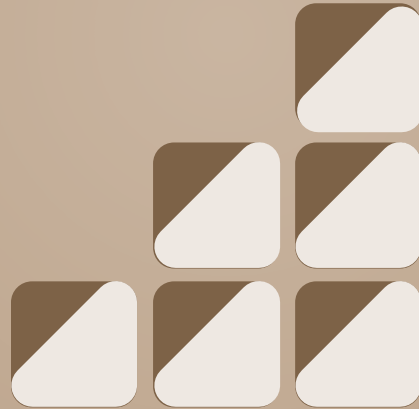
Amendment acts as the application for a new Incidental Take Permit, under section 10(a)(1)(10) of the Endangered Species Act.

Our work this year

February	Report on DEIS Public Meetings
April	Summary of DEIS Public Comments
May	Background on MM and SHC
June	Alternatives and Decision Making Process
July	Financial Analysis
August	Board Retreat
September	Alternative Principles
October	Staff Recommendations



Arrearage



WHY

Must act in best interest of trusts

RCW 79.10.330 Arrearages—End of decade.

If an arrearage exists at the end of any planning decade, the department shall conduct an analysis of alternatives to determine the course of action regarding the arrearage which provides the greatest return to the trusts based upon economic conditions then existing and forecast, as well as impacts on the environment of harvesting the additional timber. The department shall offer for sale the arrearage in addition to the sustainable harvest level adopted by the board of natural resources for the next planning decade if the analysis determined doing so will provide the greatest return to the trusts.

[Link to page 20 June 2017 BNR presentation](#)



Options

A. 702 MMBF

Up to 320 MMBF/decade more than rolled-in option.

B. 462 MMBF

Up to 258 MMBF/decade more than rolled-in option.

C. Rolled In

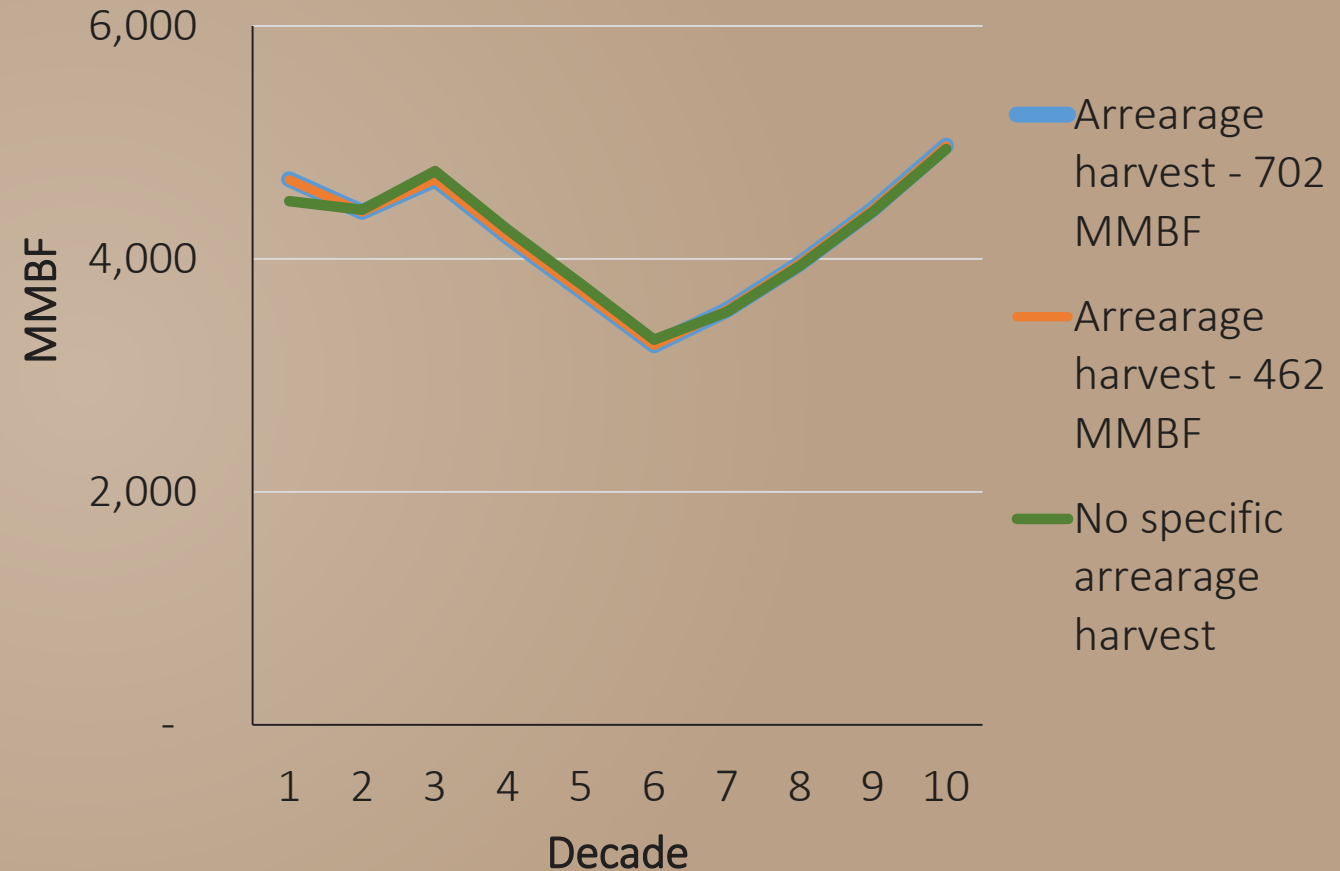
Provides approximately 4,400 MMBF in first decade.

Timeframe: 10, 5, 1

Timeframes under 10 years may present operational difficulties.

Arrearage options across 100 years

- MMLTCS: Alt A; Riparian: 1% -



[Link to page 45 July 2017 BNR presentation](#)



Staff Recommendation

- Harvest 702 MMBF from the sustainable harvest units with deficits over 10 years
- Action is in the best interest of the trusts.
- Action is consistent with all our environmental policies.

[Link to page 16 July 2017 BNR presentation](#)

[Link to page 33 July 2017 BNR presentation](#)



Revised Staff Recommendation

- Address the trust and beneficiary revenue impacts caused from the shortfall of harvest in the sustainable harvest units with deficits
- Add the volume that was transacted through Trust Land Transfer or state forest lands reconveyance programs to the sold volume for each sustainable harvest unit
- The resulting total shortfall of volume from sustainable harvest units with deficits would be 382 MMBF.

[Link to page 42 May 2014 BNR presentation](#)

[Link to page 12 May 2014 BNR presentation](#)





What is the Board's direction for the Preferred Alternative?

Arrearage

- a) Staff Recommendation
- b) Harvest 702 mmbf over 5 years
- c) Harvest 462 mmbf over 10 years
- d) Harvest 462 mmbf over 1 year
- e) Set harvest level without specifying arrearage

Riparian Harvest



WHY

To set expectations and provide direction

DNR must recalculate a sustainable harvest level consistent with DNR policies, including the *Policy for Sustainable Forests*, the 1997 HCP, and applicable state laws.

Options

A. Not included in calculation.

Treatment rates based on ecological and financial criteria.

B. Up to 1% of harvest

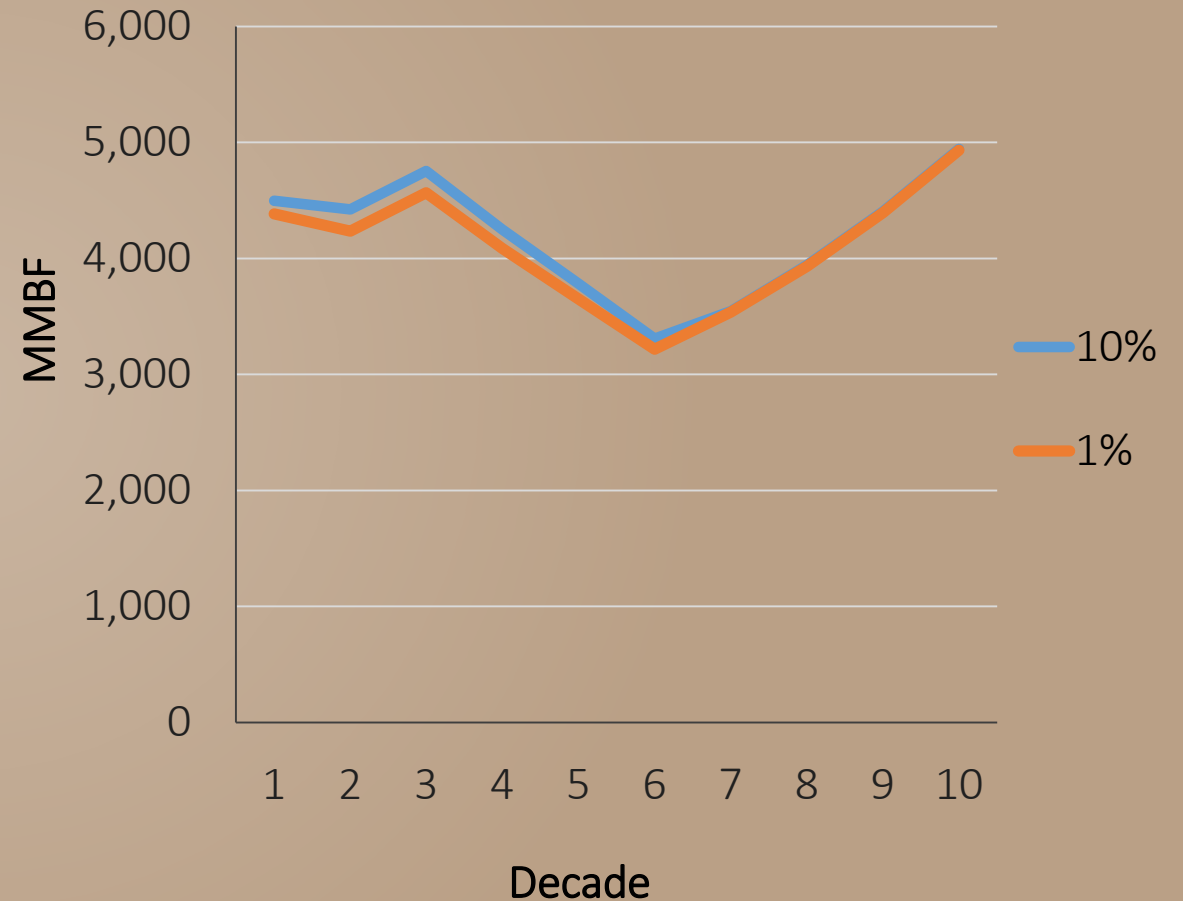
Maintains riparian thinning level at 2015-2016 level. Potentially contributes 1-2% (or 6-7 MMBF/year) of the total harvest during the first decade.

C. Up to 10% of riparian area

More than doubles level from 2015-2016 level. Potentially contributes 4-5% (or 16-20 MMBF/year) of the total harvest during the first decade.

Riparian options across 100 years

- MMLTCS: Alt A; Arrearage: Rolled in -



Staff Recommendation

- The Board expects riparian harvests to be conducted based on their ecological value as intended as part of the State Lands HCP Riparian Forest Restoration Strategy
- Harvest volume from riparian areas will not be included in the calculation of the sustainable harvest level
- Timber volume obtained from harvests in riparian areas can count towards meeting the sustainable harvest target



What is the Board's direction for the Preferred Alternative?

Riparian

- a) Do not include riparian harvest in the calculation
- b) 1% of upland harvest
- c) 10% of riparian area



Long-Term Habitat Conservation Strategy for the Marbled Murrelet



WHY | Interim strategy isn't permanent

DNR must fulfill its commitment to develop a long-term habitat conservation strategy and amend its 1997 Habitat Conservation Plan.

HOW | Meet the Permit Issuance Criteria

- Taking will be incidental
- To the maximum extent practicable, minimize and mitigate impacts
- Ensure adequate funding for the strategy and for unforeseen circumstances
- Not appreciably reduce the likelihood of the survival and recovery of the species in the wild
- Ensure other measures that the services may require will be provided
- Ensure that the conservation strategy will be carried out as specified

[Link to page 5 October 2017 BNR presentation](#)

[Link to DEIS MM page 4-45](#)



**Staff
Recommendation:
Goals**

- **Minimize the impacts**
 - › Conserves all existing occupied sites
 - › Capture existing habitat within conservation areas
 - › Meters habitat in strategic locations
- **Offset impacts and address uncertainty**
 - › Apply buffer of occupied sites
 - › Locate conservation areas in strategic locations
 - › Increase interior forest
- **Reduce disproportionate financial impacts**



Options

	A	B	C	D	E	F	Staff Recommendation
Meets ESA Issuance Criteria	Permitted Interim Strategy	<u>Unlikely</u>	Likely	Likely	Likely	Likely	Likely
Net Present Value ¹ (Billions of dollars)	\$4.71	\$4.85	\$4.66	\$4.66	\$4.64	\$4.25	\$4.66 – 4.71 ²
Long Term Forest Cover (Thousands of acres)	620	593	636	634	640	734	620-624

1. Net Present Value (NPV), assumes arrearage option (702) and riparian (1% of upland harvest).
2. The Staff Recommended Alternative is the only alternative that strategically reduces financial impacts on unduly affected trusts and counties.



What is the Board's direction for the Preferred Alternative?

Marbled Murrelet Long-Term Conservation Strategy

- Staff's recommendation
- Alternative A – *interim strategy*
- Alternative B – *occupied sites only*
- Alternative C – *emphasis areas and special habitat areas*
- Alternative D – *special habitat areas*
- Alternative E – *emphasis areas and special habitat areas*
- Alternative F – *marbled murrelet management areas*

Timeline



2017

2018

2019

Nov

June

Sep

May

Selection of alternative

Work on SDEIS

Release Supplemental DEIS

60 day Public Comment Period

Work on Final EIS

Release Final EIS

Work on HCP Amend.

Submit HCP Amendment To USFWS

60 day Public Comment Period

Work on Final Amendment

Submit Final HCP Amendment To USFWS



