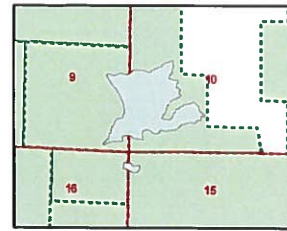
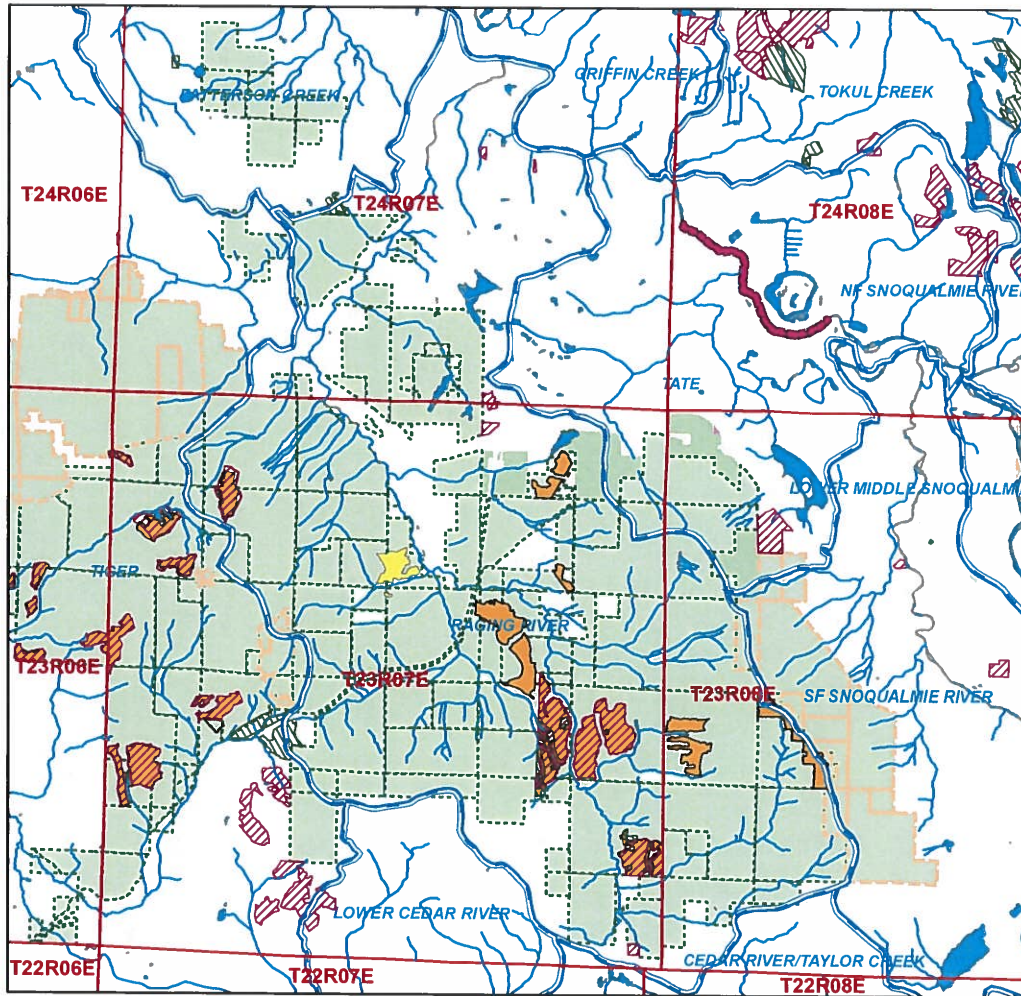


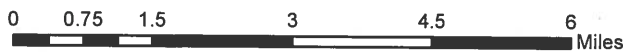
Sale Name: PERTNEAR VRH
 Sale District: SNOQUALMIE District
 Sale Date: August, 2020
 WAU: Raging River
 WAU Acres: 22472.1
 Sale Location: T23R07E 9, 10, 15, 16



This color map is produced by the Washington Department of Natural Resources (DNR), for discussion purposes only. If the copy you have is black and white, some of the information may not read correctly. Wetland locations are from the National Wetland Inventory (NWI) database. They are incomplete and may need field verification. The source data for this map is stored on the DNR's Geographic Information System. Although the DNR makes every reasonable effort to keep such data current, it cannot and does not accept liability for any errors or omissions. No warranty accompanies this material. REFER TO SEPA CHECKLIST FOR ADDITIONAL DETAIL.



1 in = 8,307 ft



- | | | |
|----------------------|---------------------------------|-------------------|
| PERTNEAR VRH | National Park Service | Stream Types 1-4 |
| Sold Sales | US Fish and Wildlife Service | 303D Listed Water |
| Even-Aged Approved | US Bureau of Land Management | NAP's & NRCA's |
| Uneven-Aged Approved | Other Federal | Water Bodies |
| DNR-Managed Land | Other State | |
| Tribal Lands | County, Municipal or University | |
| US Forest Service | WAU Boundary | |

* (Sold Sales, Even-Aged and Uneven-Aged Approved represent data from last seven years only.)