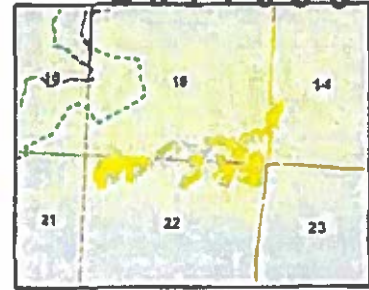


Watershed Administrative Unit Map

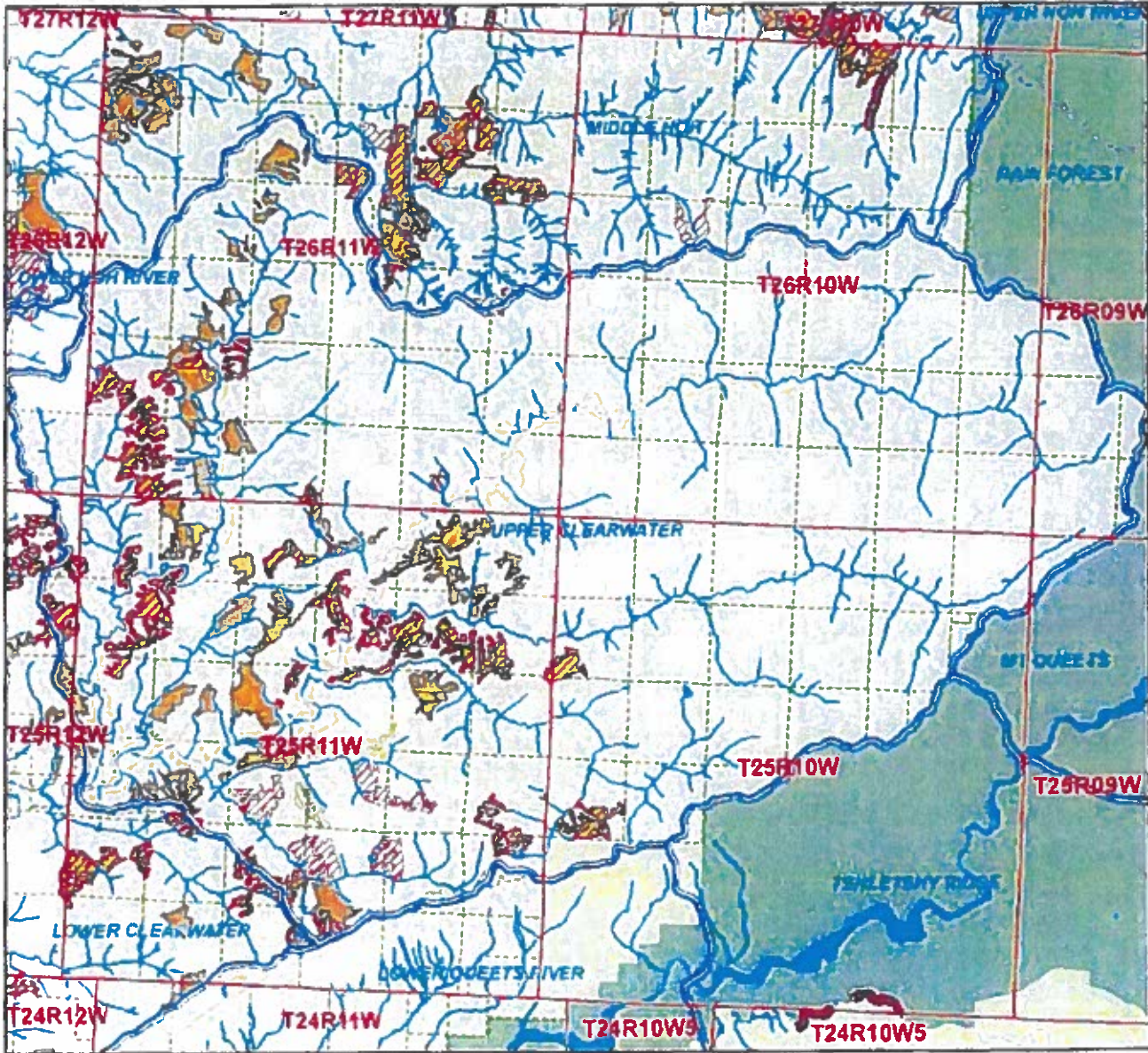
Sale Name: T3 Riparian Gaps
 Sale District: UPR CLEARWTR
 Sale Date: March, 2023
 Sale Location: T25R11W 14, 15, 22
 WAU: Upper Clearwater
 WAU Acres: 58138.7



2617956



This color map is produced by the Washington Department of Natural Resources (DNR), for discussion purposes only. If the copy you have is black and white, some of the information may not read correctly. Wetland locations are from the National Wetland Inventory (NWI) database. They are incomplete and may need field verification. The source data for this map is stored on the DNR's Geographic Information System. Although the DNR makes every reasonable effort to keep such data current, it cannot and does not accept liability for any errors or omissions. No warranty accompanies this material. Refer to the SEPA Checklist for additional detail.

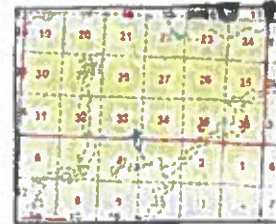


- | | | | |
|-------------------|----------------|----------------|--------------------|
| Sold Sales | 76+ Years old | Type 1 Streams | 303D Listed Water |
| 0 - 25 Years old | Other/Unknown | Type 2 Streams | 40-Ft. Contours |
| 26 - 50 Years old | Open Water | Type 3 Streams | DNR-Managed Land |
| 51 - 75 Years old | Wetlands (NWI) | Type 4 Streams | DNR NAP's & NRCA's |

*Sold Sales, Even-Aged and Uneven-Aged Approved represent data from last seven years only

Map created on 12/16/2022

Sale Name T3 Riparian Gaps
 Sale District UPR CLEARWTR District
 Sale Date March, 2023
 WAU Upper Clearwater
 WAU Acres 58138.700000000004
 Sale Location: T25R11W3 4, T26R11W 20, 28 29 33, 35



2617956

This color map is produced by the Washington Department of Natural Resources (DNR) for discussion purposes only. If the copy you have is black and white, some of the information may not read correctly. Wetland locations are from the National Wetland Inventory (NWI) database. They are incomplete and may need field verification. The source data for this map is stored on the DNR's Geographic Information System. Although the DNR makes every reasonable effort to keep such data current, it cannot and does not accept liability for any errors or omissions. No warranty accompanies this material. REFER TO SEPA CHECKLIST FOR ADDITIONAL DETAIL.



1 in = 1:129,830 ft
 0 1 2 4 6 8 Miles

- | | | |
|----------------------|--------------------------------|-------------------|
| Sold Sales | National Park Service | Stream Types 1-4 |
| Even-Aged Approved | US Fish and Wildlife Service | 303D Listed Water |
| Uneven-Aged Approved | US Bureau of Land Management | NAP s & NRCA s |
| DNR-Managed Land | Other Federal | Water Bodies |
| Tribal Lands | Other State | T3 CAMP RUN |
| US Forest Service | County Municipal or University | |
| WAU Boundary | | |

*(Sold Sales, Even-Aged and Uneven-Aged Approved represent data from last seven years only.)