

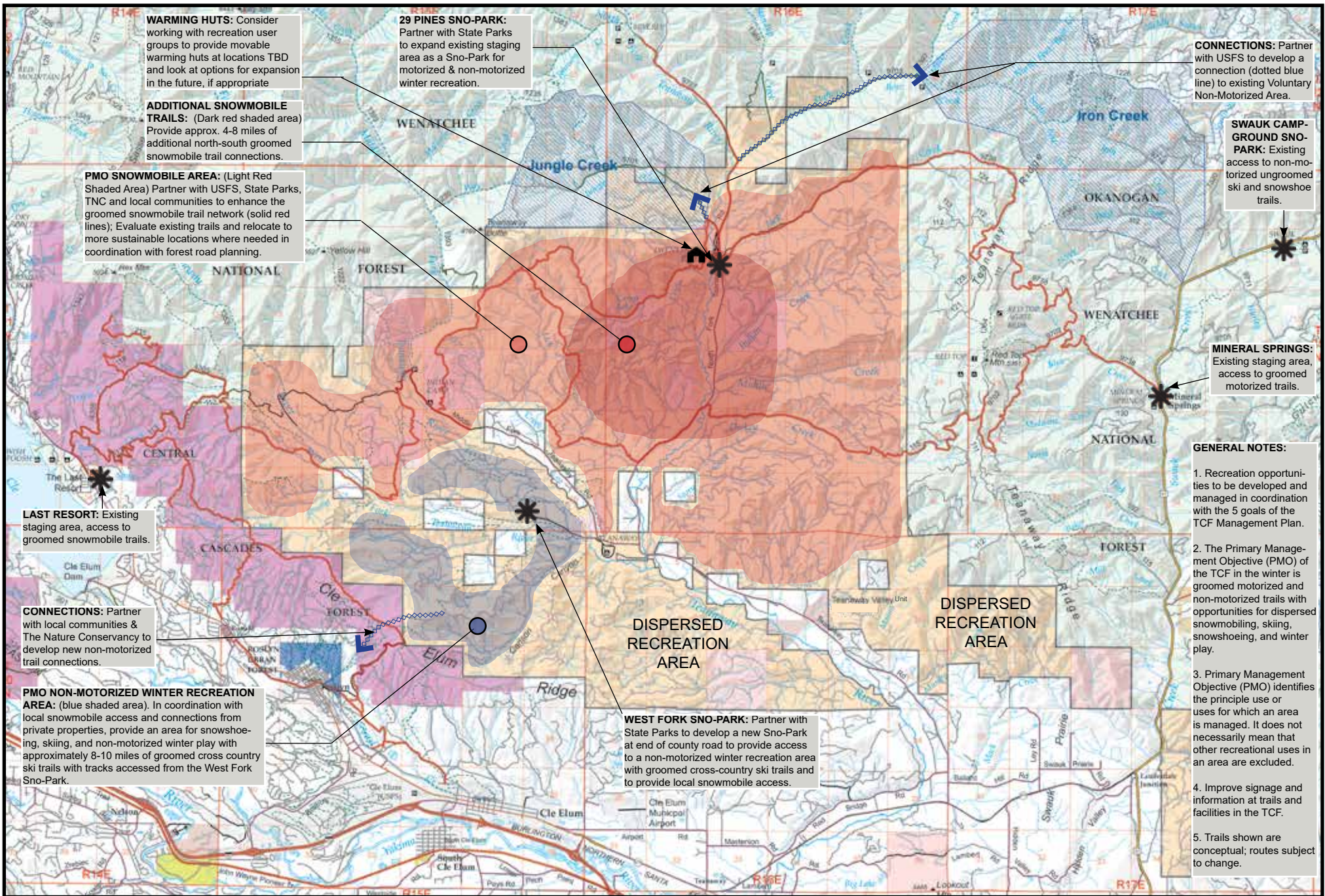
Teanaway Community Forest Summer Recreation Concepts

3/08/2018 DRAFT-TRAILS AND FACILITIES SHOWN
ARE CONCEPTS FOR DISCUSSION PURPOSES ONLY

KEY

	Non-motorized trails for hiking, biking and horseback riding		Higher Density Trails
	Multi-Use trails for hiking, biking, horse & motorcycles		Moderate Density Trails
	Scenic driving roads, seasonal access		Lower Density Trails
			River and Road Corridor





WARMING HUTS: Consider working with recreation user groups to provide movable warming huts at locations TBD and look at options for expansion in the future, if appropriate

29 PINES SNO-PARK: Partner with State Parks to expand existing staging area as a Sno-Park for motorized & non-motorized winter recreation.

ADDITIONAL SNOWMOBILE TRAILS: (Dark red shaded area) Provide approx. 4-8 miles of additional north-south groomed snowmobile trail connections.

PMO SNOWMOBILE AREA: (Light Red Shaded Area) Partner with USFS, State Parks, TNC and local communities to enhance the groomed snowmobile trail network (solid red lines); Evaluate existing trails and relocate to more sustainable locations where needed in coordination with forest road planning.

CONNECTIONS: Partner with USFS to develop a connection (dotted blue line) to existing Voluntary Non-Motorized Area.

SWAUK CAMP-GROUND SNO-PARK: Existing access to non-motorized ungroomed ski and snowshoe trails.

MINERAL SPRINGS: Existing staging area, access to groomed motorized trails.

LAST RESORT: Existing staging area, access to groomed snowmobile trails.

CONNECTIONS: Partner with local communities & The Nature Conservancy to develop new non-motorized trail connections.

PMO NON-MOTORIZED WINTER RECREATION AREA: (blue shaded area). In coordination with local snowmobile access and connections from private properties, provide an area for snowshoeing, skiing, and non-motorized winter play with approximately 8-10 miles of groomed cross country ski trails with tracks accessed from the West Fork Sno-Park.

DISPERSED RECREATION AREA

DISPERSED RECREATION AREA

WEST FORK SNO-PARK: Partner with State Parks to develop a new Sno-Park at end of county road to provide access to a non-motorized winter recreation area with groomed cross-country ski trails and to provide local snowmobile access.

- GENERAL NOTES:**
1. Recreation opportunities to be developed and managed in coordination with the 5 goals of the TCF Management Plan.
 2. The Primary Management Objective (PMO) of the TCF in the winter is groomed motorized and non-motorized trails with opportunities for dispersed snowmobiling, skiing, snowshoeing, and winter play.
 3. Primary Management Objective (PMO) identifies the principle use or uses for which an area is managed. It does not necessarily mean that other recreational uses in an area are excluded.
 4. Improve signage and information at trails and facilities in the TCF.
 5. Trails shown are conceptual; routes subject to change.

Teanaway Community Forest Winter Recreation Concepts

03/08/2018 DRAFT-TRAILS AND FACILITIES SHOWN ARE CONCEPTS FOR DISCUSSION PURPOSES ONLY

KEY

- PMO Snowmobile Area with groomed trails.
- PMO Non-motorized winter recreation area with groomed cross-country ski trails.
- Groomed snowmobile trails to be evaluated and rerouted where needed
- Snowmobile trail sections to be rerouted
- Non-motorized connections for skiing and snow shoeing

