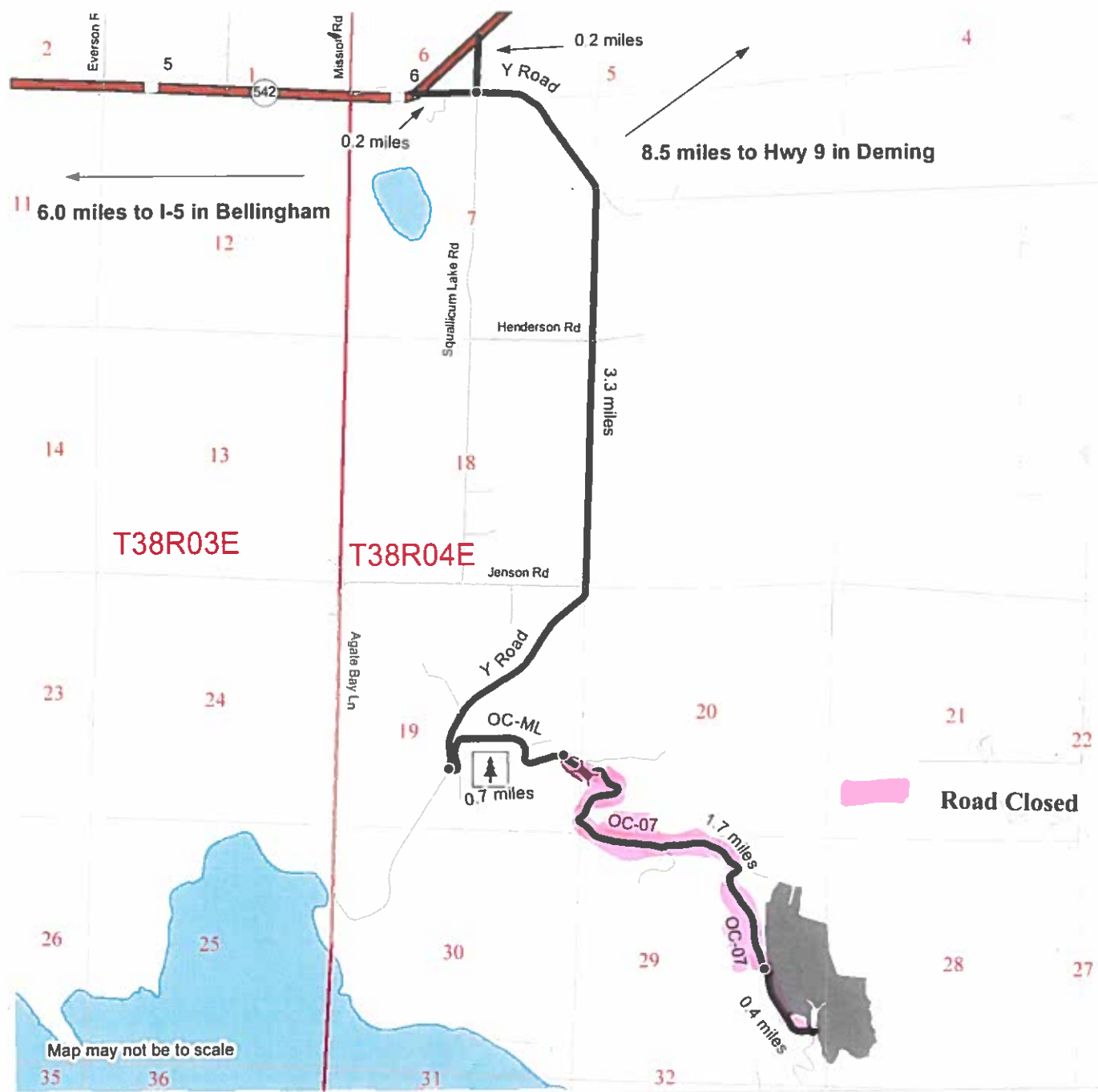


ATTENTION

OC-07 Road Closed Until Further Notice Due To Olsen Creek Bridge Installation

Closed to motorized vehicles and foot traffic for safety. Gate may be locked at any time.



- Timber Sale Unit
- Haul Route
- Other Roads
- Milepost Markers
- Bridge
- Distance Indicator
- Tree Orchard

Prepared By: kbly490



For more information, call 360-856-3500 or visit www.dnr.wa.gov