



**HILARY S. FRANZ**  
COMMISSIONER OF PUBLIC LANDS



### **DNR's Vision**

Our actions ensure a future where Washington's lands, waters, and communities thrive.

### **DNR's Mission**

Manage, sustain, and protect the health and productivity of Washington's lands and waters to meet the needs of present and future generations.

### **Forested Trust Lands**

Forested trust lands are a special type of **public lands** that generate revenue for specific beneficiaries, **held in perpetuity** to provide equity across generations, and **sustainably managed** to retain the long-term production capacity of the forest, recognizing that near-term actions can create long-term economic, ecological, and social benefits.

# Forested State Trust Lands: Supporting Schools, Counties, and Critical Services

## **MANAGING WORKING FORESTS**

State trust lands are different than other publicly managed lands. They come with a legal responsibility to generate revenue for their designated beneficiaries, such as schools, counties, and critical local services.

There are more than 2 million acres of forested state trust lands managed by the Washington State Department of Natural Resources for long-term timber production, specific habitat objectives, and protection of clean, abundant water. These forests often provide public recreation opportunities, too.

As stewards of the lands and natural resources, DNR draws upon a variety of staff, including foresters, engineers, geologists, biologists, hydrologists, archaeologists, economists, and others as management activities are planned. All DNR-managed forested trust lands are certified under the Sustainable Forestry Initiative® (SFI). Certified forests are grown to an approved set of standards that demonstrate environmentally responsible, socially beneficial, and economically viable management practices. For more information on DNR's forest certification program, go online to [bit.ly/DNRandSFI](https://bit.ly/DNRandSFI).

## **KEY POLICIES AND REGULATIONS**

### **Habitat Conservation Plan**

DNR provides habitat for species listed as threatened or endangered under the federal Endangered Species Act.

### **Policy for Sustainable Forests**

The agency's forest management policies were adopted by the Board of Natural Resources in 2006.

### **Sustainable Harvest**

Forested trust lands are managed to generate sustained yield. Decadal harvest levels are approved by the Board of Natural Resources.

### **Washington Forest Practices Act**

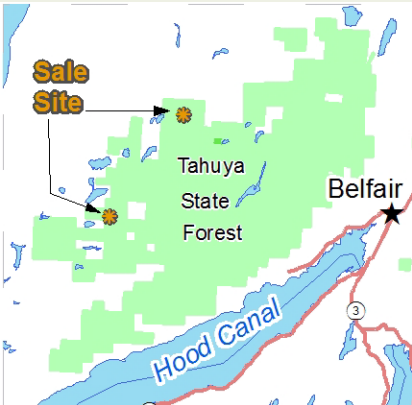
DNR follows state regulations to protect public resources, such as water quality and fish habitat, on lands managed by the agency.

### **State Environmental Policy Act**

Timber harvests and construction on trust lands are reviewed for probable significant adverse impact and involve the public.



**HILARY S. FRANZ**  
COMMISSIONER OF PUBLIC LANDS

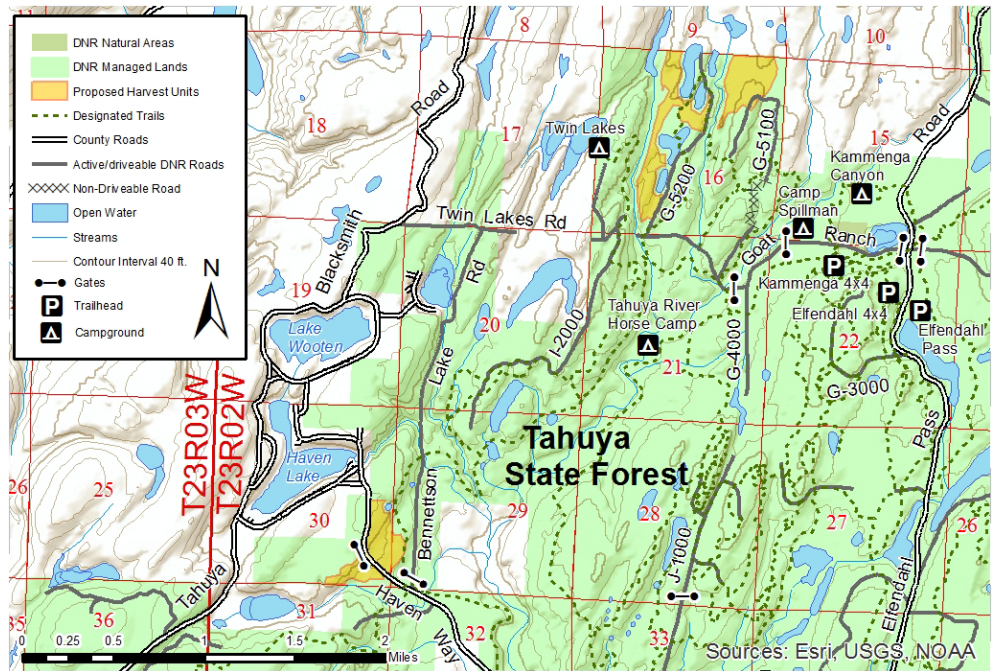


## South Puget Sound Region

DNR's South Puget Sound region, headquartered in Enumclaw, manages more than 350,000 acres of state trust and conservation lands in King, Pierce, Kitsap, Mason, and Thurston counties, as well as parts of Snohomish, Lewis, and Grays Harbor counties.

### CONTACT

**Allyn Cole**  
Belfair Unit Forester  
South Puget Sound Region  
360-280-3314 (cell)  
[allyn.cole@dnr.wa.gov](mailto:allyn.cole@dnr.wa.gov)



## LITTLE WRANGLER TIMBER SALE

*\*Harvest unit boundaries and timeline are approximate and subject to change*

### Several key factors were considered in the planning of this sale:

- Generating revenue for schools in Washington state
- Mitigation, such as no-harvest buffers around sensitive sites, to preserve water quality, recreation trails and retain long-term forest cover for wildlife species under DNR's Habitat Conservation Plan
- Assessments by geologists and foresters to protect any potentially unstable slopes according to Forest Practices Rules
- Units are planned for variable retention harvest, which includes the retention of wildlife trees, standing dead trees, and stream buffers to promote wildlife habitat
- Establishing a vigorous stand of Douglas-fir and other native conifer seedlings to benefit future generations and sequester carbon
- This sale is estimated to generate \$1.5 million for schools, depending on market conditions

## CURRENT PROJECT TIMELINE

