



BAKER TO BELLINGHAM RECREATION PLAN

COMMUNITY MEETING

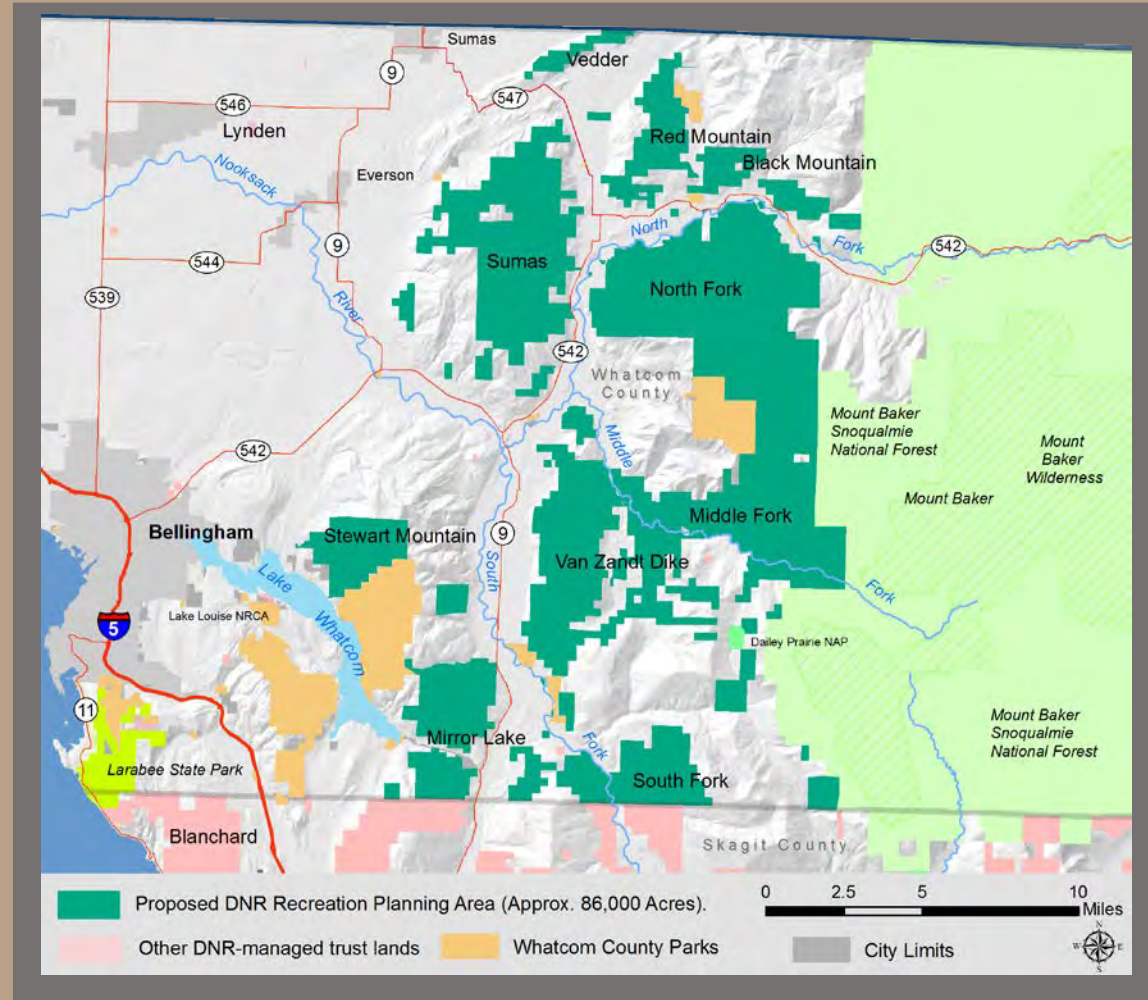
RECREATION PLANNING FOR THE BAKER TO BELLINGHAM PLANNING AREA

Draft 10/11/16 - subject to change without notification



BAKER TO BELLINGHAM RECREATION PLAN

PLANNING AREA*



* Area of Analysis within Whatcom County

Draft 10/11/16 - subject to change without notification

BAKER TO BELLINGHAM RECREATION PLAN

PLANNING PURPOSES

- ❖ Determine types of recreation to be provided & where appropriate
- ❖ Develop objectives for managing recreation over 10-15 years
- ❖ Identify partnerships and volunteer opportunities
- ❖ Establish priorities for implementation

BAKER TO BELLINGHAM RECREATION PLAN

PLANNING GOALS

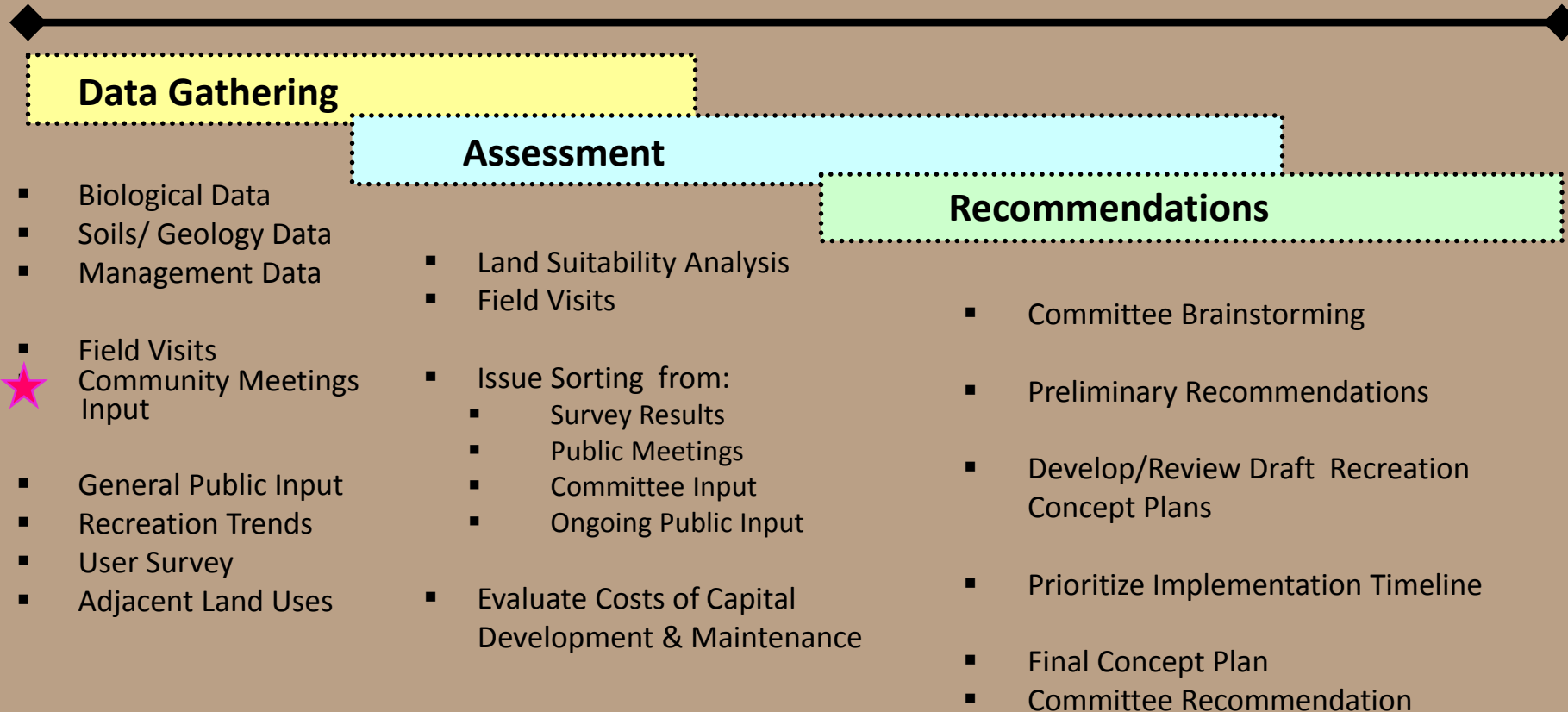
- ❖ **Public safety**
- ❖ **Compatible with state trust management obligations**
- ❖ **Resource protection**
- ❖ **Quality user experience**

Draft November 2016 - subject to change without notification

BAKER TO BELLINGHAM RECREATION PLAN

RECREATION PLANNING PROCESS

Estimated 2-Year Timeframe



Draft November 2016 - subject to change without notification

BAKER TO BELLINGHAM RECREATION PLAN

RECREATION LAND SUITABILITY

Purpose: To create tools (maps) that guide recreation planning

Process: Identify and map areas with long-term limiting factors that affect recreation planning

Biological

Geologic & Soils

Management

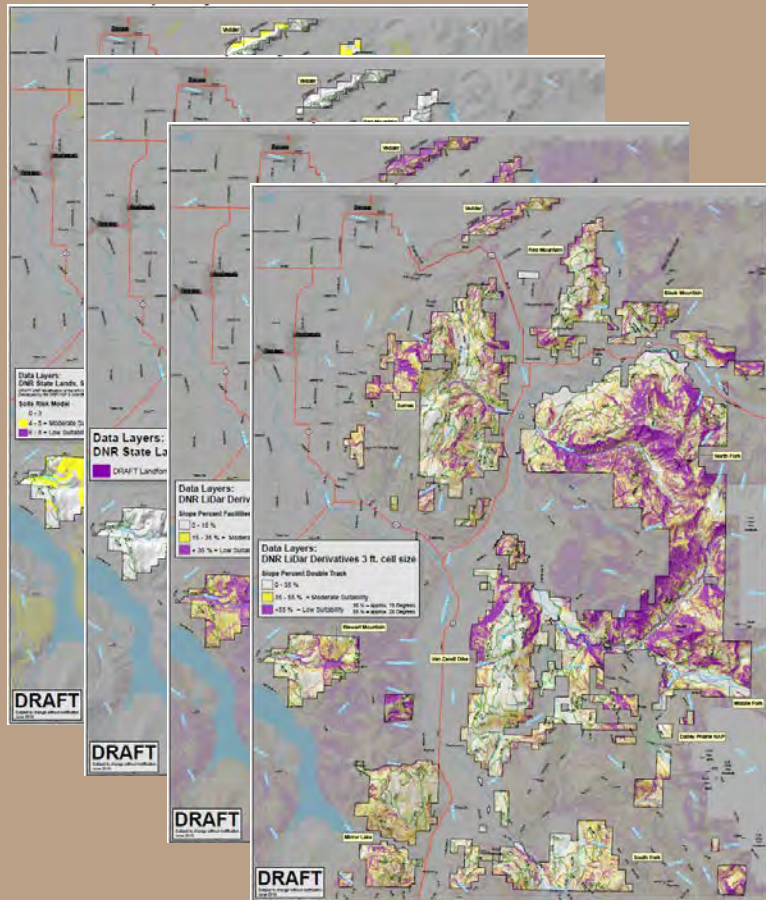
Draft November 2016 - subject to change without notification



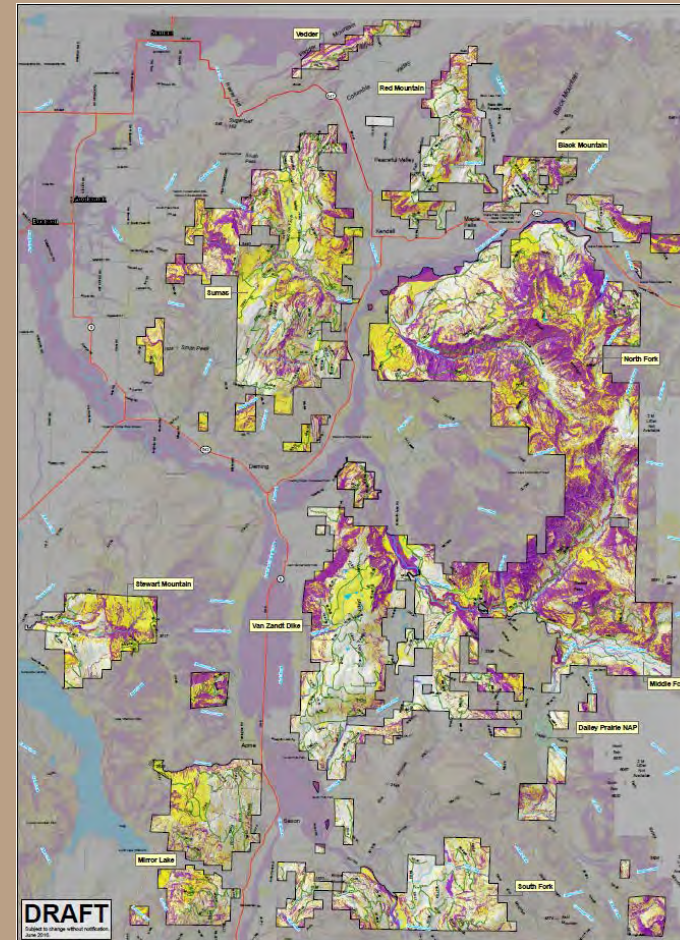
BAKER TO BELLINGHAM RECREATION PLAN

LAND SUITABILITY MAPPING

Data Layers
Added
Together



Composite
Maps



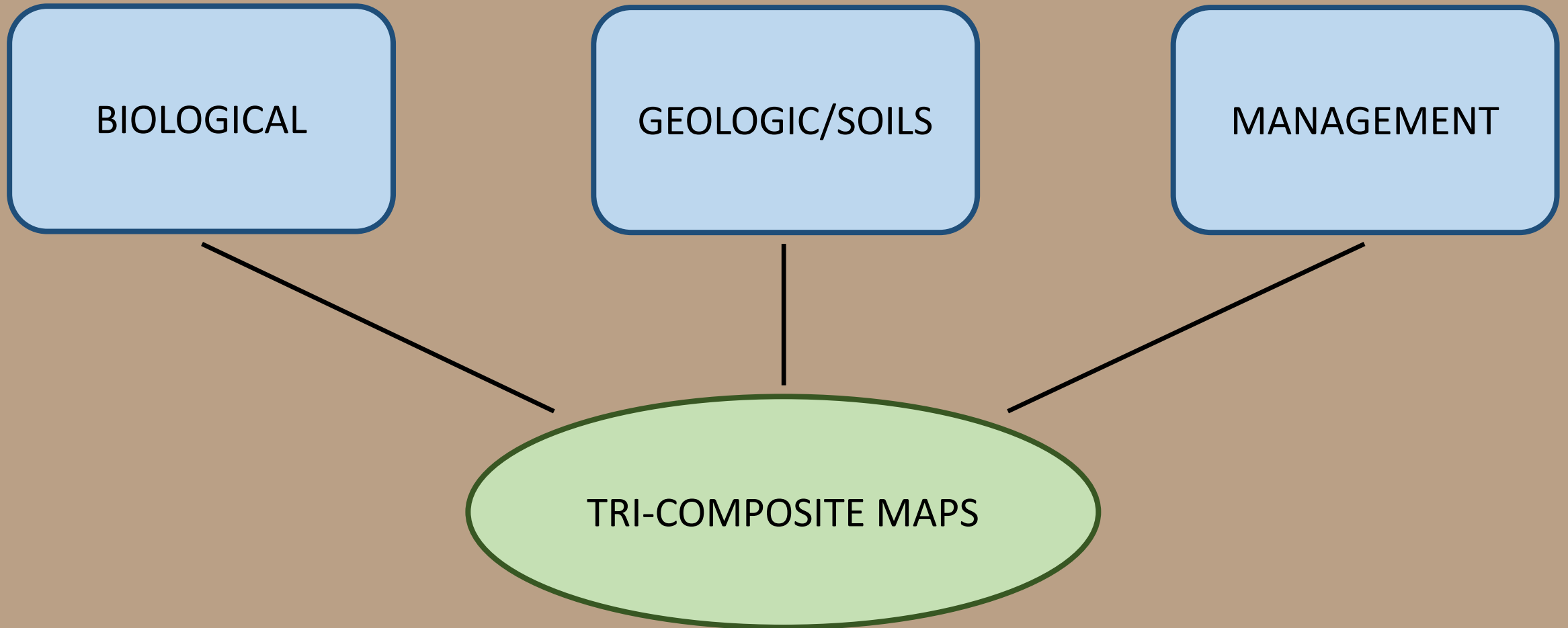
Maps are tools, they do not
represent pre-determined
decisions

Low Suitability does not
mean no access or no
recreation

Draft November 2016 - subject to change without notification



BAKER TO BELLINGHAM RECREATION PLAN

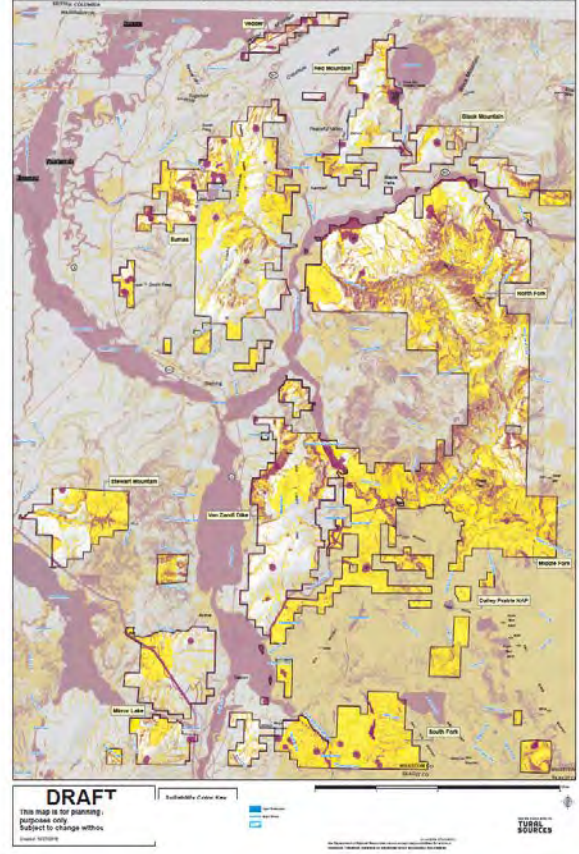


Draft November 2016 - subject to change without notification

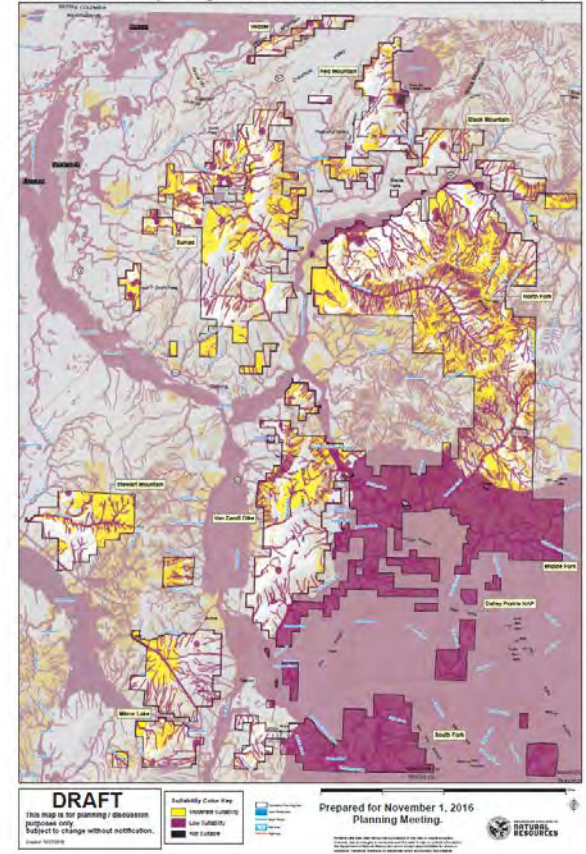
BAKER TO BELLINGHAM RECREATION PLAN

TRI-COMPOSITE MAPS

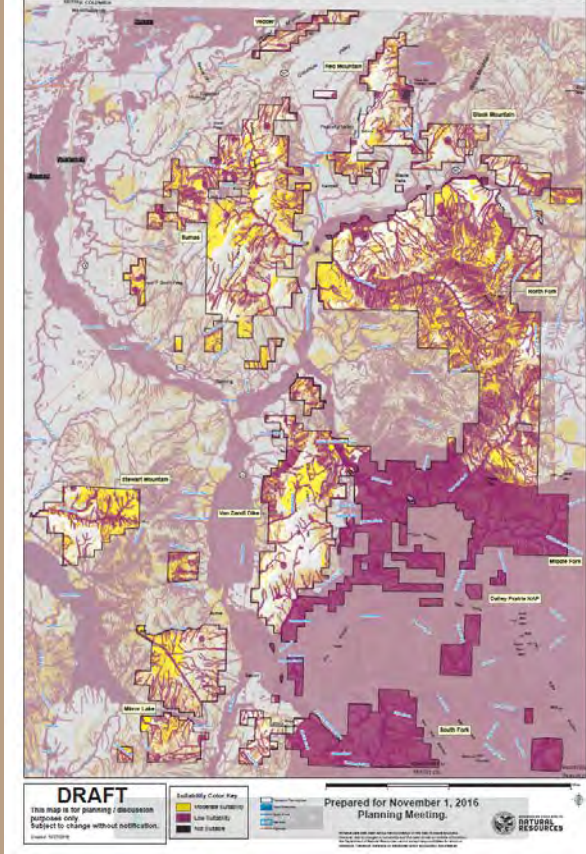
BAKER TO BELLINGHAM RECREATION PLAN
Recreation Suitability - Single Track (non motorized) Trails
Tri Composite



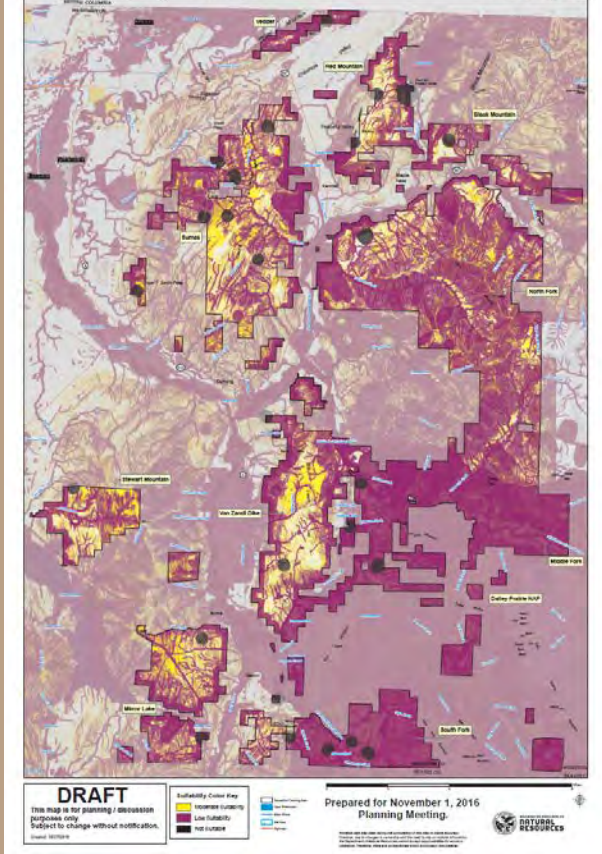
BAKER TO BELLINGHAM RECREATION PLAN
Recreation Suitability - Single Track (motorized) Trails
Tri Composite



BAKER TO BELLINGHAM RECREATION PLAN
Recreation Suitability - DoubleTrack Trails
Tri Composite



BAKER TO BELLINGHAM RECREATION PLAN
Recreation Suitability - Facilities
Tri Composite



Single Track (non-motorized) Trails

Single Track (motorized) Trails

Double Track Trails

Recreation Facilities

Draft November 2016 - subject to change without notification



WASHINGTON STATE DEPARTMENT OF
NATURAL RESOURCES

dnr.wa.gov

BAKER TO BELLINGHAM RECREATION PLAN

QUESTIONS

Draft November 2016 - subject to change without notification



BAKER TO BELLINGHAM RECREATION PLAN

LAND SUITABILITY STATIONS

BIOLOGY

GEOLOGY/SOILS

MANAGEMENT

SOILS/

Draft November 2016 - subject to change without notification



WASHINGTON STATE DEPARTMENT OF
NATURAL RESOURCES

dnr.wa.gov



BAKER TO BELLINGHAM RECREATION PLAN

COMMUNITY ENGAGEMENT

RECREATION PLANNING FOR THE BAKER TO BELLINGHAM PLANNING AREA

Draft 10/11/16 - subject to change without notification

BAKER TO BELLINGHAM RECREATION PLAN

TONIGHT

The purpose of this part of the meeting is to ask you to:

- ❖ Identify what matters most regarding outdoor recreation opportunities
- ❖ Provide ideas on how improving outdoor recreation opportunities can strengthen local communities

BAKER TO BELLINGHAM RECREATION PLAN

LISTENING STATIONS

How will recreation affect your community?

- ❖ **Economically**
- ❖ **Quality of life**
- ❖ **Recreation experience**
- ❖ **Recreation & the Environment**

Draft November 2016 - subject to change without notification

BAKER TO BELLINGHAM RECREATION PLAN

NEXT STEPS

- ❖ This information will help DNR make planning decisions that are complimentary with the adjacent communities
- ❖ Report back to the Recreation Planning Committee with the information prioritized into recreation strategies for the plan

Draft November 2016 - subject to change without notification

BAKER TO BELLINGHAM RECREATION PLAN

OTHER WAYS TO PARTICIPATE

- ❖ **Community Meeting Summer 2017**
- ❖ **Check planning webpage and sign up for e-newsletter updates at www.dnr.wa.gov/BakertoBellingham**
- ❖ **Send an email to us at BakertoBellingham@dnr.wa.gov**
- ❖ **SEPA comment period during environmental review of the draft recreation plan**

Draft November 2016 - subject to change without notification

