

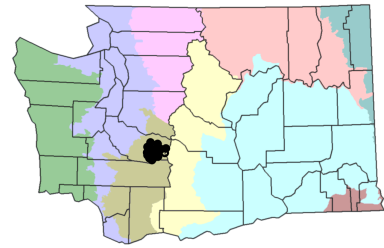
# ***Pedicularis rainierensis*** Pennell & F.A. Warren

Mt. Rainier lousewort

Scrophulariaceae - figwort family

status: State Sensitive, BLM sensitive, USFS sensitive

rank: G2G3 / S2S3



**General Description:** Fibrous-rooted perennial herb 1.5-4 dm tall; hairless below the long-hairy inflorescence. Leaves alternate, pinnately compound. Basal leaves numerous, 5-15 cm long and up to 3 cm wide; blades longer than the petiole, the segments sharply cut and toothed again. Stem leaves several, reduced upward, becoming sessile.

**Floral Characteristics:** Inflorescence a short, spikelike raceme topping an unbranched stem. Calyx lobes 5, the upper shortest, the others partly fused into 2 lateral pairs. Corolla yellowish, tubular about 1.5 cm long, 2-lipped. Hooded upper petal a little longer than or equal to the tube, with a pointed tip but not beaked. Flowers July to August.

**Fruits:** Capsules hairless, flattened, asymmetrical; seeds several, often slightly winged.

**Identification Tips:** *Pedicularis bracteosa* var. *atrosanguinea* is found in the Olympic Mts.; it has leaves 1-7 cm long, its corolla is redish purple or sometimes wholly yellow, and its sepals are slender, elongate, and glandular. *P. ornithorhyncha* leaves are mostly basal and 3-12 x 0.7-2 cm, its flowers are purple and clustered in a dense head, and it has a distinctly beaked upper petal (beak 2-4 mm long).

**Range:** In the vicinity of Mt. Rainier, WA.

**Habitat/Ecology:** Usually subalpine, sometimes alpine, growing in moist meadows, open coniferous forests, and on rocky slopes; often near streams and sometimes lake basins. Common associates include subalpine fir (*Abies lasiocarpa*), mountain hemlock (*Tsuga mertensiana*), pink mountain heath (*Phyllodoce empetriformis*), Cascade bilberry (*Vaccinium deliciosum*), Sitka valerian (*Valeriana sitchensis*), black alpine sedge (*Carex nigricans*), showy sedge (*C. spectabilis*), tundra aster (*Oreostemma alpigenum*), Cusick's speedwell (*Veronica cusickii*), rusty hair saxifrage (*Saxifraga ferruginea*), white pasqueflower (*Pulsatilla occidentalis*), and lousewort species (*Pedicularis* spp.). Substrates range from deep loam to moist talus and gravelly slopes. Elevations: 1400-2100 m (4800-6800 ft).

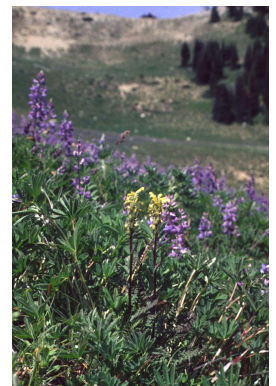
**Comments:** Further inventory in and around Mt. Rainier National Park is recommended. Threats include trampling by elk and hikers, grazing by elk and marmots, collecting, disease, cross country camping, and trails.



Illustration by Jeanne R. Janish,  
©1959 University of Washington  
Press



© Rod Gilbert



© Katy Beck