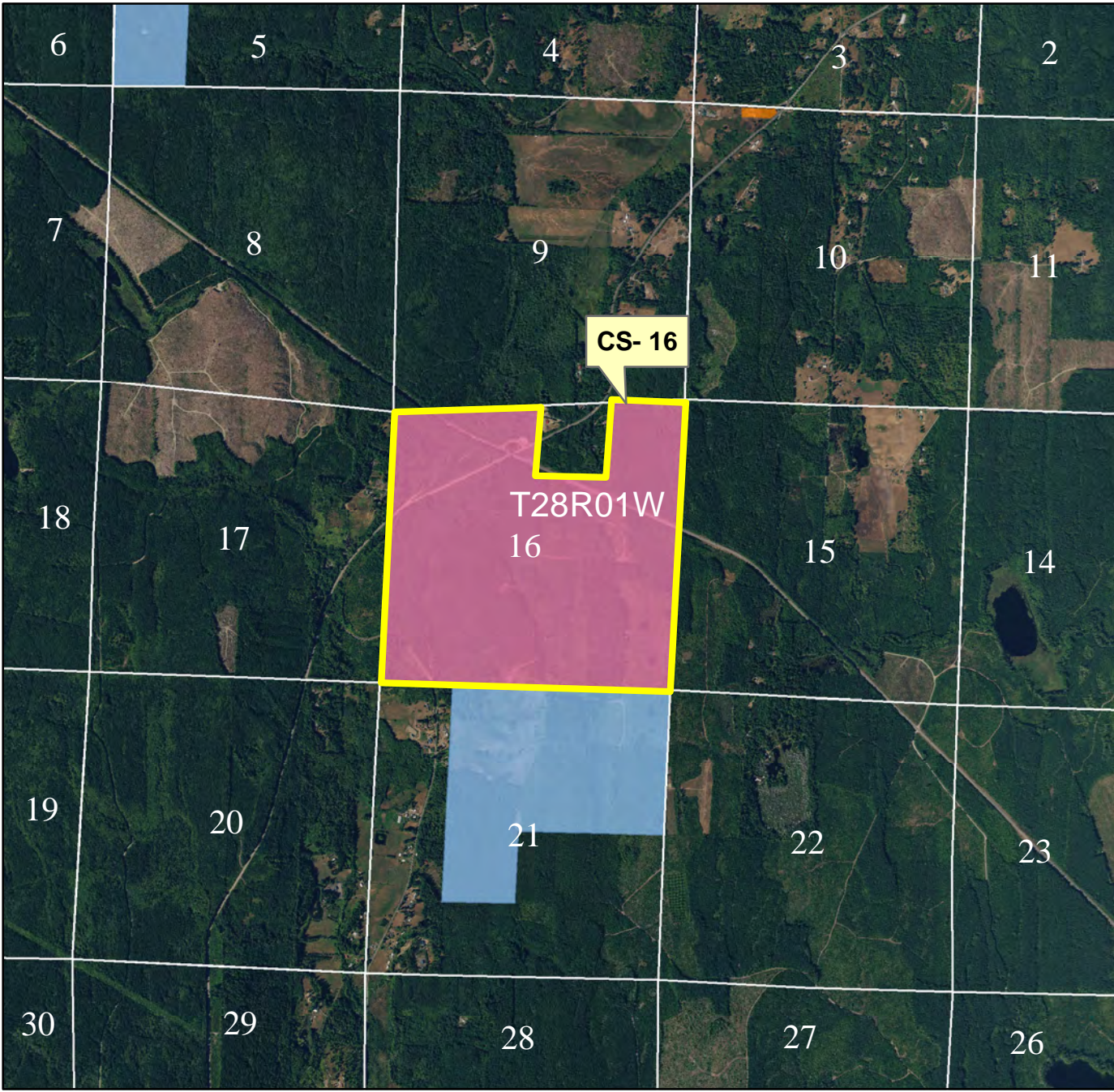


# DABOB BAY INTER-TRUST EXCHANGE

Jefferson County  
Ortho with Trusts



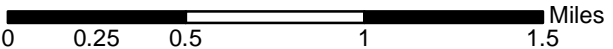
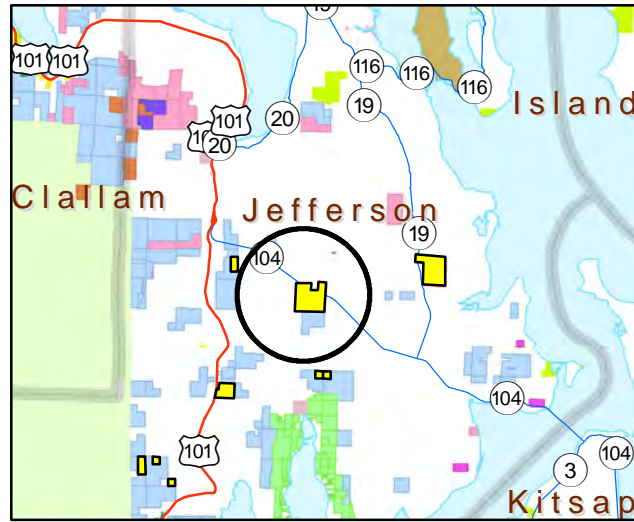
**Legend**

- CS-16

**DNR-Managed Lands by Surface Trust**

**Surface Lands**

- Common School (3)
- State Forest Transfer (1)
- Other DNR-Managed Lands



Disclaimer: Extreme care was used during the compilation of this map to ensure accuracy. However, due to changes in ownership and the need to rely on outside information, the Department of Natural Resources cannot accept responsibility for errors or omissions, and, therefore, there are no warranties which accompany this material.