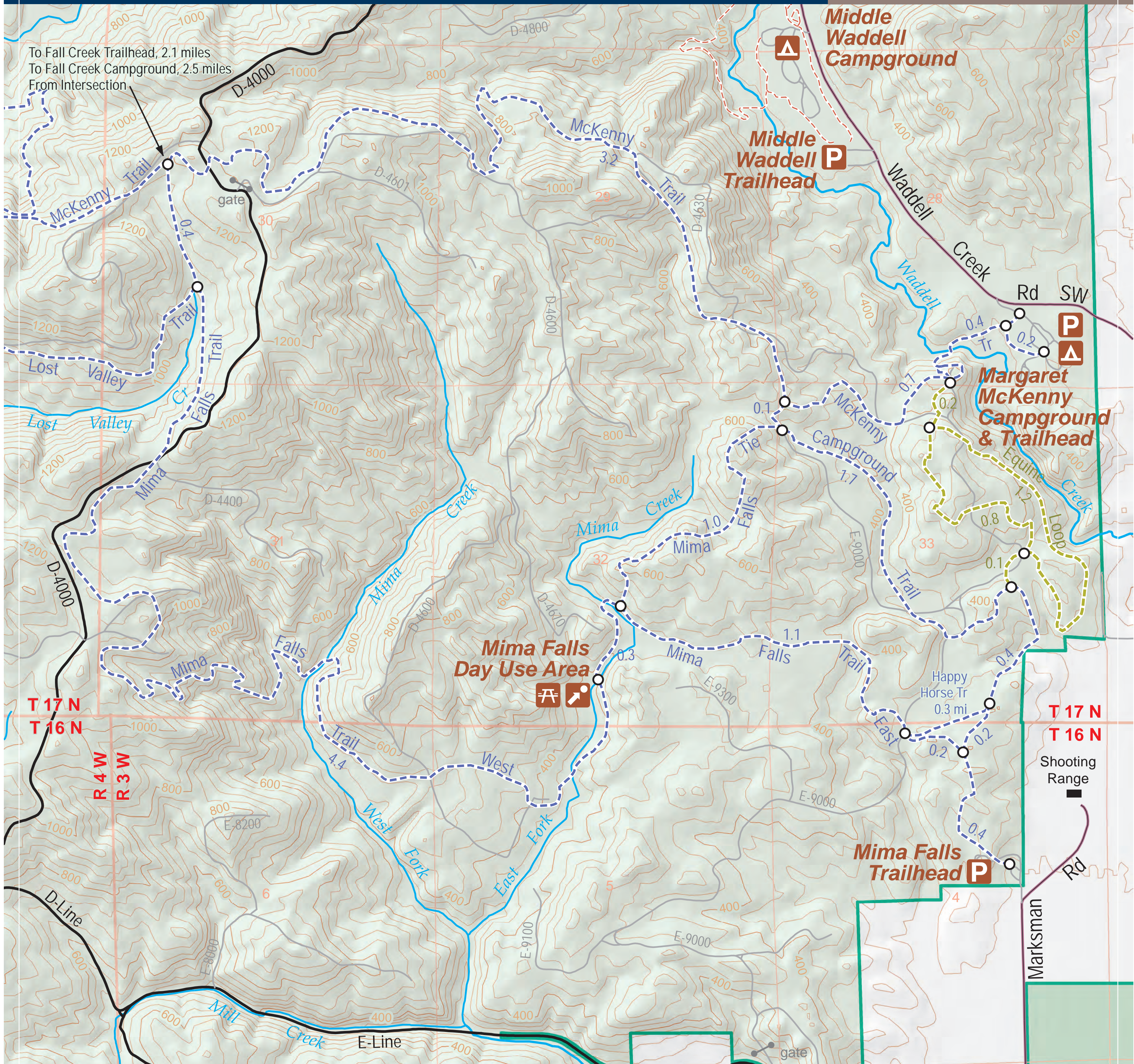


Mima Falls Trail System

Capitol
State
Forest

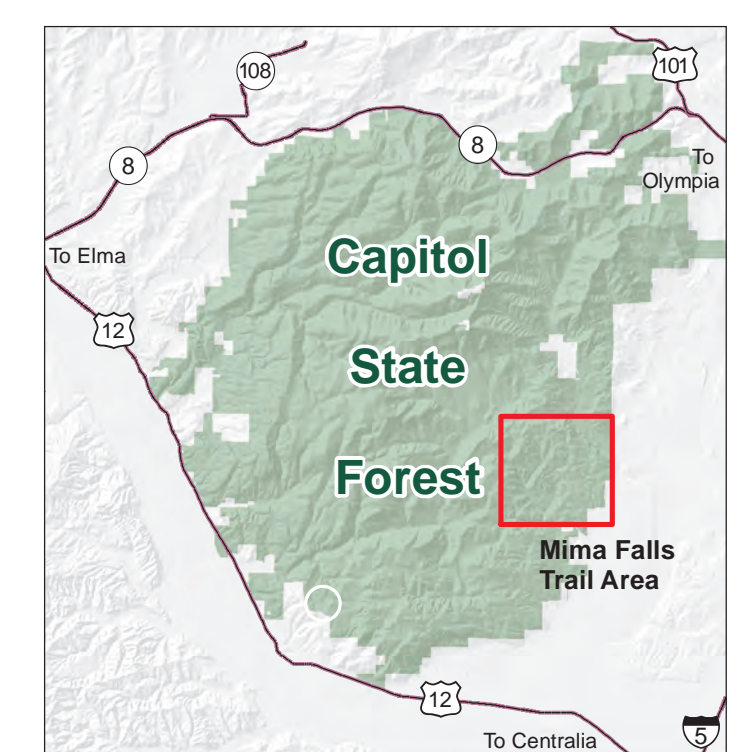


To Fall Creek Trailhead, 2.1 miles
To Fall Creek Campground, 2.5 miles
From Intersection

T 17 N
T 16 N
R 4 W
R 3 W
T 17 N
T 16 N
Shooting Range



Contour Interval 40 feet



- Capitol State Forest
- Mima Mounds Natural Area Preserve
- Mima Falls
- Campground
- Day Use Area
- Parking or Trailhead
- Hike / Mountain Bike / Horse
- Horse / Hike
- ATV / Motorcycle / Hike / Mountain Bike
- Primary Forest Road
- Secondary Forest Road
- County Road
- Trail Mileage



Produced by: DNR's Recreation Section; Communications & Outreach; and South Puget Sound Region, October 2017

Note to map users: Extreme care was used during compilation of this map to ensure accuracy. However, due to changes in ownership and the need to rely on outside sources of information, the Department of Natural Resources cannot accept responsibility for errors or omissions. Therefore, there are no warranties which accompany this material.

dnr.wa.gov