

2009 Green Mountain State Forest Trail System

Public Land

- Dept of Natural Resources Trust Land
- Washington State Dept of Fish and Wildlife
- Municipal Watershed
- County

Road and Trail System

- Primary County Road
- Secondary County Road
- Primary Forest Road
- Forest Road closed to motorized travel
- Trail: Hiking / Horse / Mtn Bike / Motorcycle
- Gate (Some Gates closed seasonally)
- Road Blocked
- 4.0 Mileage

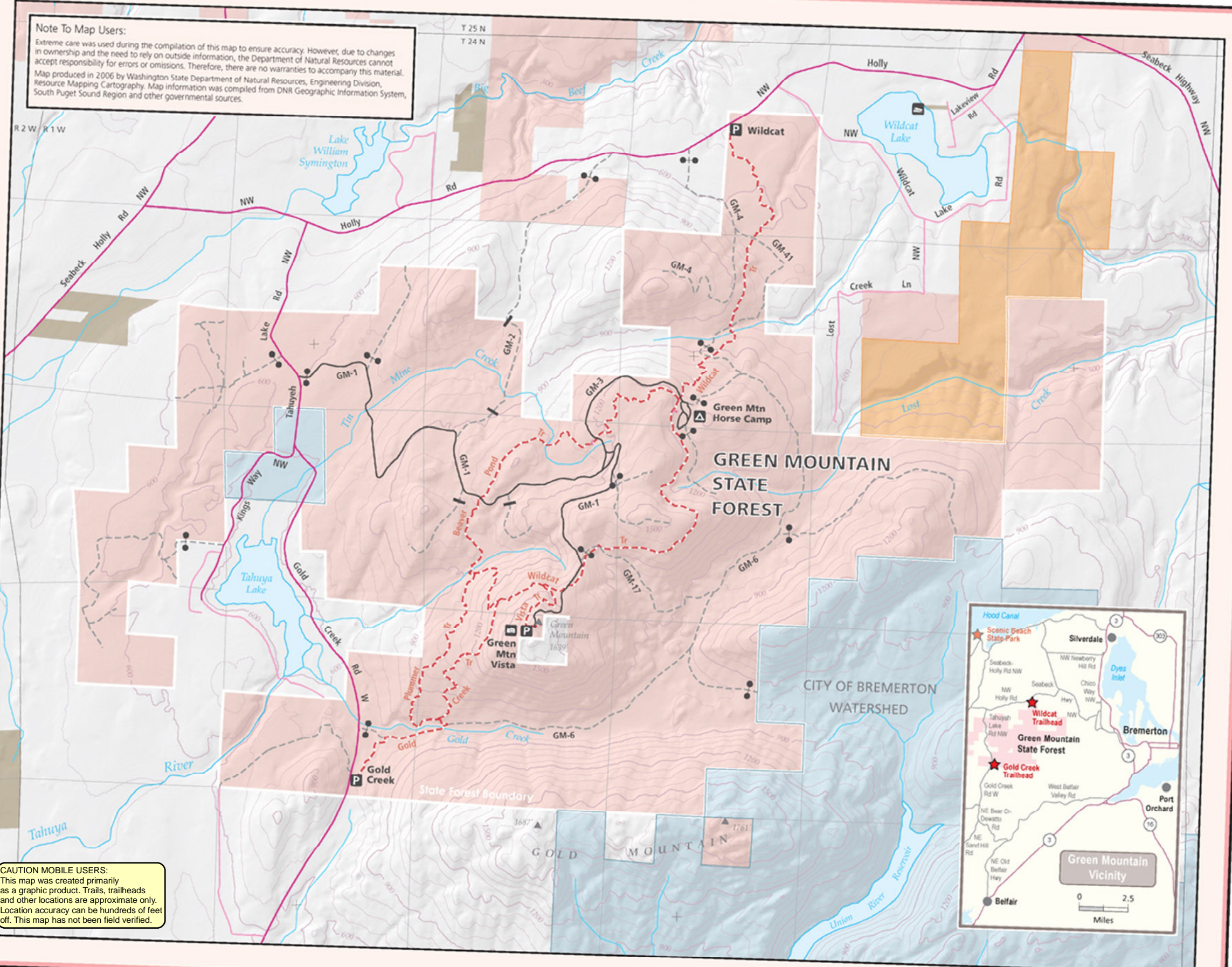
Recreation Sites

- Campground
- Picnic Site
- Trailhead Parking
- Viewpoint

Contour Interval = 75 Feet.

- On DNR Land**
- Fires are only allowed in designated fire pits.
 - Pack out garbage and litter.
 - Do not alter or remove vegetation.
 - Do not ride in streams, muddy areas, wetlands, or on road embankments.
- On DNR Trails**
- Only licensed drivers, street-legal, or valid ORV tagged vehicles are allowed.
 - Riders under the age of 13 years old must be under direct supervision of a person who has a valid drivers license and is at least 18 years of age.
 - Helmet required for motorized vehicles.
 - Stay on signed, DNR-managed trails.
 - Unsigned trails are closed.
 - Respect the rights of others.
 - Watch for unmarked hazards on trails; report hazards.
- In DNR Campgrounds and At DNR Trailheads**
- Camp in designated campsites only.
 - No camping in day use areas.
 - Maintain quiet between 10 p.m. and 6 a.m.
 - Limit your stay to the posted number of days.
 - Do not shoot in or near recreation sites, trails or roads.
 - No garbage service is provided. Pack out garbage and litter.
 - Speed limit is 5 miles per hour.
- Green Mountain Horse Camp - Gates on roads GM-1 and GM-3 are open from June 1 to Oct 15 from 9:00 AM to 6:00 PM on weekends only. Street licensed vehicles only. No ORVs.**
- All other DNR Roads on Green Mountain are closed to motorized use.**
- To report hazards, or for questions call the DNR South Puget Sound Region office at 360-825-1631.

Note To Map Users:
 Extreme care was used during the compilation of this map to ensure accuracy. However, due to changes in ownership and the need to rely on outside information, the Department of Natural Resources cannot accept responsibility for errors or omissions. Therefore, there are no warranties to accompany this material. Map produced in 2006 by Washington State Department of Natural Resources, Engineering Division, Resource Mapping Cartography. Map information was compiled from DNR Geographic Information System, South Puget Sound Region and other governmental sources.



CAUTION MOBILE USERS:
 This map was created primarily as a graphic product. Trails, trailheads and other locations are approximate only. Location accuracy can be hundreds of feet off. This map has not been field verified.

