


Project Area: 5.6 Acres
Cultivation: Approx. 5.2 Acres
Extent based on 10/2023 Survey

 DNR_Lease_AqParcel

Case Inlet



0 335 670 1,340
Feet



REFERENCE:
APPLICANT: Taylor Shellfish
ADJACENT PROPERTY OWNERS:
Please refer to JARPA

Location: T22N, R01W, S28 Lat/
Long: 47.365476 / -122.810455
Page: 1 of 5 **Date:** 11/14/2023

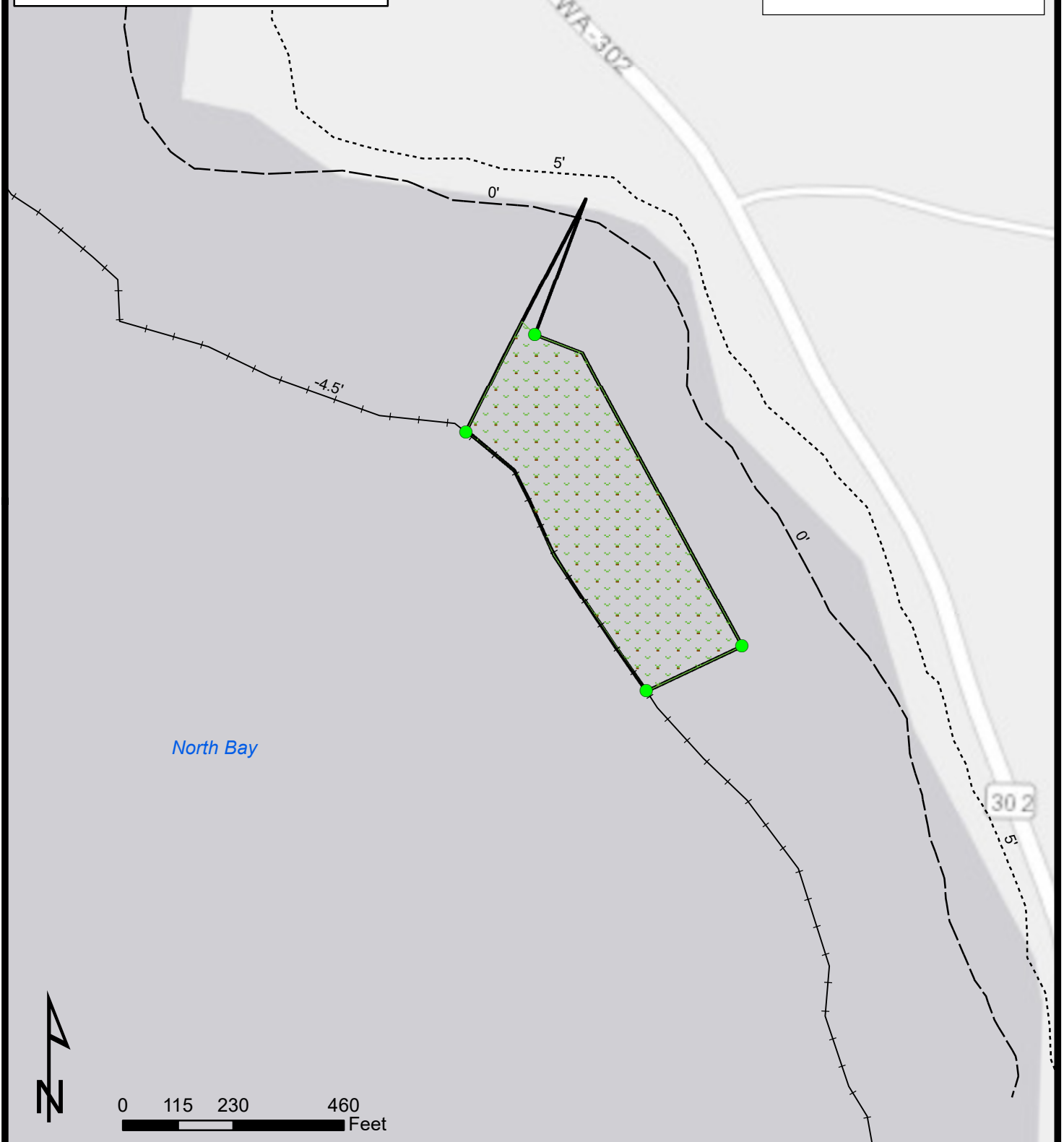
PROPOSED PROJECT: DNR Lease 20-096484
IN: North Bay
Near/At: Victor
County: Mason
State: WA

Document Path: M:\Working\Erin_WorkingMap_Projects\DNR_NorthBay\DNR_NorthBay_Extent.mxd

Project Area: 5.6 Acres
Cultivation: Approx. 5.2 Acres

Extent based on 10/2023 Survey
Survey attached to map package as P3

- Lease Corners
- ▨ Culture
- ▭ DNR_Lease_AqParcel



Document Path: M:\Working\Erin_WorkingMap_Projects\DNR_NorthBay\DNR_NorthBay_Detail.mxd

REFERENCE:
APPLICANT: Taylor Shellfish
ADJACENT PROPERTY OWNERS:
Please refer to JARPA

Location: T22N, R01W, S28 Lat/
Long: 47.365476 / -122.810455
Page: 2 of 5 **Date:** 11/14/2023

PROPOSED PROJECT: DNR Lease 20-096484
IN: North Bay
Near/At: Victor
County: Mason
State: WA

DNR AQUATIC LANDS SURVEY LEASE NO.

LEASE AREA DESCRIPTION:

THAT PORTION OF THE SECOND CLASS TIDELANDS IN CASE INLET LYING BETWEEN THE WESTERLY AND NORTHERLY LINE OF THE JOHN WHERRETT OYSTER TRACT PER VOLUME 2, PAGE 478 OF TIDELAND AND SHORELAND DEEDS ON FILE AT THE OFFICE OF THE COMMISSIONER OF PUBLIC LANDS IN OLYMPIA, WASHINGTON, AND THE LINE OF EXTREME LOW TIDE ABUTTING GOVERNMENT LOT 3 IN THE SOUTHEAST ONE QUARTER OF THE SOUTHEAST QUARTER OF SECTION 28, TOWNSHIP 22 NORTH, RANGE 1 WEST, W.M., IN MASON COUNTY, WASHINGTON, DESCRIBED AS FOLLOWS:

COMMENCING AT THE SOUTHEAST CORNER OF THE SOUTHEAST QUARTER OF SAID SECTION 28;
THENCE ALONG THE SOUTH LINE OF SAID SOUTHEAST QUARTER NORTH 88°13'40" WEST 1415.78 FEET TO THE AXLE MARKING THE MEANDER CORNER BETWEEN FRACTIONAL SECTIONS 28 AND 33 IN SAID TOWNSHIP 22 NORTH, RANGE 1 WEST;
THENCE NORTH 18°01'58" WEST 1796.30 FEET TO THE INTERSECTION OF AFORESAID WESTERLY LINE OF THE WHERRETT OYSTER TRACT AND THE NORTHERLY LINE OF THOSE PRIVATE TIDELANDS PER VOLUME 22, PAGE 733 OF TIDELAND AND SHORELAND DEEDS ON FILE AT THE AFORESAID OFFICE OF THE COMMISSIONER AND THE POINT OF BEGINNING;
THENCE ALONG SAID WESTERLY LINE NORTH 28°25'37" WEST 755.92 FEET;
THENCE CONTINUING ALONG SAID WESTERLY LINE NORTH 69°55'37" WEST 103.93 FEET TO THE NORTHERLY LINE OF SAID OUYSTER TRACT;
THENCE ALONG SAID NORTHERLY LINE NORTH 22°09'23" EAST 283.98 FEET TO A POINT ON THE BALANCED GOVERNMENT MEANDER LINE, SAID POINT BEING THE MOST EASTERLY CORNER OF CARL SMITH OYSTER TRACT PER VOLUME 2, PAGE 375 OF TIDELAND AND SHORELAND DEEDS ON FILE AT THE AFORESAID OFFICE OF THE COMMISSIONER OF PUBLIC LANDS;
THENCE ALONG THE SOUTH LINE OF SAID SMITH OYSTER TRACT AND THE ABUTTING CARL SMITH 2ND CLASS TIDELANDS PER VOLUME 11, PAGE 539 OF TIDELAND AND SHORELAND DEEDS ON FILE AT THE SAID OFFICE OF THE COMMISSIONER OF PUBLIC LANDS AND IT'S EXTENSION SOUTHERLY SOUTH 28°51'45" WEST 774.82 FEET TO THE LINE OF LINE OF EXTREME LOW TIDE;
THENCE ALONG SAIDE TIDE LINE SOUTH 70°34'39" EAST 280.98 FEET;
THENCE NORTH 46°07'52" EAST 55.67 FEET;
THENCE SOUTH 51°27'56" EAST 169.97 FEET;
THENCE SOUTH 29°54'43" EAST 238.80 FEET TO THE NORTHERLY LINE OF AFORESAID PRIVATE TIDELANDS;
THENCE ALONG SAID NORTHERLY LINE NORTH 63°38'29" EAST 186.61 FEET TO THE POINT OF BEGINNING.

GL 2

GL 3

GL 4

FOUND AXLE
PER VOL. 4,
PG 104 OF PLATS
(SISSEON BEACH R/W)

WSP: 4601
N: 752823.48
E: 1066689.99

204.54'
S 88°27'33" E

21°

FOUND AXLE @ MEANDER CORNER
PER VOL. 4, PG 104 OF PLATS
(SISSEON BEACH)

FOUND AXLE, UNKNOW ORIGIN

N 87°33'59" W
54.69'

STATEMENTS OF CLARIFICATION

PER WAC 332-130-145

-THE INTENDED USE OF THIS MAP IS FOR SHELLFISH CULTIVATION LEASE;
-ELEVATIONS DERIVED FROM 3 SOURCES:
1. RTK GPS (SEE DATUM);
2. FIELD LOCATES USING TOTAL STATION;
3. 2019 OLYMPICS SOUTH 3DEP LIDAR
4. SONAR MITE ECHO SOUNDER
-CONTOUR ACCURACY IS 0.25' (95% CI);
-THIS MAP SHOULD NOT BE USED FOR ANY PURPOSE BEYOND THE ORIGINAL INTENT OF THE OWNER AS STATED ABOVE;
-NO UTILITIES WERE SPECIFICALLY CONTRACTED TO BE LOCATED AND NONE WERE FOR THIS SURVEY.

S 22°42'40" E 2905.31'

S 62°02'48" E 131.53'

S 69°47'05" E 468.58'

S 69°47'05" E 220.48'

S 69°47'05" E 248.10'

S 69°47'05" E 283.98'

S 69°47'05" E 103.93'

S 69°47'05" E 774.82'

S 69°47'05" E 300.35'

S 69°47'05" E 107.35'

S 69°47'05" E 103.93'

S 69°47'05" E 774.82'

S 69°47'05" E 300.35'

S 69°47'05" E 107.35'

S 69°47'05" E 103.93'

S 69°47'05" E 774.82'

S 69°47'05" E 300.35'

S 69°47'05" E 107.35'

S 69°47'05" E 103.93'

S 69°47'05" E 774.82'

S 69°47'05" E 300.35'

S 69°47'05" E 107.35'

S 69°47'05" E 103.93'

S 69°47'05" E 774.82'

S 69°47'05" E 300.35'

S 69°47'05" E 107.35'

S 69°47'05" E 103.93'

S 69°47'05" E 774.82'

S 69°47'05" E 300.35'

S 69°47'05" E 107.35'

S 69°47'05" E 103.93'

S 69°47'05" E 774.82'

S 69°47'05" E 300.35'

S 69°47'05" E 107.35'

S 69°47'05" E 103.93'

S 69°47'05" E 774.82'

S 69°47'05" E 300.35'

S 69°47'05" E 107.35'

S 69°47'05" E 103.93'

S 69°47'05" E 774.82'

S 69°47'05" E 300.35'

S 69°47'05" E 107.35'

S 69°47'05" E 103.93'

S 69°47'05" E 774.82'

S 69°47'05" E 300.35'

S 69°47'05" E 107.35'

S 69°47'05" E 103.93'

S 69°47'05" E 774.82'

S 69°47'05" E 300.35'

S 69°47'05" E 107.35'

S 69°47'05" E 103.93'

S 69°47'05" E 774.82'

S 69°47'05" E 300.35'

S 69°47'05" E 107.35'

S 69°47'05" E 103.93'

S 69°47'05" E 774.82'

S 69°47'05" E 300.35'

S 69°47'05" E 107.35'

S 69°47'05" E 103.93'

S 69°47'05" E 774.82'

S 69°47'05" E 300.35'

S 69°47'05" E 107.35'

S 69°47'05" E 103.93'

S 69°47'05" E 774.82'

S 69°47'05" E 300.35'

S 69°47'05" E 107.35'

S 69°47'05" E 103.93'

S 69°47'05" E 774.82'

S 69°47'05" E 300.35'

S 69°47'05" E 107.35'

S 69°47'05" E 103.93'

S 69°47'05" E 774.82'

S 69°47'05" E 300.35'

S 69°47'05" E 107.35'

S 69°47'05" E 103.93'

S 69°47'05" E 774.82'

S 69°47'05" E 300.35'

S 69°47'05" E 107.35'

S 69°47'05" E 103.93'

S 69°47'05" E 774.82'

S 69°47'05" E 300.35'

S 69°47'05" E 107.35'

S 69°47'05" E 103.93'

S 69°47'05" E 774.82'

S 69°47'05" E 300.35'

S 69°47'05" E 107.35'

S 69°47'05" E 103.93'

S 69°47'05" E 774.82'

S 69°47'05" E 300.35'

S 69°47'05" E 107.35'

S 69°47'05" E 103.93'

S 69°47'05" E 774.82'

S 69°47'05" E 300.35'

S 69°47'05" E 107.35'

S 69°47'05" E 103.93'

S 69°47'05" E 774.82'

S 69°47'05" E 300.35'

S 69°47'05" E 107.35'

S 69°47'05" E 103.93'

S 69°47'05" E 774.82'

S 69°47'05" E 300.35'

S 69°47'05" E 107.35'

S 69°47'05" E 103.93'

S 69°47'05" E 774.82'

S 69°47'05" E 300.35'

S 69°47'05" E 107.35'

S 69°47'05" E 103.93'

S 69°47'05" E 774.82'

S 69°47'05" E 300.35'

S 69°47'05" E 107.35'

S 69°47'05" E 103.93'

S 69°47'05" E 774.82'

S 69°47'05" E 300.35'

S 69°47'05" E 107.35'

S 69°47'05" E 103.93'

S 69°47'05" E 774.82'

S 69°47'05" E 300.35'

S 69°47'05" E 107.35'

S 69°47'05" E 103.93'

S 69°47'05" E 774.82'

S 69°47'05" E 300.35'

S 69°47'05" E 107.35'

S 69°47'05" E 103.93'

S 69°47'05" E 774.82'

S 69°47'05" E 300.35'

S 69°47'05" E 107.35'

S 69°47'05" E 103.93'

S 69°47'05" E 774.82'

S 69°47'05" E 300.35'

S 69°47'05" E 107.35'

S 69°47'05" E 103.93'

S 69°47'05" E 774.82'

S 69°47'05" E 300.35'

S 69°47'05" E 107.35'

S 69°47'05" E 103.93'

S 69°47'05" E 774.82'

S 69°47'05" E 300.35'

S 69°47'05" E 107.35'

S 69°47'05" E 103.93'

S 69°47'05" E 774.82'

S 69°47'05" E 300.35'

S 69°47'05" E 107.35'

S 69°47'05" E 103.93'

S 69°47'05" E 774.82'

S 69°47'05" E 300.35'

S 69°47'05" E 107.35'

S 69°47'05" E 103.93'

S 69°47'05" E 774.82'

S 69°47'05" E 300.35'

S 69°47'05" E 107.35'

S 69°47'05" E 103.93'

S 69°47'05" E 774.82'

S 69°47'05" E 300.35'

S 69°47'05" E 107.35'

S 69°47'05" E 103.93'

S 69°47'05" E 774.82'

S 69°47'05" E 300.35'

S 69°47'05" E 107.35'

S 69°47'05" E 103.93'

S 69°47'05" E 774.82'

S 69°47'05" E 300.35'

S 69°47'05" E 107.35'

S 69°47'05" E 103.93'

S 69°47'05" E 774.82'

S 69°47'05" E 300.35'

S 69°47'05" E 107.35'

S 69°47'05" E 103.93'

S 69°47'05" E 774.82'

S 69°47'05" E 300.35'

S 69°47'05" E 107.35'

S 69°47'05" E 103.93'

S 69°47'05" E 774.82'

S 69°47'05" E 300.35'

S 69°47'05" E 107.35'

S 69°47'05" E 103.93'

S 69°47'05" E 774.82'

S 69°47'05" E 300.35'

S 69°47'05" E 107.35'

S 69°47'05" E 103.93'

S 69°47'05" E 774.82'

S 69°47'05" E 300.35'

S 69°47'05" E 107.35'

S 69°47'05" E 103.93'

S 69°47'05" E 774.82'

S 69°47'05" E 300.35'

S 69°47'05" E 107.35'

S 69°47'05" E 103.93'

S 69°47'05" E 774.82'

S 69°47'05" E 300.35'

S 69°47'05" E 107.35'

S 69°47'05" E 103.93'

S 69°47'05" E 774.82'

S 69°47'05" E 300.35'

S 69°47'05" E 107.35'

S 69°47'05" E 103.93'

S 69°47'05" E 774.82'

S 69°47'05" E 300.35'

S 69°47'05" E 107.35'

S 69°47'05" E 103.93'

S 69°47'05" E 774.82'

S 69°47'05" E 300.35'

S 69°47'05" E 107.35'

S 69°47'05" E 103.93'

S 69°47'05" E 774.82'

S 69°47'05" E 300.35'

S 69°47'05" E 107.35'

S 69°47'05" E 103.93'

S 69°47'05" E 774.82'

S 69°47'05" E 300.35'

S 69°47'05" E 107.35'

Typical Cross Section of Geoduck Planting with Mesh Tubes

MHHW +14'

Upper edge planted at 0'

Tubes are inserted into the substrate
12 – 15" off center. Area net is not
used over mesh tubes.

Planting will not occur below
extreme low, -4.5' tidal elevation

Reference:

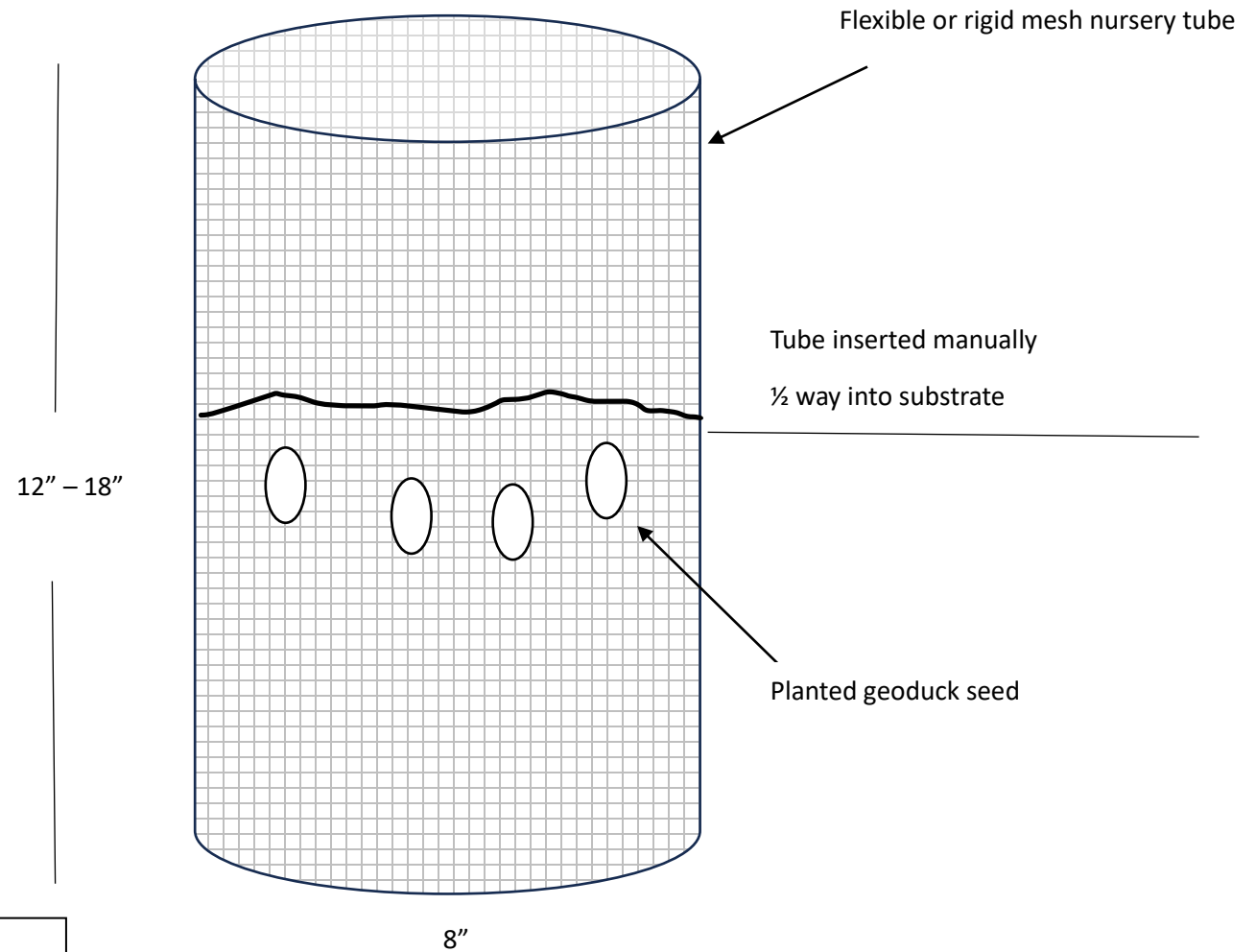
Applicant Name: Taylor Shellfish

Project: DNR Lease 20-096484

Location: North Bay

Sheet 4 of 5 Date: 11/14/2023

Taylor Shellfish Farms Geoduck Culture
Cross-Section of HDPE mesh nursery tube



Reference:

Applicant Name: Taylor Shellfish

Project: DNR Lease 20-096484

Location: North Bay

Sheet 5 of 5 Date: 11/16/2023