



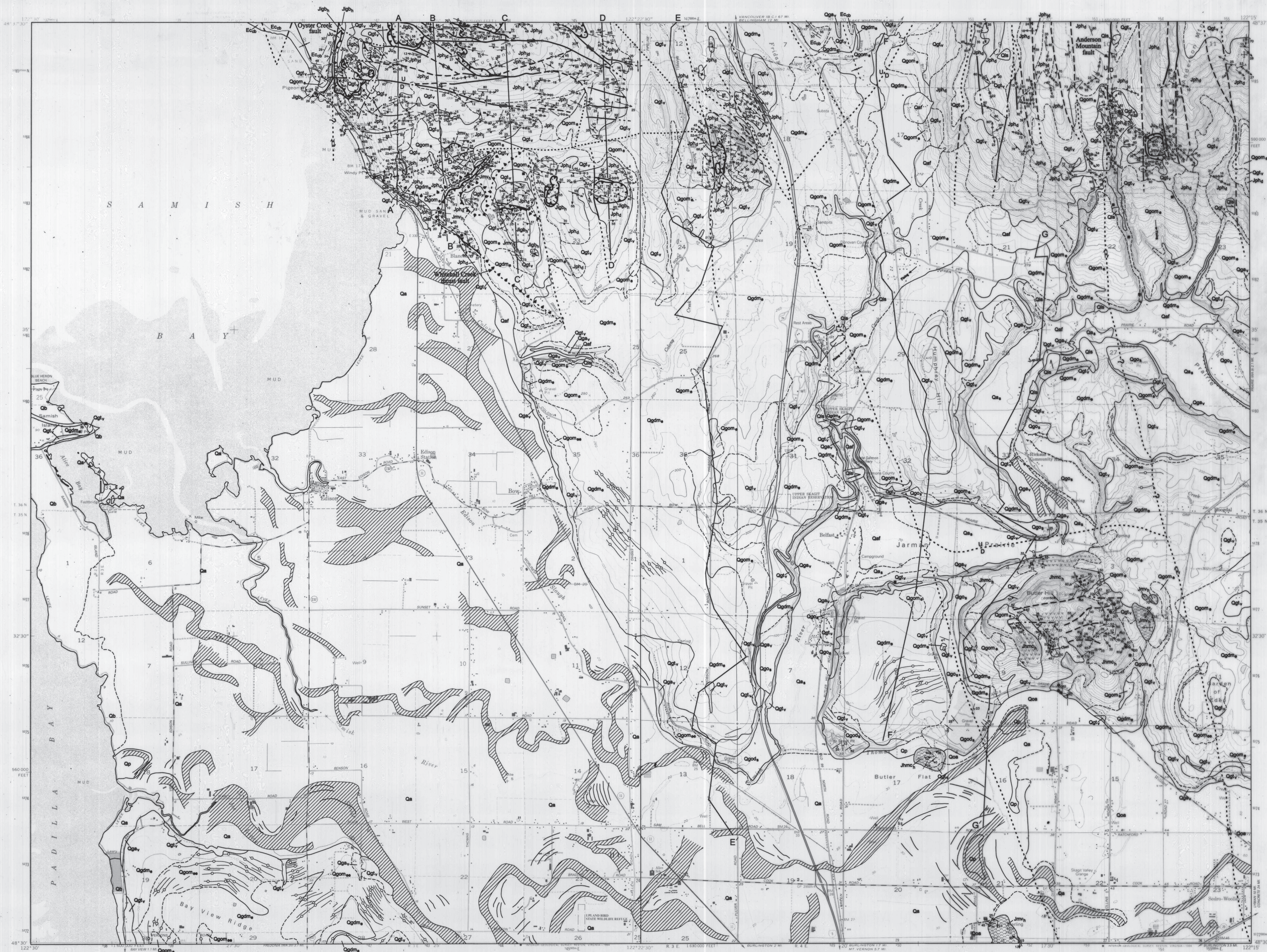
Produced in cooperation with the U.S. Geological Survey
National Cooperative Geologic Mapping Program
Agreement Number 1434-HQ-97-AG-01809

Geologic Map of the Bow and Alger 7.5-minute Quadrangles, Western Skagit County, Washington

Joe D. Dragovich, David K. Norman, Carly L. Grisamer,
Robert L. Logan, and Garth Anderson
1998

Alger Quadrangle

WASHINGTON DIVISION OF GEOLOGY AND EARTH RESOURCES
Raymond Lasmanis, State Geologist
PLATE 1
OPEN FILE REPORT 98-5
GEOLOGIC MAP AND INTERPRETED GEOLOGIC HISTORY OF
THE BOW AND ALGER 7.5-MINUTE QUADRANGLES,
WESTERN SKAGIT COUNTY, WASHINGTON



Base map by U.S. Geological Survey
Control by USGS and NOS/NOAA
Compiled from aerial photography taken 1949 (Bow), and 1951 (Alger)
Both quadrangles revised in 1989, and edited in 1994
Lambert Conformal Conic Projection. 1927 North American Datum.
10,000-foot ties based on Washington Coordinate System, North zone
1000-meter Universal Transverse Mercator grid ticks, zone 10
1983 North American Datum is shown by dashed corner ticks

