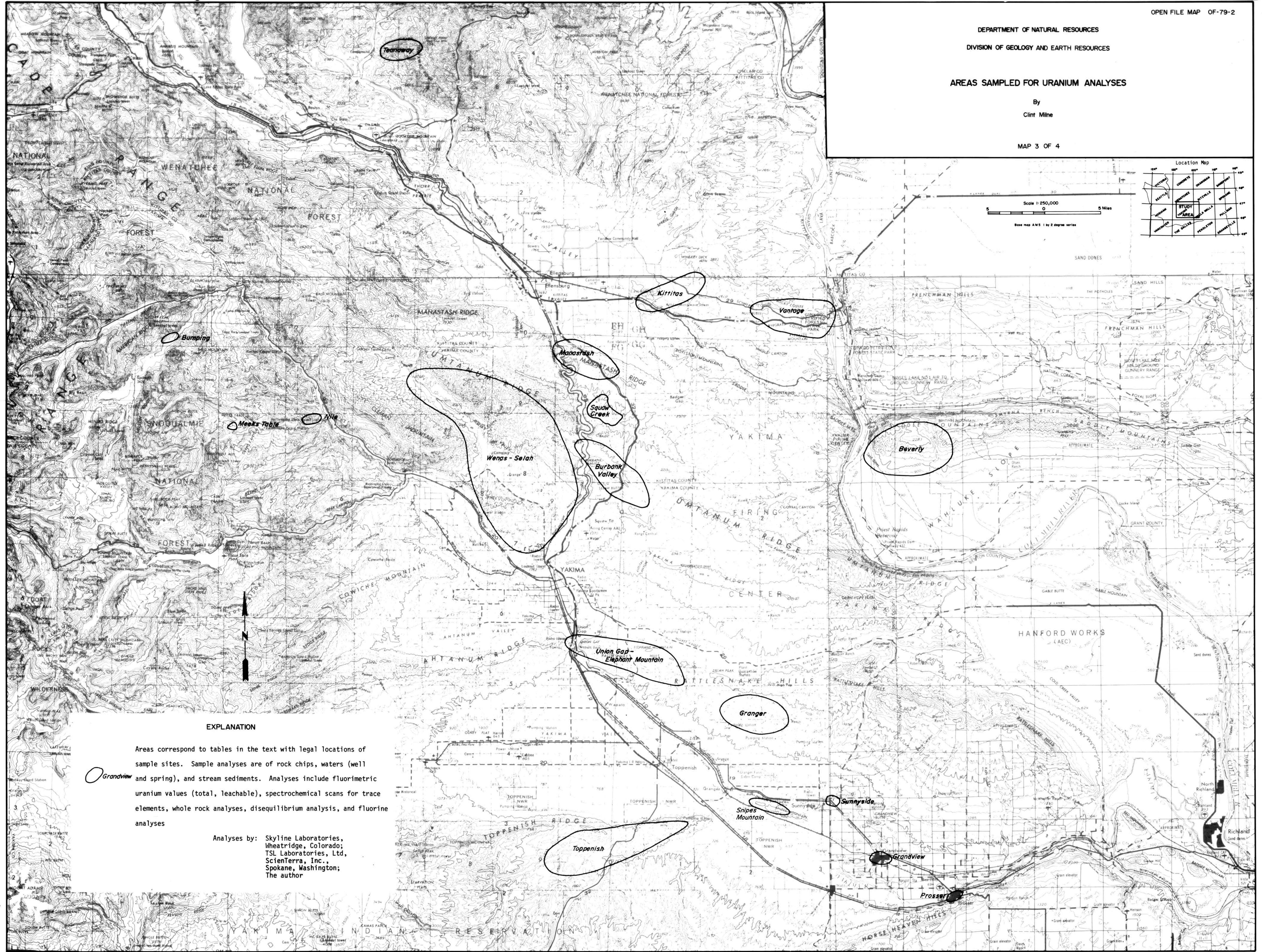
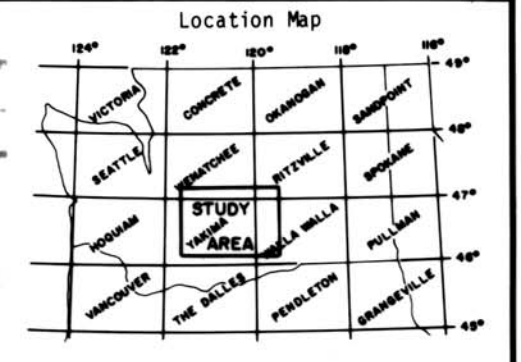
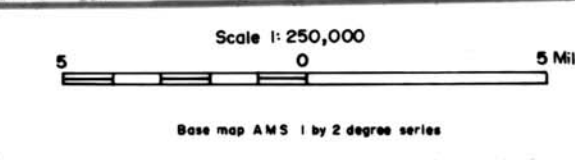


DEPARTMENT OF NATURAL RESOURCES  
DIVISION OF GEOLOGY AND EARTH RESOURCES

AREAS SAMPLED FOR URANIUM ANALYSES

By  
Clint Milne

MAP 3 OF 4



EXPLANATION

Areas correspond to tables in the text with legal locations of sample sites. Sample analyses are of rock chips, waters (well and spring), and stream sediments. Analyses include fluorimetric uranium values (total, leachable), spectrochemical scans for trace elements, whole rock analyses, disequilibrium analysis, and fluorine analyses



Analyses by: Skyline Laboratories, Wheatridge, Colorado; TSL Laboratories, Ltd, Scienterra, Inc., Spokane, Washington; The author