

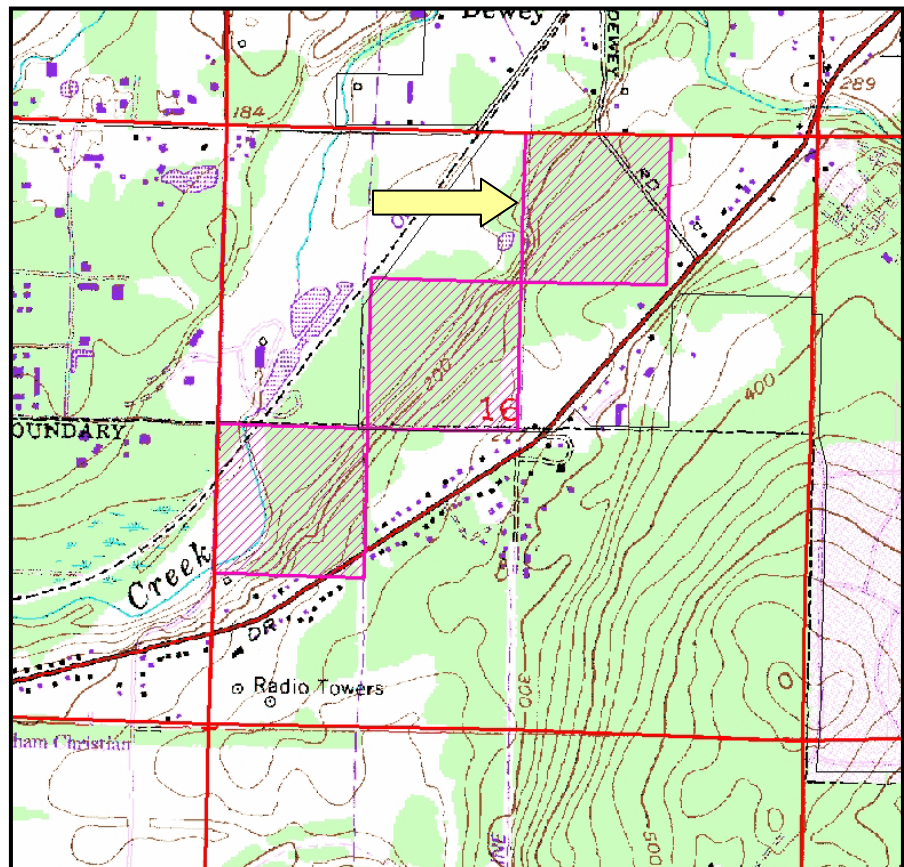


WASHINGTON STATE DEPARTMENT OF
Natural Resources
PETER GOLDMARK - Commissioner of Public Lands

State Trust Parcel in Whatcom County

NE Bellingham 40

PARCEL NUMBERS: 380316328464
LEGAL DESCRIPTION: 16-38N-3E
LOCATION: County (Bellingham UGA)
SIZE: 40 Acres
SURROUNDING LAND USES: Residential
ZONING: UR4
ACCESS: Public



This information has been obtained from sources considered reliable but the State specifically disclaims any warranties, express or implied, that the information provided herein is accurate. Information may be changed without notice.