



WASHINGTON STATE DEPARTMENT OF
Natural Resources
PETER GOLDMARK - Commissioner of Public Lands

State Trust Parcel in King County

PACIFIC 29

PARCEL NUMBERS: 36210490063, 3621049005, 3621049008, 3621049007

LEGAL DESCRIPTION: 36-21N-4E

LOCATION: 310, 340 and 360 Milwaukee Ave N, Cities of Algona & Pacific

SIZE: 29 Acres

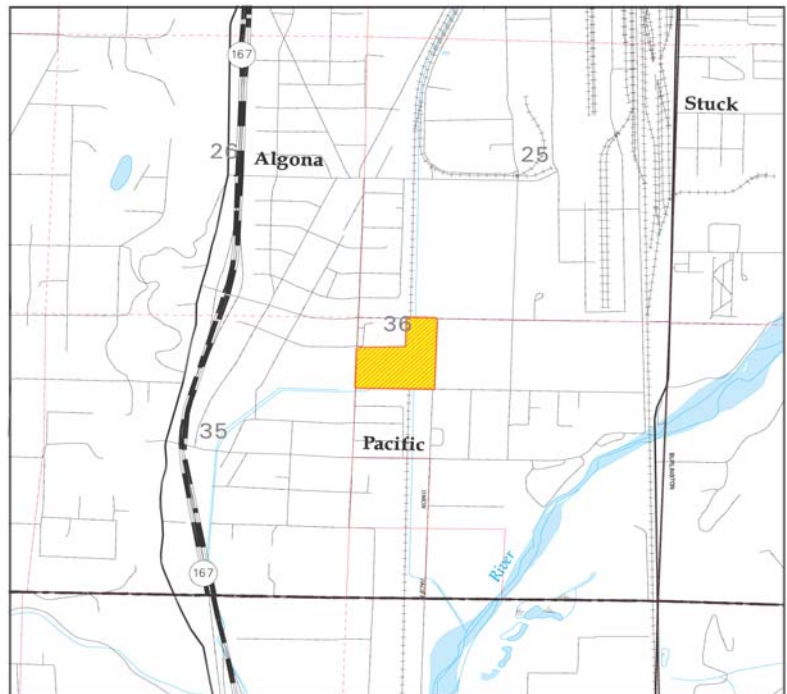
SURROUNDING LAND USES: Residential, School, Railroad

ZONING (City): P and OS/CA

ACCESS: City street

UTILITIES

| | |
|--------|-----------|
| Water: | Public |
| Sewer: | Public |
| Power: | Available |



This information has been obtained from sources considered reliable but the State specifically disclaims any warranties, express or implied, that the information provided herein is accurate. Information may be changed without notice.