

---

# Western Yacolt Recreation Plan

## **Recreation Land Suitability**

---

# Recreation Land Suitability

*Identify and map areas with long- term limiting factors that affect recreation planning*

**Biological Criteria**

**Soil & Geology Criteria**

**Management Criteria**

# Overview

- 1) Review soil & geologic criteria**
- 2) Review management criteria**
- 3) Review composites of biological, soils/ geology, and management by use type**

# Terms for Soil & Geologic Suitability

Low Suitability= Areas with long-term limiting factors. These primarily include areas with potential for mass wasting, erosion, slope instability, or poorly drained soils

Moderate Suitability= Areas where less mitigation and potential for impact exists compared to low suitability

# Soil & Geologic Criteria\*

*Soil Erodibility*

*Potential for Mass Wasting*

*Slope Stability*

*Slope Steepness*

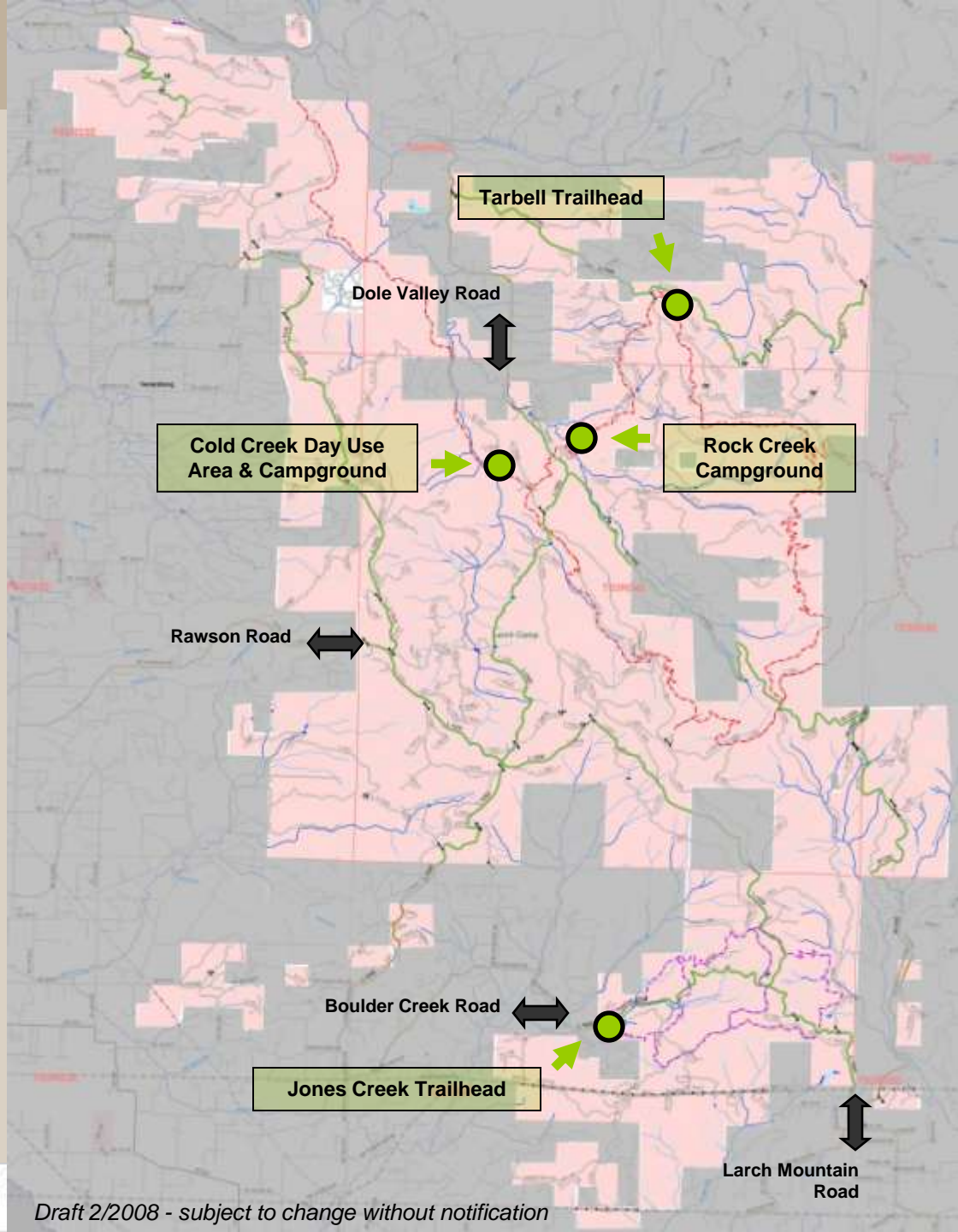
*Flood Plains*

*Soil Drainage*

## Recreation Planning Area

● Existing Recreation Facilities

↔ Main Access Roads



# Western Yacolt Recreation Plan

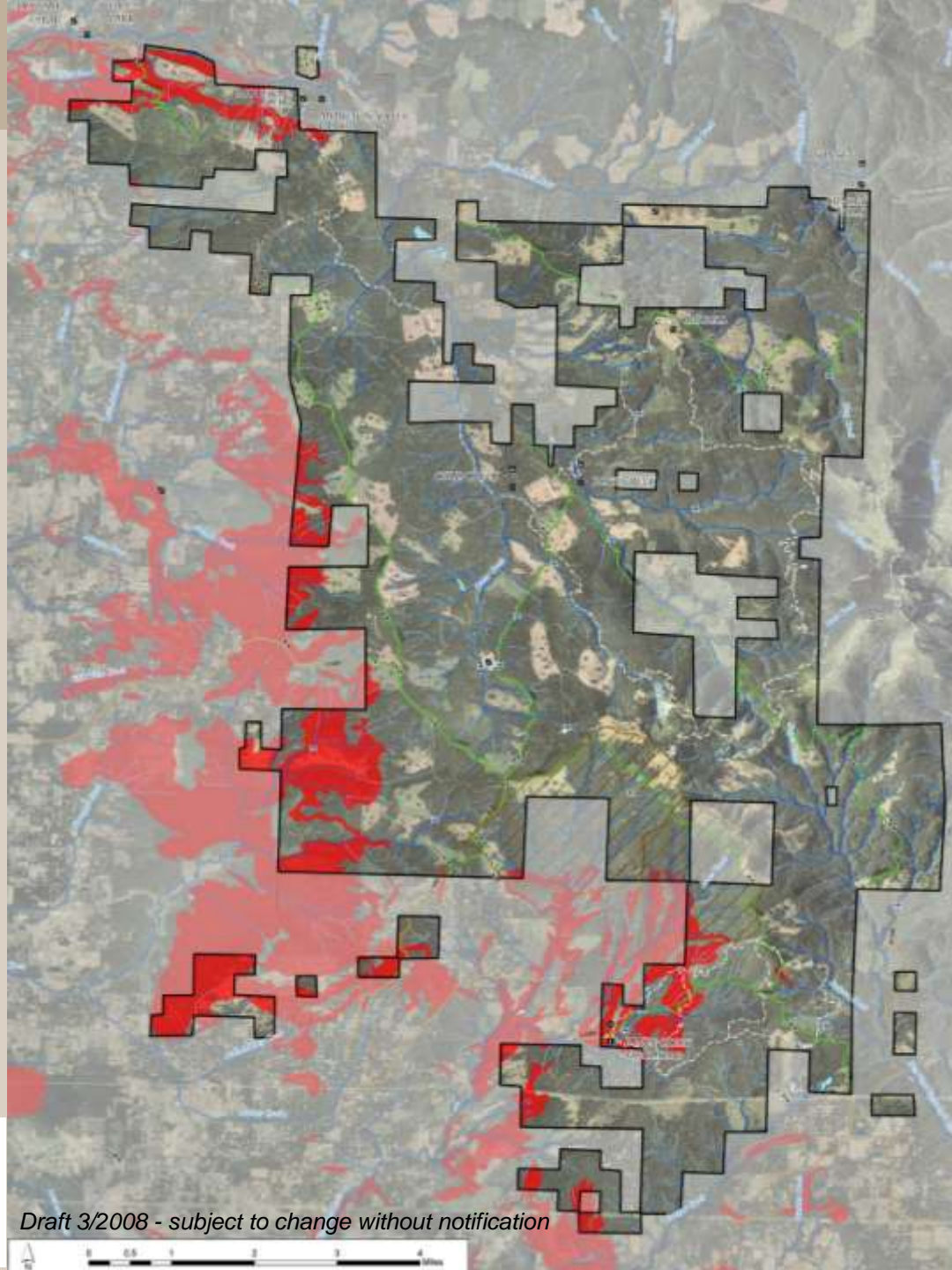
## Recreation Land Suitability

### SOILS / GEOLOGY

*Long-term Limiting Factors/ Low Suitability*

 **Soils with High Erosion Potential**

Source:  
ROPA Database  
WA DNR Soils Erosion Potential  
Layer  
– Highly Erodible



**DRAFT**

March 2008

WA DNR Soils Erosion Potential Layer - Highly Erodible

●	Compass	■	Water Bodies	■	Water Channel	■	Clear Riparian Buffer	■	Soils - Highly Erodible
■	Archeological	■	Soils - Very Erodible	■	Soils - Moderately Erodible	■	Soils - Low Erodible	■	Soils - Very Low Erodible
■	Rock Area	■	Soils - Very Low Erodible	■	Soils - Very Low Erodible	■	Soils - Very Low Erodible	■	Soils - Very Low Erodible
■	Rock of Interest	■	Soils - Very Low Erodible	■	Soils - Very Low Erodible	■	Soils - Very Low Erodible	■	Soils - Very Low Erodible
■	Fluvial or Tidal	■	Soils - Very Low Erodible	■	Soils - Very Low Erodible	■	Soils - Very Low Erodible	■	Soils - Very Low Erodible
■	Fluvial or Tidal	■	Soils - Very Low Erodible	■	Soils - Very Low Erodible	■	Soils - Very Low Erodible	■	Soils - Very Low Erodible
■	Rock of Interest	■	Soils - Very Low Erodible	■	Soils - Very Low Erodible	■	Soils - Very Low Erodible	■	Soils - Very Low Erodible
■	Rock of Interest	■	Soils - Very Low Erodible	■	Soils - Very Low Erodible	■	Soils - Very Low Erodible	■	Soils - Very Low Erodible
■	Rock of Interest	■	Soils - Very Low Erodible	■	Soils - Very Low Erodible	■	Soils - Very Low Erodible	■	Soils - Very Low Erodible
■	Rock of Interest	■	Soils - Very Low Erodible	■	Soils - Very Low Erodible	■	Soils - Very Low Erodible	■	Soils - Very Low Erodible

WA DNR Soils Erosion Potential Layer - Highly Erodible

Draft 3/2008 - subject to change without notification

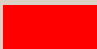


## Recreation Land Suitability

### SOILS / GEOLOGY

*Long-term Limiting Factors / Low Suitability*

### Mass Wasting

 **High Potential for Mass Wasting = Low Suitability**

Source:

ROPA Soils SV Database  
WA DNR Mass Wasting Potential Layer  
– High Mass Wasting



Draft 3/2008 - subject to change without notification

## Recreation Land Suitability

### SOILS / GEOLOGY

*Long-term Limiting Factors/ Low Suitability*

**High Potential for Slope Instability**

Source:  
WA DNR Raster Grid Layer  
– High Probability of Slope Instability



Draft 3/2008 - subject to change without notification

**DRAFT**

March 2008 (Draft) - This map is not for sale and is not to be used for any purpose other than that for which it was prepared. It is the property of the Washington Department of Natural Resources and is loaned to you for your use only. It is not to be reproduced, stored in a retrieval system, or transmitted in any form or by any means, electronic, mechanical, photocopying, recording, or by any information storage and retrieval system, without the prior written permission of the Washington Department of Natural Resources.

Legend	Symbol	Description
Water	Blue	Water
High Suitability	Green	High Suitability
Low Suitability	Grey	Low Suitability
High Potential for Slope Instability	Red	High Potential for Slope Instability

Scale: 0 0.5 1.0 1.5 2.0 Miles



# Western Yacolt Recreation Plan

## Recreation Land Suitability

### SOILS / GEOLOGY

*Long-term Limiting Factors/ Low Suitability*

 **100 Year Flood Plains**

Source:  
FEMA Flood Zone Designation



**DRAFT**

March 2008 (Draft) - This map is a preliminary product and is not for use in any legal proceeding. It is intended for informational purposes only. The information on this map is based on the best available data at the time of publication. The information on this map is not a warranty, representation, or guarantee of accuracy. The information on this map is not a substitute for a professional survey or other professional services. The information on this map is not a substitute for a professional survey or other professional services.

Legend	Water	Soils	Geology	Other
● Unimproved	Blue Water	● Very Poor	● Very Poor	● Very Poor
● Improved	Blue Water	● Poor	● Poor	● Very Poor
● Private	Blue Water	● Fair	● Fair	● Very Poor
● Public	Blue Water	● Good	● Good	● Very Poor
● Other	Blue Water	● Very Good	● Very Good	● Very Poor
● Other	Blue Water	● Excellent	● Excellent	● Very Poor

Scale: 0 0.5 1 1.5 2 Miles



## Western Yacolt Recreation Plan Suitability Matrix

### SOILS & GEOLOGIC CRITERIA- *Long Term Limiting Factors*

	Recreation Facilities	Recreation Trails
<b>Soils with High Erosion Potential</b>	Low Suitability*	Low Suitability*
<b>Areas with High Potential for Mass Wasting</b>	Low Suitability*	Low Suitability*
<b>High Potential for Unstable Slopes</b>	Low Suitability*	Low Suitability*
<b>Slope Percentage</b>	Low Suitability in areas >30% slope Moderate Suitability in areas 15%-30% slope	Low Suitability in areas >65% slope Moderate Suitability in areas 30%- 65% slope
<b>100 year Flood Plains</b>	Low Suitability	Low Suitability
<b>Poorly Drained Soils</b>	Low Suitability	Low Suitability

*\*Site-specific field assessment would be necessary to make final determination*

*Draft- 3-08 Subject to change without notice- This matrix is based on information available to date.*

# Soils & Geology Composite Categories

## Recreation Facilities

### All Trails

- *Hiker Only Trails*
- *Non Motorized Trails*
- *ORV Trails*

# Western Yacolt Recreation Plan

## Recreation Land Suitability

### SOILS / GEOLOGY COMPOSITE

*Long-term Limiting Factors*

for

### *Recreation Facilities*



Draft 3/2008 - subject to change without notification





# Recreation Land Suitability

*Identify and map areas with long- term limiting factors that affect recreation planning*

**Biological Criteria**

**Geology & Soil Criteria**

**Management Criteria**

# Terms for Management Suitability

Low Suitability= Areas with long-term limiting factors. These primarily include social / political concerns and areas with leases / easements

Moderate Suitability= Areas where less potential for concern exists compared to low suitability

# Management Criteria\*

*Communication Sites*

*Rock Sources*

*Proximity to Correctional Facility*

*Areas with Leases & Easements*

*Potential for Trespass on Private Lands*

*Noise Considerations*

*Cultural / Archaeological Resources*

## Recreation Land Suitability

### MANAGEMENT

*Long-term Limiting  
Factors/ Low Suitability*

 **Communication Sites**

Source: Ropa Datsbase  
WA DNR PC Region Shared  
Communication Sites Layer

 **Rock Sources**

Source: WA DNR Geology Division



# Western Yacolt Recreation Plan

## Recreation Land Suitability

### MANAGEMENT

*Long-term Limiting Factors/ Low Suitability*

### Proximity to Correctional Facility

● 0 - 1000'

● 1000'- 1 Mile

Source:  
WA DNR Recreation Program  
Layer



# Western Yacolt Recreation Plan

## Recreation Land Suitability

### MANAGEMENT

*Long-term Limiting Factors/ Low Suitability*

### Leases & Easements

#### Utility Easements

Source: Ropa Database  
BPA Right-of-Way  
& Transmission Lines

#### Military Leased Land

Source: Ropa Database  
WA DNR PC Region  
Lease Sites Layer

*\*This information includes utility easements and military leased lands only. Other leases and easements will be considered and reviewed on a case by case basis for each site-specific project.*



Draft 3/2008 - subject to change without notification

Garitas



# Western Yacolt Recreation Plan

## Recreation Land Suitability

### MANAGEMENT

*Long-term Limiting Factors/ Low Suitability*

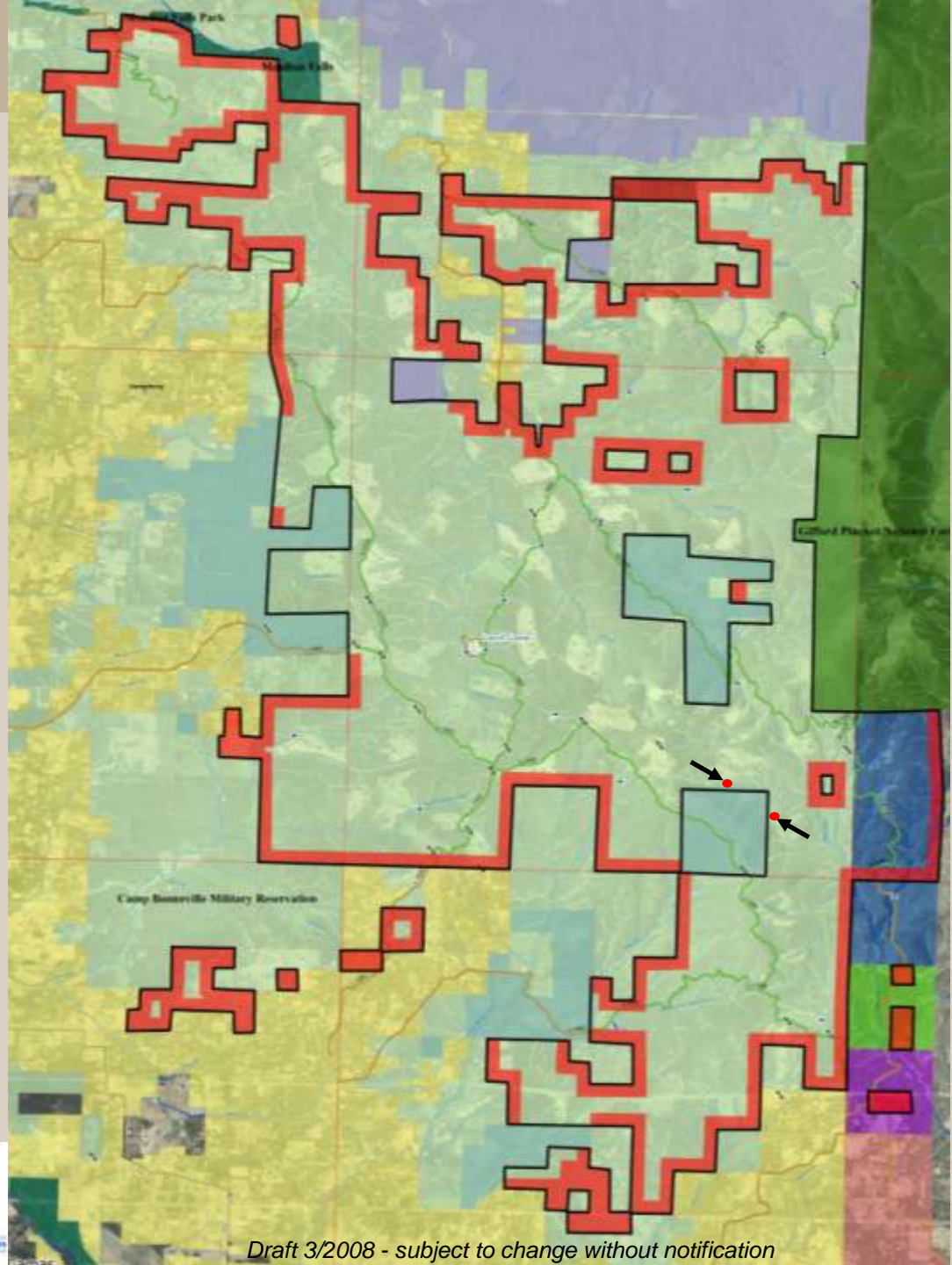
## Adjacent / Surrounding Private Lands

### ■ Noise Considerations\*

Source: DNR Recreation Program Layer, derived from Clark County Zoning Data

### ● ↖ Reduce Potential for Trespass (example only)

\*Representational area only- pending detailed noise evaluation



Criteria also included

# Known Cultural / Archaeological Sites

Source:

DNR Archaeologists & Department of Archaeology  
& Historic Preservation DAHP Probability Modeling

## Western Yacolt Recreation Plan Suitability Matrix

### MANAGEMENT CRITERIA- *Long Term Limiting Factors*

	Recreation Facilities	Recreation Trails
<b>Communication Sites</b>	Low Suitability within 1000' ***	Low Suitability within 300' ***
<b>Rock Sources</b>	Not Suitable on or within 1000' ***	Not Suitable on Site and within clearing limits Low Suitability within 500' ***
<b>Proximity to Correctional Facility</b>	Not Suitable within 1 mile	Not Suitable within 500' Low Suitability between 500' - 1000'
<b>Areas with Leases &amp; Easements*</b>	Not Suitable on Military Leased Lands Low Suitability within Utility leased areas	Not Suitable on Military Leased Lands Low Suitability within Utility leased areas
<b>Noise Considerations</b>	Low Suitability for facilities near private lands**	Low Suitability for ORV trails near private lands**
<b>Cultural / Archaeological Resources</b>	Survey needed if in high probability area	Survey needed if in high probability area

*\*This information includes utility and military leased lands only. Other leases and easements will be considered and reviewed on a case by case basis for each site-specific project.*

*\*\*800' buffers from private lands are used in this assessment until a more detailed noise evaluation is completed.*

*\*\*\*Could be greater distance depending on terrain and/ or road access. These areas need case by case evaluations.*

*Draft- 3-08 Subject to change without notice- This matrix is based on information available to date.*

# Management Composite Categories

**Recreation Facilities**

**ORV Trails**

**Hiker and Non Motorized Trails**



# Western Yacolt Recreation Plan

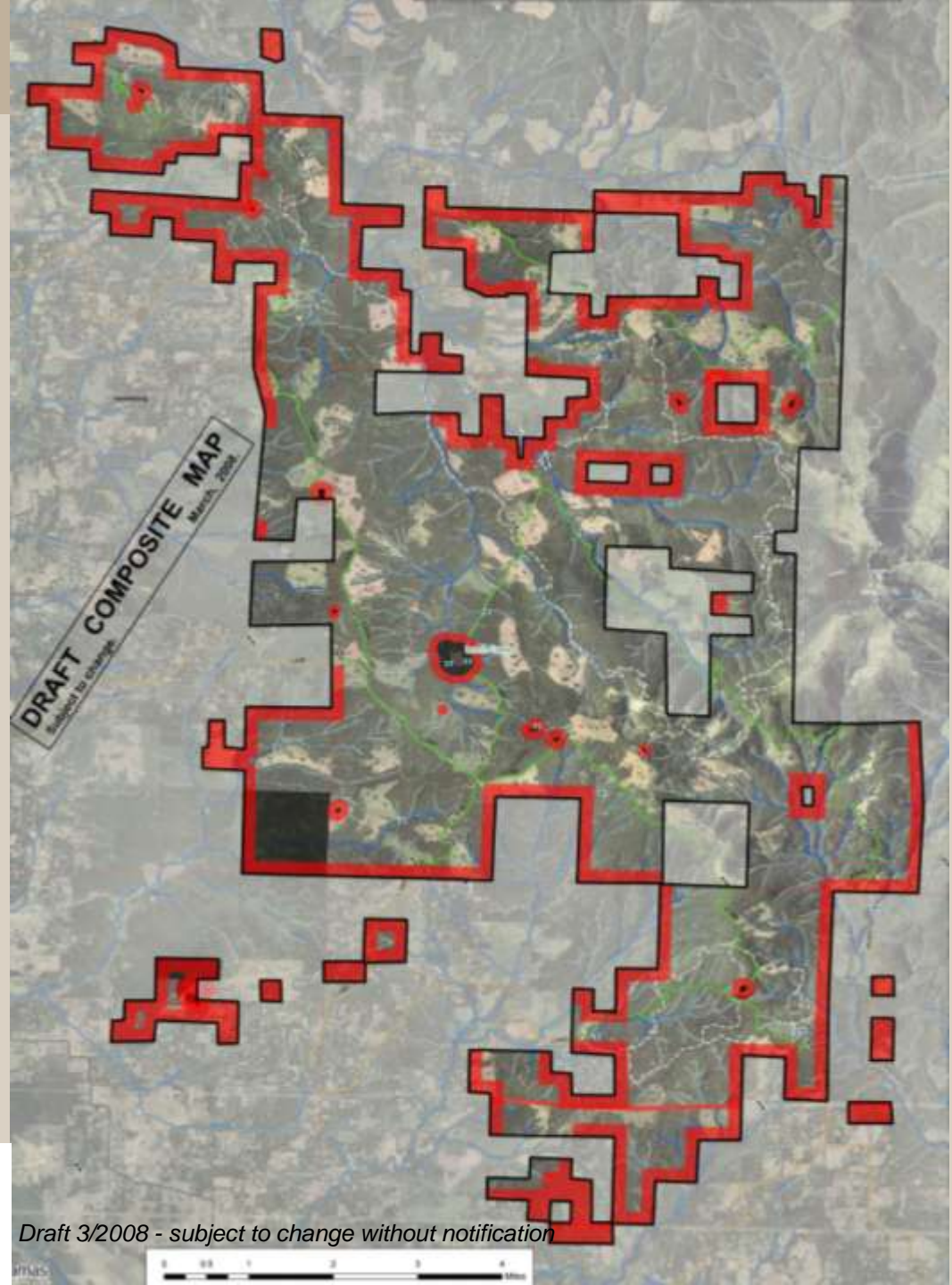
## Recreation Land Suitability

### MANAGEMENT

*Long-term Limiting Factors*

*for*

***ORV Trails***



Draft 3/2008 - subject to change without notification

**THIS MAP IS FOR PLANNING PURPOSES ONLY**  
This area is not intended to be used for legal purposes and should not be used for any legal matter.

**DRAFT**

**1:00,000 Scale**

- Legend items include: County boundaries, City boundaries, Water bodies, Highways, Railroads, and various land use categories.

# Western Yacolt Recreation Plan

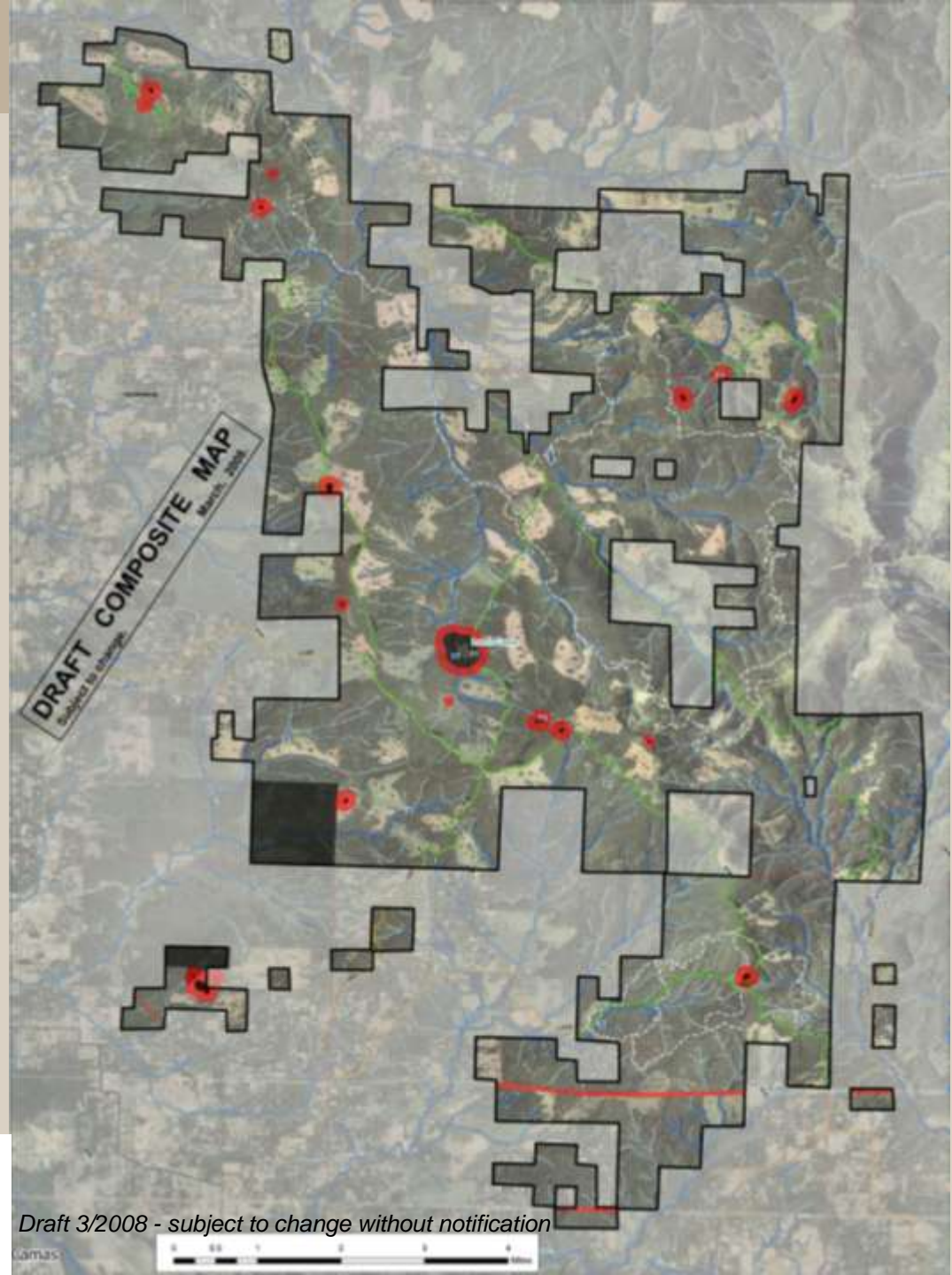
## Recreation Land Suitability

### MANAGEMENT

*Long-term Limiting Factors*

for

## *Hiking and Non Motorized Trails*



Draft 3/2008 - subject to change without notification

**THIS MAP IS FOR PLANNING PURPOSES ONLY**  
This area is not intended to represent any specific land status and does not constitute any legal notice.

**DRAFT**

**FOR JOB 800**  
NON RECREATION  
LOW SUITABILITY

Legend	Legend	Legend
Competition	Water Bodies	Trail
Recreation Land	Wetlands	Trail 1
Highway	Wetlands	Trail 2
Highway	Wetlands	Trail 3
Highway	Wetlands	Trail 4
Highway	Wetlands	Trail 5
Highway	Wetlands	Trail 6
Highway	Wetlands	Trail 7
Highway	Wetlands	Trail 8
Highway	Wetlands	Trail 9
Highway	Wetlands	Trail 10
Highway	Wetlands	Trail 11
Highway	Wetlands	Trail 12
Highway	Wetlands	Trail 13
Highway	Wetlands	Trail 14
Highway	Wetlands	Trail 15
Highway	Wetlands	Trail 16
Highway	Wetlands	Trail 17
Highway	Wetlands	Trail 18
Highway	Wetlands	Trail 19
Highway	Wetlands	Trail 20

Additional considerations

**Road Access**

**Long Term Maintenance**

**Cultural Resource Probability**

**Enforcement Feasibility**

**Planning on Adjacent Lands**

- *Clark & Skamania Counties*
- *Gifford Pinchot National Forest*

**Other...**

# Biological, Soils / Geology, Management Composite Categories

**Recreation Facilities**

**ORV Trails**

**Non Motorized Trails**

**Hiking Trails**

# Western Yacolt Recreation Plan

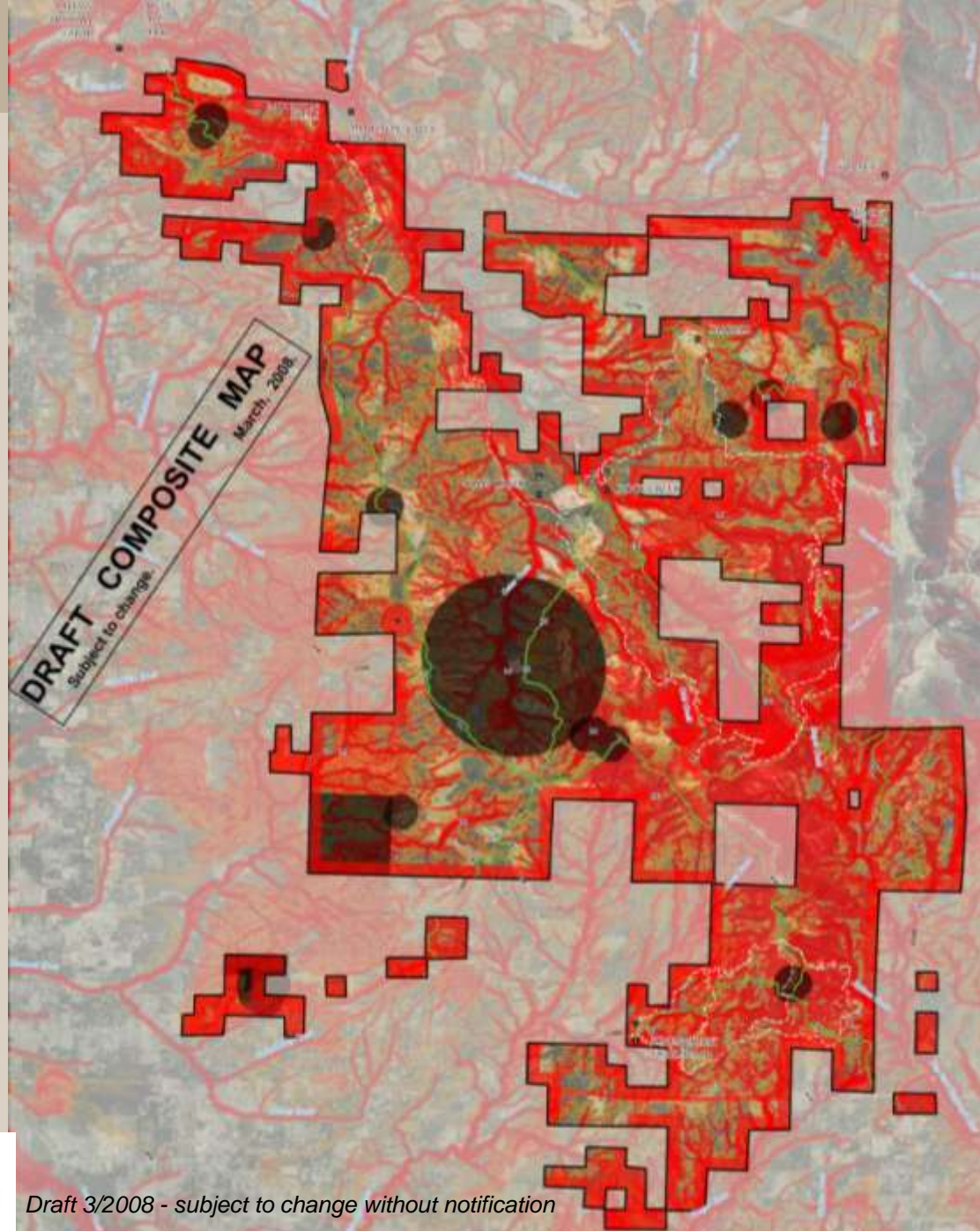
## Recreation Land Suitability

### BIOLOGICAL + SOILS / GEOLOGY + MANAGEMENT

*Long-term Limiting  
Factors*

for

## *Recreation Facilities*



Draft 3/2008 - subject to change without notification









Questions?