

# Western Yacolt Recreation Plan

## Recreation Land Suitability

**5-2010 Draft Information - Subject to Change Without Notification**

*This presentation is for planning purposes only and is not to be edited*

# Recreation Land Suitability

*Identify and map areas with long- term limiting factors that affect recreation planning*

**Biological Criteria**

**Geology & Soil Criteria**

**Management Criteria**

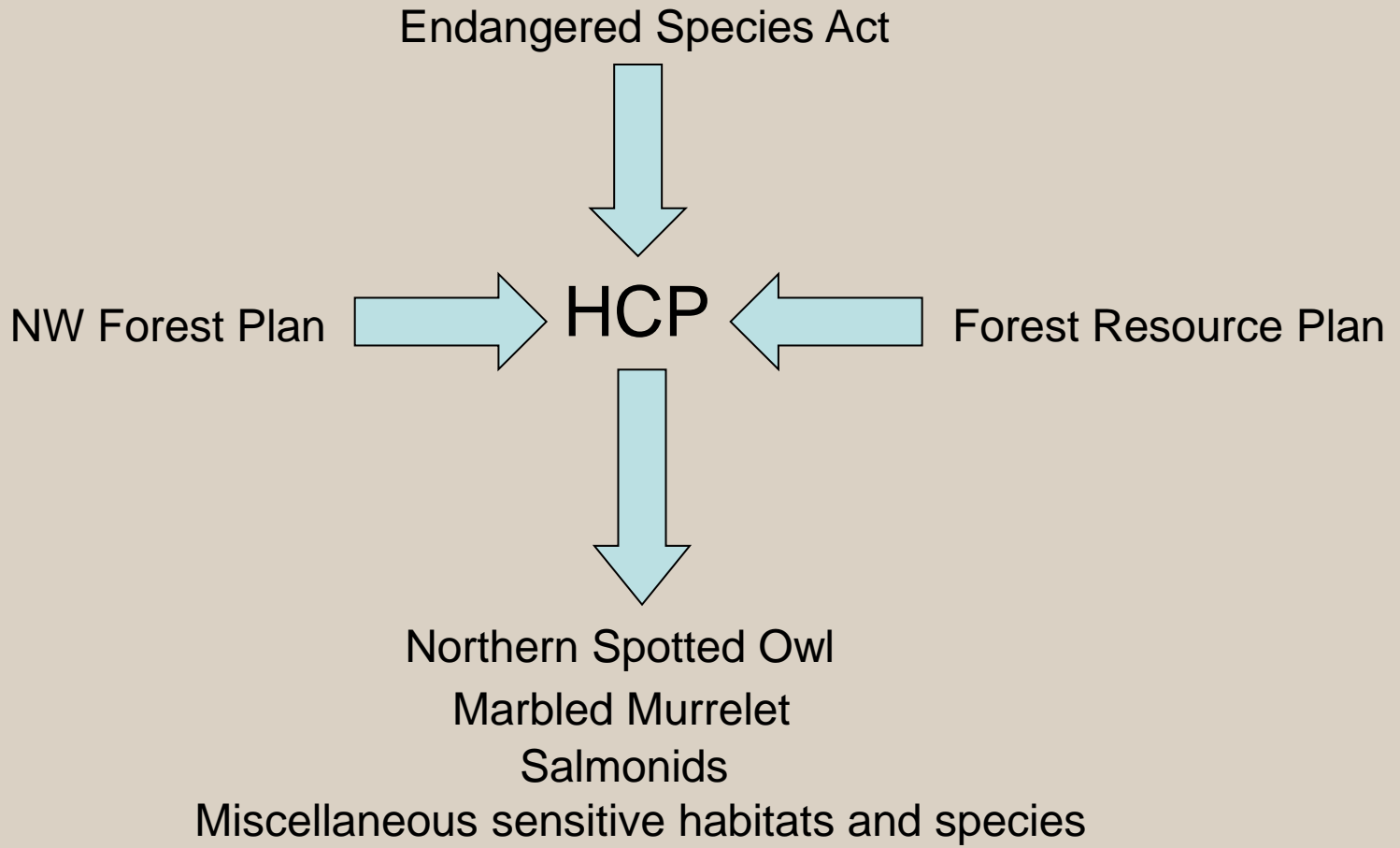
# Overview

- 1) Habitat Conservation Plan**
- 2) Review biological criteria individually**
- 3) Suitability matrix**
- 4) Composites of information by type**

# Habitat Conservation Plan

*Implementation began in 1997*

# Habitat Conservation Plan - 1997



# Terms for Biological Suitability

Low Suitability= Areas with long-term limiting factors. These primarily include Habitat Conservation Plan protected habitats and State priority habitats

Moderate Suitability= Areas where less mitigation and potential for impact exists compared to low suitability

# Biological Criteria\*

*Wetlands*

*Wetland Buffers*

*Salmonids*

*Riparian Areas*

*Deer Winter Habitat*

*Talus, Caves, Cliffs, Balds*

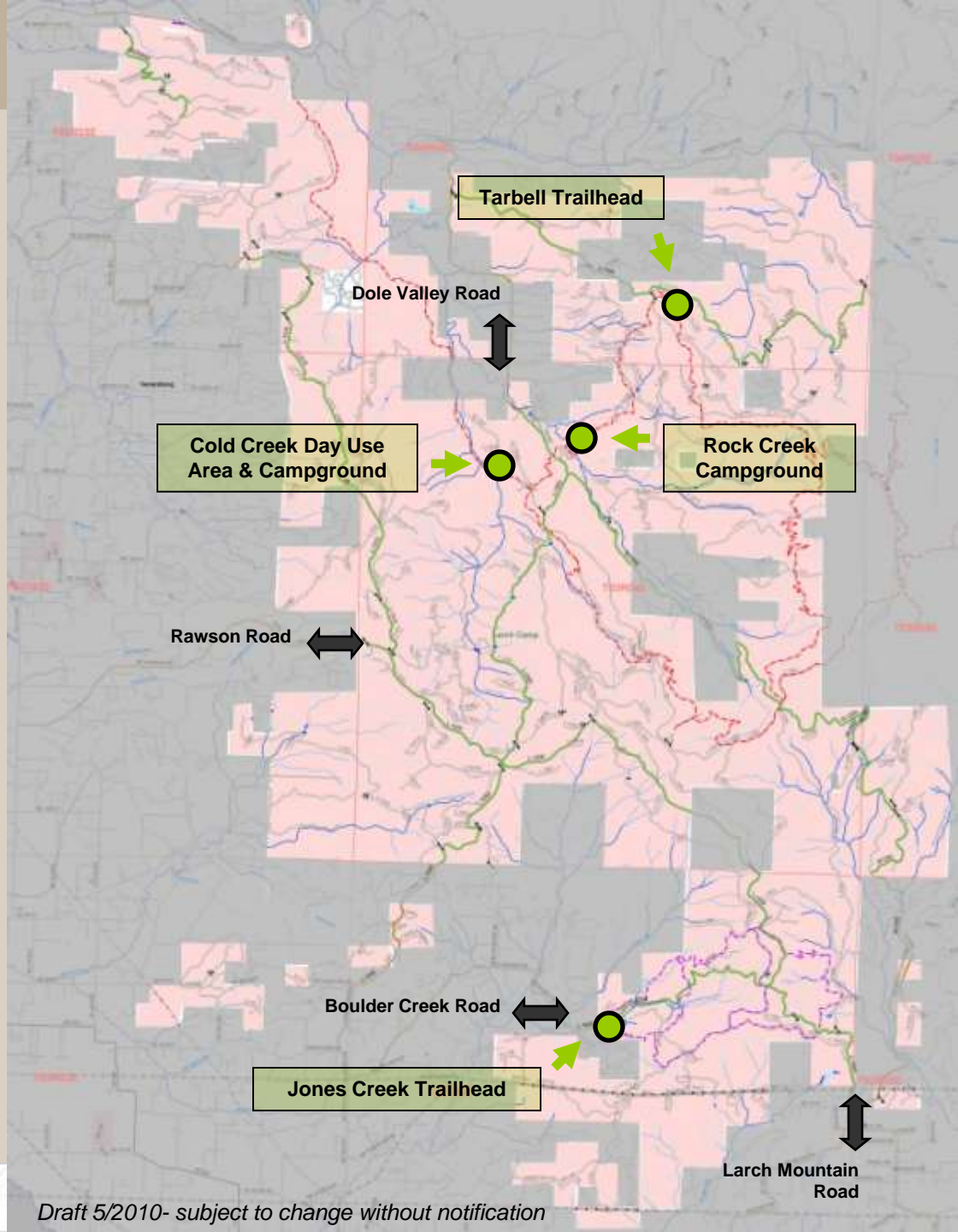
*Sensitive, Threatened & Endangered Species*

*\*These project-scale considerations are not intended to replace site specific project analysis. This list is based on information available to date.*

## Recreation Planning Area

● Existing Recreation Facilities

↔ Main Access Roads





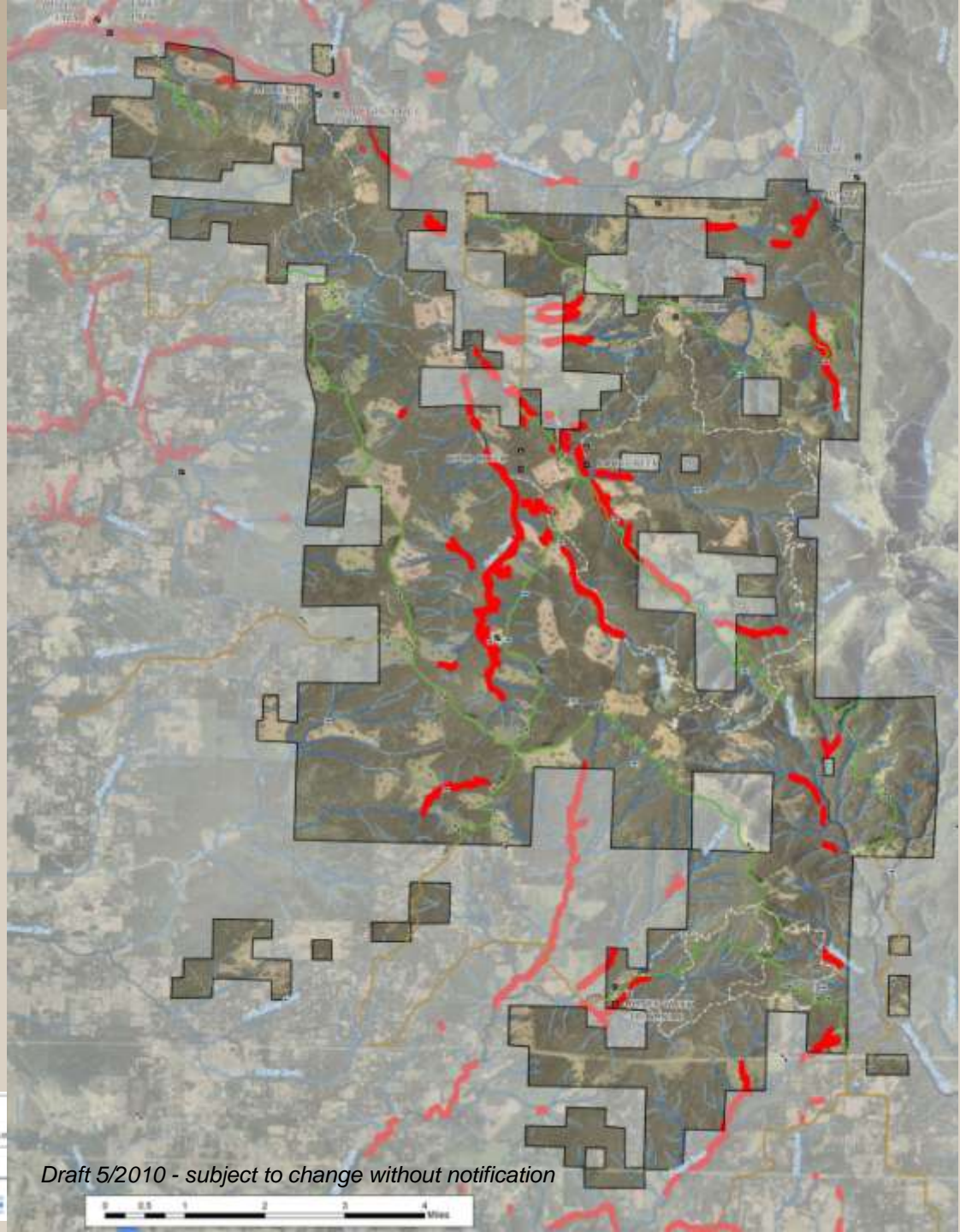
# Western Yacolt Recreation Plan

## Recreation Land Suitability

**BIOLOGICAL**  
*Long-term Limiting Factors / Low & Moderate Suitability*

 **WETLAND BUFFERS**

Source:  
US Fish & Wildlife Service  
National Wetlands Inventory—Dole, Larch  
& Yacolt (buffered)



Draft 5/2010 - subject to change without notification



**DRAFT**

© 2010 USFWS. This map is for informational purposes only. It is not intended to be used as a legal document. The map is subject to change without notice. For more information, please contact the project manager.

	Wetland Buffer
	Low Suitability
	Moderate Suitability

**LEGEND**

**WETLAND BUFFERS**

- Wetland Buffer

**RECREATION LAND SUITABILITY**

- Low Suitability
- Moderate Suitability

**OTHER FEATURES**

- Wetland
- Water
- Road
- Boundary
- City

**Scale**

0 1 2 3 4 Miles





## Recreation Land Suitability

### **BIOLOGICAL** *Long-term Limiting Factors/ Low Suitability*

 Deer

# WINTER HABITAT

Source:  
Ropa Database  
WA Dept. of Fish & Wildlife  
Priority Habitat Species SV



Draft 5/2010 - subject to change without notification

**DRAFT**

**LEGEND**

**GENERAL**

- County Boundary
- City Boundary
- Water
- Highway
- Road
- Trail
- Power Line
- Other

**RECREATION LAND SUITABILITY**

- LOW SUITABILITY
- MODERATE SUITABILITY

**SCALE**

0 0.5 1 2 3 4 Miles

**NATIONAL SYSTEMS**

# Western Yacolt Recreation Plan



## TALUS, CAVES, CLIFFS, BALDS

Source:  
DNR ROPA Database  
PC Region Shared Talus Slopes



Draft 2/2008 - subject to change without notification

**DRAFT**

© 2008 Oregon Department of Natural Resources. All rights reserved. This map is a draft and is subject to change without notice. It is not intended for use as a legal document. For more information, contact the Oregon Department of Natural Resources, 1000 NE Oregon Street, Portland, OR 97232, (503) 725-2000.

SYMBOL	DESCRIPTION
	Recreation Plan Boundary
	Low Sustainability
	Increased Sustainability
	Forest
	Water
	Developed
	Open Space
	Wetlands
	Shoreline
	Highway
	Trail
	Other

**LEGEND**

**SYMBOLS BY SUSTAINABILITY TYPE**

- Talus
- Caves
- Cliffs
- Balds

**SCALE**

0 1 2 3 4 Miles

**Natural Resources**

Criteria also included

**Sensitive, Threatened, Endangered  
SPECIES**



# Western Yacolt Recreation Plan Suitability Matrix

## *Biological Long Term Limiting Factors*

### *Long Term Limiting Factors*

	Low Suitability	Moderate Suitability
<b>BIOLOGICAL CRITERIA</b>		
Wetlands	All Trails & Facilities (requires case by case consideration)	
Wetland Buffers	ORV & Non Motorized Multiple Use Trails, Facilities (requires case by case consideration)	Hiker Only Trails (requires case by case consideration)
Salmonids	All Trails & Facilities	
Riparian Areas	ORV & Non Motorized Multiple Use Trails, Facilities (requires case by case consideration)	Hiker Only Trails (requires case by case consideration)
Deer Winter Habitat	ORV Trails, Facilities (seasonal closures are considerations)	Non Motorized and Hiker only Trails (seasonal closures are considerations)
Talus, Caves, Cliffs, Balds	All Trails & Facilities	
Sensitive, Threatened & Endangered Species (plants and animals)	All Trails & Facilities (confidential data-included in assessment)	

*Draft- 5-2010 Subject to change without notice- This matrix is based on information available to date.*

# Biological Composite Categories

**Hiker Only Trails**

**Non Motorized Trails**

**ORV Trails**

**Recreation Facilities**



# Western Yacolt Recreation Plan

## Recreation Land Suitability

### BIOLOGICAL COMPOSITE

*Long-term Limiting Factors*

*for*  
***Non Motorized Trails***



Draft 5/2010- subject to change without notification

**DRAFT**

Western Yacolt Recreation Plan  
Recreation Land Suitability  
Biological Composite  
Long-term Limiting Factors  
for Non Motorized Trails  
Draft 5/2010

• Campground	• 2000' Buffer Zone	• Good
• Wildlife Corridor	• Riparian Corridor Buffer	• Fair
• Watercourse	• Riparian Corridor	• Poor
• Forest of Interest	• Riparian Corridor	• Poor
• Parking at Trailhead	• Riparian Corridor	• Poor
• Access at Trailhead	• Riparian Corridor	• Poor
• Road Corridor	• Riparian Corridor	• Poor
• Multi-Range Road	• Riparian Corridor	• Poor
• Log Structure	• Riparian Corridor	• Poor

Legend for Biological Composite:  
• Good  
• Fair  
• Poor

Legend for Riparian Corridor:  
• Riparian Corridor Buffer  
• Riparian Corridor

Legend for Other Features:  
• Campground  
• Wildlife Corridor  
• Watercourse  
• Forest of Interest  
• Parking at Trailhead  
• Access at Trailhead  
• Road Corridor  
• Multi-Range Road  
• Log Structure

Scale: 0 0.5 1 2 3 4 Miles





# What is next ?

Geology & Soil Criteria (potential for unstable slopes, erosion potential, etc...)

Management Criteria (cultural resources, easements, adjacent residential and private landowner considerations, road access, etc...)

Questions?