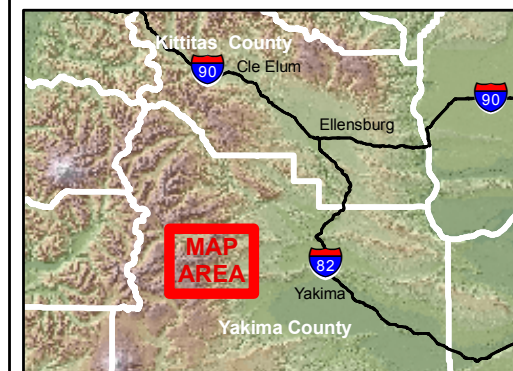


Ahtanum Cooperative Road Management Area

Roads open to public motor vehicle travel are posted with a round green reflector on white route markers as shown. All other roads are closed to all motor vehicles. Violators will be prosecuted. (WAC 232.12.18)

- Department of Natural Resources
- US Forest Service
- Yakama Nation
- Green Dot Road
- Greendot Jeep Trail
- Multiple Use Trail (48" maximum width)
- Gate / Blocked Road
- End of Green Dot Road
- Klickitat Meadows - No Unauthorized Vehicles

There is no guarantee that roads are passable or maintained to any specified standard.



This product is provided "AS IS" without warranty of any kind, either express or implied, including, but not limited to, the implied warranties of merchantability and fitness for a particular use. The Washington Department of Natural Resources will not be liable to the user of this product for any activity involving the product with respect to the following: (a) Lost profits, lost savings or any other consequential damages. (b) The fitness of the product for a particular purpose. (c) Use of the product or results obtained from the use of the product. - June 2009.

Map Updated 7/22/2010

