



Public Auction Sale of Timber

September 2021

Book 1027



IMPORTANT NOTICES

Natural Resources (DNR)

Governmental Regulatory Actions or Orders

The purchaser assumes the risk of liabilities related to regulatory actions or orders by any government agency that may affect the operability of these timber sales. Such regulatory actions or orders include, but are not limited to, actions taken pursuant to the State Forest Practices Act, Chapter 76.09 RCW, and the Federal Endangered Species Act, 16 U.S.C. §§ 1531-1544. Please see timber sale contract clauses G-066 and G-220 for further information.

Threatened and Endangered Species

DNR cannot verify the presence or absence of any threatened or endangered species that may affect the operability of the timber sale. Purchasers must rely on their own assessments.

Export Restricted

All timber purchased under these state DNR contracts shall not be exported outside of the United States until the timber has been processed. Purchasers shall not violate any of the prohibitions in WAC 240-15-015 (relating to the prohibitions on export and substitution), WAC 240-15-025 (relating to reporting requirements), and WAC 240-15-030 (relating to enforcement). If purchasers knowingly violate WAC 240-15-015, purchasers shall be barred from bidding on or purchasing export restricted timber as provided.

Cover photos

Timber Sales in this book are from state trust lands, managed to help build K-12 public schools, state universities, colleges, prisons, mental hospitals, the state Capitol; and to support local services in many counties.

Top right: Landscape view of DNR-managed trust lands in western Washington. Photo courtesy of DNR staff.

Second down right: Timber harvest operations on DNR-managed trust land. Photo courtesy of DNR staff.

Third down right: Log truck loaded with timber harvested from DNR-managed trust land. Photo courtesy of DNR staff.

Bottom right: Marcus Whitman Elementary School in Richland Washington. Photo courtesy of Richland School District.

Bottom middle: Storytime at the Shelton Timberland Library. Photo courtesy of Timberland Regional Library.

Bottom left: Douglas-fir seedlings growing at the Webster Nursery. Many of these seedlings will be planted following timber harvest on DNR-managed trust lands. Photo courtesy of DNR staff.

Table of Contents

Certification Opportunities for DNR Timber Purchasers	Page 3
Bidder/Purchaser Auction and Bidding Information	Page 5
Summary of All Sales Being Offered in August	Page 9
Quality Sorts	Page 11
Blacktip	Page 17
Q West Woody Mtn	Page 23
Q Wild Wood	Page 29
Serenity Now	Page 37
Fontal	Page 43
Slapstick Hardwood	Page 49
Sealed Bid Form and Instructions	Page 53
Statewide Bid Bond and Instructions	Page 55
Timber Sale per Sale Bid Bond and Instructions	Page 59
Log Sort Sealed Bid Form and Instructions	Page 63



Certification Opportunities for DNR Timber Purchasers

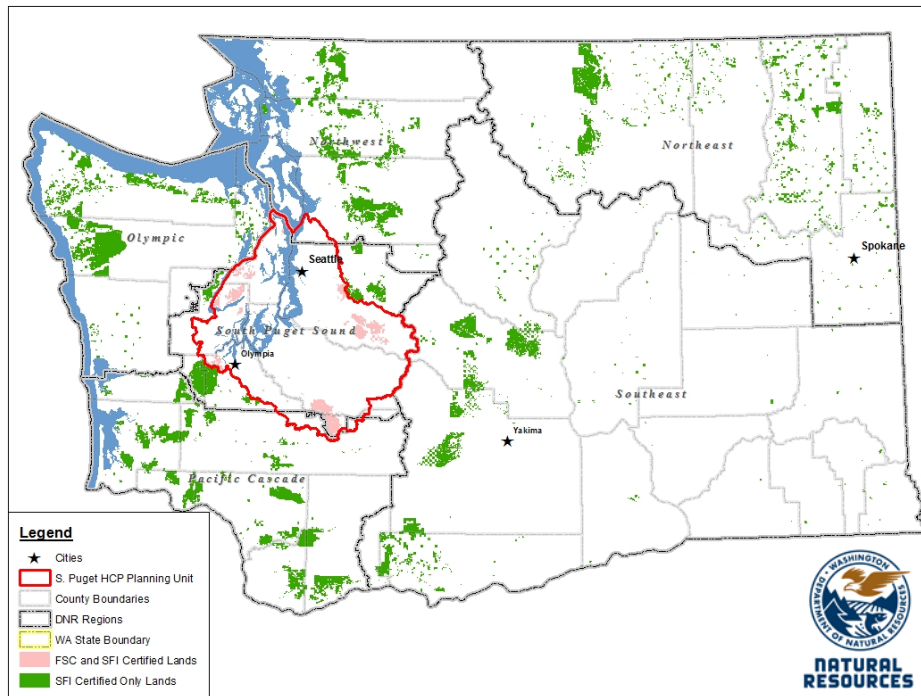
Certified forests are grown to an approved set of standards which demonstrate environmentally responsible, socially beneficial, and economically viable management practices that promote responsible forestry. This unique commitment to responsible forestry recognizes that forest landowners play a critical role in ensuring the long-term health and sustainability of our forests.

Forest Stewardship Council® (FSC®) is an independent, non-profit organization that promotes responsible management of the world's working forests through the development of forest management standards, a voluntary certification system, and trademarks that provide recognition and value to products bearing the FSC label in the marketplace. FSC standards ensure forestry is practiced in an environmentally responsible, socially beneficial, and economically viable way.

Sustainable Forestry Initiative Inc. is an independent, non-profit organization internationally endorsed and accepted around the world. The Sustainable Forestry Initiative® (SFI) program is based on the premise that responsible environmental behavior and sound business decisions can coexist. Its three-chamber Board of Directors governs all aspects of the SFI® program, with equal representation from the environmental, economic, and social sectors.

Currently, all Department of Natural Resources (DNR)-managed forestlands and conservation areas in Washington State are certified under the SFI program Standard. Forestlands within DNR's South Puget Habitat Conservation Plan Planning Unit, located within parts of King, Pierce, Thurston, Lewis, Kitsap, and Mason counties, are dually certified under both the FSC-US Forest Management Standard and the SFI program Standard.

Certification under each standard involves an inspection audit of the landowner's forest management activities by an independent, accredited third-party to verify that it meets specified forest management principles. If the forest unit complies with the specific standard, the landowner receives a certificate of conformance ensuring that responsible forestry is being practiced. Both standards encourage integration of perpetual growing and harvesting of trees with strong measures to protect wildlife, plants, soil, water, and air quality. Both standards provide a seal of approval that forests certified under these principles are well-managed. The global marketplace recognizes and endorses multiple forest certification standards. Each standard has individual market niches. By being dually certified, DNR can maximize its customer base and provide choices to the consumer.



DNR's FSC certificate number is: BV-FM/COC-080501

DNR's SFI certificate number is: PwC-SFIFM-513

DNR-managed forestlands within the South Puget Habitat Conservation Plan Planning Unit (located within parts of King, Pierce, Thurston, Lewis, Kitsap, and Mason counties) are certified as being in compliance with the Forest Stewardship US Forest Management Standard.

To learn more about chain of custody and demonstrating that your timber is derived from a responsibly managed forest and/or to learn more about becoming a participant in the FSC Program, visit <https://us.fsc.org/>.

To learn more about DNR timber sales certified under the FSC Standard, visit www.dnr.wa.gov.

FSC A.C. owns all right, title, and interest in and to the Forest Stewardship Council trademarks.

All DNR-managed forested state trust lands across the state have been certified as being in compliance with the Sustainable Forestry Initiative Forest Management Standard.

To learn more about chain of custody and demonstrating that your timber is derived from a responsibly managed forest and/or to learn more about becoming a participant in the SFI program, visit www.sfiprogram.org.

To learn more about DNR timber sales certified under the SFI program Standard, visit www.dnr.wa.gov.

SFI Marks are registered marks owned by Sustainable Forestry Initiative Inc.

To learn more about certification on DNR-managed forested state trust lands, visit <https://www.dnr.wa.gov/programs-and-services/product-sales-and-leasing/timber-sales/forest-certification> or contact:

Product Sales & Leasing Division, Product Sales Section:

Koshare Eagle, Assistant Division Manager, 360-902-1561, koshare.eagle@dnr.wa.gov
Steve Teitzel, Operations, 360-902-1741, steve.teitzel@dnr.wa.gov

Forest Resources Division, HCP and Scientific Consultation Section:

Allen Estep, Assistant Division Manager, 360-902-2898, allen.estep@dnr.wa.gov
Douglas Kennedy, Forest Certification Program Lead, 360-902-1283, douglas.kennedy@dnr.wa.gov

Washington State Department of Natural Resources (DNR)

Bidder's/Purchaser's Inspection of Sale Area and Forest Products

Acreage estimates and volume estimates contained within each timber notice of sale and each timber sale contract are made only for administrative and identification purposes. Except as expressly provided by the timber sale contract, the purchaser shall be responsible for paying the entire purchase price, even if the actual acreage or timber volume varies from the estimated quantity or volume shown.

All prospective bidders have the opportunity and are expected to inspect the sale area and the forest products located thereon. Bidders shall not rely on any representations by the State including, but not limited to, acreage estimates, volume estimates, appraisal or pre-bid documentation. The successful bidder/purchaser will further warrant that they have entered the timber sale contract without any reliance upon the DNR's volume estimates, acreage estimates, appraisals, pre-bid documentation, or any other representation by the DNR.

Any timber sale contract arising out of these public auctions will require the successful purchaser to warrant that they are entering the timber sale contract based solely upon their own judgment of the value of the forest products, formed after their own examination and inspection of both the timber sale area and the forest products being sold.

Exclusion and Disclaimer of Warranties

The PARTIES AGREE that the IMPLIED WARRANTIES OF MERCHANTABILITY AND FITNESS FOR A PARTICULAR PURPOSE, and ALL OTHER WARRANTIES EXPRESS OR IMPLIED, ARE EXCLUDED from this transaction, and shall not apply to the goods sold. For example, THE FOLLOWING SPECIFIC MATTERS ARE NOT WARRANTED, and are EXCLUDED from this transaction:

- A. ***The merchantability of the forest products.*** The use of the term "merchantable" in any document is not intended to vary the foregoing.
- B. ***The condition of the forest products.*** All forest products will be conveyed "AS IS."
- C. ***The acreage contained within any sale area.*** Any acreage descriptions appearing in the timber notices of sale, timber sale contract, timber sale map or other documents are estimates only, provided solely for administrative and identification purposes.
- D. ***The volume, quality, or grade of the forest products.*** The descriptions of the forest products to be conveyed are estimates only, made solely for administrative and identification purposes.
- E. ***The correctness of any soil or surface conditions, presale construction appraisals, investigations, and all other pre-bid documents prepared by or for the State.*** These documents have been prepared for the State's appraisal purposes only.
- F. ***That the sale area is free from threatened or endangered species, or their habitat.*** The State is not responsible for any interferences with forestry operations that result from the presence of any threatened or endangered species, or the presence of their habitat, within the sale area.
- G. That the forestry operations to be performed under this contract will be free from regulatory actions by governmental agencies. The State is not responsible for actions to enforce regulatory laws, such as the Washington Forest Practices Act (Chapter 76.09 RCW), taken by the Department of Natural Resources or any other agency that may affect the operability of these timber sales.
- H. Items contained in any other documents prepared for or by the State.

Please also see timber sale contract clause G-060 for further information.

BIDDING PROCEDURES FOR TIMBER AUCTIONS

The general requirements that follow are a part of all Timber Notices of Sale to be auctioned by the Department of Natural Resources (DNR).

General Information

The State reserves the right to waive minor irregularities and the right to reject any or all bids.

- A. This book contains the timber notices of sale and maps for each timber sale scheduled to be auctioned. More specific information can be obtained by contacting the appropriate region office at the number listed on the back cover of this book. Sales may be added to each monthly auction by the Department which are not included in this publication. This publication is not updated following original production.
- B. The timber notice of sale is a summary of sale information. For more specific information, interested parties are encouraged to view the Auction Packets on www.dnr.wa.gov. Auction Packets contain **DRAFT** copies of the timber notice of sale, map, contract, road plan, cruise data, precruise and cruise narrative, and other associated documents.
- C. Timber sale auction packets may also be obtained at no charge for individual sales by visiting the appropriate region office.
- D. Timber sale contracts contain extensive terms and conditions that will be binding upon successful high bidders. Each bidder should carefully review all terms contained in the appropriate **DRAFT** timber sale contract prior to bidding on a sale, and should review the final contract prior to signing. **DRAFT** timber sale contracts are contained in the auction packets and are available upon request at the respective region office.
- E. Sales advertised in this book are subject to the Board of Natural Resources approval before they will be sold. The Board meets and approves sales approximately six weeks prior to auction.
- F. The State does not guarantee the accuracy of any information contained herein pertaining to particular sales. Therefore, all prospective purchasers are expected to make their own independent inspections and appraisals prior to bidding.
- G. If any conflict exists between the information in the Timber Notice of Sale, timber sale map, sale auction packets and that in the timber sale contract, the signed contract will prevail.
- H. Purchasers must pay the Forest Excise Tax on the bid price, permanent road construction costs, and other considerations. The tax rate is 5% without the EARR credit and 4.2% with the credit. For more information contact the Department of Revenue, Forest Tax Section at 1-800-548-8829.
- I. **All sales are subject to confirmation by the DNR under RCW 79.15.120.**
- J. **Within 30 days of sale confirmation, the apparent high bidder will provide to the State the Performance Security specified on each Notice of Sale. The successful bidder also agrees to return a signed contract to the State within 30 days of confirmation.** Failure to provide a signed contract to the state within 30 days of confirmation may result in a loss of bidder's rights to the products sold and forfeiture of initial deposit moneys.
- K. Each DNR region office has information about sales offered in that region. For further information, contact the respective DNR region office. Region office addresses and telephone numbers appear on the back cover of this booklet.
- L. The purchaser assumes the responsibility for any costs associated with extra maintenance or repair levied by a county for any county road used by the purchaser.

Auction Time and Location

Auctions will start at 10:00 a.m. and close at 4:00 p.m. on the date and at the location specified in each Timber Notice of Sale.

Bidding Process

- A. All timber will be auctioned using the sealed bid method.
- B. Bids submitted on day of auction must be in the bid box at the specified auction location before 10:00 a.m. The respective DNR region office must receive mailed bids by 4:30 p.m., on the last business day before the auction. Bidders assume all risk for the method of delivery.
- C. The DNR has the right to reject bid forms that are completed incorrectly. *All bid forms must have an original signature on behalf of the person or entity submitting the bid, and must be on the form provided in this booklet or a photocopy thereof. Revised documents are not permissible.* Bidding instructions are on the back of the Sealed Bid Form. A bid deposit must be included in the sealed bid envelope unless using a Timber Sale Statewide Bid Bond.
- D. All bids must include the completed Sealed Bid Form and bid deposit.
- E. Bids will be opened in each respective region in the order in which sales appear in the Public Auction Sale of Timber book (alphabetically by county and by agreement number). Sales added after the book is printed will be inserted to retain this order. Sort sales may be auctioned out of this sequence at the State's convenience.
- F. If a tie bid occurs, the names of the tie bidders will be placed in a hat and the successful bidder will be determined by a drawing.
- G. Opportunities to Withdraw Bids:
For all sales offered on a stumpage basis only, the apparent high bidder on a particular sale will have the option of withdrawing additional sealed bids submitted for any remaining sales to be auctioned. The apparent high bidder must exercise this option within two minutes after the apparent high bidder is announced. This option is not available for sales offered on a delivered basis.

Eligibility to Bid

The following criteria must be met in order to bid on State timber sales:

- 18 years of age (or have a co-signer who meets the eligibility requirements)
- Licensed to do business in the State of Washington
- Eligible to bid on Export Restricted timber
- Authorized to submit bids

Authorized Representatives

Company officers or company authorized representatives may bid on State sales, sign State documents, or sign checks. A list of authorized representatives and their specific authorities must be submitted, in writing, to the Department of Natural Resources, Product Sales and Leasing Division, P.O. Box 47014, Olympia, Washington, 98504-7014, ten days in advance of the auction. *A company owner or officer must sign this submittal.*

Bid Deposits

- A. Required bid deposits are listed on each Timber Notice of Sale.
- B. Bid deposits must be in the form of cash, certified check, cashiers' check, money order or bid bond.
- C. Bid bonds may be either a Timber Sale Per Sale Bid Bond or a Timber Sale Statewide Bid Bond.
- D. All bid deposits shall be submitted by the person or entity submitting the bid and made payable to the Department of Natural Resources. **Third party deposits will not be accepted.**

Timber Sale Per Sale Bid Bonds

- A. The Per Sale Bid Bond shall guarantee payment of the bid deposit **within ten days of auction.**
- B. The balance between the bid bond and the Initial Deposit payment is due **by 4:30 p.m., on the day of auction.**
- C. Additional forms and instructions for a Per Sale Bid Bond are available at any DNR region office.

Timber Sale Statewide Bid Bond

- A. Statewide Bid Bonds shall guarantee payment of the Initial Deposit on any statewide timber sale while the bond is in effect.
- B. The Statewide Bid Bond must be received by the Department of Natural Resources, Product Sales and Leasing Division, P.O. Box 47014, Olympia, Washington, 98504-7014, ten days in advance of the auction date. The bond shall be in the amount of \$150,000.00.
- C. Successful bidders using a Statewide Bid Bond must pay the total Initial Deposit payment (10% of the total bid price) **by 4:30 p.m., on the day of the auction.**
- D. A Statewide Bid Bond cannot be used to secure the Initial Deposit payment due the day of auction.
- E. Additional forms and instructions for a statewide bid bond are available at any DNR region office.

Payments

The initial deposit for a sale is 10% of the total bid value as submitted by the apparent high bidder (25% if the bidder is a defaulter as defined under WAC 332-140-300) and never less than \$5,000.00 for lump sum sales. For Lump Sum sales appraised at less than \$5,000.00, the entire bid value is due on day of auction.

- A. Apparent high bidders using cash, certified check, cashiers' check or money order as a bid deposit must pay the total Initial Deposit amount by 4:30 p.m. on auction day.
- B. Apparent high bidders using a Timber Sale Per Sale Bid Bond as a bid deposit must pay the difference between the bid deposit and the total initial deposit by 4:30 p.m., on the day of auction. The bid bond amount must be replaced with a certified check, cashiers' check, bank draft, cash, money order, or wire transfer within ten days of the auction.
- C. Apparent high bidders using a Timber Sale Statewide Bid Bond must pay the entire Initial Deposit amount by 4:30 p.m. on the day of auction.
- D. All payments must be in the form of a certified check, cashiers' check, bank draft, cash, money order or wire transfer.



Summary Report of All Sales for the Month of September 2021

Board Sales

<u>County</u>	<u>Region</u>	<u>Agree #</u>	<u>FSC® Sale Name</u>	<u>Volume</u>	<u>Value</u>
Grays Harbor	Pacific Cascade	101627	QUALITY SORTS	3,987	\$2,575,731.00
Klickitat	Southeast	87778	BLACKTIP	3,996	\$1,252,000.00
Okanogan	Northeast	101631	Q WEST WOODY MTN	5,672	\$1,038,000.00
Pend Oreille	Northeast	101632	Q WILD WOOD	4,312	\$1,799,000.00
Skamania Clark	Pacific Cascade	100467	SERENITY NOW	6,654	\$1,873,000.00
Snohomish	Northwest	100354	FONTAL	2,644	\$1,075,000.00
Total				23,278	\$9,612,731.00

Region Sales

<u>County</u>	<u>Region</u>	<u>Agree #</u>	<u>FSC Sale Name</u>	<u>Volume</u>	<u>Value</u>
Snohomish Skagit	Northwest	100487	SLAPSTICK HARDWOOD	656	\$41,000.00
Total				656	\$41,000.00



Scan with your smartphone or tablet to go to the September 2021 timber auction page



TIMBER NOTICE OF SALE

SALE NAME: *QUALITY SORTS*

AGREEMENT NO: 30-101636-30-101645

AUCTION: September 30, 2021 starting at 10:00 a.m.
Pacific Cascade Region Office, Castle Rock, WA

COUNTY: Grays Harbor

SALE LOCATION: Sale located approximately 5 miles south of Porter, Wa

PRODUCTS SOLD

AND SALE AREA: All delivered logs, except leave trees marked with blue paint, leave trees bound by yellow "Leave Tree Area" tags and all down timber existing 5 years prior to the day of sale, bounded by the following;

White "Timber Sale Boundary" tags with pink "Timber Harvest Boundary" flagging and blue "Special Management Area" tags with pink flagging in Unit 1 and 2;

All trees described in Schedule A Trees bounded by white "Timber Sale Boundary" tags with pink "Timber Harvest Boundary" flagging and blue "Special Management Area" tags with pink flagging in Unit 3;

All timber described in Schedule A bounded by white "Timber Sale Boundary" tags with pink "Timber Harvest Boundary" flagging and blue "Special Management Area" tags with pink flagging in Unit 4 and 5;

Orange "Right of Way Boundary" tags and pink "Timber Harvest Boundary" flagging in Unit 6 meeting the specifications described below; on parts of Sections 6, and 7 all in Township 16 North, Range 5 West W.M., containing 84 acres, more or less.

MINIMUM BID AND ESTIMATED LOG VOLUMES:

Agreement #	Sort #	Species and Sort Specifications	Average Log Length	Estimated Volume		Tons Per MBF	Minimum Bid Delivered Prices		Total Appraised Value	Bid Deposit
				Mbf	Tons		\$/mbf	\$/Ton		
101636	1	DF 5-11"	28'	1081	7675	7.1	\$600.00		\$648,600.00	\$64,860.00
101637	2	DF 12-19"	28'	725	4205	5.8	\$650.00		\$471,250.00	\$47,125.00
101638	3	DF 20"+	28'	300	1530	5.1	\$625.00		\$187,500.00	\$18,750.00
101639	4	DF HQ 12"+	28'	1429	8288	5.8	\$720.00		\$1,028,880.00	\$102,888.00
101640	5	WW 5-11"	28'	41	307	7.5	\$525.00		\$21,525.00	\$2,152.50
101641	6	WW 12"+	28'	28	156	5.6	\$550.00		\$15,400.00	\$1,540.00
101642	7A	RA 8"+	28'	279	1953	7	\$600.00		\$168,100.00	\$16,810.00
	7B	MA 8"+	24'	2	14	7	\$350.00 FIXED			
101643	8	DF Pulp 2"+	N/A	22	286	13		\$26.00	\$7,436.00	\$743.60
101644	9	WW Pulp 2"+	N/A	3	39	13		\$26.00	\$1,014.00	\$101.40
101645	10	Hardwood Pulp 2"+	N/A	77	1001	13		\$26.00	\$26,026.00	\$2,602.60
Totals:				3987	25454				\$2,575,731.00	

CERTIFICATION: This sale is certified under the Sustainable Forestry Initiative® program Standard (cert no: PwC-SFIFM-513)

BID METHOD: Sealed Bids

UNIT OF MEASURE: MBF Scale/Tonnage Scale



TIMBER NOTICE OF SALE

EXPIRATION DATE: April 30, 2022

ALLOCATION: Export Restricted

PAYMENT

SECURITY: To be determined by the State as described in Clause P-045.2 of the Purchaser's Contract.

BIDDING

PROCEDURES:

A separate sealed bid and envelope must be submitted for each log sort. Prospective Purchasers may bid on any or all log sorts. On the day of sale the Purchaser must bring their bid deposit up to 10% of their total bid price. Complete bidding procedures and auction information may be obtained from the Pacific Cascade Region Office in Castle Rock WA. Phone number (360)577-2025.

TIMBER EXCISE

TAX:

Purchaser must pay the forest excise taxes associated with the log sorts delivered to them. The tax rate for this sale is 4.2 %. Taxable Stumpage = Total Delivered Value – (Harvest Cost + Estimated Haul Cost + ARRF). For more information contact the Department of Revenue, Forest Tax Section at 1-800-548-8829.

Use the following rates for estimating taxable stumpage:

Harvest Cost = \$140.69 per MBF for sorts 1, 2, 3, 4, 5, 6 and 7 and \$12.00 per Ton for sorts 8, 9 and 10.

Hauling Services Payment Rate per Ton
= (Base Rate + Mileage Rate) x (1.40)

Base Rate = \$2.35 per ton

Mileage Rate = ((\$0.16 x C miles) + (\$0.11 x A miles)) x Fuel Index Factor

ARRF = \$0.00 per MBF for sorts 8, 9 and 10 and \$26.00 per MBF for sorts 1, 2, 3, 4, 5, 6 and 7.

Note: To calculate ARRF rates per ton use the tons\mbf conversion factor in the table above.

Long-haul surcharge: An additional haul payment of \$25/mbf net scale for mbf scale sorts or \$4.60/ton for tonnage sorts will be added for delivery destinations in excess of 250 total one-way miles (A miles plus C miles).

CONFIRMATION:

Each sort is subject to confirmation following auction. Sorts will not be confirmed until at least 10 days after auction. Final contract award is contingent upon the State's haul cost analysis. Actual haul route may vary and is subject to change at the State's discretion.

SPECIAL REMARKS:

The successful Purchaser(s) will be required to purchase logs from the sale area upon delivery to their location specified in the bid submitted. Logs will be delivered to the Purchaser's delivery location by the State's contract harvester. Purchaser is responsible for weighing and scaling costs. All tonnage loads will be weighed and all mbf loads will be scaled at State approved locations. The State reserves the right to determine where logs are authorized to be scaled and weighed.



TIMBER NOTICE OF SALE

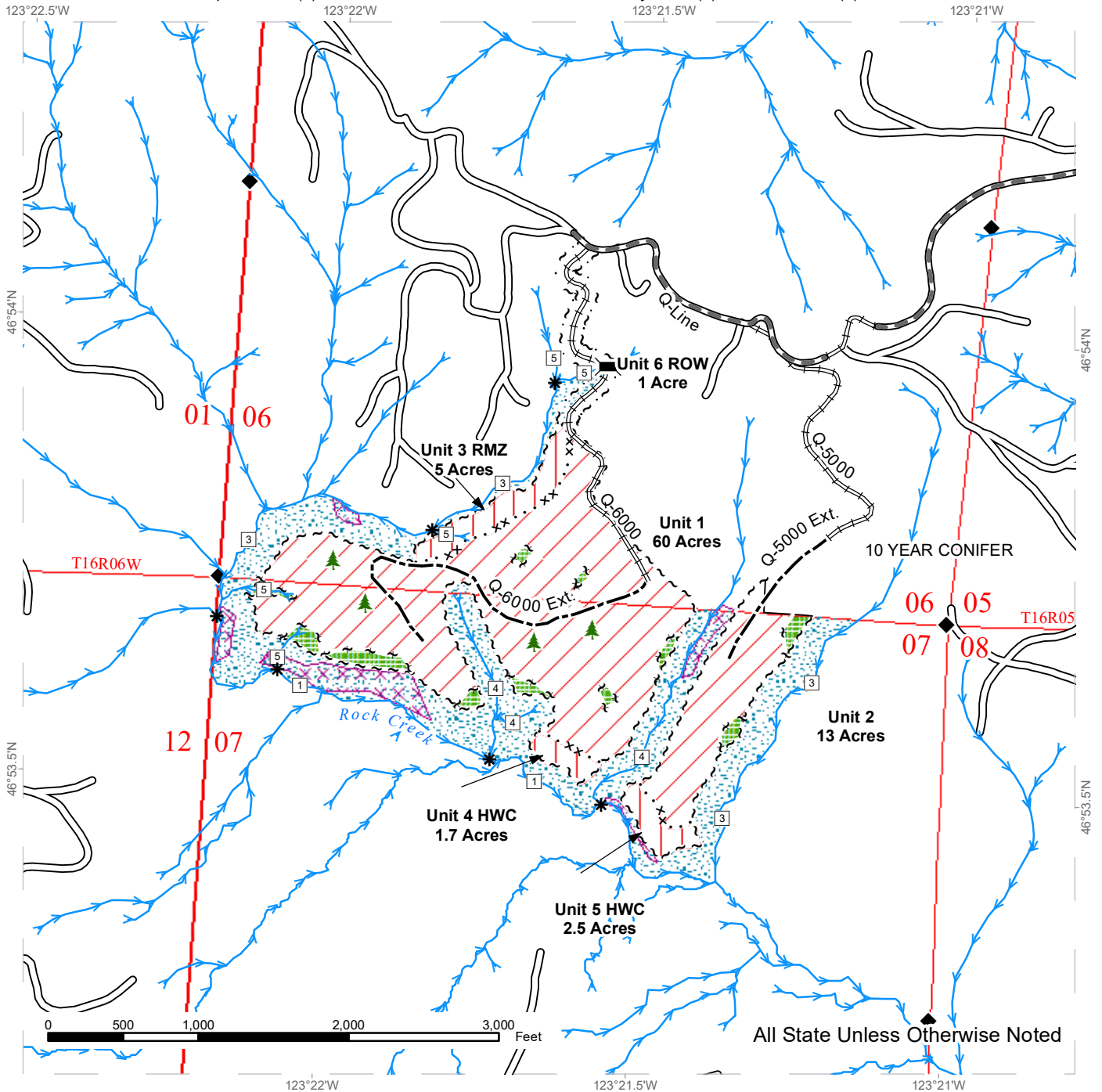
All road work must be completed by August 31, 2021. See road plan for details.

For more information regarding this log sort sale visit our web site:
<http://www.dnr.wa.gov/programs-and-services/product-sales-and-leasing/timber-sales/timber-auction-packets>. If you have questions call Josh Watten at the Pacific Cascade Region Office at (360)577-2025 or Steve Teitzel at the Product Sales and Leasing Division Office in Olympia at (360)902-1741.

TIMBER SALE MAP

SALE NAME: QUALITY SORTS
AGREEMENT #: 30-101627
TOWNSHIP(S): T16R5W
TRUST(S): Capitol Grant (7), Charitable/Educational/Penal & Reformatory Instit. (6), Normal School (8)

REGION: Pacific Cascade Region
COUNTY(S): Grays Harbor
ELEVATION RGE: 320-600



All State Unless Otherwise Noted

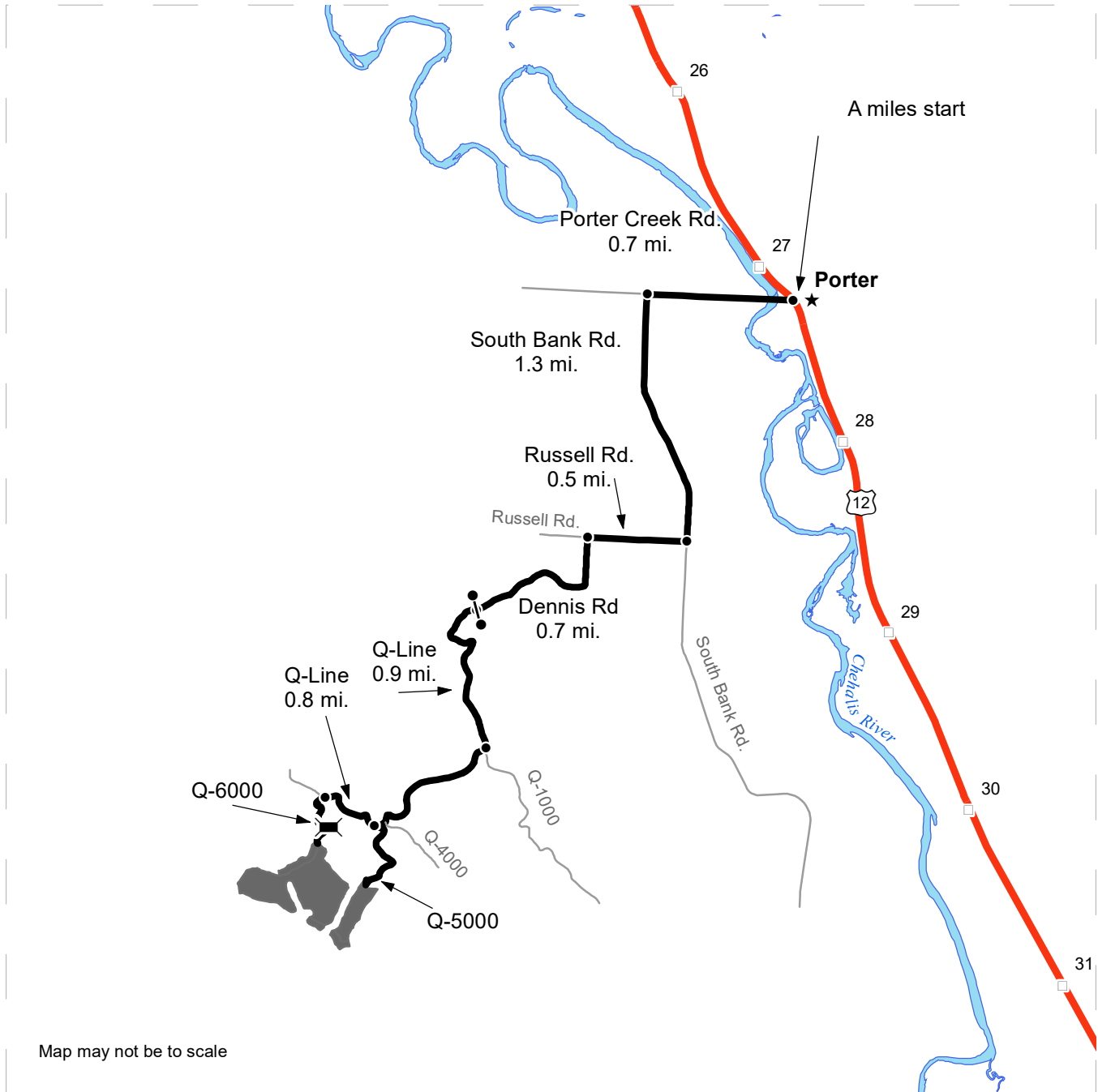
Sale Area	Sale Boundary Tags	Existing Roads	Streams
Riparian Restoration	Special Mgmt Area	Required Pre-Haul Maintenance	Stream Type
Leave Tree Area	Leave Tree Tags	Required Reconstruction	Stream Type Break
Riparian Mgt Zone	Right of Way Tags	Optional Construction	Survey Monument
Potentially Unstable Slopes	Timber Type Change		Bridge
			Leave Tree Area <1/4-acre



DRIVING MAP

SALE NAME: QUALITY SORTS
AGREEMENT#: 30-101627
TOWNSHIP(S): T16R5W
TRUST(S): Capitol Grant (7), Charitable/Educational/Penal & Reformatory Instit. (6), Normal School (8)

REGION: Pacific Cascade Region
COUNTY(S): Grays Harbor
ELEVATION RGE: 320-600



Map may not be to scale

- Timber Sale Unit
- Haul Route
- Other Route
- Highway
- Milepost Markers
- Bridge
- Distance Indicator
- Gate (PCP1-1)

DRIVING DIRECTIONS:

From US Highway 12 (Porter) turn west on to Porter Creek Road and follow for 0.7 miles. Turn left on to South Bank Road and follow for 1.3 miles. Turn right on to Russell Road and follow for 0.5 miles to Dennis Road. Turn left on to Dennis Road and follow for 0.7 miles to the Q-Line gate. Continue on the Q-Line through the gate for 1.7 miles to the Q-5000. At the intersection continue on foot on the Q-5000 to Unit 2 and 5. To access Units 1, 3 and 4 continue in the Q-Line for 0.8 miles to the Q-6000. Continue down the Q-6000 on foot to the units.





TIMBER NOTICE OF SALE

SALE NAME: BLACKTIP

AGREEMENT NO: 30-87778

AUCTION: September 30, 2021 starting at 10:00 a.m., COUNTY: Klickitat
Pacific Cascade Region Office, Castle Rock, WA

SALE LOCATION: Sale located approximately 5 miles northwest of Trout Lake, Washington

PRODUCTS SOLD AND SALE AREA: All timber as described in the Schedule A Cutting Prescription within all five units bounded by timber sale tags and pink flagging

All forest products above located on part(s) of Sections 7, 8 and 18 all in Township 6 North, Range 10 East, W.M., containing 207 acres, more or less.

CERTIFICATION: This sale is certified under the Sustainable Forestry Initiative® program Standard (cert no: PwC-SFIFM-513)

ESTIMATED SALE VOLUMES AND QUALITY:

Table with columns: Species, Avg DBH, Ring Count, Total MBF, Total \$/MBF, and MBF by Grade (3P, SM, 1S, 2S, 3S, 4S, UT). Rows include Grand fir, Douglas fir, Red cedar, and Sale Total.

MINIMUM BID: \$259/MBF (est. value \$1,252,000.00) BID METHOD: Sealed Bids

PERFORMANCE SECURITY: \$100,000.00 SALE TYPE: MBF Scale

EXPIRATION DATE: December 30, 2023 ALLOCATION: Export Restricted

BIDDABLE SPECIES: Grand fir

BID DEPOSIT: \$125,200.00 or Bid Bond. Said deposit shall constitute an opening bid at the appraised price.

HARVEST METHOD: Falling and Yarding will not be permitted from November 1 to April 30 unless authorized in writing by the Contract Administrator.

ROADS: 2.00 stations of required construction. 33.50 stations of required prehaul maintenance. Road construction will not be permitted from November 1 to April 30 unless authorized in writing by the Contract Administrator.

ACREAGE DETERMINATION

CRUISE METHOD: All units traversed with a Trimble gps unit and cruised with variable plots at 1 plot/acre. There is a 1 acre leave tree area tagged out of Unit 4 with yellow LTA tags.



TIMBER NOTICE OF SALE

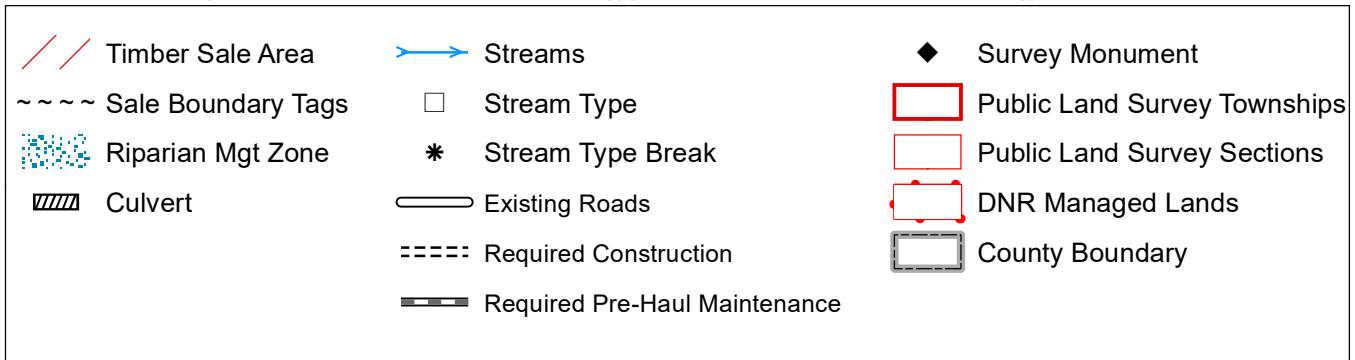
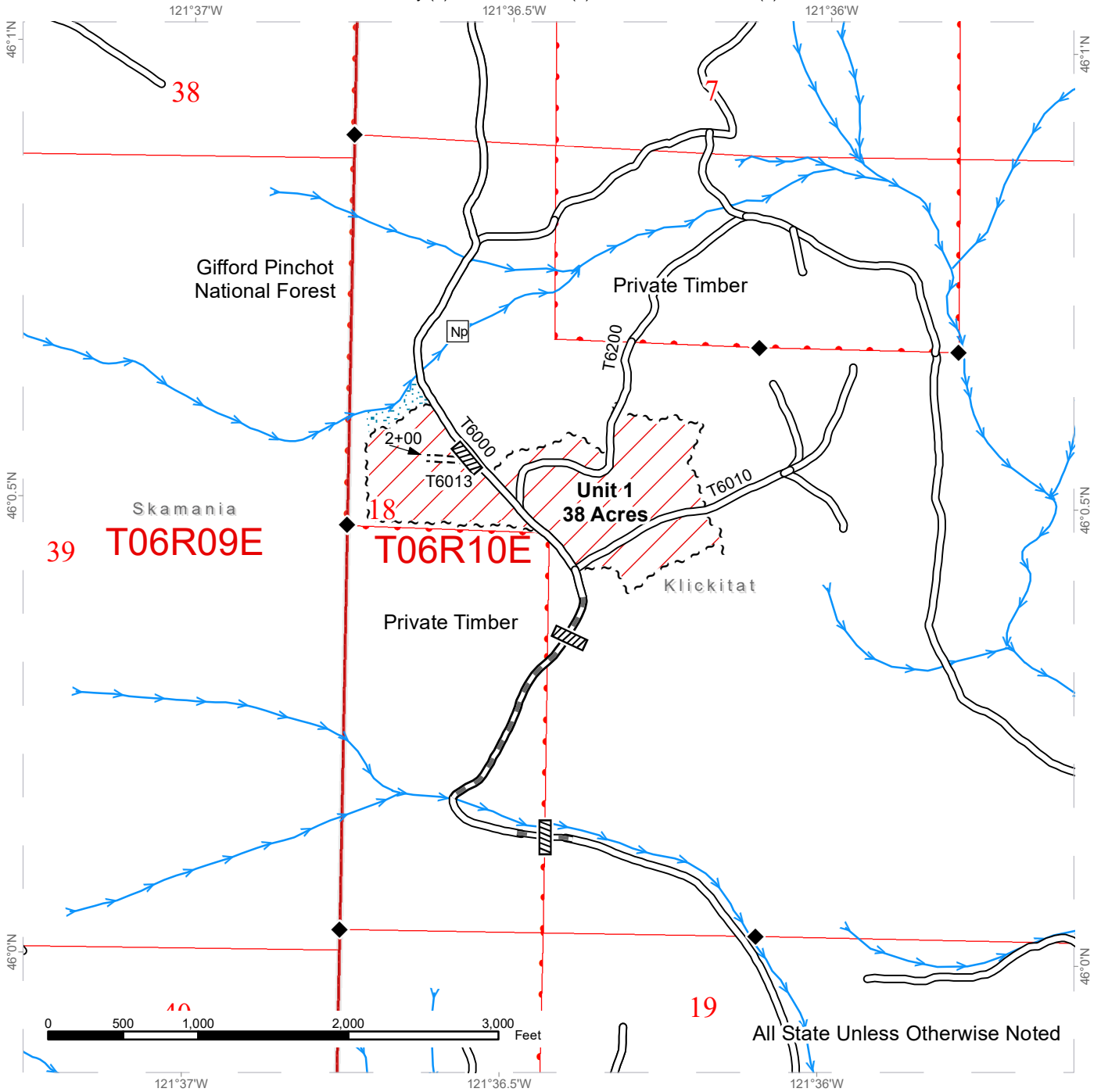
FEES: \$67,900.00 is due on day of sale. \$9.00 per MBF is due upon removal. These are in addition to the bid price.

SPECIAL REMARKS: None.

TIMBER SALE MAP

SALE NAME: BLACKTIP
AGREEMENT #: 30-087778
TOWNSHIP(S): T6R10E
TRUST(S): Common School and Indemnity (3), Normal School (8), State Forest Transfer (1)

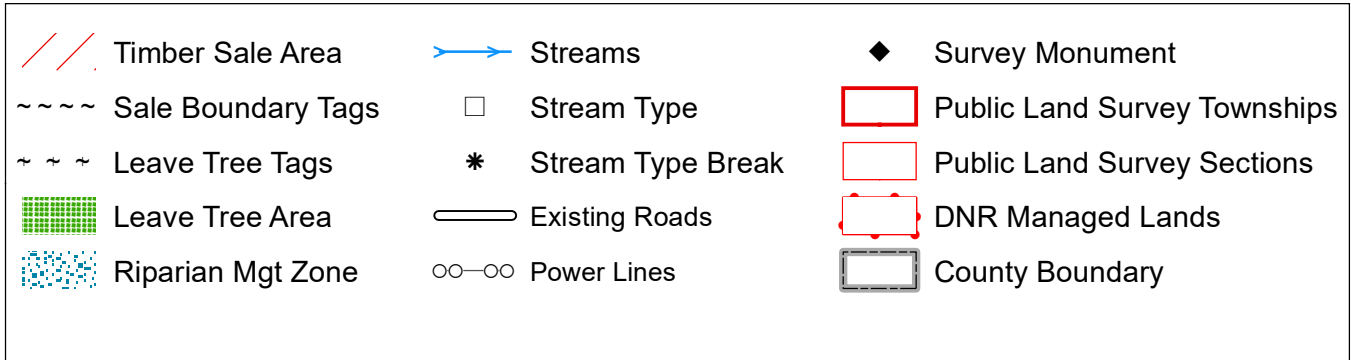
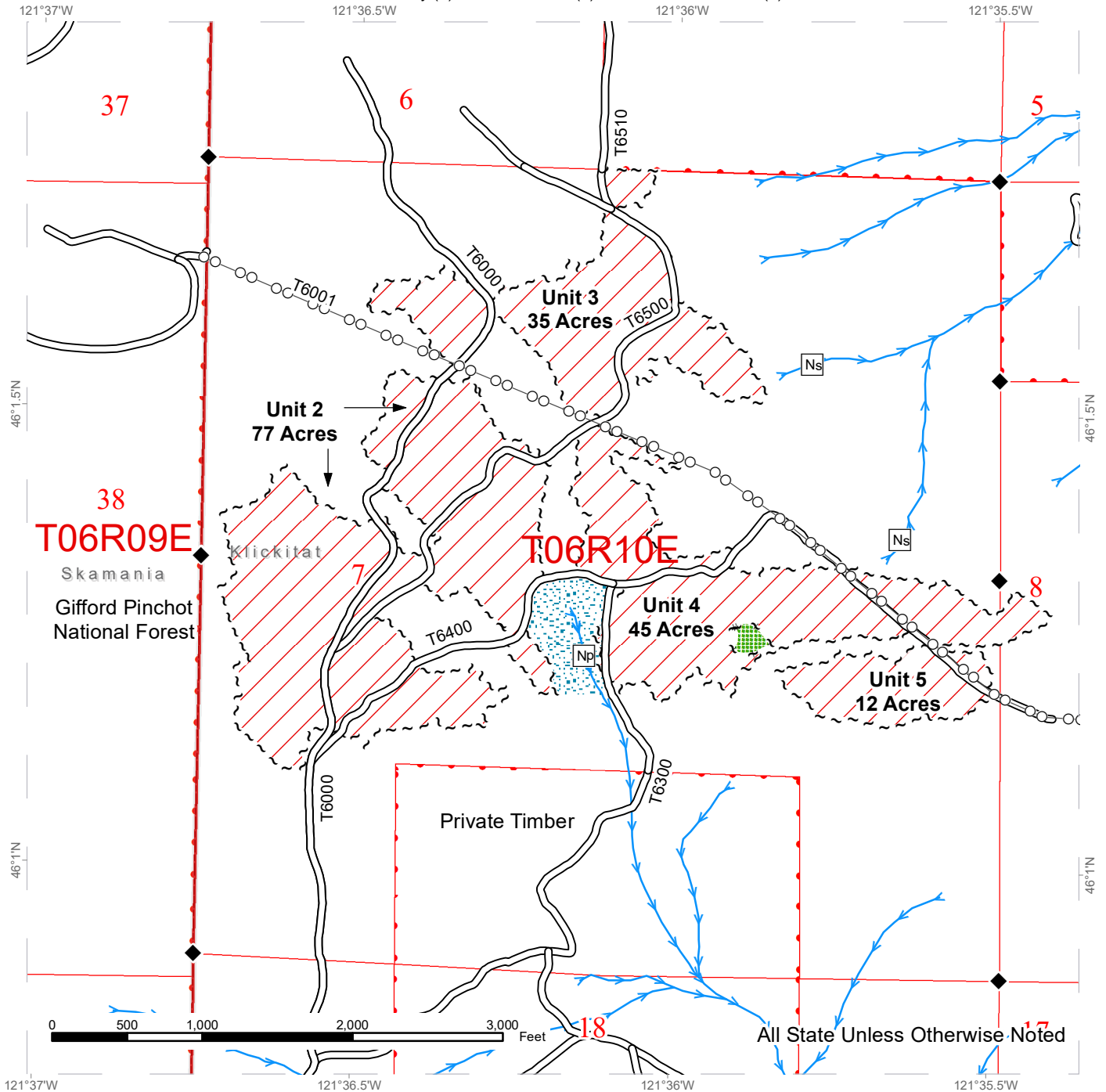
REGION: Southeast Region
COUNTY(S): Klickitat
ELEVATION RGE: 3160'-3920'



TIMBER SALE MAP

SALE NAME: BLACKTIP
AGREEMENT #: 30-087778
TOWNSHIP(S): T6R10E
TRUST(S): Common School and Indemnity (3), Normal School (8), State Forest Transfer (1)

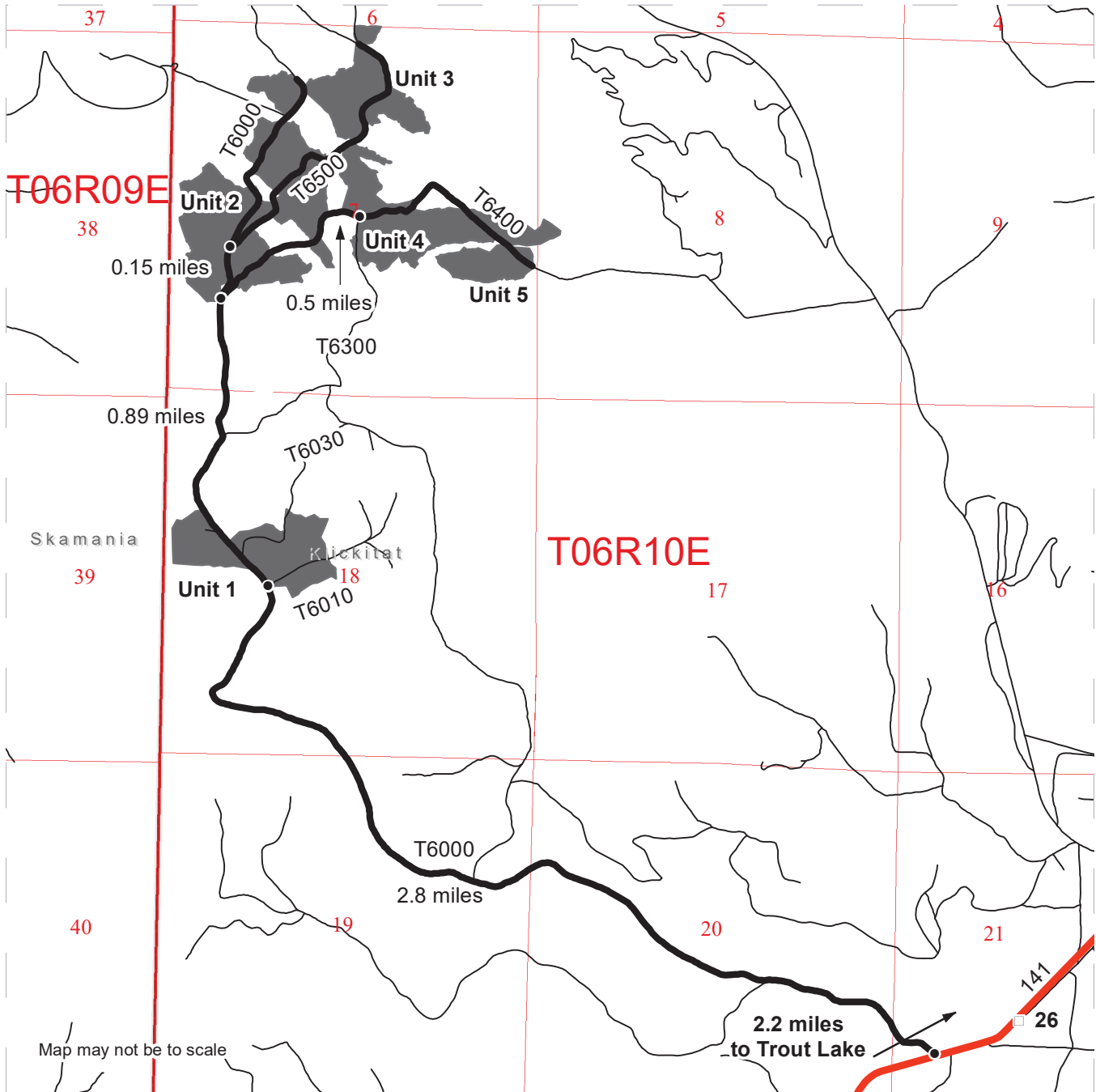
REGION: Southeast Region
COUNTY(S): Klickitat
ELEVATION RGE: 3160'-3920'



DRIVING MAP

SALE NAME: BLACKTIP
 AGREEMENT#: 30-087778
 TOWNSHIP(S): T6R10E
 TRUST(S): Common School and Indemnity (3), Normal School (8), State Forest Transfer (1)

REGION: Southeast Region
 COUNTY(S): Klickitat
 ELEVATION RGE: 3160' - 3920'



- Timber Sale Unit
- Haul Route
- Distance Indicator
- Milepost Markers

DRIVING DIRECTIONS:

Unit 1: Drive north from Troutlake on Highway 141 for 2.2 miles. Turn right on the T6000 and follow for 2.8 miles.

Unit 2: Continue on the T6000 for 0.89 miles.

Unit 3: Continue on T6000 for 0.15 miles, turn right onto the T6500.

Unit 4: From Unit 2, turn right onto the T6400 and continue for 0.5 miles.

Unit 5: From Unit 4, continue East on the T6400.





TIMBER NOTICE OF SALE

SALE NAME: Q WEST WOODY MTN

AGREEMENT NO: 30-101631

AUCTION: September 28, 2021 starting at 10:00 a.m.,
Northeast Region Office, Colville, WA **COUNTY:** Okanogan

SALE LOCATION: Sale located approximately 12 miles west of Okanogan, WA.

PRODUCTS SOLD AND SALE AREA: All green conifer species except for leave trees banded with blue paint. All standing snags (excluding ponderosa pine) except for two standing snags per acre in Units 1, 2, 3, 4, 5, 6, and 7 bounded by white timber sale boundary tags

All forest products above located on part(s) of Sections 7, 8, 9, 16 and 17 all in Township 33 North, Range 24 East, W.M., containing 517 acres, more or less.

CERTIFICATION: This sale is certified under the Sustainable Forestry Initiative® program Standard (cert no: PwC-SFIFM-513)

ESTIMATED SALE VOLUMES AND QUALITY:

Species	Avg Ring DBH	Ring Count	Total MBF	MBF by Grade									
				P	SM	1S	2S	3S	4S	5S	6S	UT	
Douglas fir	14.9		4,246				1,408	2,371	467				
Larch	12.6		735				137	463	135				
Ponderosa pine	14.3		522						128	394			
Lodgepole	11.3		169					118	51				
Sale Total			5,672										

MINIMUM BID: \$1,038,000.00 **BID METHOD:** Sealed Bids

PERFORMANCE SECURITY: \$100,000.00 **SALE TYPE:** Lump Sum

EXPIRATION DATE: October 31, 2023 **ALLOCATION:** Export Restricted

BID DEPOSIT: \$103,800.00 or Bid Bond. Said deposit shall constitute an opening bid at the appraised price.

HARVEST METHOD: Dozer, Rubber tired skidder, and Ground based equipment. Falling and Yarding will not be permitted from March 1 to May 1 unless authorized in writing by the Contract Administrator due to spring break up.

ROADS: 19.58 stations of required construction. 1.16 stations of required reconstruction. 399.60 stations of required prehaul maintenance. 38.78 stations of abandonment. 9.45 stations of decommissioning. 119.06 stations of required post haul maintenance. Road construction will not be permitted from November 15 to May 1 unless authorized in writing by the Contract Administrator due to frozen conditions and spring break up. The hauling of forest products will not be permitted from March 1 to May 1 unless authorized in writing by the Contract Administrator due to spring break up.

ACREAGE DETERMINATION



TIMBER NOTICE OF SALE

CRUISE METHOD: Acreage determined using GPS methods. Acreage shown above is net harvest acres in harvest units. Ponderosa pine: 8.0 - 17.5 inches dbh has a minimum top of 5.6 inch dib. All other species: 7.0 - 17.5 inches dbh has minimum top of 4.6 inch dib. All species 17.6 inches and greater dbh have a minimum top dib of 40% of dob at 16 feet or a 6 inch top whichever is greater.

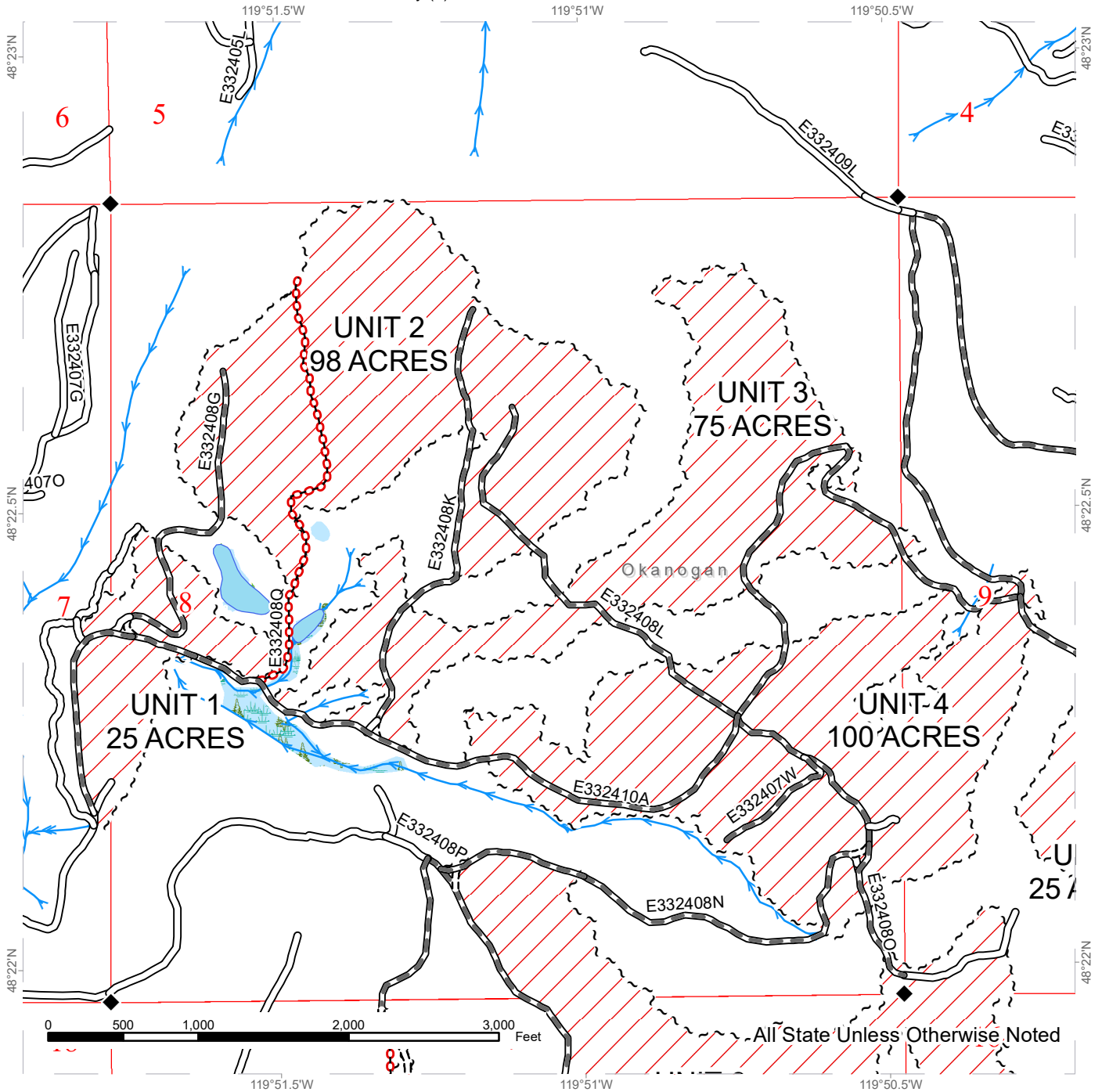
FEES: \$96,424.00 is due on day of sale. \$9.00 per MBF is due upon removal. These are in addition to the bid price.

SPECIAL REMARKS: None

TIMBER SALE MAP

SALE NAME: Q WEST WOODY MT
AGREEMENT #: 30-101631
TOWNSHIP(S): T33R24E
TRUST(S): Common School and Indemnity (3)

REGION: Northeast Region
COUNTY(S): Okanogan
ELEVATION RGE: 3720-4560



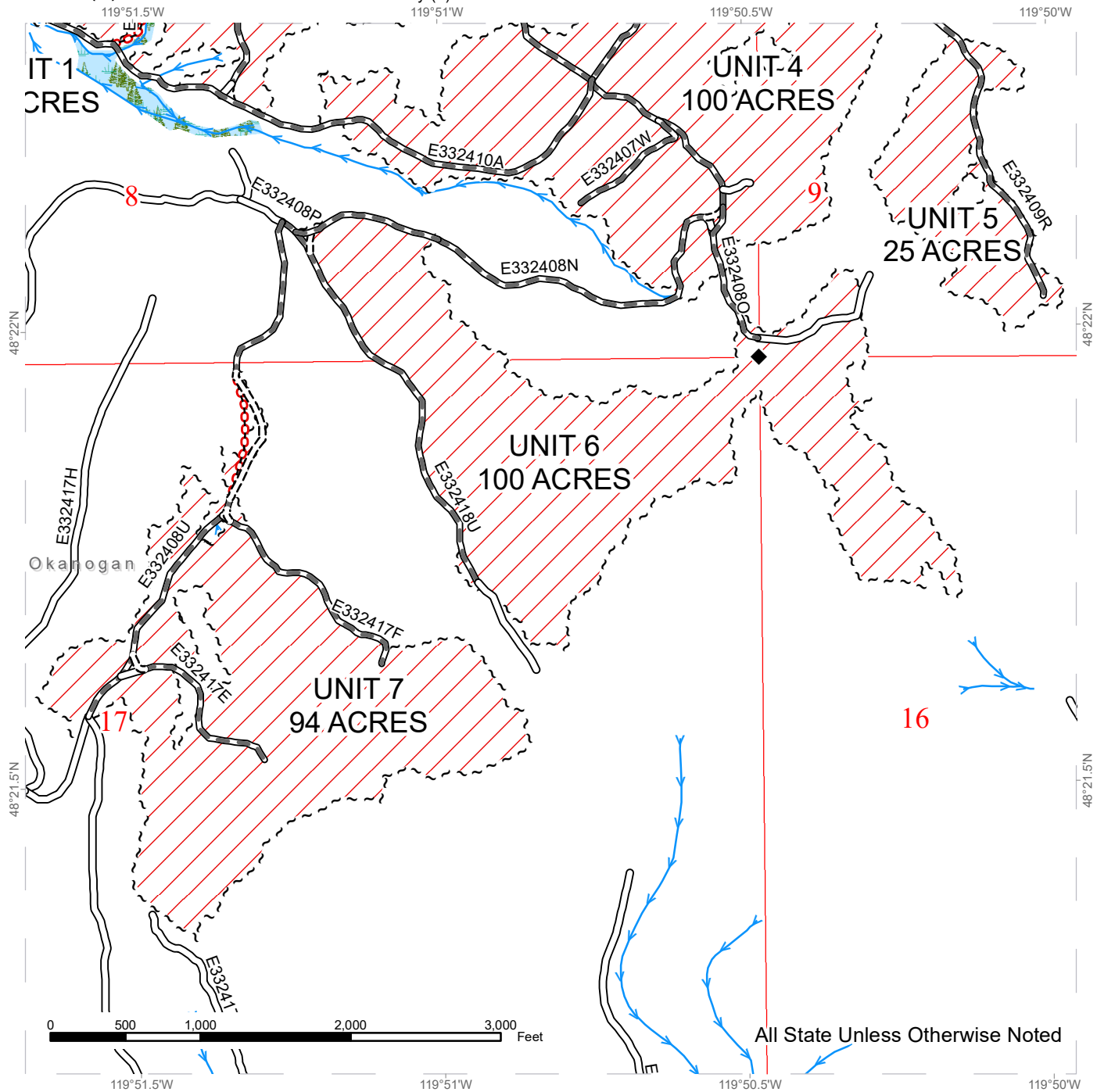
Public Land Survey Sections	Existing Roads	Streams
DNR Managed Lands	Required Pre-Haul Maintenance	Survey Monument
Variable Retention Harvest	Required Construction	
Wetlands - Non-forested	Required Abandonment	
Forested Wetland		
Sale Boundary Tags		



TIMBER SALE MAP

SALE NAME: Q WEST WOODY MT
AGREEMENT #: 30-101631
TOWNSHIP(S): T33R24E
TRUST(S): Common School and Indemnity (3)

REGION: Northeast Region
COUNTY(S): Okanogan
ELEVATION RGE: 3720-4560

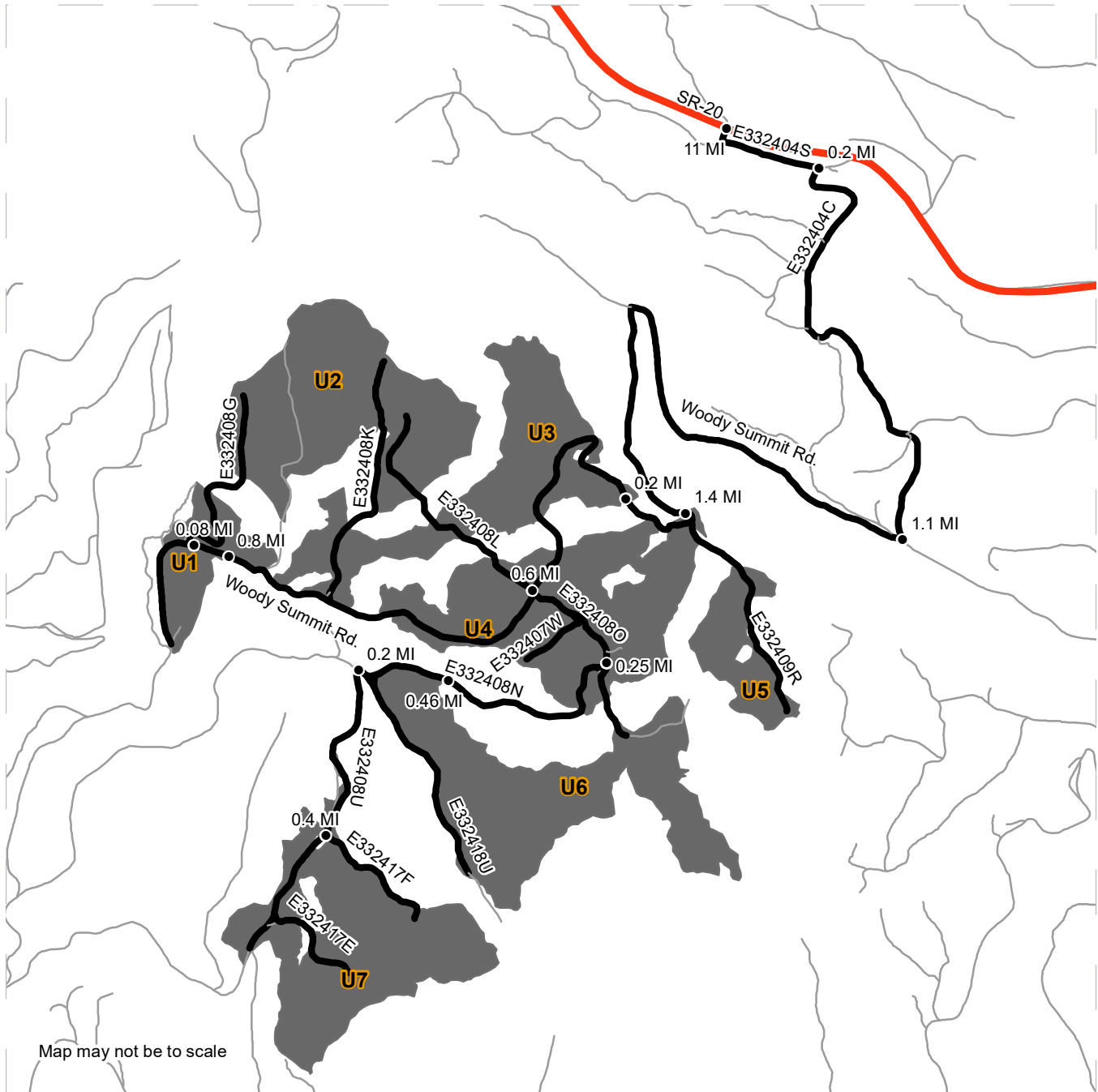


Public Land Survey Sections	Existing Roads	Streams
DNR Managed Lands	Required Pre-Haul Maintenance	Survey Monument
Variable Retention Harvest	Required Construction	
Forested Wetland	Required Abandonment	
Sale Boundary Tags		

DRIVING MAP

SALE NAME: Q WEST WOODY MT
AGREEMENT#: 30-101631
TOWNSHIP(S): T33R24E
TRUST(S): Common School and Indemnity (3)

REGION: Northeast Region
COUNTY(S): Okanogan
ELEVATION RGE: 3880-4320



	Timber Sale Unit
	Highway
	Haul Route
	Other Route
	Distance Indicator

DRIVING DIRECTIONS:

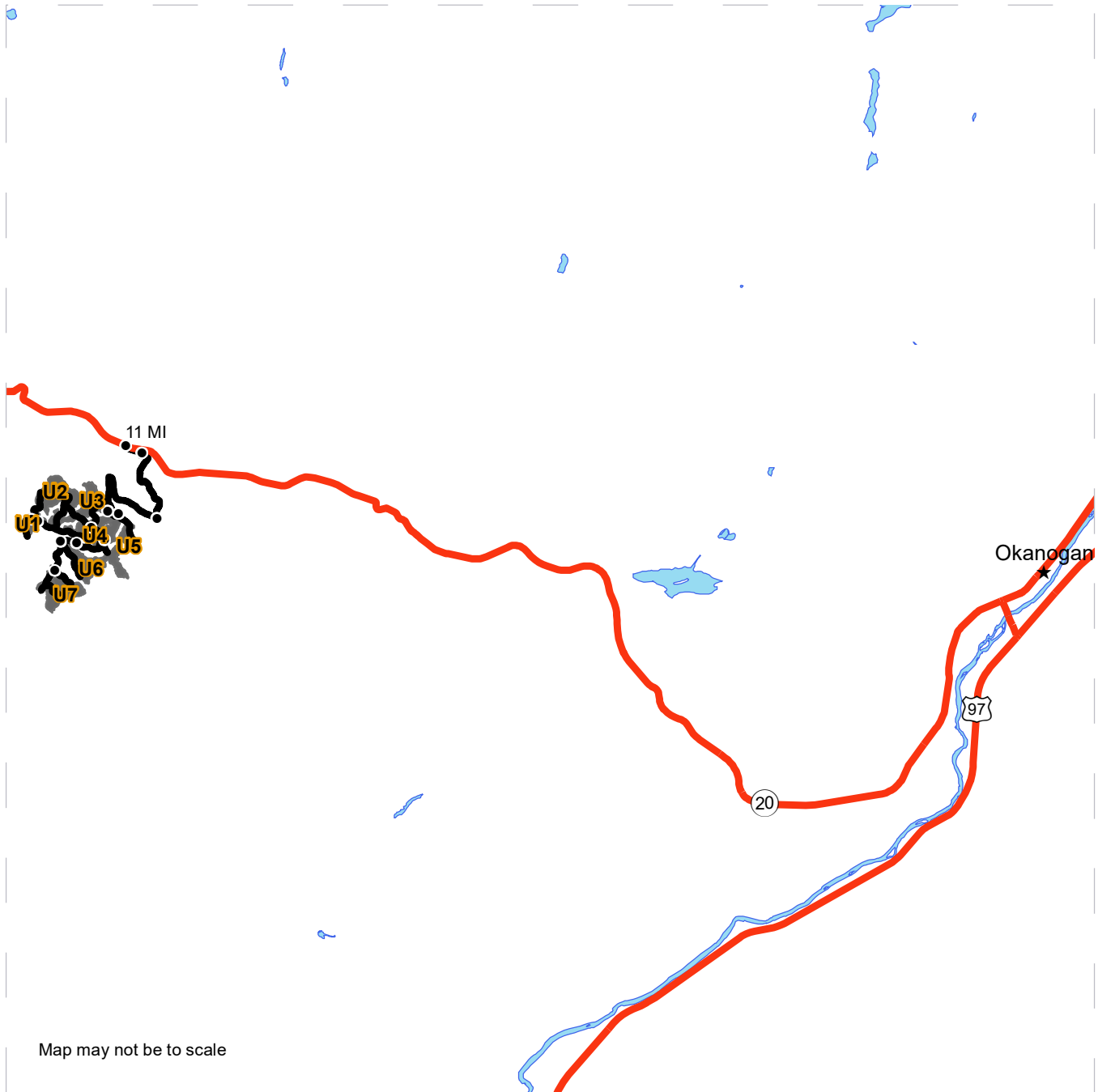
From the south bridge in Okanogan take State Highway 20 west toward Twisp. After approximately 11 miles turn left onto the E332404B road and go through the green gate on the south side of the highway onto road E3322404S. In 0.2 miles take right onto road E332404C. In 1.1 miles take a right onto Woody Summit Rd. Follow Woody Summit Rd. for 1.4 miles to reach unit 4. Take a right on road E332409R to reach unit 5. Continue on Woody Summit Rd. 0.2 miles to unit 3. Continue for 0.6 miles and take left onto road E332408O. Travel for 0.25 miles and then take a right onto road E332408N and travel 0.46 miles to unit 6. Continue for 0.2 miles and take left road E332408U travel another 0.4 miles to reach unit 7. From intersection of Woody Summit Rd. and E332408O travel on Woody Summit Rd. for 0.8 miles to reach unit 1. Continue for 0.08 miles and take right on E332408G to access unit 2.








DRIVING MAP

SALE NAME: Q WEST WOODY MT
AGREEMENT#: 30-101631
TOWNSHIP(S): T33R24E
TRUST(S): Common School and Indemnity (3)

REGION: Northeast Region
COUNTY(S): Okanogan
ELEVATION RGE: 3880-4320



Map may not be to scale

	Timber Sale Unit
	Highway
	Haul Route
	Distance Indicator
	Town

DRIVING DIRECTIONS:
 From the south bridge in Okanogan take State Highway 20 west toward Twisp. After approximately 11 miles turn left onto the E332404B road and go through the green gate on the south side of the highway onto road E3322404S. In 0.2 miles take right onto road E332404C. In 1.1 miles take a right onto Woody Summit Rd. Follow Woody Summit Rd. for 1.4 miles to reach unit 4. Take a right on road E332409R to reach unit 5. Continue on Woody Summit Rd. 0.2 miles to unit 3. Continue for 0.6 miles and take left onto road E332408O. Travel for 0.25 miles and then take a right onto road E332408N and travel 0.46 miles to unit 6. Continue for 0.2 miles and take left road E332408U travel another 0.4 miles to reach unit 7. From intersection of Woody Summit Rd. and E332408O travel on Woody Summit Rd. for 0.8 miles to reach unit 1. Continue for 0.08 miles and take right on E332408G to access unit 2.





TIMBER NOTICE OF SALE

SALE NAME: Q WILD WOOD

AGREEMENT NO: 30-101632

AUCTION: September 28, 2021 starting at 10:00 a.m.,
Northeast Region Office, Colville, WA

COUNTY: Pend Oreille

SALE LOCATION: Sale located approximately 25 miles northeast of Usk, WA.

**PRODUCTS SOLD
AND SALE AREA:**

All conifer species except for leave trees banded with blue paint or bounded by yellow leave tree area tags in Units 1, 2, 3 and 4 bounded by white timber sale boundary tags and all timber bounded by orange right of way tags.

All forest products above located on part(s) of Sections 18 all in Township 35 North, Range 45 East, Sections 12 all in Township 35 North, Range 44 East, W.M., containing 210 acres, more or less.

CERTIFICATION: This sale is certified under the Sustainable Forestry Initiative® program Standard (cert no: PwC-SFIFM-513)

ESTIMATED SALE VOLUMES AND QUALITY:

Species	Avg DBH	Ring Count	Total MBF	MBF by Grade									
				P	SM	1S	2S	3S	4S	5S	6S	UT	
Douglas fir	15.1		1,110				409	588	113				
Red cedar	12.5		941					676	265				
Larch	15.8		670				212	417	41				
Lodgepole	12.1		592					494	98				
Grand fir	12.5		403				160	165	78				
Hemlock	11.6		299				98	162	39				
Spruce	13.3		231				52	155	24				
White pine	10.5		31					20	11				
Alpine fir	15.7		31				17	12	2				
Ponderosa pine	16.3		4								4		
Sale Total			4,312										

MINIMUM BID: \$1,799,000.00

BID METHOD: Sealed Bids

**PERFORMANCE
SECURITY:** \$100,000.00

SALE TYPE: Lump Sum

EXPIRATION DATE: October 1, 2023

ALLOCATION: Export Restricted

BID DEPOSIT: \$179,900.00 or Bid Bond. Said deposit shall constitute an opening bid at the appraised price.

HARVEST METHOD: Cable, and Ground based equipment. Falling and Yarding will not be permitted from February 1 to June 1 unless authorized in writing by the Contract Administrator due to spring break up.

ROADS: 65.90 stations of required construction. 1087.98 stations of required prehaul maintenance. 205.31 stations of optional prehaul maintenance. Road construction will not be permitted from November 15 to June 1 unless authorized in writing by the



TIMBER NOTICE OF SALE

Contract Administrator due to frozen conditions and spring break up. The hauling of forest products will not be permitted from February 1 to June 1 unless authorized in writing by the Contract Administrator due to spring break up.

ACREAGE DETERMINATION

CRUISE METHOD: Acreage determined using GPS methods. Acreage shown above is net harvest acres in harvest units. Ponderosa pine and western red cedar: 8.0 - 17.5 inches dbh has a minimum top of 5.6 inch dib. All other species: 7.0 - 17.5 inches dbh has minimum top of 4.6 inch dib. All species 17.6 inches and greater dbh have a minimum top dib of 40% of dob at 16 feet or a 6 inch top whichever is greater.

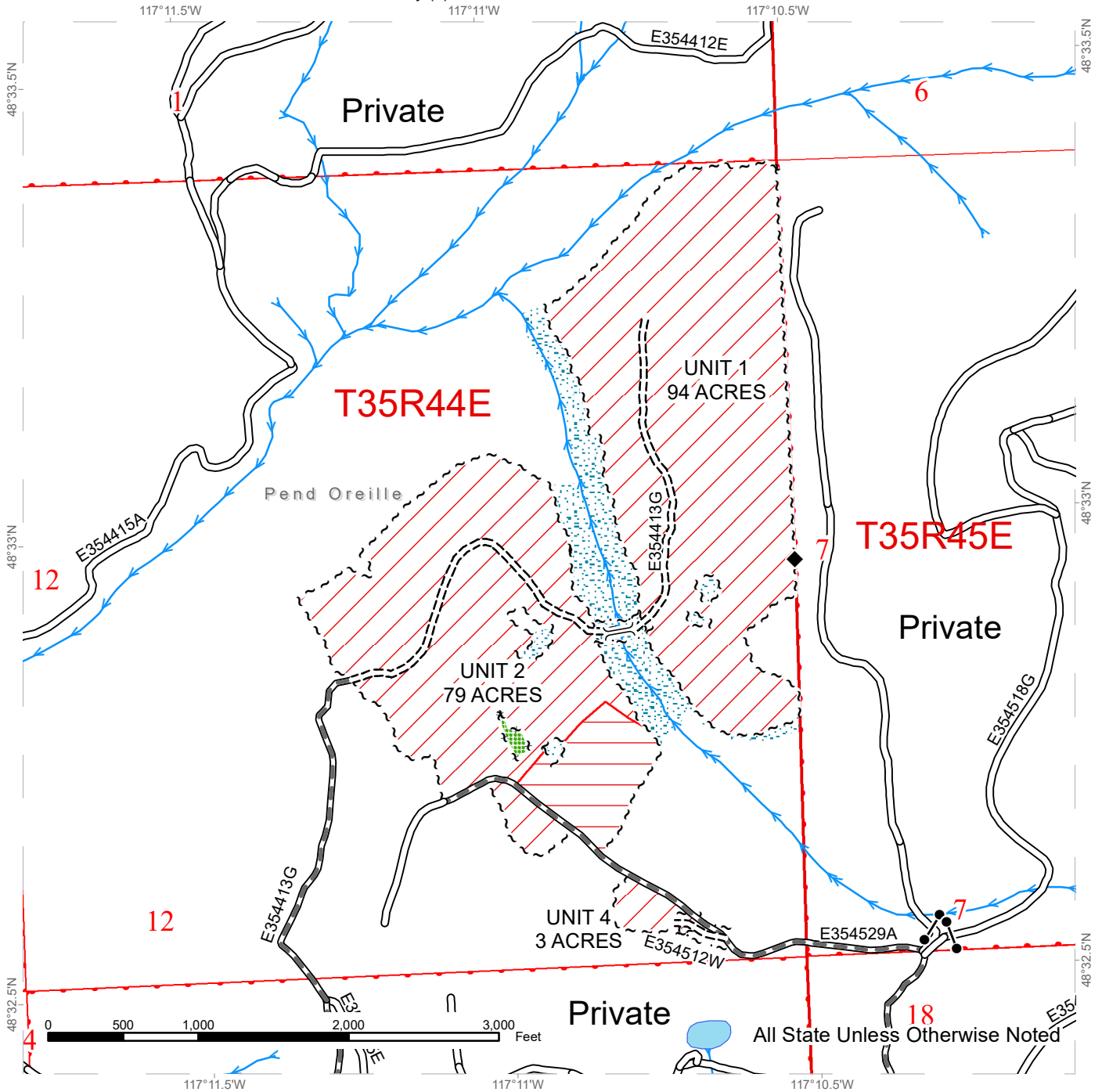
FEES: \$73,304.00 is due on day of sale. \$9.00 per MBF is due upon removal. These are in addition to the bid price.

SPECIAL REMARKS: Locked gates restricts access to the sale area and rock pit. Contact the Northeast Region Office at (509) 684-7474 for access. Cable or tethered equipment is required in portions of Unit 2 and 3, approximately 26 acres. Intermediate supports may be required.

TIMBER SALE MAP

SALE NAME: Q WILD WOOD
AGREEMENT #: 30-101632
TOWNSHIP(S): T35R44E, T35R45E
TRUST(S): Common School and Indemnity (3)

REGION: Northeast Region
COUNTY(S): Pend Oreille
ELEVATION RGE: 3960-4680

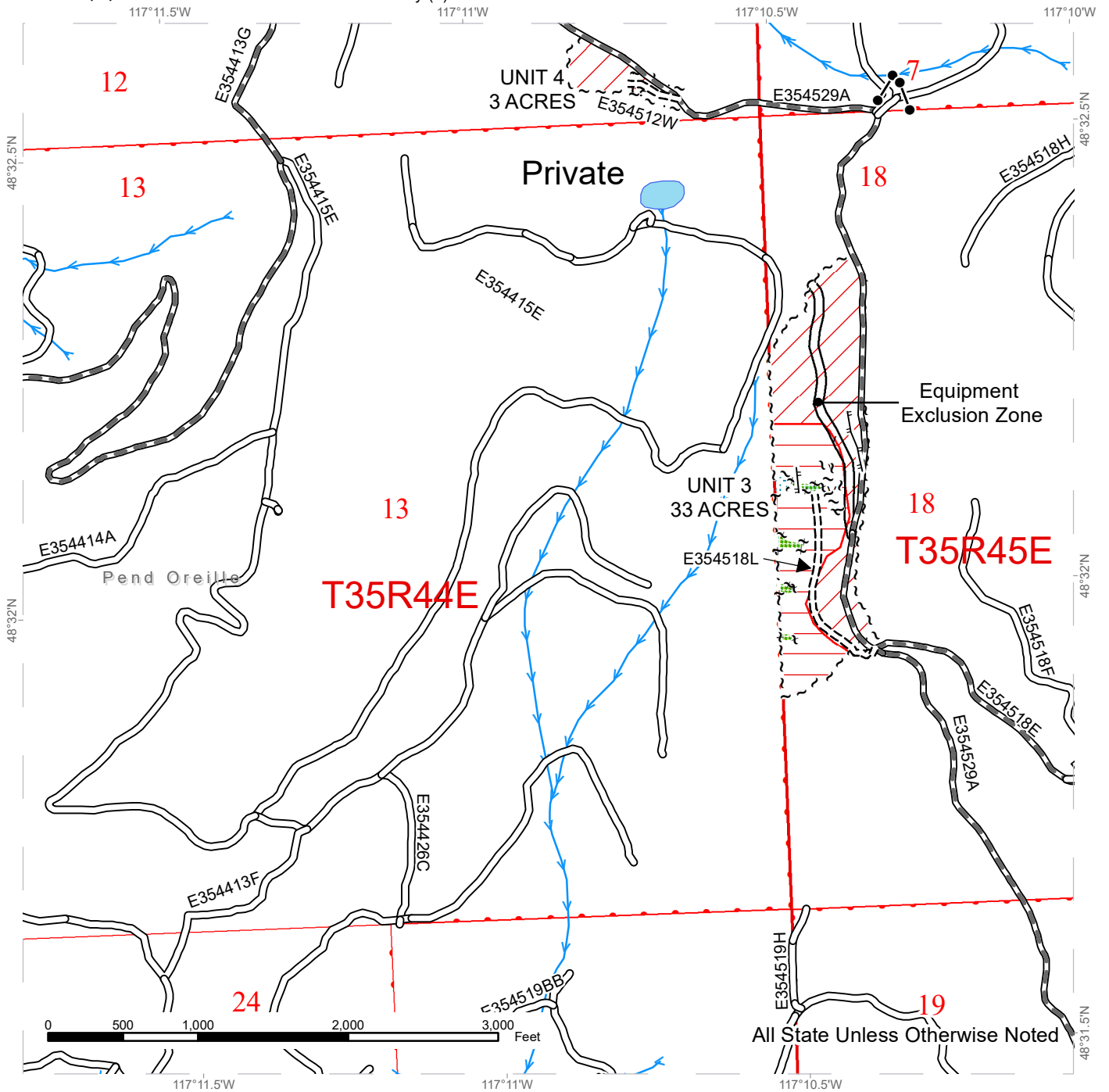


Public Land Survey Sections	Existing Roads	Streams
DNR Managed Lands	Required Pre-Haul Maintenance	Survey Monument
Variable Retention Harvest	Required Construction	Temporary Crossing
Cable Harvest	Sale Boundary Tags	Gate
Leave Tree Area	Leave Tree Tags	
Riparian Mgt Zone	Right of Way Tags = 1 acre	

TIMBER SALE MAP

SALE NAME: Q WILD WOOD
AGREEMENT #: 30-101632
TOWNSHIP(S): T35R44E, T35R45E
TRUST(S): Common School and Indemnity (3)

REGION: Northeast Region
COUNTY(S): Pend Oreille
ELEVATION RGE: 3960-4680



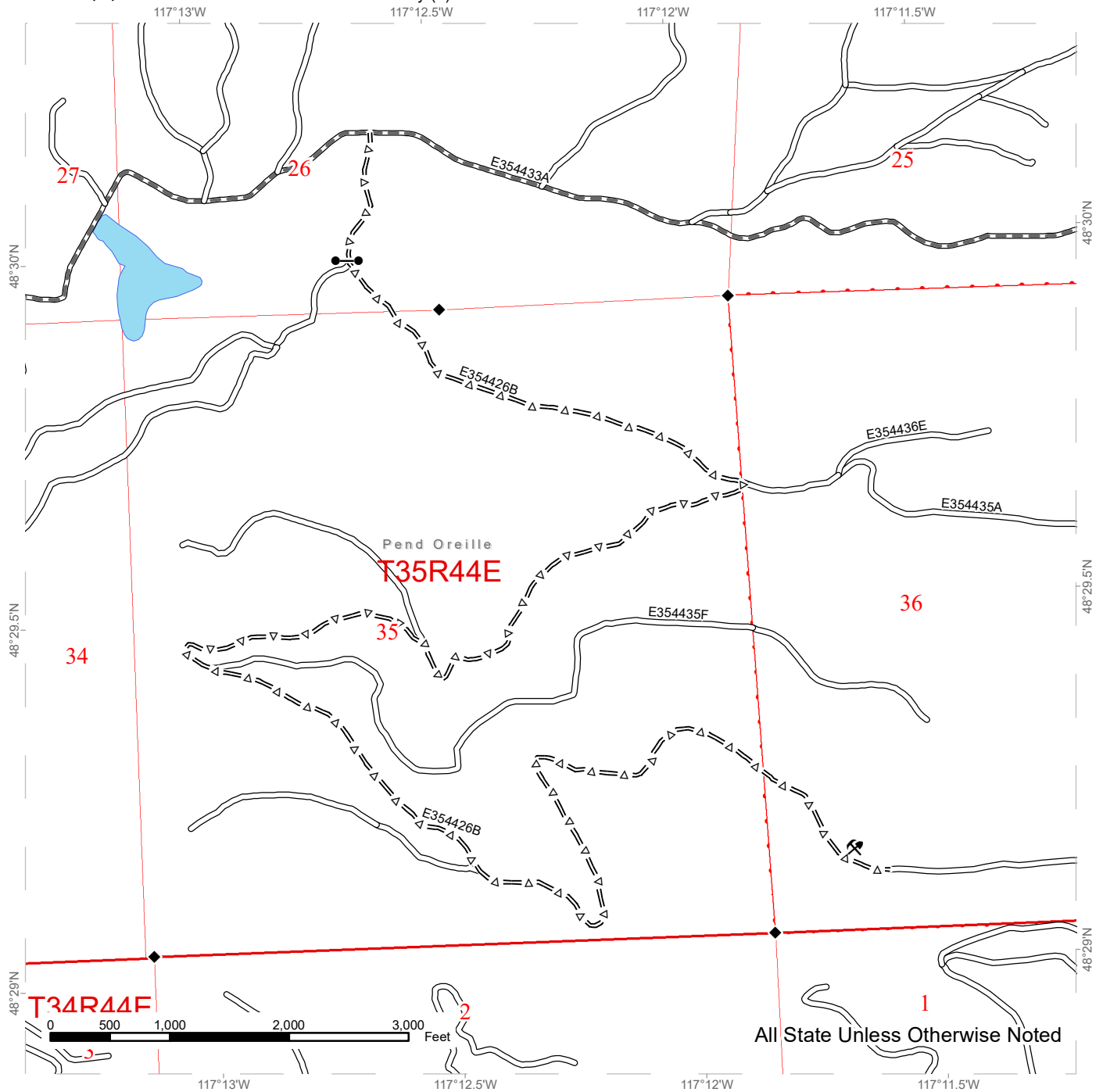
	Public Land Survey Sections		Existing Roads		Streams
	DNR Managed Lands		Required Pre-Haul Maintenance		Gate
	Variable Retention Harvest		Required Construction		Sale Boundary Tags
	Cable Harvest		Designated Skid Trail		Leave Tree Tags
	Leave Tree Area		Right of Way Tags = 1 acre		
	Riparian Mgt Zone				
	Equipment Exclusion Zone				



TIMBER SALE MAP

SALE NAME: Q WILD WOOD
AGREEMENT #: 30-101632
TOWNSHIP(S): T35R44E, T35R45E
TRUST(S): Common School and Indemnity (3)

REGION: Northeast Region
COUNTY(S): Pend Oreille
ELEVATION RGE: 3960-4680

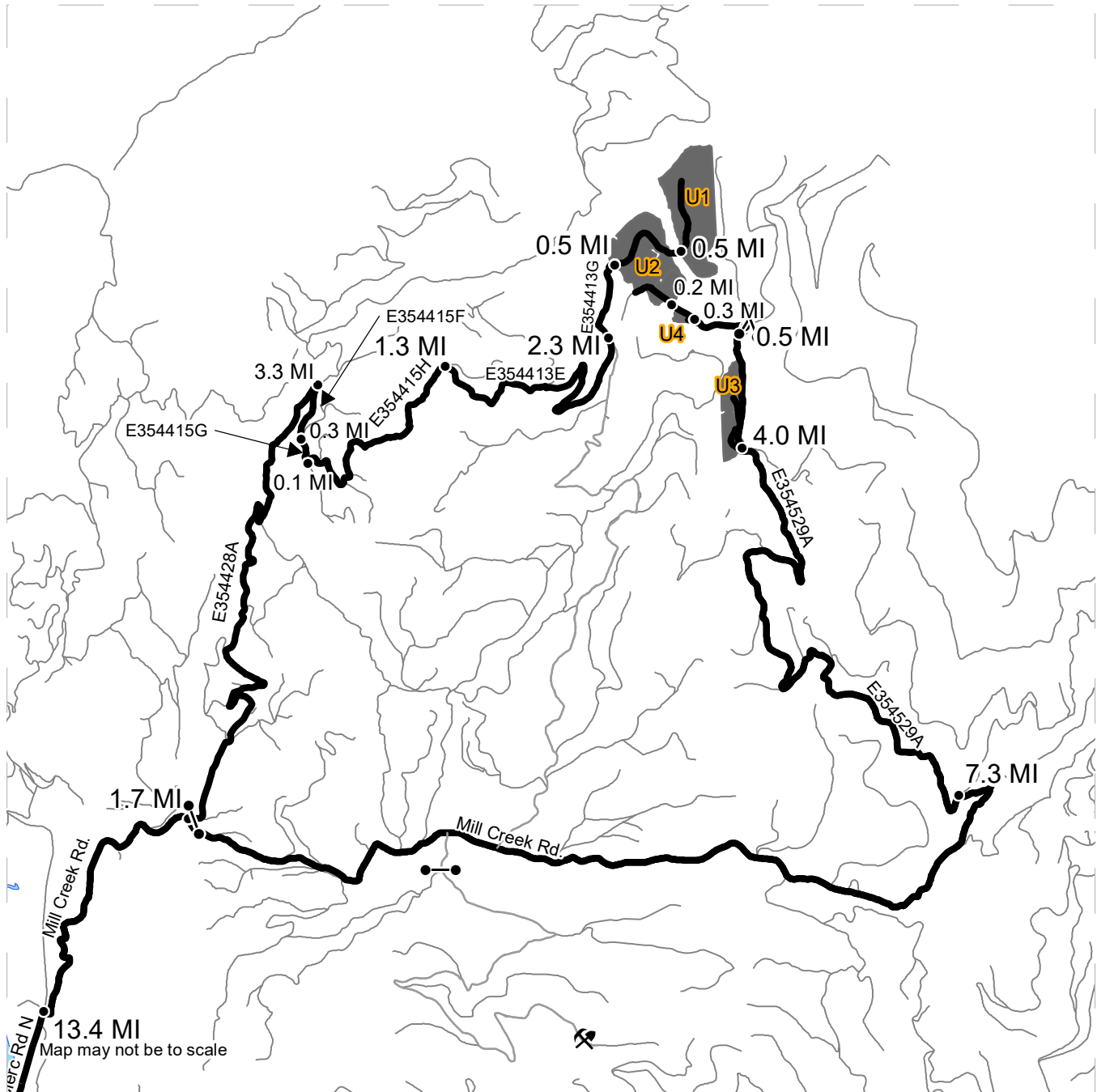


Public Land Survey Sections	Existing Roads	Survey Monument
DNR Managed Lands	Required Pre-Haul Maintenance	Gate
	Optional Pre-Haul Maintenance	Rock Pit

DRIVING MAP

SALE NAME: Q WILD WOOD
AGREEMENT#: 30-101632
TOWNSHIP(S): T35R44E, T35R45E
TRUST(S): Common School and Indemnity (3)

REGION: Northeast Region
COUNTY(S): Pend Oreille
ELEVATION RGE: 3960-4680



	Timber Sale Unit
	Haul Route
	Other Route
	Distance Indicator
	Gate
	Rock Pit

DRIVING DIRECTIONS:

To Units 1 and 2. From Usk, WA travel east on Kings Lake Road for 0.3 miles. Turn left on North LeClerc Road and travel north for 13.4 miles. Turn right onto Mill Creek Rd. (E354433A) and continue for 1.7 miles. Take a left on (E354428A) and travel for 3.3 miles. Take a right on road (E354415F) and travel 0.3 miles to the (E354415G) road. Continue south on the (E354415G) for 0.1 miles. Turn left on the (E354415H) road and travel for 1.3 miles. Turn right on the (E354413E) road and travel for 2.3 miles. Turn left on the (E354413G) road and travel for 0.4 miles to Unit 2. Continue traveling on the (E354413G) road for 0.5 miles to Unit 1.

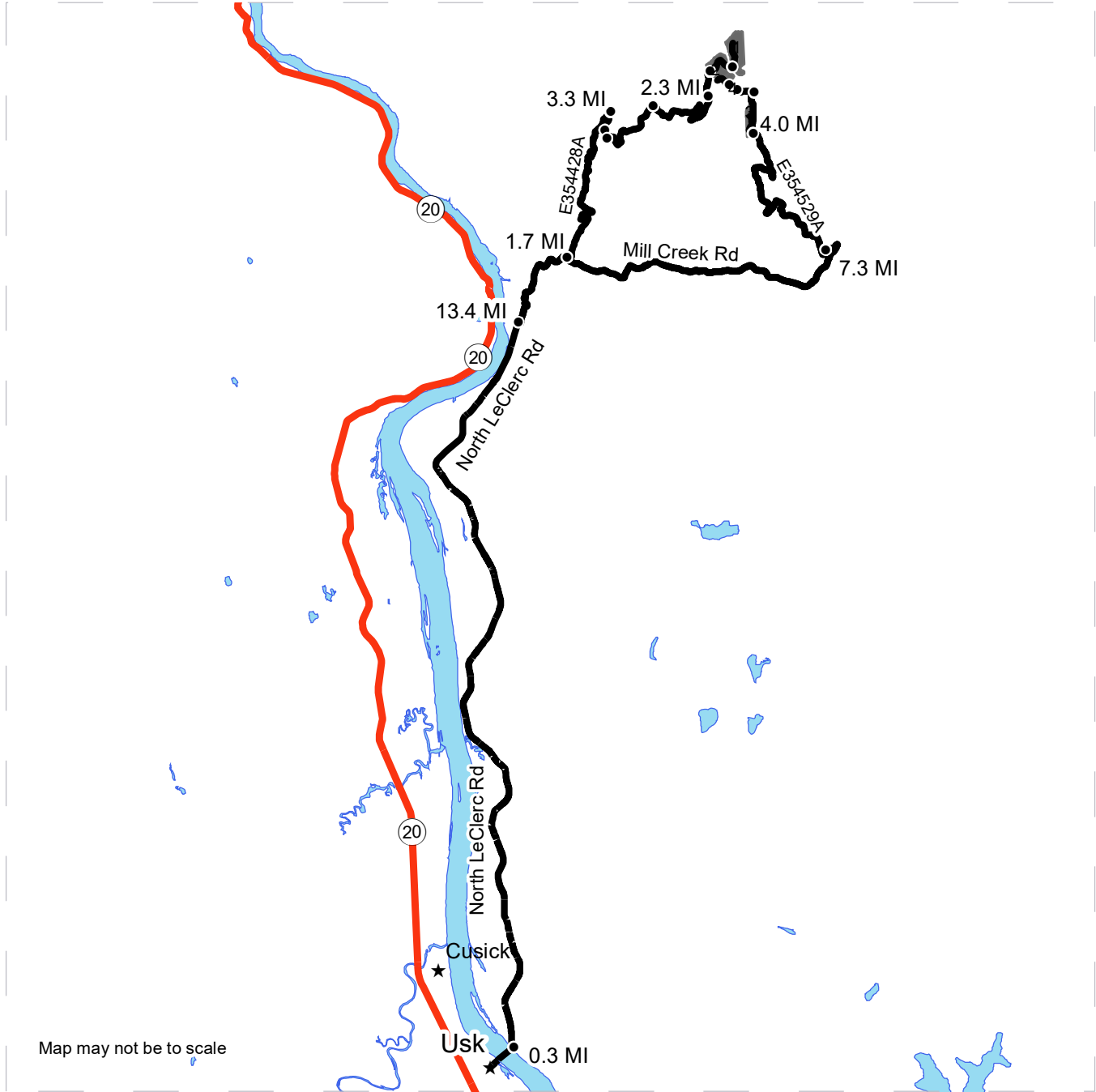
To Units 3 and 4. From Usk, WA travel east for 0.3 miles across the bridge on Kings Lake Rd. At the intersection, turn left onto North LeClerc Rd. and continue for 13.4 miles. Turn right onto Mill Creek Rd. (E354433A) and continue for 7.3 miles. Turn left onto road (E354529A) and travel 4.0 miles to Unit 3. Continue for 0.5 miles and then turn left at intersection to stay on road (E354529A) and travel for 0.3 miles to Unit 4. Continue for 0.2 miles to reach Unit 2



DRIVING MAP

SALE NAME: Q WILD WOOD
AGREEMENT#: 30-101632
TOWNSHIP(S): T35R44E, T35R45E
TRUST(S): Common School and Indemnity (3)

REGION: Northeast Region
COUNTY(S): Pend Oreille
ELEVATION RGE: 3960-4680



- Timber Sale Unit
- Highway
- Haul Route
- Distance Indicator
- ★ Town

DRIVING DIRECTIONS:

To Units 1 and 2. From Usk, WA travel east on Kings Lake Road for 0.3 miles. Turn left on North LeClerc Road and travel north for 13.4 miles. Turn right onto Mill Creek Rd. (E354433A) and continue for 1.7 miles. Take a left on (E354428A) and travel for 3.3 miles. Take a right on road (E354415F) and travel 0.3 miles to the (E354415G) road. Continue south on the (E354415G) for 0.1 miles. Turn left on the (E354415H) road and travel for 1.3 miles. Turn right on the (E354413E) road and travel for 2.3 miles. Turn left on the (E354413G) road and travel for 0.4 miles to Unit 2. Continue traveling on the (E354413G) road for 0.5 miles to Unit 1.

To Units 3 and 4. From Usk, WA travel east for 0.3 miles across the bridge on Kings Lake Rd. At the intersection, turn left onto North LeClerc Rd. and continue for 13.4 miles. Turn right onto Mill Creek Rd. (E354433A) and continue for 7.3 miles. Turn left onto road (E354529A) and travel 4.0 miles to Unit 3. Continue for 0.5 miles and then turn left at intersection to stay on road (E354529A) and travel for 0.3 miles to Unit 4. Continue for 0.2 miles to reach Unit 2





TIMBER NOTICE OF SALE

SALE NAME: SERENITY NOW

AGREEMENT NO: 30-100467

AUCTION: September 30, 2021 starting at 10:00 a.m., **COUNTY:** Clark, Skamania
Pacific Cascade Region Office, Castle Rock, WA

SALE LOCATION: Sale located approximately 24 miles east of Woodland, WA

**PRODUCTS SOLD
AND SALE AREA:**

All timber, except leave trees bound by yellow "Leave Tree Area" tags, leave trees marked with blue paint and snags, bounded by the following:

Unit 1, white "Timber Sale Boundary" tags with pink flagging and a timber type change on the north boundary;

Unit 2, white "Timber Sale Boundary" tags with pink flagging, pink flag line and the S-3000;

Unit 3, white "Timber Sale Boundary" tags with pink flagging;

Unit 4, white "Timber Sale Boundary" tags with pink flagging;

Unit 5 ROW and Unit 6 ROW, orange "Right-of-Way" tags and orange flashers.

All forest products above located on part(s) of Sections 7 all in Township 6 North, Range 5 East, Sections 12 and 13 all in Township 6 North, Range 4 East, W.M., containing 147 acres, more or less.

CERTIFICATION: This sale is certified under the Sustainable Forestry Initiative® program Standard (cert no: PwC-SFIFM-513)

ESTIMATED SALE VOLUMES AND QUALITY:

Species	Avg DBH	Ring Count	Total MBF	MBF by Grade								
				1P	2P	3P	SM	1S	2S	3S	4S	UT
Douglas fir	21.2	10	3,910				634		2,085	1,003	177	11
Hemlock	17.3		2,727				11		1,546	917	234	18
Red cedar	18.2		14							11		3
Noble fir	11		3									3
Sale Total			6,654									

MINIMUM BID: \$1,873,000.00 **BID METHOD:** Sealed Bids

PERFORMANCE SECURITY: \$100,000.00 **SALE TYPE:** Lump Sum

EXPIRATION DATE: October 31, 2024 **ALLOCATION:** Export Restricted

BID DEPOSIT: \$187,300.00 or Bid Bond. Said deposit shall constitute an opening bid at the appraised price.



TIMBER NOTICE OF SALE

HARVEST METHOD: Cable, Cable-Assist, Shovel, and Track skidder. This sale can be harvested with cable systems, including cable assist and shovel systems. This sales is estimated to be 35% cable based harvest systems and 65% ground based harvest systems. Ground Based Yarding will not be permitted from November 1 to April 30 unless authorized in writing by the Contract Administrator.

ROADS: 98.67 stations of required construction. 3.01 stations of required reconstruction. 21.92 stations of optional construction. 28.61 stations of optional reconstruction. 169.11 stations of required prehaul maintenance. Rock used in accordance with the quantities on the ROCK LIST may be obtained from the COSMO PIT (S07, T06N, R05E, W.M.), the S-1080 Pit (S18, T06N, R05E, W.M. or any commercial source with CA approval at the Purchaser's expense. This project requires a bridge replacement in Section 36, T06N, R04E, W.M.. Bridge replacement does not have a seasonal restriction but work may not occur on weekend or State holidays. Bridge installation must be completed by April 30, 2023. Road construction will not be permitted from October 1 to April 30 unless authorized in writing by the Contract Administrator. The hauling of forest products will not be permitted from October 1 to April 30 unless authorized in writing by the Contract Administrator.

ACREAGE DETERMINATION

CRUISE METHOD: The sale acres were determined by GPS. The sale area was cruised using a variable plot cruise method.

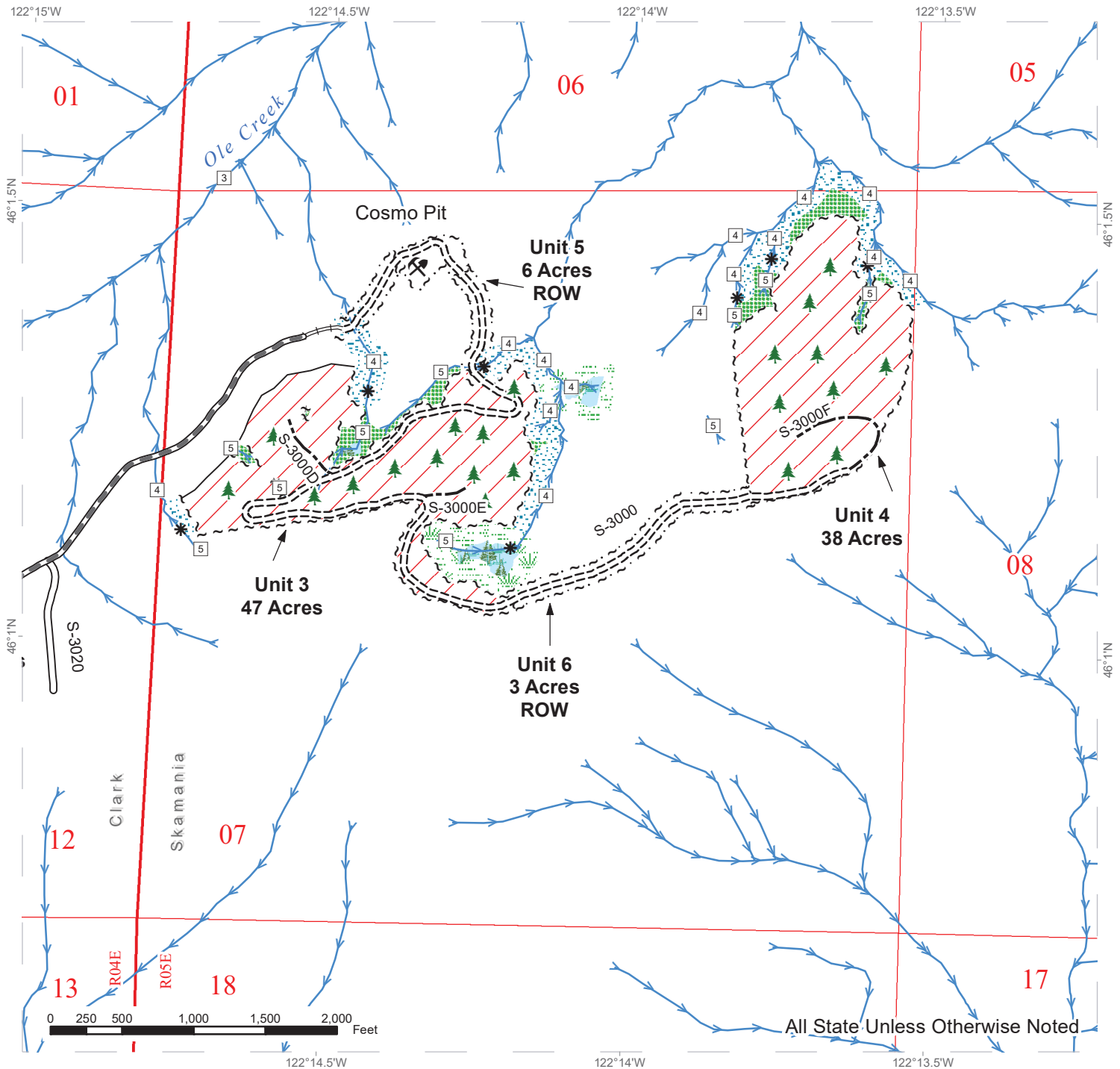
FEES: \$113,118.00 is due on day of sale. \$9.00 per MBF is due upon removal. These are in addition to the bid price.

SPECIAL REMARKS: Estimated 302 Mbf HQ 3 Saw, 561 Mbf HQ 2 Saw and 525 Mbf Special Mill Douglas-fir along with 11 Mbf of Special Mill Western Hemlock. See cruise for further details.

TIMBER SALE MAP

SALE NAME: SERENITY NOW
AGREEMENT #: 30-100467
TOWNSHIP(S): T6R4E, T6R5E
TRUST(S): Common School and Indemnity (3), State Forest Purchase (2)

REGION: Pacific Cascade Region
COUNTY(S): Clark, Skamania
ELEVATION RGE: 2200-2840



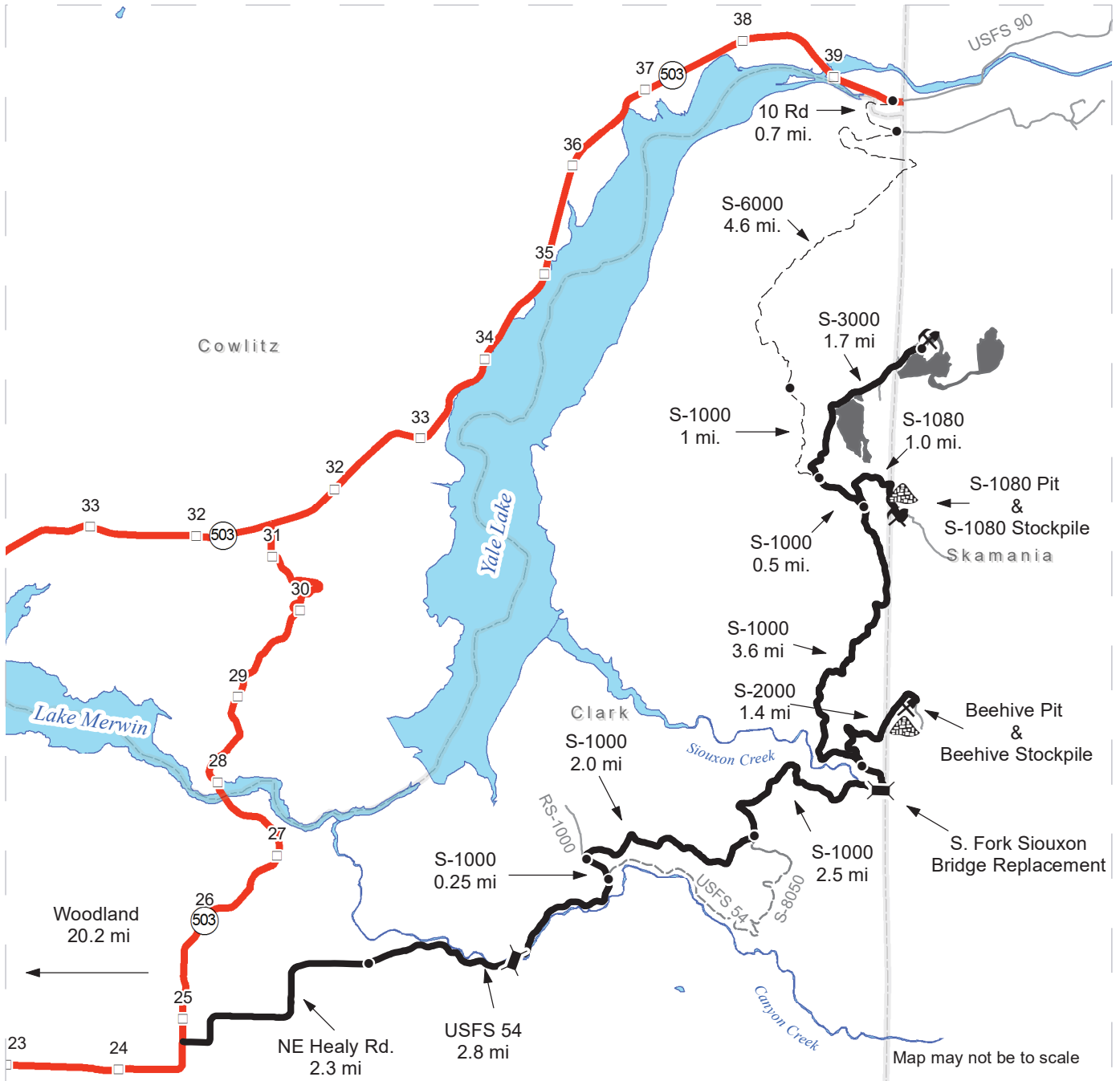
Variable Retention Harvest	Existing Roads	Sale Boundary Tags	Streams
Leave Tree Area	Required Pre-Haul Maintenance	Leave Tree Tags	Stream Type
Riparian Mgt Zone	Required Construction	Right of Way Tags	Stream Type Break
Forested Wetland	Required Reconstruction	Timber Type Change	Leave Tree Area <1/4-acre
Wetland Mgt Zone	Optional Construction	Rock Pit	



DRIVING MAP

SALE NAME: SERENITY NOW
AGREEMENT#: 30-100467
TOWNSHIP(S): T6R4E, T6R5E
TRUST(S): Common School and Indemnity (3), State Forest Purchase (2)

REGION: Pacific Cascade Region
COUNTY(S): Clark, Skamania
ELEVATION RGE: 2200-2840



- Timber Sale Unit
- Haul Route
- Other Road
- View Only Route
- Equipment Route
- Milepost Markers
- Bridge
- Distance Indicator
- Rock Pit
- Stockpile

DRIVING DIRECTIONS:

SEE ATTACHED





TIMBER NOTICE OF SALE

SALE NAME: FONTAL

AGREEMENT NO: 30-100354

AUCTION: September 29, 2021 starting at 10:00 a.m., COUNTY: Snohomish Northwest Region Office, Sedro Woolley, WA

SALE LOCATION: Sale located approximately 4 miles south of Monroe, WA.

PRODUCTS SOLD AND SALE AREA:

All timber bounded by white timber sale boundary tags and property lines, except cedar salvage (cedar snags, preexisting dead and down cedar trees and cedar logs), trees marked with blue paint on the bole and root collar, and forest products tagged out by yellow leave tree area tags in Unit #1.

All timber bounded by white timber sale boundary tags, property lines, BPA power line right-of-way, and the CLF-06 Road, except cedar salvage (cedar snags, preexisting dead and down cedar trees and cedar logs), trees marked with blue paint on the bole and root collar, and forest products tagged out by yellow leave tree area tags in Unit #2.

All timber bounded by white timber sale boundary tags, property lines and BPA power line right-of-way, except cedar salvage (cedar snags, preexisting dead and down cedar trees and cedar logs), trees marked with blue paint on the bole and root collar, and forest products tagged out by yellow leave tree area tags in Unit #3.

All timber bounded by white timber sale boundary tags, property lines and Lake Fontal Road, except cedar salvage (cedar snags, preexisting dead and down cedar trees and cedar logs), trees marked with blue paint on the bole and root collar, and forest products tagged out by yellow leave tree area tags in Unit #4 (collectively labeled 4A, 4B and 4C).

All timber bounded by orange right-of-way tags, except that title to the timber within the right-of-way associated with areas of road construction (located outside of units) is not conveyed to the Purchaser unless the road segment is actually constructed.

All forest products above located on part(s) of Sections 29 and 30 all in Township 27 North, Range 7 East, W.M., containing 101 acres, more or less.

CERTIFICATION: This sale is certified under the Sustainable Forestry Initiative® program Standard (cert no: PwC-SFIFM-513)

ESTIMATED SALE VOLUMES AND QUALITY:

Table with columns: Species, Avg DBH, Ring Count, Total MBF, and MBF by Grade (1P, 2P, 3P, SM, 1S, 2S, 3S, 4S, UT). Rows include Douglas fir, Hemlock, Red alder, Red cedar, Maple, Cottonwood, and Sale Total.

MINIMUM BID: \$1,075,000.00

BID METHOD: Sealed Bids



TIMBER NOTICE OF SALE

conditions are suitable. Rubber-tired skidders or non-tracked equipment shall not be permitted. The CLF-11 Road in Unit 4A may not overwinter more than one season. All road building and logging operations in Unit 4A must be completed in one season between April 1 and October 31.

4. Sale has a number of adjacent neighboring properties. Extreme hazard abatement is associated with the timber sale. This includes utilities, nearby structures, and county roads in Unit 1, nearby structures in Unit 2 and Unit 3, and county roads and nearby structures in Unit 4. Unit 2 and Unit 3 are adjacent to BPA power lines. Onsite discussion with Contract Administrator and a safety plan is required no later than 2 weeks before operations around nearby structures in Unit 1 and Unit 2.

5. No operations before 7 AM and after 5 PM weekdays. No operations on weekends, or on state holidays due to noise control for the neighboring houses.

6. The sale is accessed by the High Rock Road, Lake Fontal Road, and Cherry Valley Road. Purchaser must design a traffic control plan in writing that addresses measures for traffic control, traffic safety, and protections for pavement and low hanging utility lines. The traffic control plan must be approved by the Contract Administrator before any operations may begin.

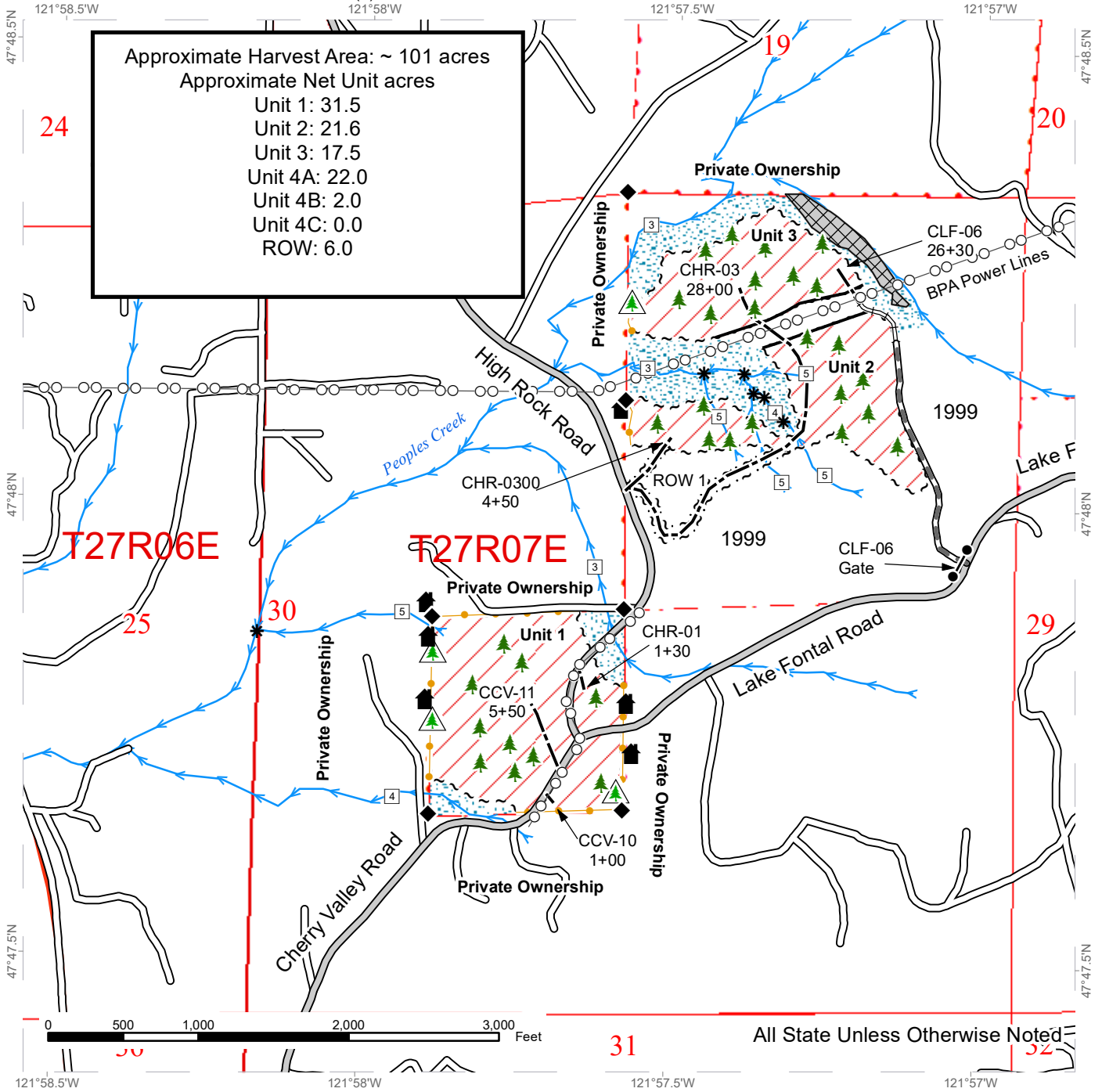
7. Cedar salvage is not permitted for this sale and shall not be waived.

TIMBER SALE MAP

SALE NAME: FONTAL
AGREEMENT #: 30-100354
TOWNSHIP(S): T27R7E
TRUST(S): State Forest Transfer (1)

REGION: Northwest Region
COUNTY(S): Snohomish
ELEVATION RGE: 400-1120

Approximate Harvest Area: ~ 101 acres
 Approximate Net Unit acres
 Unit 1: 31.5
 Unit 2: 21.6
 Unit 3: 17.5
 Unit 4A: 22.0
 Unit 4B: 2.0
 Unit 4C: 0.0
 ROW: 6.0



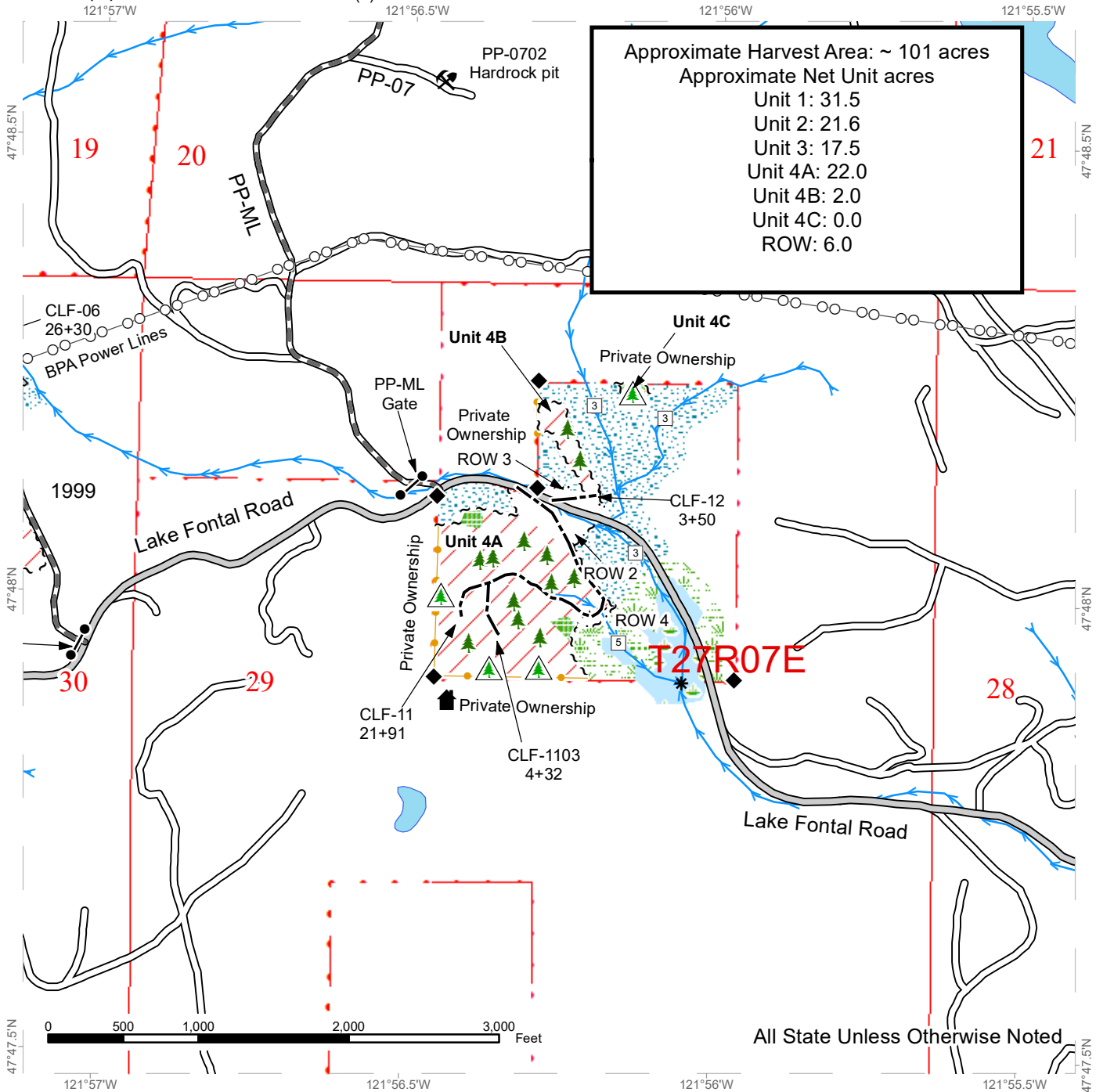
All State Unless Otherwise Noted



TIMBER SALE MAP

SALE NAME: FONTAL
AGREEMENT #: 30-100354
TOWNSHIP(S): T27R7E
TRUST(S): State Forest Transfer (1)

REGION: Northwest Region
COUNTY(S): Snohomish
ELEVATION RGE: 400-1120



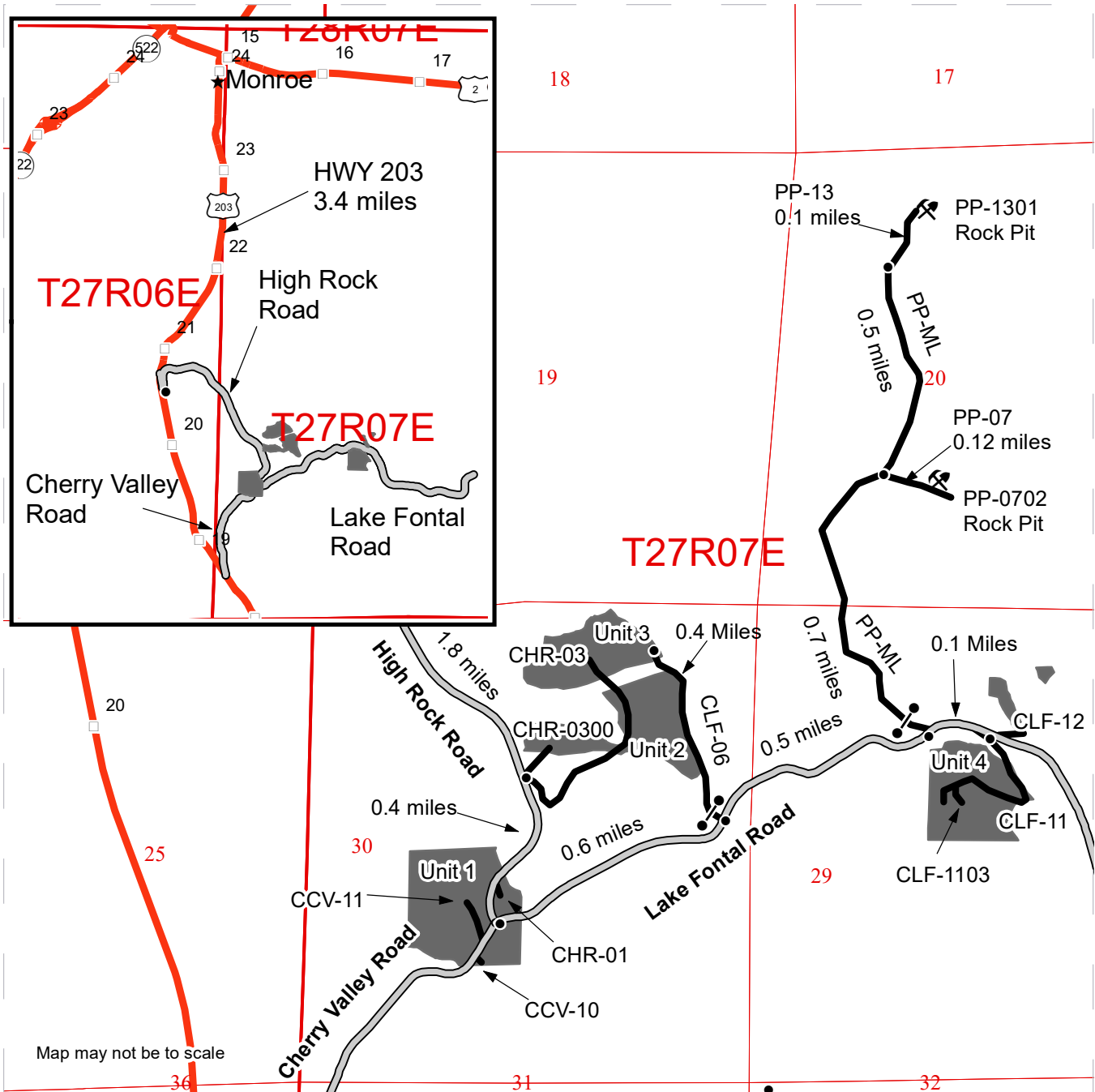
All State Unless Otherwise Noted



DRIVING MAP

SALE NAME: FONTAL
AGREEMENT#: 30-100354
TOWNSHIP(S): T27R7E
TRUST(S): State Forest Transfer (1)

REGION: Northwest Region
COUNTY(S): Snohomish
ELEVATION RGE: 400-1120



Map may not be to scale

- Timber Sale Unit
- Haul Route
- County Road
- Highway
- Milepost Markers
- Distance Indicator
- Gate
- Rock Pit

Driving Directions:
 Travel 3.4 miles south on WA-203 from Monroe. Turn left onto High Rock Road and follow for 1.8 miles to reach CHR-03. Continue on High Rock Road for 0.4 miles to reach the intersection with High Rock Road, Cherry Valley Road, and Lake Fontal Road. This intersection is in the middle of unit 1. Turn left onto Lake Fontal Road and continue for 0.6 miles to reach the CLF-06 gate. Unit 2 and Unit 3 are accessed off of the CLF-06 road which ends 0.4 miles from the gate. Continue on Lake Fontal road past the CLF-06 gate for another 0.5 miles to access the Peoples Mainline (PP-ML) and an additional 0.1 miles to access unit 4. Turn onto the PP-ML and continue for 0.7 miles to reach the intersection with the PP-07 road. Turn onto the PP-07 road and continue for 0.12 miles to reach the PP-0702 rock pit. Continue past the PP-ML and PP-07 intersection for another 0.5 miles to reach the PP-13 road. Keep left on the PP-13 road and continue for 0.1 miles to reach the PP-1301 rock pit.





TIMBER NOTICE OF SALE

SALE NAME: SLAPSTICK HARDWOOD

AGREEMENT NO: 30-100487

AUCTION: September 29, 2021 starting at 10:00 a.m., **COUNTY:** Skagit, Snohomish
Northwest Region Office, Sedro Woolley, WA

SALE LOCATION: Sale located approximately 16 miles north of Arlington, WA

**PRODUCTS SOLD
AND SALE AREA:**

All timber (including preexisting dead and down cedar trees and cedar logs) bounded by white timber sale boundary tags and property lines, except preexisting dead and down cedar trees and cedar logs marked with blue paint, cedar snags, trees marked with blue paint on the bole and root collar, and forest products tagged out by yellow leave tree area tags in the Unit.

All forest products above located on part(s) of Sections 5 all in Township 32 North, Range 5 East, Sections 32 all in Township 33 North, Range 5 East, W.M., containing 72 acres, more or less.

CERTIFICATION: This sale is certified under the Sustainable Forestry Initiative® program Standard (cert no: PwC-SFIFM-513)

ESTIMATED SALE VOLUMES AND QUALITY:

Species	Avg DBH	Ring Count	Total MBF	MBF by Grade								
				1P	2P	3P	SM	1S	2S	3S	4S	UT
Douglas fir	14.5	5	291						97	149	31	14
Maple	14.4		148						67	23	34	24
Red alder	11.3		113						2	16	76	20
Cottonwood	16.5		88						46		38	4
Birch	11.1		10						2	3	4	1
Red cedar	16		4							3	1	
Cedar Salvage			1									1
Hemlock	10.9		1							1		
Sale Total			656									

MINIMUM BID: \$41,000.00 **BID METHOD:** Sealed Bids

PERFORMANCE SECURITY: \$8,200.00 **SALE TYPE:** Lump Sum

EXPIRATION DATE: March 31, 2023 **ALLOCATION:** Export Restricted

BID DEPOSIT: \$4,100.00 or Bid Bond. Said deposit shall constitute an opening bid at the appraised price.

HARVEST METHOD: Cable or tethered equipment; tracked-based equipment and/or “6-wheeled rubber-tired skidders with over-the-tire tracks spanning both sets of rear tires” (See below for restrictions) on sustained slopes 35% or less; self-leveling equipment on sustained slopes 50% or less.

Purchaser must obtain prior written approval from the Contract Administrator for areas as to where to utilize “6-wheeled rubber-tired skidders with over-the-tire tracks spanning



TIMBER NOTICE OF SALE

both sets of rear tires” equipment prior to use. If ground disturbance is causing excessive damage, as determined by the Contract Administrator, this equipment will no longer be authorized. Falling and Yarding will not be permitted from November 1 to March 31 unless authorized in writing by the Contract Administrator (THIS PERTAINS TO GROUND-BASED EQUIPMENT ONLY) to reduce soil damage and erosion.

ROADS:

16.36 stations of required construction. 5.58 stations of required reconstruction. 4.30 stations of optional construction. 26.54 stations of optional reconstruction. 26.03 stations of required prehaul maintenance.

Rock may be obtained from the following source on State land at no charge to the Purchaser: LM-04 Gravel Pit at station 2+25 of the LM-04 Road.

Development of an existing rock source will involve clearing and stripping overburden and processing pit run.

An estimated total quantity of rock needed for this proposal: 32 cubic yards of riprap and 7,150 cubic yards of ballast rock.

Additional restrictions apply, see Remarks section below.

Road work and the hauling of rock will not be permitted from November 1 to March 31 unless authorized in writing by the Contract Administrator to reduce soil damage and siltation. The hauling of forest products will not be permitted from November 1 to March 31 unless authorized in writing by the Contract Administrator to reduce soil damage and siltation.

ACREAGE DETERMINATION

CRUISE METHOD: Acres determined by GPS/GIS. Cruise was conducted via variable plot sample type. See Cruise Narrative for further details. Shapefiles of units are available upon request after the BNR meeting in which the sale is presented.

FEES:

\$11,152.00 is due on day of sale. \$9.00 per MBF is due upon removal. These are in addition to the bid price.

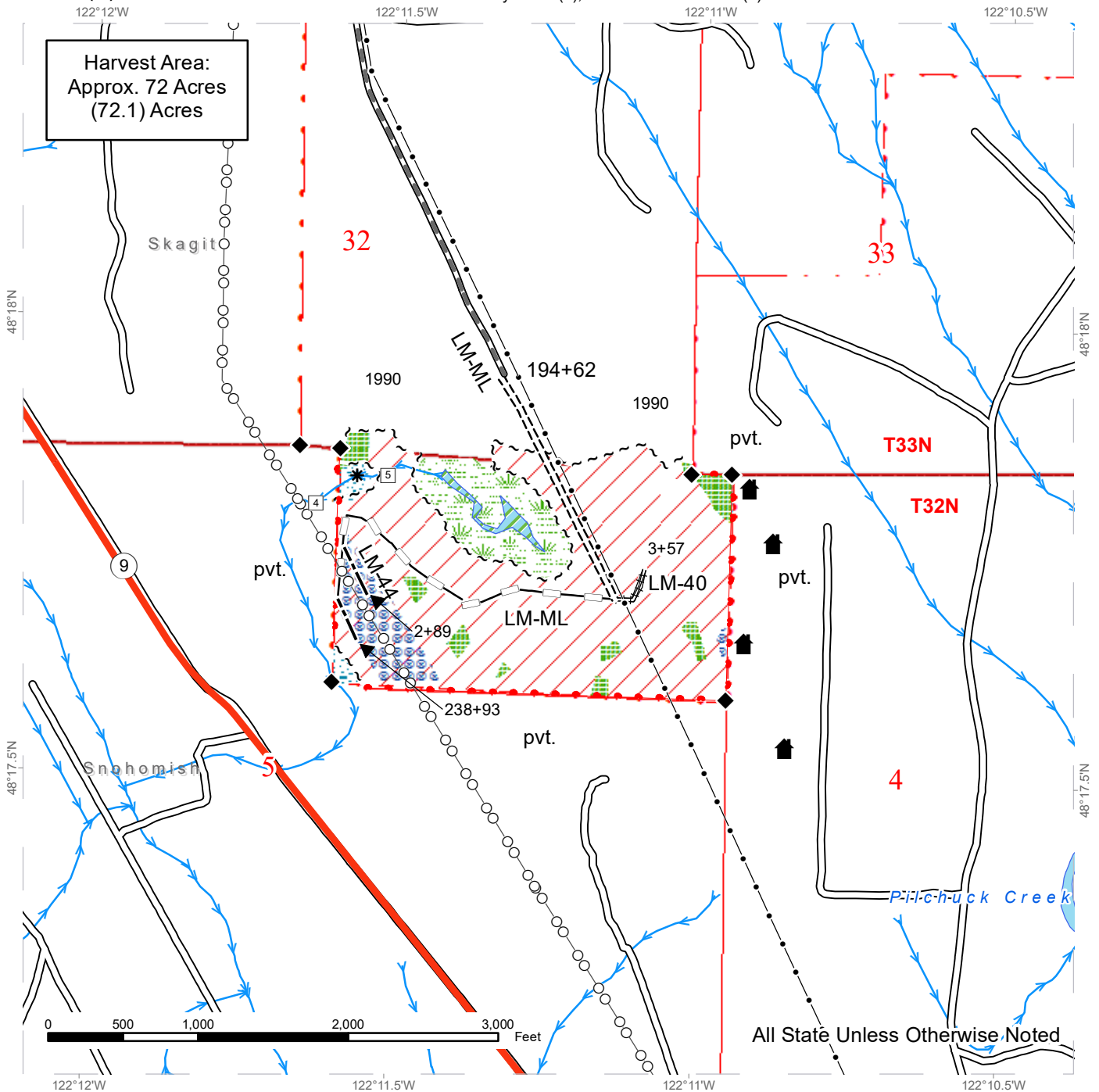
SPECIAL REMARKS:

1. Trees marked with red paint with a yellow “T” represent the last take tree along property line boundaries.
2. Sale layout was intended for ground-based harvesting of sale area.
3. CEDAR SALAVGE: The DNR's standard conversion factor is 600 board feet per cord (cord = 128 cubic feet). Cedar salvage forest products removed on a cord basis will be converted to MBF for payment purposes. No estimate of cedar salvage has been conducted.
4. Utilities are present in the sale area. No operations of any kind are permitted before 8:00 am east of the pipeline right-of-way; No operations of any kind are permitted before 6:00 am west of the pipeline right-of-way.
5. No operations are permitted on weekends or federal holidays.

TIMBER SALE MAP

SALE NAME: SLAPSTICK Hardwood
AGREEMENT #: 30-100487
TOWNSHIP(S): T32R5E
TRUST(S): Charitable/Educational/Penal & Reformatory Instit. (6), State Forest Transfer (1)

REGION: Northwest Region
COUNTY(S): Snohomish, Skagit
ELEVATION RGE: 480-720



All State Unless Otherwise Noted

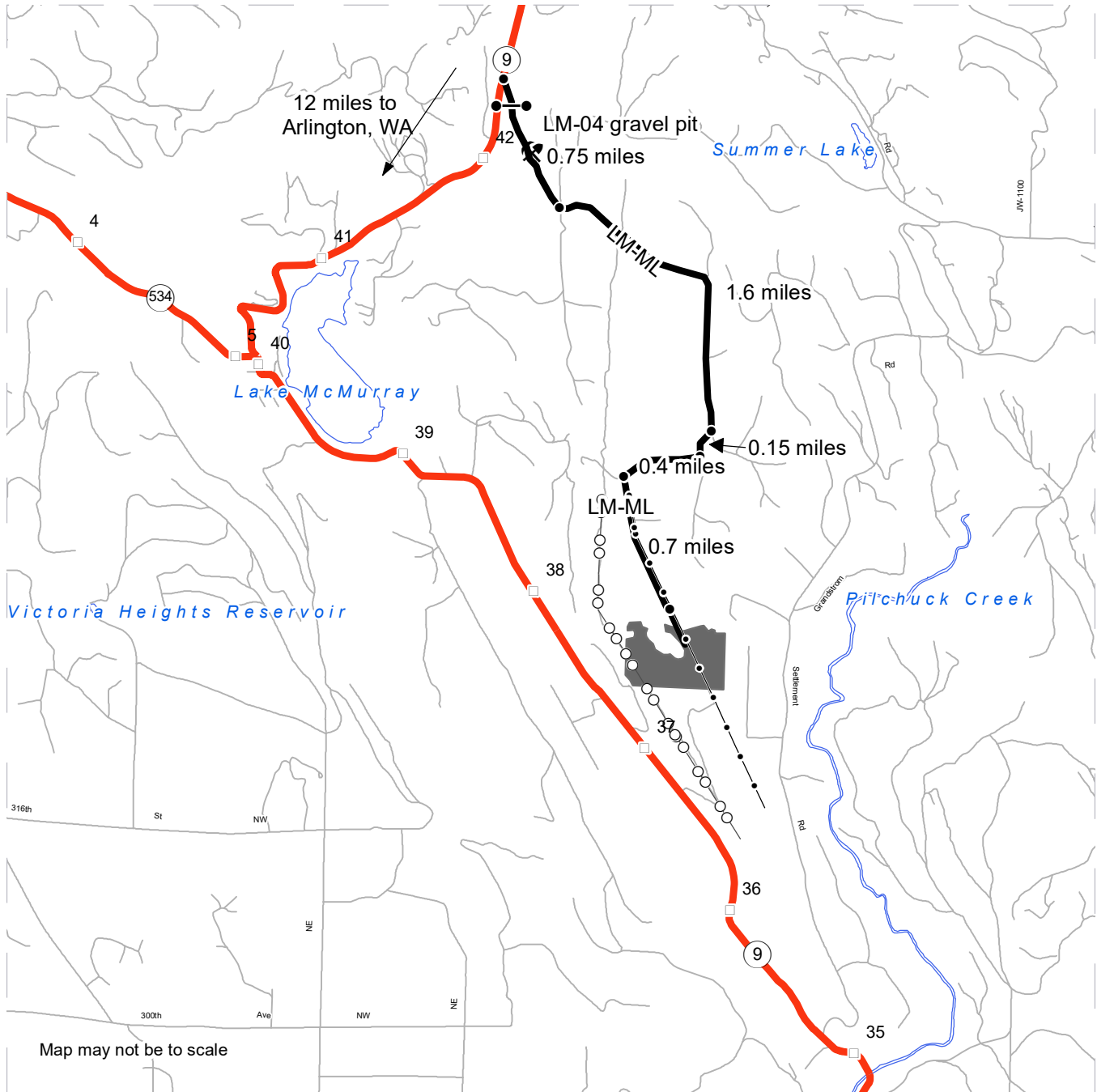
Sale Area	Property Line	Streams
Leave Tree Area	Existing Roads	Stream Type
Riparian Mgt Zone	Required Pre-Haul Maintenance	Stream Type Break
Forested Wetland	Required Construction	Survey Monument
Wetland Mgt Zone	Required Reconstruction	Structure
Hazard Abatement Area	Optional Construction	Pipeline
Sale Boundary Tags	Optional Reconstruction	Power Lines



DRIVING MAP

SALE NAME: SLAPSTICK Hardwood
AGREEMENT#: 30-100487
TOWNSHIP(S): T32R5E
TRUST(S): Charitable/Educational/Penal & Reformatory Instit. (6), State Forest Transfer (1)

REGION: Northwest Region
COUNTY(S): Snohomish, Skagit
ELEVATION RGE: 480-720



- Timber Sale Unit
- Haul Route
- Milepost Markers
- Pipeline
- Power Lines

DRIVING DIRECTIONS:

From Arlington, WA travel north on State Route 9 approximately 12 miles to the Lake McMurray mainline. Turn right onto the mainline and travel 0.75 miles to a 4-way intersection and proceed uphill following the LM-ML for 1.6 miles. At this junction head westward and travel 0.6 miles across the pipeline right-of-way. From here travel 0.7 miles south along the pipeline road until the start of the new road construction and sale area.



**State of Washington
Department of Natural Resources**

SEALED BID FORM

Sale Name _____ Agreement Number _____

_____ hereby submits the following bid for timber.
(Print full, legal company name)

(Street address, City, State, Zip Code)

(Phone Number)

Lump Sum Bid (Not Including Fees) \$ _____ **For Total Sale**

Weight Scale Sale Bid (Not Including Fees) \$ _____ / **Ton**

Scribner Scale Sale Bid (Not Including Fees) \$ _____ / **MBF For Biddable Species**

BID DEPOSIT

Bid Deposit Amount: \$ _____

Bid Deposit Type:

- Cash, certified check, cashiers check, or money order
- Per Sale Bid Bond
- Statewide Bid Bond, Number _____

Within 30 days of confirmation date the successful bidder agrees to furnish Performance Security acceptable to the State in the amount specified on the Notice of Sale. Performance Security must guarantee performance of all provisions of the contract and payment of any damages caused by operations under the contract or resulting from the successful bidders noncompliance with any rule or law.

Bidder's Warranty and Bid Signature

By signing and submitting this bid as an offer to purchase forest products from the State, the Bidder hereby warrants to the State that they have had an opportunity to fully inspect the sale area and the forest products being sold. Bidder further warrants to the State that they enter this bid based upon their own judgments of the value of the forest products, formed after their own examination and inspection of both the timber sale area and the forest products being sold. Bidder also warrants to the State that they enter this bid without any reliance upon the volume estimates, acreage, appraisals, pre-bid documentation, or any other representation by the Washington State Department of Natural Resources.

_____ Date _____
(Signature of Authorized Representative submitting this bid)

(Print name and title of Authorized Representative submitting this bid)

Note: all sales are subject to confirmation by the Commissioner of Public Lands (Refer 79.15.120)

Instructions For Completing Sealed Bid Form

All bids submitted for the purchase of forest products being sold by the Washington State Department of Natural Resources must have an original signature on behalf of the person or entity submitting the bid, and must be on the form provided in this booklet or a photocopy thereof. The DNR will not accept bids that are not signed, and will not accept bids that are not on the current, approved bid form. All appropriate blanks on bid form must be completed including the bid bond number if the bidder is relying upon a bid bond for bid deposit.

For more specific information, contact the appropriate region office.

In-Person Bids

- A. Sealed bids must be in auction box before 10:00 a.m. on the day of auction at the location specified in the Timber Notice of Sale.
 - B. Sealed bids must be submitted in an envelope with the name of the sale, the bidder's name and the contract number clearly written on the outside of the envelope. The full legal name and business address of the bidder must be inserted where indicated on the form, and must be on the bid bond and timber sale contract. The bid form must be signed by an authorized representative. When a bidder has more than one person authorized to bid, documentation of those persons with signature authority for bidding must accompany the bid or be on file at the region office. Sealed bid envelopes are available at all region offices. One bid per envelope.
 - C. Sealed bid envelopes **must** contain a completed bid form and a bid deposit.
 - D. Sealed bid envelopes **may** contain a check for the Initial Deposit amount and a check for fees.
-

Mailed Bids

- A. Bids that are mailed are required to have printed on the outside: "DO NOT OPEN UNTIL SALE DATE. SEALED BID ENCLOSED". The sealed bid envelope(s) will be enclosed inside the mailed-in envelope. Mailed bids must be submitted in an envelope with the name of the sale, the bidder's name and the agreement number clearly written on the outside of the envelope. The full legal name and business address of the bidder must be inserted where indicated on the form, and must be the same on the bid bond and timber sale contract. The Sealed Bid Form must be signed by an authorized representative. When a bidder has more than one person authorized to bid, documentation of those persons with signature authority for bidding must accompany the bid or be on file at the region office. Mail-in envelopes are available at all region offices. One bid per mailed-in envelope.
 - B. Bids that are mailed will be accepted up to 4:30 p.m. the last business day before the auction by the region office in which the sale is located. Bidders assume the risk for the method of delivery. The DNR assumes no responsibility for any delays caused by any delivery service.
 - C. Sealed bid envelopes **must** contain a completed bid form and a bid deposit.
 - D. Sealed bid envelopes **may** contain a check for the Initial Deposit amount and a check for fees.
-

Initial Deposit:

Lump Sum Sales - Initial Deposit must equal 10% of the total bid submitted.
(25% if the bidder is a defaulter as defined under WAC 332-140-300)

Weight Scale Sales - Initial Deposit must equal 10% of the bid per ton multiplied by the total sale estimated tonnage. (25% if the bidder is a defaulter as defined under WAC 332-140-300)

Scribner MBF Scale Sales - Initial Deposit must equal 10% of the bid per MBF multiplied by the total sale MBF. (25% if the bidder is a defaulter as defined under WAC 332-140-300)

**State of Washington
Department of Natural resources**

STATEWIDE BID BOND

Bond Number _____

_____ of _____,
(Principal's Name) (City, State)

hereinafter called PRINCIPAL, and _____ hereinafter called
SURETY,

a corporation organized under the laws of the State of _____, and authorized to transact surety business in the State of Washington, as SURETY, are held and firmly bound jointly and severally to the State of Washington, Department of Natural Resources, hereinafter called the STATE, in the sum of \$150,000.00 Dollars, lawful money of the United States of America. The PRINCIPAL binds itself, its heirs, executors, administrators, successors, and assigns, and the SURETY binds itself, its successors, and assigns, all jointly and severally.

This bond shall be governed by the laws of the State of Washington. In the event of a lawsuit involving this bond, a venue shall be proper only in Thurston County Superior Court.

Signed, sealed and dated this _____ day of _____, _____ .
(month) (year)

This statewide bid bond may be used for bidding between the following dates:

Starting:

Ending:

It Is Hereby Understood and Agreed:

If PRINCIPAL is an apparent high bidder, PRINCIPAL shall before 4:30 p.m ., on day of sale, pay to the STATE the amount of the initial deposit in the form of a certified check, cashier's check, bank draft, cash or money order, then this agreement shall be void for the sale on which the payment is made; otherwise, it will remain in force.

SURETY will make payment to the STATE within ten days after demand by the STATE if the PRINCIPAL shall fail to make timely payment as described above.

The SURETY may cancel this bond by sending a written notice to the STATE, not less than forty-five days before a cancellation date; liability shall terminate as to acts or omissions of the PRINCIPAL that occur after the cancellation date.

The PRINCIPAL and the SURETY executed this bond on the date first mentioned.

Principal: (Above named)

Signature: _____

Name: _____

Title: _____

Address: _____

City: _____
State & Zip Code

Surety: (Above named)

Signature: _____

Name: _____

Title: _____

Address: _____

City: _____
State & Zip Code

Surety: (Local Office of Authorized agent)

Signature: _____

Name: _____

Title: _____

Address: _____

City: _____
State & Zip Code

Notary or Company Seal in Space Above

Instructions for Completing Timber Sale Statewide Bid Bond

- A. This form is authorized for use as bid guaranty to qualify for bidding on Washington State Department of Natural Resources timber sales.
- B. The Statewide Bid Bond may be used as bid guaranty on more than one timber sale.
- C. The full legal name and business address of the PRINCIPAL must be inserted where indicated and must be the same as will appear on the bidding record and timber sale contract. The bond must be signed by an authorized person. Additionally, the name must be typed or printed below the signature and title must be shown.
- D. The full legal name and business address of the SURETY must be inserted where indicated. The bond must be signed by an authorized person. Additionally, the name must be typed or printed below the signature and the title must be shown.
- E. If the SURETY does not have a Washington State office or resident agent, but is authorized to transact surety business in the State of Washington as SURETY, it may leave this signature block blank.
- F. This form must be received by the Department of Natural Resources, Product Sales & Leasing Division, PO BOX 47016, Olympia, Washington, 98504-7016, ten days in advance of the auction.
- G. **The State reserves the right to reject *incomplete or incorrect* bid bond forms, making such forms unacceptable as bid guaranty.**

**State of Washington
Department of Natural Resources**

Timber Sale Per Sale Bid Bond

Bond Number _____

_____ of _____, hereinafter called PRINCIPAL, and _____, hereinafter called SURETY, a corporation organized under the laws of the State of _____ and authorized to transact surety business in the State of Washington, as SURETY, are held and firmly bound jointly and severally to the State of Washington, Department of Natural Resources, hereinafter called the STATE, in the sum of \$ _____ Dollars, lawful money of the United States of America. The PRINCIPAL binds itself, its heirs, executors, administrators, successors, and assigns, and the SURETY binds itself, its successors, and assigns, all jointly and severally.

This bond shall be governed by the laws of the State of Washington. In the event of a lawsuit involving this bond, venue shall be proper only in Thurston County Superior Court.

Signed, sealed, and dated this _____ day of _____, 20 _____.

BID IDENTIFICATION:

SALES NAME(S)	REQUIRED DEPOSIT	AGREEMENT NUMBER(S)

DATE OF BID: _____

It Is Hereby Understood and Agreed:

If PRINCIPAL is the high bidder on the sale(s) identified above and, within ten (10) days of the day of sale, transmits cash, certified check, cashier's check, bank draft or money order, payable to the STATE, in the amount of the bid guaranty required by the terms of the Notice of Sale, *then* this obligation shall be void; *otherwise*, it shall remain in force.

SURETY will make payment to the STATE within ten (10) days after demand by the STATE whenever the PRINCIPAL shall fail to make timely payment as described above.

IN WITNESS WHEREOF: the PRINCIPAL and the SURETY have caused this bond to be executed on the date first mentioned.

SECOND OFFICER:

Signature: _____

Name: _____

Title: _____

PRINCIPAL: (Above Named)

Signature: _____

Name: _____

Title: _____

SURETY: (Local Office of Authorized Agent)

Signature: _____

Name: _____

Title: _____

Address: _____

City: _____

State & Zip: _____

SURETY: (Above Named)

Signature: _____

Name: _____

Title: _____

Address: _____

City: _____

State & Zip _____

NOTARY OR COMPANY SEAL IN THE SPACE ABOVE

Instructions for Completing Timber Sale Per Sale(s) Bid Bond

- A. This form is authorized for use as bid guaranty to qualify for bidding on Washington State Department of Natural Resources timber sales.
- B. The Timber Sale Per Sale Bid Bond may be used as bid guaranty on more than one timber sale auction held the same date at the same location.
- C. The full legal name and business address of the PRINCIPAL must be the same as will appear on the bidding record and timber sale contract. The bond must be signed by an authorized person, the name typed or printed, and title shown. If PRINCIPAL is a corporation, a second officer must sign in the space to the left of the signature of the officer executing for the PRINCIPAL.
- D. The full legal name and business address of the SURETY must be inserted where indicated. The bond must be signed by an authorized person. Additionally, the name must be typed or printed below the signature and the title must be shown. If this person is not an officer of the corporation, evidence of authority must be submitted.
- E. If the SURETY does not have a Washington State office or resident agent, but is authorized to transact surety business in the State of Washington as Surety, it may leave the local office signature block blank.
- F. The date of the bid bond must not be later than the auction date.
- G. **The State reserves the right to reject incomplete or *incorrect* bid bond forms, making such forms unacceptable as guaranty.**

STATE OF WASHINGTON
DEPARTMENT OF NATURAL RESOURCES

LOG SORT SEALED BID FORM

Sale Name _____ Agreement Number _____ Date _____

_____ hereby submits the following bid for delivered logs.
(Print Company Name)

_____ Telephone Number _____
(Print Name Authorized Company Representative) (Contact for bid result notification)

(Street Address)

(City, State and Zip)

Agreement Number	Sort Number	<u>Delivered Logs Bid Amount</u> (fill in one only)	
		\$ /MBF	\$ /TON

Bid Deposit Amount \$ _____

- Bid Deposit Type:**
- Cash, Certified Check, Cashiers Check, or Money Order
 - Per Sale Bid Bond
 - Statewide Bid Bond, Number _____

The successful bidder agrees to furnish payment security acceptable to the State in the amount as described in clause P-041 of the Purchaser's contract prior to log delivery and at a date to be determined by the State.

Bidder's Warranty and Bid Signature

By signing and submitting this bid as offer to purchase forest products from the State, the Bidder hereby warrants to the State that they have had an opportunity to fully inspect the sale area and the forest products being sold. Bidder further warrants to the State that they enter this bid based solely upon their own judgment of the value of the forest products, formed after their own examination and inspection of both the timber sale area and the forest products being sold. Bidder also warrants to the State that they enter this bid without any reliance upon the volume estimates, acreage estimates, appraisals, pre-bid documentation, or any other representation by the State Department of Natural Resources.

(Signature of Authorized Representative submitting this bid)

(Date of Signature)

(Print name and title of Authorized Representative submitting this bid)

NOTES: A separate bid form is required for each log sort bid and must be delivered in a separate envelope. Photocopies of this bid form may be used. Each photocopy must have original signatures. Final contract award is contingent upon the State's haul cost analysis. Actual haul route may vary and is subject to change at the State's discretion. All sales are subject to confirmation by the Commissioner of Public Lands as per RCW 79.15.100.

LOG SORT SEALED BID SUPPLEMENTAL INFORMATION FORM

(Print Company Name)

(Sale Name)

(Agreement Number)

(Sort Number)

(email: optional for DNR production report distribution)

Log Manufacturing Specifications:

Sawlog and Peeler sorts: Enter at least one preferred log length including trim for each log length range below.

Pole sorts (Distribution): Enter three or more lengths. Attach preferred manufacturing information.

Pole sorts (Transmission): Enter six or more lengths. Attach preferred manufacturing information.

Tonnage sorts: See bid form instructions for required log lengths. Enter additional custom lengths as desired.

Log Length Ranges	Bidder's Preferred Log Lengths
16 ft. through 20 ft.	
22 ft. through 30 ft.	
32 ft. through 40 ft.	
Distribution Poles – 35 ft. through 55 ft.	
Transmission Poles – 60 ft.+	

Log Delivery Information:

1) Designate the point of delivery and address (must be a street address)

(Location Name)

(Street Address)

(City, State and Zip)

2) Designate the state approved Scaling and Weighing facilities closest to the point of delivery as needed.

Scaling Location Information

Weighing Location Information

(Scaling Location Name)

(Weighing Location Name)

(Third Party Scaling Organization)

(Weighing Location Owner)

(Scaling Location Street Address)

(Weighing Location Street Address)

(Scaling Location City, State and Zip)

(Weighing Location City, State and Zip)

Final contract award is contingent upon the State's haul cost analysis. Actual haul route may vary and is subject to change at the State's discretion. Additional terms or conditions requested by the bidder on or attached to the Log Sort Sealed Bid or Supplemental Information Forms are informational only and non-binding.

Instructions for Completing the Log Sort Sealed Bid and Supplemental Information Forms.

All bids submitted for the purchase of forest products being sold by the Washington State Department of Natural Resources must have an original signature on behalf of the person or entity submitting the bid, and must be on the form(s) provided in this booklet or a photocopy thereof. The DNR will not accept bids that are not signed, and will not accept bids that are not on the current, approved bid form. All appropriate blanks including Agreement Number, Sort Number, Bid amount (per mbf or ton as appropriate for the sort), Bid deposit amount and type. Signatures and date on bid form must be completed including the bid bond number if bidder is relying upon a bid bond for bid deposit.

Bids shall not be accepted if a completed '**Log Sort Sealed Bid Supplemental Information Form**' is not included with the approved '**Log Sort Sealed Bid Form**'.

Required log lengths for tonnage sorts: Preferred log lengths for tonnage sawlog sorts shall include the following plus any additional lengths identified on the Bid Supplemental Information form:

Species Type	Preferred Lengths
Conifer Sorts	16', 20', 24', 26', 32', 40'
Hardwood Sorts	18', 20', 26', 28', 30', 36', 38', 40'

For more specific information, contact the appropriate region office.

In-Person Bids

- A. Sealed bids must be in auction box or auction envelope before 10:00 a.m. on the day of sale at the location specified in the notice of sale.
- B. Sealed bids must be submitted in an envelope with the name of the sale, the bidder's name and the contract agreement number clearly written on the outside of the envelope. The full legal name and business address of the bidder must be inserted where indicated on the form, and must be the same as the name on the bid bond and timber sale contract. The bid form must be signed by an authorized person. When a bidder has more than one person authorized to bid, then documentation of those persons with signature authority for bidding must accompany the bid or be on file at the region office. Sealed bid envelopes are available at all region offices. One bid per envelope.
- C. Sealed bid envelopes must contain the following:
 1. A completed '**Log Sort Sealed Bid Form**';
 2. A completed '**Supplemental Information Form**' and;
 3. A bid deposit

Mailed Bids

- A. Mail-in bid envelopes are required to have printed on the outside: "DO NOT OPEN UNTIL SALE DATE. SEALED BID ENCLOSED." The sealed bid envelope(s) will be enclosed inside the mailed-in envelope. Mailed bids must be submitted in an envelope with the name of the sale, the bidder's name and the agreement number clearly written on the outside of the envelope. The full legal name and business address of the bidder must be inserted where indicated on the form, and must be the same on the bid bond and timber sale contract. The bid form must be signed by an authorized person. When a bidder has more than one person authorized to bid, then documentation of those persons with signature authority for bidding must accompany the bid or be on file at the region office. Mail-in envelopes are available at all region offices. One bid per mailed-in envelope.
- B. Mail-in or otherwise delivered bids will be accepted up to 4:30 p.m. the last business day before the auction by the region office in which the sale is located. Bidders assume the risk for the method of delivery they chose. The DNR assumes no responsibility for any delays caused by any delivery service.
- C. Sealed bid envelopes must contain the following:
 1. A completed '**Log Sort Sealed Bid Form**';
 2. A completed '**Log Sort Sealed Bid Supplemental Information Form**' and;
 3. A bid deposit

Department of Natural Resources Region Offices

Olympia Headquarters
 1111 Washington St SE
 MS 47000
 Olympia, WA 98504-7000
 (360) 902-1000
www.dnr.wa.gov

Product Sales & Leasing Division

1111 Washington St SE
 MS 47014
 Olympia, WA 98504-7014
 (360) 902-1600

South Puget Sound Region

950 Fairman Ave N
 Enumclaw, WA 98022-9282
 (360) 825-1631

Pacific Cascade Region

601 Bond Road
 PO Box 280
 Castle Rock, WA 98611-0280
 (360) 577-2025

Southeast Region

713 Bowers Road
 Ellensburg, WA 98926-9301
 (509) 925-8510

Northwest Region

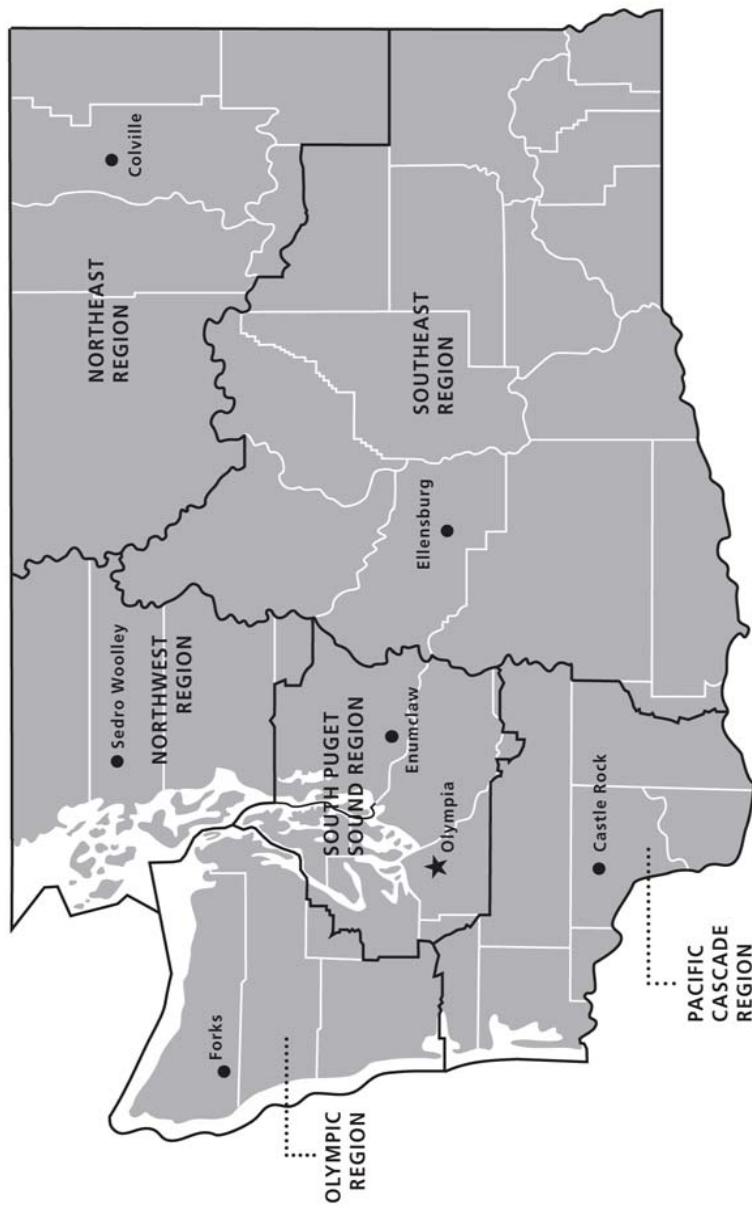
919 N Township St
 Sedro Woolley,
 WA 98284-9384
 (360) 856-3500

Olympic Region





411 Tillicum Lane
 Forks, WA 98331-9271
 (360) 374-2800

Northeast Region

225 S Silke Road
 PO Box 190
 Colville, WA 99114-0190
 (509) 684-7474



DNR REGIONS

-  DNR Region Boundaries
-  County Boundaries
-  DNR Region Office
-  Olympia Headquarters



WASHINGTON STATE DEPT OF
NATURAL RESOURCES



For more information about how public lands are managed visit DNR's web page at www.dnr.wa.gov

Fire, Burn Ban Information and Region Offices
 Toll Free: 1-800-527-3305 General TTY: 7-1-1



PRINTED ON RECYCLED PAPER. DNR COMMUNICATIONS, MARCH 2013.



WASHINGTON STATE DEPT OF
**NATURAL
RESOURCES**

1111 WASHINGTON ST SE
MS 47014
OLYMPIA WA 98504-7014

www.dnr.wa.gov

For alternate formats
of this document,
Call (360) 902-1000
TRS: 7-1-1

PRINTED IN THE USA ON RECYCLED PAPER

