

## FREQUENTLY ASKED QUESTIONS

### Do I need to understand GIS?

Although Geographic Information System (GIS) experience would be nice, you do not need to be a GIS professional to use the Portal.

### What can I use the Portal for?

Interactive maps have two advantages over paper maps—they access the most current information and allow users to manipulate the data.

### Can I use the Portal on my mobile device?

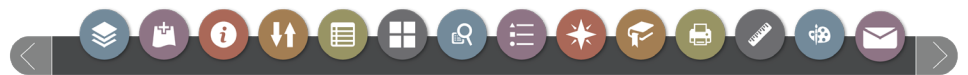
Yes! The Portal will now work on tablets and smartphones. For a more streamlined smartphone experience, consider using our simplified mobile app (<http://www.dnr.wa.gov/mobilegeology>).

### How can it improve my bottom line?

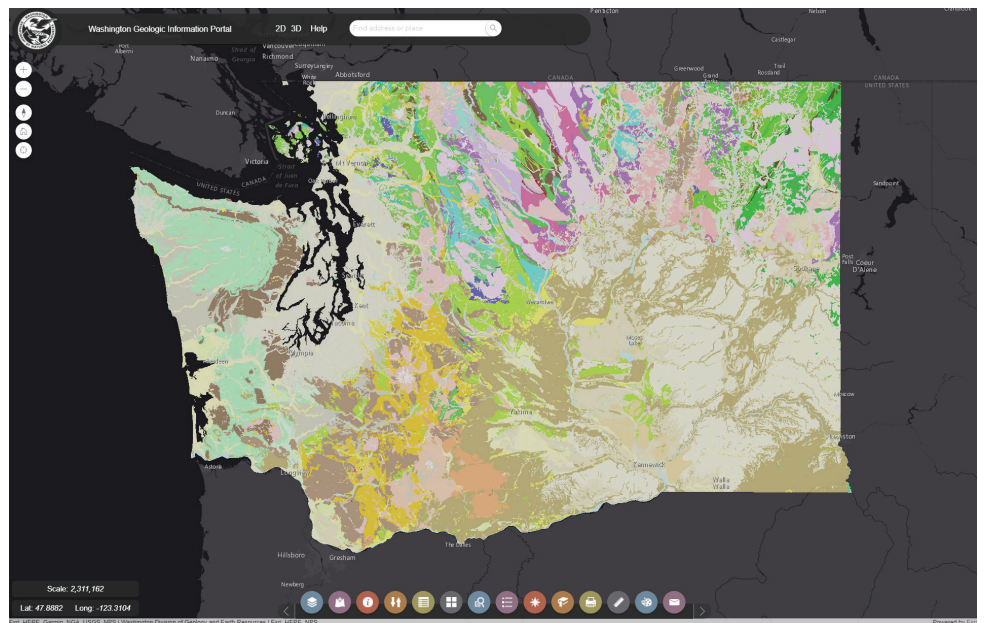
It can improve your efficiency and save you money by enabling you to find the information you need faster and without having to hire outside help. There is a vast amount of data available at your fingertips. What took hours or weeks to find before is now available in minutes.

## OUR VISION

**Fostering a safer, more productive and resilient society that incorporates geology into its regular thought and decision-making processes**



# The Washington State Geologic Information Portal



Access the Geologic Information Portal at [www.dnr.wa.gov/geologyportal](http://www.dnr.wa.gov/geologyportal).

## What the Portal Can Do

This application puts complex geologic and hazards information into the hands of everyone—citizens and community decision-makers as well as scientists and technical professionals—allowing them to quickly compare and synthesize data of different types (geology, hazards, resources, base maps) to help solve a variety of problems.

- create custom geoscience maps for online display
- find out more about individual map features
- download the corresponding geospatial data
- make informed decisions on issues such as the environment, natural resource protection and exploration, land use, and public safety

[www.dnr.wa.gov/geologyportal](http://www.dnr.wa.gov/geologyportal)

**LOTS OF DATA:**

- Geologic mapping
- Landslides
- Earthquake locations and depths
- Active fault and fold locations
- Liquefaction susceptibility mapping
- Seismic site class and seismic design category mapping
- Geophysical data
- Seismic Scenario Catalog
- Tsunami inundation and evacuation
- Susbsurface borehole data
- Geothermal resources
- Active surface mines
- Oil and gas exploration wells
- Base layers, including lidar

**FUNCTIONALITY:**

- Print your map
- Save your project
- Draw and measure
- Add your own data
- Query the data
- View attribute tables
- Reorder map layers
- Print landslide inventory maps
- Download GIS data
- Filter layers by keyword
- 3D terrain view
- Address search

## New and Improved

We've added lots of new functionality and improved many of the tools on the Portal



**VIEW LAYER ATTRIBUTES**



**ADD YOUR OWN DATA**



**PRINT CUSTOM MAPS**



**QUERY THE DATA**



**CHANGE BASEMAPS**



**DRAW AND ANNOTATE**



**ZOOM TO A LOCATION**



**REORDER LAYERS**



**MEASURE FEATURES**



**IDENTIFY FEATURES**



**SAVE/SHARE PROJECTS**



**CONTROL MAP CONTENT**

## Portal Help

We have created a handy website primer to help with portal navigation and tools.

[www.dnr.wa.gov/portal-help](http://www.dnr.wa.gov/portal-help)

## Contact Us

Troubles with using the Portal? Ask via email:

[susan.schnur@dnr.wa.gov](mailto:susan.schnur@dnr.wa.gov)

Give us feedback through a short survey!

<https://www.surveymonkey.com/r/WGSportal>

## GEOLOGY IN THE PUBLIC INTEREST



WASHINGTON STATE DEPT OF  
**NATURAL RESOURCES**  
WASHINGTON  
GEOLOGICAL SURVEY

### OUR MISSION

To collect, develop, use, distribute, and preserve geologic information to promote the safety, health, and welfare of the citizens of Washington, protect the environment, and support its economy.