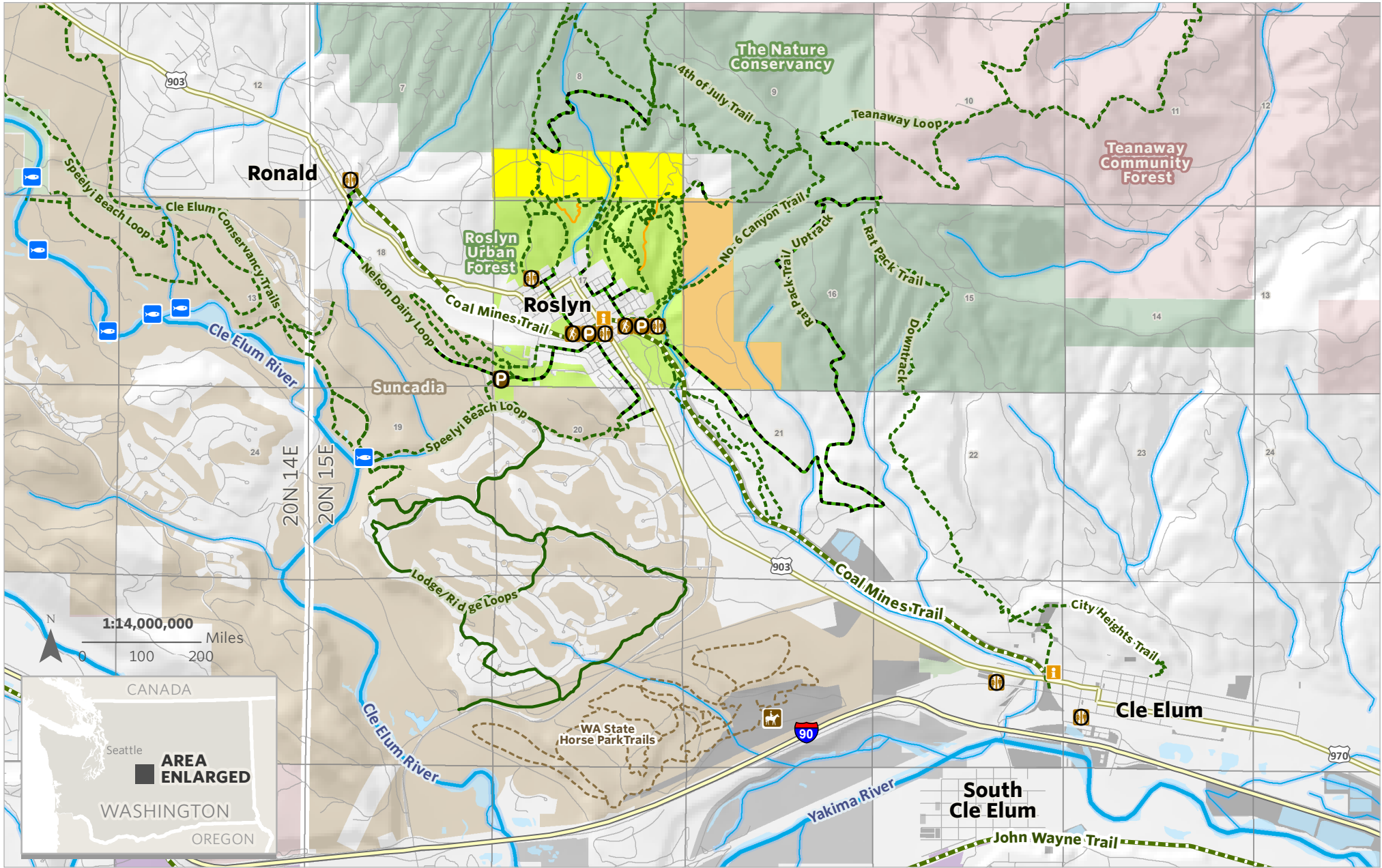




TOWN TO TEANAWAY: REGIONAL TRAILS SYSTEM









MAP LEGEND

-  Town to Teanaway - Acquisition
-  Town to Teanaway - Future Acquisition

TRAILS & POINTS OF INTEREST

-  Dirt Trail
-  Gravel Trail
-  Paved Trail
-  Trail Follows Road
-  Equestrian Trail
-  To be Decommissioned

-  Trailhead
-  Parking
-  Restroom
-  Horse Park

-  Information
-  Salmon Facility

LAND OWNERSHIP

-  Roslyn Urban Forest
-  The Nature Conservancy
-  Suncadia Resort
-  WA Dept. of Natural Resources

May 24, 2016

Town to Teanaway proposal focuses on the acquisition of 160 acres of privately owned land that separates the City of Roslyn's Urban Forest (RUF) from thousands of miles of trails on surrounding public lands. Connecting trails through RUF to the Teanaway Community Forest, Wenatchee National Forest, and the Alpine Lakes Wilderness will allow the City of Roslyn to become a partner in the trail network that extends all the way to Leavenworth on public lands. We are all aware of the significant social and economic benefits of trails; this proposed acquisition supports connecting multiple regional trails, increasing public access to public lands and gives the City of Roslyn an opportunity to engage a broader community in experiencing Central Washington in a way that has not before been available.

Town to Teanaway also builds upon the vision to create recreational connectivity between the communities of Roslyn, Cle Elum, Ronald, and the Suncadia Master Planned Resort. Currently the eight 20-acre parcels that included for acquisition in this proposal are in private ownership. The interruption in public ownership disconnects Roslyn's trail network and surrounding trail systems including the Coal Mines Trail, Suncadia trail system, Washington State Horse Park trails, and the John Wayne Trail, from the regional trail systems found on The Nature Conservancy lands and in the Teanaway Community Forest.