



# Annual Review of State Trust Lands Management Fiscal Year 2016

July 1, 2015 – June 30 2016

**A Report to the Board of Natural Resources**

**Angus Brodie & Darin Cramer**  
**December 2016**



# Trust Lands Topics

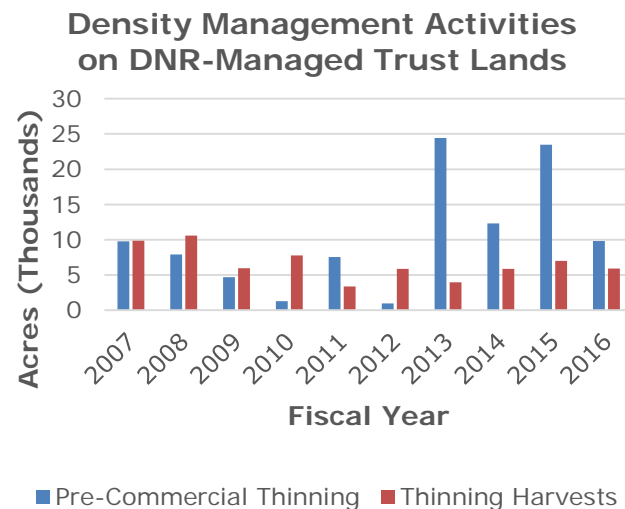
## Fiscal Year 2016

- Aspects of Forest Management
  - Investing in Forest Stands
  - Technology Investments
  - Volume Sold/Value Earned
  - Roads
- Leasing
- Transactions



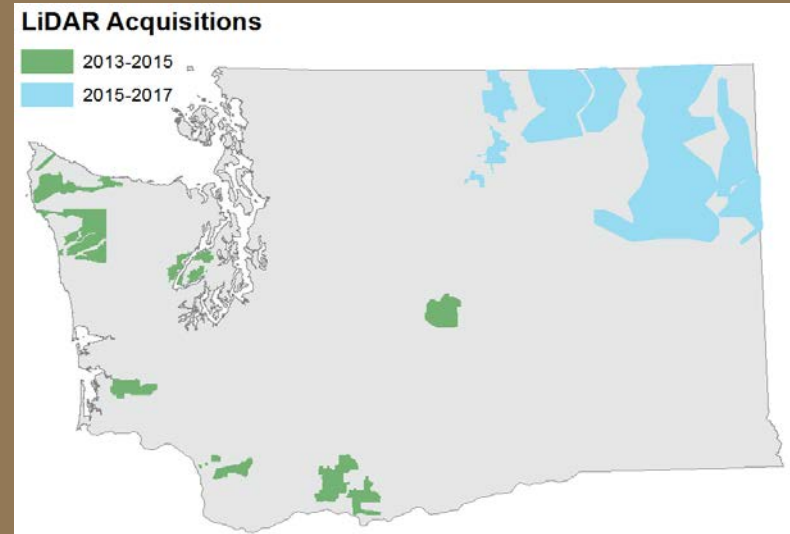
# Investing in Forest Stands

- Seed and Seedling Production:
  - Woods-run collection was 285 bushels
  - Seed orchard production 349 bushels
  - Shipped 5.4 million seedlings for reforesting state trust lands
- Forest Establishment:
  - Approximately 17,000 acres planted
  - 98 percent of regeneration harvests were hand planted
- Forest Stand Tending:
  - 23,000 acres treated for weeds
  - 10,000 acres pre-commercially thinned
  - 6,000 acres commercially thinned



# Research & Technology Investments

- Remote sensed forest inventory
  - Acquired 500,000 acres of LiDAR and measured 1,100 field plots
  - Current coverage 98% of all DNR-managed forest lands
- In progress
  - Replacing 20-year database for planning and tracking forest management activities
  - Silviculture research on post-wildfire replanting
  - Mobile development-staying relevant with a modern workforce
  - ESRI story maps- helping stakeholders understand our work through the power of data



WASHINGTON STATE DEPARTMENT OF  
**NATURAL RESOURCES**

and



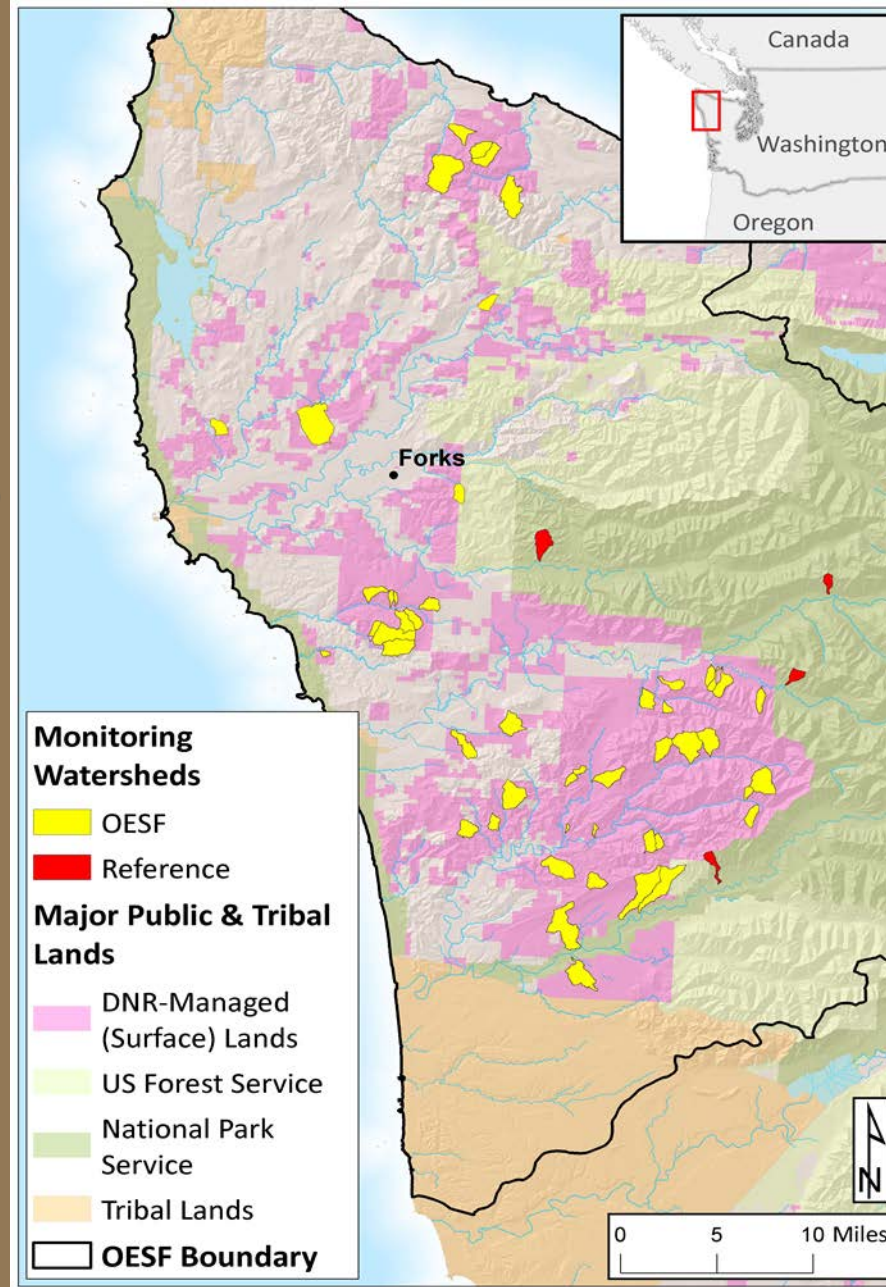
U.S. Fish & Wildlife Service

Welcome to the  
Marbled Murrelet Long-Term  
Conservation Strategy  
Story Map

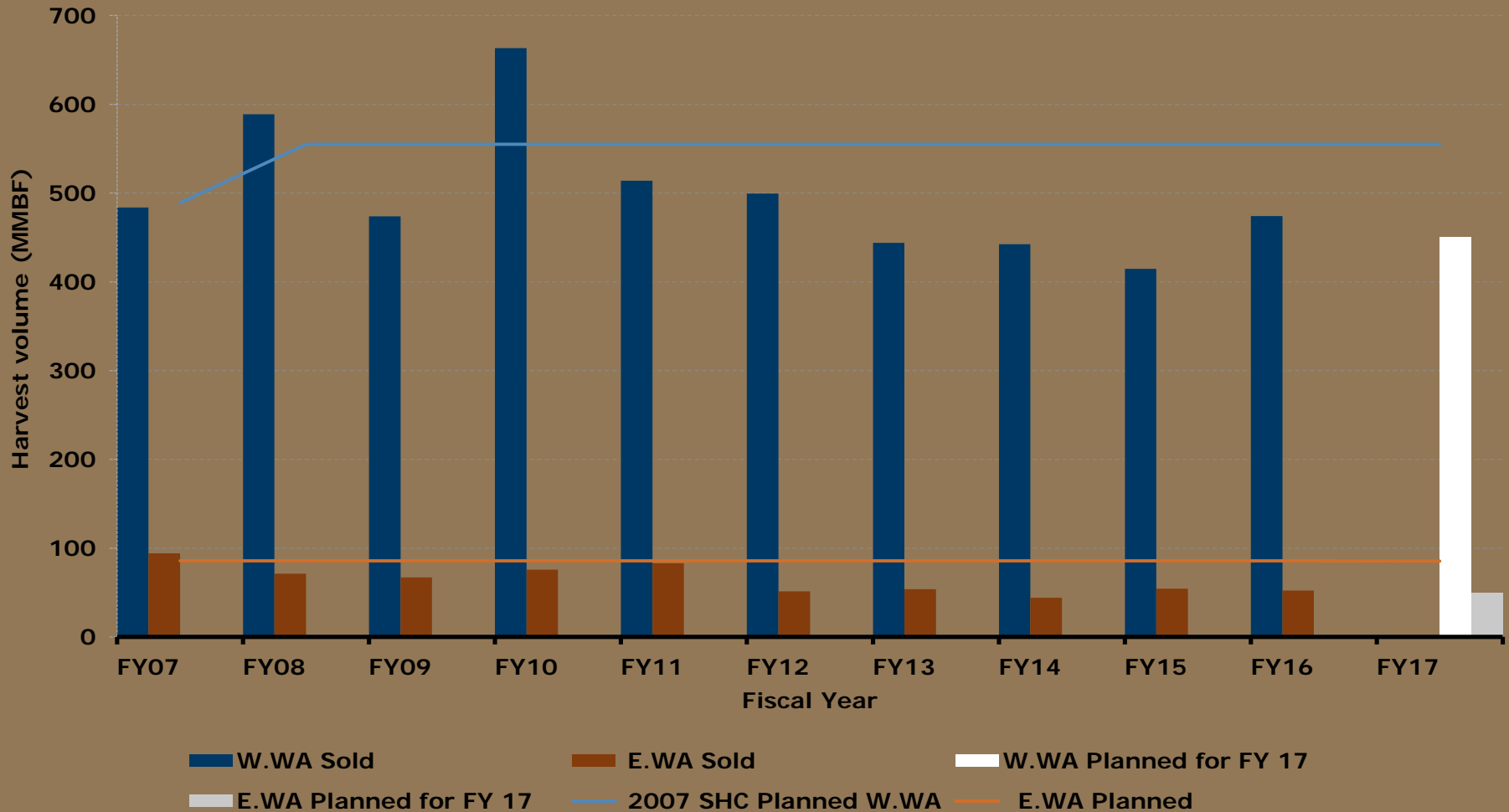


# Research and Monitoring

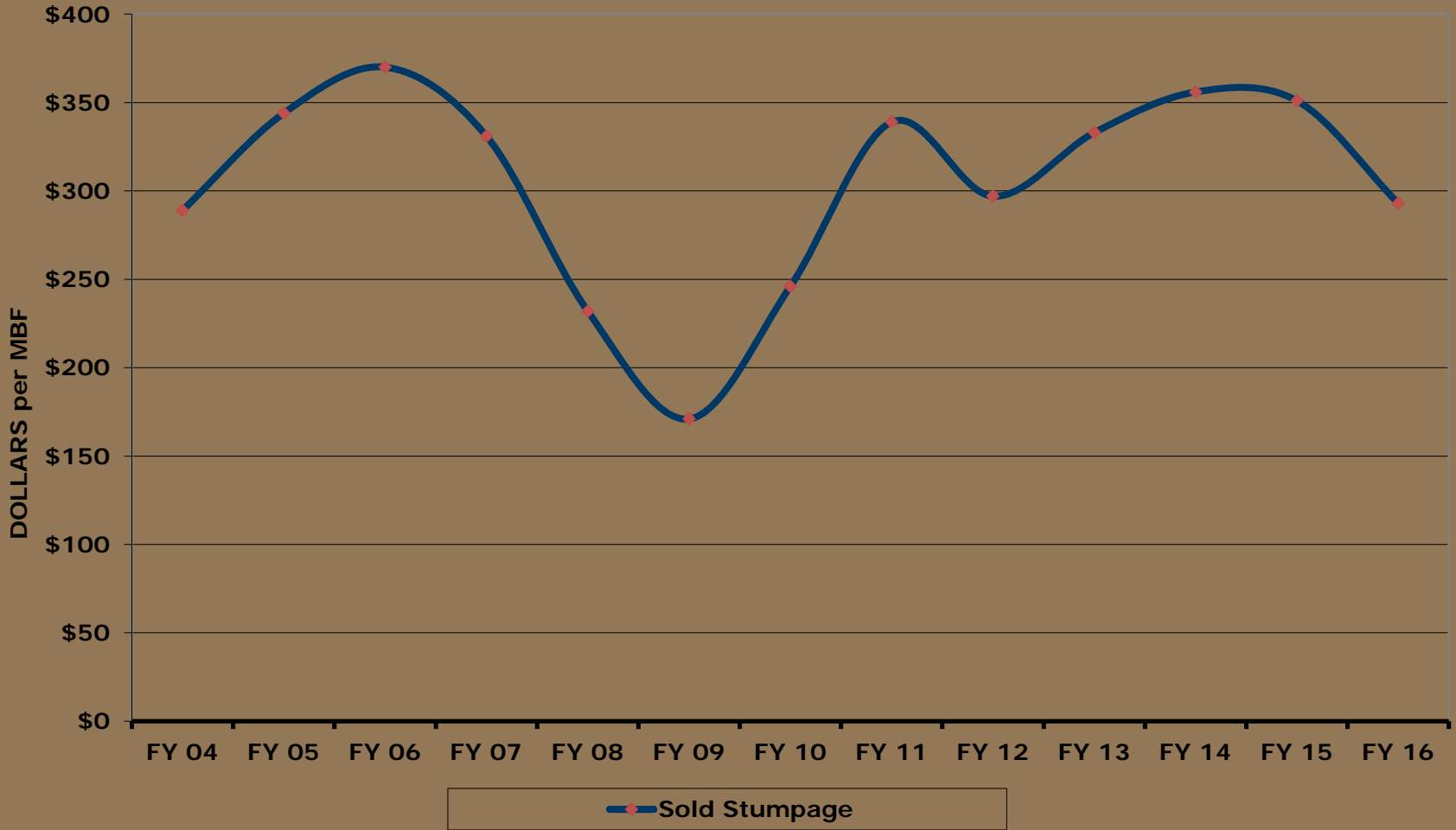
- Monitoring
  - Young stand performance
  - Habitat Conservation Plan (HCP) Implementation
  - HCP Effectiveness
    - Northern Spotted Owl
    - Riparian
  - HCP Validation
    - Salmon in the OESF
- Key Research
  - Silviculture
  - Gap dynamics



# Timber Volume Sold FY07 - FY16 Sold Sales



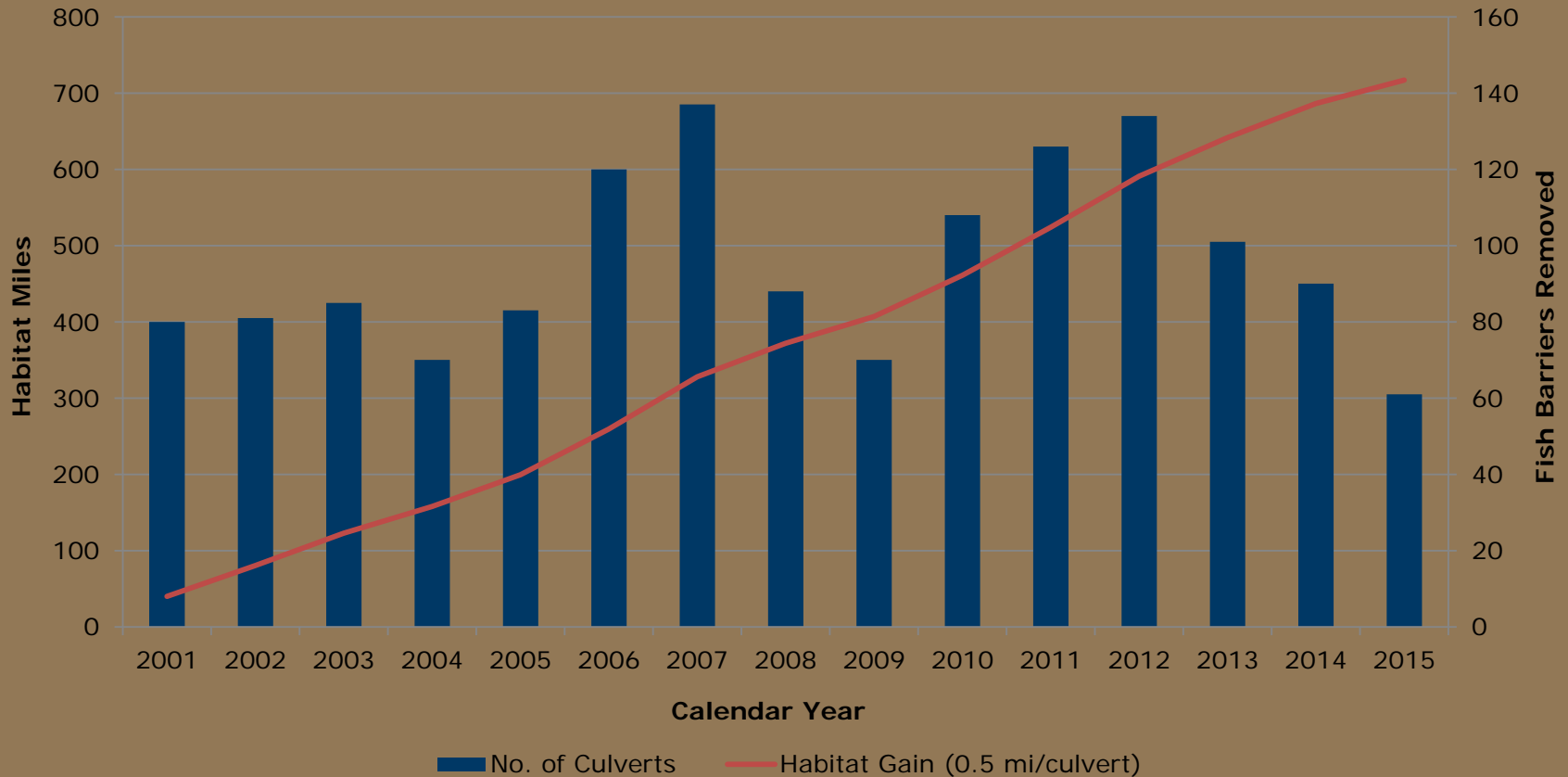
# Stumpage Sales Values FY04-FY16





# RMAPS: Fish Passage Culverts

Number of projects completed per year  
Potential linear habitat gain in miles (cumulative)



# RMAPS: Example

After



Before



Iron Maiden Bridge  
Tributary to the Hoh River



# Total Timber & Leasing Revenue Earned Fiscal Year 2016

Fiscal Year 2016 – Dollars in Millions	
Leasing	\$41.4
Timber	\$164.7
Total Revenue	\$206.1

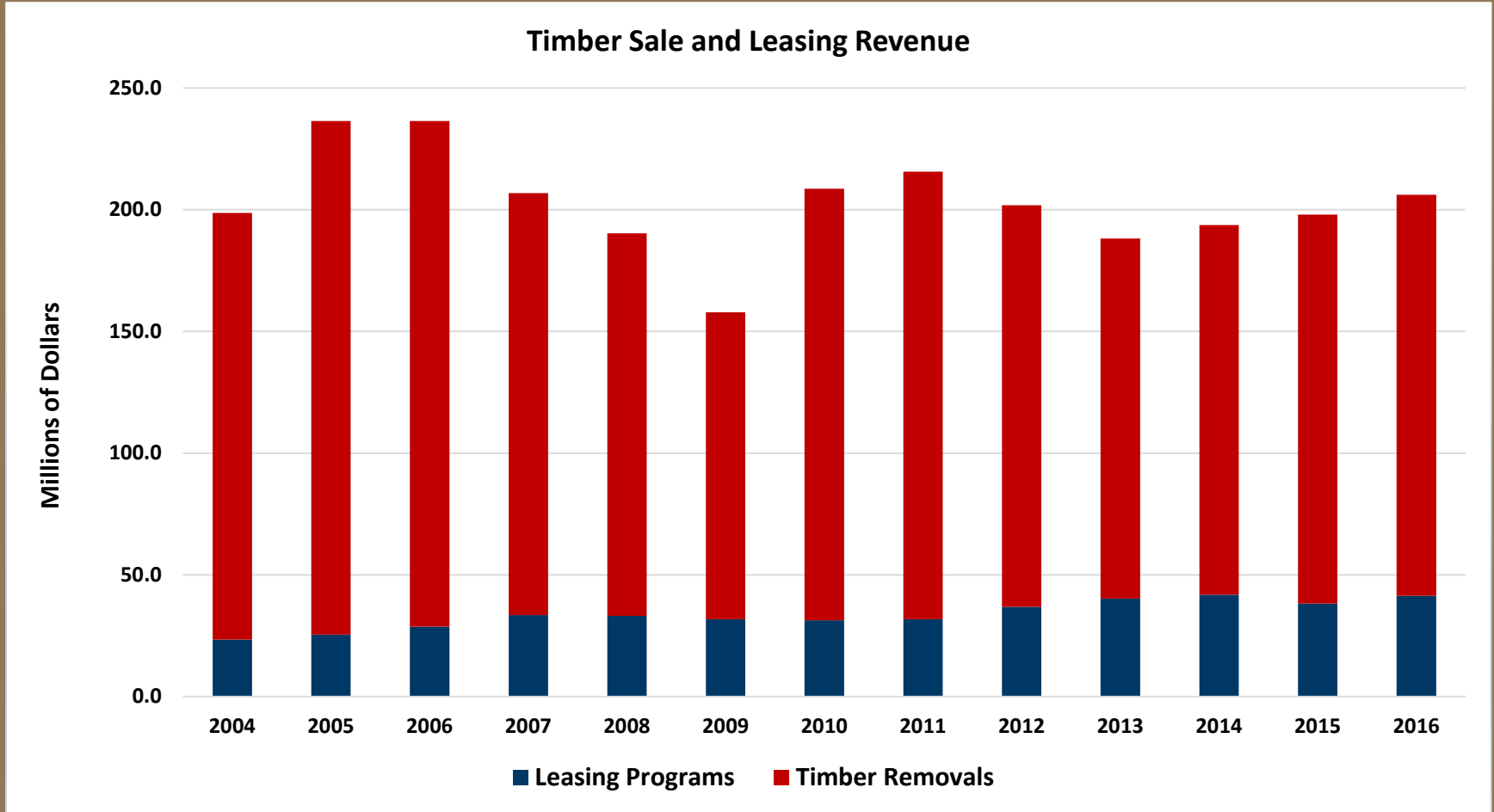


# Leasing Program Revenue

Fiscal Year 2016	
Agricultural Leases	\$21,308,740
Grazing	\$1,061,646
Commercial Real Estate	\$8,958,009
Special Forest Products	\$587,375
Property Leases	\$1,997,102
Communication Sites	\$4,488,305
Minerals, Oil, & Gas	\$27,065
Rock, Sand, & Gravel	\$2,183,217
Rights of Way	\$808,827
Miscellaneous Revenue	\$178,536
<b>Leasing Total</b>	<b>\$41,420,286</b>



# Total Timber & Leasing Revenue 2004 - 2016



# Trust Land Investments Results to Date

- Acquired five legal access agreements to DNR land across other landowners, and granted eight access agreements across DNR land
- Completed planning for 10 remaining federal injunction fish passage barrier culverts on the Olympic Peninsula before the October 2016 deadline



# Trust Land Investments Results to Date

- Ag – Pasco Kahlotus Road Purchase, highly productive irrigated farm land with water rights as key value.
- Ag – Implement new method to adjust cash rent for irrigated leases.
- Ag- Grazing lease, cooperative monitoring photo points implemented.



# Transactions Highlights

## Fiscal Year 2016

### Trust Acquisitions:

- 1770 acres of forest land

### Conservation and Local Government Dispositions: 528 acres

- DNR NRCAs, 90 acres
- Parks and Open Space, 353 acres
- Schools and Local Government Facilities, 85 acres

