

Public Auction

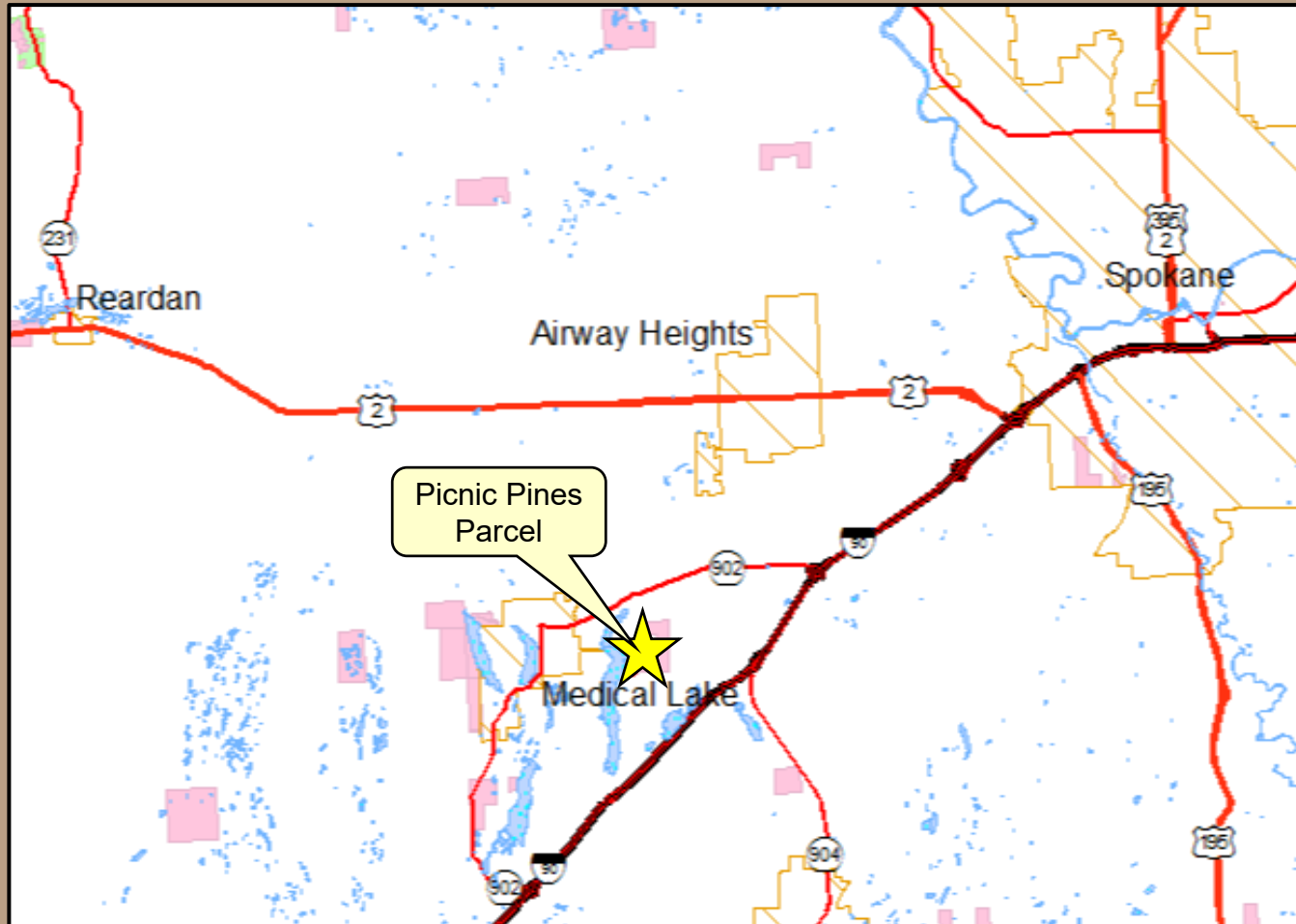
Picnic Pines

Spokane County



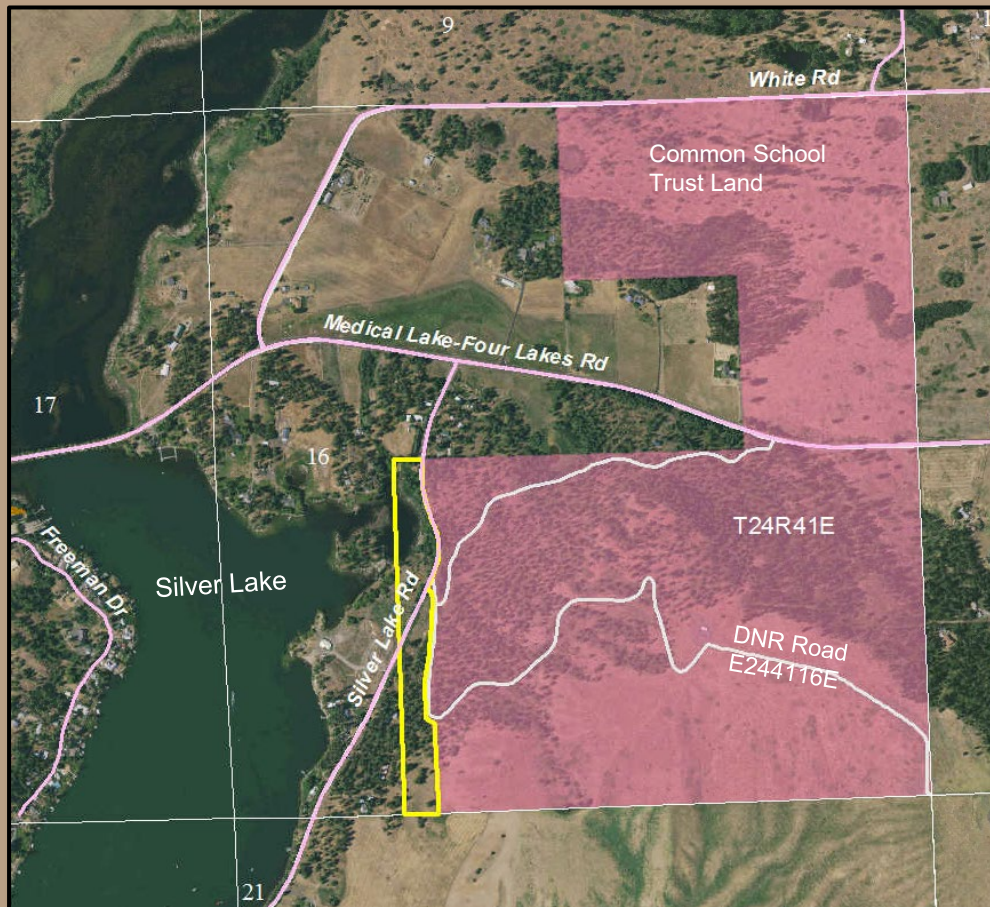
Picnic Pines Auction

Vicinity Map

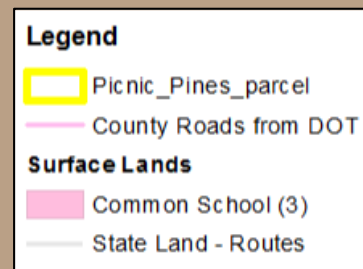


Picnic Pines Auction

Parcel Information

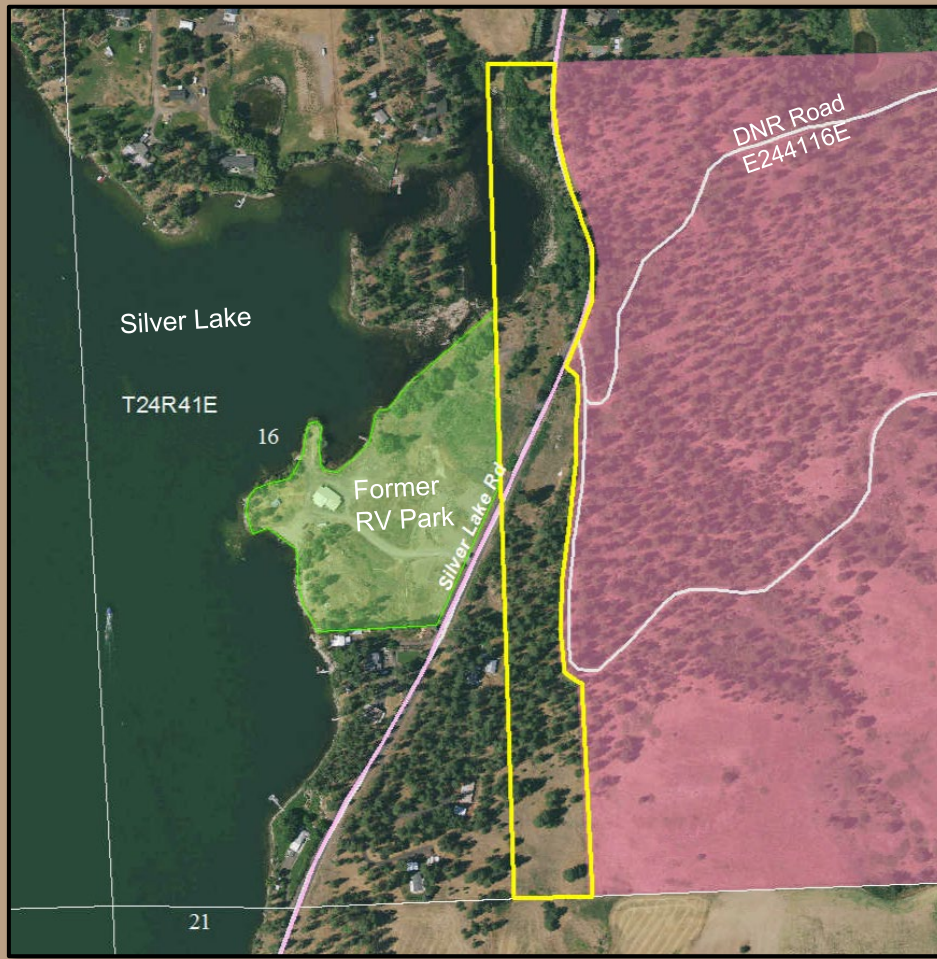


- 13.1 acres
- County Road Access
- Zoning:
 - Rural Transitional
 - Low Density Residential
- 1 DU/10 acres
- Land Bank property

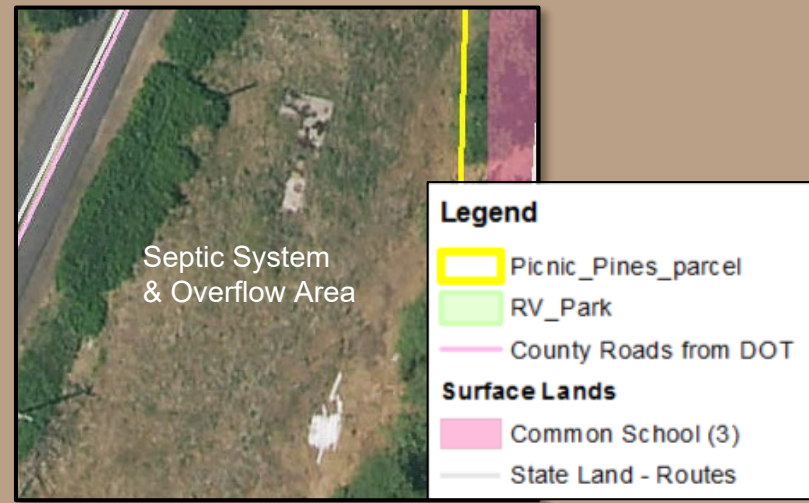


Picnic Pines Auction

Ortho Map



- Former lease for septic & drain field.
- No City Water
- Old septic system inactive



Picnic Pines Auction

Valuation

| Land Assets | Appraised Value Recommended Minimum Bid |
|-----------------------|--|
| Picnic Pines Property | \$120,000 |



Picnic Pines Auction

Auction

- Public Auction - Written sealed bids will be opened at DNR's Deer Park Work Center, located north of Spokane
- Auction revenue to Land Bank, to be used to acquire replacement lands for future trust management.



Picnic Pines Auction

Questions ?

Approval requested for:

Resolution No. 1594

