

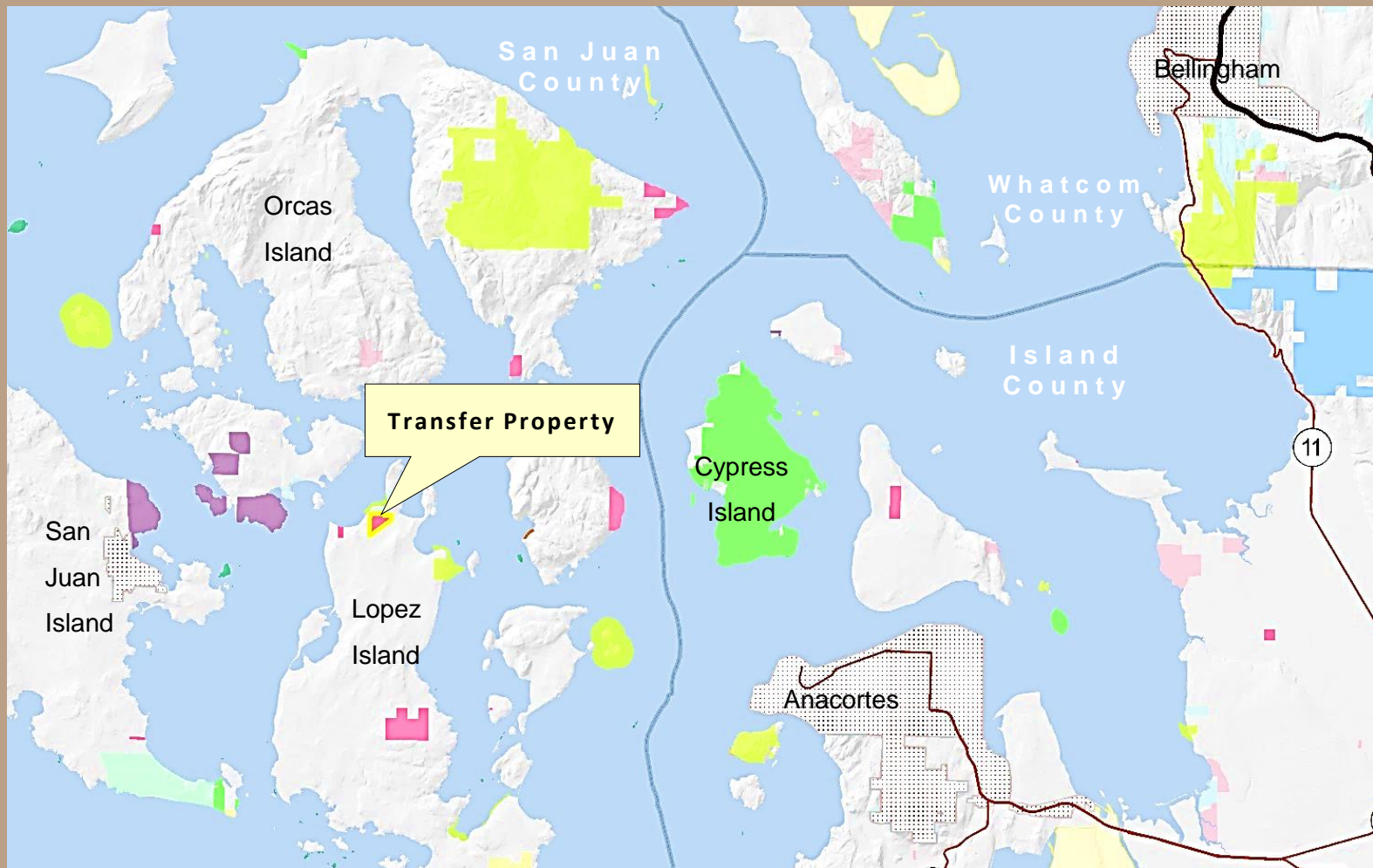
ODLIN SOUTH

Trust Transfer

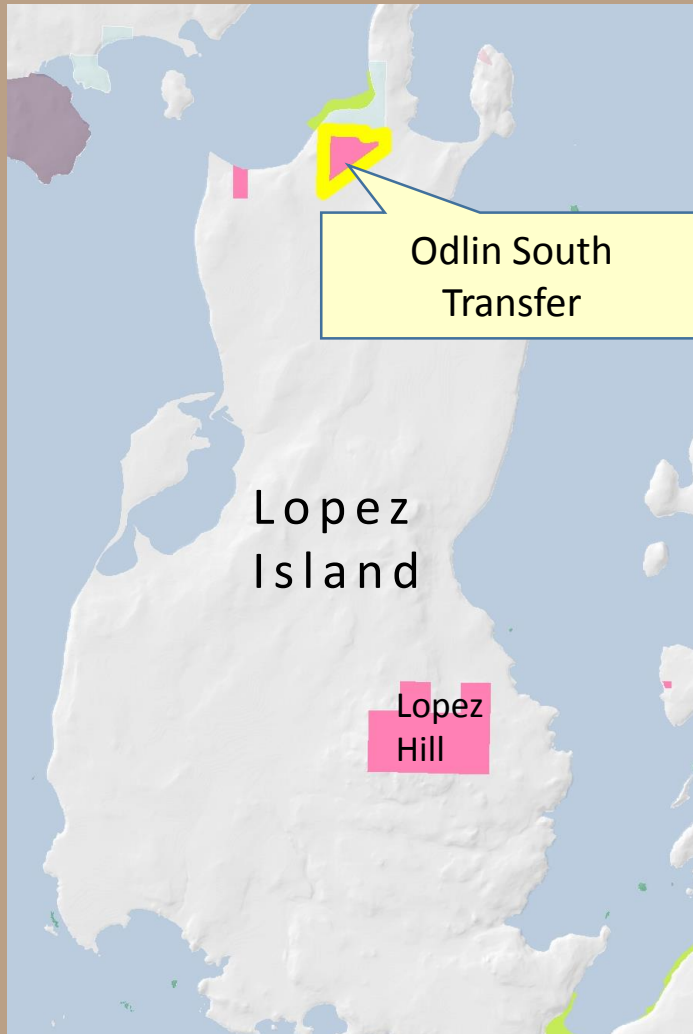
San Juan County



Odlin South Transfer



Odlin South Transfer



- **Direct transfer to San Juan County; RCW 79.17.200**
- **San Juan County is the current lessee of property; Trust Land Transfer (TLT) lease through 2061**
- **Common School Trust; Transfer would reposition the trust asset**
- **North end of Lopez Island; former USA Military Reservation Property transferred to DNR in 1959 & 1961**

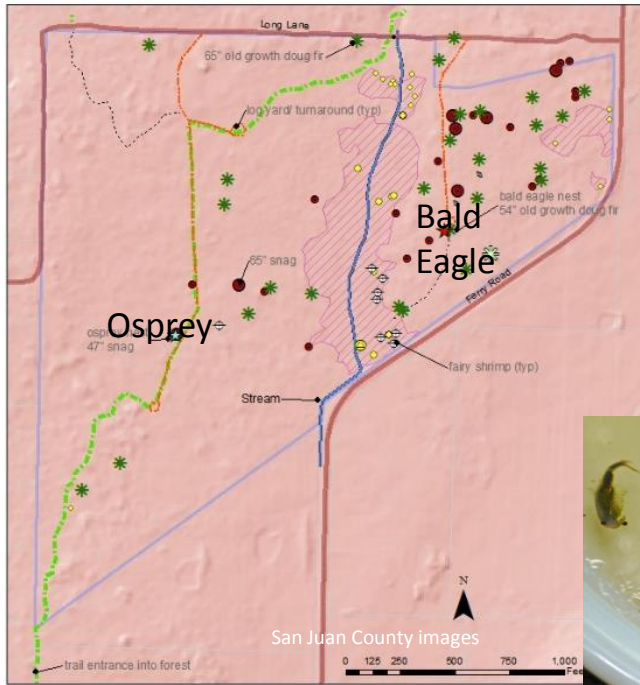
Odlin South Transfer



- **Odlin County Park to North – 80 acres**
- **Park has 30 campsites, beach access, picnic area, ballfield, mooring buoys, trails, artillery gun**
- **Request by San Juan County - current lessee; lease provision**

Odlin South Transfer

ODLIN SOUTH ECOLOGICAL ASSESSMENT



- County Ecological Assessment in 2016
- Habitat mapped includes old growth trees, snags, stream, Bald Eagle nest, Osprey nest, Oregon fairy shrimp, aspen trees
- Oregon fairy shrimp G3/S3S4

Site Features:

- Old Logging Haul Road
- Existing Trail
- Rudimentary Trail

Significant Wildlife:

- ★ Bald Eagle Nest
- Burrows or Significant Cavities
- ♻ Fairy Shrimp
- ☆ Osprey Nest

Habitats:

- ▨ Aspen Wetland
- Aspen
- ◇ Aspen outlier
- SNAG-20-38 in. dia.
- SNAG-39-65 in. dia.
- Old Growth: 39" dbh or greater
- ★ Doug fir
- Aspen
- ★ Cedar/Grand fir

Odlin South Transfer



- 103 acres in size
- Zoning - Rural Farm Forest, 1 house/15 acres; potential for 6 homes
- Past timber harvest in 1991, 44 acres
- 2011 TLT Lease payment of \$1,096,000; expires 2061; 100% of lease funds sent to beneficiary (CSCA)
- Transaction costs paid by Purchaser

Odlin South Transfer

Appraised Residual Value of Fee Interest

Appraisal	Acreage	Total Value – Residual Fee payment	Fund Recipient
Residual Value of Fee Interest	103	\$ 194,000	100% Real Property Replacement Account – Common School



Odlin South Transfer



Questions ?

Resolution #1511



