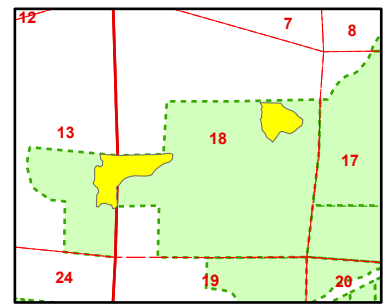
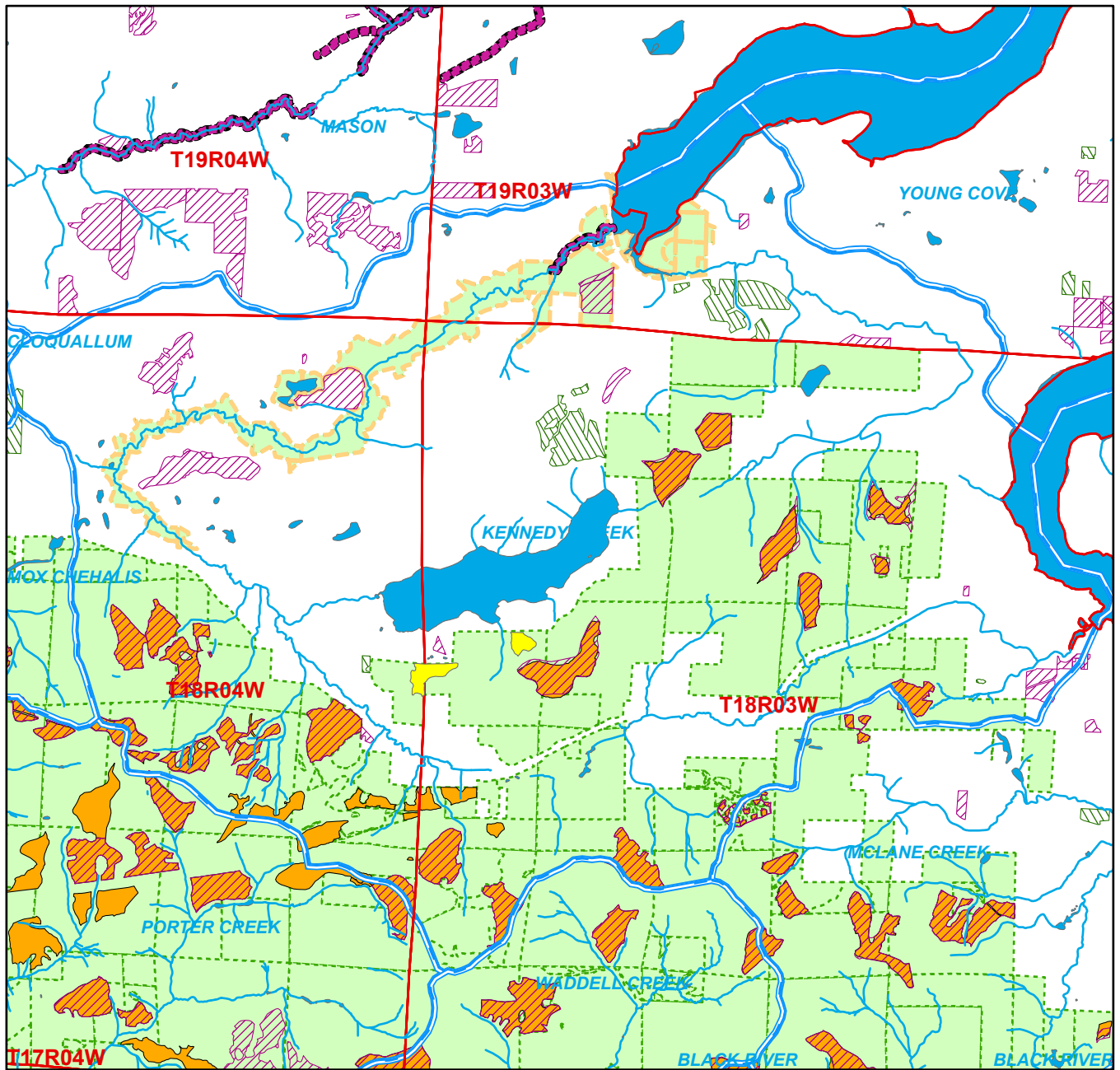


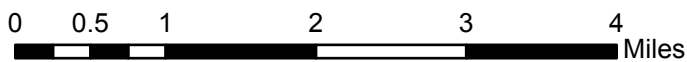
Sale Name: DELICA HARDWOOD
 Sale District: DELPHI District
 Sale Date: August, 2022
 WAU: Kennedy Creek
 WAU Acres: 22840.8
 Sale Location: T18R03W 18, T18R04W 13



This color map is produced by the Washington Department of Natural Resources (DNR), for discussion purposes only. If the copy you have is black and white, some of the information may not read correctly. Wetland locations are from the National Wetland Inventory (NWI) database. They are incomplete and may need field verification. The source data for this map is stored on the DNR's Geographic Information System. Although the DNR makes every reasonable effort to keep such data current, it cannot and does not accept liability for any errors or omissions. No warranty accompanies this material. REFER TO SEPA CHECKLIST FOR ADDITIONAL DETAIL.



1 in = 1:80,926 ft



- | | | |
|----------------------|---------------------------------|-------------------|
| Sold Sales | National Park Service | Stream Types 1-4 |
| Even-Aged Approved | US Fish and Wildlife Service | 303D Listed Water |
| Uneven-Aged Approved | US Bureau of Land Management | NAP's & NRCA's |
| DNR-Managed Land | Other Federal | Water Bodies |
| Tribal Lands | Other State | DELICA HARDWOOD |
| US Forest Service | County, Municipal or University | |
| | WAU Boundary | |

*** (Sold Sales, Even-Aged and Uneven-Aged Approved represent data from last seven years only.)**