

# Harvest Unit Adjacency Map

Sale Name: Q FLY BY NIGHT

Sale District: ALPINE

Sale Date: June, 2024

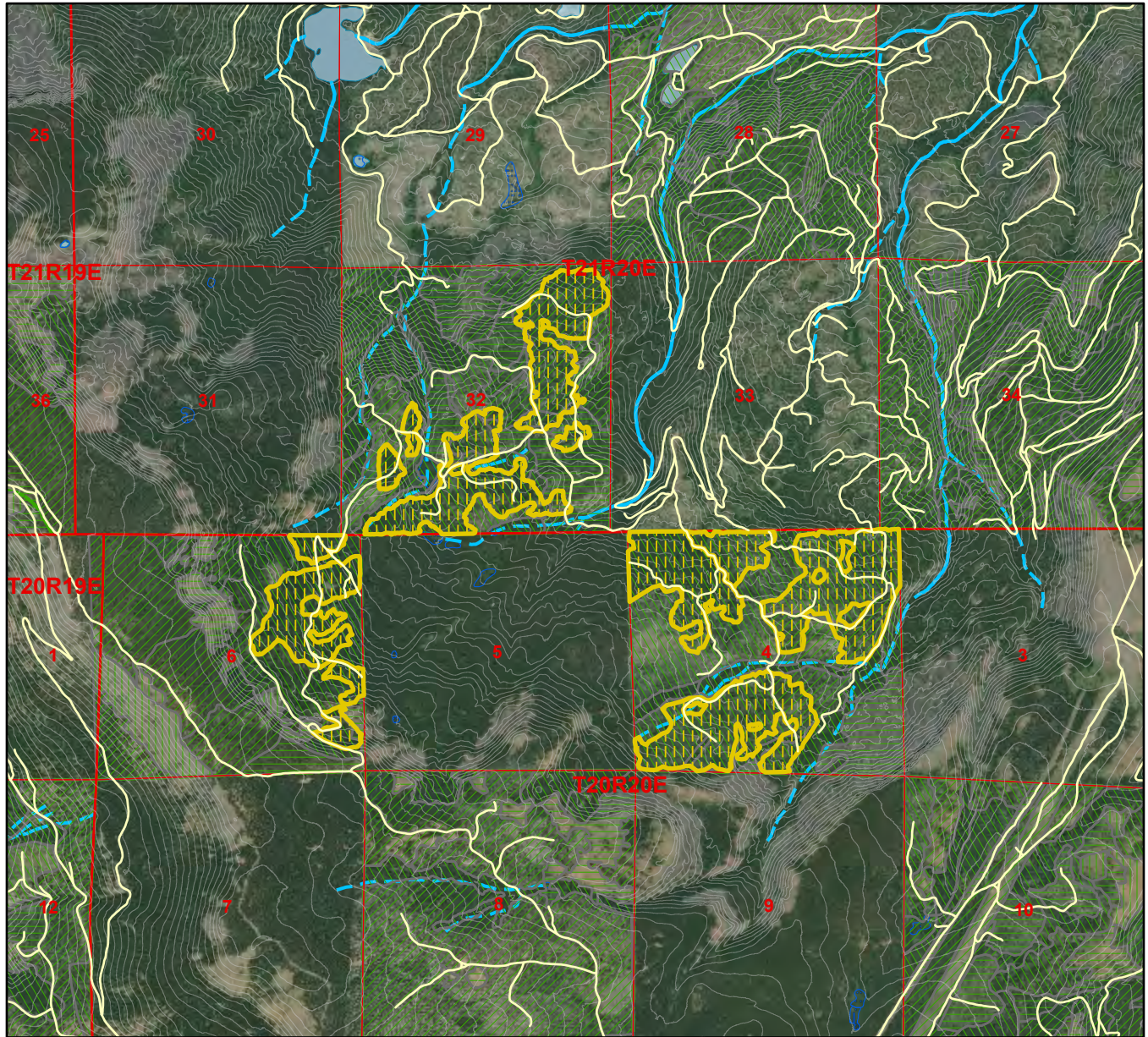
Sale Unit(s): All (13) Units

Sale Location: T20R20E 4, 6, T21R20E 32



23	24	19	20	21	22	23	24
26	25	30	29	28	27	26	25
35	36	31	32	33	34	35	36
2	1	6	5	4	3	2	1
11	12	7	8	9	10	11	12
14	13	18	17	16	15	14	13

This color map is produced by the Washington Department of Natural Resources (DNR), for discussion purposes only. If the copy you have is black and white, some of the information may not read correctly. Wetland locations are from the National Wetland Inventory (NWI) database. They are incomplete and may need field verification. The source data for this map is stored on the DNR's Geographic Information System. Although the DNR makes every reasonable effort to keep such data current, it cannot and does not accept liability for any errors or omissions. No warranty accompanies this material. Refer to the SEPA Checklist for additional detail.



- Sold Sales
- 76+ Years old
- Type 1 Streams
- 303D Listed Water
- 0 - 25 Years old
- Other/Unknown
- Type 2 Streams
- DNR-Managed Land
- 26 - 50 Years old
- Open Water
- Type 3 Streams
- DNR NAP's & NRCA's
- 51 - 75 Years old
- Wetlands (NWI)
- Type 4 Streams
- Q FLY BY NIGHT

\*Sold Sales represent data from last 7 years only

Map created on: 12/6/2023



# Harvest Unit Adjacency Map

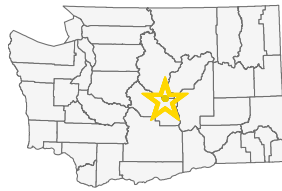
Sale Name: Q FLY BY NIGHT

Sale District: ALPINE

Sale Date: June, 2024

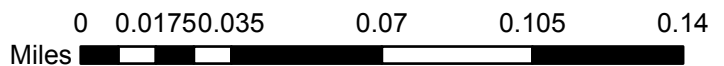
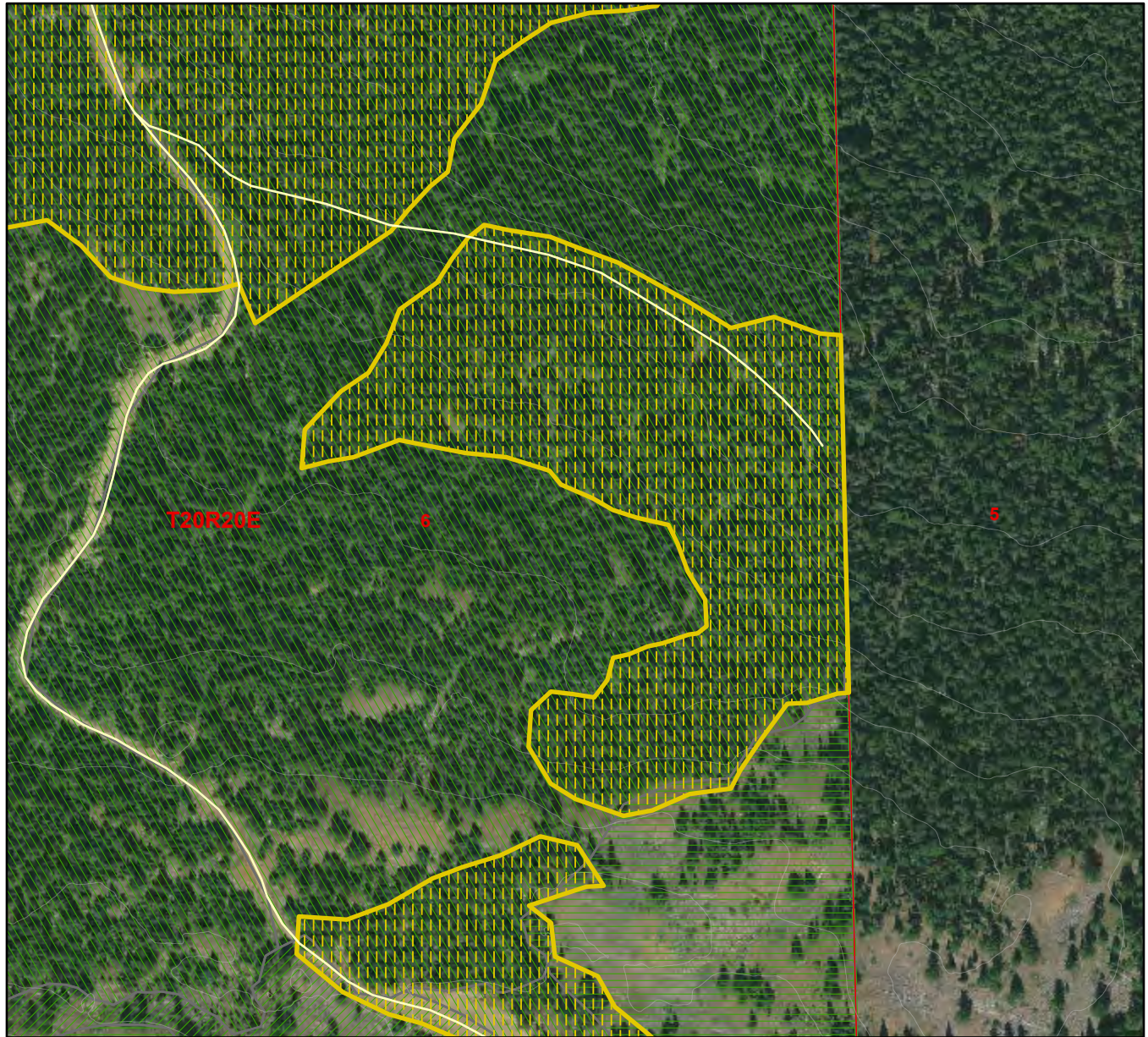
Sale (centered on) Activity ID: 332953

Sale Location: T20R20E 4, 6, T21R20E 32



23	24	19	20	21	22	23	24
26	25	30	29	28	27	26	25
35	36	31	32	33	34	35	36
2	1	6	5	4	3	2	1
11	12	7	8	9	10	11	12
14	13	18	17	16	15	14	13

This color map is produced by the Washington Department of Natural Resources (DNR), for discussion purposes only. If the copy you have is black and white, some of the information may not read correctly. Wetland locations are from the National Wetland Inventory (NWI) database. They are incomplete and may need field verification. The source data for this map is stored on the DNR's Geographic Information System. Although the DNR makes every reasonable effort to keep such data current, it cannot and does not accept liability for any errors or omissions. No warranty accompanies this material. Refer to the SEPA Checklist for additional detail.



- Sold Sales
- 76+ Years old
- Type 1 Streams
- 303D Listed Water
- 0 - 25 Years old
- Other/Unknown
- Type 2 Streams
- DNR-Managed Land
- 26 - 50 Years old
- Open Water
- Type 3 Streams
- DNR NAP's & NRCA's
- 51 - 75 Years old
- Wetlands (NWI)
- Type 4 Streams
- Q FLY BY NIGHT

\*Sold Sales represent data from last 7 years only

Map created on: 12/6/2023



# Harvest Unit Adjacency Map

Sale Name: Q FLY BY NIGHT

Sale District: ALPINE

Sale Date: June, 2024

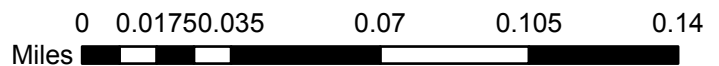
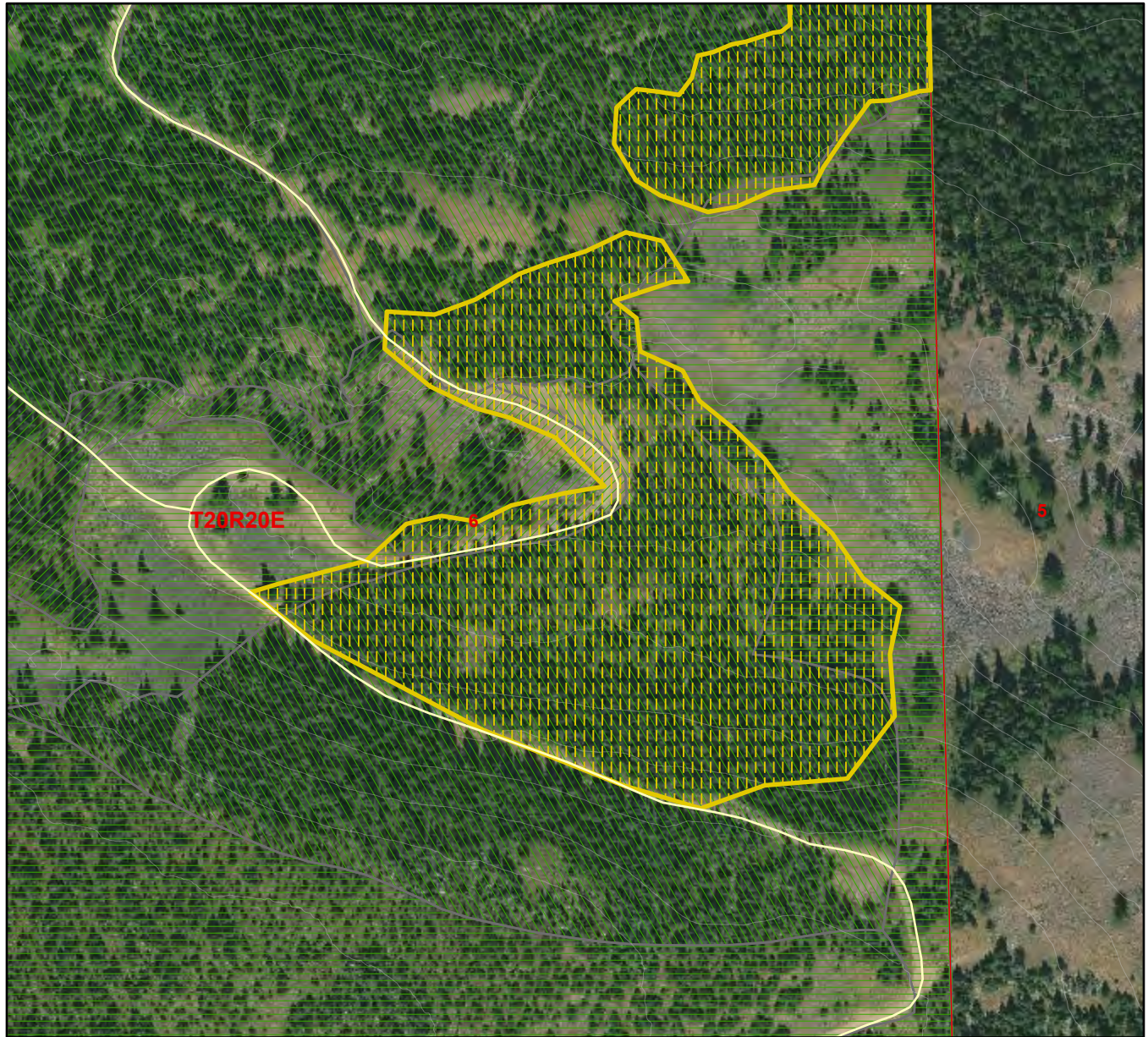
Sale (centered on) Activity ID: 332952

Sale Location: T20R20E 4, 6, T21R20E 32



23	24	19	20	21	22	23	24
26	25	30	29	28	27	26	25
35	36	31	32	33	34	35	36
2	1	6	5	4	3	2	1
11	12	7	8	9	10	11	12
14	13	18	17	16	15	14	13

This color map is produced by the Washington Department of Natural Resources (DNR), for discussion purposes only. If the copy you have is black and white, some of the information may not read correctly. Wetland locations are from the National Wetland Inventory (NWI) database. They are incomplete and may need field verification. The source data for this map is stored on the DNR's Geographic Information System. Although the DNR makes every reasonable effort to keep such data current, it cannot and does not accept liability for any errors or omissions. No warranty accompanies this material. Refer to the SEPA Checklist for additional detail.



- Sold Sales
- 76+ Years old
- Type 1 Streams
- 303D Listed Water
- 0 - 25 Years old
- Other/Unknown
- Type 2 Streams
- DNR-Managed Land
- 26 - 50 Years old
- Open Water
- Type 3 Streams
- DNR NAP's & NRCA's
- 51 - 75 Years old
- Wetlands (NWI)
- Type 4 Streams
- Q FLY BY NIGHT

\*Sold Sales represent data from last 7 years only

Map created on: 12/6/2023



# Harvest Unit Adjacency Map

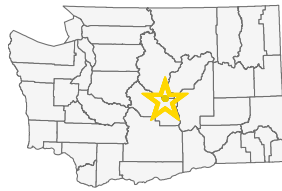
Sale Name: Q FLY BY NIGHT

Sale District: ALPINE

Sale Date: June, 2024

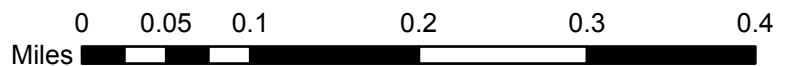
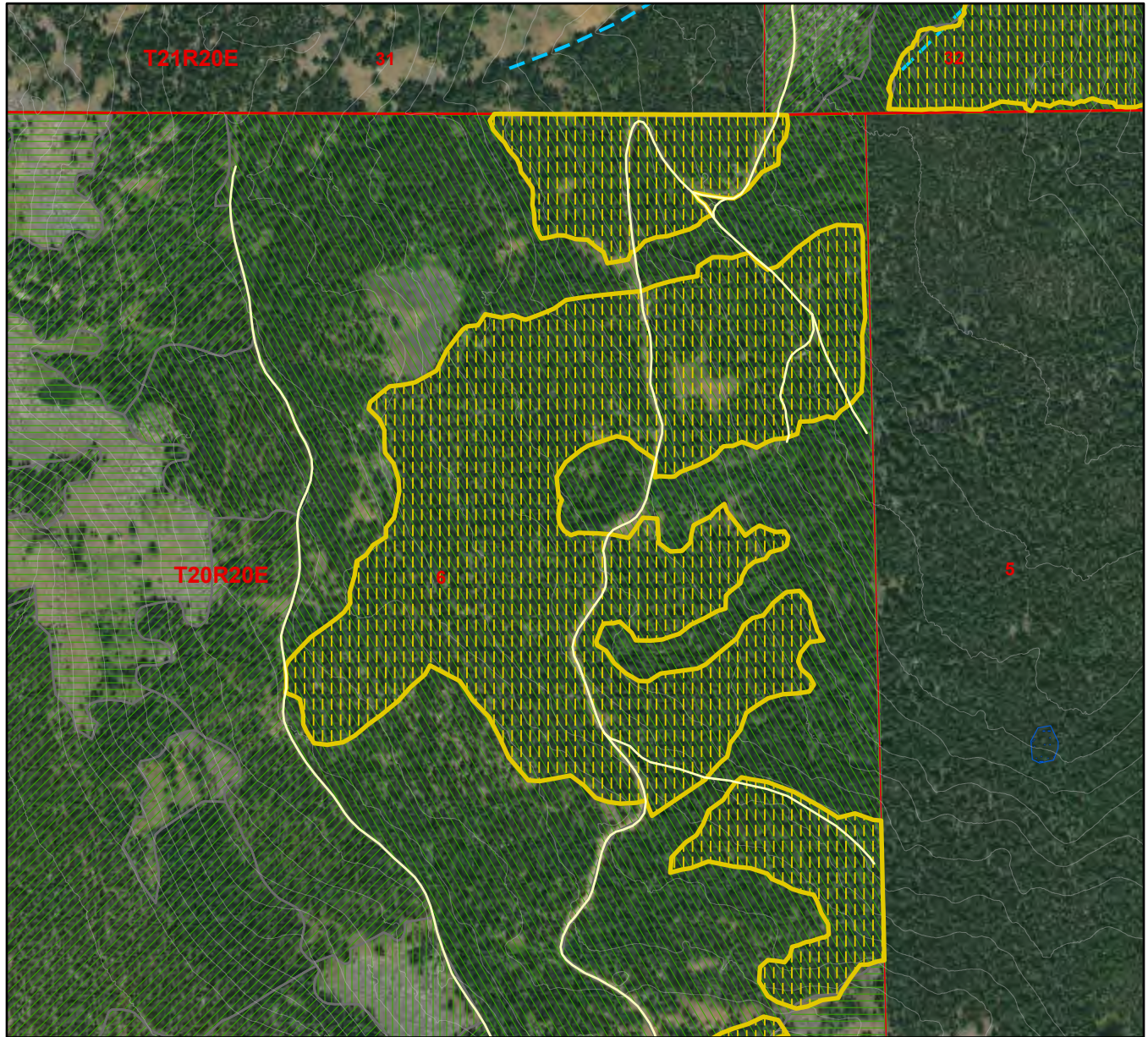
Sale (centered on) Activity ID: 332954

Sale Location: T20R20E 4, 6, T21R20E 32



23	24	19	20	21	22	23	24
26	25	30	29	28	27	26	25
35	36	31	32	33	34	35	36
2	1	6	5	4	3	2	1
11	12	7	8	9	10	11	12
14	13	18	17	16	15	14	13

This color map is produced by the Washington Department of Natural Resources (DNR), for discussion purposes only. If the copy you have is black and white, some of the information may not read correctly. Wetland locations are from the National Wetland Inventory (NWI) database. They are incomplete and may need field verification. The source data for this map is stored on the DNR's Geographic Information System. Although the DNR makes every reasonable effort to keep such data current, it cannot and does not accept liability for any errors or omissions. No warranty accompanies this material. Refer to the SEPA Checklist for additional detail.



- Sold Sales
- 76+ Years old
- Type 1 Streams
- 303D Listed Water
- 0 - 25 Years old
- Other/Unknown
- Type 2 Streams
- DNR-Managed Land
- 26 - 50 Years old
- Open Water
- Type 3 Streams
- DNR NAP's & NRCA's
- 51 - 75 Years old
- Wetlands (NWI)
- Type 4 Streams
- Q FLY BY NIGHT

\*Sold Sales represent data from last 7 years only

Map created on: 12/6/2023



# Harvest Unit Adjacency Map

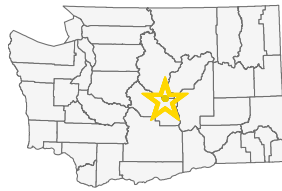
Sale Name: Q FLY BY NIGHT

Sale District: ALPINE

Sale Date: June, 2024

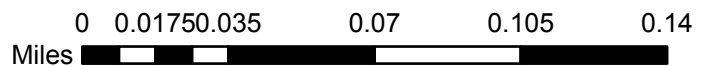
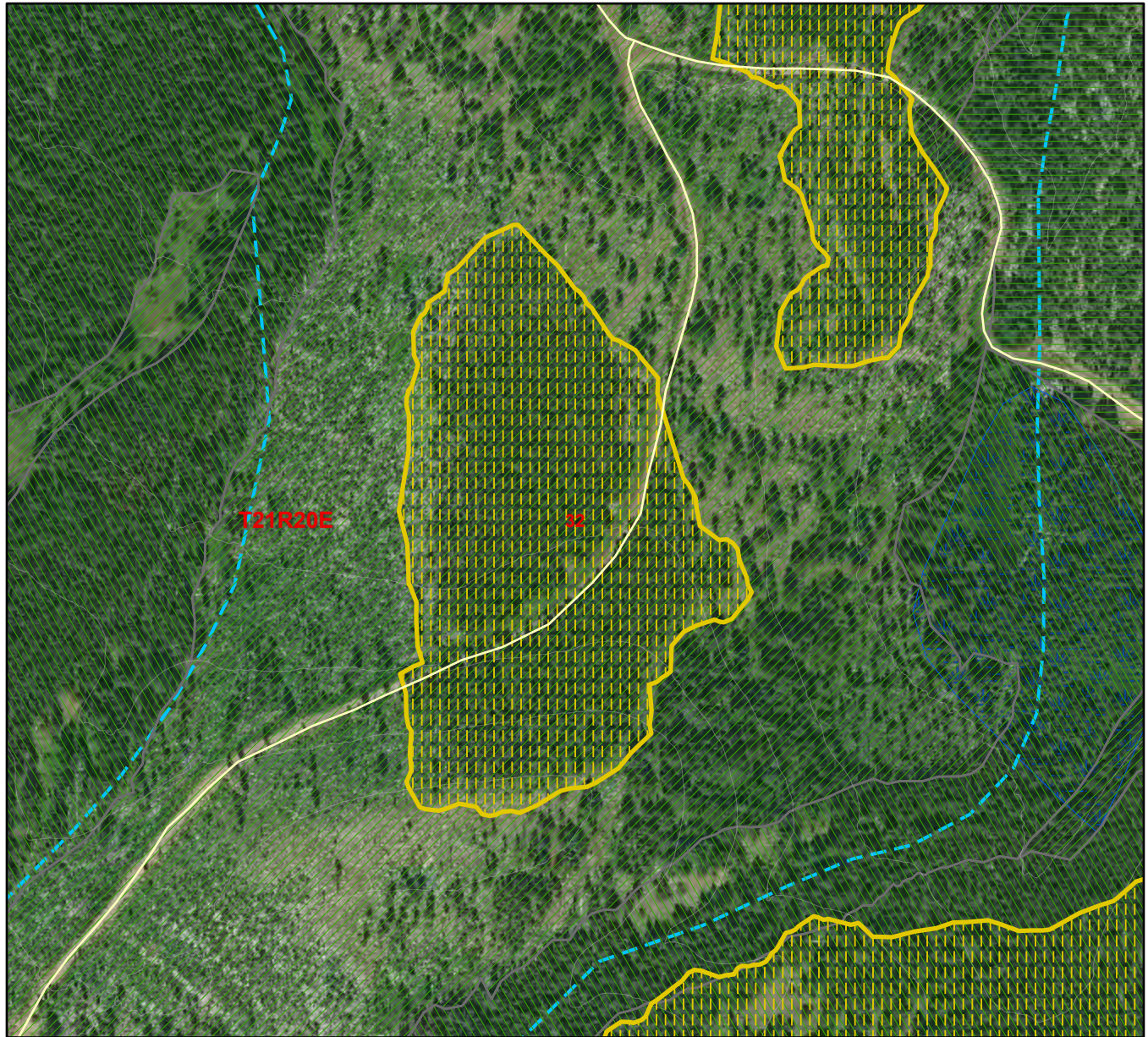
Sale (centered on) Activity ID: 332955

Sale Location: T20R20E 4, 6, T21R20E 32



23	24	19	20	21	22	23	24
26	25	30	29	28	27	26	25
35	36	31	32	33	34	35	36
2	1	6	5	4	3	2	1
11	12	7	8	9	10	11	12
14	13	18	17	16	15	14	13

This color map is produced by the Washington Department of Natural Resources (DNR), for discussion purposes only. If the copy you have is black and white, some of the information may not read correctly. Wetland locations are from the National Wetland Inventory (NWI) database. They are incomplete and may need field verification. The source data for this map is stored on the DNR's Geographic Information System. Although the DNR makes every reasonable effort to keep such data current, it cannot and does not accept liability for any errors or omissions. No warranty accompanies this material. Refer to the SEPA Checklist for additional detail.



- Sold Sales
- 76+ Years old
- Type 1 Streams
- 303D Listed Water
- 0 - 25 Years old
- Other/Unknown
- Type 2 Streams
- DNR-Managed Land
- 26 - 50 Years old
- Open Water
- Type 3 Streams
- DNR NAP's & NRCA's
- 51 - 75 Years old
- Wetlands (NWI)
- Type 4 Streams
- Q FLY BY NIGHT

\*Sold Sales represent data from last 7 years only

Map created on: 12/6/2023



# Harvest Unit Adjacency Map

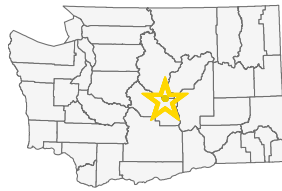
Sale Name: Q FLY BY NIGHT

Sale District: ALPINE

Sale Date: June, 2024

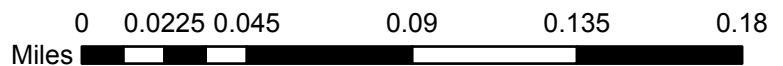
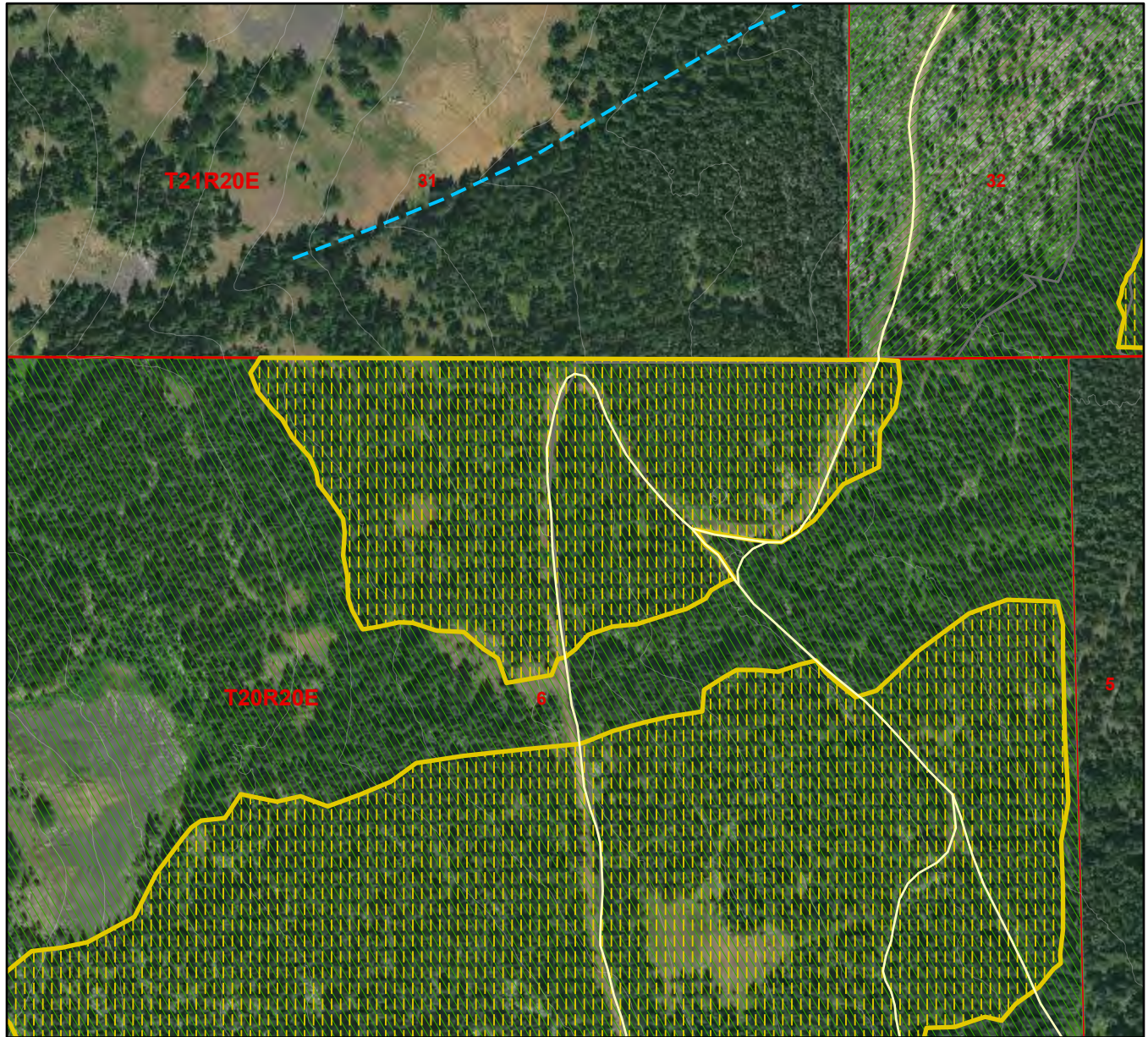
Sale (centered on) Activity ID: 332956

Sale Location: T20R20E 4, 6, T21R20E 32



23	24	19	20	21	22	23	24
26	25	30	29	28	27	26	25
35	36	31	32	33	34	35	36
2	1	6	5	4	3	2	1
11	12	7	8	9	10	11	12
14	13	18	17	16	15	14	13

This color map is produced by the Washington Department of Natural Resources (DNR), for discussion purposes only. If the copy you have is black and white, some of the information may not read correctly. Wetland locations are from the National Wetland Inventory (NWI) database. They are incomplete and may need field verification. The source data for this map is stored on the DNR's Geographic Information System. Although the DNR makes every reasonable effort to keep such data current, it cannot and does not accept liability for any errors or omissions. No warranty accompanies this material. Refer to the SEPA Checklist for additional detail.



- Sold Sales
- 76+ Years old
- Type 1 Streams
- 303D Listed Water
- 0 - 25 Years old
- Other/Unknown
- Type 2 Streams
- DNR-Managed Land
- 26 - 50 Years old
- Open Water
- Type 3 Streams
- DNR NAP's & NRCA's
- 51 - 75 Years old
- Wetlands (NWI)
- Type 4 Streams
- Q FLY BY NIGHT

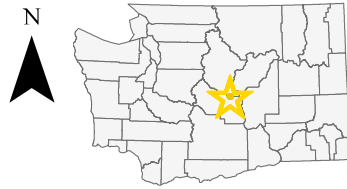
\*Sold Sales represent data from last 7 years only

Map created on: 12/6/2023



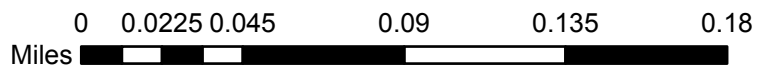
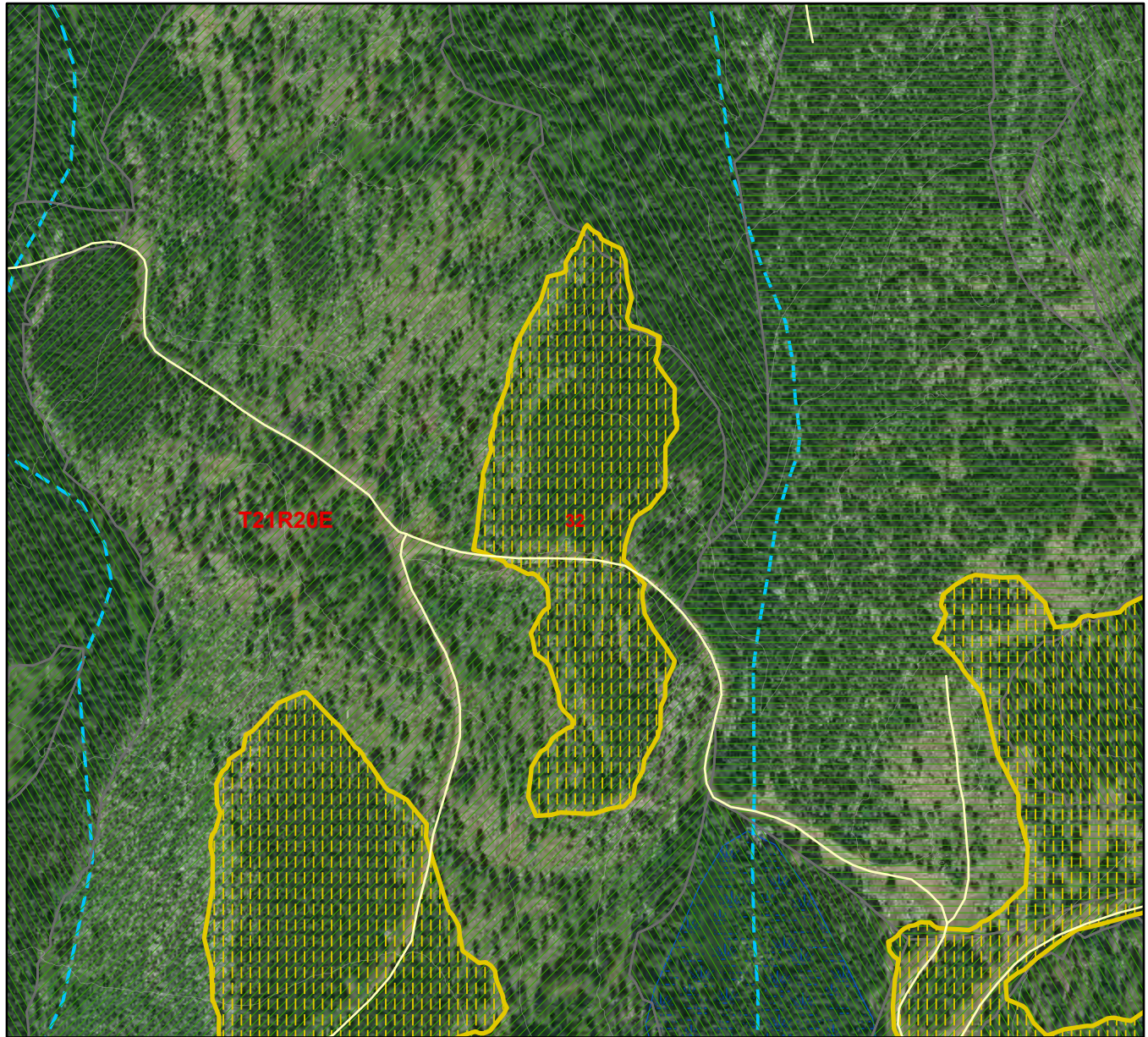
# Harvest Unit Adjacency Map

Sale Name: Q FLY BY NIGHT  
 Sale District: ALPINE  
 Sale Date: June, 2024  
 Sale (centered on) Activity ID: 332957  
 Sale Location: T20R20E 4, 6, T21R20E 32



23	24	19	20	21	22	23	24
26	25	30	29	28	27	26	25
35	36	31	32	33	34	35	36
2	1	6	5	4	3	2	1
11	12	7	8	9	10	11	12
14	13	18	17	16	15	14	13

This color map is produced by the Washington Department of Natural Resources (DNR), for discussion purposes only. If the copy you have is black and white, some of the information may not read correctly. Wetland locations are from the National Wetland Inventory (NWI) database. They are incomplete and may need field verification. The source data for this map is stored on the DNR's Geographic Information System. Although the DNR makes every reasonable effort to keep such data current, it cannot and does not accept liability for any errors or omissions. No warranty accompanies this material. Refer to the SEPA Checklist for additional detail.



- Sold Sales
- 76+ Years old
- Type 1 Streams
- 303D Listed Water
- 0 - 25 Years old
- Other/Unknown
- Type 2 Streams
- DNR-Managed Land
- 26 - 50 Years old
- Open Water
- Type 3 Streams
- DNR NAP's & NRCA's
- 51 - 75 Years old
- Wetlands (NWI)
- Type 4 Streams
- Q FLY BY NIGHT

\*Sold Sales represent data from last 7 years only

Map created on: 12/6/2023



# Harvest Unit Adjacency Map

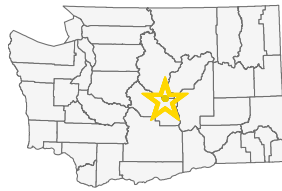
Sale Name: Q FLY BY NIGHT

Sale District: ALPINE

Sale Date: June, 2024

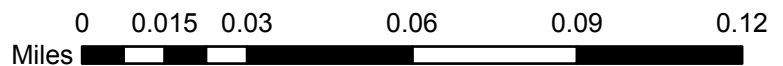
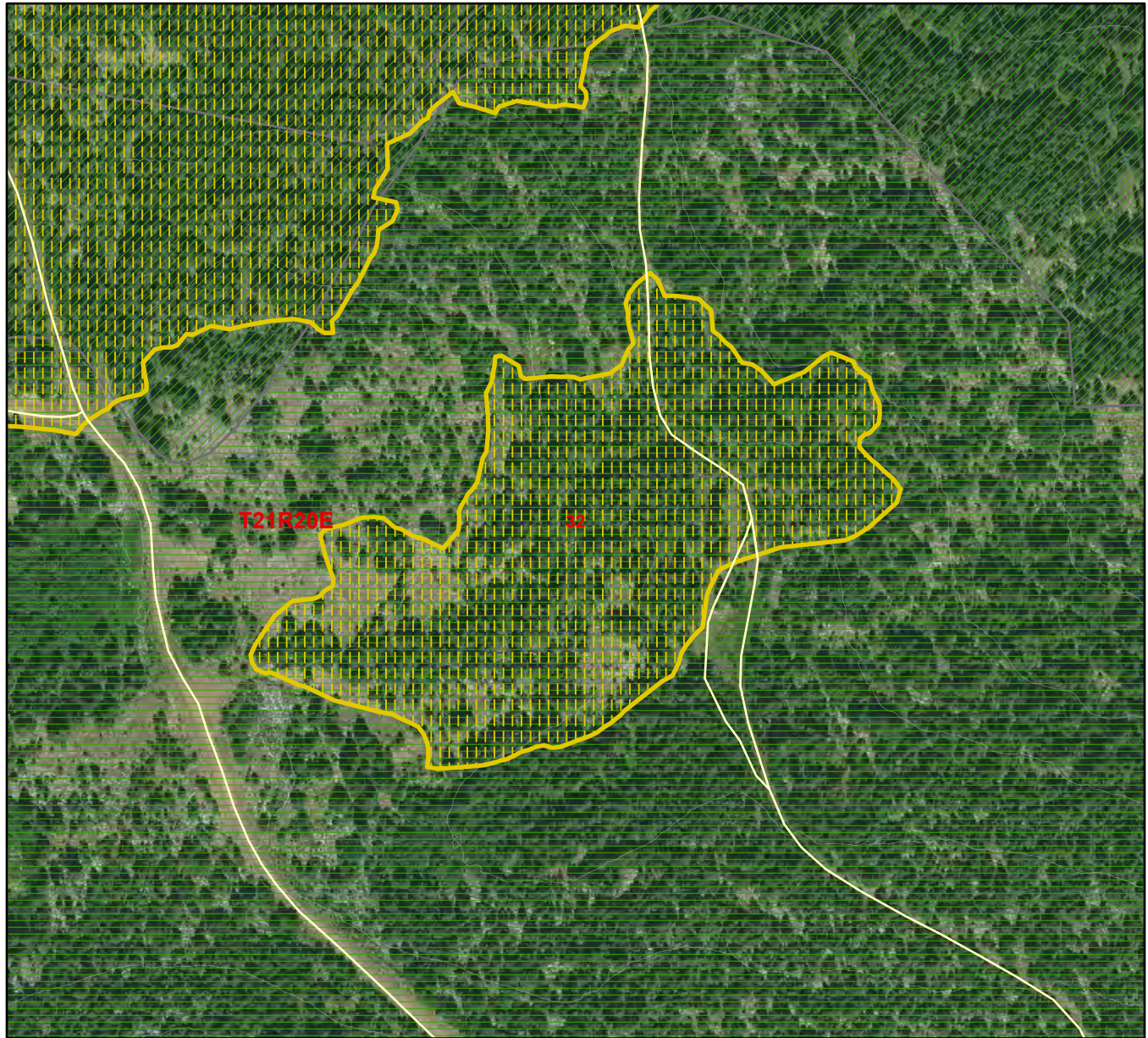
Sale (centered on) Activity ID: 335101

Sale Location: T20R20E 4, 6, T21R20E 32



23	24	19	20	21	22	23	24
26	25	30	29	28	27	26	25
35	36	31	32	33	34	35	36
2	1	6	5	4	3	2	1
11	12	7	8	9	10	11	12
14	13	18	17	16	15	14	13

This color map is produced by the Washington Department of Natural Resources (DNR), for discussion purposes only. If the copy you have is black and white, some of the information may not read correctly. Wetland locations are from the National Wetland Inventory (NWI) database. They are incomplete and may need field verification. The source data for this map is stored on the DNR's Geographic Information System. Although the DNR makes every reasonable effort to keep such data current, it cannot and does not accept liability for any errors or omissions. No warranty accompanies this material. Refer to the SEPA Checklist for additional detail.



- Sold Sales
- 76+ Years old
- Type 1 Streams
- 303D Listed Water
- 0 - 25 Years old
- Other/Unknown
- Type 2 Streams
- DNR-Managed Land
- 26 - 50 Years old
- Open Water
- Type 3 Streams
- DNR NAP's & NRCA's
- 51 - 75 Years old
- Wetlands (NWI)
- Type 4 Streams
- Q FLY BY NIGHT

\*Sold Sales represent data from last 7 years only

Map created on: 12/6/2023



# Harvest Unit Adjacency Map

Sale Name: Q FLY BY NIGHT

Sale District: ALPINE

Sale Date: June, 2024

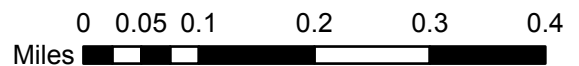
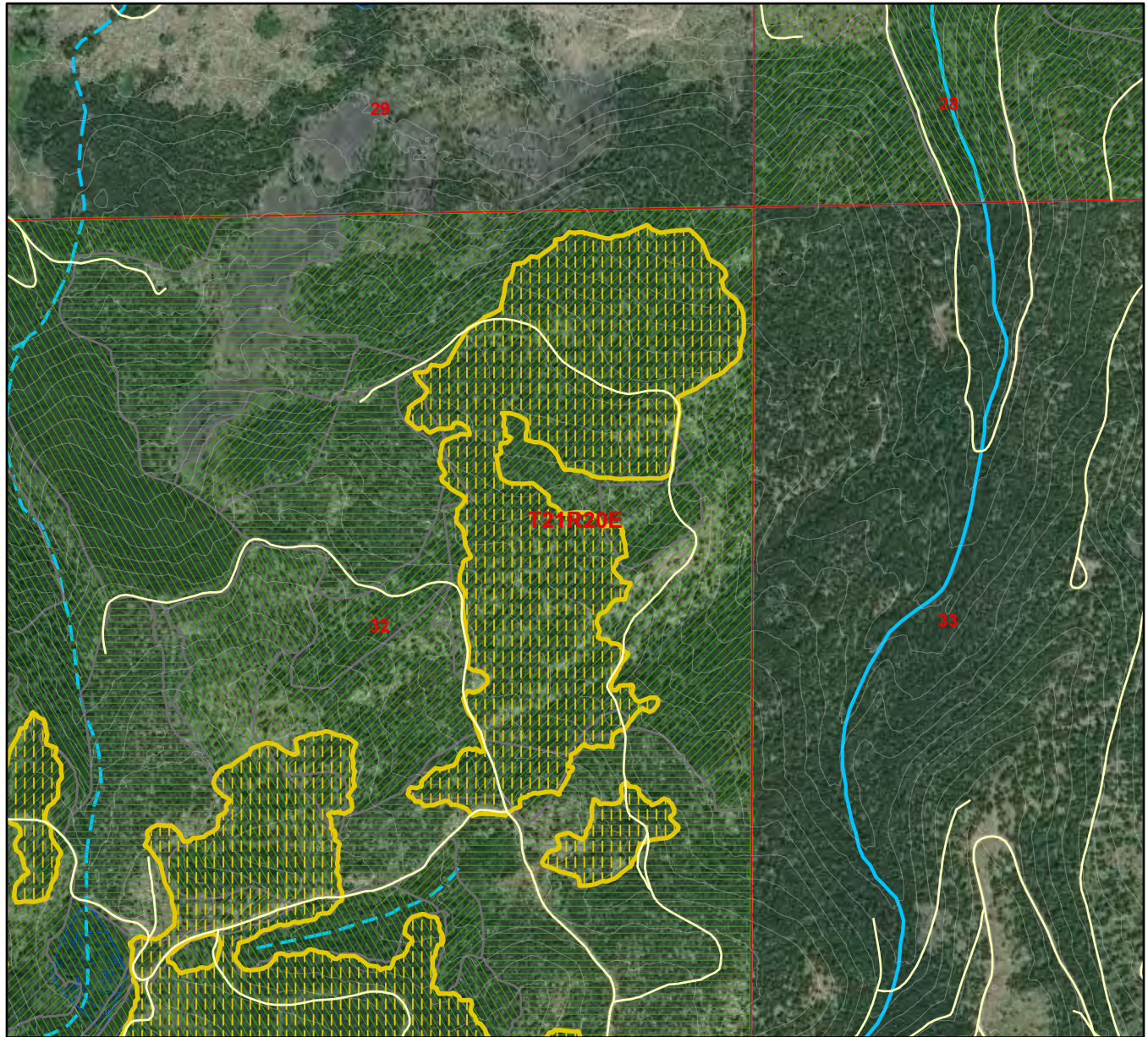
Sale (centered on) Activity ID: 335102

Sale Location: T20R20E 4, 6, T21R20E 32



23	24	19	20	21	22	23	24
26	25	30	29	28	27	26	25
35	36	31	32	33	34	35	36
2	1	6	5	4	3	2	1
11	12	7	8	9	10	11	12
14	13	18	17	16	15	14	13

This color map is produced by the Washington Department of Natural Resources (DNR), for discussion purposes only. If the copy you have is black and white, some of the information may not read correctly. Wetland locations are from the National Wetland Inventory (NWI) database. They are incomplete and may need field verification. The source data for this map is stored on the DNR's Geographic Information System. Although the DNR makes every reasonable effort to keep such data current, it cannot and does not accept liability for any errors or omissions. No warranty accompanies this material. Refer to the SEPA Checklist for additional detail.



- Sold Sales
- 76+ Years old
- Type 1 Streams
- 303D Listed Water
- 0 - 25 Years old
- Other/Unknown
- Type 2 Streams
- DNR-Managed Land
- 26 - 50 Years old
- Open Water
- Type 3 Streams
- DNR NAP's & NRCA's
- 51 - 75 Years old
- Wetlands (NWI)
- Type 4 Streams
- Q FLY BY NIGHT

\*Sold Sales represent data from last 7 years only

Map created on: 12/6/2023



# Harvest Unit Adjacency Map

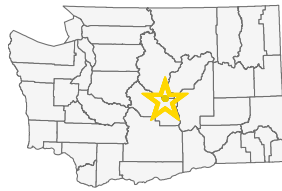
Sale Name: Q FLY BY NIGHT

Sale District: ALPINE

Sale Date: June, 2024

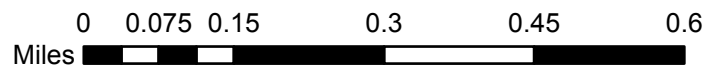
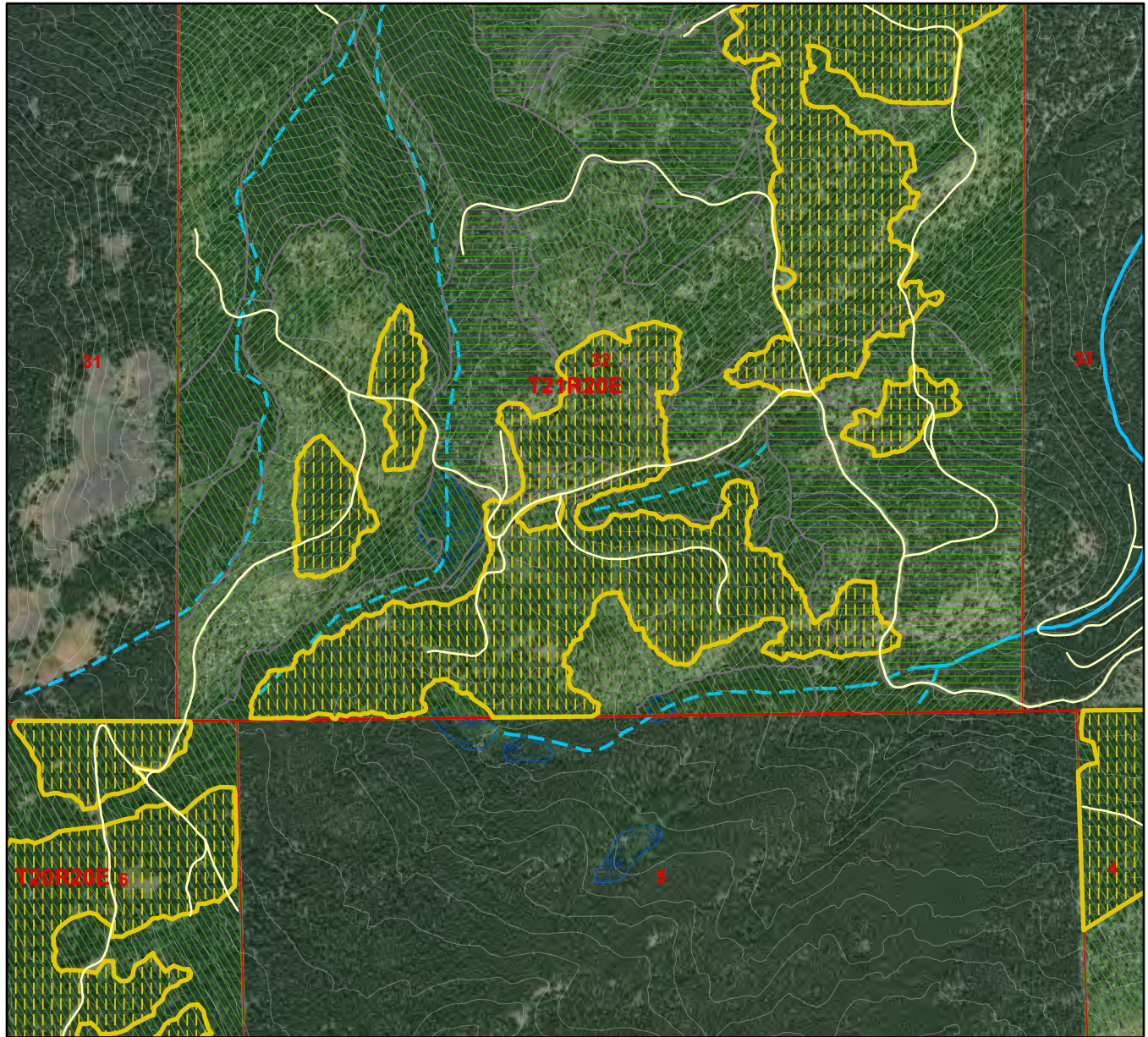
Sale (centered on) Activity ID: 332958

Sale Location: T20R20E 4, 6, T21R20E 32



23	24	19	20	21	22	23	24
26	25	30	29	28	27	26	25
35	36	31	32	33	34	35	36
2	1	6	5	4	3	2	1
11	12	7	8	9	10	11	12
14	13	18	17	16	15	14	13

This color map is produced by the Washington Department of Natural Resources (DNR), for discussion purposes only. If the copy you have is black and white, some of the information may not read correctly. Wetland locations are from the National Wetland Inventory (NWI) database. They are incomplete and may need field verification. The source data for this map is stored on the DNR's Geographic Information System. Although the DNR makes every reasonable effort to keep such data current, it cannot and does not accept liability for any errors or omissions. No warranty accompanies this material. Refer to the SEPA Checklist for additional detail.



- Sold Sales
- 76+ Years old
- Type 1 Streams
- 303D Listed Water
- 0 - 25 Years old
- Other/Unknown
- Type 2 Streams
- DNR-Managed Land
- 26 - 50 Years old
- Open Water
- Type 3 Streams
- DNR NAP's & NRCA's
- 51 - 75 Years old
- Wetlands (NWI)
- Type 4 Streams
- Q FLY BY NIGHT

\*Sold Sales represent data from last 7 years only

Map created on: 12/6/2023



# Harvest Unit Adjacency Map

Sale Name: Q FLY BY NIGHT

Sale District: ALPINE

Sale Date: June, 2024

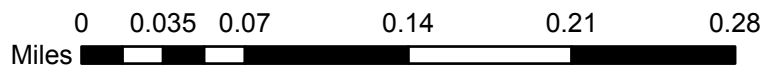
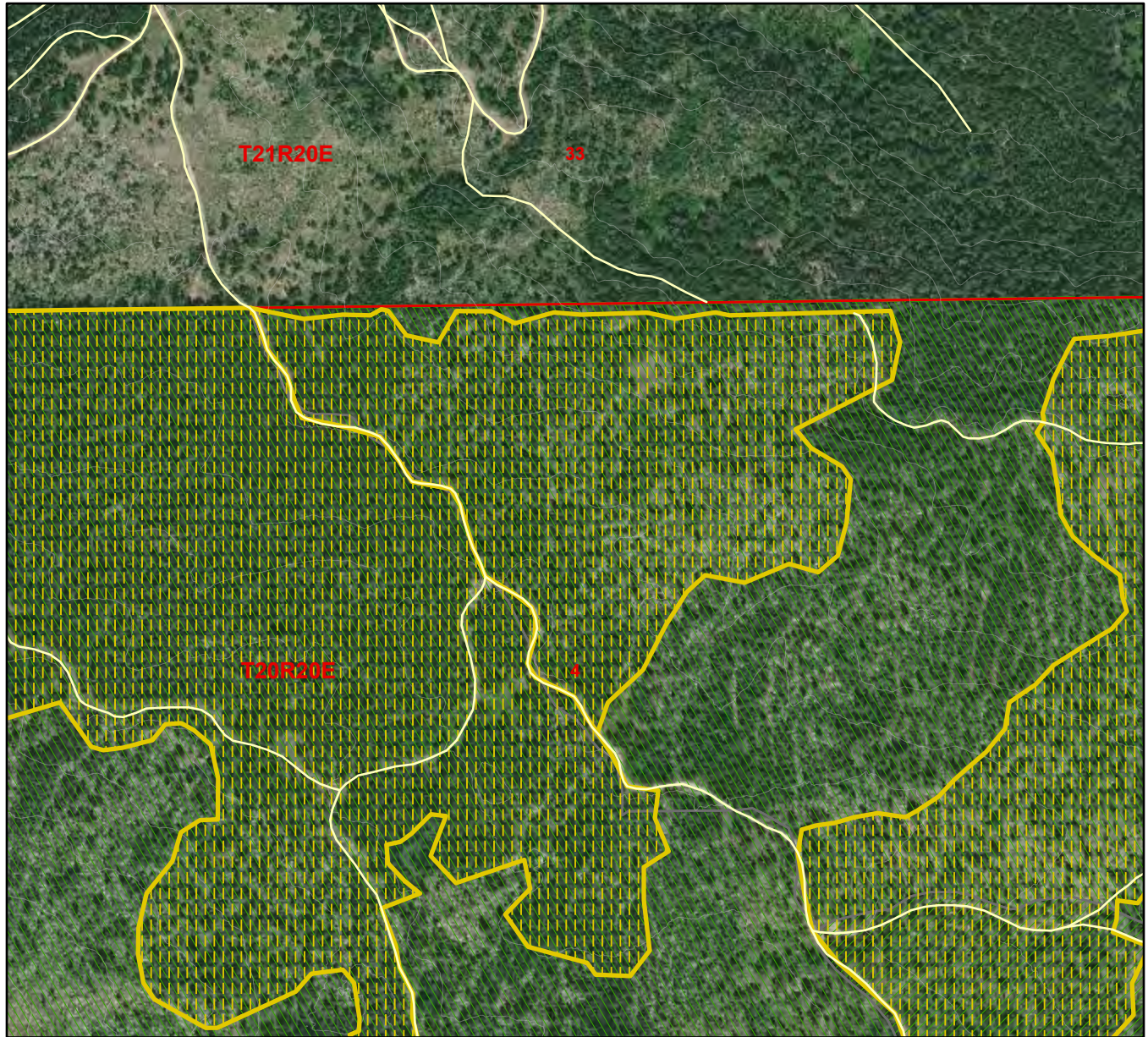
Sale (centered on) Activity ID: 335105

Sale Location: T20R20E 4, 6, T21R20E 32



23	24	19	20	21	22	23	24
26	25	30	29	28	27	26	25
35	36	31	32	33	34	35	36
2	1	6	5	4	3	2	1
11	12	7	8	9	10	11	12
14	13	18	17	16	15	14	13

This color map is produced by the Washington Department of Natural Resources (DNR), for discussion purposes only. If the copy you have is black and white, some of the information may not read correctly. Wetland locations are from the National Wetland Inventory (NWI) database. They are incomplete and may need field verification. The source data for this map is stored on the DNR's Geographic Information System. Although the DNR makes every reasonable effort to keep such data current, it cannot and does not accept liability for any errors or omissions. No warranty accompanies this material. Refer to the SEPA Checklist for additional detail.



- Sold Sales
- 76+ Years old
- Type 1 Streams
- 303D Listed Water
- 0 - 25 Years old
- Other/Unknown
- Type 2 Streams
- DNR-Managed Land
- 26 - 50 Years old
- Open Water
- Type 3 Streams
- DNR NAP's & NRCA's
- 51 - 75 Years old
- Wetlands (NWI)
- Type 4 Streams
- Q FLY BY NIGHT

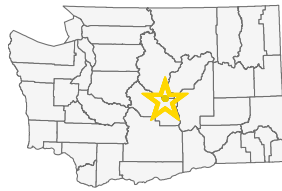
\*Sold Sales represent data from last 7 years only

Map created on: 12/6/2023



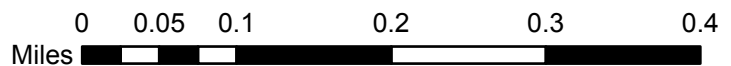
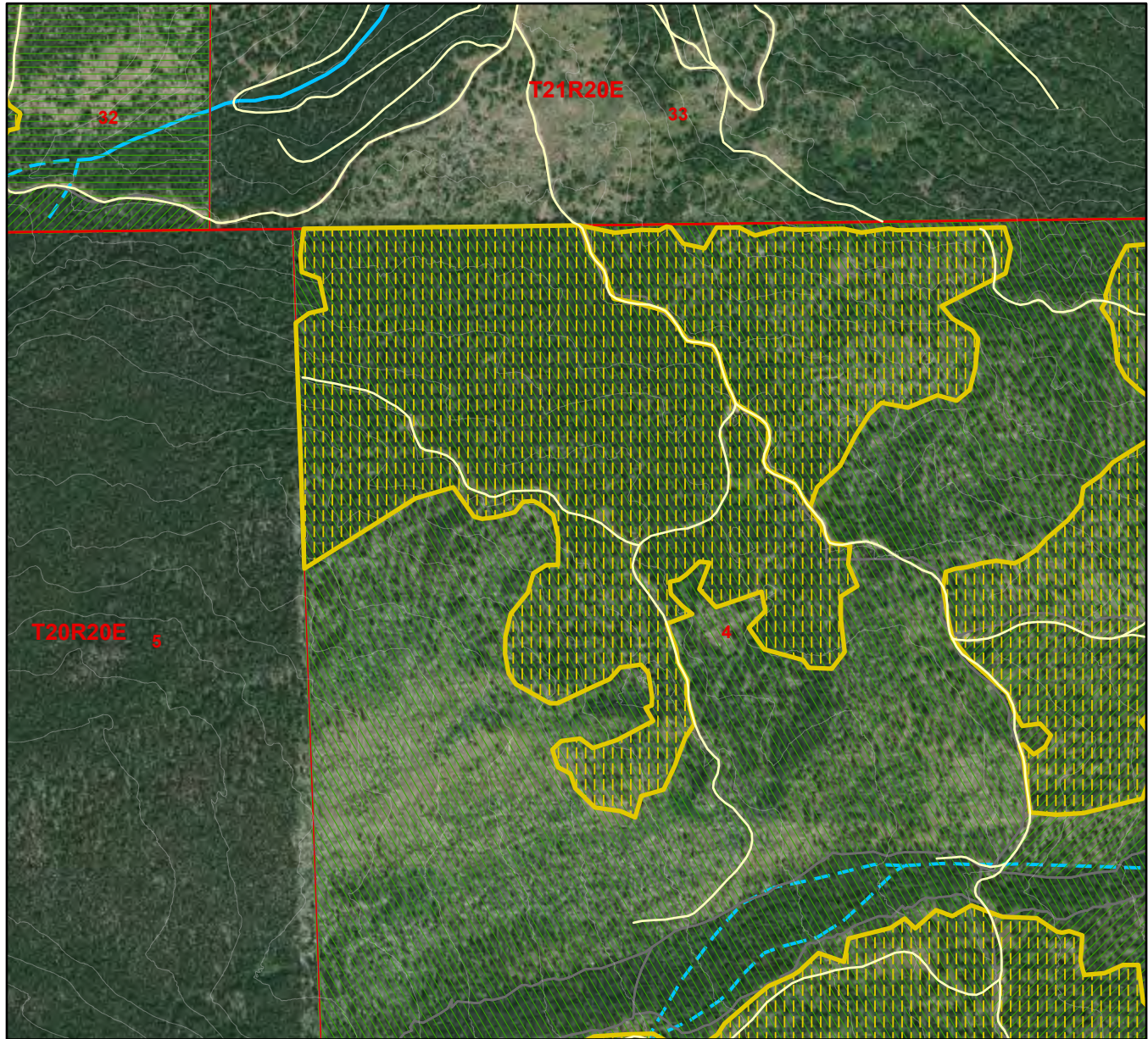
# Harvest Unit Adjacency Map

Sale Name: Q FLY BY NIGHT  
 Sale District: ALPINE  
 Sale Date: June, 2024  
 Sale (centered on) Activity ID: 335104  
 Sale Location: T20R20E 4, 6, T21R20E 32



23	24	19	20	21	22	23	24
26	25	30	29	28	27	26	25
35	36	31	32	33	34	35	36
2	1	6	5	4	3	2	1
11	12	7	8	9	10	11	12
14	13	18	17	16	15	14	13

This color map is produced by the Washington Department of Natural Resources (DNR), for discussion purposes only. If the copy you have is black and white, some of the information may not read correctly. Wetland locations are from the National Wetland Inventory (NWI) database. They are incomplete and may need field verification. The source data for this map is stored on the DNR's Geographic Information System. Although the DNR makes every reasonable effort to keep such data current, it cannot and does not accept liability for any errors or omissions. No warranty accompanies this material. Refer to the SEPA Checklist for additional detail.



- Sold Sales
- 76+ Years old
- Type 1 Streams
- 303D Listed Water
- 0 - 25 Years old
- Other/Unknown
- Type 2 Streams
- DNR-Managed Land
- 26 - 50 Years old
- Open Water
- Type 3 Streams
- DNR NAP's & NRCA's
- 51 - 75 Years old
- Wetlands (NWI)
- Type 4 Streams
- Q FLY BY NIGHT

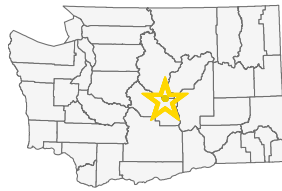
\*Sold Sales represent data from last 7 years only

Map created on: 12/6/2023



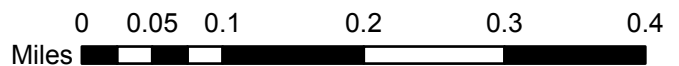
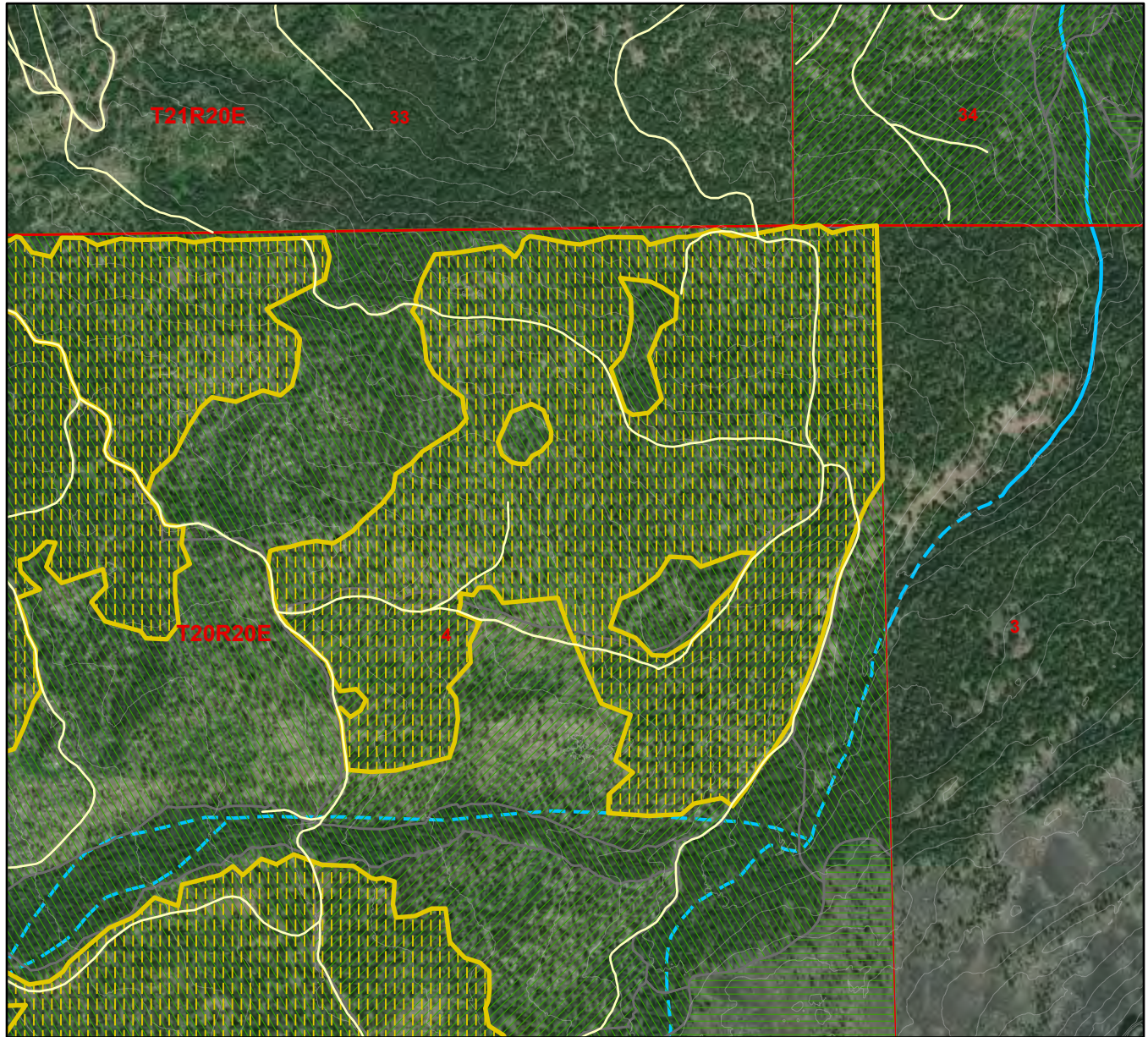
# Harvest Unit Adjacency Map

Sale Name: Q FLY BY NIGHT  
 Sale District: ALPINE  
 Sale Date: June, 2024  
 Sale (centered on) Activity ID: 339576  
 Sale Location: T20R20E 4, 6, T21R20E 32



23	24	19	20	21	22	23	24
26	25	30	29	28	27	26	25
35	36	31	32	33	34	35	36
2	1	6	5	4	3	2	1
11	12	7	8	9	10	11	12
14	13	18	17	16	15	14	13

This color map is produced by the Washington Department of Natural Resources (DNR), for discussion purposes only. If the copy you have is black and white, some of the information may not read correctly. Wetland locations are from the National Wetland Inventory (NWI) database. They are incomplete and may need field verification. The source data for this map is stored on the DNR's Geographic Information System. Although the DNR makes every reasonable effort to keep such data current, it cannot and does not accept liability for any errors or omissions. No warranty accompanies this material. Refer to the SEPA Checklist for additional detail.



- Sold Sales
- 76+ Years old
- Type 1 Streams
- 303D Listed Water
- 0 - 25 Years old
- Other/Unknown
- Type 2 Streams
- DNR-Managed Land
- 26 - 50 Years old
- Open Water
- Type 3 Streams
- DNR NAP's & NRCA's
- 51 - 75 Years old
- Wetlands (NWI)
- Type 4 Streams
- Q FLY BY NIGHT

\*Sold Sales represent data from last 7 years only

Map created on: 12/6/2023



# Harvest Unit Adjacency Map

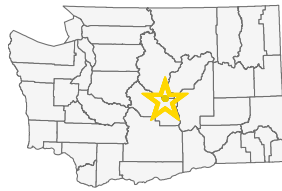
Sale Name: Q FLY BY NIGHT

Sale District: ALPINE

Sale Date: June, 2024

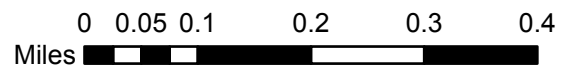
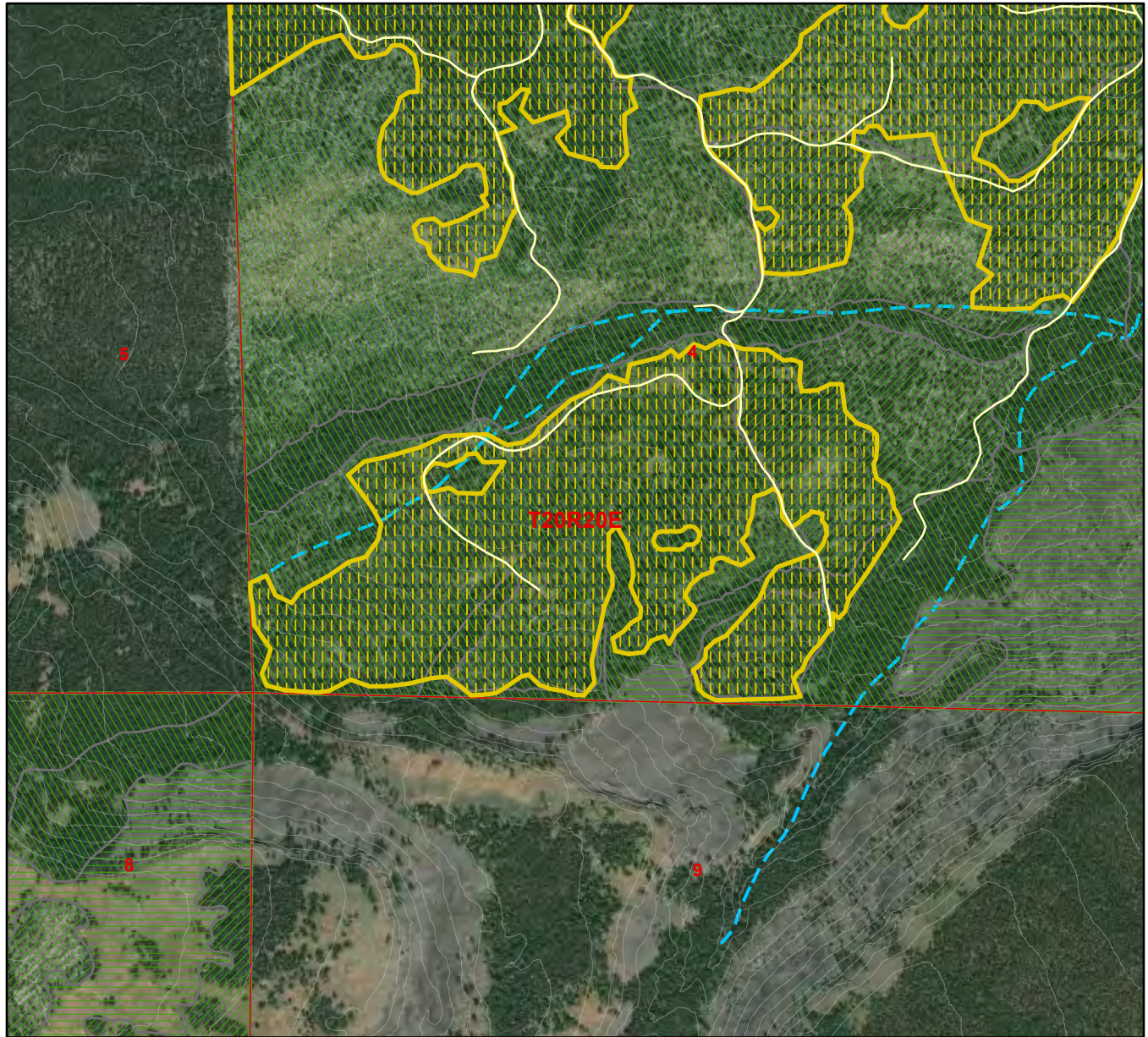
Sale (centered on) Activity ID: 339577

Sale Location: T20R20E 4, 6, T21R20E 32



23	24	19	20	21	22	23	24
26	25	30	29	28	27	26	25
35	36	31	32	33	34	35	36
2	1	6	5	4	3	2	1
11	12	7	8	9	10	11	12
14	13	18	17	16	15	14	13

This color map is produced by the Washington Department of Natural Resources (DNR), for discussion purposes only. If the copy you have is black and white, some of the information may not read correctly. Wetland locations are from the National Wetland Inventory (NWI) database. They are incomplete and may need field verification. The source data for this map is stored on the DNR's Geographic Information System. Although the DNR makes every reasonable effort to keep such data current, it cannot and does not accept liability for any errors or omissions. No warranty accompanies this material. Refer to the SEPA Checklist for additional detail.



- Sold Sales
- 76+ Years old
- Type 1 Streams
- 303D Listed Water
- 0 - 25 Years old
- Other/Unknown
- Type 2 Streams
- DNR-Managed Land
- 26 - 50 Years old
- Open Water
- Type 3 Streams
- DNR NAP's & NRCA's
- 51 - 75 Years old
- Wetlands (NWI)
- Type 4 Streams
- Q FLY BY NIGHT

\*Sold Sales represent data from last 7 years only

Map created on: 12/6/2023