

Harvest Unit Adjacency Map

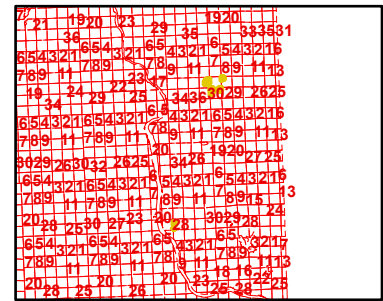
Sale Name: Q WANLESS CREEK

Sale District: ARCADIA

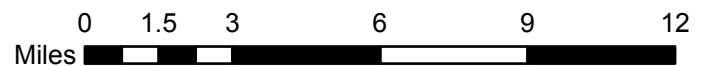
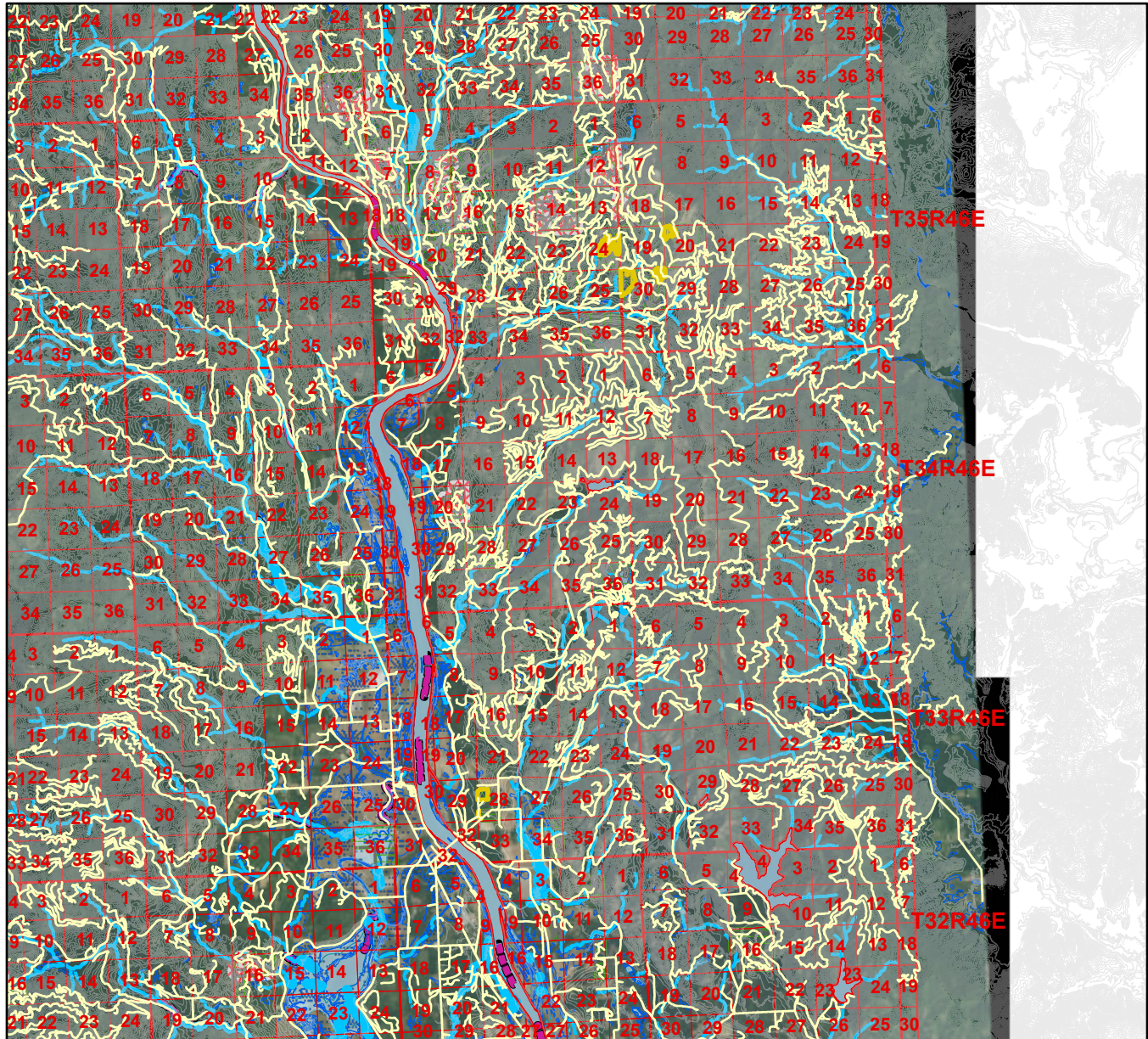
Sale Date: September, 2024

Sale Unit(s): All (8) Units

Sale Location: T33R44E 28, T35R44E 24, T35R45E 20, 30



This color map is produced by the Washington Department of Natural Resources (DNR), for discussion purposes only. If the copy you have is black and white, some of the information may not read correctly. Wetland locations are from the National Wetland Inventory (NWI) database. They are incomplete and may need field verification. The source data for this map is stored on the DNR's Geographic Information System. Although the DNR makes every reasonable effort to keep such data current, it cannot and does not accept liability for any errors or omissions. No warranty accompanies this material. Refer to the SEPA Checklist for additional detail.



- | | | | |
|-------------------|----------------|----------------|--------------------|
| Sold Sales | 76+ Years old | Type 1 Streams | 303D Listed Water |
| 0 - 25 Years old | Other/Unknown | Type 2 Streams | DNR-Managed Land |
| 26 - 50 Years old | Open Water | Type 3 Streams | DNR NAP's & NRCA's |
| 51 - 75 Years old | Wetlands (NWI) | Type 4 Streams | Q WANLESS CREEK |

*Sold Sales represent data from last 7 years only

Map created on: 2/15/2024