



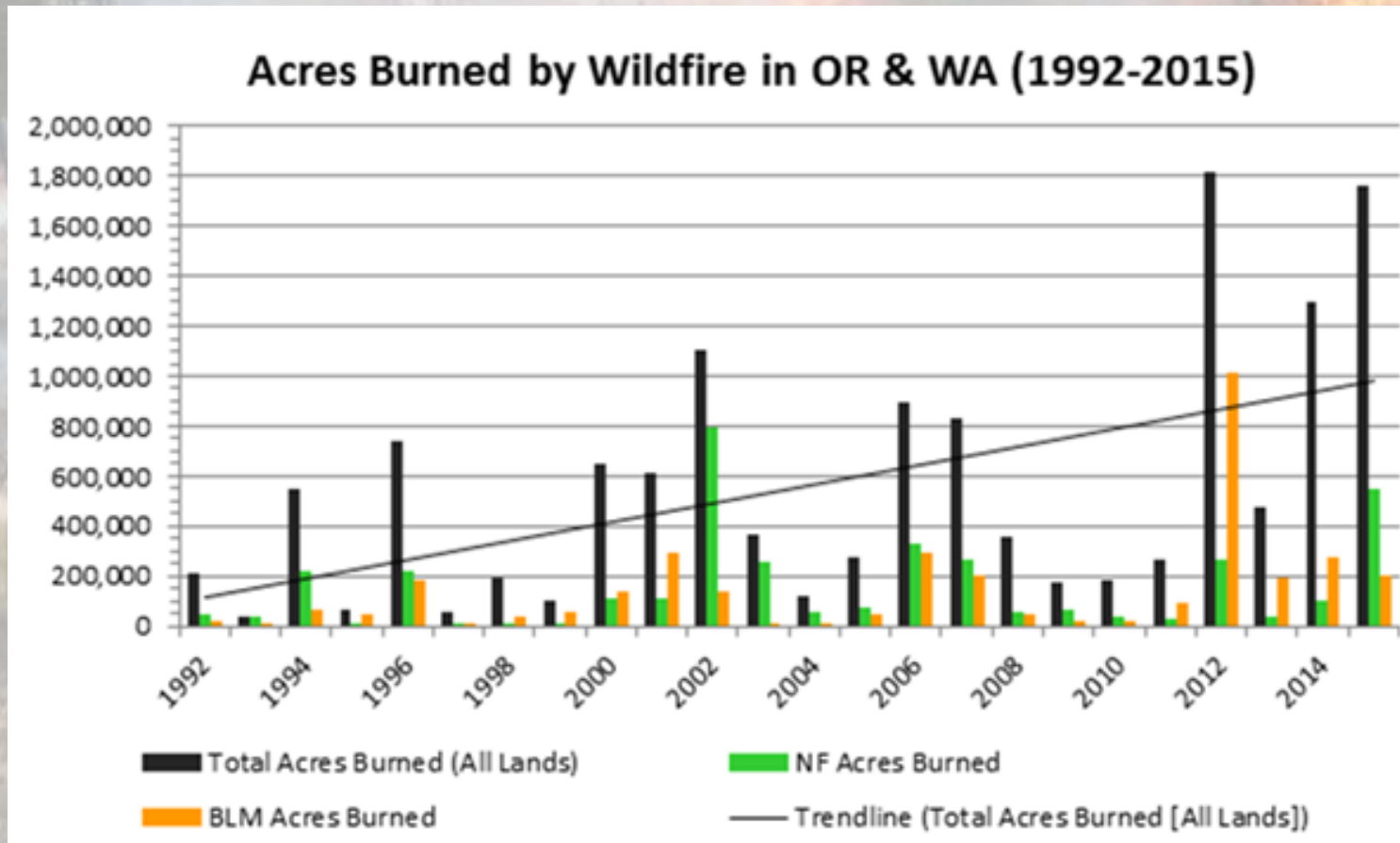
Wildfire Trends in Washington

Richy J. Harrod



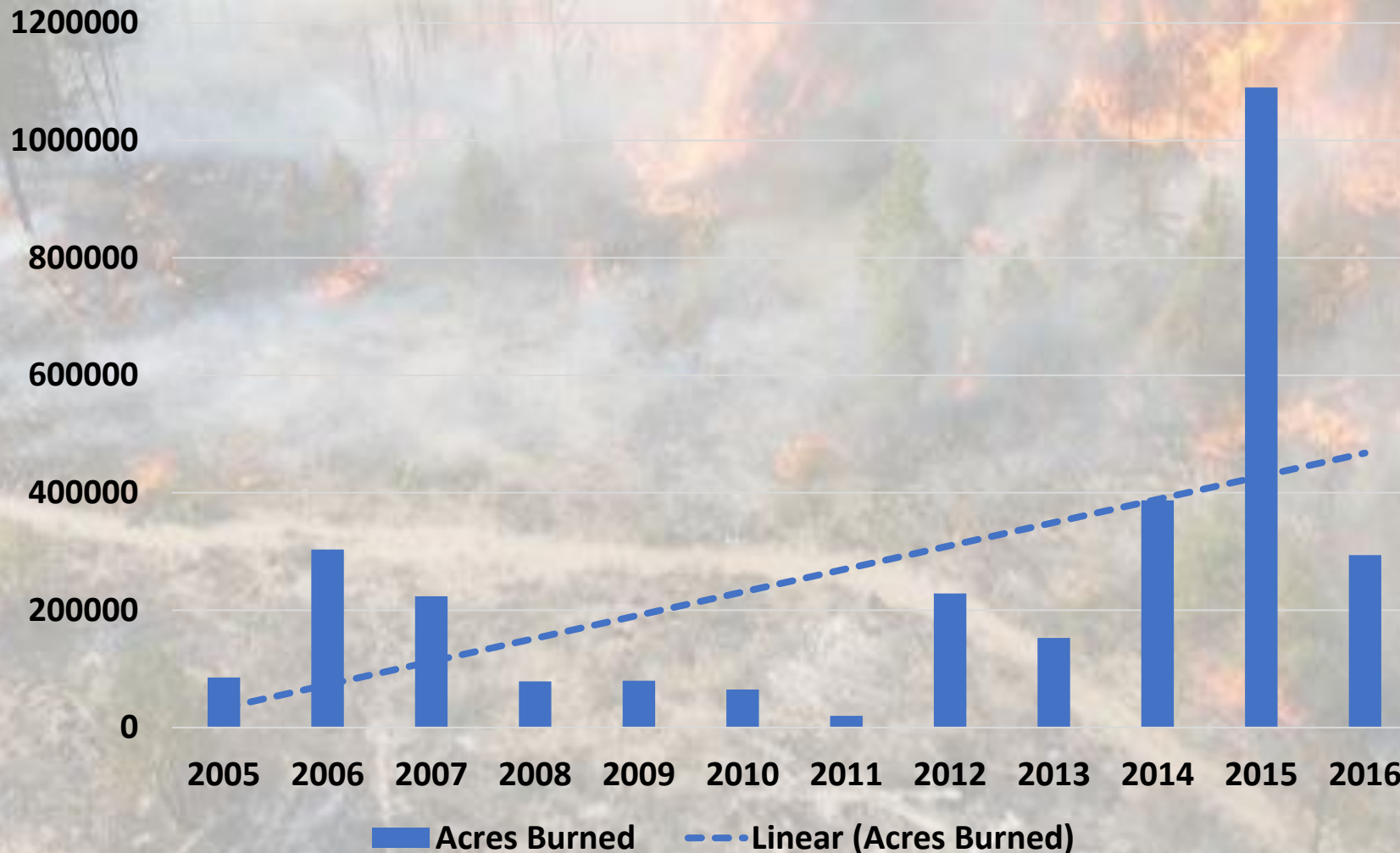
Trends in Acres Burned

PNW



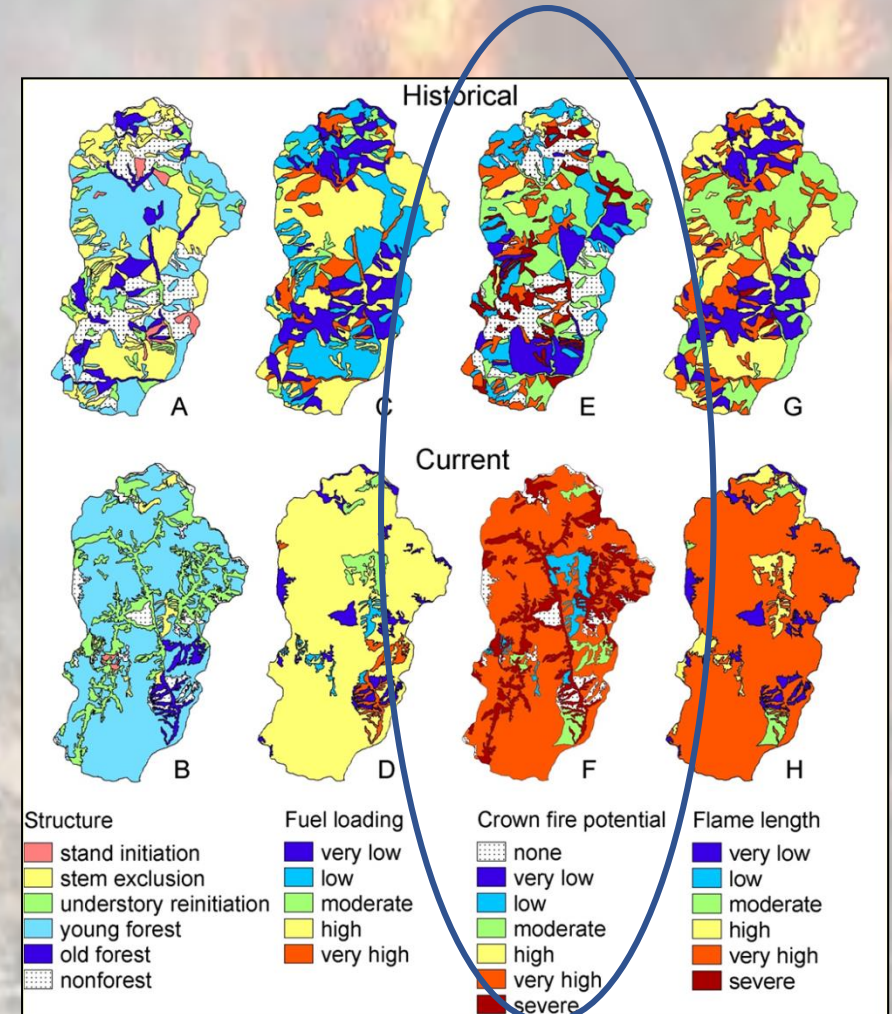
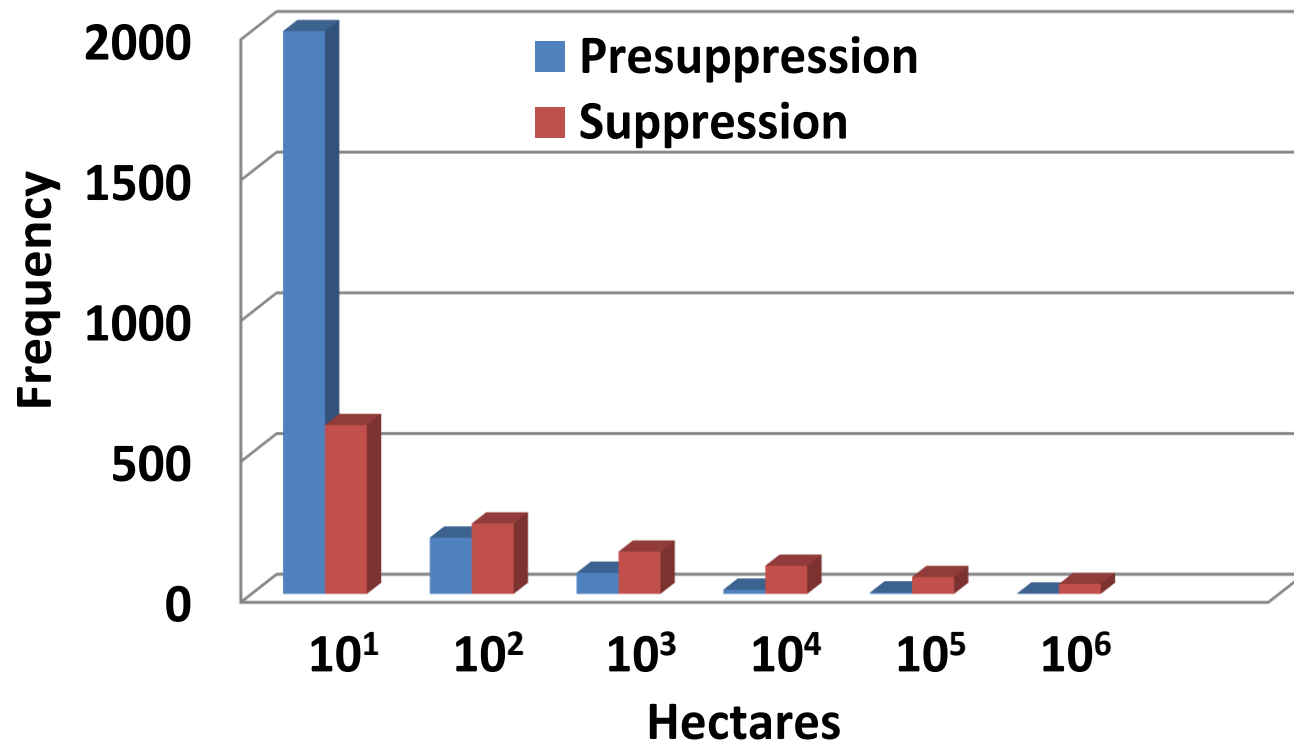
Washington Large Fires

Acres Burned



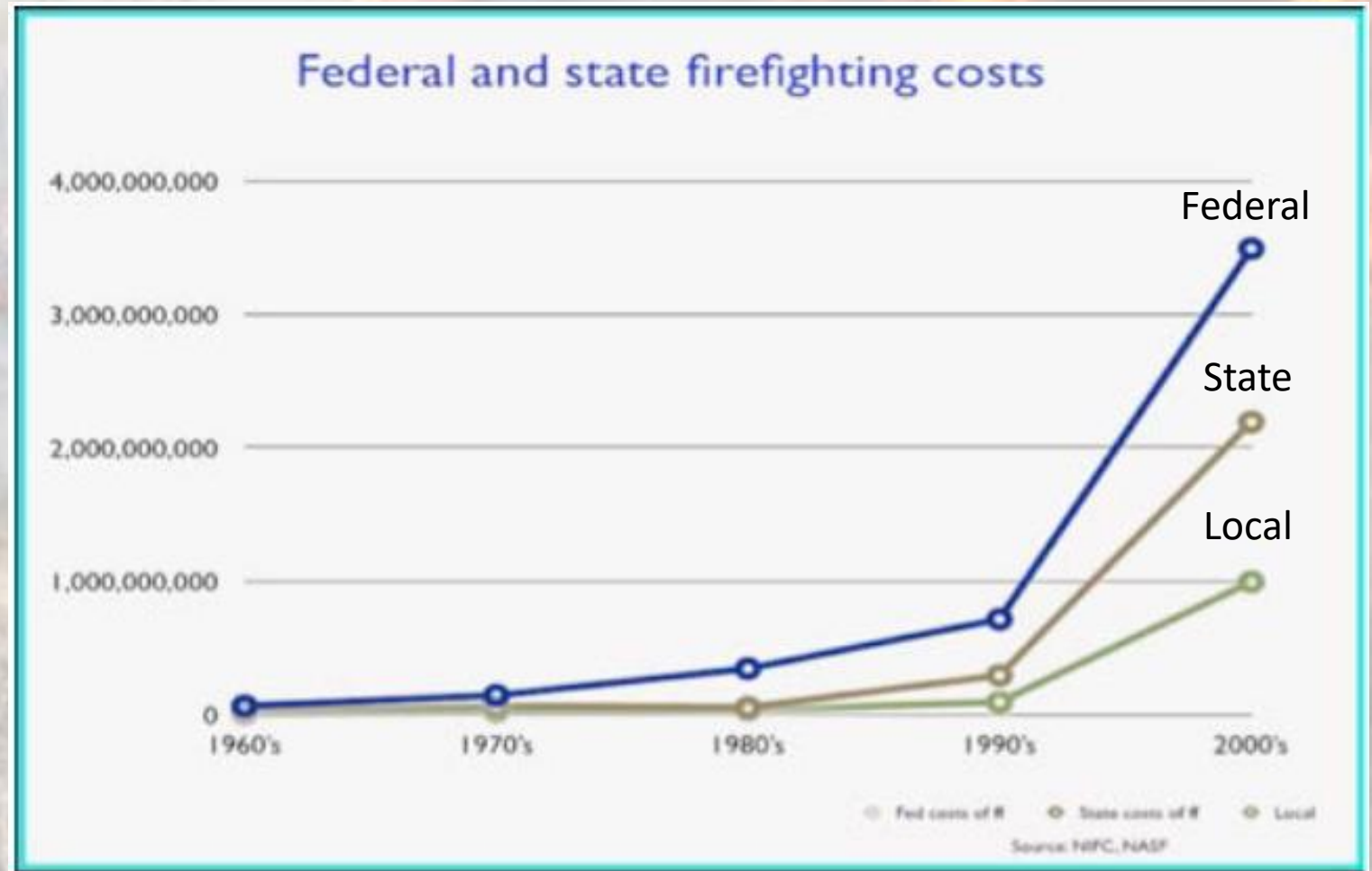
Changes in Fire Patterns

Change in fire sizes

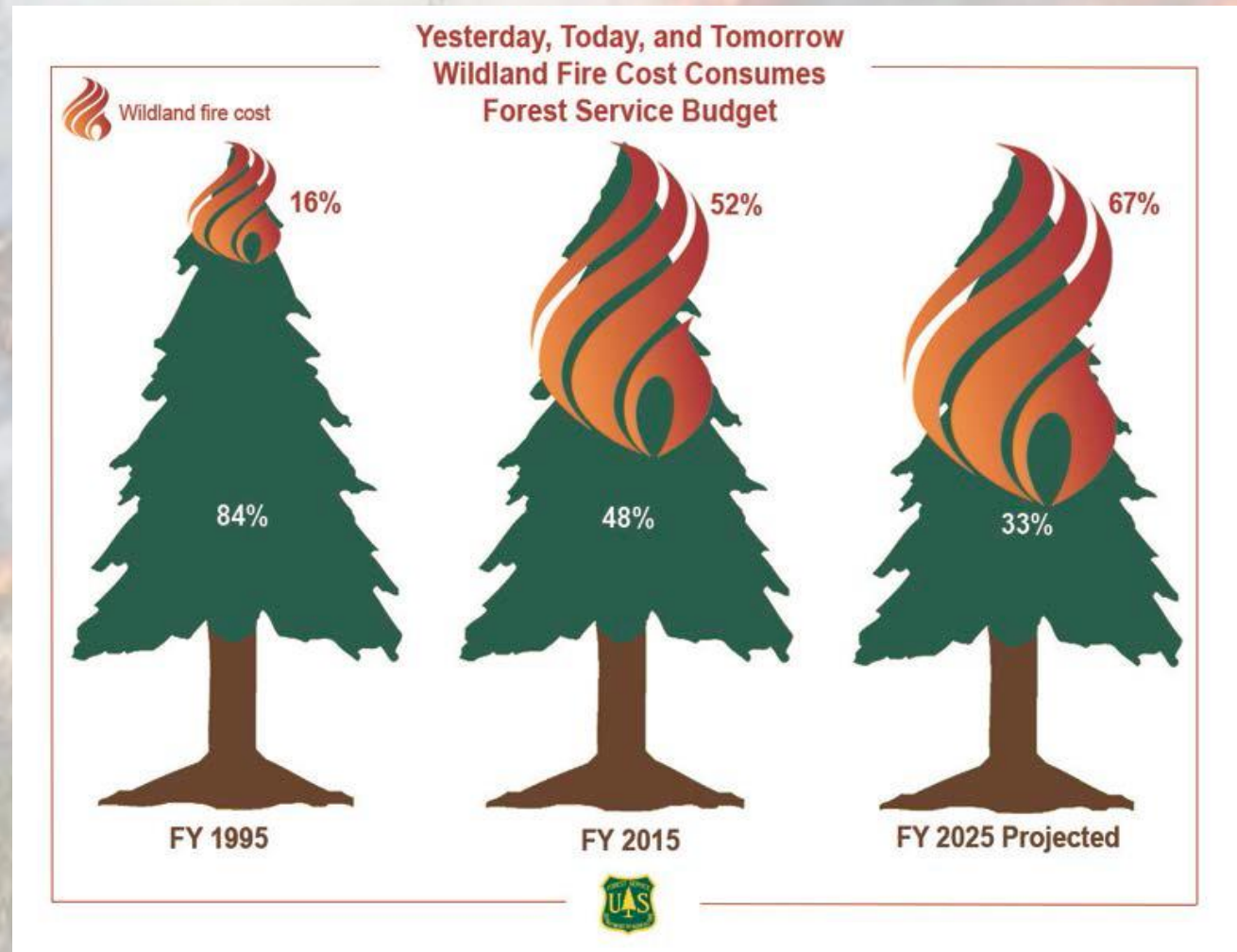


Wildfire Costs Nationally

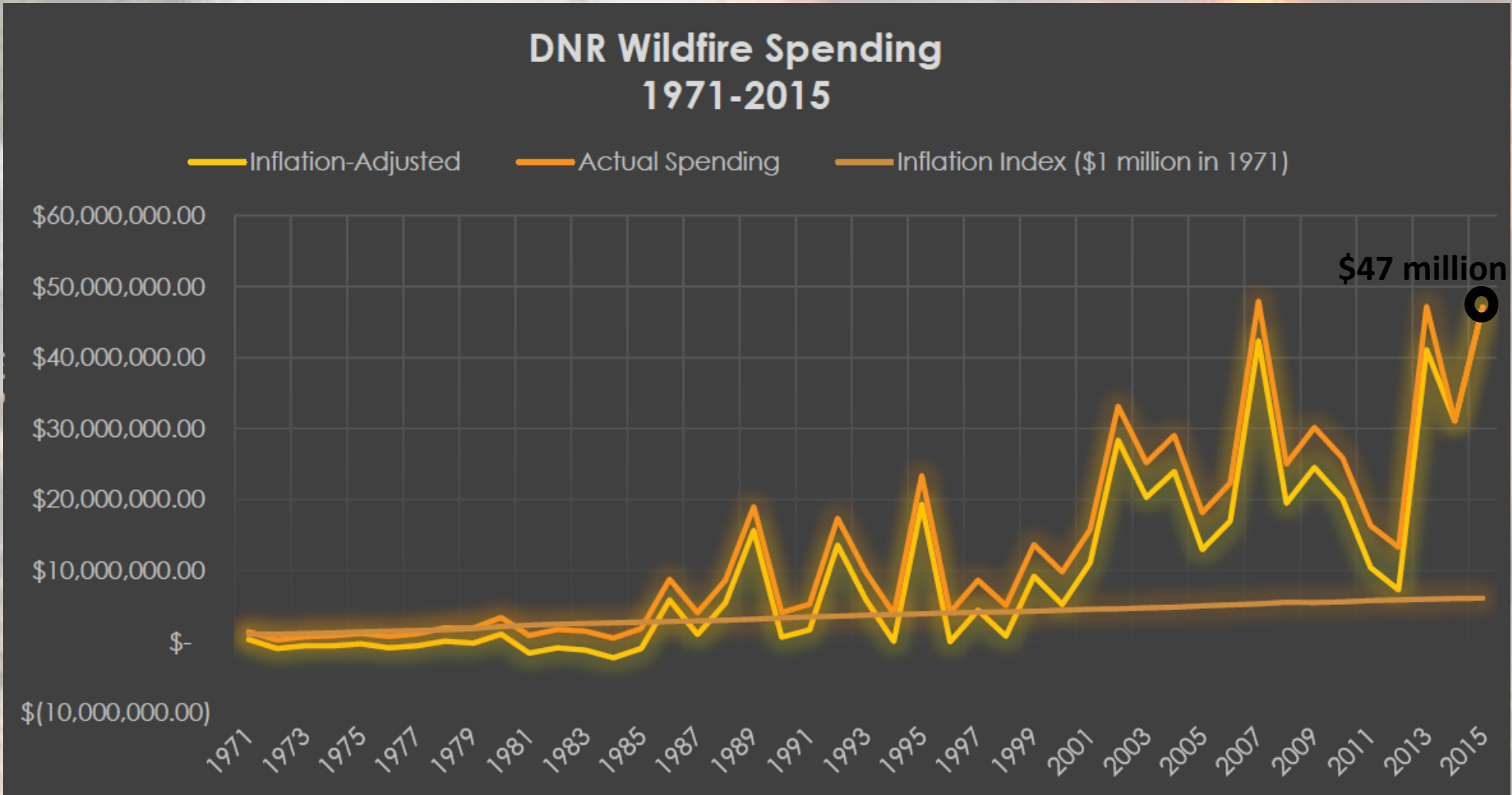
- Federal wildfire costs averaged \$0.92 billion from 1991-1999.
- From 2000-2012, federal costs average \$3.13 billion.
- All agencies \$6.8 billion by 2012



Wildfire Costs Nationally



Wildfire Costs for DNR



True and Total Costs

How much more does a fire cost?

The true and total cost of wildfires includes long-term community and economic impacts. But reported costs are far less than the true costs, as the numbers on these four fires demonstrate.

Total Cost =
the True Cost
of Wildfires

Cerro Grande
(NM,
2000)

\$ 910 million
34 times
more for Total
Costs
than for
immediate
suppression
& recovery
costs

\$ 2.7 million

Rodeo-
Chediski
(AZ,
2002)

\$320 million
6 times more
for Total
Costs

\$ 4.6 million

Old,
Grand
Prix,
Padua
(CA,
2003)

\$ 5 million

Rim
Fire
(CA,
2013)

\$ 1.8 billion
13 times more
for Total Costs
than for
immediate
suppression
& recovery
costs

\$ 127 million

\$ 1.8 Billion

\$ 0.9 Billion

\$ 0.0 Billion

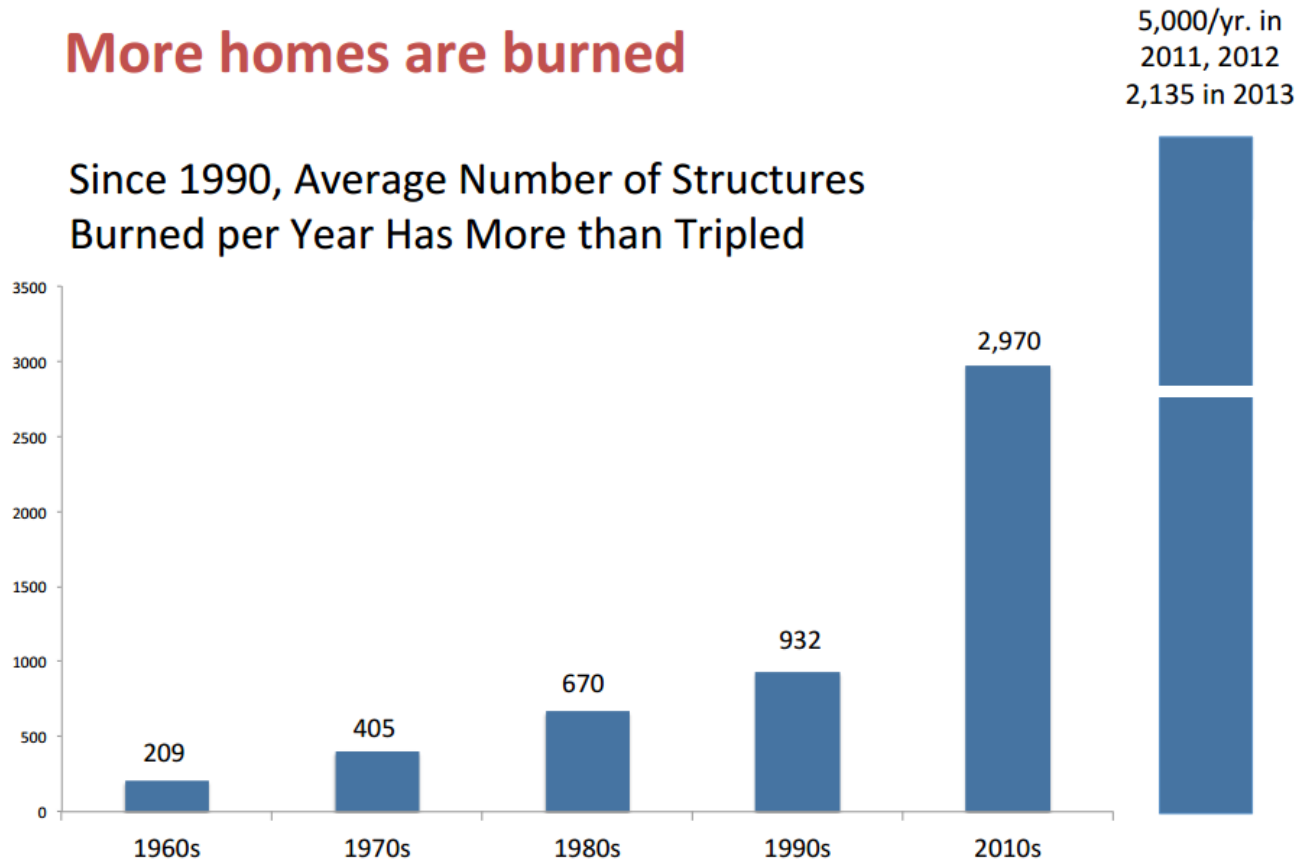
Immediate Suppression & Recovery Costs

Structures Lost

Washington

More homes are burned

Since 1990, Average Number of Structures Burned per Year Has More than Tripled



- 2014 and 2015 were particularly devastating years with nearly 800 structures lost total.

2015 Wildfire Season

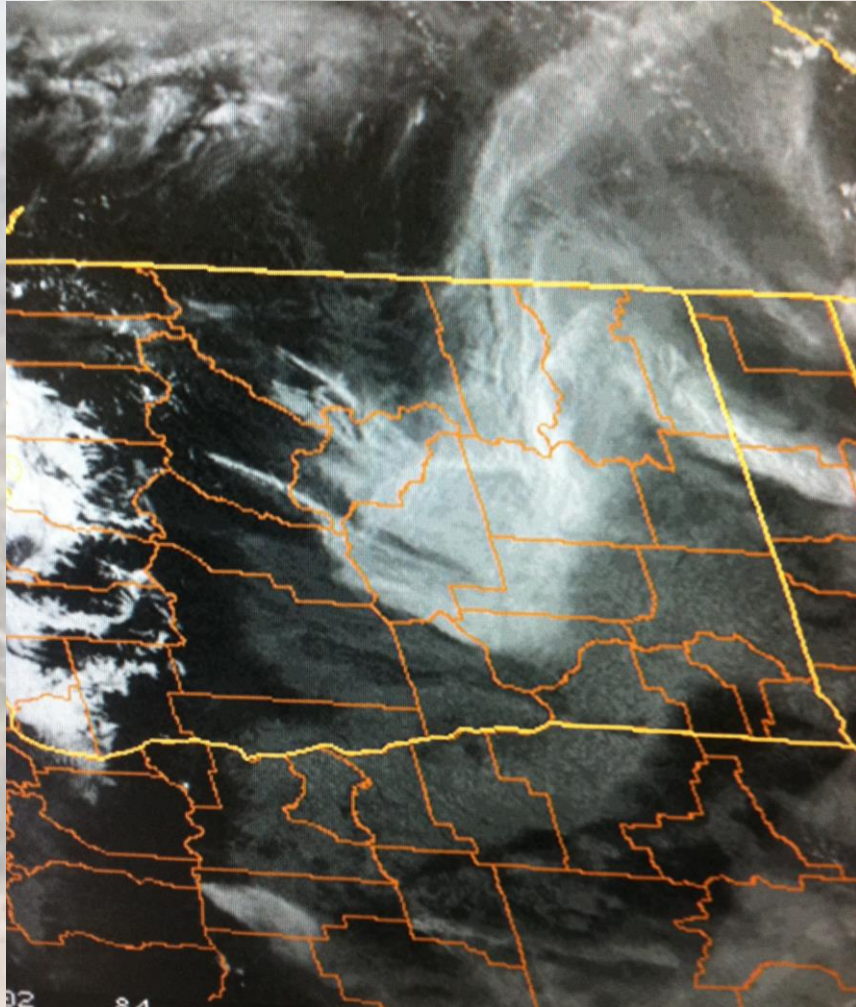
Table 1. 2015 Northwest Wildfire Statistics

Metric	Oregon	Washington
Number of Fires in 2015	2273	1541
Number of Fires: 10-Yr Average (2005-2014)	2592	1355
Number of Large Fires*	43	59
Acres affected by wildfires	685,809	1,089,966
Acres Burned: 10-Yr Average (2005-2014)	442,963	152,281
Largest Fires by State	Canyon Creek Complex (110,422 acres)	North Star (218,138 acres)
Homes and Structures Lost	135	499
Fatalities	Total Cost: Over \$609 million!	
		3

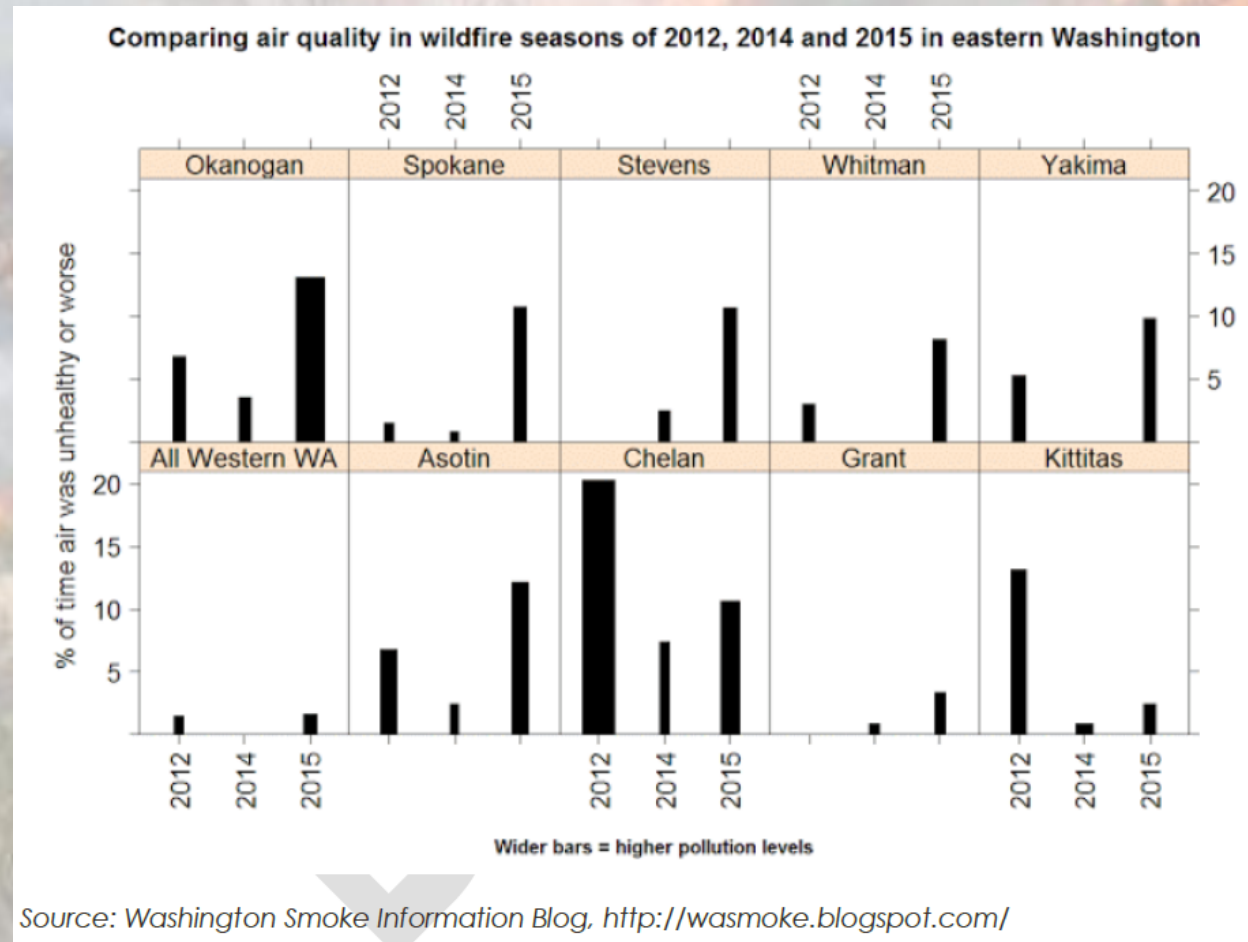
*A large fire is at least 100 acres in timber or 300 acres in grass or brush.



Air Quality



Air Quality



Source: Washington Smoke Information Blog, <http://wasmoke.blogspot.com/>

Suppression Success Rate

- **97% of all fires are contained in controlled during initial attack, even with longer fire seasons.**
- **3% of fires become large and account for the vast majority of cost and loss of values.**
- **Our wildfire problem in Washington is not necessarily about our response but more about preparing for fire before it occurs.**



A New Paradigm

- **The trends in wildfires suggest we need to improve how we manage wildfires.**
- **The challenge before us is to consider a unified course correction on our wildfire strategies in Washington.**



**WASHINGTON WILDLAND FIRE
PROTECTION STRATEGIC PLAN**