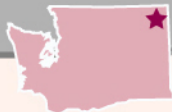


Little Pend Oreille and Vicinity Trail System



Public Land

- Dept of Natural Resources Trust Land
- Washington State Dept of Fish and Wildlife
- Washington State Parks
- US Forest Service
- US Fish and Wildlife Service

Road and Trail System

- State Highway
- Primary County Road
- Primary Forest Road
- Secondary Forest Rd
- Trail: Hiking or Skiing
- Trail: Hiking, Horse
- Trail: Hiking, Horse, Mtn Bike Motorcycle

Recreation Sites

- Campground
- Picnic Site
- Trailhead Parking
- Point of Interest

Currently, there are no ATV trails in this system.

Contour Interval = 100 Feet.



0 0.5 1
Miles
Scale: 1 inch on the map represents 1 mile on the ground



On DNR Land

- Fires are only allowed in designated fire pits.
- Pack out garbage and litter.
- Do not alter or remove vegetation.
- Do not ride in streams, muddy areas, wetlands, or on road embankments.

On DNR Trails

- Stay on signed, DNR-managed trails.
- Unsigned trails are closed.
- Respect the rights of others.
- Watch for unmarked hazards on trails; report hazards.

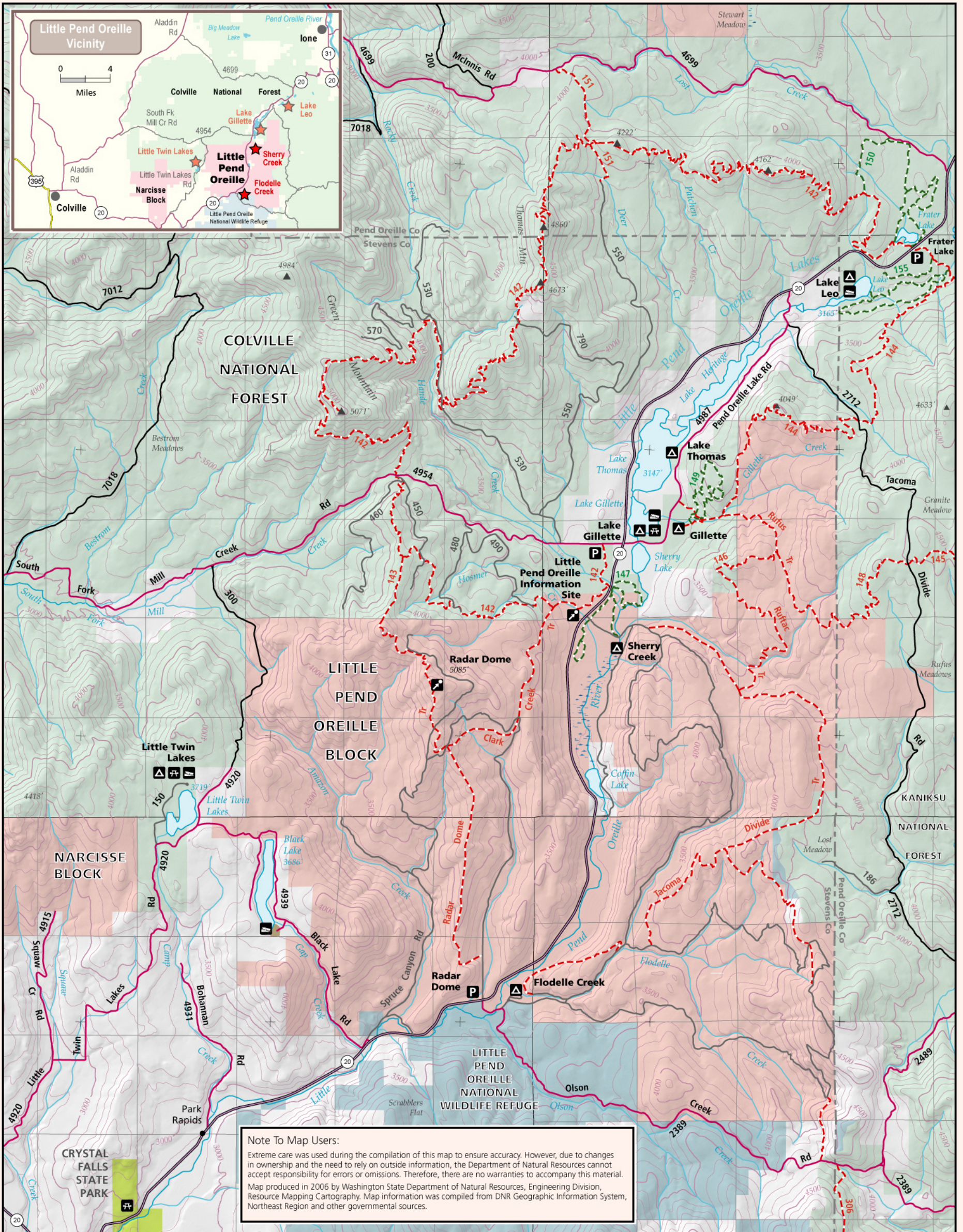
On DNR Roads

- Only licensed drivers, street-legal, or valid ORV tagged vehicles are allowed.
- Riders under the age of 13 years old must be under direct supervision of a person who has a valid drivers license and is at least 18 years of age.
- Helmet required for quads and motorcycles.
- Speed limit is 25 miles per hour.
- Be ready to yield right of way to heavy equipment and logging trucks.

In DNR Campgrounds and At DNR Trailheads

- Camp in designated campsites only.
- No camping in day use areas.
- Maintain quiet between 10 p.m. and 6 a.m.
- Limit your stay to the posted number of days.
- Do not shoot in or near recreation sites, trails or roads.
- No garbage service is provided. Pack out garbage and litter.
- Speed limit is 5 miles per hour.

To report hazards, or for questions call the DNR Northeast Region office at (509) 684-7474.



Note To Map Users:
 Extreme care was used during the compilation of this map to ensure accuracy. However, due to changes in ownership and the need to rely on outside information, the Department of Natural Resources cannot accept responsibility for errors or omissions. Therefore, there are no warranties to accompany this material. Map produced in 2006 by Washington State Department of Natural Resources, Engineering Division, Resource Mapping Cartography. Map information was compiled from DNR Geographic Information System, Northeast Region and other governmental sources.