



Board of Natural Resources

Product Sales & Leasing Division

Product Sales Program

November 7, 2017



Agenda

- October 2017 Results
- Proposed Sales for December 2017
(Action Item)



October 2017 Results

SALES OFFERED

- 13 sales
- 61.1 mmbf
- \$20.7 million
- \$338/mbf

SALES SOLD

- 13 Sales
- 61.1 mmbf
- \$29.7 million
- \$486/mbf
- Average # of Bids=3.2



Current Proposal

Total Proposal

- 18 sales
- 67.3 mmbf
- \$24.3 million
- \$362/mbf



Blue Ridge 2018

Part of an ongoing cooperative study between:

- WA DNR
- USFS Pacific Northwest Research Station
- University of Idaho
- University of Washington

Comparing the visual impacts of timber harvest using different silvicultural systems while maintaining typical timber and revenue production

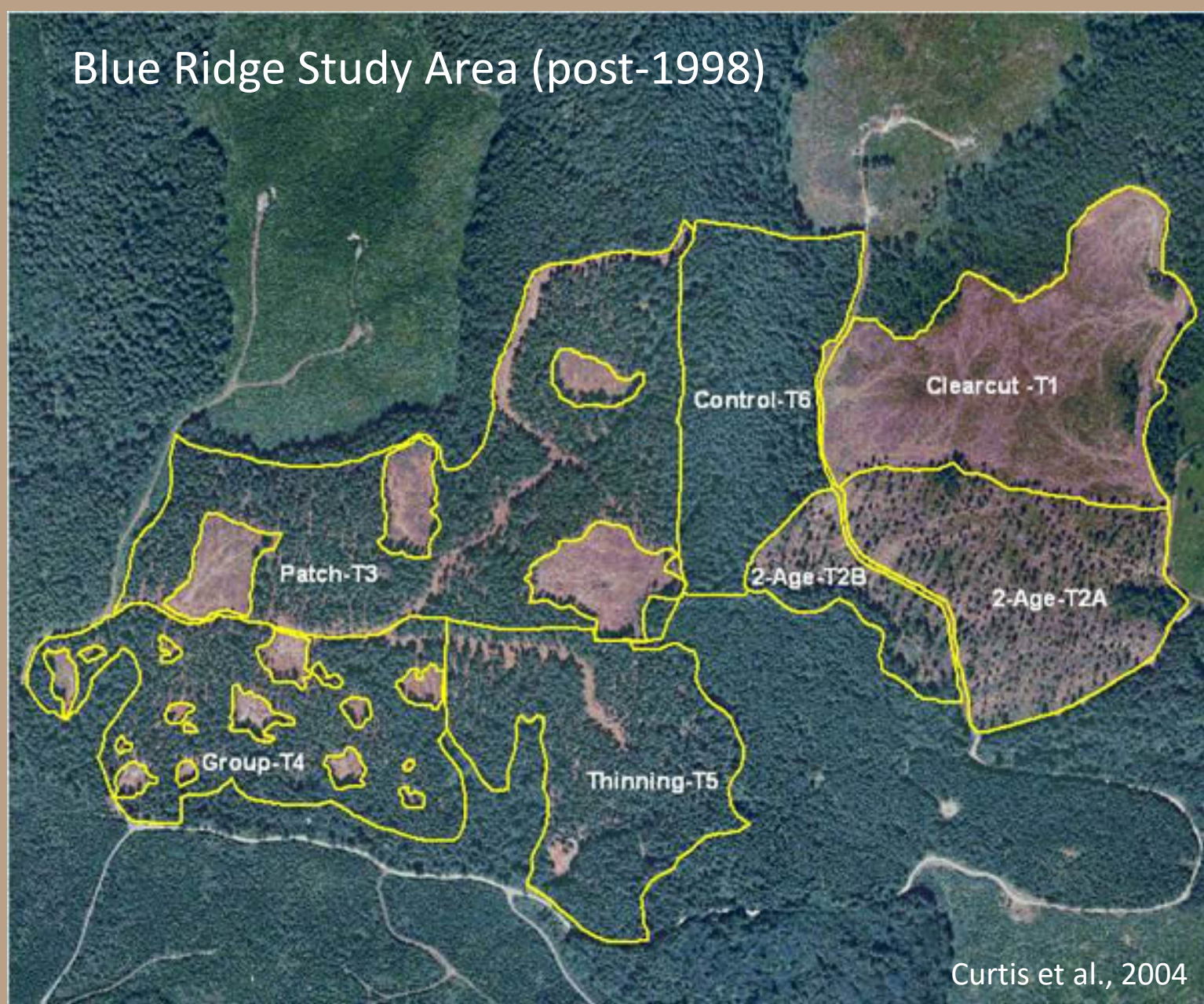
Each replication consists of six treatments:

1. Clearcut – one-time entry
2. Two-aged stand – one-time entry
3. Patch cuts – new patches every 10 years
4. Group selection cuts – new groups every 10 years
5. Thinning – repeated every 20 years
6. Control – untreated

Three replications in Capitol State Forest:

- Blue Ridge (1998, 2008)
- Copper Ridge (2002, 2012)
- Rusty Ridge (2004, 2014)

Blue Ridge Study Area (post-1998)



Curtis et al., 2004



Current Proposal



Recommend all sales be approved for auction



