

Eastside Sustainable Harvest Calculation Topics – Revising the 1999 Northern Spotted Owl Procedure for Eastern WA

A Presentation to the Board of Natural Resources

Duane Emmons

December 5, 2023

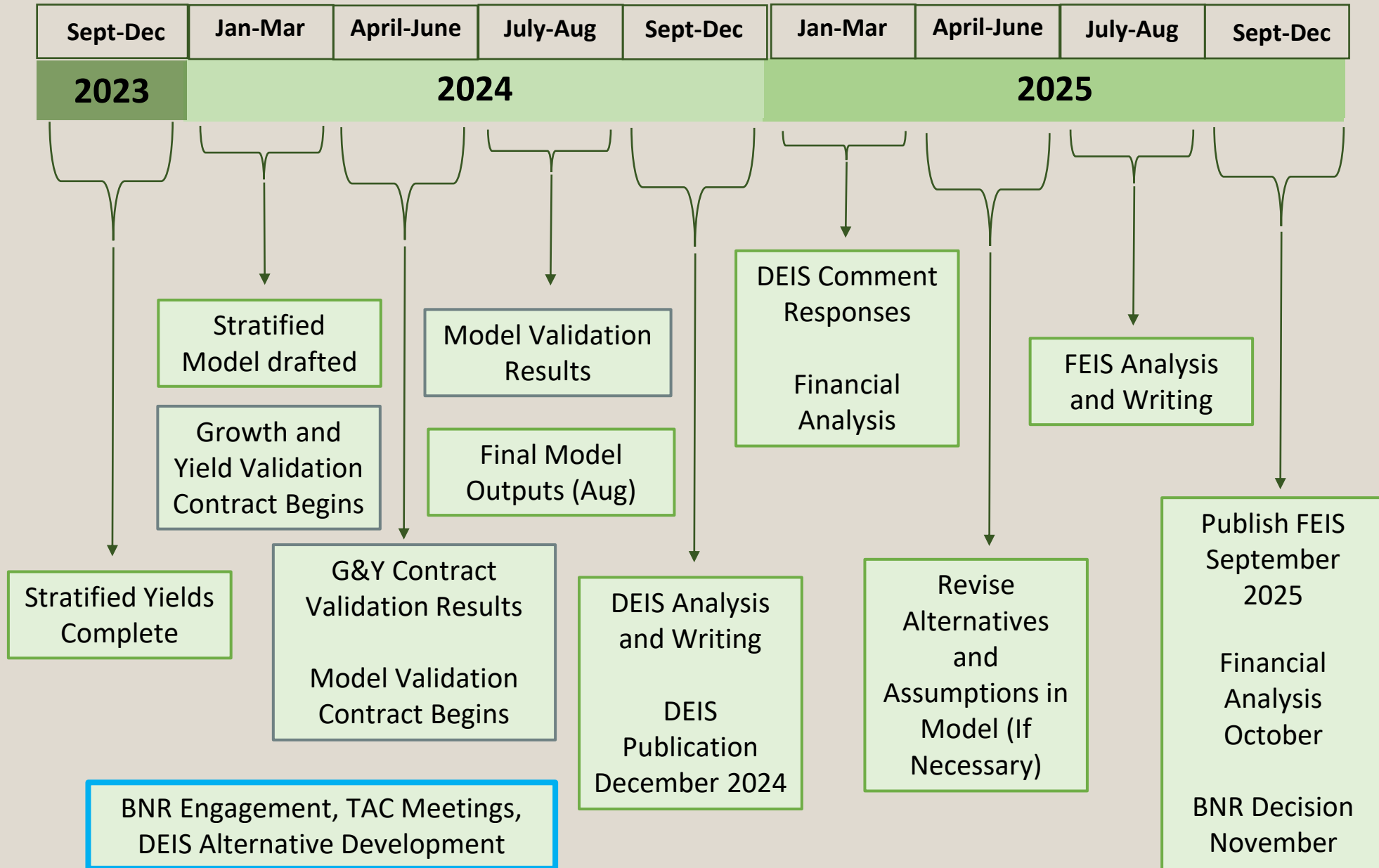


Agenda

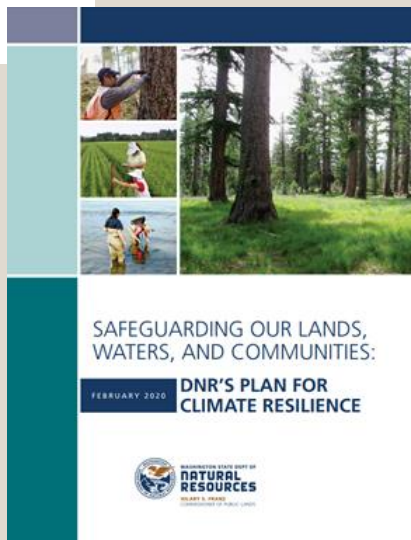
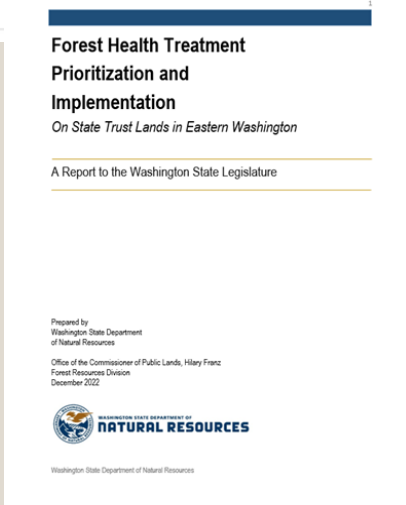
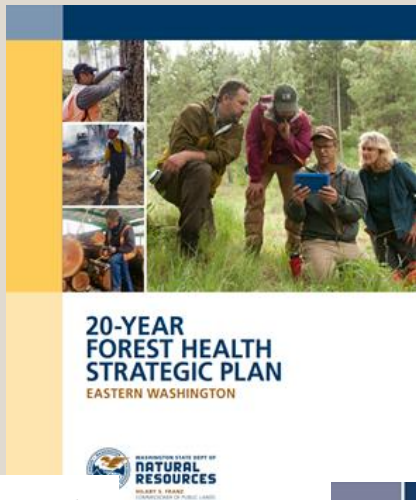
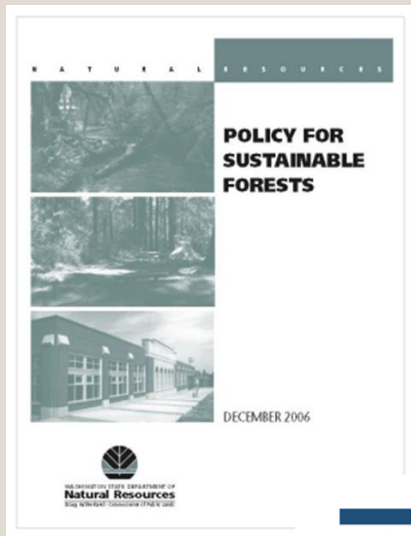
- Review of current work for the eastside Sustainable Harvest Calculation
- Why we are considering revising the 1999 northern spotted owl procedure
- Next steps



Eastern WA Draft SHC Timeline – High Level Milestones



Why now?

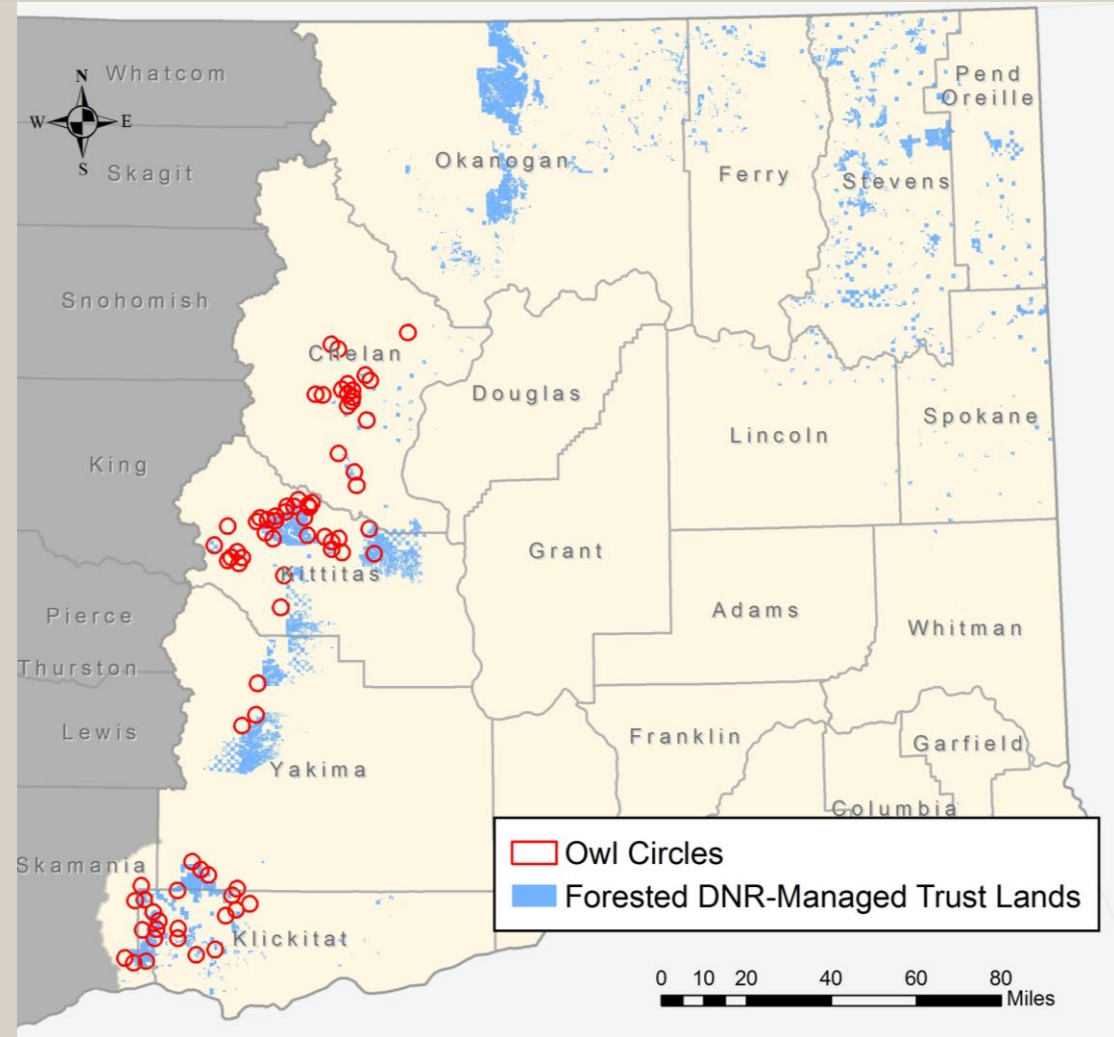


- Last eastside Sustainable Harvest Calculation completed in 1996
- Many new policies and plans since 1996



Owl Circles

- Fixed radius “circles” around nest sites
- Less effective than landscape-level approaches



Habitat Conservation Plan

- State Trust Land's HCP Implementation began in 1997
- Strategic protection based on a landscape-level approach
- Provides pathway to address forest health issues



HCP Amendment One



- Provided new strategies to promote forest resilience and reduce the risk of catastrophic loss in conjunction with owl habitat protection in the eastside Klickitat HCP Unit
- Site specific ecological management
- Acknowledgement that not all eastside sites *can* or *should* be managed for the forest structure and stand density required for owl habitat

1999 Procedure

PROCEDURE

Department of Natural Resources

Date: August, 1999

Page: 1 of 7

Cancels: Habitat Conservation Plan Implementation Memorandum #1 (1/20/98)

PR 14-004-120

**MANAGEMENT ACTIVITIES WITHIN SPOTTED OWL NEST
PATCHES, CIRCLES, DESIGNATED NESTING, ROOSTING,
AND FORAGING AND DISPERSAL MANAGEMENT AREAS**

APPLICATION

All forested ecosystems covered by the Habitat Conservation Plan, including the Olympic Experimental State Forest Planning Unit

DISCUSSION

This procedure provides direction for managing spotted owl habitat to ensure that adequate habitat is provided for spotted owls and other wildlife species that require an older-forest ecosystem for all or part of their life-cycle functions. The goal of the spotted owl conservation

- Protects owl circles – a relic of pre-HCP management
- Westside application cancelled as part of the 2004 SHC process, replaced with new westside procedure



Why Revise the Procedure?

- Conflicts with the ecological considerations of the HCP and HCP Amendment One
- Limited flexibility in managing for forest health
- Risk of catastrophic loss



Unhealthy, overly dense owl habitat



Owl habitat burned in the 2017 Jolly Mountain fire

Next Steps

- Assess the impacts of the current owl procedure and of potential revisions to the procedure as a part of the EIS process for the eastside Sustainable Harvest Calculation
- These assessments will examine how different alternatives might impact a variety of metrics, including the Department's ability to attain forest health goals
- The Department plans to reinitiate scoping for the EIS process of the eastside Sustainable Harvest Calculation this month

Questions?



