



Board of Natural Resources

June 7, 2022



Engineering Division Land Surveys

Patrick Beehler, PLS, CFedS
ADM Surveys & Maps Programs



Who We Are

Land Survey Field Crews

- **Tumwater (Division)**
- **Chehalis (Division)**
- **Port Angeles (Olympic)**
- **Sedro Woolley (NW)**
- **Colville (NE)**

Office Staff (NRB)

- **Admin., Drafting, Legal Desc., GIS**



Tumwater Survey Crew



What We Do

- **Accurate Boundary Determination**
- **Prepare Legal Descriptions.**
- **Set Permanent Survey Markers**
- **Post State Land Boundaries**
- **Prepare Final Maps**
- **Record Maps at the County**
- **Update DNR's GIS Cadastre Layer**



Why We Do It

Good Management Requires Accurate Data

- **Land Survey Support for Management of State Lands**
- **Accurate Determination of Location and Boundary**
- **Protect Trust Resources From Encroachment**



Typical Survey Project

Timber Sale

- **Region Schedules Planned Harvest**
- **We Complete Land Survey Work More Than One Year Before TS Bid Date**
- **Project Includes: Research Records, Recon for Control and Traverse, Field Work, Set Monuments, Post Line, Draft Map, Record Map**
- **Update DNR's GIS**

Locating Quarter Corner Using GNSS



Crew Hiking to Job Site



Traverse Setup on Stump



Finding GLO Evidence



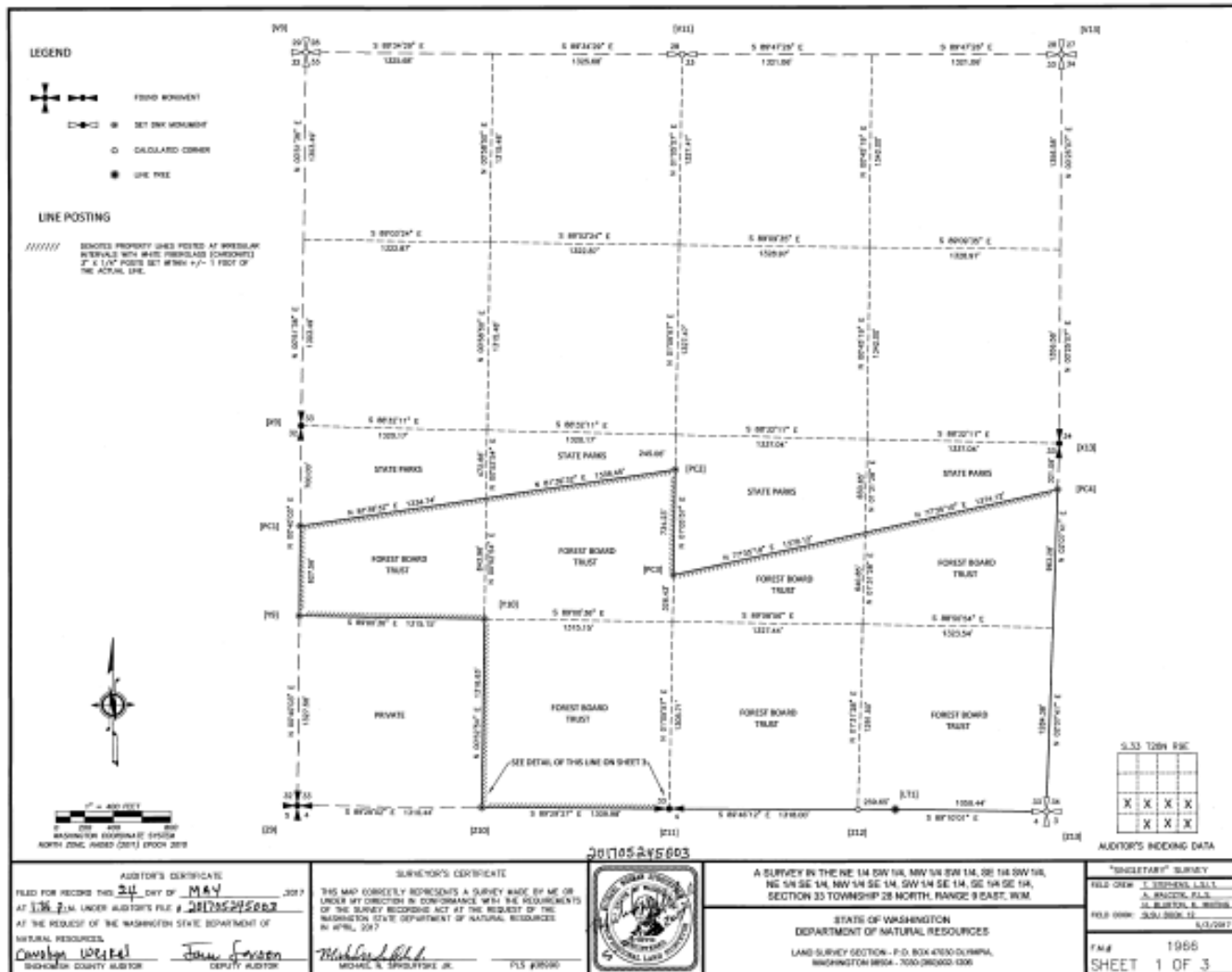
Setting Monument



Line Posting



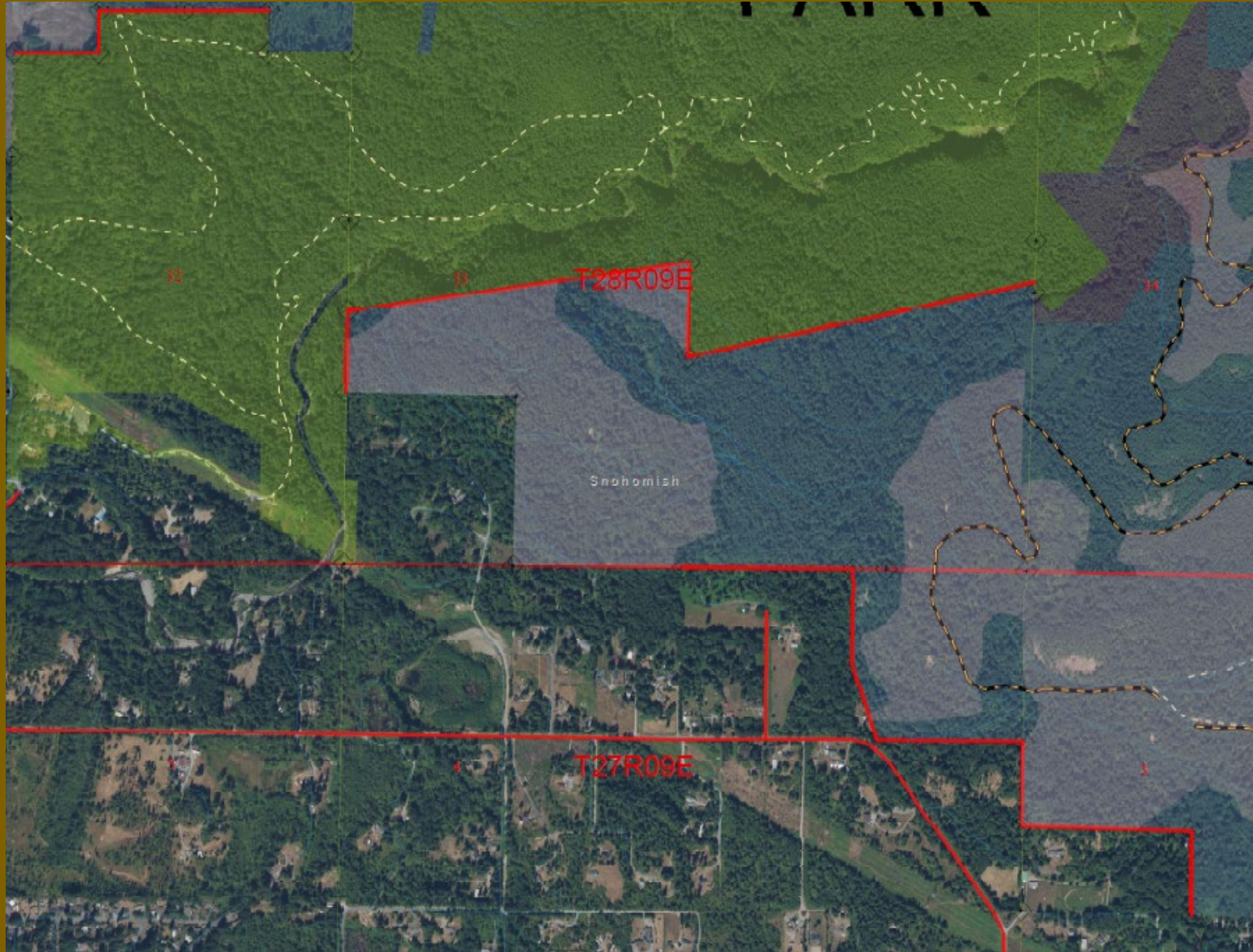
Final Map Showing Posting



Entering Survey Info Into GIS Cadastre



DNR GIS



Questions?

Pat.Beehler@dnr.wa.gov

